

# STATE OF MINNESOTA DEPARTMENT OF HIGHWAYS Plan and Profile of State Road No. 5

ANOKA COUNTY

From SO. 1/4 COR. OF SEC. 5 T.31N, R.23W. To SO. 1/4 COR. OF SEC. 6 T.31N, R.22W.  
Give proper reference to Sections, Township and Range

GROSS LENGTH-26,175.2 FEET 4.957 MILES  
LENGTH OF EXCEPTIONS- 0 FEET 0 MILES  
NET LENGTH 26,175.2 FEET 4.957 MILES

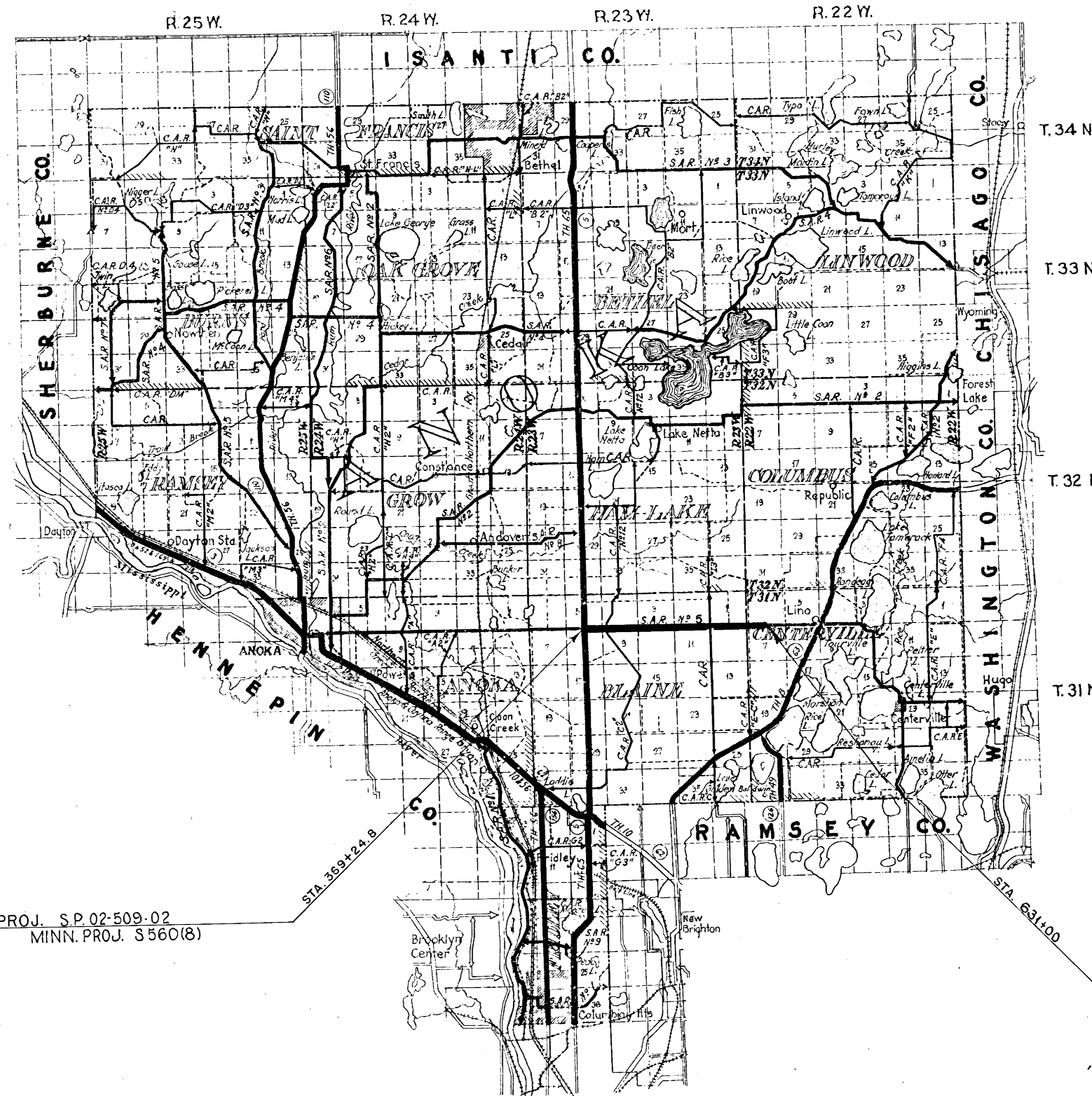
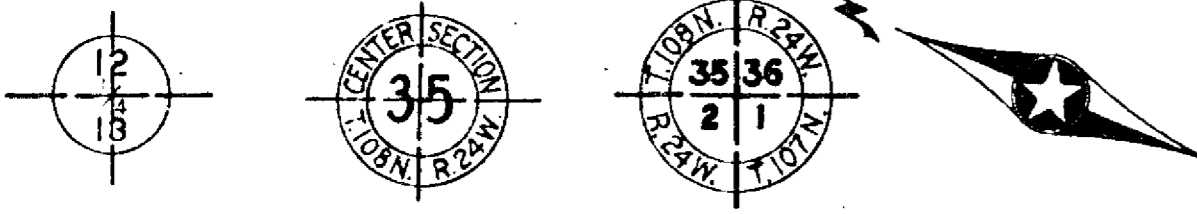
PLAN: 1 Inch = 230 Feet  
PROFILE: Horiz. 1 Inch = 200 Feet Vert. 1 Inch = 20 Feet  
SCALE: Horiz. 1 Inch = 100 Feet  
WORKING PLANS: Vert. 1 Inch = 10 Feet  
Cross-Section, 1 Inch = Feet

LAYOUT  
Scale, 1 Inch = 10560 Feet

INDEX OF SHEETS  
Sheet No. 1. Title Sheet and Layout Map  
No. 2. Typical Cross-Sections and Statement  
No. 3-5 Plan and Profile, Sta. 563+24.8 to Sta. 631+00.  
No. 6-19 CROSS SECTIONS

SPECIFICATIONS  
THE SPECIFICATIONS FOR HIGHWAY CONSTRUCTION DATED JULY 1, 1947,  
AND SUBMITTED FOR APPROVAL BY THE DIVISION ENGINEER OF THE  
PUBLIC ROADS ADMINISTRATION, OCTOBER 15, 1947, SHALL GOVERN.

CONVENTIONAL SIGNS	ABBREVIATIONS
STATE LINE	EXC.
COUNTY LINE	EARTH
TWP. OR RANGE LINE	LOOSE ROCK
SECTION LINE	SOLID ROCK
RIGHT OF WAY LINE	EMBANKMENT
CORPORATE OR CITY LIMITS	OVERHAUL
ROAD CENTER LINE	SURFACING
RETAINING WALL	HAND DITCHING
RAILROADS	SPECIAL EXCAVATION
CREEK	SPECIAL FLOWING
DRY RUN	GUARD RAIL
DRAINAGE DITCH	CORRUGATED METAL CULVERT
POWER POLE LINE	SECTIONAL CONCRETE CULVERT
TELEPHONE OR TELEGRAPH LINE	SECTIONAL CONCRETE CULVERT (Heavy Type)
CULVERTS - PLAIN	TON MILES
WITH ENDWALLS	TELEPHONE POLE
WITH WINGWALLS	POWER POLE
DROP INLET	PLACE
FENCE LINE	IN PLACE
GRAVEL PIT	REPLACE
SAND PIT	RIGHT
CLAY PIT	LEFT
ROCK QUARRY	INTERSECTION ANGLE
SPRINGS	RADIUS
MARSH	TANGENT
BRUSH OR TIMBER	LENGTH OF CURVE
HEDGE	POINT OF CURVE
ROCK LEDGE	POINT OF TANGENT
SAND	POINT OF INTERSECTION
EDGE OF CUT	VERTICAL CURVE
TOE OF EMBANKMENT	BENCH MARK
RAILROAD R/W LINE	ELEVATION
BUILDING (One Story Frame)	ACRES



BEG. PROJ. S.P. 02-509-02  
MINN. PROJ. S 560(8)

END PROJ. S.P. 02-509-02  
MINN. PROJ. S 560(8)

MINN. PROJ. S 560(8)

RECOMMENDED FOR APPROVAL

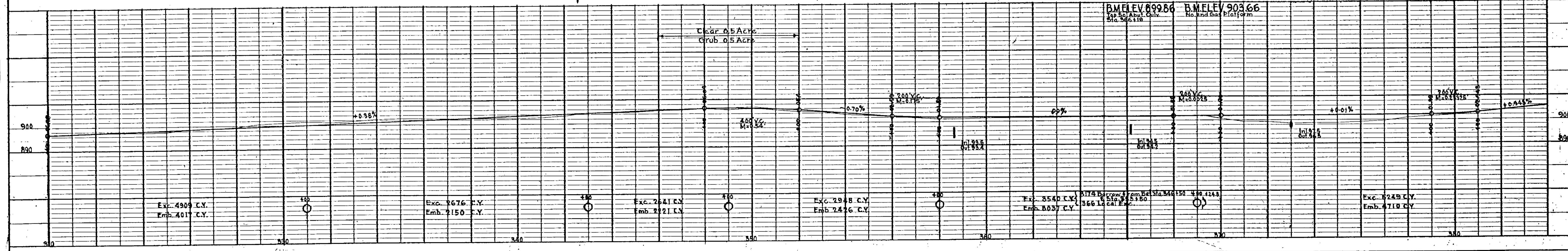
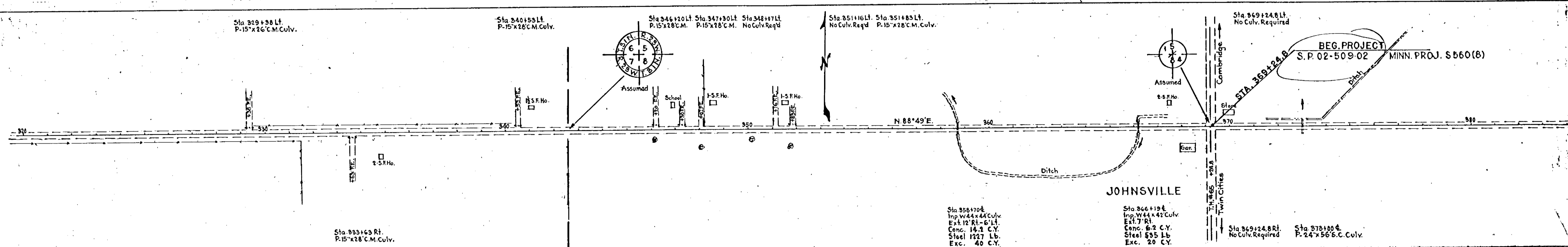
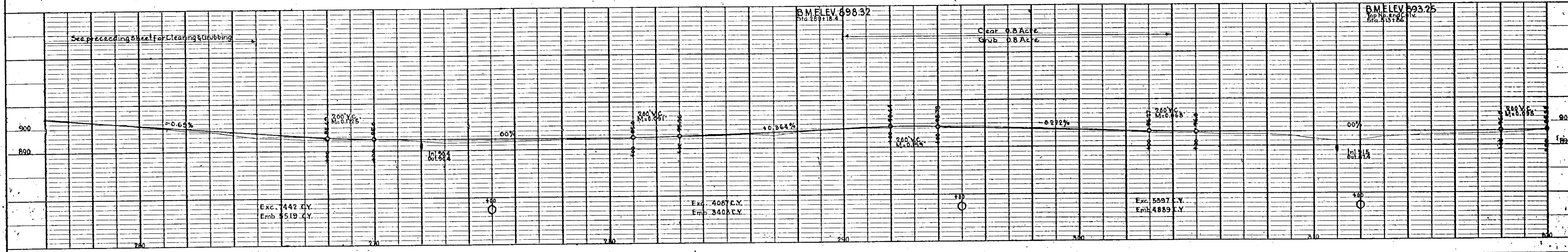
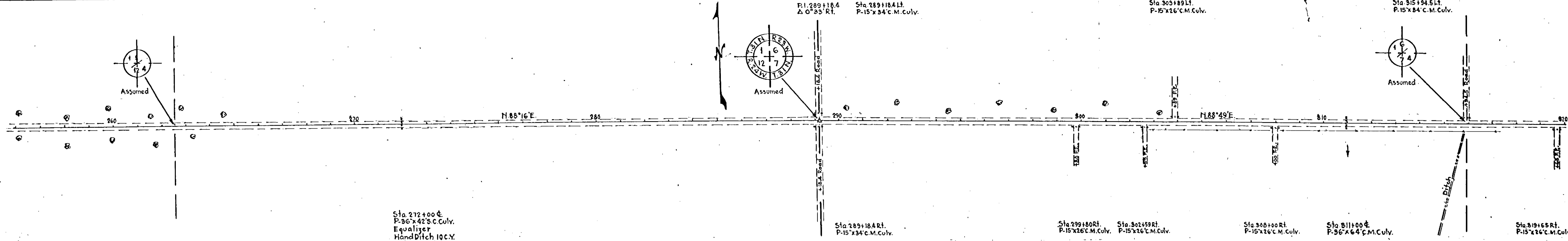
DISTRICT ENGINEER  
PUBLIC ROADS ADMINISTRATION  
FEDERAL WORKS AGENCY

APPROVED

DIVISION ENGINEER

Highway Engineer for ANOKA  
Recommended for Approval 2-1-52  
Recommended for Approval 2-10-52  
Approved 3/17 1952

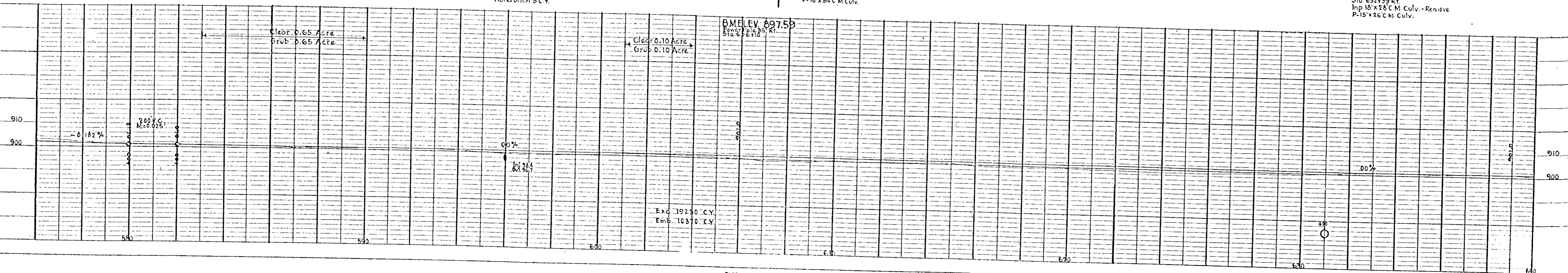
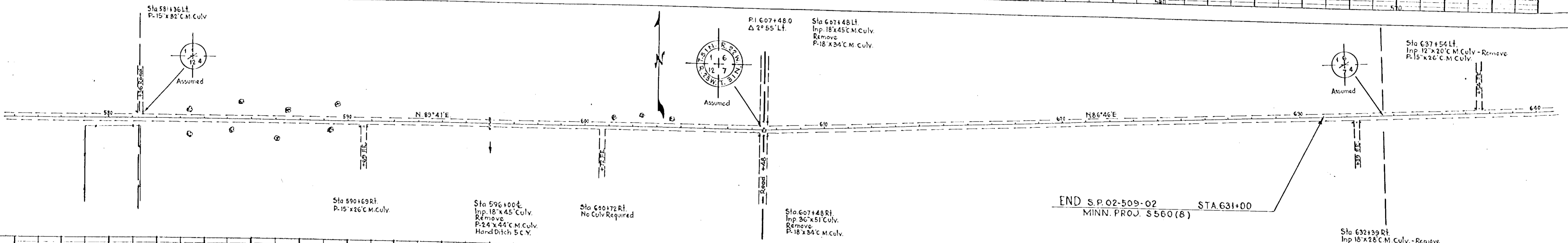
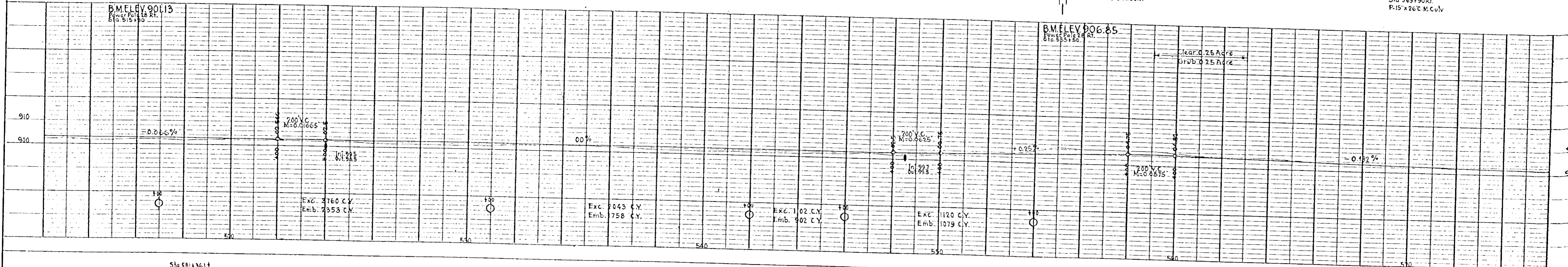
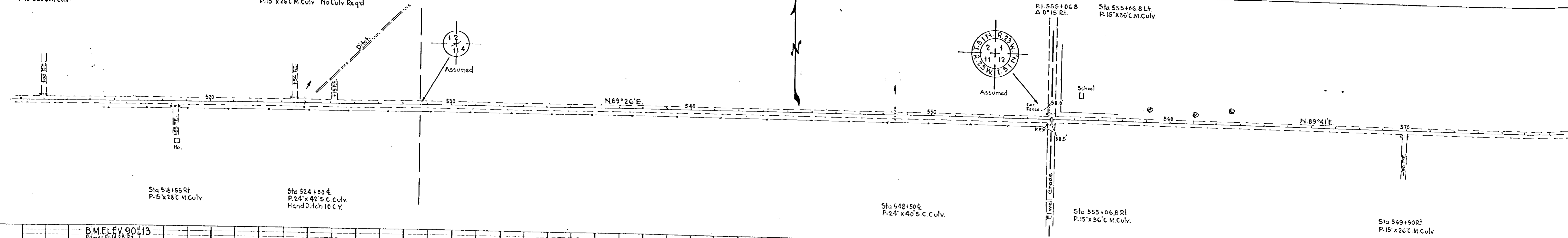




BEG. PROJECT  
S.P. 02-509-02  
MINN. PROJ. S 560(B)



Sta 513+00 Lt. P.15'x26' C.M. Culv.  
 Sta 523+54 Lt. P.15'x26' C.M. Culv. No Culv. Req'd  
 Sta 525+15 Lt.



END S.P. 02-509-02 STA. 631+00  
 MINN. PROJ. S560 (8)

PLATE B - PLAN PROFILE O.P.R. & R.E. STANDARD  
 THE FREDERICK FOST CO., CHICAGO