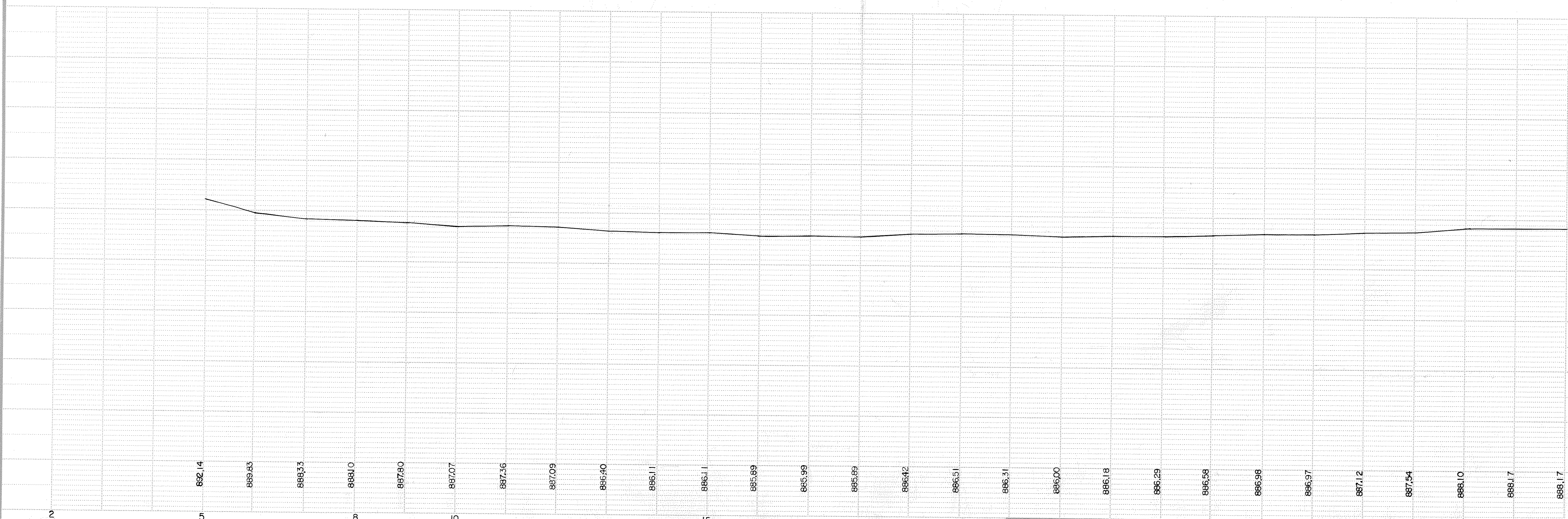
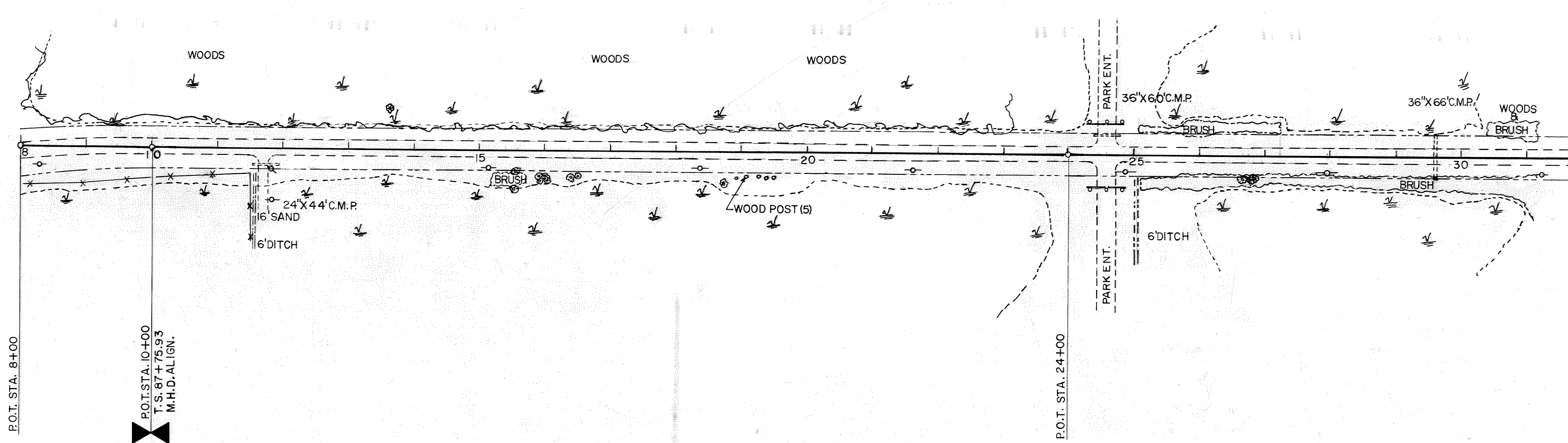


B.M.#1 ELEV. 913.44
BRASS PLUG S.E. COR.
BRIDGE#9830 OVER 35W
MHD 0280M

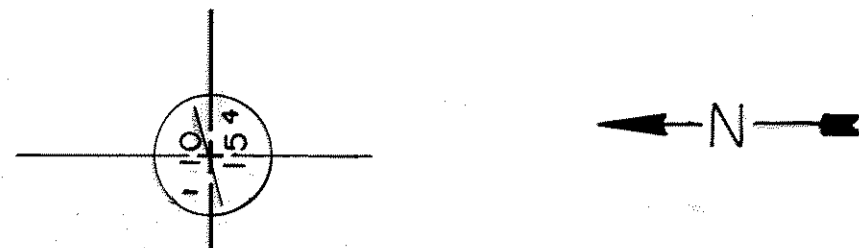
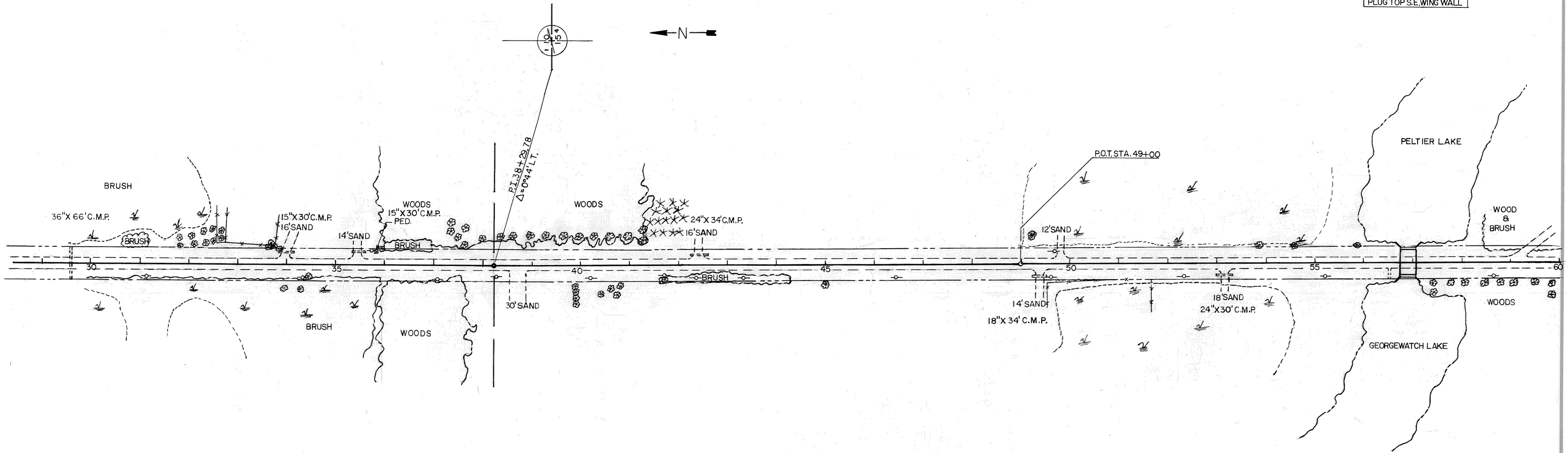
BM#2 ELEV. 885.83
R.R. SPIKE IN ROOT 30"
ASH STA. 6+60 LT. 50'

B.M.#3 ELEV. 884.23 R.R.
SPIKE IN ROOT DBL. 24"
ELM STA. 19+90 LT. 50'



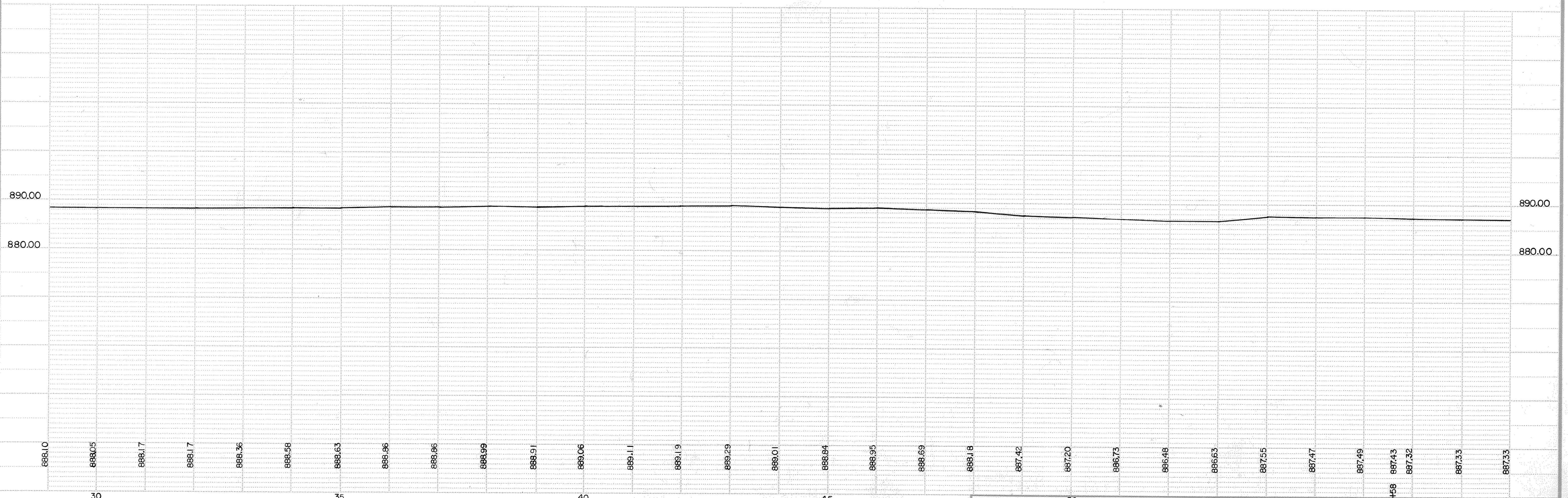
B.M.#4 ELEV. 889.30
 DBL. SPIKE IN POWER
 POLE STA. 34+50 LT. 150'

B.M.#6 ELEV. 883.79
 ST. PAUL WATER DEPT.
 BENCH NO. 67W BRASS
 PLUG TOP S.E. WING WALL



P.I. 38+29.78
 $\Delta = 0^{\circ}44' LT.$

P.O.T. STA. 49+00

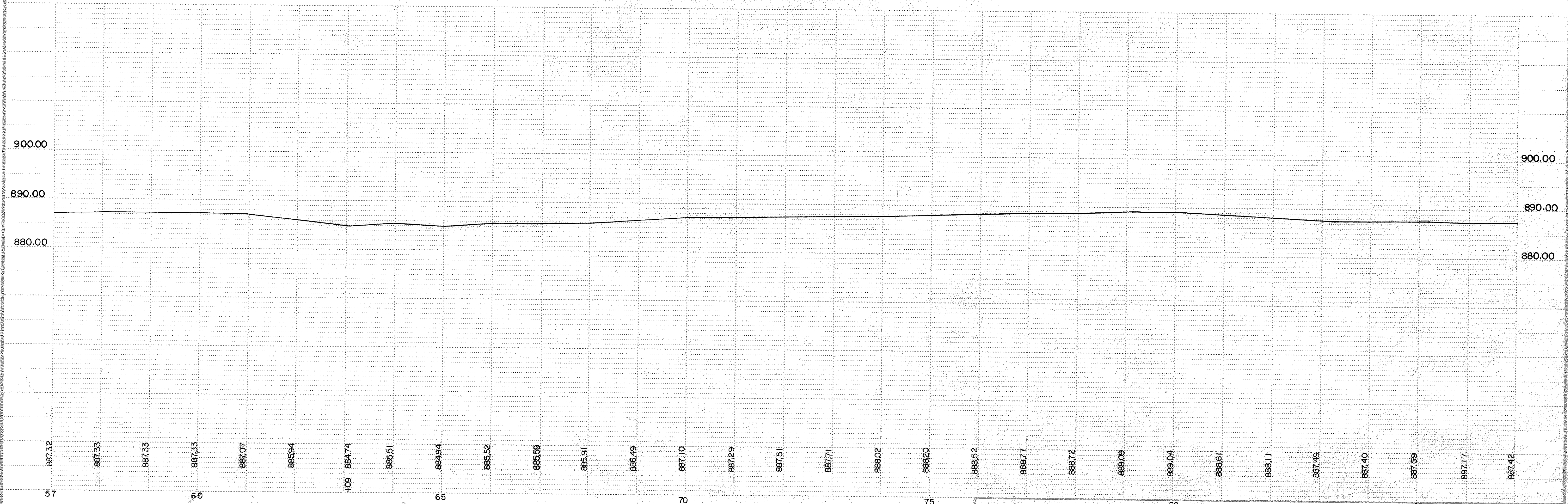
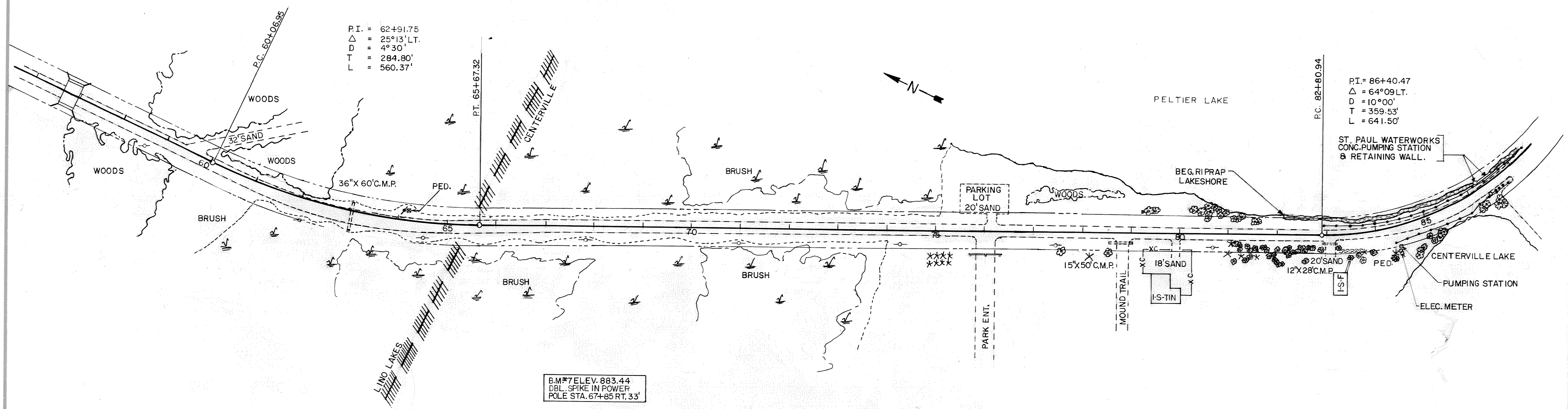


B.M.*8 ELEV. 888.11
RR SPIKE IN ROOT COT.
WOOD STA. 76+00 LT. 75'

P.I. = 62+91.75
Δ = 25°13' LT.
D = 4°30'
T = 284.80'
L = 560.37'

P.I. = 86+40.47
Δ = 64°09' LT.
D = 10°00'
T = 359.53'
L = 641.50'

B.M.*7 ELEV. 883.44
DBL. SPIKE IN POWER
POLE STA. 67+85 RT. 33'



B.M.#10 ELEV. 905.90
 TOP SW. COR. BOT. STEP
 1-1/2-S-F #7250
 STA. 98+45 LT. 90'

B.M.#11 ELEV. 899.75
 TOP S.E. COR. CONC. SLAB
 2-S-S #7238
 STA. 103+35 LT. 60'

B.M.#12 ELEV. 887.67 RR
 SPIKE IN ROOT 30" OUT.
 WOOD STA. 119+00 LT. 85'

PELTIER LAKE

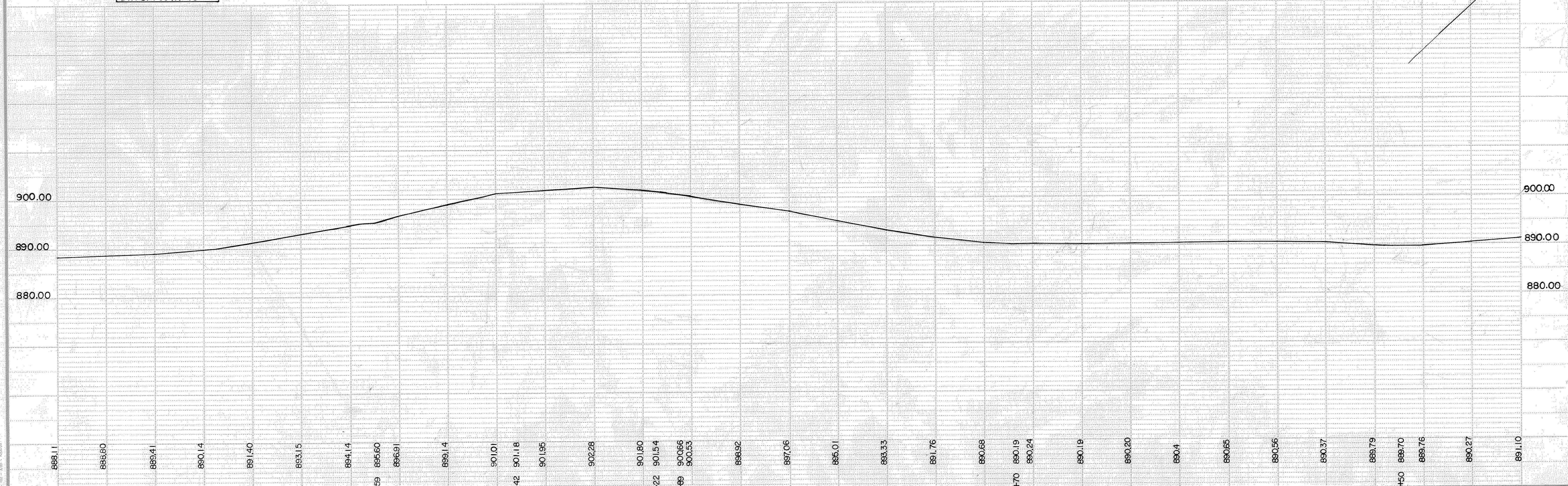
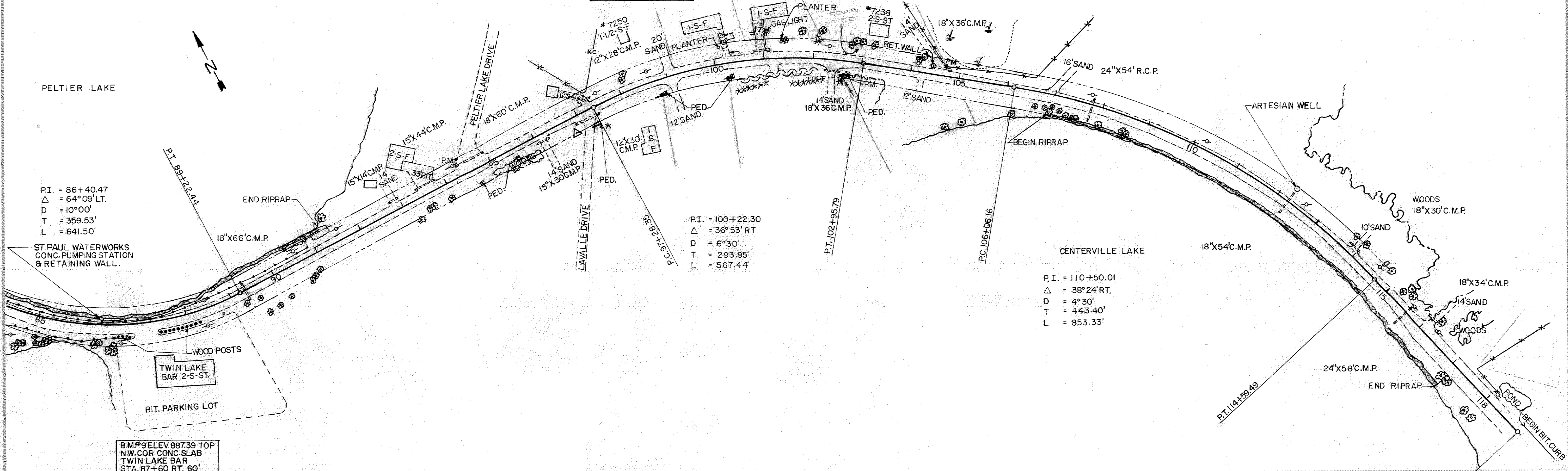
CENTERVILLE LAKE

P.I. = 86+40.47
 Δ = 64°09' LT.
 D = 10°00'
 T = 359.53'
 L = 641.50'

P.I. = 100+22.30
 Δ = 36°53' RT
 D = 6°30'
 T = 293.95'
 L = 567.44'

P.I. = 110+50.01
 Δ = 38°24' RT
 D = 4°30'
 T = 443.40'
 L = 853.33'

B.M.#9 ELEV. 887.39 TOP
 NW. COR. CONC. SLAB
 TWIN LAKE BAR
 STA. 87+60 RT. 60'



TELETYPE UNIT CONNECTION UNIT 1.86 100000

PT 65+05.75

PT 65+57.32

PT 82+21.14

PT 89+32.14

60 61 62 63 64 65 66 67 68 69 70 71 72 73 74 75 76 77 78 79 80 81 82

D.C. 4°30'

D.C. 10°00'

PT 108+20.35

PT 108+20.35

PT 108+20.35

PT 114+57.14

95 96 97 98 99 100 101 102 103 104 105 106 107 108 109 110 111 112 113 114 115 116 117 118 119 120

D.C. 6°30'

D.C. 4°30'

6 PROFILE

SUPER ELEVATION CHART