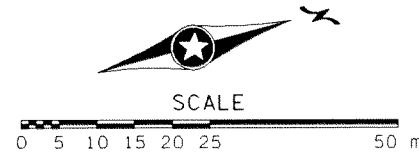
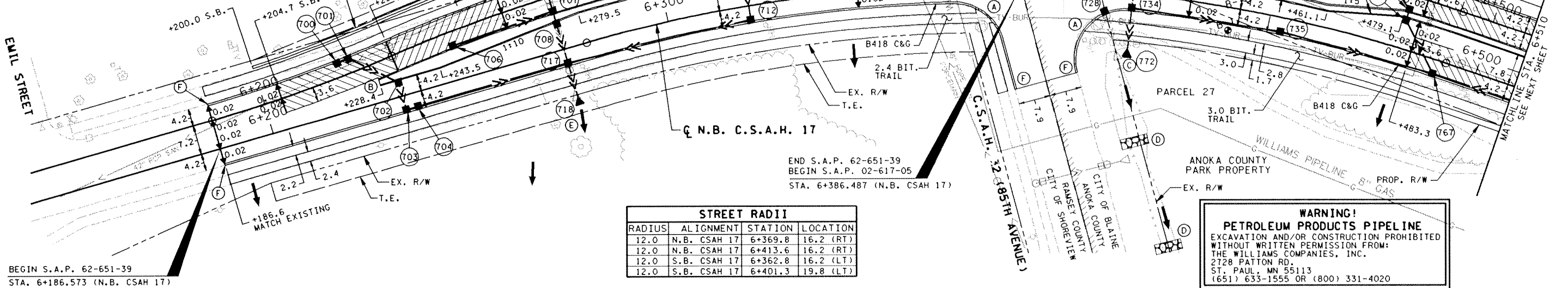


NOTES:  
 ALL DIMENSIONS ARE IN METERS UNLESS NOTED OTHERWISE.  
 ALL STATION CALL OUTS ARE N.B. C.S.A.H. 17 UNLESS NOTED OTHERWISE.  
 ALL STREET DIMENSIONS ARE TO FACE OF CURB UNLESS NOTED OTHERWISE.  
 SEE SIGNAL PLANS FOR TRAFFIC SIGNAL CONSTRUCTION.  
 SEE DRAINAGE TABULATION AND STORM PROFILES FOR STORM SEWER CONSTRUCTION.  
 SEE TABULATIONS FOR MISCELLANEOUS CONSTRUCTION.  
 PAVEMENT CROSS SLOPES ARE IN METER PER METER UNLESS NOTED OTHERWISE.

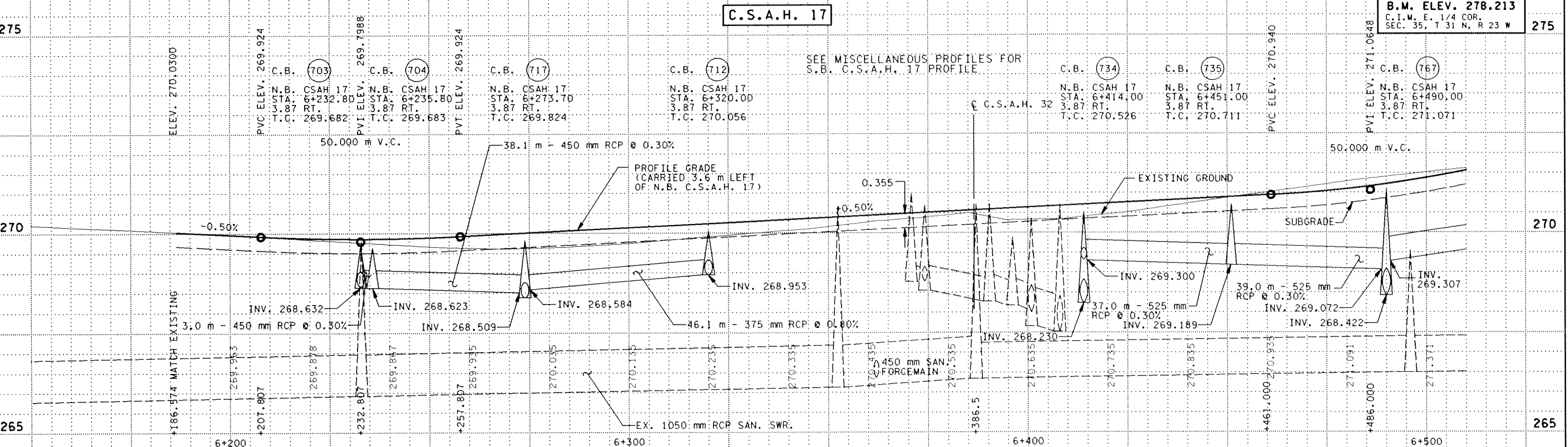


- (A) CONSTRUCT BITUMINOUS PEDESTRIAN CURB RAMP AND FORM CONCRETE CURB IN ACCORDANCE WITH DIMENSIONS GIVEN IN MN/DOT STD. PLATE M7036.
- (B) CONSTRUCT CONCRETE APPROACH NOSE IN ACCORDANCE WITH MN/DOT STD. PLATE 7113
- (C) STORM SEWER FROM CB 734 TO APRON 772 IS TEMPORARY, TO BE USED DURING STAGE 1 CONSTRUCTION. REMOVE PIPE AND APRON UPON COMPLETION OF STAGE 2 STORM SEWER CONSTRUCTION. BULKHEAD OPENING IN CB 734, FILL WITH SAND AND POUR 200 mm CONCRETE INVERT. ALL WORK REQUIRED FOR BULKHEAD CONSTRUCTION, SAND AND POURED INVERT SHALL BE CONSIDERED INCIDENTAL.
- (D) CONSTRUCT ROCK DITCH CHECK IN ACCORDANCE WITH MN/DOT STD, PLANS, LOCATION TO BE DETERMINED BY ENGINEER IN THE FIELD.
- (E) CONSTRUCT SEDIMENT TRAP FROM STA. 6+258 TO STA. 6+277.6. SEE SHEET NO. 22 FOR GRADING DETAIL.
- (F) TRANSITION B418 C&G TO MATCH EXISTING CURB TYPE.



STREET RADII			
RADIUS	ALIGNMENT	STATION	LOCATION
12.0	N.B. CSAH 17	6+369.8	16.2 (RT)
12.0	N.B. CSAH 17	6+413.6	16.2 (RT)
12.0	S.B. CSAH 17	6+362.8	16.2 (LT)
12.0	S.B. CSAH 17	6+401.3	19.8 (LT)

**WARNING!**  
**PETROLEUM PRODUCTS PIPELINE**  
 EXCAVATION AND/OR CONSTRUCTION PROHIBITED  
 WITHOUT WRITTEN PERMISSION FROM:  
 THE WILLIAMS COMPANIES, INC.  
 2728 PATTON RD.  
 ST. PAUL, MN 55113  
 (651) 633-1555 OR (800) 331-4020



NO	DATE	BY	CHKD	APPR	REVISION
1	7-31-00	VGG	BRW	MDH	REVISED PER FEDERAL AID STANDARDS
2	8-03-00	VGG	MDH	MDH	ADDED RETAINING WALL D
3	11-16-00	VGG	BRW	MDH	C.R. 110 S.A.P. NO. REVISION
4	11-16-00	VGG	BRW	MDH	REVISED C&G TYPE AND ADDED SEDIMENT TRAP
5	2-01-01	ELB	BRW	MDH	ADDED EXISTING SAN. SWR LABEL



I hereby certify that this plan, specification or report was prepared by me or under my direct supervision and that I am a duly Registered Professional Engineer under the laws of the State of Minnesota.  
*[Signature]*  
 Date: 4-16-2001 Reg. No. 21364

STATE AID PROJECT NO.  
 S.A.P. 02-617-05  
 S.A.P. 62-651-39  
 S.A.P. 106-020-14  
 CO. PROJECT NO.  
 C.P. 99-07-110

DRAWN BY  
 S. MARTINS  
 DESIGNED BY  
 M. HANSEN  
 CHECKED BY  
 B. WESTBY  
 COMM. NO.  
 0972842



**ANOKA COUNTY**  
 CONSTRUCTION PLAN AND PROFILE  
**C.S.A.H. 17 RECONSTRUCTION**  
 STA. 6+186 TO STA. 6+510

**SHEET**  
 54  
**OF**  
 136

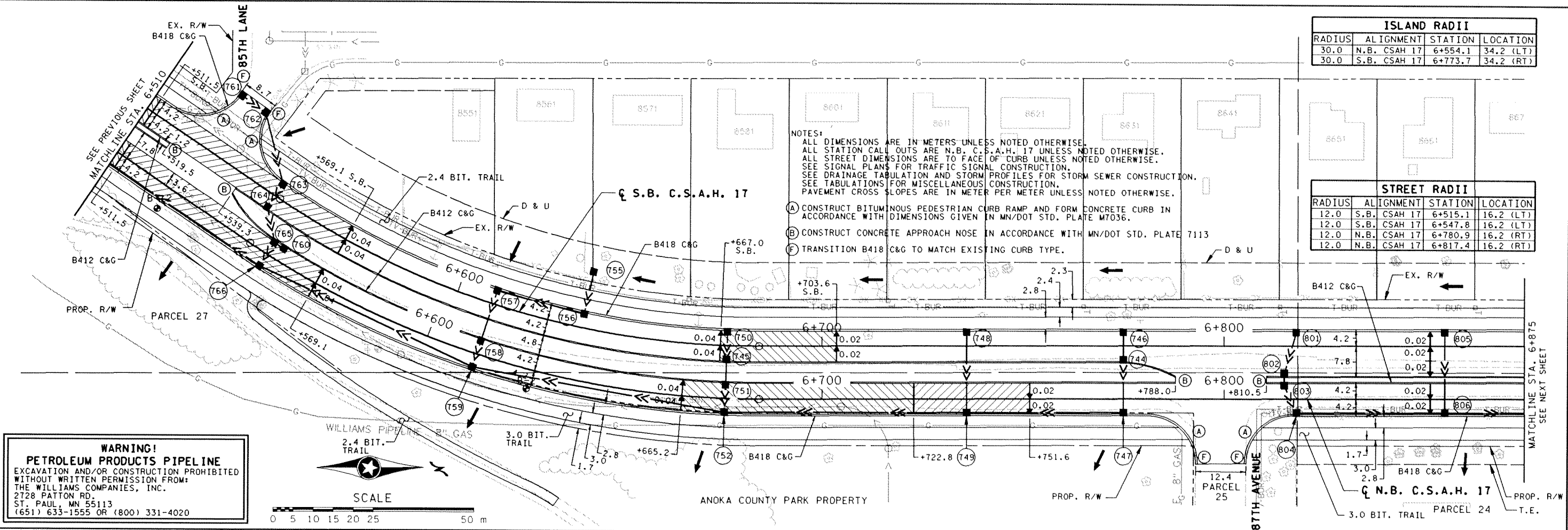
DESIGN FILE: I:\ACT\11\047\2842\PLAN\SOUTH\KDF\2842.dwg  
 PLOT FILE: I:\ACT\11\047\2842\PLAN\SOUTH\KDF\2842.plt  
 PLOTTED: 05-14-01 10:00  
 PLOT DATE/TIME: 04/12/2001 13:26:02

ISLAND RADII			
RADIUS	ALIGNMENT	STATION	LOCATION
30.0	N.B. CSAH 17	6+554.1	34.2 (LT)
30.0	S.B. CSAH 17	6+773.7	34.2 (RT)

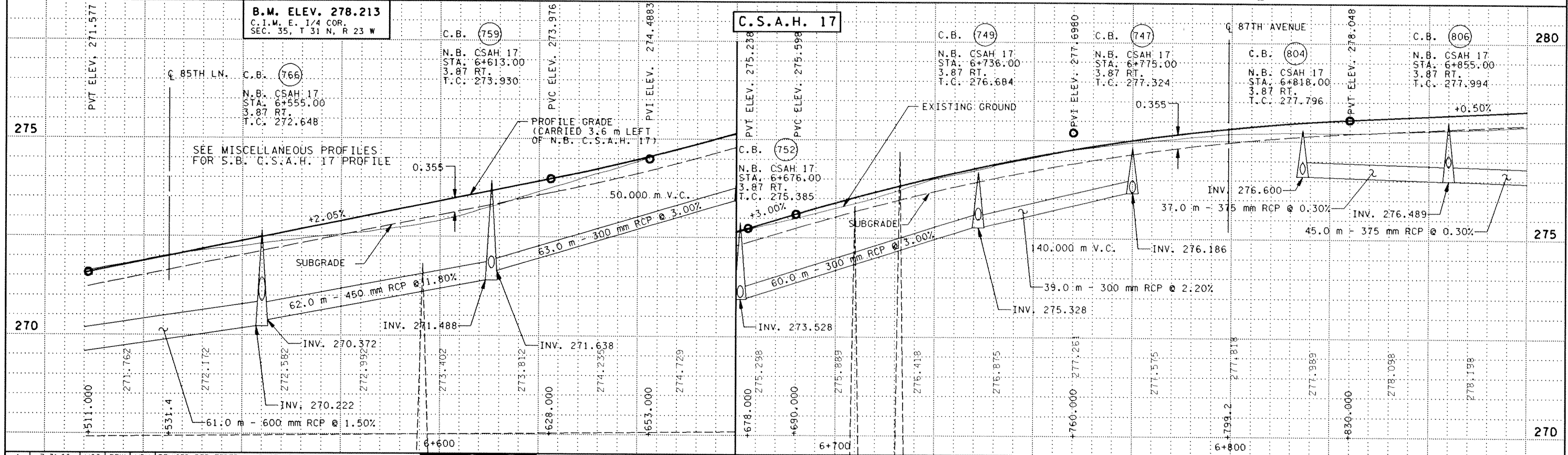
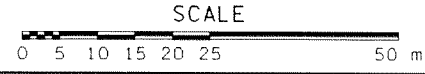
STREET RADII			
RADIUS	ALIGNMENT	STATION	LOCATION
12.0	S.B. CSAH 17	6+515.1	16.2 (LT)
12.0	S.B. CSAH 17	6+547.8	16.2 (LT)
12.0	N.B. CSAH 17	6+780.9	16.2 (RT)
12.0	N.B. CSAH 17	6+817.4	16.2 (RT)

NOTES:  
 ALL DIMENSIONS ARE IN METERS UNLESS NOTED OTHERWISE.  
 ALL STATION CALL OUTS ARE N.B. C.S.A.H. 17 UNLESS NOTED OTHERWISE.  
 ALL STREET DIMENSIONS ARE TO FACE OF CURB UNLESS NOTED OTHERWISE.  
 SEE SIGNAL PLANS FOR TRAFFIC SIGNAL CONSTRUCTION.  
 SEE DRAINAGE TABULATION AND STORM PROFILES FOR STORM SEWER CONSTRUCTION.  
 SEE TABULATIONS FOR MISCELLANEOUS CONSTRUCTION.  
 PAVEMENT CROSS SLOPES ARE IN METER PER METER UNLESS NOTED OTHERWISE.

(A) CONSTRUCT BITUMINOUS PEDESTRIAN CURB RAMP AND FORM CONCRETE CURB IN ACCORDANCE WITH DIMENSIONS GIVEN IN MN/DOT STD. PLATE M7036.  
 (B) CONSTRUCT CONCRETE APPROACH NOSE IN ACCORDANCE WITH MN/DOT STD. PLATE 7113  
 (F) TRANSITION B418 C&G TO MATCH EXISTING CURB TYPE.



**WARNING!**  
**PETROLEUM PRODUCTS PIPELINE**  
 EXCAVATION AND/OR CONSTRUCTION PROHIBITED  
 WITHOUT WRITTEN PERMISSION FROM:  
 THE WILLIAMS COMPANIES, INC.  
 2728 PATTON RD.  
 ST. PAUL, MN 55113  
 (651) 633-1555 OR (800) 331-4020



DESIGN FILE: I:\G11\11047\2842\PlanSouth\KDR\2842.cpd  
 PRG FILE: I:\G11\11047\2842\PlanSouth\KDR\2842.prf  
 PLOT SCALE: 1:500  
 PLOT DATE/TIME: 04/12/2001 13:26:57

NO	DATE	BY	CHKD	APPR	REVISION
1	7-31-00	VGG	BRW	MDH	REVISED PER FEDERAL AID STANDARDS
2	10-13-00	BRW	BRW	MDH	REVISED WILLIAMS PIPELINE ALIGNMENT @ 87TH AVE. SE QUAD
3	11-16-00	VGG	BRW	MDH	C.R. 110 S.A.P. NO. REVISION
4	11-16-00	VGG	BRW	MDH	ADDED C&G
5	2-01-01	ELB	BRW	MDH	ADDED CB's 744 AND 745

I hereby certify that this plan, specification or report was prepared by me or under my direct supervision and that I am a duly Registered Professional Engineer under the laws of the State of Minnesota.

*[Signature]*  
 Date: 4-16-2001 Reg. No. 21364

STATE AID PROJECT NO.  
 S.A.P. 02-617-05  
 S.A.P. 62-651-39  
 S.A.P. 106-020-14  
 CO. PROJECT NO.  
 C.P. 99-07-110

DRAWN BY  
 S. MARTINS  
 DESIGNED BY  
 M. HANSEN  
 CHECKED BY  
 B. WESTBY  
 COMM. NO.  
 0972842

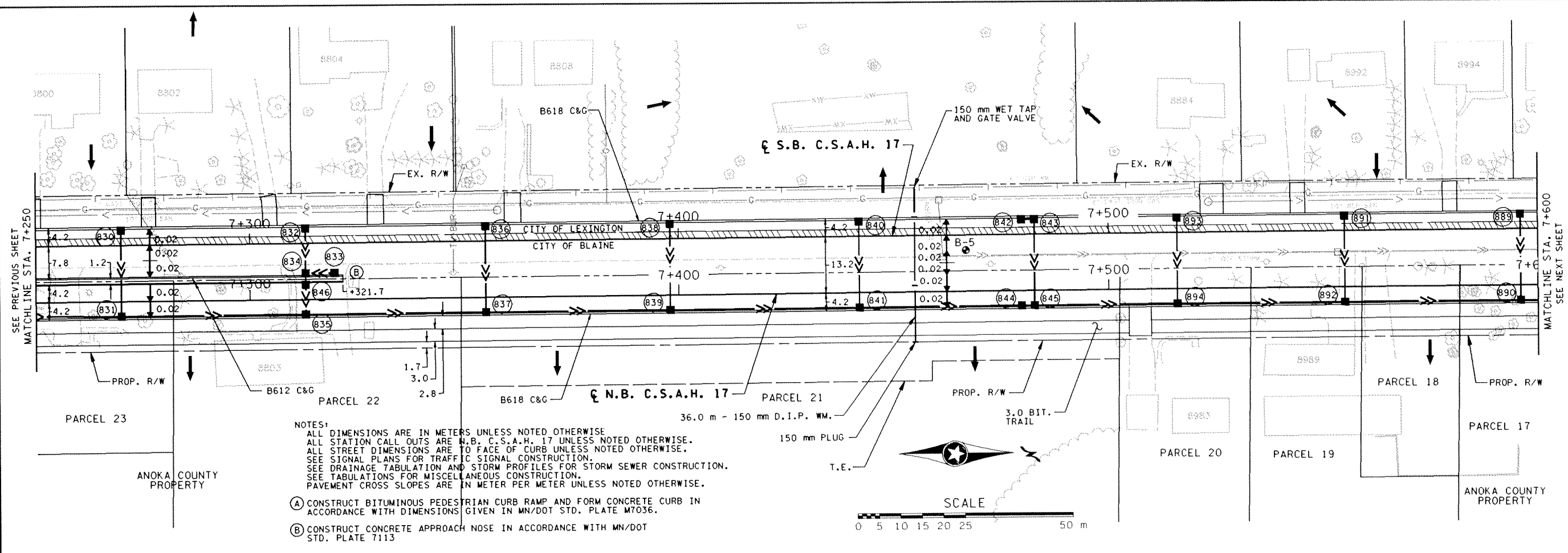


ANOKA COUNTY  
 CONSTRUCTION PLAN AND PROFILE  
**C.S.A.H. 17 RECONSTRUCTION**  
 STA 6+510 TO STA 6+875

SHEET  
 55  
 OF  
 136

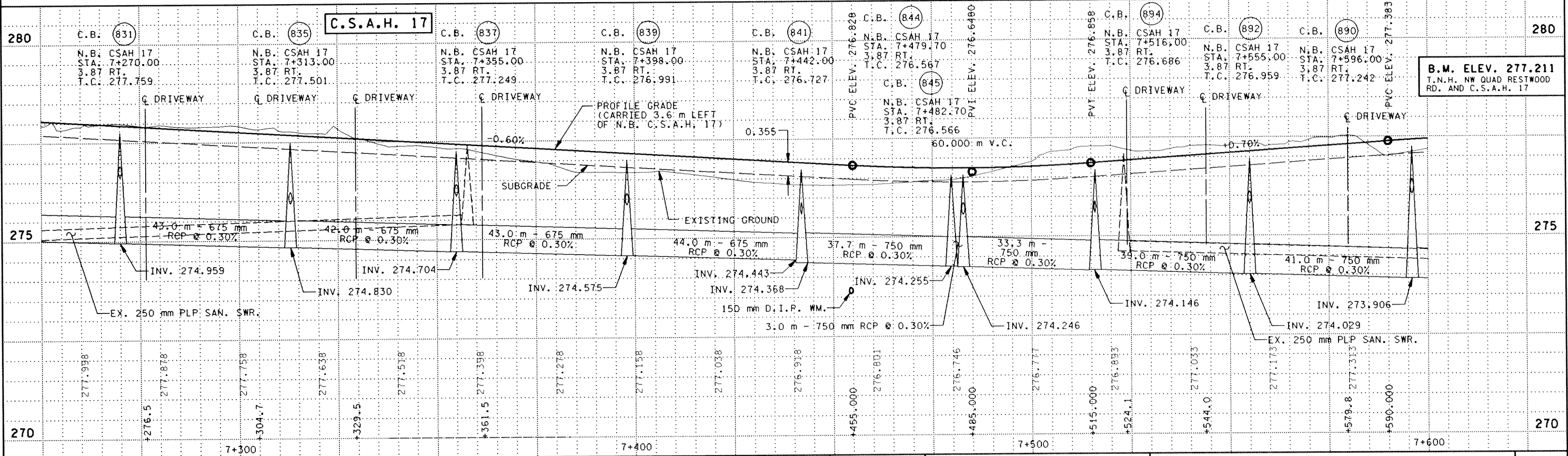






NOTES:  
 ALL DIMENSIONS ARE IN METERS UNLESS NOTED OTHERWISE.  
 ALL STATION CALL OUTS ARE N.B. C.S.A.H. 17 UNLESS NOTED OTHERWISE.  
 ALL STREET DIMENSIONS ARE TO FACE OF CURB UNLESS NOTED OTHERWISE.  
 SEE SIGNAL PLANS FOR TRAFFIC SIGNAL CONSTRUCTION.  
 SEE DRAINAGE TABULATION AND STORM PROFILES FOR STORM SEWER CONSTRUCTION.  
 SEE TABULATIONS FOR MISCELLANEOUS CONSTRUCTION.  
 PAVEMENT CROSS SLOPES ARE IN METER PER METER UNLESS NOTED OTHERWISE.

(A) CONSTRUCT BITUMINOUS PEDESTRIAN CURB RAMP AND FORM CONCRETE CURB IN ACCORDANCE WITH DIMENSIONS GIVEN IN MN/DOT STD. PLATE M7036.  
 (B) CONSTRUCT CONCRETE APPROACH NOSE IN ACCORDANCE WITH MN/DOT STD. PLATE 7113



NO	DATE	BY	CHK	APPR	REVISION
1	7-31-00	VGG	BRW	MDH	REVISED PER FEDERAL AID STANDARDS
2	11-16-00	VGG	BRW	MDH	C.R. 110 S.A.P. NO. REVISION
3	11-16-00	VGG	BRW	MDH	ADDED PARCEL 20 DRIVEWAY
4	2-01-01	ELB	BRW	MDH	ADDED EXISTING SAN SWR LABELS

**minnesota metric**

I hereby certify that this plan, specification or report was prepared by me or under my direct supervision and that I am a duly Registered Professional Engineer under the laws of the State of Minnesota.

*[Signature]*  
 Date: 4-16-2001 Reg. No. 21364

STATE AID PROJECT NO.  
 S.A.P. 02-617-05  
 S.A.P. 62-651-39  
 S.A.P. 106-020-14

CO. PROJECT NO.  
 C.P. 99-07-110

DRAWN BY  
 S. MARTINS  
 DESIGNED BY  
 M. HANSEN  
 CHECKED BY  
 B. WESTBY

DATE  
 10-98  
 10-98  
 1-99

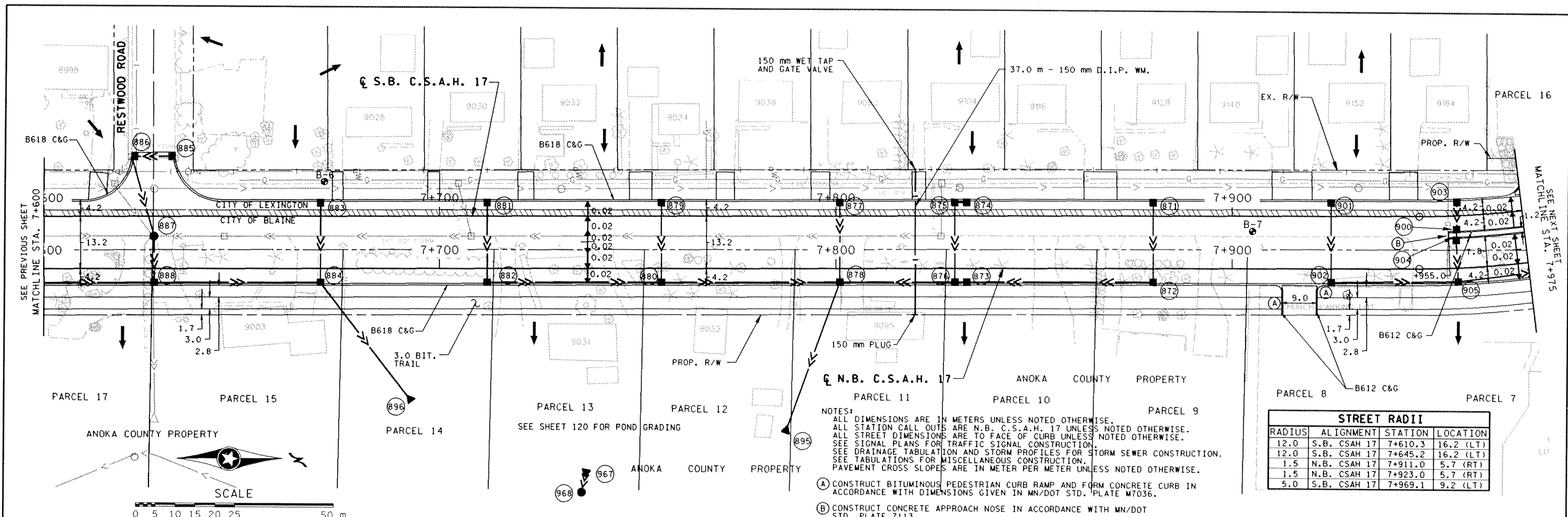
COMM. NO.  
 0972842

**SRF CONSULTING GROUP, INC.**

**ANOKA COUNTY**  
 CONSTRUCTION PLAN AND PROFILE  
**C.S.A.H. 17 RECONSTRUCTION**  
 STA 7+250 TO STA. 7+600

**SHEET 57 OF 136**

DESIGN FILE: H:\CIVIL\11\047\2842\PlanSouth\KDR\2842.cpd  
 PRF FILE: H:\CIVIL\11\047\2842\PlanSouth\KDR\2842.prf  
 PLOTTER: MS-HP550  
 PLOT SCALE: 1:1000  
 PLOT DATE/TIME: 04/12/2001 13:43:12

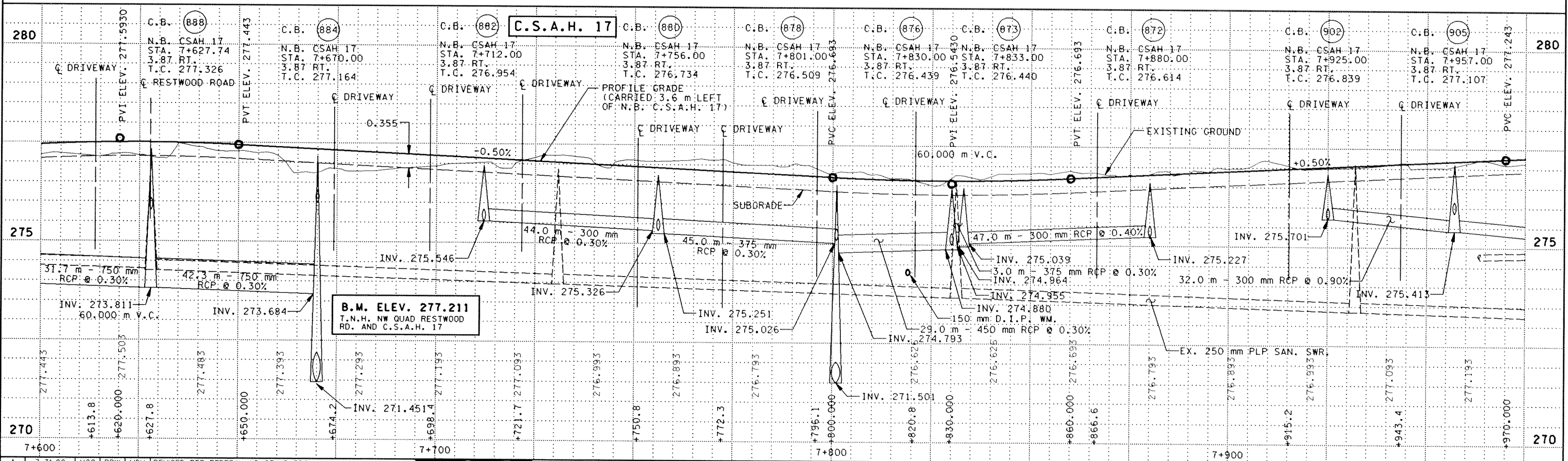


**STREET RADII**

RADIUS	ALIGNMENT	STATION	LOCATION
12.0	S.B. CSAH 17	7+610.3	16.2 (LT)
12.0	S.B. CSAH 17	7+645.2	16.2 (LT)
1.5	N.B. CSAH 17	7+911.0	5.7 (RT)
1.5	N.B. CSAH 17	7+923.0	5.7 (RT)
5.0	S.B. CSAH 17	7+969.1	9.2 (LT)

**NOTES:**  
 ALL DIMENSIONS ARE IN METERS UNLESS NOTED OTHERWISE.  
 ALL STATION CALL OUTS ARE N.B. C.S.A.H. 17 UNLESS NOTED OTHERWISE.  
 ALL STREET DIMENSIONS ARE TO FACE OF CURB UNLESS NOTED OTHERWISE.  
 SEE SIGNAL PLANS FOR TRAFFIC SIGNAL CONSTRUCTION.  
 SEE DRAINAGE TABULATION AND STORM PROFILES FOR STORM SEWER CONSTRUCTION.  
 SEE TABULATIONS FOR MISCELLANEOUS CONSTRUCTION.  
 PAVEMENT CROSS SLOPES ARE IN METER PER METER UNLESS NOTED OTHERWISE.

(A) CONSTRUCT BITUMINOUS PEDESTRIAN CURB RAMP AND FORM CONCRETE CURB IN ACCORDANCE WITH DIMENSIONS GIVEN IN MN/DOT STD. PLATE M7036.  
 (B) CONSTRUCT CONCRETE APPROACH NOSE IN ACCORDANCE WITH MN/DOT STD. PLATE 7113



PLOT DATE/TIME: 04/12/2001 13:43:57  
 PLOT SCALE: 25:657000  
 PLOTTER: MS-JPES:MK  
 FILE: N:\G1\1\1\2842\PlanSouth\KDR\2842.cpe  
 PLOT FILE: N:\G1\1\1\2842\PlanSouth\KDR\2842.plt

NO	DATE	BY	CKD	APPR	REVISION
1	7-31-00	VGG	BRW	MDH	REVISED PER FEDERAL AID STANDARDS
2	11-16-00	VGG	BRW	MDH	C.R. 110 S.A.P. NO. REVISION
3	2-01-01	ELB	BRW	MDH	ADDED EXISTING SAN. SWR. LABEL

I hereby certify that this plan, specification or report was prepared by me or under my direct supervision and that I am a duly Registered Professional Engineer under the laws of the State of Minnesota.

*[Signature]*  
 Date: 4-16-2001 Reg. No. 21364

STATE AID PROJECT NO.  
 S.A.P. 02-617-05  
 S.A.P. 62-651-39  
 S.A.P. 106-020-14

CO. PROJECT NO.  
 C.P. 99-07-110

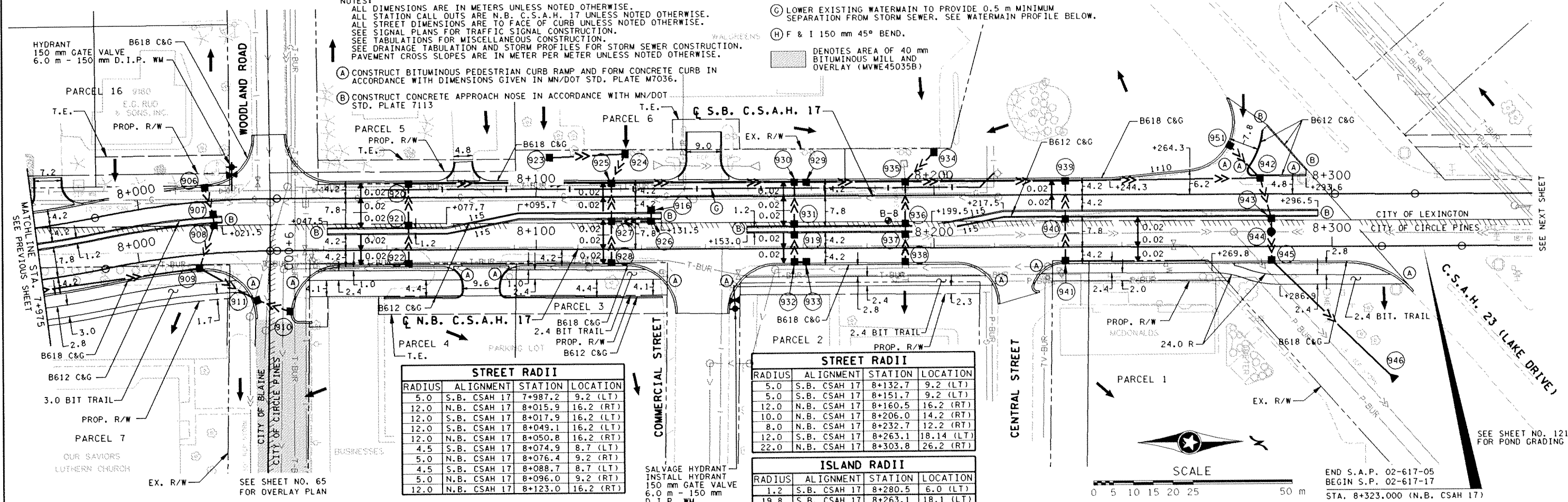
**ANOKA COUNTY**  
 CONSTRUCTION PLAN AND PROFILE  
**C.S.A.H. 17 RECONSTRUCTION**  
 STA. 7+600 TO STA. 7+975

**SHEET**  
 58  
**OF**  
 136

NOTES:  
 ALL DIMENSIONS ARE IN METERS UNLESS NOTED OTHERWISE.  
 ALL STATION CALL OUTS ARE N.B. C.S.A.H. 17 UNLESS NOTED OTHERWISE.  
 ALL STREET DIMENSIONS ARE TO FACE OF CURB UNLESS NOTED OTHERWISE.  
 SEE SIGNAL PLANS FOR TRAFFIC SIGNAL CONSTRUCTION.  
 SEE TABULATIONS FOR MISCELLANEOUS CONSTRUCTION.  
 SEE DRAINAGE TABULATION AND STORM PROFILES FOR STORM SEWER CONSTRUCTION.  
 PAVEMENT CROSS SLOPES ARE IN METER PER METER UNLESS NOTED OTHERWISE.

NOTES:  
 (C) LOWER EXISTING WATERMAIN TO PROVIDE 0.5 m MINIMUM SEPARATION FROM STORM SEWER. SEE WATERMAIN PROFILE BELOW.  
 (H) F & I 150 mm 45° BEND.  
 (A) DENOTES AREA OF 40 mm BITUMINOUS MILL AND OVERLAY (MVWE45035B)

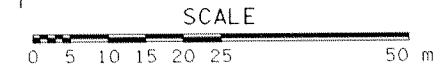
- (A) CONSTRUCT BITUMINOUS PEDESTRIAN CURB RAMP AND FORM CONCRETE CURB IN ACCORDANCE WITH DIMENSIONS GIVEN IN MN/DOT STD. PLATE M7036.
- (B) CONSTRUCT CONCRETE APPROACH NOSE IN ACCORDANCE WITH MN/DOT STD. PLATE 7113



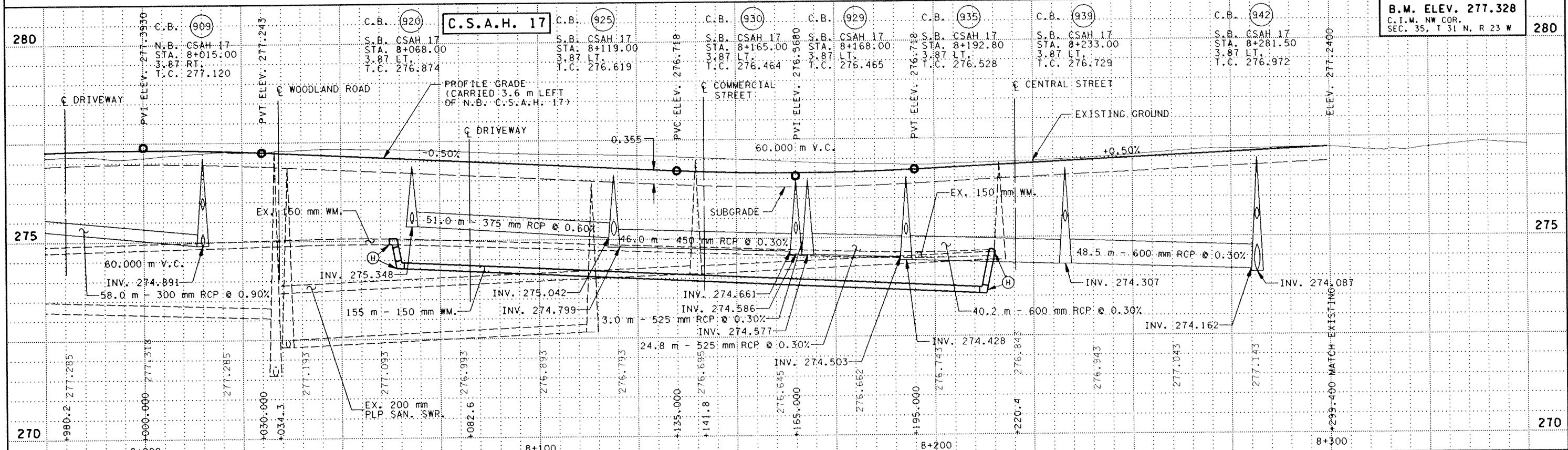
RADIUS	ALIGNMENT	STATION	LOCATION
5.0	S.B. CSAH 17	7+987.2	9.2 (LT)
12.0	N.B. CSAH 17	8+015.9	16.2 (RT)
12.0	S.B. CSAH 17	8+017.9	16.2 (LT)
12.0	S.B. CSAH 17	8+049.1	16.2 (LT)
12.0	N.B. CSAH 17	8+050.8	16.2 (RT)
4.5	S.B. CSAH 17	8+074.9	8.7 (LT)
5.0	N.B. CSAH 17	8+076.4	9.2 (RT)
4.5	S.B. CSAH 17	8+088.7	8.7 (LT)
5.0	N.B. CSAH 17	8+096.0	9.2 (RT)
12.0	N.B. CSAH 17	8+123.0	16.2 (RT)

RADIUS	ALIGNMENT	STATION	LOCATION
5.0	S.B. CSAH 17	8+132.7	9.2 (LT)
5.0	S.B. CSAH 17	8+151.7	9.2 (LT)
12.0	N.B. CSAH 17	8+160.5	16.2 (RT)
10.0	N.B. CSAH 17	8+206.0	14.2 (RT)
8.0	N.B. CSAH 17	8+232.7	12.2 (RT)
12.0	S.B. CSAH 17	8+263.1	18.1 (LT)
22.0	N.B. CSAH 17	8+303.8	26.2 (RT)

RADIUS	ALIGNMENT	STATION	LOCATION
1.2	S.B. CSAH 17	8+280.5	6.0 (LT)
19.8	S.B. CSAH 17	8+263.1	18.1 (LT)



END S.A.P. 02-617-05  
 BEGIN S.P. 02-617-17  
 STA. 8+323.000 (N.B. CSAH 17)



NO	DATE	BY	CHKD	APPR	REVISION
1	7-31-00	VGG	BRW	MDH	REVISED PER FEDERAL AID STANDARDS
2	11-16-00	VGG	BRW	MDH	C.R. 110 S.A.P. NO. REVISION
3	11-16-00	VGG	BRW	MDH	REVISED NOTES FOR WATERMAIN LOWERING
4	2-01-01	ELB	BRW	MDH	ADDED EXISTING SAN. SWR. LABEL



I hereby certify that this plan, specification or report was prepared by me or under my direct supervision and that I am a duly Registered Professional Engineer under the laws of the State of Minnesota.  
 Date: 4-16-2001 Reg. No. 21364

STATE AID PROJECT NO.  
 S.A.P. 02-617-05  
 S.A.P. 62-651-39  
 S.A.P. 106-020-14  
 CO. PROJECT NO.  
 C.P. 99-07-10

DRAWN BY  
 S. MARTINS  
 DESIGNED BY  
 M. HANSEN  
 CHECKED BY  
 B. WESTBY  
 COMM. NO.  
 0972842



ANOKA COUNTY  
 CONSTRUCTION PLAN AND PROFILE  
 C.S.A.H. 17 RECONSTRUCTION  
 STA. 7+975 TO STA. 8+310

SHEET  
 59  
 OF  
 136

DESIGN FILE: H:\G11\11047\2842\VP\onsouth\kdr\2842.cpf  
 PLOT FILE: H:\G11\11047\2842\VP\onsouth\kdr\2842.plt  
 PLOTTER: MS-HP5500  
 PLOT SCALE: 25:657000  
 PLOT DATE/TIME: 04/13/2001 07:50:26