



FORM 21165-10-58

**STATEMENT OF ESTIMATED QUANTITIES**

ITEM NO.	ITEM	UNIT	TOTAL ESTIMATED QUANTITIES	TOTAL FINAL QUANTITIES
2101.501	CLEARING	ACRE	0.20	
2101.502	CLEARING	TREE	15	
2101.506	GRUBBING	ACRE	0.20	
2101.507	GRUBBING	TREE	18	
2104.501	REMOVE PORTABLE CULVERTS	LIN. FT.	414	
2104.502	REMOVE PAVEMENT	SQ. YD.	152	
2104.504	REMOVE CURB	LIN. FT.	240	
2104.511	REMOVE MANHOLES AND CATCH BASINS	STRUCT.	1	
2105.501	CLASS A EXCAVATION	CU. YD.	5556	
2105.510	TOPSOIL COVERING	CU. YD.(V.M)	514	
2105.514	SALVAGED BITUMINOUS MIXTURE ON ROAD	CU. YD.(V.M)	3700	
2207.503	BITUMINOUS MATERIAL FOR MIXTURE	GAL.	89,468	
2207.503	BITUMINOUS MATERIAL FOR FOG	GAL.	4,473	
2207.512	BIT. STAB. SUBGRADE (4" THICK)	SQ. YD.	44,734	
2130.501	WATER	M-GAL.	22	
2331.502	BIT. MATL. FOR TACK COAT	GAL.	2,250	
2331.504	BIT. MATL. FOR MIXTURE	TON	185	
2331.508	WEARING COURSE MIXTURE	TON	3,464	
2501.503	STRUCTURE EXCAVATION ( CLASS II )	CU. YD.	100	
2501.511	F.&I. 12" C.M.P. CULV.	LIN. FT.	18	
2501.521	F.&I. 36" R.C.P. CULV. CLASS 3	LIN. FT.	64	
2451.511	SAND-GRAVEL SUBFOUNDATION	CU. YD.	50	
2515.531	F. & I. MET. APRONS FOR 12" C.M.P.	APRON	1	
2515.541	F. & I. CONC. APRONS FOR 36" S.C.P.	APRON	2	
2503.512	F. & I. 12" R.C.P. SEWER ( CLASS 2 )	LIN. FT.	174	
2503.512	F. & I. 18" R.C.P. SEWER ( CLASS 3 )	LIN. FT.	50	
2506.507	CONSTRUCT CATCH BASINS, DESIGN C OR G.	LIN. FT.	31.9	
2506.511	RECONSTRUCT MANHOLES	LIN. FT.	3.0	
2506.512	RECONSTRUCT CATCH BASINS	LIN. FT.	6.0	
2506.516	F. & I. CASTING ASSEMBLIES A GR. 810 FR. 801 C. BOX 821B	ASSEM.	7	
2506.516	F. & I. CASTING ASSEMBLIES B NEENAH NO. 3246-C	ASSEM.	2	
2506.522	ADJ. FRAME & RING CASTINGS	ASSEM.	12	
504.685	ADJ. WATER GATE HOUSING	ASSEM.	10	
2574.501	ROADSIDE SEEDING	ACRE	1	
2576.501	SODDING	SQ. YD.	8567	

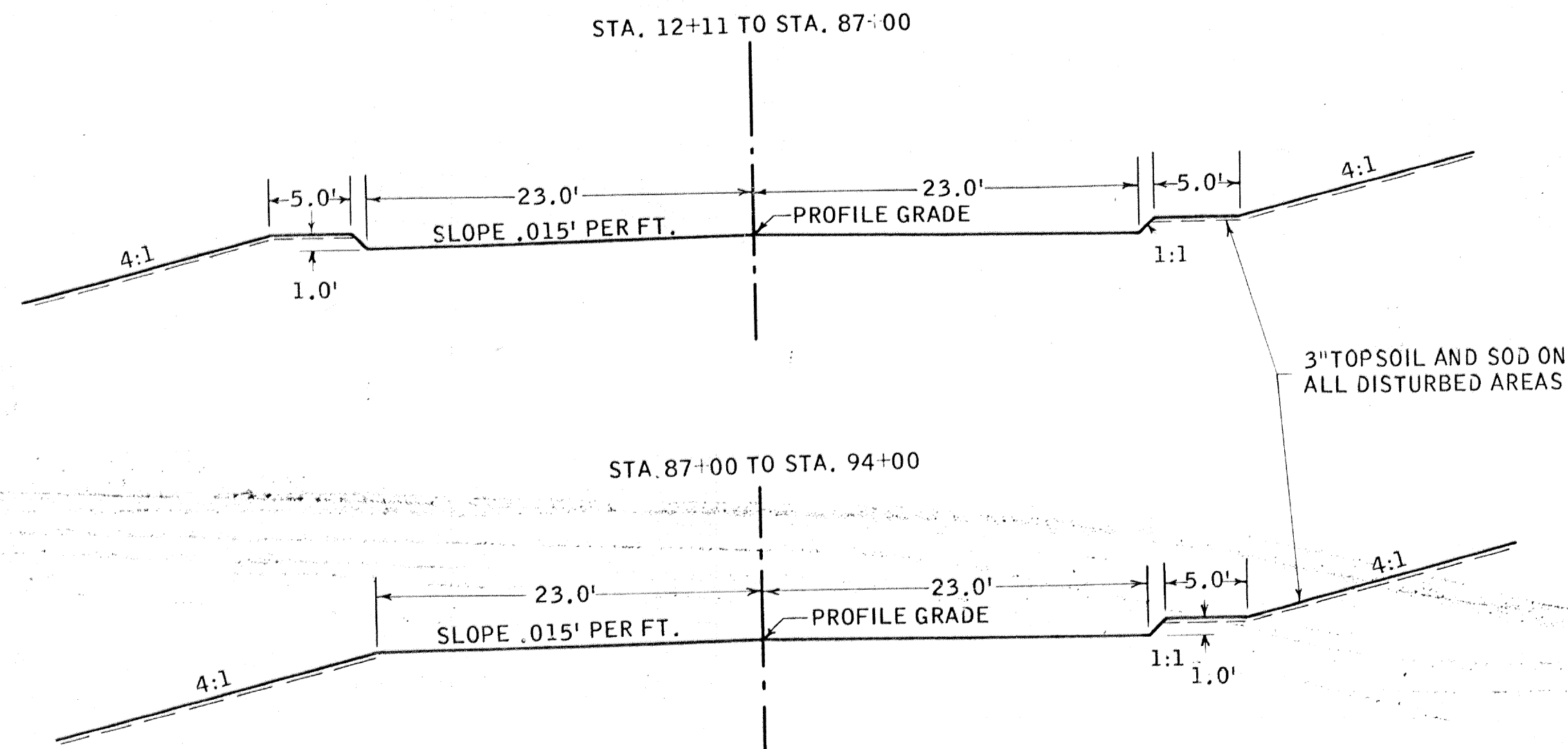
1 COUNTY SHALL FURNISH SEED

FORM 21166-10-58

The following Standard Detail plates, approved by the Bureau of Public Roads, shall apply on this project.

PLATE NO.	DESCRIPTION
3000 B	REINFORCED CONCRETE PIPE
3100 C	CONCRETE APRON FOR REINFORCED CONCRETE PIPE
3123 B	METAL APRON FOR C.M. PIPES
4002 C	MANHOLE OR CATCH BASIN ( DESIGN C )
4006 D	MANHOLE OR CATCH BASIN ( DESIGN G )
4126 C	CATCH BASIN FRAME CASTING
4149 B	GRATE CASTING FOR CATCH BASIN
4161 C	CURB BOX CASTING FOR CATCH BASIN
8000 A, 8001 & 8009	STANDARD BARRICADES

**TYPICAL GRADING SECTIONS**



**SPECIAL DETAILS**

CONNECTING NEW STORM SEWER TO INPLACE CATCH BASINS WILL BE CONSIDERED INCIDENTAL TO F.&I. STORM SEWER.

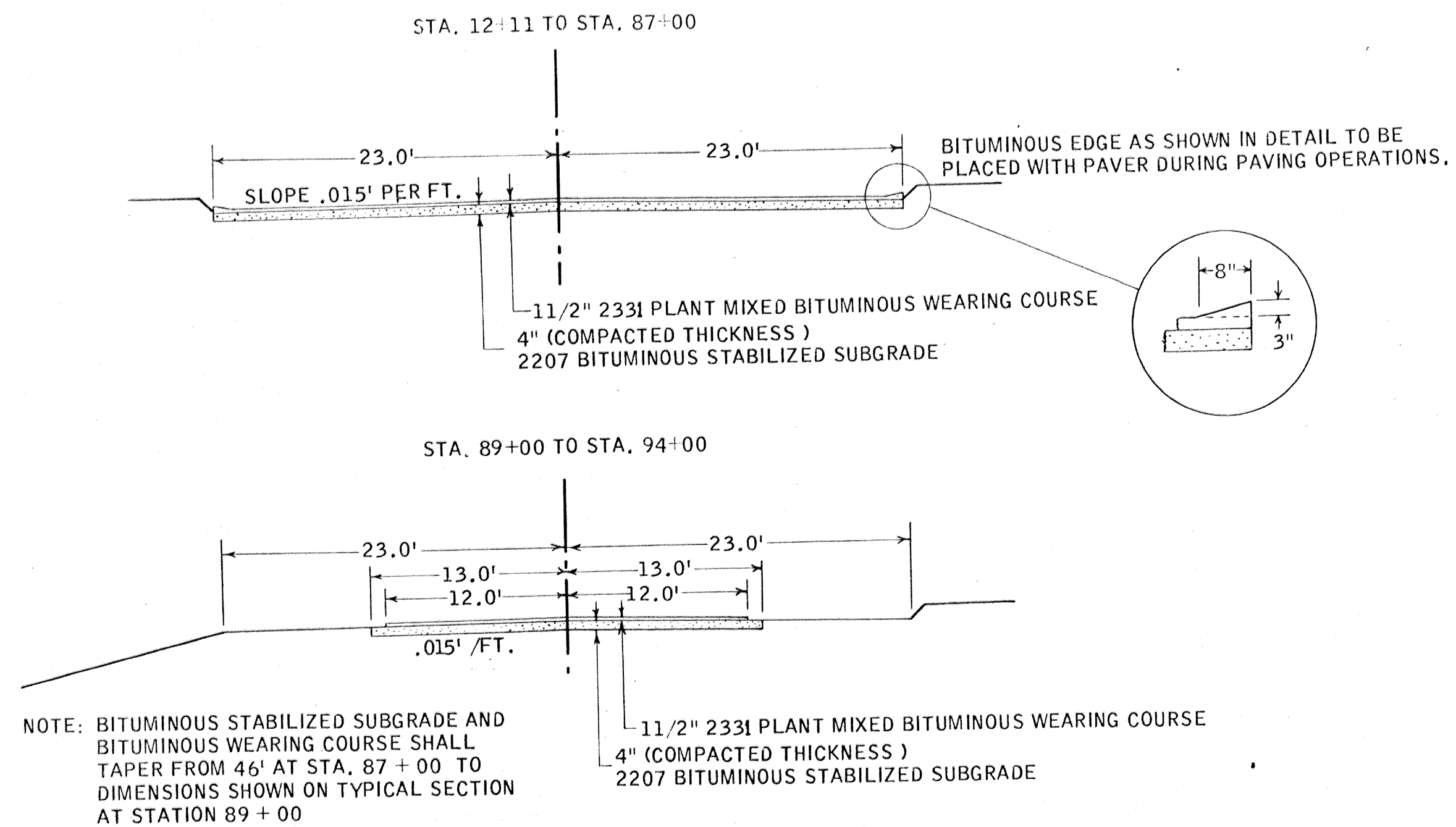
PLACE TOPSOIL ON SLOPES BEFORE SODDING AT DIRECTION OF ENGINEER.

SOD TO BE PLACED AT DIRECTION OF ENGINEER.

CONTRACTOR WILL BE REQUIRED TO WORK AROUND UTILITY POLES.

CATCH BASINS REQUIRING NEENAH TYPE CASTINGS WILL REQUIRE SOME CARE IN CONSTRUCTION TO ACCOMMODATE THIS HIGHER COMPACTED CASTING.

**TYPICAL BITUMINOUS SECTIONS**



NOTE: BITUMINOUS STABILIZED SUBGRADE AND BITUMINOUS WEARING COURSE SHALL TAPER FROM 46' AT STA. 87 + 00 TO DIMENSIONS SHOWN ON TYPICAL SECTION AT STATION 89 + 00

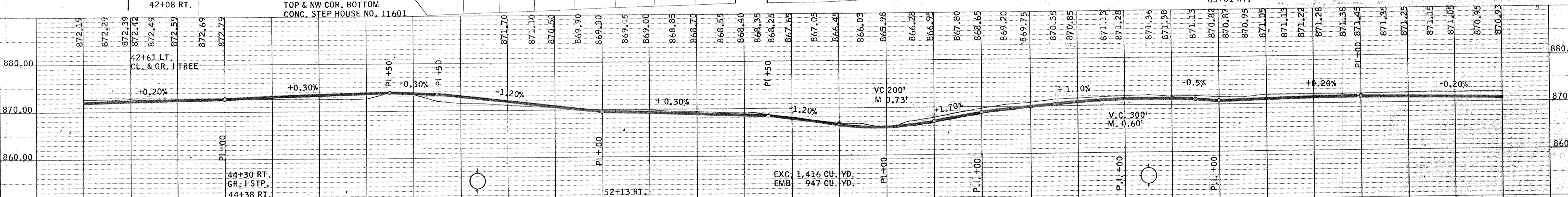
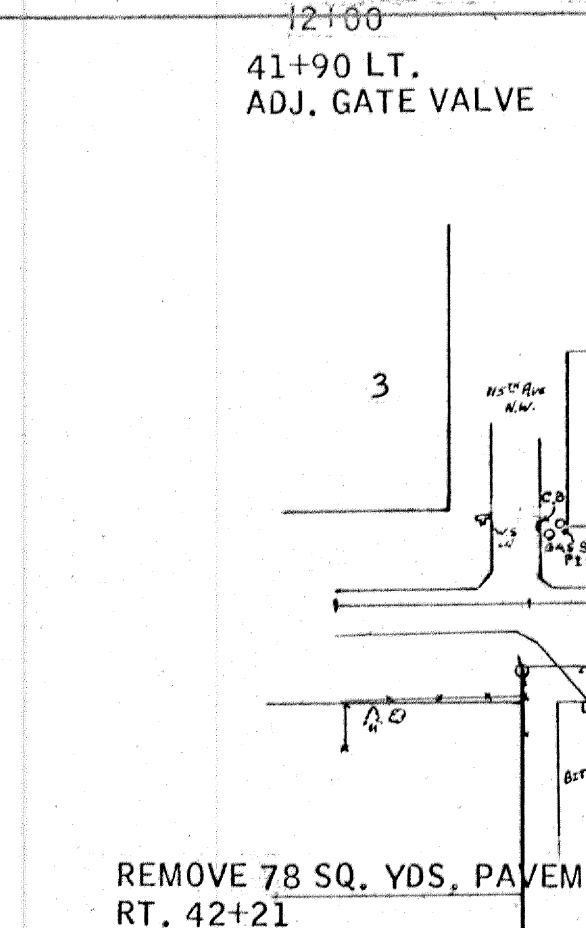
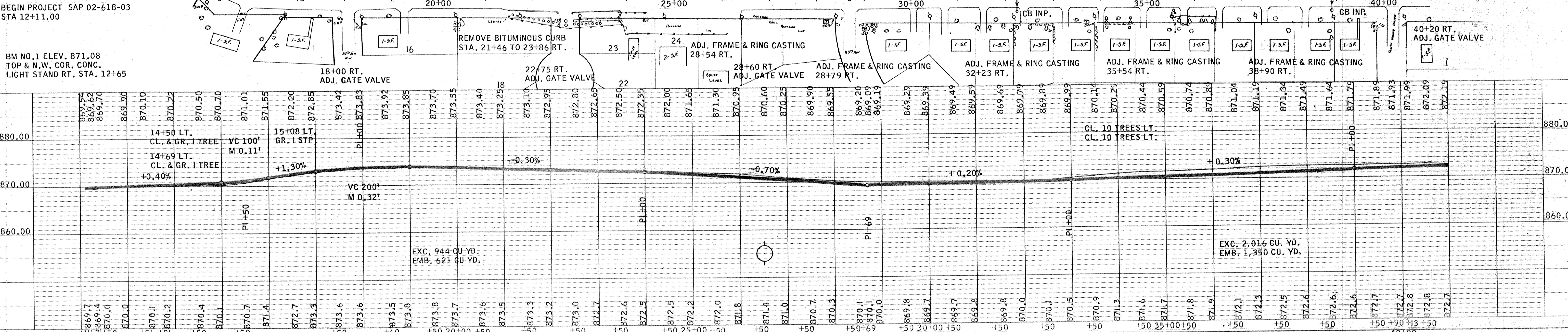
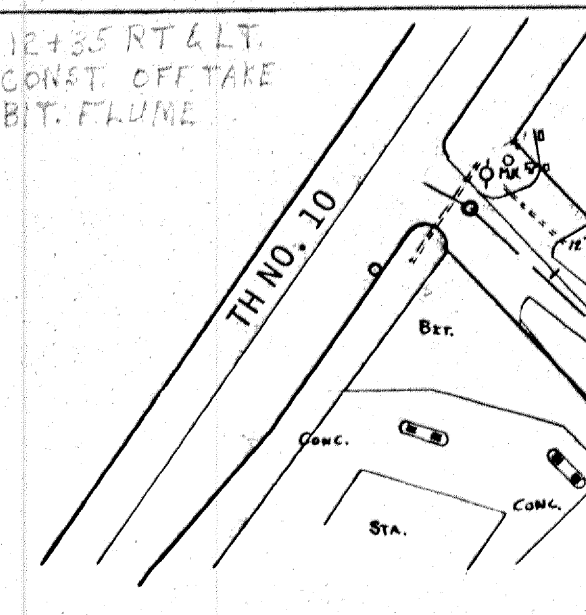
**BASIS OF PLANNED QUANTITIES**

2207 BITUMINOUS BASE: BITUMINOUS MATERIAL FOR MIX 0.5 GAL. PER S. Y. PER BITUMINOUS MATERIAL FOR FOG 0.10 GAL. PER S. Y.

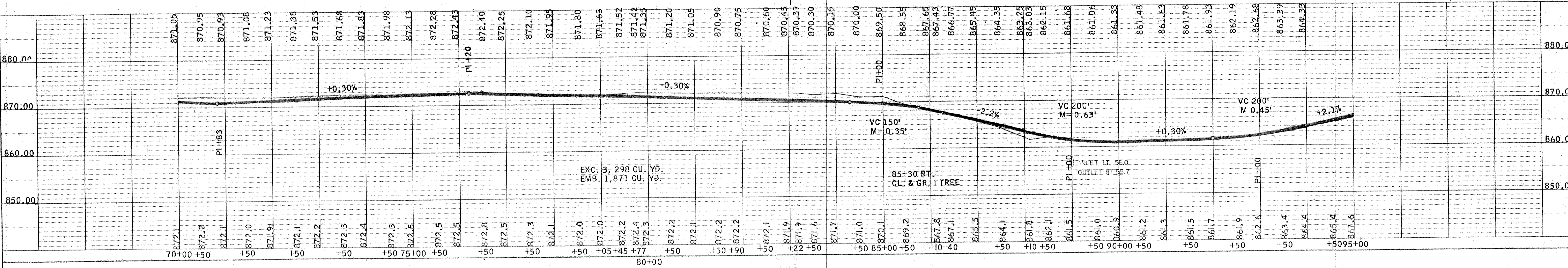
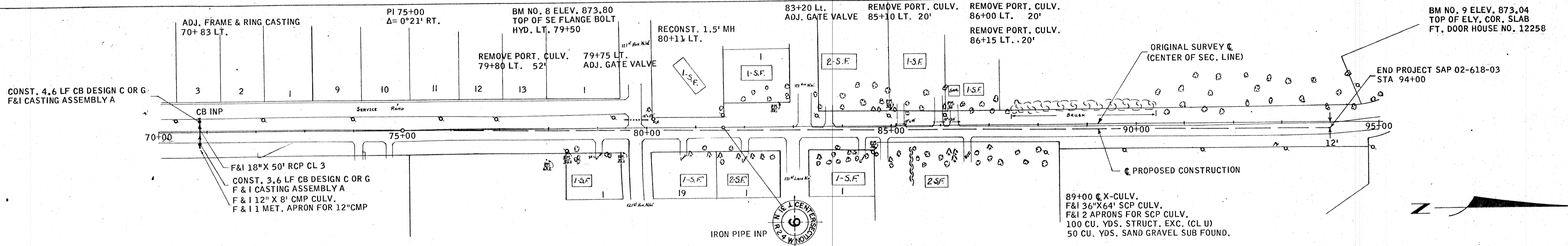
2331 PLANT MIXED BITUMINOUS WEARING COURSE BITUMINOUS MATERIAL FOR TACK 0.05 GAL. PER S. Y. BITUMINOUS MATERIAL FOR MIX 5.5 % OF MIXTURE BY WEIGHT BITUMINOUS MIXTURE -150 POUNDS PER SQ. YD.

CLASS A EXCAVATION COMPUTATION  
TOTAL AMOUNT OF CLASS A EXCAVATION 7,674 CU. YD.  
MINUS BITUMINOUS SURFACE INPLACE 2,118 CU. YD.  
PAY QUANTITY OF CLASS A EXCAVATION 5,556 CU. YD.

SALVAGE BITUMINOUS SURFACE COMPUTATION  
AVE. DEPTH 0.3' AVE WIDTH 23' LENGTH 8,288'  
BULKING FACTOR FOR VEHICULAR MEASURE 175%



STRUCTURE NOTATIONS CHECKED



CASTINGS

	GRATE	FRAME	CURB BOX
A	810	801	821B
B	NEENAH NO. 3246-C		

B.M. NOTED  
 STRUCTURE NOTATIONS CHWD  
 NO.