

STATE OF MINNESOTA
DEPARTMENT OF HIGHWAYS

CONSTRUCTION PLAN FOR STORM SEWER, GRADING, BASE & BITUMINOUS SURFACING

County State Aid Highway No. 2

Between TH 47 And T.H. 65

From A PT. 660' S. AND 1338' E. OF W. 1/4 COR. SEC. 35, TO A PT. 660' S. AND 50' W. OF E. 1/4 COR. SEC. 35

Give project reference to Survey, Section and Range

GROSS LENGTH 3.917 FEET 0.742 MILES
BRIDGES LENGTH _____ FEET _____ MILES
EXCEPTIONS LENGTH 0.0 FEET 0.0 MILES
NET LENGTH 3.917 FEET 0.742 MILES

INDEX OF SHEETS

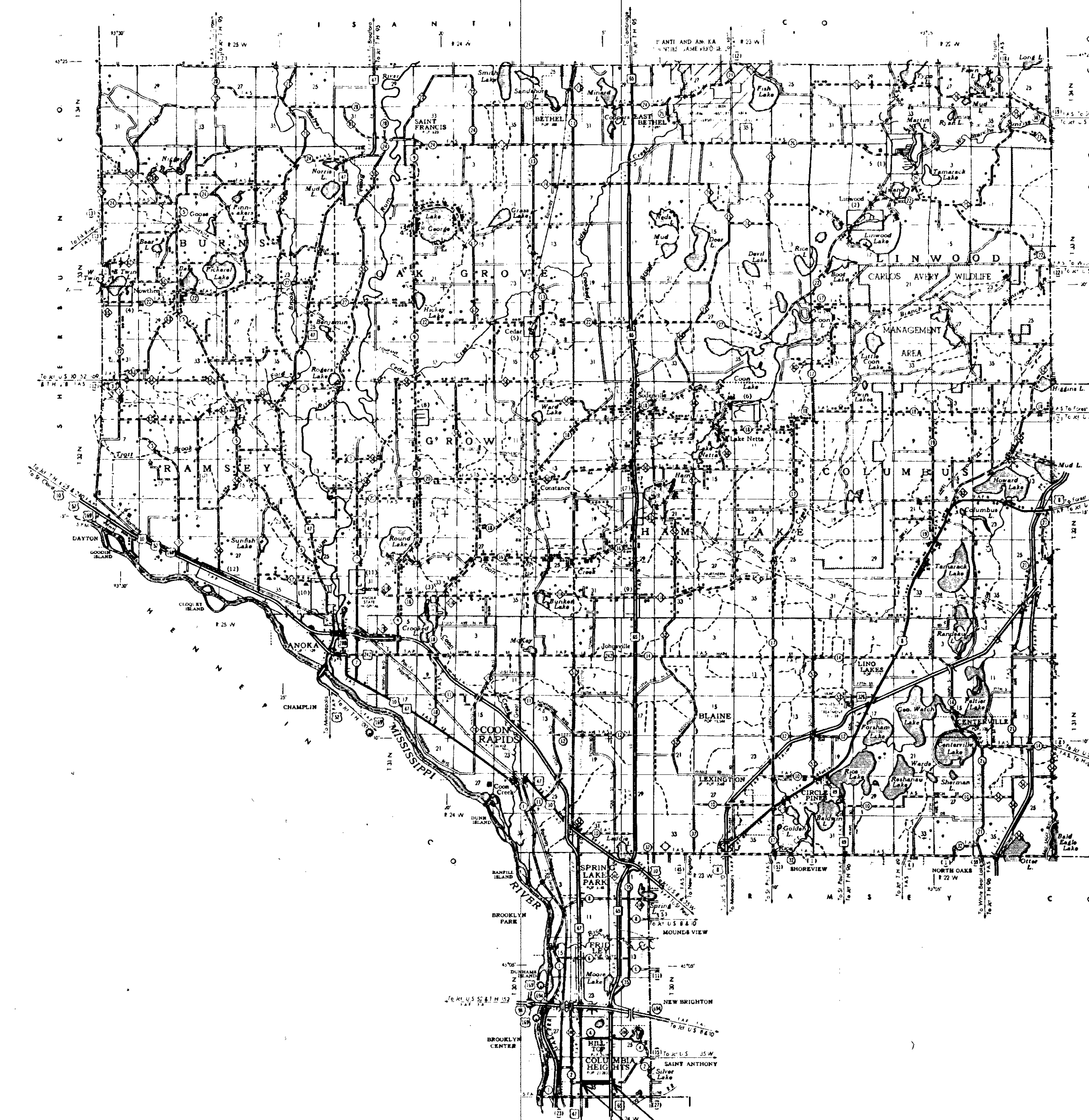
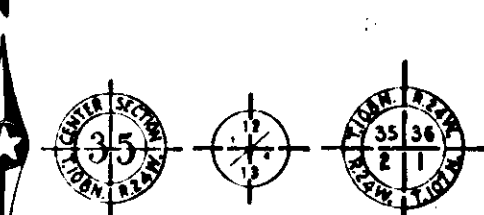
- Sheet No. 1 Title Sheet & Layout Map
- No. 2 Est. Quantities & Typical Sec.
- No. 3 To 5 Plan & Profile
- No. 6 To 9 Storm Sewer & Con.
- No. 10 To 16 Cross Sections

PLAN 1" = 50'

SCALE: PROFILE { HORIZ. 1" = 50'
 { VERT. 1" = 5'

CONVENTIONAL SIGNS

- STATE LINE
- COUNTY LINE
- TOWNSHIP OR RANGE LINE
- SECTION LINE
- QUARTER LINE
- SIXTEENTH LINE
- RIGHT OF WAY LINE
- PRESENT RIGHT OF WAY LINE
- CENTRAL OF ACCESS LINE
- PROPERTY LINE (CONV. LINE)
- VACATED PLATTED PROPERTY
- CORPORATE OR CITY LIMITS
- TOWN HIGHWAY CENTER LINE
- RETAINING WALL
- RAILROAD
- RAILROAD RIGHT OF WAY LINE
- RIVER OR CREEK
- DRY RUN
- DRAINAGE DITCH
- ELECTRIC POWER LINE
- TELEPHONE OR TELEGRAPH LINE
- JOINT TELEPHONE AND POWER
- CONDUIT
- TELEPHONE CABLE AERIAL
- TELEPHONE CABLE UNDERGROUND
- POWER CABLE UNDERGROUND
- GAS MAIN
- CONDUIT
- SEWER
- DROP INLET
- SEWER MANHOLE
- BARBED WIRE FENCE
- WOVEN WIRE FENCE
- CHAIN LINK FENCE
- RAILROAD SNOW FENCE
- STONE WALL OR FENCE
- MEADOW
- WATER PIPE
- SEWER PIPE
- DRAIN TILE
- SPRING
- MARSH
- TIMBER
- ORCHARD
- BRUSH
- NURSERY
- CATCH BASIN
- MANHOLE
- FIRE HYDRANT
- STREET LIGHT
- RAILROAD CROSSING SIGN
- RAILROAD CROSSING BELL
- ELECTRIC WARNING SIGN
- CROSSING GATE
- CATTLE GUARD
- OVERPASS (Highway Over)
- UNDERPASS (Highway Under)
- BRIDGE
- BUILDING (One Story Frame)
- F. FRAME C. CONCRETE
- S. STONE T. TILE
- B. BRICK ST. STUCCO
- IRON PIPE OR ROD
- MONUMENT (STONE, CONCRETE, OR METAL)
- WOODEN PILE
- GRAVEL PIT
- SAND PIT
- BURROW PIT
- ROCK QUARRY
- MEASURER CORNER



MINNEAPOLIS HENNEPIN COUNTY
END STA. 52+77
BEG. STA. 13+60
SAP. 02-602-04

DESIGN DESIGNATION

ADT (CURRENT YEAR) 8,874
ADT (FUTURE YEAR) 9,250
T (HEAVY COMMERCIAL)
9 Ton Design Soil Class A-6
Design Speed 40 MPH
Design Speed not achieved at:
STA. _____ TO STA. _____ MPH
STA. _____ TO STA. _____ MPH

SPECIFICATIONS

THE "STANDARD SPECIFICATIONS FOR HIGHWAY CONSTRUCTION", DATED JAN. 1, 1968, SHALL GOVERN

ALL APPLICABLE FEDERAL, STATE AND LOCAL LAWS AND ORDINANCES WILL BE COMPLIED WITH, IN THE CONSTRUCTION OF THIS PROJECT.

I HEREBY CERTIFY THAT THIS PLAN WAS PREPARED BY ME OR UNDER MY DIRECT SUPERVISION AND THAT I AM A DULY REGISTERED PROFESSIONAL ENGINEER UNDER THE LAWS OF THE STATE OF MINNESOTA.

E. J. Lundheim COUNTY ENGINEER DATE 7-28-69

ANOKA COUNTY REG. NO. 2551

RECOMMENDED FOR APPROVAL H. F. W. ... DISTRICT STATE AID ENGINEER 7-29-69

RECOMMENDED FOR APPROVAL C. E. W. ... 5-5-69

APPROVED 5/6 1969 Stanley M. Gay STATE AID ENGINEER

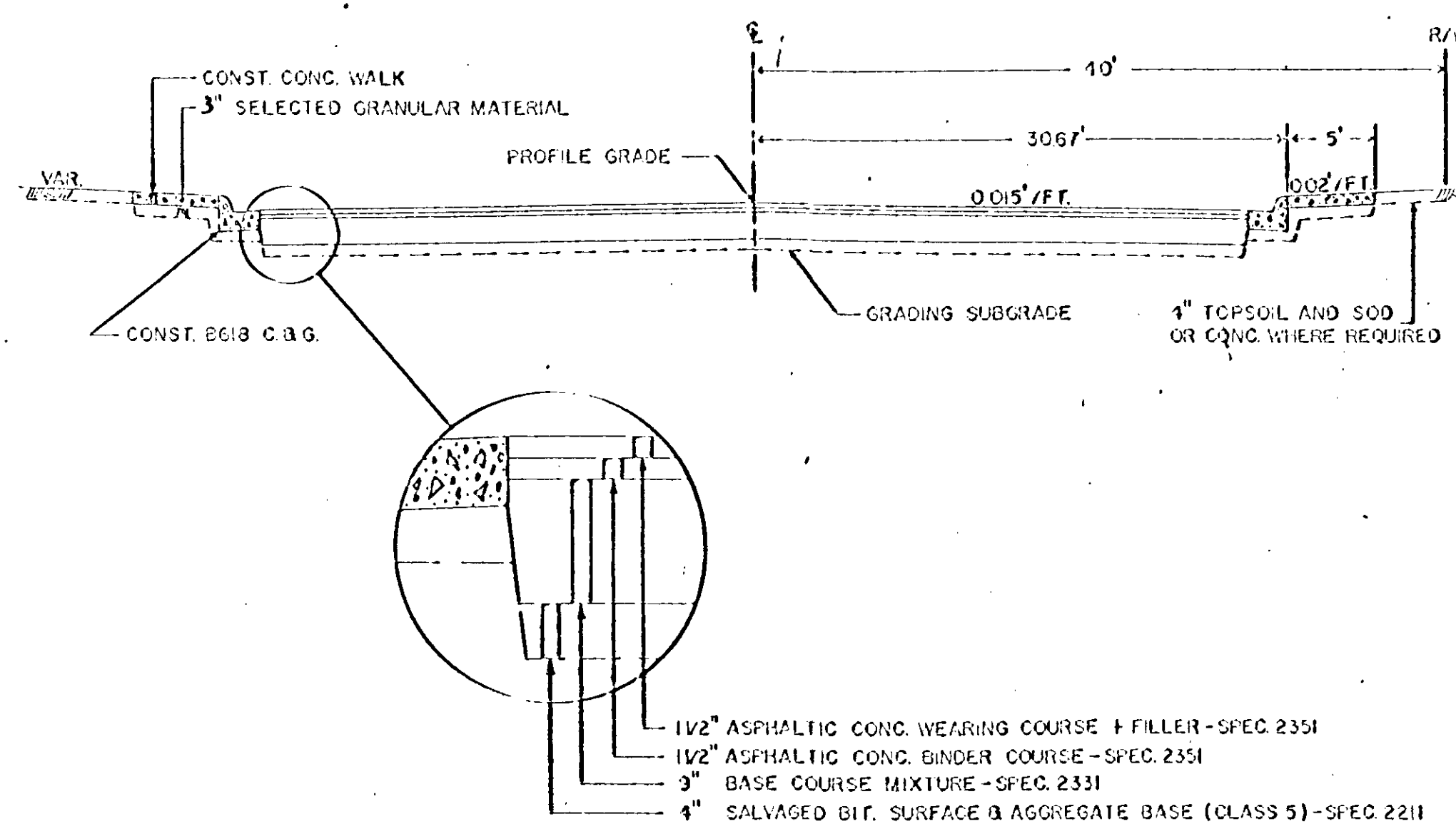
Minn. Proj. No. _____ County Proj. No. _____
State Proj. No. _____ S.A.P. 02-602-04

STATEMENT OF ESTIMATED QUANTITIES

| ITEM NO. | ITEM | UNIT | TOTAL ESTIMATED QUANTITIES |
|----------|---|--------------|----------------------------|
| 2031.503 | FIELD LABORATORY TYPE C | EACH | 1 |
| 2104.502 | REMOVE PAVEMENT | SQ. YD. | 665 |
| 2104.503 | REMOVE CURB & GUTTER | LIN. FT. | 7850 |
| 2104.506 | REMOVE SIDEWALK | SQ. FT. | 35000 |
| 2104.510 | REMOVE FENCE | LIN. FT. | 4 |
| 2104.511 | REMOVE MANHOLES & CATCH BASINS | STRUCTURE | 30 |
| 2104.515 | REMOVE PIPE SEWERS | LIN. FT. | 921 |
| 2104.520 | REMOVE PRESSURE PLATE | STRUCTURE | 1 |
| 2104.521 | REMOVE CONCRETE STEPS | STRUCTURE | 5 |
| 557.621 | RESET FENCE | LIN. FT. | 2 |
| 2105.501 | COMMON EXCAVATION | CU. YD. | 14101 |
| 2105.531 | SALVAGED BITUMINOUS MIXTURE | CU. YD. | 4600 |
| 2130.501 | WATER | M. GAL. | 50 |
| 2211.501 | AGGREGATE BASE, CLASS 5 | TON | 5820 |
| 2331.504 | BIT. MATERIAL FOR MIXTURE | TON | 435 |
| 2331.514 | BASE COURSE MIXTURE | TON | 12250 |
| 2331.518 | BITUMINOUS MIXTURE FOR DRIVEWAY REPLACEMENT | TON | 50 |
| 2351.501 | ASPHALT CEMENT | TON | 265 |
| 2351.509 | ASPHALTIC CONC. WEARING COURSE & FILLER | TON | 2365 |
| 2351.510 | ASPHALTIC CONC. BINDER COURSE | TON | 2365 |
| 2357.502 | BITUMINOUS MATERIAL FOR TACK COAT | GALLON | 5100 |
| 2358.501 | BITUMINOUS MATERIAL FOR PRIME COAT | GALLON | 8100 |
| 2503.502 | 12" REINFORCED CONC. SEWER CLASS 2 | LIN. FT. | 676 |
| 2503.502 | 15" REINFORCED CONC. SEWER CLASS 2 | LIN. FT. | 607 |
| 2503.502 | 18" REINFORCED CONC. SEWER CLASS 2 | LIN. FT. | 363 |
| 2503.502 | 21" REINFORCED CONC. SEWER CLASS 2 | LIN. FT. | 182 |
| 2503.502 | 24" REINFORCED CONC. SEWER CLASS 2 | LIN. FT. | 328 |
| 2503.502 | 27" REINFORCED CONC. SEWER CLASS 2 | LIN. FT. | 353 |
| 2503.502 | 22" SPAN REINFORCED CONC. PIPE ARCH CLASS 2 | LIN. FT. | 127 |
| 2503.502 | 28" SPAN REINFORCED CONC. PIPE ARCH CLASS 2 | LIN. FT. | 61 |
| 2506.506 | CONSTRUCT MANHOLES DESIGN A OR F | LIN. FT. | 261 |
| 2506.506 | CONSTRUCT MANHOLES DESIGN C OR G | LIN. FT. | 35.2 |
| 2506.507 | CONSTRUCT CATCH BASIN DESIGN 1 | LIN. FT. | 49.3 |
| 2506.507 | CONSTRUCT CATCH BASIN DESIGN 2 | LIN. FT. | 122.0 |
| 2506.511 | RECONSTRUCT MANHOLES | LIN. FT. | 12.0 |
| 2506.516 | CASTING ASSEMBLIES | ASSEMBLY | 50 |
| 2506.522 | ADJ. FRAME & RING CASTINGS | ASSEMBLY | 17 |
| 504.683 | ADJ. WATER GATE HOUSINGS | HOUSINGS | 18 |
| 2461.501 | CONCRETE MIX NO. 3A32 | CU. YD. | 2 |
| 2521.501 | 4" CONC. WALK | SQ. FT. | 36880 |
| 2521.501 | 6" CONC. WALK | SQ. FT. | 1020 |
| 2521.501 | 7" CONC. WALK | SQ. FT. | 1175 |
| 2521.501 | 8" CONC. WALK | SQ. FT. | 2570 |
| 2531.501 | CONCRETE CURB & GUTTER DESIGN B618 | LIN. FT. | 7725 |
| 2531.507 | 6" CONC. DRIVEWAY PAVEMENT | SQ. YD. | 100 |
| 2531.507 | 7" CONC. DRIVEWAY PAVEMENT | SQ. YD. | 120 |
| 2531.507 | 8" CONC. DRIVEWAY PAVEMENT | SQ. YD. | 165 |
| 2575.505 | SODDING | SQ. YD. | 1525 |
| 2575.551 | TOPSOIL | CU. YD. (VM) | 170 |
| 565.628 | LOOP DETECTOR | DETECTOR | 1 |
| 2545.521 | 3" RIGID METALLIC CONDUIT | LIN. FT. | 78 |
| 565.661 | REVISE SIGNAL SYSTEM | SYSTEM | 1 |
| 2545.501 | ELECTRIC LIGHTING SYSTEM ALTERNATE NO. 1 | SYSTEM | 1 |
| 2545.501 | ELECTRIC LIGHTING SYSTEM ALTERNATE NO. 2 | SYSTEM | 1 |
| 2545.501 | ELECTRIC LIGHTING SYSTEM ALTERNATE NO. 3 | SYSTEM | 1 |

1 FOR DESIGN NO. 1, SEE DETAIL NO. 1 PAGE 6
 2 FOR DESIGN NO. 2, SEE DETAIL NO. 2 PAGE 6
 3 FOR REPLACEMENT OF CONCRETE STEPS SEE DETAIL

TYPICAL SECTIONS



SAN. SEWER MANHOLES

| STATION | LOCATION | RECONSTRUCT LIN. FT. | REMOVE EACH | CONSTRUCT LIN. FT. |
|---------|----------|----------------------|-------------|--------------------|
| 19+93 | 5' LT. | 2 | | |
| 33+22 | 6' LT. | | 1 | 12.8' |
| 36+54 | 5' LT. | 2 | | |
| 39+86 | 5' LT. | 2 | | |
| 43+18 | 6' LT. | 2 | | |
| 46+51 | 5' LT. | 2 | | |
| 49+83 | 5' LT. | 2 | | |
| TOTALS | | 12' | 1 | 12.8' |

ADJ. FRAME & RING CASTINGS

| ITEM | STATION | LOCATION |
|------|---------|----------|
| M.H. | 14+03 | 4' LT. |
| M.H. | 16+59 | 6' LT. |
| M.H. | 19+93 | 5' LT. |
| M.H. | 20+41 | 5' LT. |
| M.H. | 23+34 | 5' LT. |
| M.H. | 23+89 | 14' RT. |
| M.H. | 24+33 | 14' RT. |
| M.H. | 26+58 | 5' LT. |
| M.H. | 29+90 | 5' LT. |
| M.H. | 30+04 | 15' RT. |
| M.H. | 33+22 | 6' LT. |
| M.H. | 36+54 | 5' RT. |
| M.H. | 39+86 | 5' LT. |
| M.H. | 41+71 | 5' LT. |
| M.H. | 43+18 | 6' LT. |
| M.H. | 46+51 | 5' LT. |
| M.H. | 49+83 | 5' LT. |
| M.H. | 52+67 | 21' RT. |
| M.H. | 52+78 | 25' RT. |

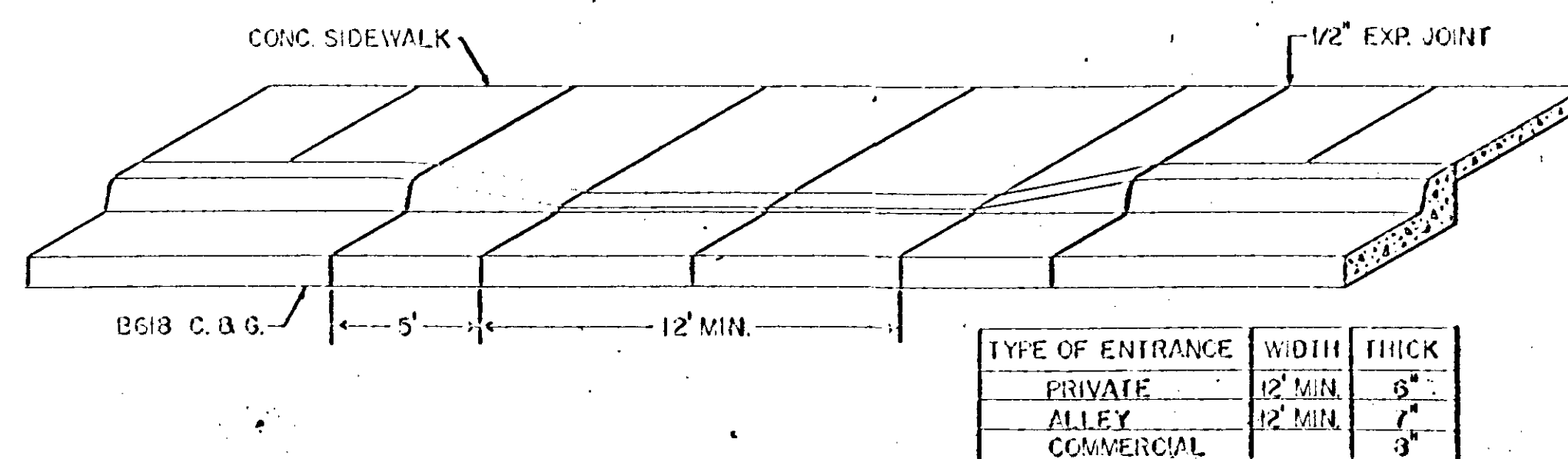
REMOVE STEEL STREET LIGHT STANDARDS

| NO. | STATION | LOCATION |
|-----|---------|----------|
| 1 | 13+76 | 29' RT. |
| 2 | 15+20 | 29' RT. |
| 3 | 16+01 | 29' LT. |
| 4 | 16+82 | 29' RT. |
| 5 | 17+51 | 29' LT. |
| 6 | 18+20 | 29' RT. |
| 7 | 19+12 | 29' LT. |
| 8 | 20+00 | 30' RT. |
| 9 | 20+88 | 29' LT. |
| 10 | 22+03 | 29' RT. |
| 11 | 22+24 | 29' LT. |
| 12 | 46+89 | 29' RT. |
| 13 | 47+81 | 29' LT. |
| 14 | 48+68 | 30' RT. |
| 15 | 49+52 | 29' LT. |
| 16 | 50+21 | 30' RT. |
| 17 | 51+11 | 29' LT. |
| 18 | 51+86 | 29' RT. |
| 19 | 52+60 | 29' LT. |

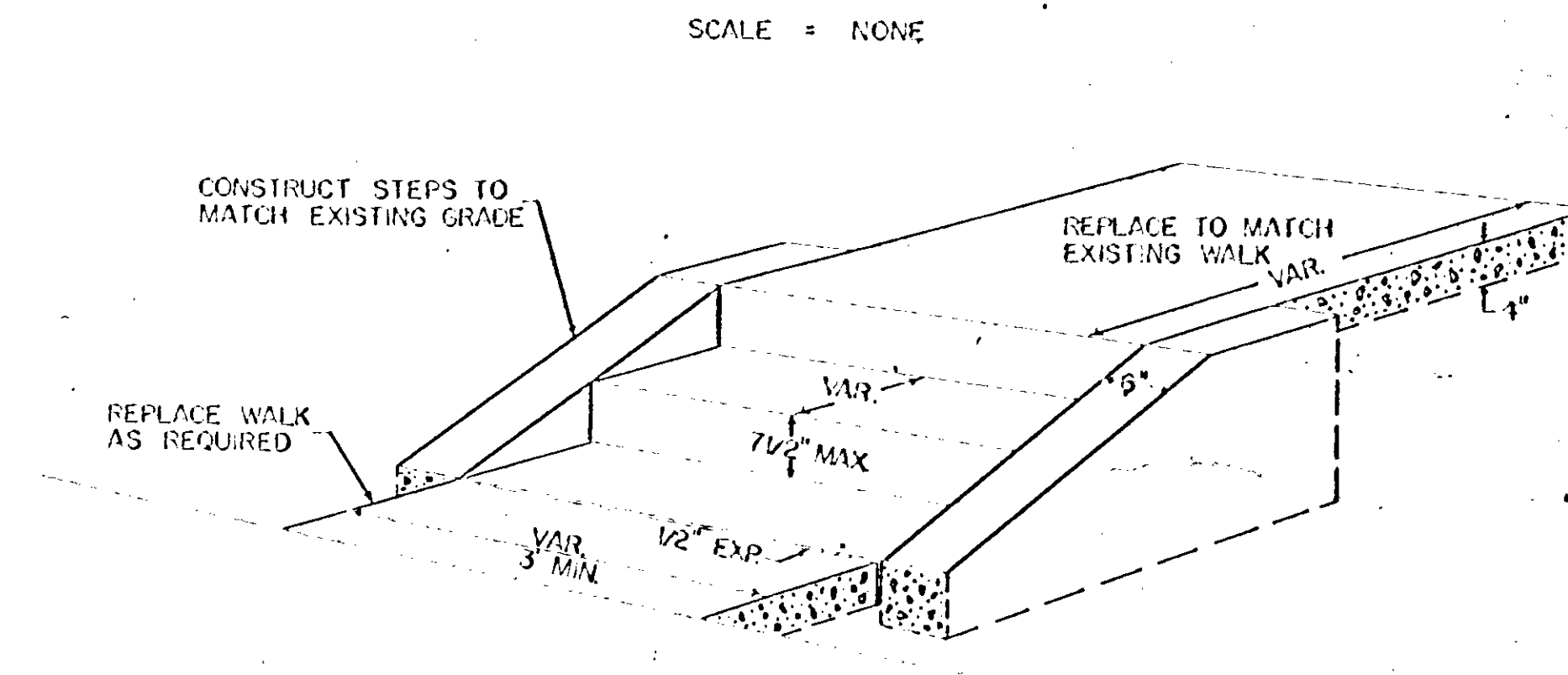
ADJ. WATER GATE HOUSINGS

| STATION | LOCATION |
|---------|----------|
| 13+95 | 13' RT. |
| 16+29 | 13' RT. |
| 19+83 | 13' RT. |
| 20+12 | 12' RT. |
| 23+15 | 10' RT. |
| 29+67 | 13' RT. |
| 29+79 | 35' LT. |
| 33+10 | 12' LT. |
| 36+45 | 10' RT. |
| 36+45 | 12' LT. |
| 39+75 | 44' LT. |
| 42+88 | 14' RT. |
| 43+09 | 11' LT. |
| 43+09 | 11' RT. |
| 43+09 | 38' RT. |
| 46+42 | 27' RT. |
| 46+42 | 42' LT. |
| 49+92 | 42' LT. |

CONC. WALK & CURB AT ENTRANCES



CONCRETE STEP DETAIL



REMOVE CONCRETE STEPS

| NO. | STATION | LOCATION |
|-----|---------|----------|
| 1 | 28+52 | 34' LT. |
| 2 | 30+72 | 34' LT. |
| 3 | 31+78 | 34' LT. |
| 4 | 38+00 | 34' LT. |
| 5 | 38+45 | 34' LT. |

TOTAL 5 STRUCTURES

CONSTRUCT CONCRETE STEPS AT LOCATIONS WHERE SIDEWALK CONSTRUCTION REQUIRED THE REMOVAL OF ORIGINAL STEPS. THE BASIC DESIGN AS SHOWN WILL BE BUILT TO CONFORM WITH THE EXISTING CONDITIONS AT EACH LOCATION.

FORM 21166-10-58

The following Standard Detail plates, approved by the Bureau of Public Roads, shall apply on this project.


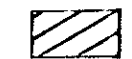
STANDARD DETAIL PLATES

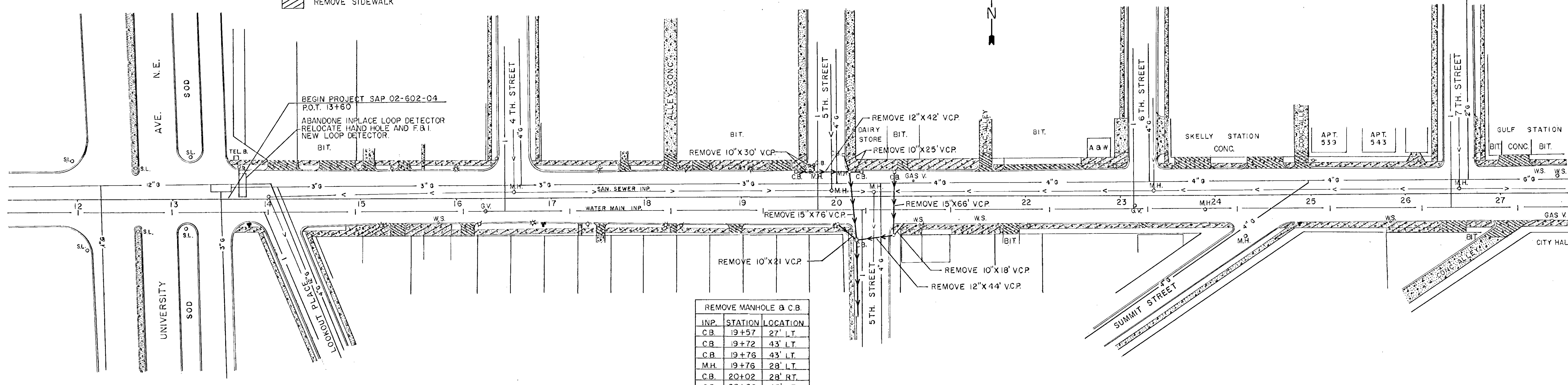
| PLATE NO. | DESCRIPTION |
|-----------|--------------------------------------|
| 3000 F | REINFORCED CONCRETE PIPE |
| 3006 A | GASKET JOINT FOR RC PIPE |
| 3014 D | REINFORCED CONCRETE PIPE ARCH |
| 4000 G | MANHOLE OR CATCH BASIN |
| 4002 D | MANHOLE OR CATCH BASIN |
| 4005 H | MANHOLE OR CATCH BASIN |
| 4006 F | MANHOLE OR CATCH BASIN |
| 4101 B | RING CASTING FOR MANHOLE |
| 4110 D | COVER CASTING FOR MANHOLE |
| 4180 F | MANHOLE STEP CASTING |
| 7100 D | CONCRETE CURB & GUTTER (DESIGN B) |
| 7111 D | INSTALLATION OF CATCH BASIN CASTINGS |
| 8000 C | STANDARD BARRICADES |
| 8008 C | CONTRACTORS SIGN |
| 8112 A | PEDESTAL FOUNDATION |
| 8117 A | PRECAST HAND HOLE |

BASIS OF PLANNED QUANTITIES

- 2211 AGGREGATE BASE, CLASS 5 145 LBS. PER CU. FT. COMPACTED
- 2331 PLANT MIXED BITUMINOUS BASE COURSE
 BASE COURSE MIXTURE 100 LBS. PER SQ. YD. PER INCH THICKNESS
 BITUMINOUS MATERIAL FOR MIXTURE 3.5% BY WEIGHT
- 2351 PLANT MIXED BITUMINOUS BINDER COURSE
 BITUMINOUS MIXTURE 175 LBS. PER SQ. YD.
 BITUMINOUS MATERIAL FOR MIXTURE 5.0% BY WEIGHT
- 2351 PLANT MIXED BITUMINOUS WEARING COURSE
 BITUMINOUS MIXTURE 175 LBS. PER SQ. YD.
 BITUMINOUS MATERIAL FOR MIXTURE 6.2% BY WEIGHT
- 2357 BITUMINOUS MATERIAL FOR TACK COAT 0.05 GAL. PER SQ. YD.
- 2358 BITUMINOUS MATERIAL FOR PRIME COAT 0.30 GAL. PER SQ. YD.

40th AVE
EXISTING TOPOGRAPHY
& PROPOSED GRADING

-  REMOVE 6"-8" CONC. PAVEMENT
-  REMOVE SIDEWALK

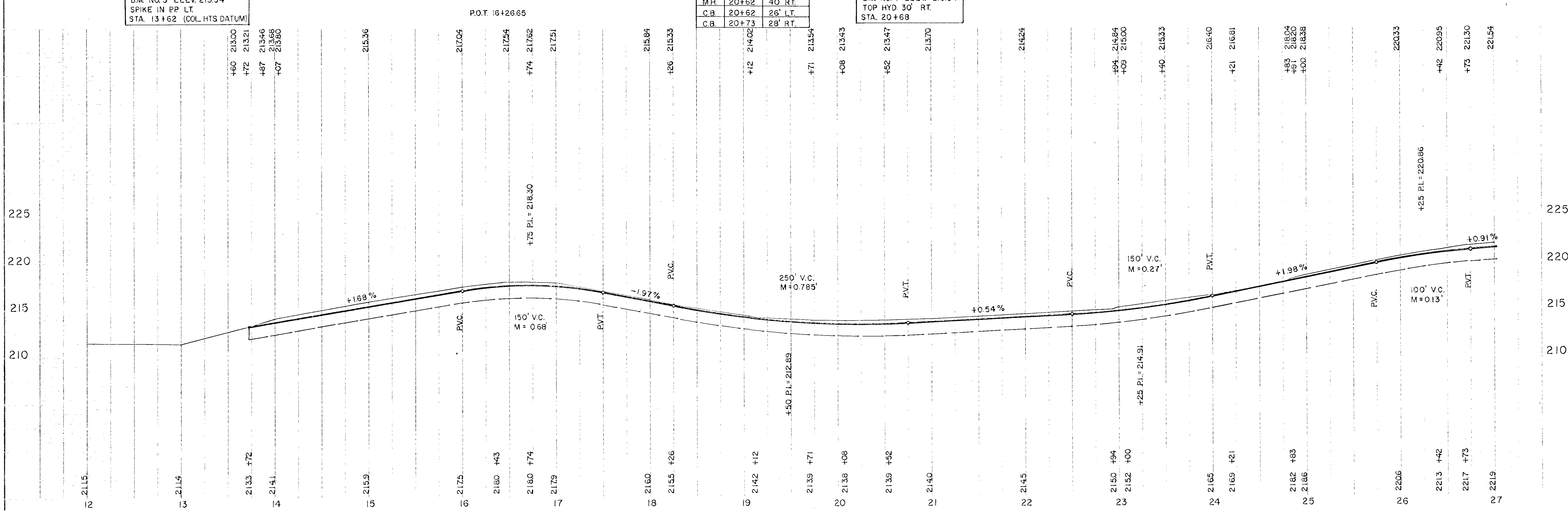


REMOVE MANHOLE & C.B.


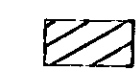
| INP. | STATION | LOCATION |
|------|---------|----------|
| CB | 19+57 | 27' LT. |
| CB | 19+72 | 43' LT. |
| CB | 19+76 | 43' LT. |
| M.H. | 19+76 | 28' LT. |
| CB | 20+02 | 28' RT. |
| CB | 20+08 | 45' LT. |
| M.H. | 20+14 | 31' LT. |
| CB | 20+27 | 27' LT. |
| M.H. | 20+62 | 40' RT. |
| CB | 20+62 | 26' LT. |
| CB | 20+73 | 28' RT. |

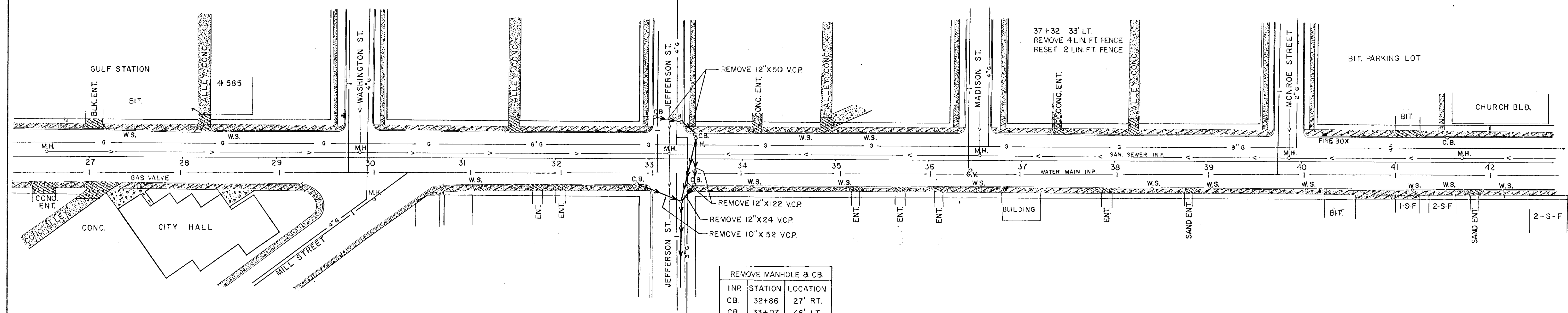
BM NO. 3 ELEV 21354
SPIKE IN PP LT.
STA. 13+62 (COL. HTS DATUM)

BM NO. 4 ELEV 21654
TOP HYD 30' RT.
STA. 20+68



40th AVE
EXISTING TOPOGRAPHY
& PROPOSED GRADING

-  REMOVE 6"-8" CONC. PAVEMENT
-  REMOVE SIDEWALK

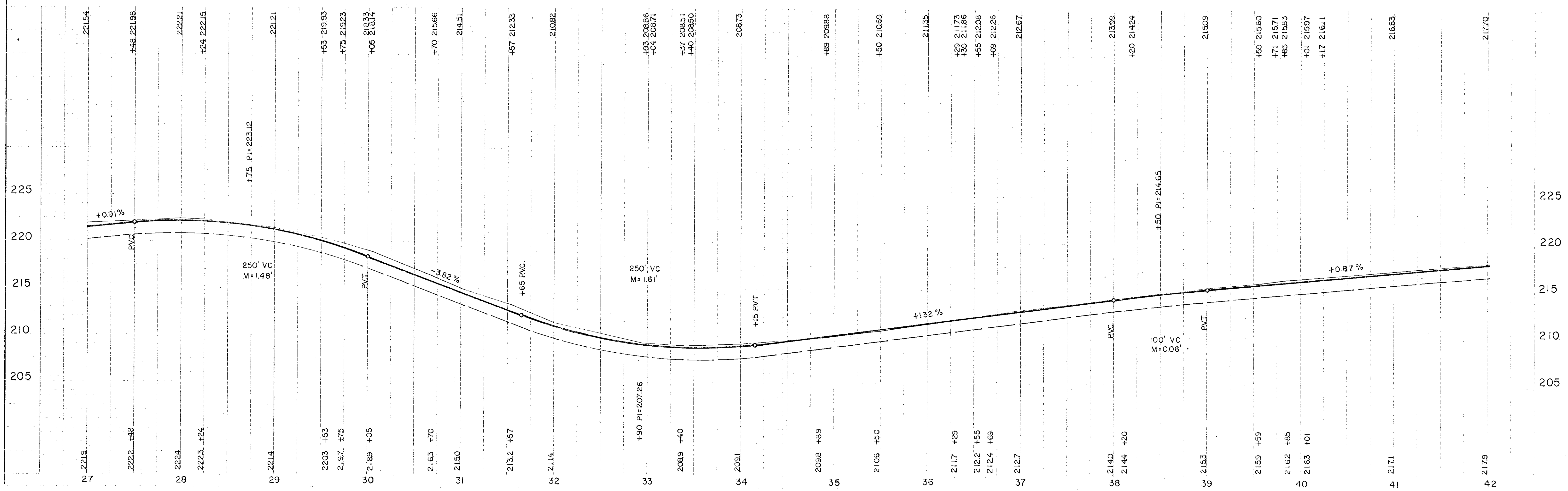


| INP. | STATION | LOCATION |
|------|---------|----------|
| CB. | 32+86 | 27' RT. |
| CB. | 33+07 | 46' LT. |
| CB. | 33+36 | 41' LT. |
| CB. | 33+48 | 28' RT. |
| MH. | 33+51 | 23' LT. |
| CB. | 33+51 | 27' LT. |



B.M. NO. 5 ELEV. 21200
TOP HYD. 30' RT.
STA. 32+92

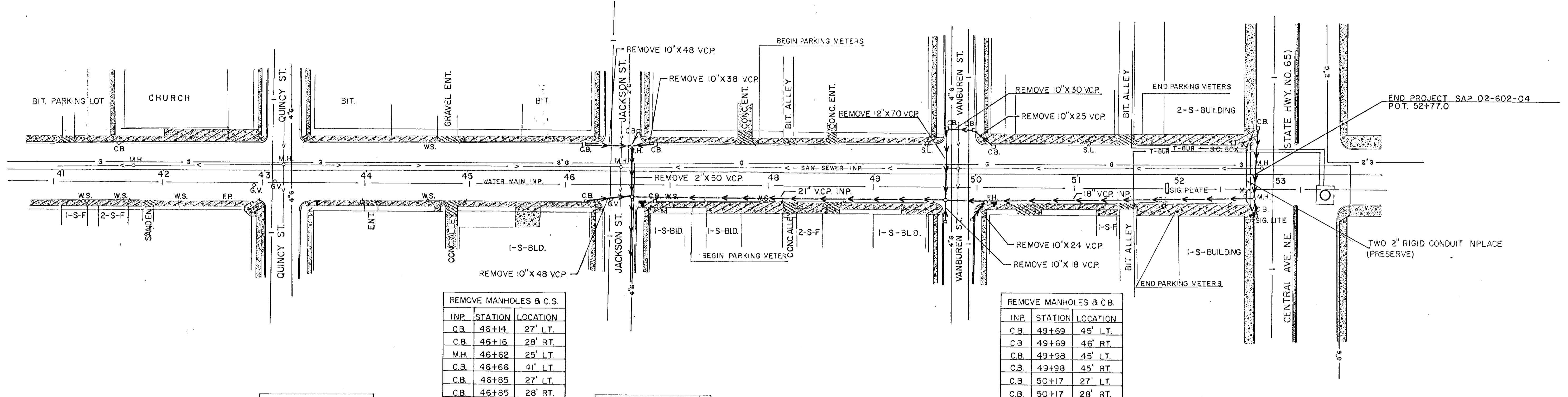
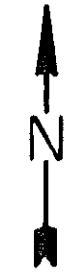
B.M. NO. 6 ELEV. 21480
TOP HYD. 30' RT.
STA. 36+85

P.O.T. 29+53.04



40th AVE
EXISTING TOPOGRAPHY
& PROPOSED GRADING

-  REMOVE 6"-8" CONC. PAVEMENT
-  REMOVE SIDEWALK



REMOVE MANHOLES & C.S.

| INP. | STATION | LOCATION |
|------|---------|----------|
| C.B. | 46+14 | 27' LT. |
| C.B. | 46+16 | 28' RT. |
| M.H. | 46+62 | 25' LT. |
| C.B. | 46+66 | 41' LT. |
| C.B. | 46+85 | 27' LT. |
| C.B. | 46+85 | 28' RT. |

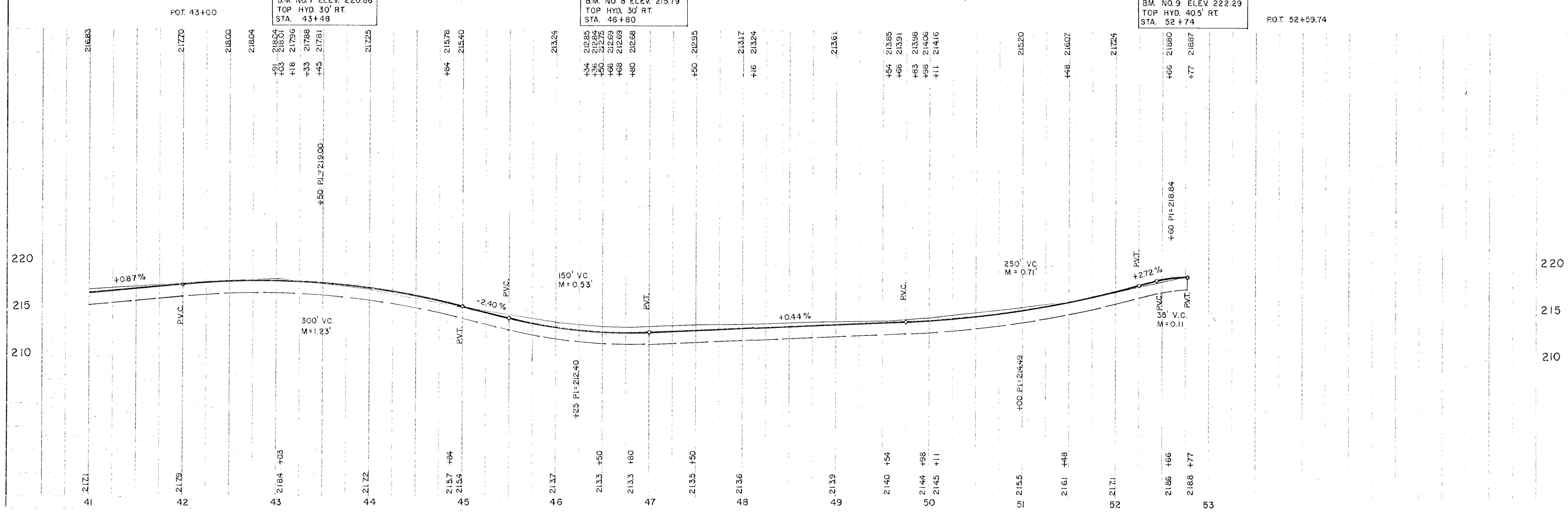
REMOVE MANHOLES & C.B.

| INP. | STATION | LOCATION |
|------|---------|----------|
| C.B. | 49+69 | 45' LT. |
| C.B. | 49+69 | 46' RT. |
| C.B. | 49+98 | 45' LT. |
| C.B. | 49+98 | 45' RT. |
| C.B. | 50+17 | 27' LT. |
| C.B. | 50+17 | 28' RT. |

B.M. NO. 7 ELEV. 220.86
TOP HYD. 30' RT.
STA. 43+48

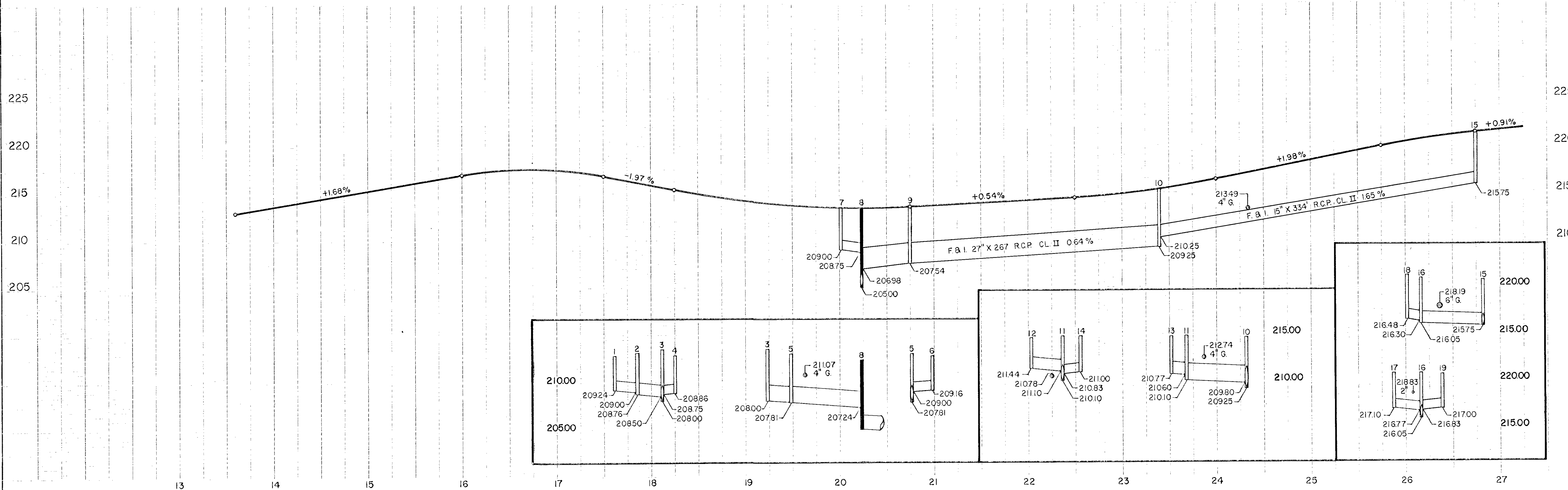
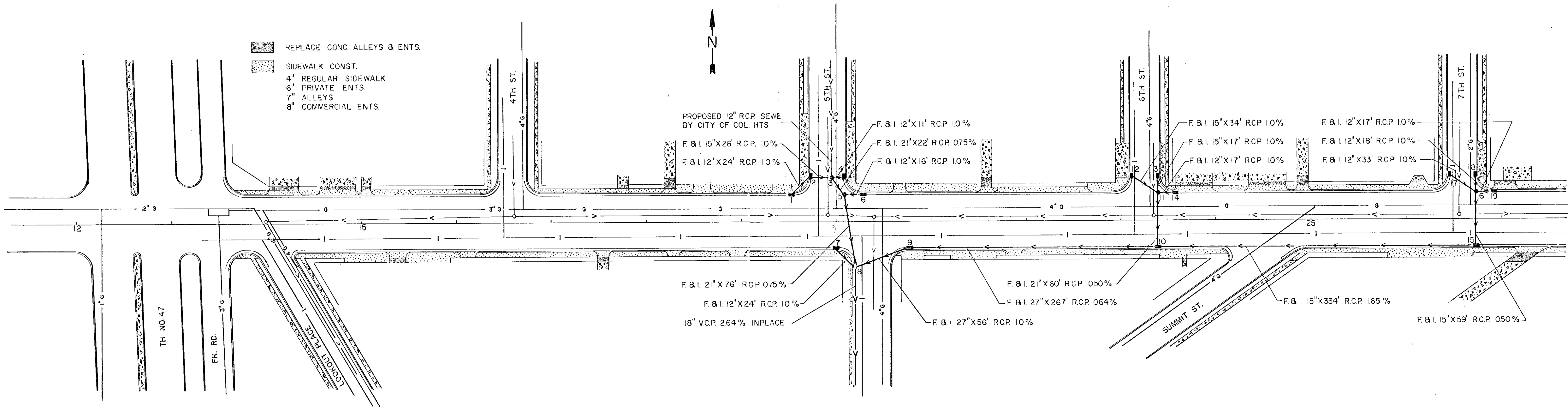
B.M. NO. 8 ELEV. 215.79
TOP HYD. 30' RT.
STA. 46+80

B.M. NO. 9 ELEV. 222.29
TOP HYD. 40.5' RT.
STA. 52+74

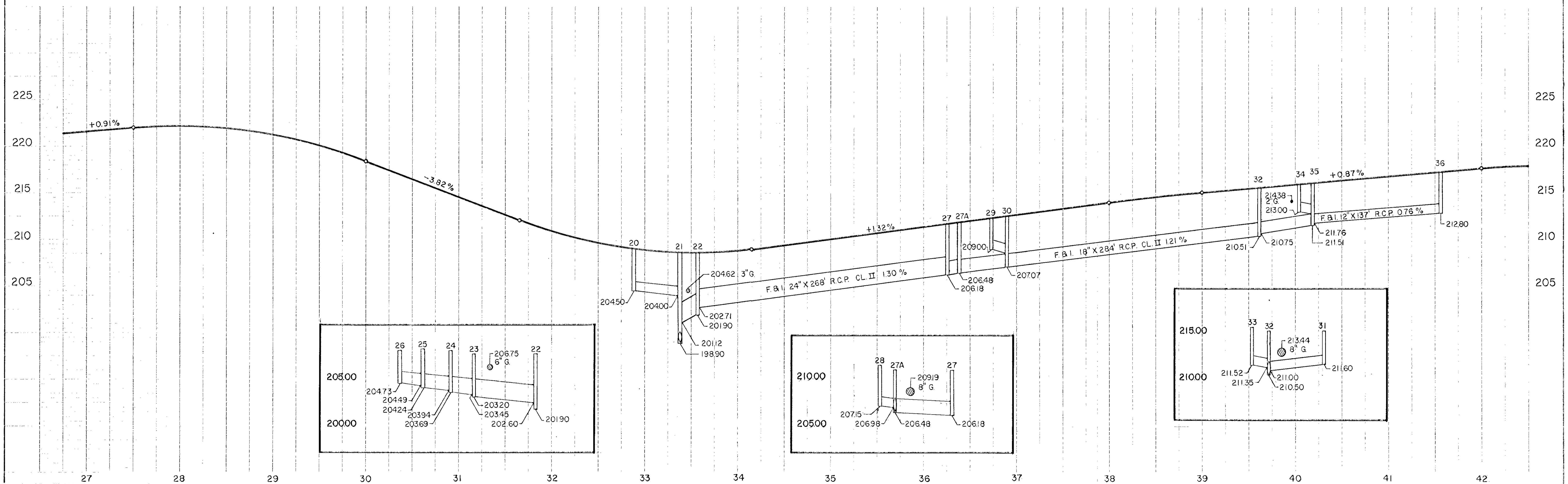
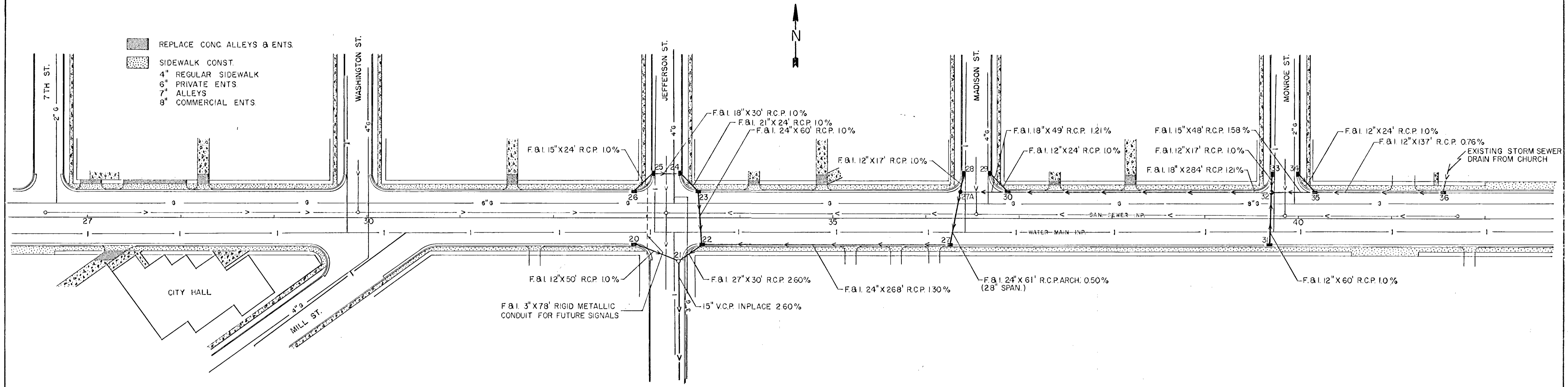


STORM SEWER & CONCRETE CONST.

- REPLACE CONC. ALLEYS & ENTS.
- SIDEWALK CONST.
- 4" REGULAR SIDEWALK
- 6" PRIVATE ENTS.
- 7" ALLEYS
- 8" COMMERCIAL ENTS.



STORM SEWER & CONCRETE CONST.



NOTES:
 1. ALL CONCRETE SHALL BE 4000 P.S.I. STRENGTH.
 2. ALL PIPE SHALL BE 150 P.S.I. STRENGTH.
 3. ALL JOINTS SHALL BE GASKETED.
 4. ALL MANHOLES SHALL BE 48" DIA. CONCRETE.
 5. ALL ALLEYS SHALL BE 7" WIDE.
 6. ALL SIDEWALKS SHALL BE 4" THICK.
 7. ALL PRIVATE ENTS SHALL BE 6" WIDE.
 8. ALL COMMERCIAL ENTS SHALL BE 8" WIDE.
 9. ALL ENTS SHALL BE 4" DEEP.
 10. ALL ALLEYS SHALL BE 4" DEEP.
 11. ALL SIDEWALKS SHALL BE 4" DEEP.
 12. ALL PRIVATE ENTS SHALL BE 4" DEEP.
 13. ALL COMMERCIAL ENTS SHALL BE 4" DEEP.
 14. ALL JOINTS SHALL BE GASKETED.
 15. ALL MANHOLES SHALL BE 48" DIA. CONCRETE.
 16. ALL ALLEYS SHALL BE 7" WIDE.
 17. ALL SIDEWALKS SHALL BE 4" THICK.
 18. ALL PRIVATE ENTS SHALL BE 6" WIDE.
 19. ALL COMMERCIAL ENTS SHALL BE 8" WIDE.
 20. ALL ENTS SHALL BE 4" DEEP.
 21. ALL ALLEYS SHALL BE 4" DEEP.
 22. ALL SIDEWALKS SHALL BE 4" DEEP.
 23. ALL PRIVATE ENTS SHALL BE 4" DEEP.
 24. ALL COMMERCIAL ENTS SHALL BE 4" DEEP.

NOTES:
 1. ALL CONCRETE SHALL BE 4000 P.S.I. STRENGTH.
 2. ALL PIPE SHALL BE 150 P.S.I. STRENGTH.
 3. ALL JOINTS SHALL BE GASKETED.
 4. ALL MANHOLES SHALL BE 48" DIA. CONCRETE.
 5. ALL ALLEYS SHALL BE 7" WIDE.
 6. ALL SIDEWALKS SHALL BE 4" THICK.
 7. ALL PRIVATE ENTS SHALL BE 6" WIDE.
 8. ALL COMMERCIAL ENTS SHALL BE 8" WIDE.
 9. ALL ENTS SHALL BE 4" DEEP.
 10. ALL ALLEYS SHALL BE 4" DEEP.
 11. ALL SIDEWALKS SHALL BE 4" DEEP.
 12. ALL PRIVATE ENTS SHALL BE 4" DEEP.
 13. ALL COMMERCIAL ENTS SHALL BE 4" DEEP.
 14. ALL JOINTS SHALL BE GASKETED.
 15. ALL MANHOLES SHALL BE 48" DIA. CONCRETE.
 16. ALL ALLEYS SHALL BE 7" WIDE.
 17. ALL SIDEWALKS SHALL BE 4" THICK.
 18. ALL PRIVATE ENTS SHALL BE 6" WIDE.
 19. ALL COMMERCIAL ENTS SHALL BE 8" WIDE.
 20. ALL ENTS SHALL BE 4" DEEP.
 21. ALL ALLEYS SHALL BE 4" DEEP.
 22. ALL SIDEWALKS SHALL BE 4" DEEP.
 23. ALL PRIVATE ENTS SHALL BE 4" DEEP.
 24. ALL COMMERCIAL ENTS SHALL BE 4" DEEP.

STORM SEWER & CONCRETE CONST.

