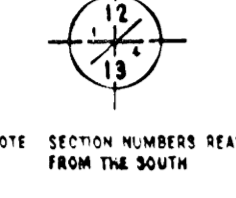


**CONVENTIONAL SIGNS**

STATE LINE	.....	TIMBER	.....
COUNTY LINE	.....	BRUSH	.....
TOWNSHIP OR RANGE LINE	.....	ORCHARD	.....
SECTION LINE	.....	ROCK LEDGE	.....
QUARTER LINE	.....	SAND	.....
SIXTEENTH LINE	.....	EDGE OF CUT	.....
RIGHT-OF-WAY LINE	.....	TOE OF EMBANKMENT	.....
PRESENT ROAD PAV. LINE	.....	CATCH BASIN	.....
LIMITED ACCESS	.....	MANHOLE	.....
PROPERTY LINE (EXCEPT LOW-WATER)	.....	TROOP NIET	.....
VACATED PLATED PROPERTY	.....	FIRE HYDRANT	.....
COORDINATE OR CITY LIMITS	.....	ARC LAMP	.....
TRUNK-HIGHWAY CENTER LINE	.....	OTHER LAMP (HIGH 4-1/2)	.....
RETAINING WALL	.....	RAILROAD CROSSING SIGN	.....
STEAM RAILROAD	.....	RAILROAD CROSSING SIGN	.....
ELECTRIC RAILROAD	.....	RAILROAD CROSSING SIGN	.....
RAILROAD RIGHT-OF-WAY LINE	.....	RAILROAD CROSSING SIGN	.....
CREEK	.....	RAILROAD CROSSING SIGN	.....
RAPIDS OR WATERFALL	.....	RAILROAD CROSSING SIGN	.....
DRY RUN	.....	RAILROAD CROSSING SIGN	.....
DRAINAGE DITCH	.....	RAILROAD CROSSING SIGN	.....
HIGH TENSION LINE	.....	RAILROAD CROSSING SIGN	.....
POWER POLE LINE	.....	RAILROAD CROSSING SIGN	.....
TELEPHONE OR TELEGRAPH LINE	.....	RAILROAD CROSSING SIGN	.....
TELEPHONE CONDUIT	.....	RAILROAD CROSSING SIGN	.....
GUARD RAIL	.....	RAILROAD CROSSING SIGN	.....
WIRE FENCE	.....	RAILROAD CROSSING SIGN	.....
RAILROAD SNOW FENCE	.....	RAILROAD CROSSING SIGN	.....
STONE WALL OR FENCE	.....	RAILROAD CROSSING SIGN	.....
WATER PIPE	.....	RAILROAD CROSSING SIGN	.....
SEWER PIPE	.....	RAILROAD CROSSING SIGN	.....
DRAIN TILE	.....	RAILROAD CROSSING SIGN	.....
GRAVEL PIT	.....	RAILROAD CROSSING SIGN	.....
SAND PIT	.....	RAILROAD CROSSING SIGN	.....
CLAY PIT	.....	RAILROAD CROSSING SIGN	.....
ROCK QUARRY	.....	RAILROAD CROSSING SIGN	.....
SPRINGS	.....	RAILROAD CROSSING SIGN	.....
MARSH	.....	RAILROAD CROSSING SIGN	.....



NOTE SECTION NUMBERS READ FROM THE SOUTH

STATE OF MINNESOTA  
DEPARTMENT OF HIGHWAYS

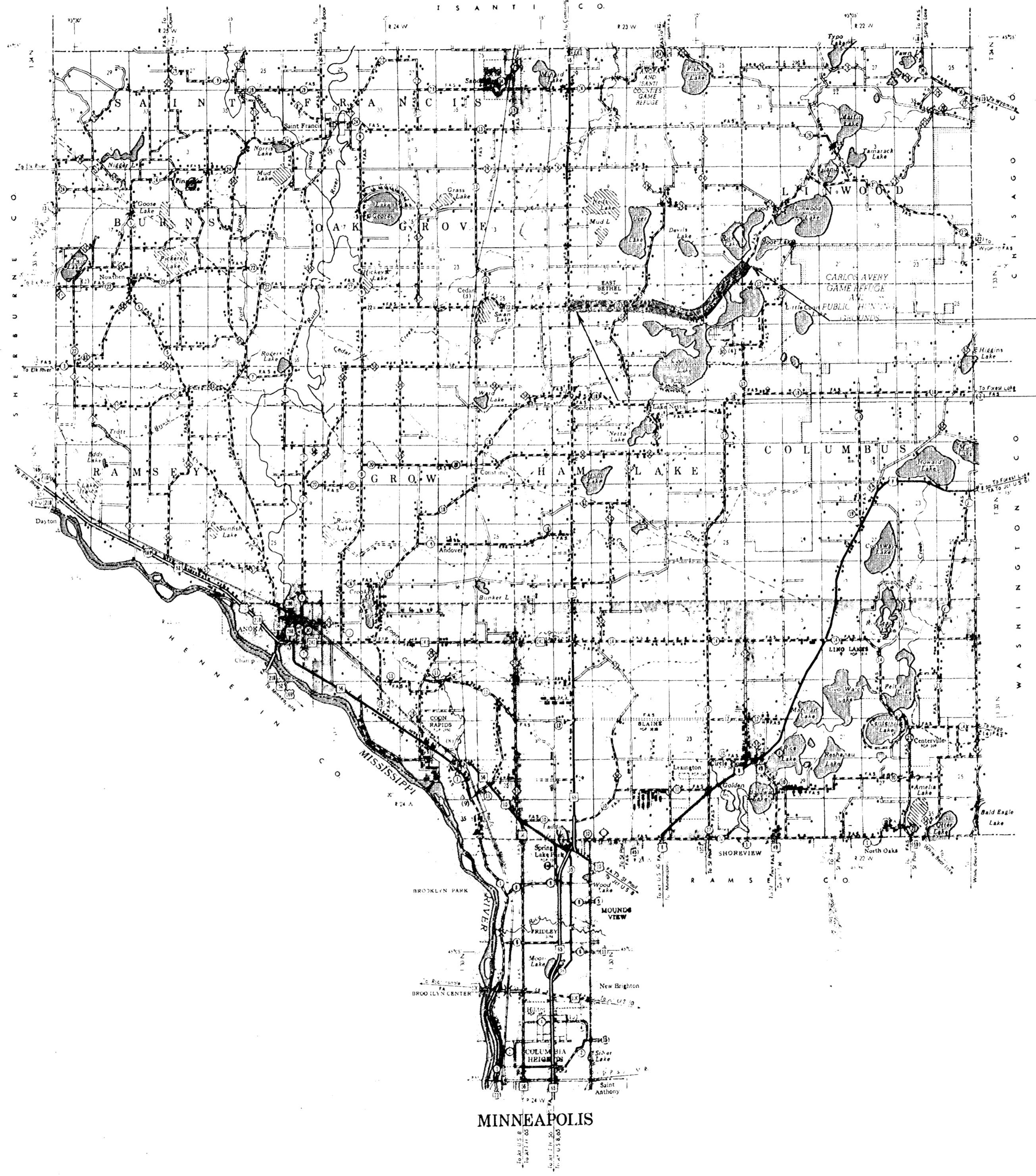
CONSTRUCTION PLAN FOR GRADING

County State Aid Highway No. 22

BETWEEN T.H. NO. 65 23755 EAST OF CENTER OF SECTION 29 AND 1/2 MILE NE OF JCT WITH CSAH 17  
From TWP. 33N. RANGE 23W. To TWP. 33N. RANGE 22W.  
Give proper reference to Section, Township and Range

GROSS LENGTH	28244	FEET	5.349	MILES
BRIDGES LENGTH	0	FEET	0	MILES
EXCEPTIONS LENGTH	0	FEET	0	MILES
NET LENGTH	28244	FEET	5.349	MILES

SCALES  
Plan 1 inch = 200 Feet  
PROFILE. Horiz. 1 inch = 200 Feet. Vert. 1 inch = 20 Feet  
WORKING PLANS  
Horiz. 1 inch = 100 Feet  
Vert. 1 inch = 10 Feet  
Cross Section 1 inch = 10 FEET  
LAYOUT  
Scale 1 inch = 100 Feet



END S.P. 02-622-05 S-6372(6)  
STA. 433+44

BEGIN S.P. 02-622-05 S-6372(6)  
STA. 151+00

MINN. PROJ. S-6372(6)

INDEX OF SHEETS  
Sheet No. 1 Title Sheet & Layout Map  
" No. 2 Est. Quantities & Typical Sec.  
" No. 3 To 8 Plan & Profile  
" No. 9 To 37 Cross Sections

DESIGN SPEED 55 M.P.H.  
PROJECTED TRAFFIC 813 ADT.

ALL APPLICABLE FEDERAL, STATE AND LOCAL LAWS AND ORDINANCES WILL BE COMPLIED WITH, IN THE CONSTRUCTION OF THIS PROJECT.

I HEREBY CERTIFY THAT THIS PLAN WAS PREPARED BY ME OR UNDER MY DIRECT SUPERVISION AND THAT I AM A DULY REGISTERED PROFESSIONAL ENGINEER UNDER THE LAWS OF THE STATE OF MINNESOTA.

*Carlton J. Lundheim* COUNTY ENGINEER DATE Jun 3, 1964  
ANOKA COUNTY REG. NO. 2851

RECOMMENDED FOR APPROVAL *[Signature]* 1964 DISTRICT ENGINEER

RECOMMENDED FOR APPROVAL *[Signature]* 7-23, 1964

APPROVED *[Signature]* 19-2-64 STATE AID ENGINEER

DEPARTMENT OF COMMERCE  
BUREAU OF PUBLIC ROADS  
DISTRICT ENGINEER \_\_\_\_\_ DATE \_\_\_\_\_

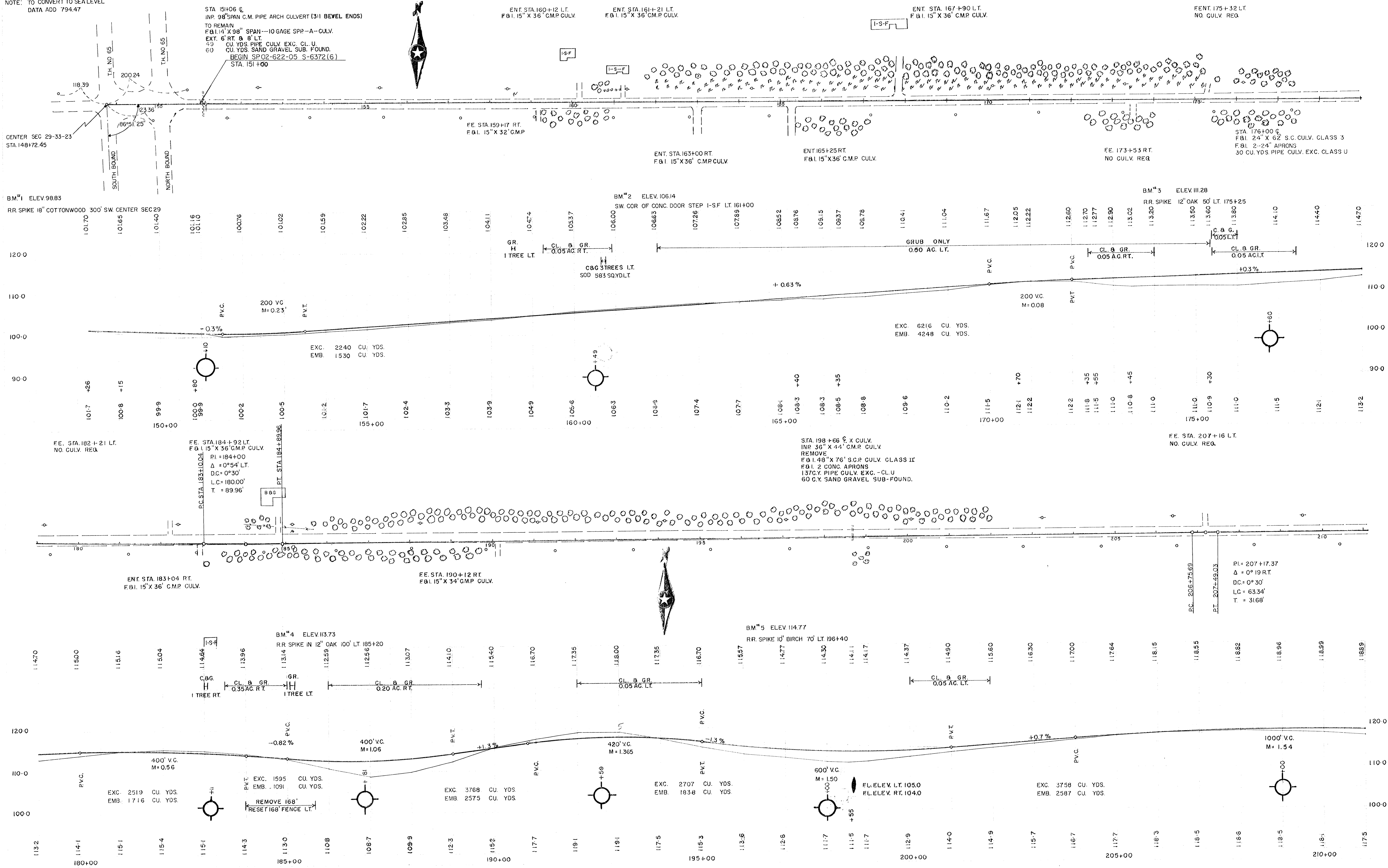
S.A.P. \_\_\_\_\_  
Minn. Project No. S-6372(6) State Project No. 02-622-05

— SPECIFICATIONS —

THE "SPECIFICATIONS FOR HIGHWAY CONSTRUCTION" DATED JAN 1, 1964 SHALL GOVERN



NOTE: TO CONVERT TO SEA LEVEL  
DATA ADD 794.47



FE. STA. 215+40 LT.  
F&I 15" X 34" C.M.P. CULV.

FE. STA. 217+28 LT.  
F&I 15" X 34" C.M.P. CULV.

FE. STA. 220+04 LT.  
F&I 15" X 32" C.M.P. CULV.

STA. 225+00 C.X-CULV.  
F&I 36" X 44" S.C.P. CULV. CLASS III  
F&I 2 CONC. APRONS  
56 CY. PIPE CULV. EXC.-CLU  
27 CY. SAND GRAVEL SUB-FOUND

FE. STA. 234+76 LT.  
INP 12" X 26" C.M.P.  
REMOVE  
F&I 15" X 36" S.C.P. CULV.

CO. RD. 235+75 LT.  
F&I 15" X 56" C.M.P. CULV.

FE. STA. 235+75 RT.  
F&I 15" X 34" C.M.P. CULV.

FE. STA. 239+00 RT.  
F&I 15" X 36" C.M.P. CULV.

FE. STA. 242+29 RT.  
F&I 15" X 36" C.M.P. CULV.

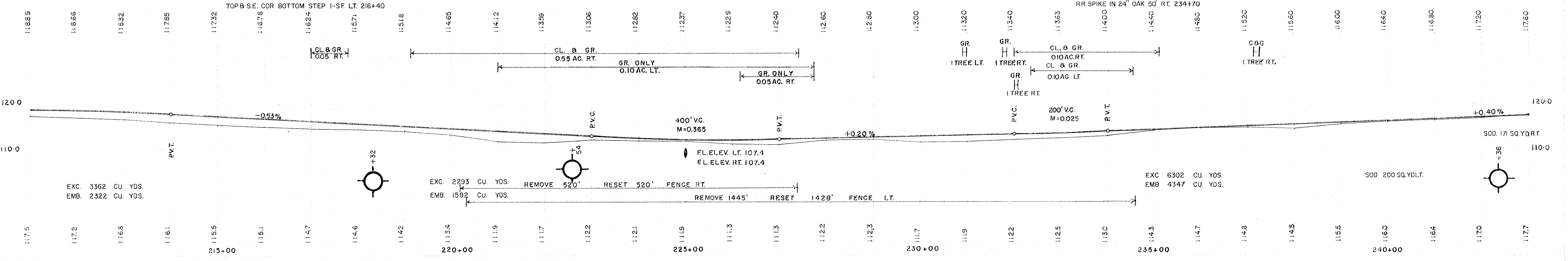
CO. RD. 228+91 RT.  
F&I 15" X 46" C.M.P. CULV.

BM. #6 ELEV. 114.72

TOP & S.E. COR BOTTOM STEP 1-SF LT. 216+40

BM. #7 ELEV. 115.18

RR SPIKE IN 24" OAK 50' RT. 234+70



EXC. 3362 CU. YDS.  
EMB. 2322 CU. YDS.

EXC. 2293 CU. YDS.  
EMB. 1582 CU. YDS.

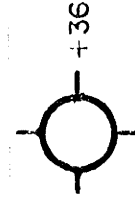
REMOVE 520' FENCE RT.  
RESET 520' FENCE RT.

REMOVE 1445' FENCE LT.  
RESET 1428' FENCE LT.

EXC. 6302 CU. YDS.  
EMB. 4347 CU. YDS.

SOD. 171 SQ. YD. RT.

SOD. 200 SQ. YD. LT.

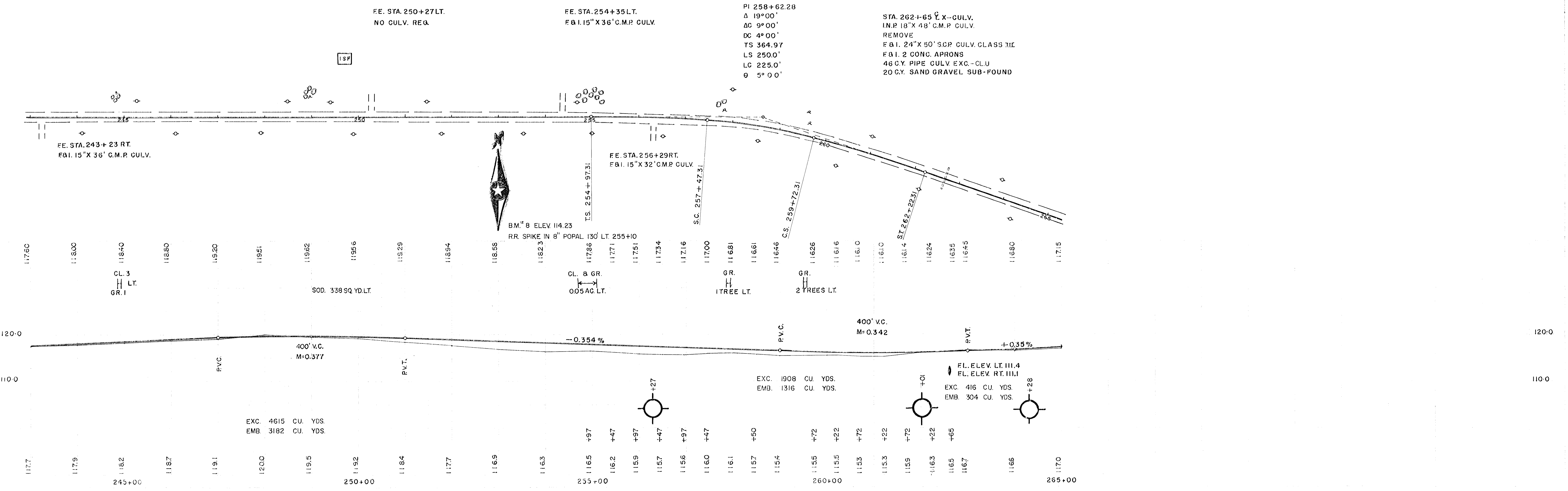


FE. STA. 250+27 LT.  
NO CULV. REQ.

FE. STA. 254+35 LT.  
F&I 15" X 36" C.M.P. CULV.

PI 258+62.28  
Δ 19° 00'  
AC 9° 00'  
DC 4° 00'  
TS 364.97  
LS 250.0'  
LC 225.0'  
θ 5° 00'

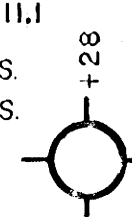
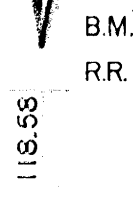
STA. 262+65 C.X-CULV.  
INP 18" X 48" C.M.P. CULV.  
REMOVE  
F&I 24" X 50" S.C.P. CULV. CLASS III  
F&I 2 CONC. APRONS  
46 CY. PIPE CULV. EXC.-CLU  
20 CY. SAND GRAVEL SUB-FOUND



EXC. 4615 CU. YDS.  
EMB. 3182 CU. YDS.

EXC. 1908 CU. YDS.  
EMB. 1316 CU. YDS.

EXC. 416 CU. YDS.  
EMB. 304 CU. YDS.



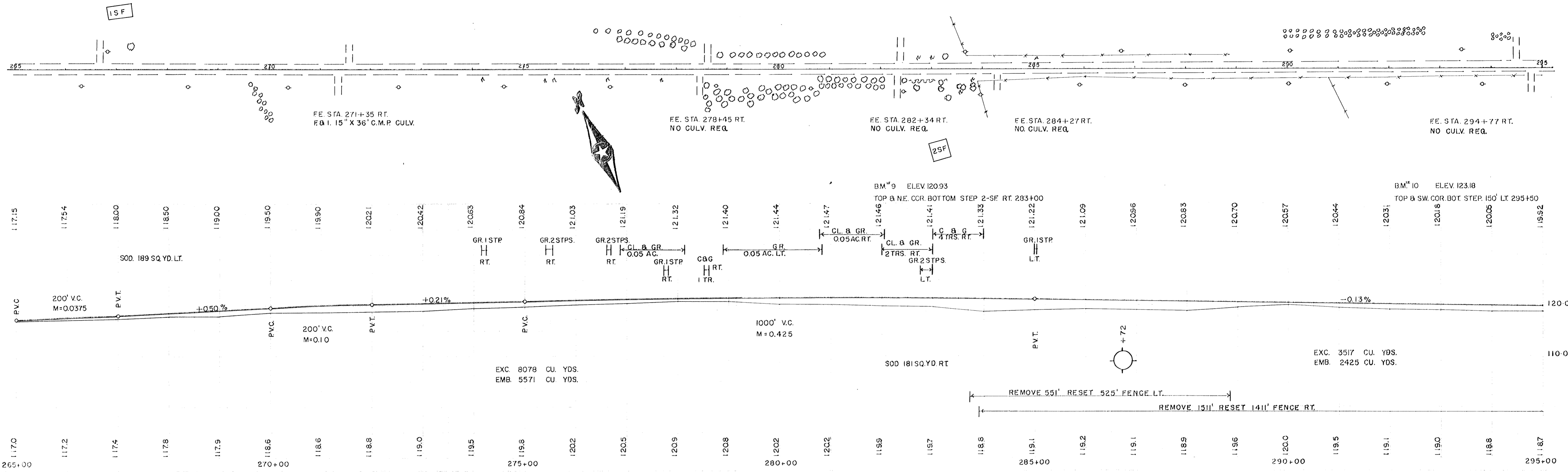
FE STA. 266+66 LT.  
F&I 15" X 36" C.M.P. CULV.

FE STA. 271+57 LT.  
F&I 15" X 36" C.M.P. CULV.

FE STA. 278+62 LT.  
NO CULV. REQ.

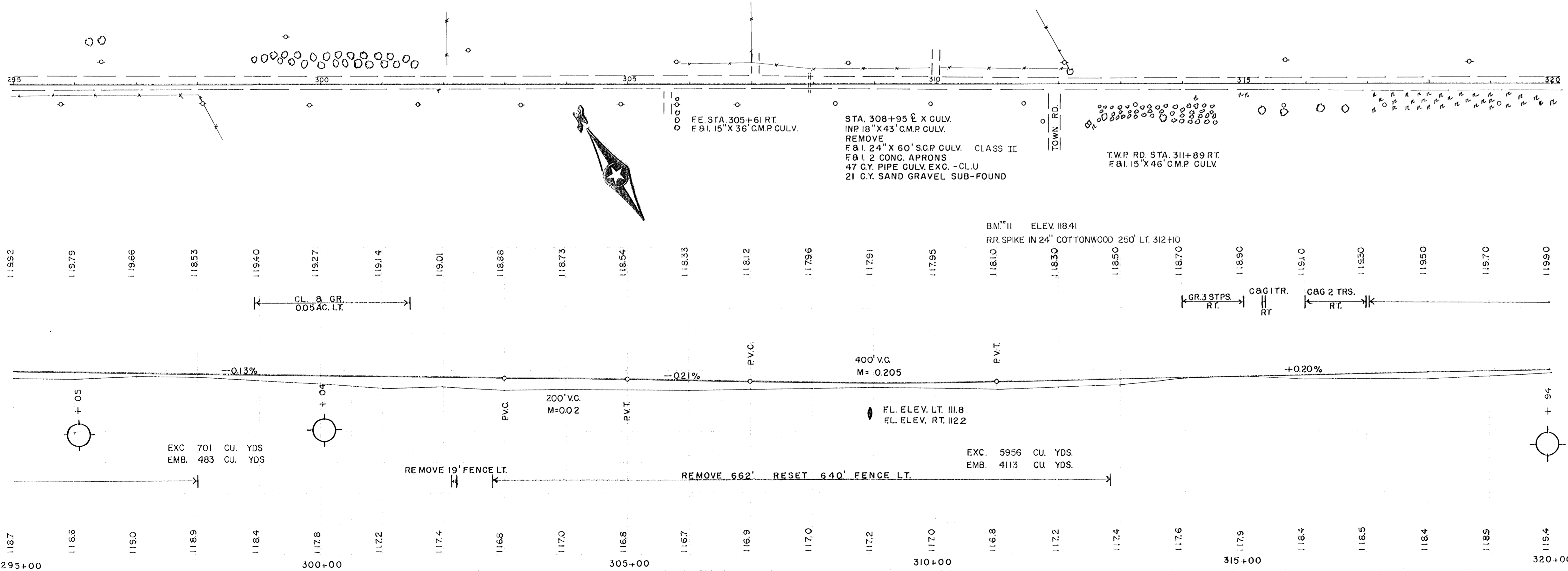
FE STA. 282+37 LT.  
NO CULV. REQ.

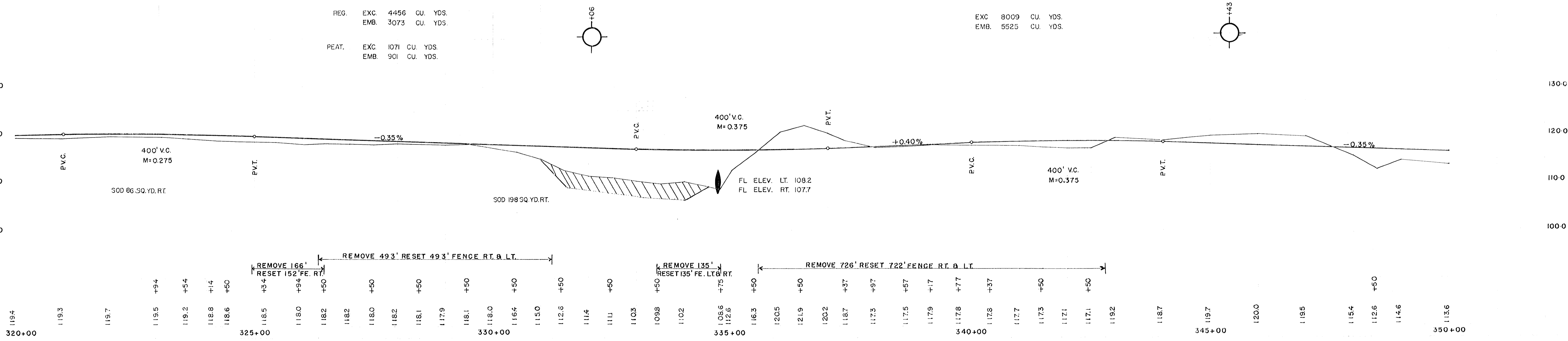
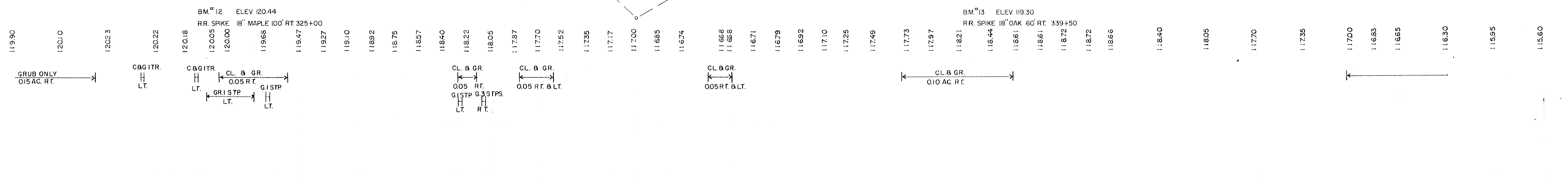
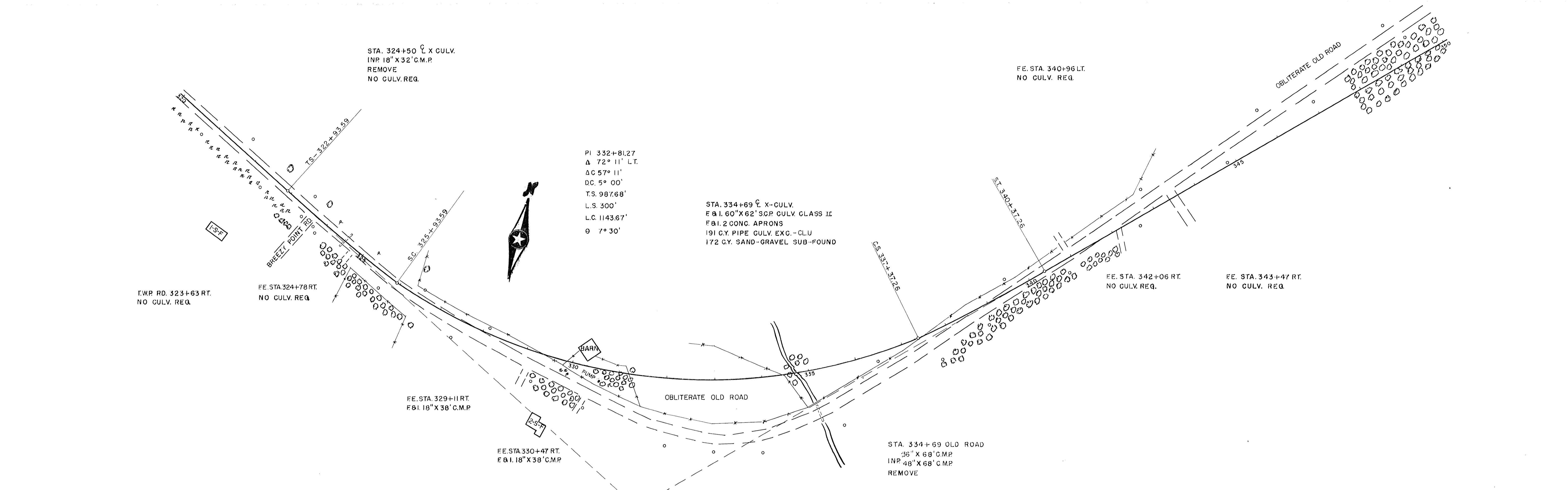
FE STA. 294+49 LT.  
NO CULV. REQ.



FE STA. 307+06 LT.  
F&I 15" X 34" C.M.P. CULV.

FE STA. 309+99 LT.  
F&I 15" X 32" C.M.P. CULV.

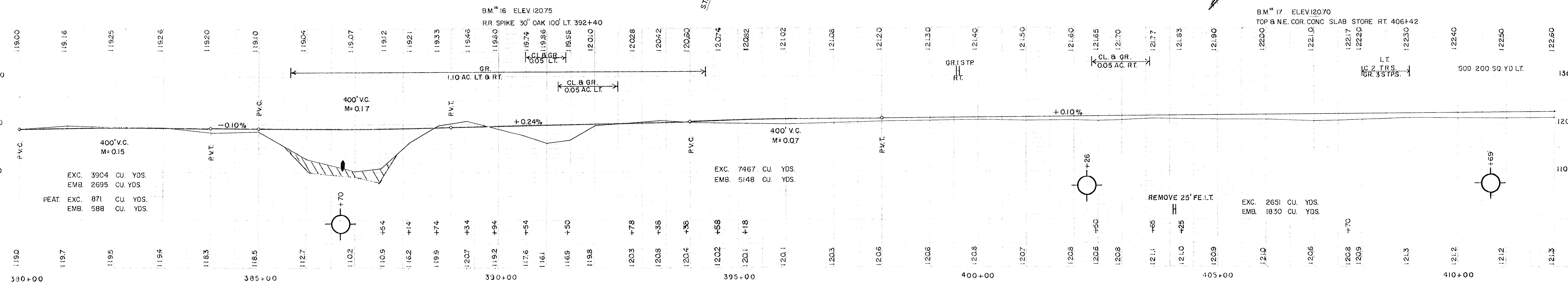
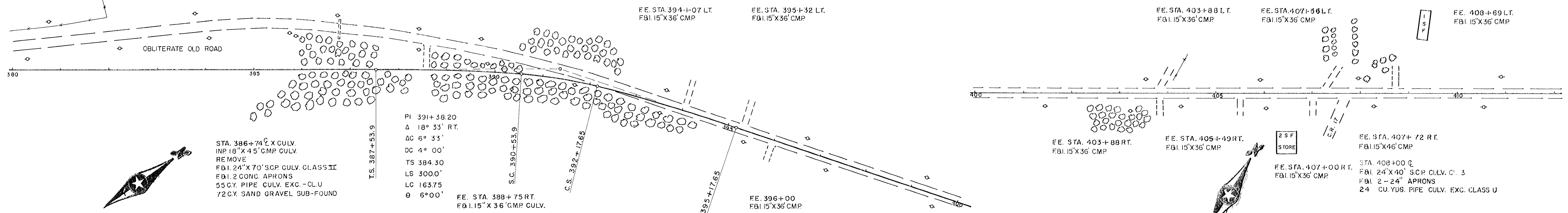
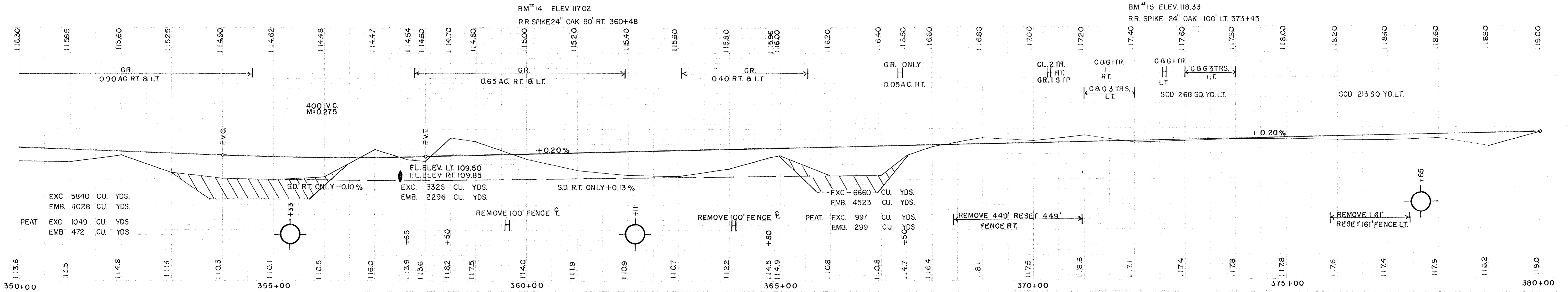
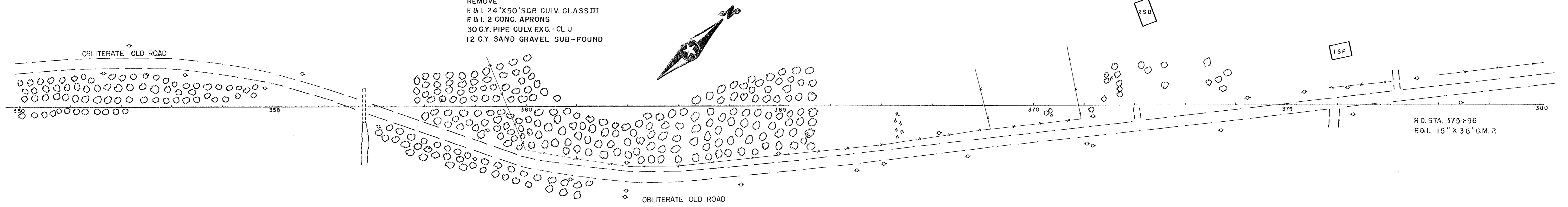




STA. 357+50 CULV.  
 INP. 24" X 79' C.M.P.  
 REMOVE  
 F&I 24" X 50' S.C.P. CULV. CLASS III  
 F&I 2 CONC. APRONS  
 30 C.Y. PIPE CULV. EXC. - CL.U  
 12 C.Y. SAND GRAVEL SUB-FOUND

FE. STA. 372+01 LT.  
 F&I 15" X 36' C.M.P.

FE. STA. 377+19 LT.  
 F&I 15" X 36' C.M.P.

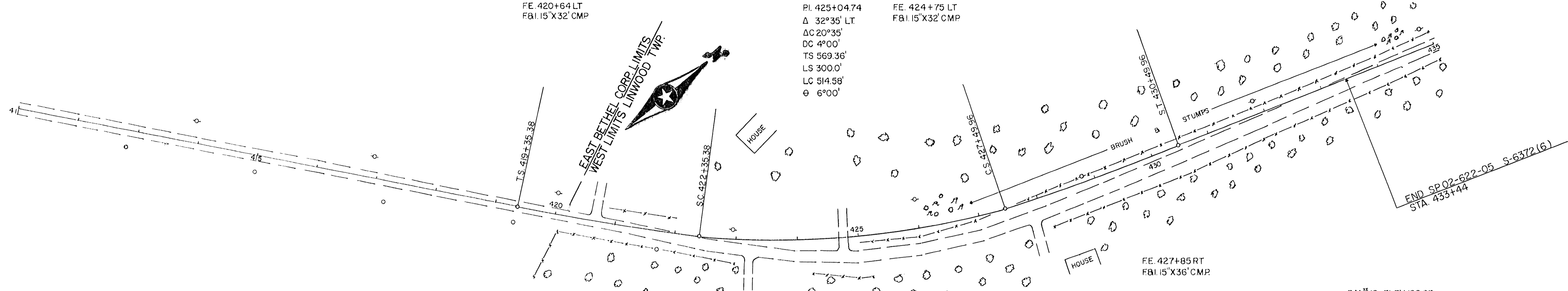
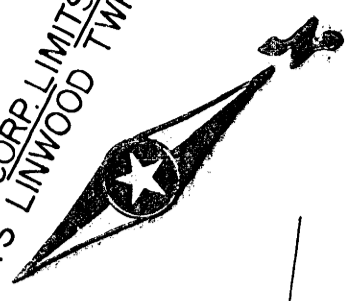


FE. 420+64 LT  
F&I 15'X32' CMP

PL 425+04.74  
Δ 32°35' LT  
ΔC 20°35'  
DC 4°00'  
TS 569.36'  
LS 300.0'  
LC 514.58'  
θ 6°00'

FE. 424+75 LT  
F&I 15'X32' CMP

EAST BETHEL CORRLIMITS  
WEST LIMITS LINWOOD TWP.



BM<sup>18</sup> ELEV. 122.53  
R.R. SPIKE 18" OAK 100' RT. 422+00

BM<sup>19</sup> ELEV. 122.93  
R.R. SPIKE 18" OAK 75' LT. 436+50

