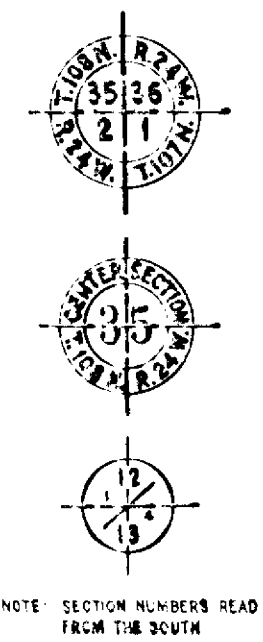
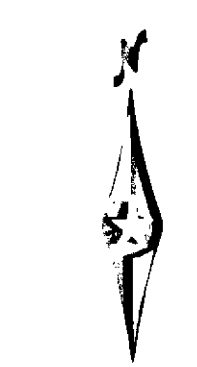


CONVENTIONAL SIGNS

STATE LINE
COUNTY LINE
TOWNSHIP OR RANGE LINE
SECTION LINE
QUARTER LINE
SIXTEENTH LINE
RIGHT OF WAY LINE
PRESENT ROAD "W" LINE
LIMITED ACCESS
PROPERTY LINE (2" x 4" 1/4")
LACED PLANTED PROPERTY
CORPORATE OR CITY LIMITS
TRUNK HIGHWAY CENTER LINE
RETAINING WALL
STEAM RAILROAD
ELECTRIC RAILROAD
BALANCED RIGHT OF WAY LINE
GREEN
RAILROAD OR ANTENNA
KEY RUN
SEWAGE DITCH
LIGHT TELEPHONE LINE
POWER POLE LINE
TELEPHONE OR TELEGRAPH LINE
TELEPHONE COLUMNS
RAILROAD
WEIR
BALANCED SNOW FENCE
DOORB OR WOODEN SNOW FENCE
STONE WALL OR FENCE
GRASS PAVEMENT
WATER PIPE
SEWER PIPE
GRAVEL PIT
SAND PIT
CLAY PIT
ROCK BLAST
BERM
MARK
TIMBER
BRUSH
ORCHARD
ROCK EDGE
SAND
EDGE OF CUT
TOE OF EMBANKMENT
CATCH BASIN
MANHOLE
DROP INLET
PIPE WYE
ARC JUMP
OTHER LAMP (3" J.M.C.)
RAILROAD CROSSING SIGN
ELECTRIC MACHINE SIGN
GRASSY GATE
CATTLE GATE
OVERHEAD (Highway Over)
UNDERPASS (Highway Under)
ABUTMENT, WALL & PIER
BRIDGE
COULVERT
BOULDER (On Road Flank)
CUMBERBELL STONE (TILE & BRICK SET-STOCK)
HERD
RAIL PIPE
STONE MONUMENT
WOOD STAKE OR NAIL
MEANDER CORNER



NOTE: SECTION NUMBERS READ FROM THE SOUTH



STATE OF MINNESOTA
DEPARTMENT OF HIGHWAYS

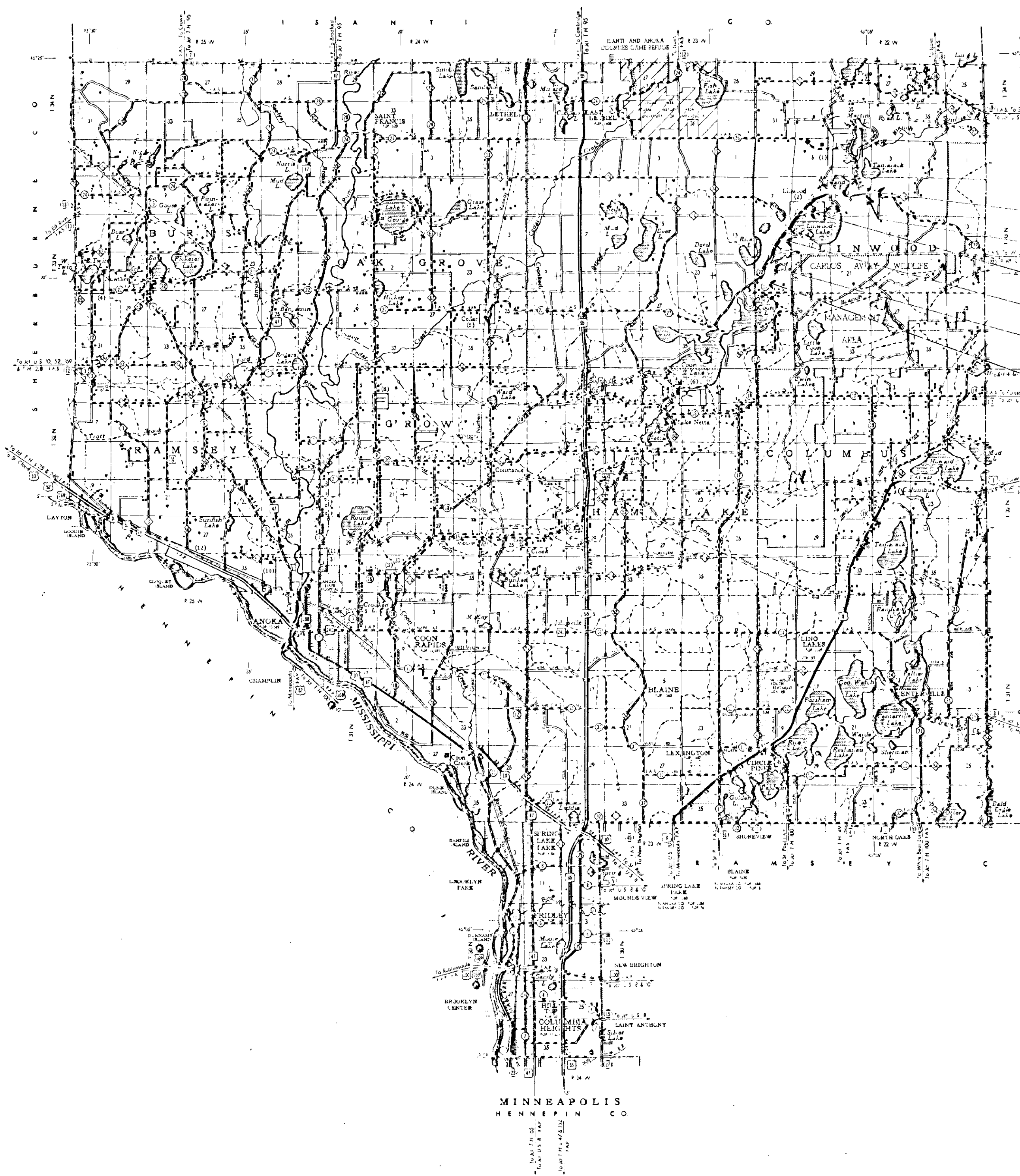
CONSTRUCTION PLAN FOR GRADING

County State Aid Highway No. 22

BETWEEN 1/2 MILE NE. OF JCT. CSAH No. 17 AND 1/4 MILE EAST OF JCT. CSAH No. 20
From APPROX 1/4 MILE EAST OF W 1/4 CORNER SECTION 13, TWP. 33 N., RANGE 22 W. To APPROX 620' NORTH & 630' WEST OF THE E. 1/4 COR. SEC. 9, TWP. 33 N., RANGE 22 W.

GROSS LENGTH..... 21,207 FEET..... 3.92 MILES
BRIDGES LENGTH..... 0 FEET..... 0 MILES
EXCEPTIONS LENGTH..... 0 FEET..... 0 MILES
NET LENGTH..... 21,207 FEET..... 3.92 MILES

Plan 1 inch = 200 Feet
PROFILE: Horz. 1 inch = 200 Feet, Vert. 1 inch = 20 Feet
WORKING PLANS: Horz. 1 inch = 100 Feet, Vert. 1 inch = 10 Feet
LAYOUT: Scale 1 inch = 100 Feet



END S.P. 02-622-06 S-6372(7)
STA. 643+87

- 643+17.70
- 642+60.70
- 555+99.70
- 555+26.65
- 485+05.93
- 485+20.80
- 449+55.50
- 449+05.50

BEGIN S.P. 02-622-06 S-6372(7)
STA. 433+44

MINN. PROJ. S-6372(7)

INDEX OF SHEETS
Sheet No. 1. Title Sheet & Layout Map
" No. 2. Est. Quantities & Typical Sec.
" No. 3. To 7 Plan & Profile

DESIGN SPEED 55 M.P.H.

DESIGN DATA

ADT (CURRENT YEAR) 1963	346
ADT (PROJECTED 1968)	807
T (HEAVY COMMERCIAL)	10%
DESIGN SPEED	55 M.P.H.
SOIL FACTOR	50%
STRUCTURAL DESIGN	7 U.L.T. 9

ALL APPLICABLE FEDERAL STATE AND LOCAL LAWS AND ORDINANCES WILL BE COMPLIED WITH, IN THE CONSTRUCTION OF THIS PROJECT

I HEREBY CERTIFY THAT THIS PLAN WAS PREPARED BY ME OR UNDER MY DIRECT SUPERVISION AND THAT I AM A DULY REGISTERED PROFESSIONAL ENGINEER UNDER THE LAWS OF THE STATE OF MINNESOTA

Edgar J. Lundberg COUNTY ENGINEER DATE July 2, 1965
ANOKA COUNTY REG. NO. 2551
RECOMMENDED FOR APPROVAL *Edgar J. Lundberg* DISTRICT ENGINEER 6-1 1965
RECOMMENDED FOR APPROVAL *J. F. Hoff* 7-31 1965
APPROVED 7-23 1965 *J. M. Burrell* STATE AID ENGINEER

DEPARTMENT OF COMMERCE
BUREAU OF PUBLIC ROADS
DISTRICT ENGINEER _____ DATE _____

MICRO-FILMED

S.A.P.
Minn. Project No. S-6372(7)
State Project No. 02-622-06

ANOKA County, Minnesota. County Proj. No. _____ Plan No. _____ Sheet 1 of 7 Sheets

SPECIFICATIONS

THE "STANDARD SPECIFICATIONS FOR HIGHWAY CONSTRUCTION", DATED JAN. 1, 1964, SHALL GOVERN.

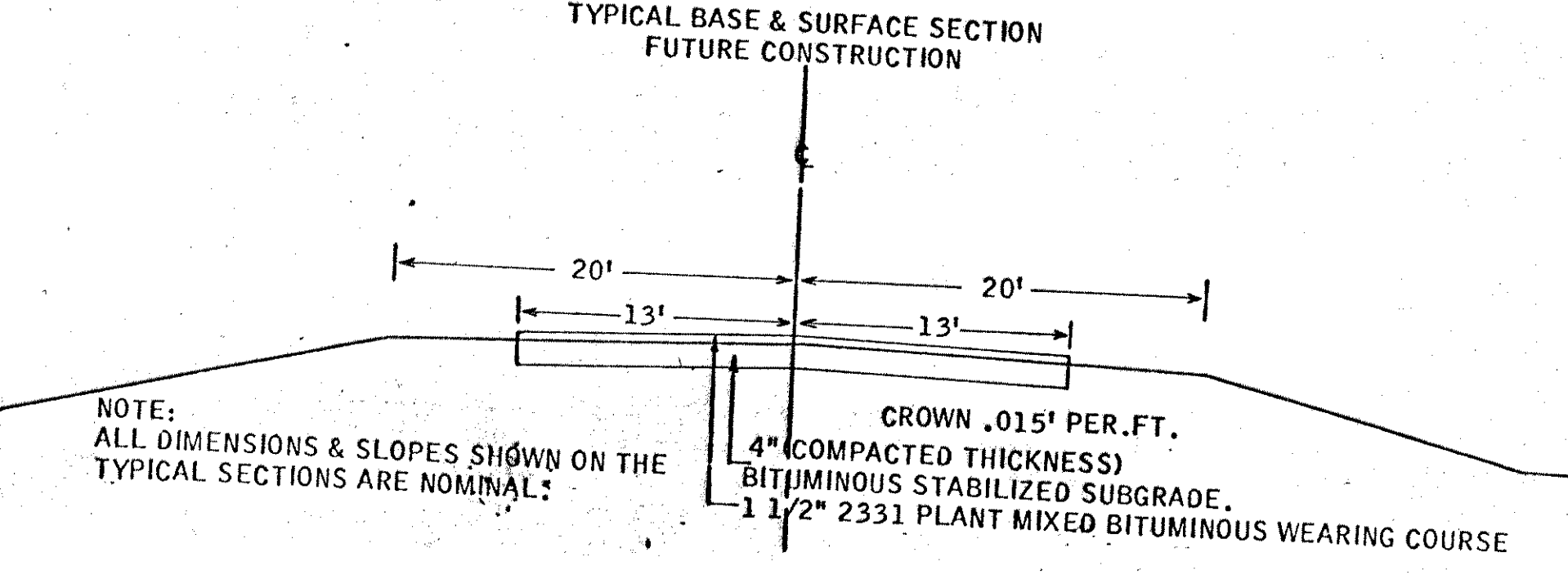
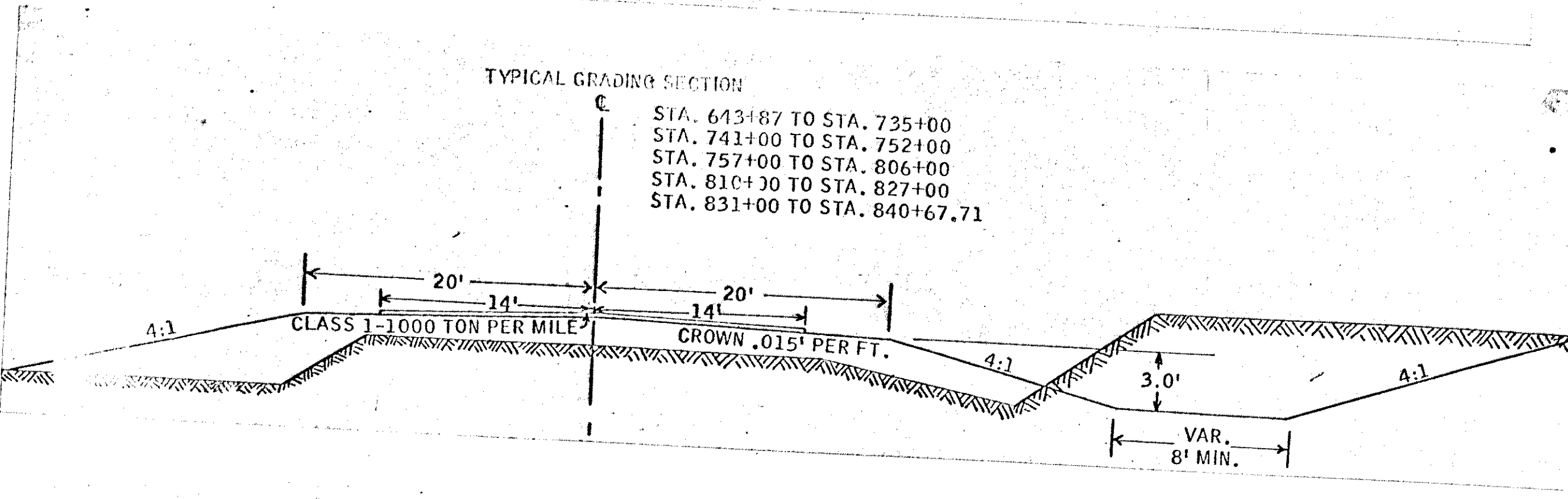
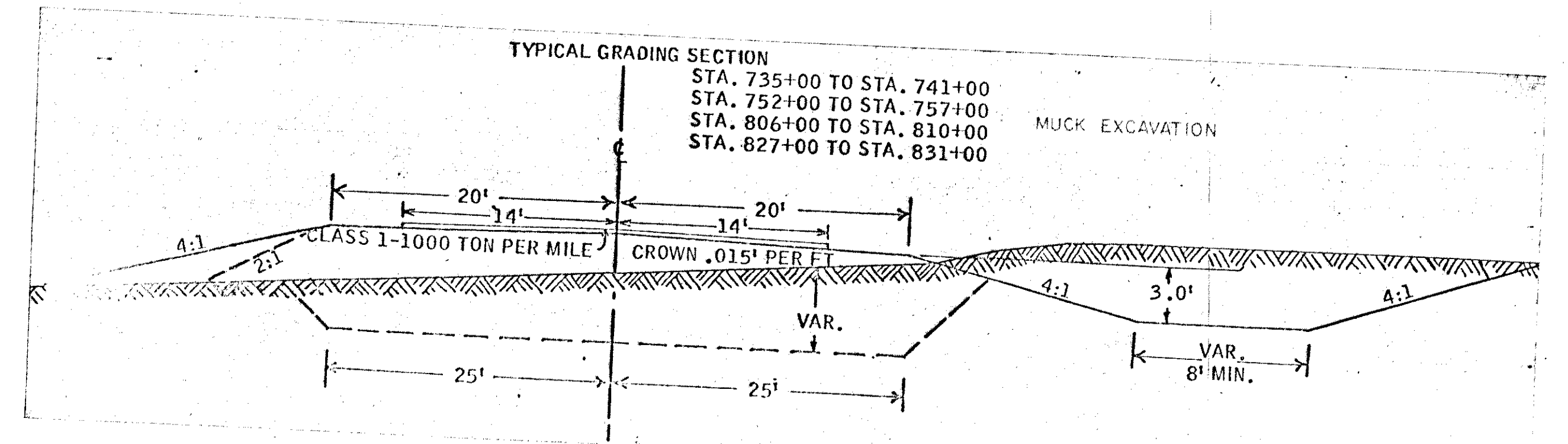
STATEMENT OF ESTIMATED QUANTITIES

ITEM NO.	ITEM	UNIT	TOTAL ESTIMATED QUANTITIES
ITEMS WITHOUT ALTERNATES			
2101.501	CLEARING		
2101.502	CLEARING	ACRE	16.60
2101.506	GRUBBING		24
2101.507	GRUBBING	ACRE	17.70
A 2104.501	REMOVE PORTABLE CULV.	TREE	35
A 2104.510	REMOVE FENCE	LIN. FT.	205
A 557.604	INSTALL FENCE	LIN. FT.	7,500
A 2105.501	COMMON EXCAVATION	LIN. FT.	7,081
A 2105.505	MUCK EXCAVATION	CU. YD.	89,065
A 2105.531	SALVAGE BIT. MIX	CU. YD.	7,420
A 2118.501	AGGREGATE SURFACING CLASS-1	CU. YD.	4,236
A 2130.501	WATER	TON	3,630
A 2451.501	STRUCTURE EXCAVATION CLASS U	M-GAL.	225
A 2501.524-22	22" SPAN CONC. PIPE ARCH CULV. CL 4	CU. YD.	71
A 2501.524-29	29" SPAN CONC. PIPE ARCH CULV. CL 4	LIN. FT.	52
A 2501.524-44	44" SPAN CONC. PIPE ARCH CULV. CL 4	LIN. FT.	254
A 2501.524-65	65" SPAN CONC. PIPE ARCH CULV. CL 4	LIN. FT.	54
A 2501.537-22	22" SPAN CONC. APRON	LIN. FT.	56
A 2501.537-29	29" SPAN CONC. APRON	APRON	2
A 2501.537-44	44" SPAN CONC. APRON	APRON	10
A 2501.537-65	65" SPAN CONC. APRON	APRON	2
C 2575.501	ROADSIDE SEEDING	ACRE	29.72
B 2575.505	SODDING	SQ. YD.	1,769
B 2575.511	MULCH MATERIAL TYPE 1 (3)	TON	69
B 2575.512	MULCH MATERIAL TYPE 2 (3)	GALLON	5,950
E 2123.503	MOTOR GRADER	HOUR	12
E 2123.509	DOZER	HOUR	12
ALTERNATE NO. 1-1			
D 2501.507-15	15" C.A.P. CULV.	LIN. FT.	216
D 2501.507-18	18" C.A.P. CULV.	LIN. FT.	216
ALTERNATE NO. 1-2			
D 2501.511-15	15" C.M.P. CULV.	LIN. FT.	216
D 2501.511-18	18" C.M.P. CULV.	LIN. FT.	216
ALTERNATE NO. 1-3			
D 2501.523-15	15" R.C.P. CULV. CL. 2	LIN. FT.	216
D 2501.523-18	18" R.C.P. CULV. CL. 2	LIN. FT.	216

- A THE ITEM OF 1903 SHALL NOT APPLY TO THESE ITEMS
- B ALL AREAS TO BE SODDED SHALL BE COVERED WITH A MINIMUM OF 3 INCHES OF TOPSOIL OR CLAY FOUND WITHIN THE LIMITS OF THIS PROJECT. THIS WILL BE CONSIDERED INCIDENTAL TO COMMON EXCAVATION.
- C COUNTY WILL FURNISH SEED & FERTILIZER ON THE PROJECT, SEE SPECIAL PROVISIONS.
- D ALTERNATE.
- E EQUIPMENT HOURS TO BE USED FOR ROAD OBLITERATION.
- F SOD BACKSLOPES AS DIRECTED BY ENGINEER TO REPLACE DISTURBED LAWNS

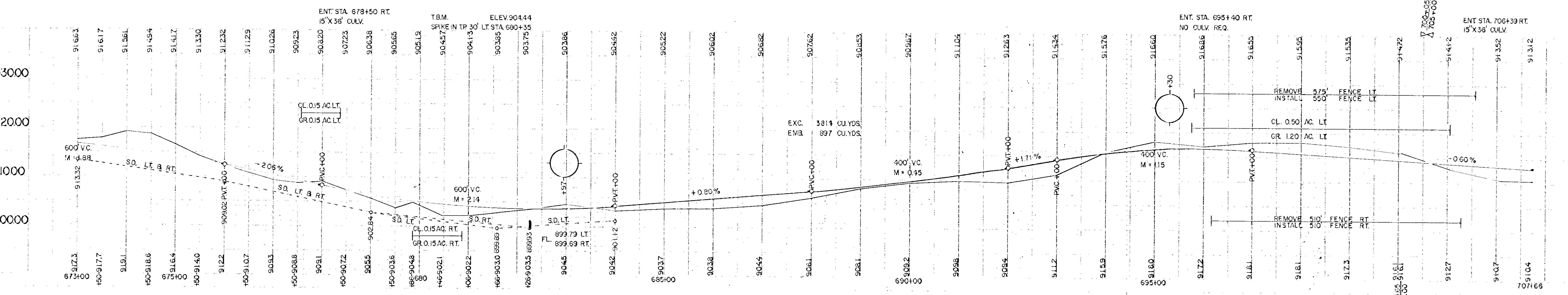
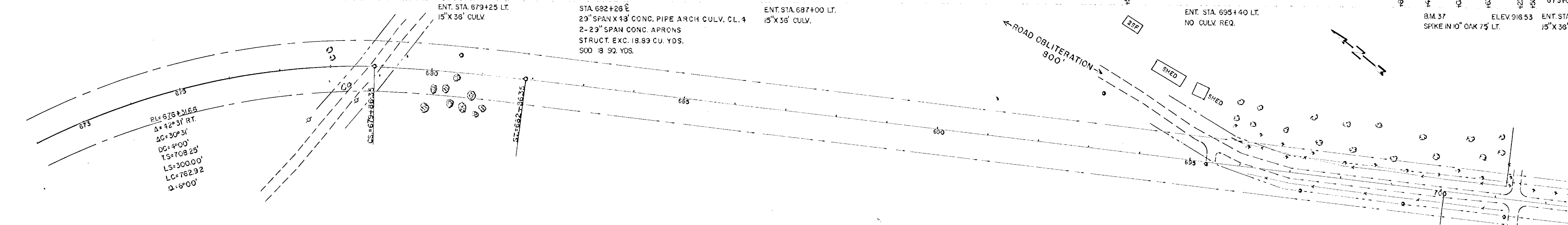
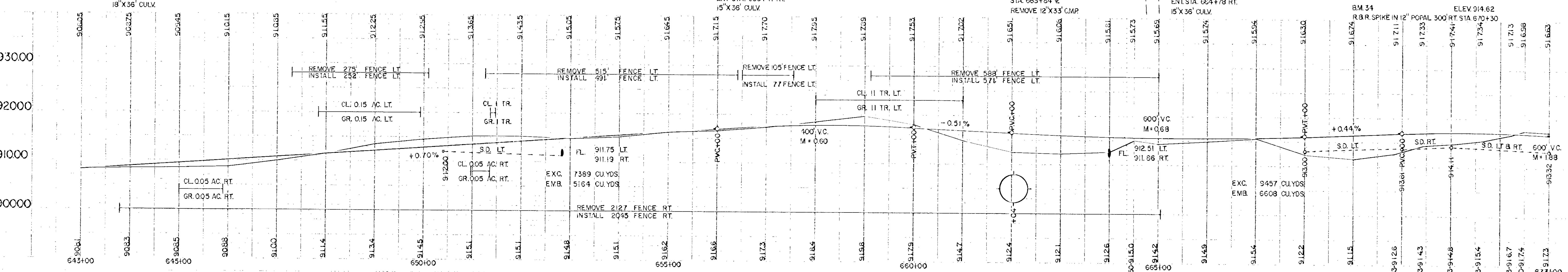
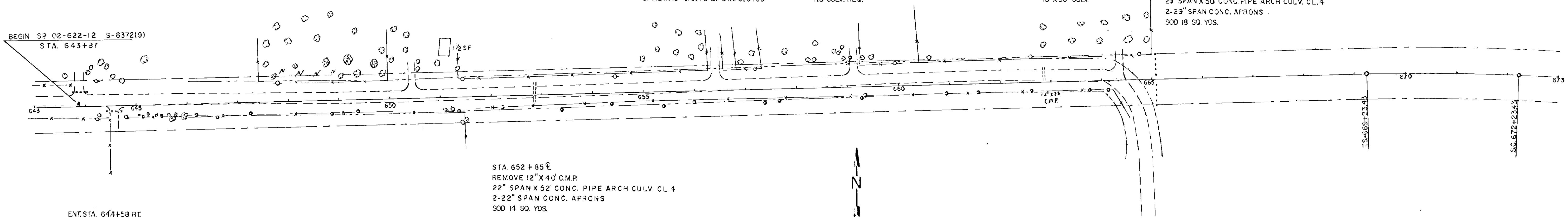
The following Standard Detail plates, approved by the Bureau of Public Roads, shall apply on this project.

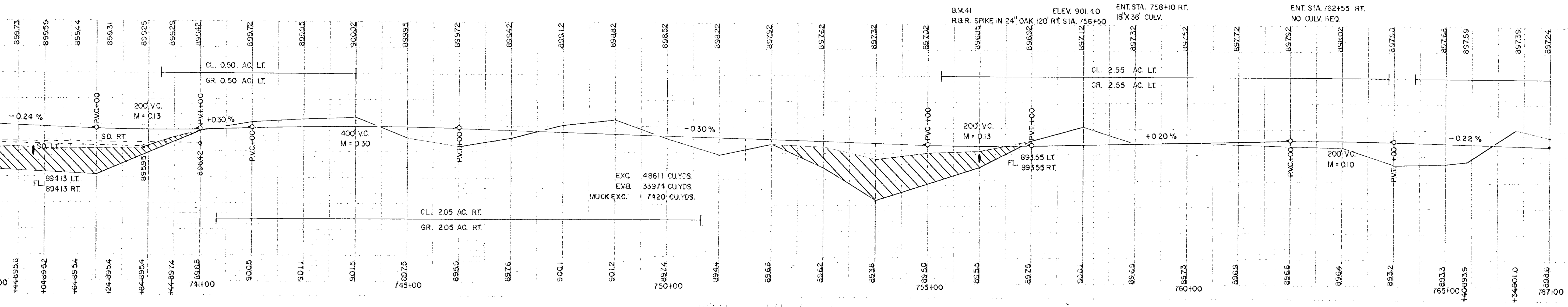
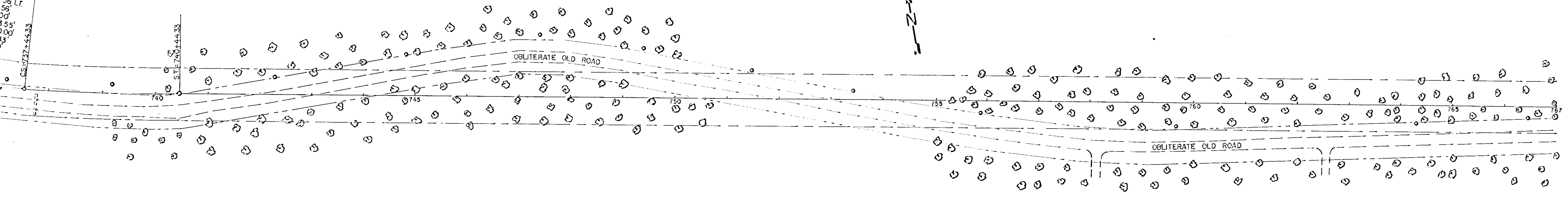
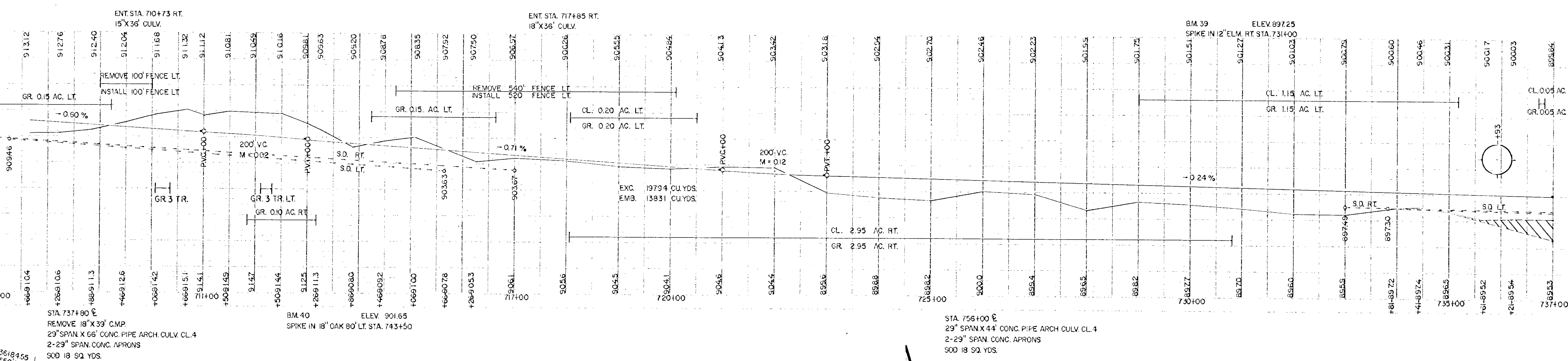
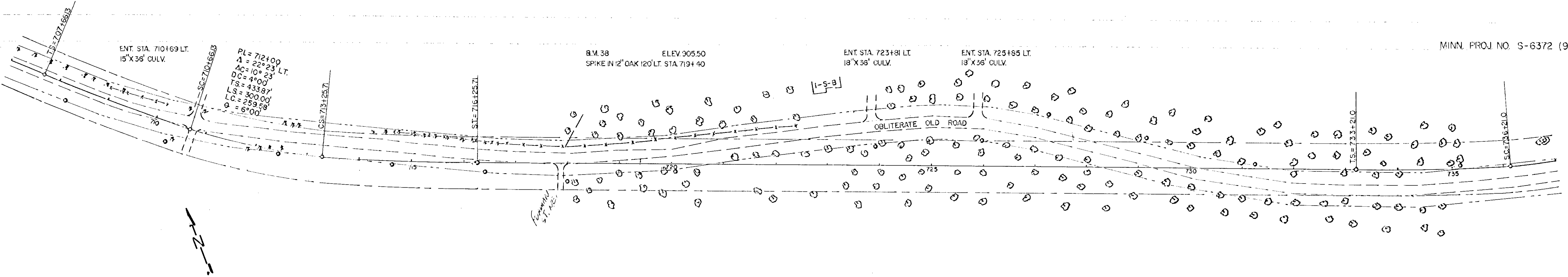
PLATE NO.	DESCRIPTION
3014-D	REINFORCED CONC. PIPE ARCH
3110-C	CONC. APRON FOR R.C.P. ARCH
8000-C	STANDARD BARRICADE S
8008-C	CONTRACTORS SIGNS
9000-A	APPROACHES & ENTRANCES
9102-B	SODDING AT PIPE CULVERT ENDS
0001 A	SPECIFICATION REFERENCE TO STANDARD PLATES
3000 F	REINFORCED CONCRETE PIPE
3040 C	CORRUGATED METAL PIPE



- NOTE: SALVAGE BIT. TO BE SPREAD 14 FEET ON EACH SIDE OF CENTER, LINE OVER THE ENTIRE LENGTH, TO A DEPTH OF AVAILABLE QUANTITIES.
- NOTE: CROSS SECTIONS ARE TO BE CONSTRUCTED IN CONFORMANCE WITH TYPICAL SECTIONS ON THIS PAGE.
- NOTE: ALL DIMENSIONS AND SLOPES SHOWN ON TYPICAL SECTIONS ARE APPROXIMATELY ONLY.
- NOTE: ALL CURVES WILL BE SUPERELEVATED IN ACCORDANCE WITH THE DESIGN STANDARDS DURING CONSTRUCTION.
- NOTE: WORKING AROUND MISC. UTILITY POLES WILL BE CONSIDERED INCIDENTAL TO COMMON EXCAVATION.

- NOTE: THE EMBANKMENT SHALL BE COMPACTED BY THE ORDINARY COMPACTION AS PROVIDED IN 205.3F2, EXCEPT THAT THE COMPACTING SHALL BE ACCOMPLISHED BY AN APPROVED VIBERATING COMPACTOR. THE COMPACTOR SHALL HAVE AN EMPTY WEIGHT OF NOT LESS THAN 3 TONS AND A DRUM OF NOT LESS THAN 30 INCHES IN DIAMETER NOR LESS THAN 40 INCHES IN LENGTH.
- NOTE: THE UPPER 1.0' OF NATURAL SOIL IS CONSIDERED UNSUITABLE FOR USE IN THE UPPER 1.0' OF ROADBED. THIS PORTION SHALL BE PLACED BELOW THE UPPER 1.0' OF EMBANKMENT DURING CONSTRUCTION.

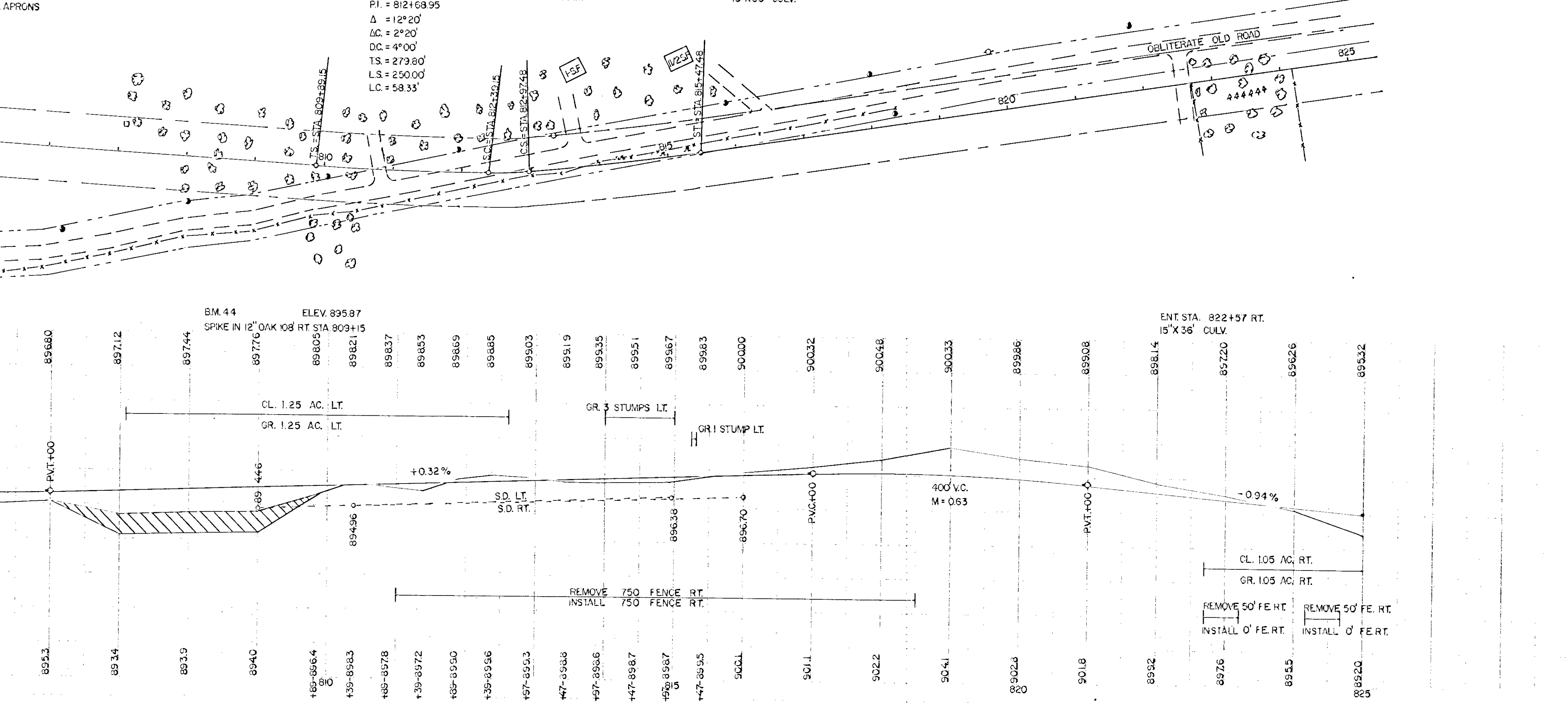
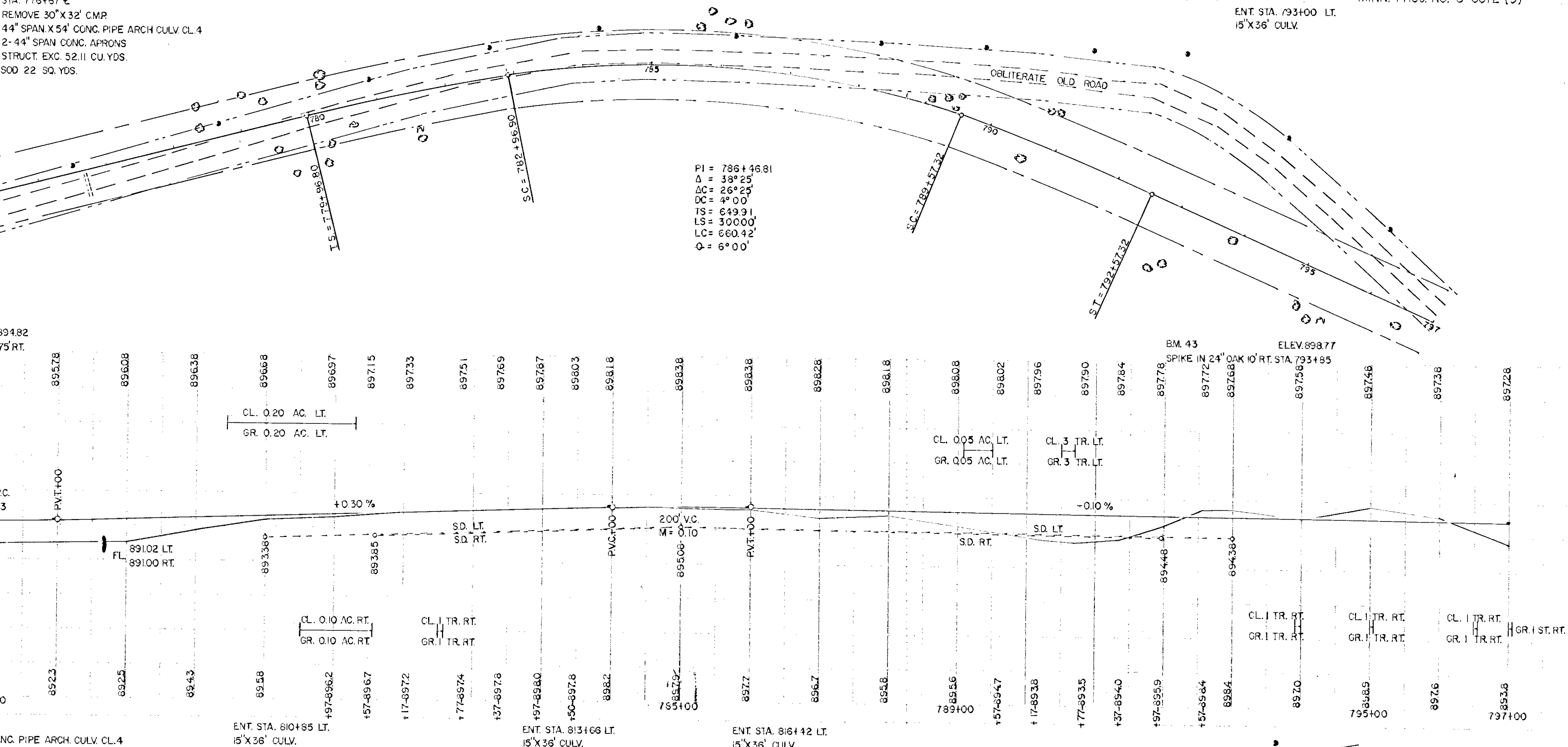




STA. 776+67.9
 REMOVE 30' X 32' CMP
 44' SPAN X 54' CONC. PIPE ARCH CULV. CL. 4
 2- 44' SPAN CONC. APRONS
 STRUCT. EXC. 52.11 CU. YDS.
 SOD 22 SQ. YDS.

ENT. STA. 793+00 LT.
 15' X 36' CULV.

MINN. PROJ. NO. S-6372 (9)



STA. 828+13.2
 REMOVE 48"X37" C.M.P.
 65" SPAN X 56" CONG. PIPE ARCH CULV. CL. 4
 2-65" SPAN CONG. APRONS
 SOD 26 SQ. YDS

PI = 837+04.19 LT.
 $\Delta = 17^{\circ}44'$
 $\Delta C = 2^{\circ}44'$
 DC = 59'00"
 T.S. = 329.19'
 LS = 300.00'
 LC = 54.67'

END SP. 02-622-12 S-6372(9)
 STA. 840+67.71

