

STATE OF MINNESOTA  
DEPARTMENT OF HIGHWAYS

CONSTRUCTION PLAN FOR GRADING

# County State Aid Highway No. 22

Between BLACKFOOT ST. And C.S.A.H. 9

From A PT. 81.94' W. OF THE NW. COR. SEC. 29, T33N, R.24W. To THE E. 1/4 COR. SEC. 29, T33N, R.24W

Give proper reference to Sections, Township and Range.

GROSS LENGTH	6,100.00	FEET	1.155	MILES
BRIDGES LENGTH	0	FEET	0	MILES
EXCEPTIONS LENGTH	0	FEET	0	MILES
NET LENGTH	6,100.00	FEET	1.155	MILES

### INDEX OF SHEETS

- Sheet No. 1 Title Sheet & Layout Map
- No. 2 Typical Sec.
- No. 3 To 4 Plan & Profile
- No. 5 To Road Approach
- No. 6 To 9 Cross Sections, 1979 Const.
- No. 10 To 13 Cross Sections, 1978 Const.

### SCALE

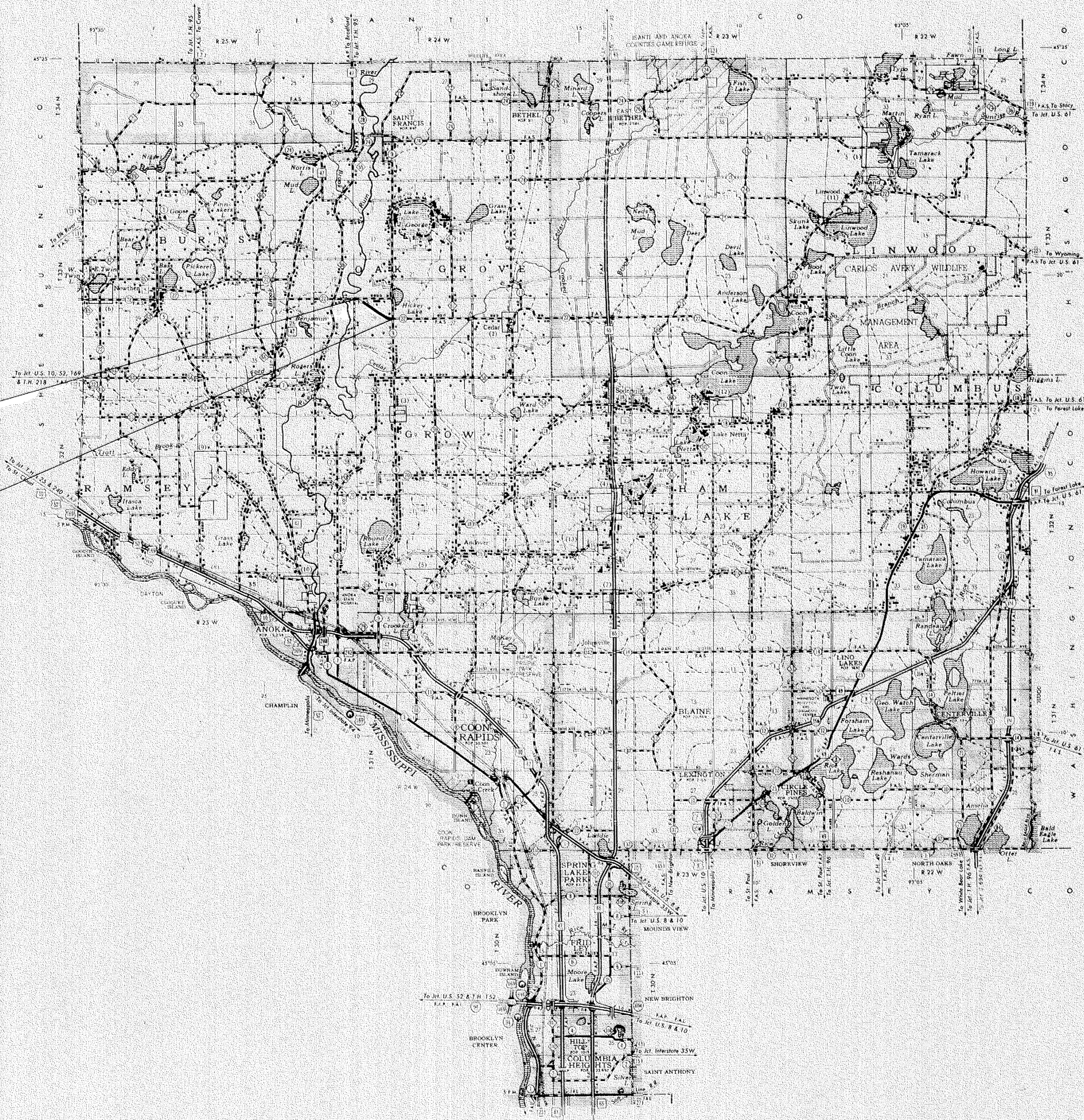
INDEX MAP	2 MI.
PLAN	100'
PROFILE	100' HORIZ. 10' VERT.
CROSS SECTIONS	10'

### CONVENTIONAL SIGNS

- STATE LINE
- COUNTY LINE
- TOWNSHIP OR RANGE LINE
- SECTION LINE
- QUARTER LINE
- SIXTEENTH LINE
- RIGHT-OF-WAY LINE
- PRESENT RIGHT-OF-WAY LINE
- CONTROL OF ACCESS LINE
- PROPERTY LINE (Except Land Lines)
- INDICATED PLATTED PROPERTY
- CORPORATE OR CITY LIMITS
- TRUNK HIGHWAY CENTER LINE
- RETAINING WALL
- RAILROAD
- RAILROAD RIGHT-OF-WAY LINE
- RIVER OR CREEK
- DRY RUN
- DRAINAGE DITCH
- ELECTRIC POWER LINE
- TELEPHONE OR TELEGRAM LINE
- JOINT TELEPHONE AND POWER CONDUIT
- TELEPHONE CABLE - AERIAL
- TELEPHONE CABLE - UNDERGROUND
- POWER CABLE - UNDERGROUND
- GAS MAIN
- CULVERT
- GRAPES
- BARBED WIRE FENCE
- WOODEN WIRE FENCE
- CHAIN LINK FENCE
- RAILROAD SNOW FENCE
- STONE WALL OR FENCE
- HEDGE
- WATER PIPE
- SEWER PIPE
- DRAIN TILE
- SPRINGS
- MARSH
- TIMBER
- ORCHARD
- BRUSH
- NURSERY
- CATCH BASIN
- MANHOLE
- FIRE HYDRANT
- STREET LIGHT
- RAILROAD CROSSING SIGN
- RAILROAD CROSSING BELL
- ELECTRIC WARNING SIGN
- CROSSING GATE
- CATTLE GUARD
- OVERPASS (Highway Over)
- UNDERPASS (Highway Under)
- BRIDGE
- BUILDING (One Story Frame)
- F. FRAME C. CONCRETE
- S. STONE T. TILE
- B. BRICK ST. STUCCO
- IRON PIPE OR ROD
- MONUMENT (STONE, CONCRETE, OR METAL)
- WOODEN HUB
- GRAVEL PIT
- SAND PIT
- BORROW PIT
- ROCK QUARRY
- MEANDER CORNER

BEGIN PROJECT C.P. 78-03-22  
STA. 39+00

END PROJECT C.P. 78-03-22  
STA. 100+00



### DESIGN DESIGNATION

ADT (CURRENT YEAR) \_\_\_\_\_  
 ADT (FUTURE YEAR) \_\_\_\_\_  
 T (HEAVY COMMERCIAL) \_\_\_\_\_  
 \_\_\_\_\_ Ton Design

Design Speed 50 MPH  
 Design Speed not achieved at:

STA \_\_\_\_\_ TO STA \_\_\_\_\_ MPH \_\_\_\_\_  
 STA \_\_\_\_\_ TO STA \_\_\_\_\_ MPH \_\_\_\_\_

### SPECIFICATIONS

THE "STANDARD" SPECIFICATIONS FOR HIGHWAY CONSTRUCTION, DATED JAN. 1, 1977, SHALL GOVERN.

ALL APPLICABLE FEDERAL, STATE AND LOCAL LAWS AND ORDINANCES WILL BE COMPLIED WITH, IN THE CONSTRUCTION OF THIS PROJECT.

I HEREBY CERTIFY THAT THIS PLAN WAS PREPARED BY ME OR UNDER MY DIRECT SUPERVISION AND THAT I AM A DULY REGISTERED PROFESSIONAL ENGINEER UNDER THE LAWS OF THE STATE OF MINNESOTA.

\_\_\_\_\_  
 COUNTY ENGINEER DATE \_\_\_\_\_

\_\_\_\_\_  
 ANOKA COUNTY REG. NO. 6549

RECOMMENDED FOR APPROVAL \_\_\_\_\_ 19\_\_\_\_  
 DISTRICT ENGINEER

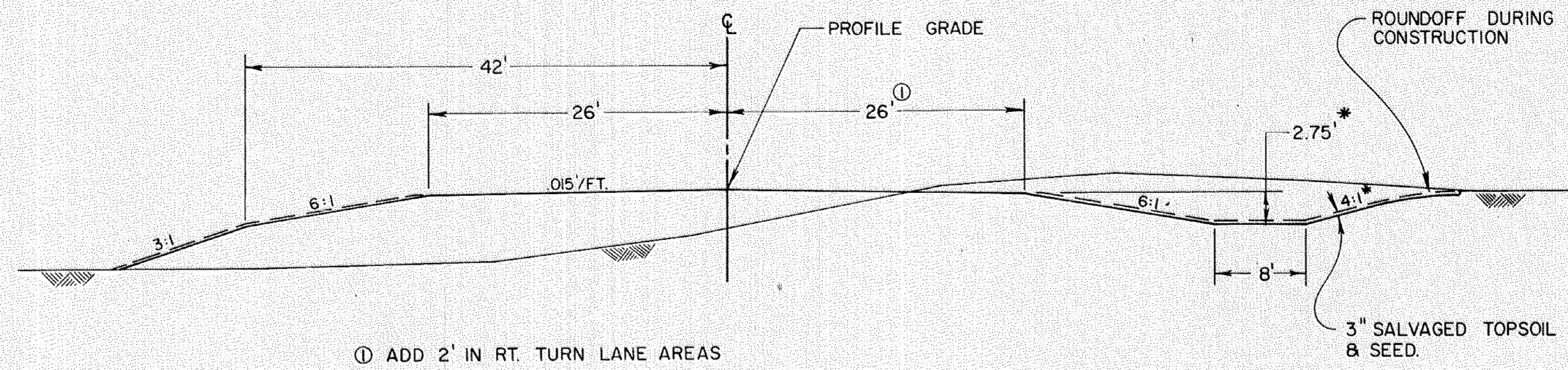
RECOMMENDED FOR APPROVAL \_\_\_\_\_ 19\_\_\_\_

APPROVED \_\_\_\_\_ 19\_\_\_\_  
 STATE AID ENGINEER

Minn. Proj. No. \_\_\_\_\_ County Proj. No. 78-03-22  
 State Proj. No. \_\_\_\_\_ S.A.P. \_\_\_\_\_

TYPICAL SECTIONS

GRADING

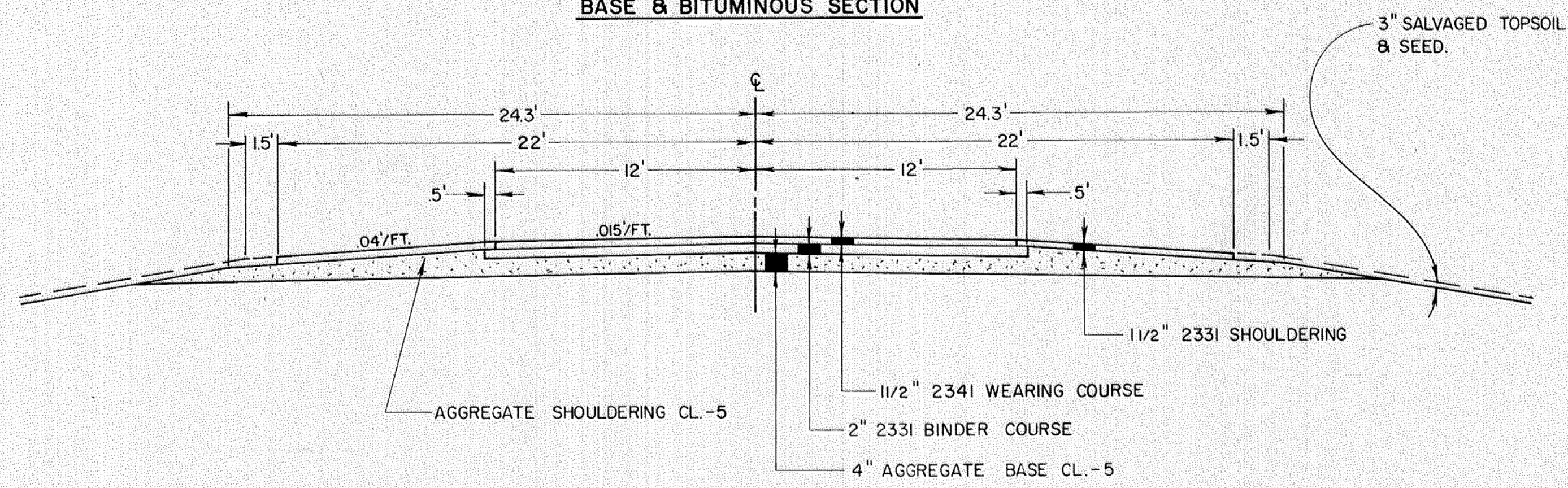


① ADD 2' IN RT. TURN LANE AREAS

\* SEE X-SECTIONS FOR SPECIAL DITCHES & MODIFIED SLOPES.

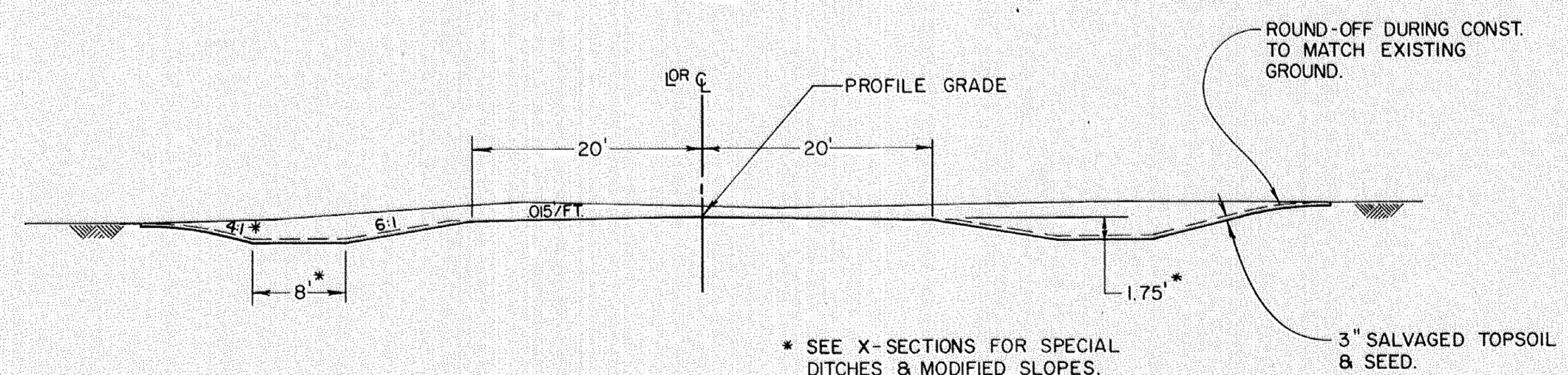
3" SALVAGED TOPSOIL & SEED.

BASE & BITUMINOUS SECTION



L ROAD APPROACH

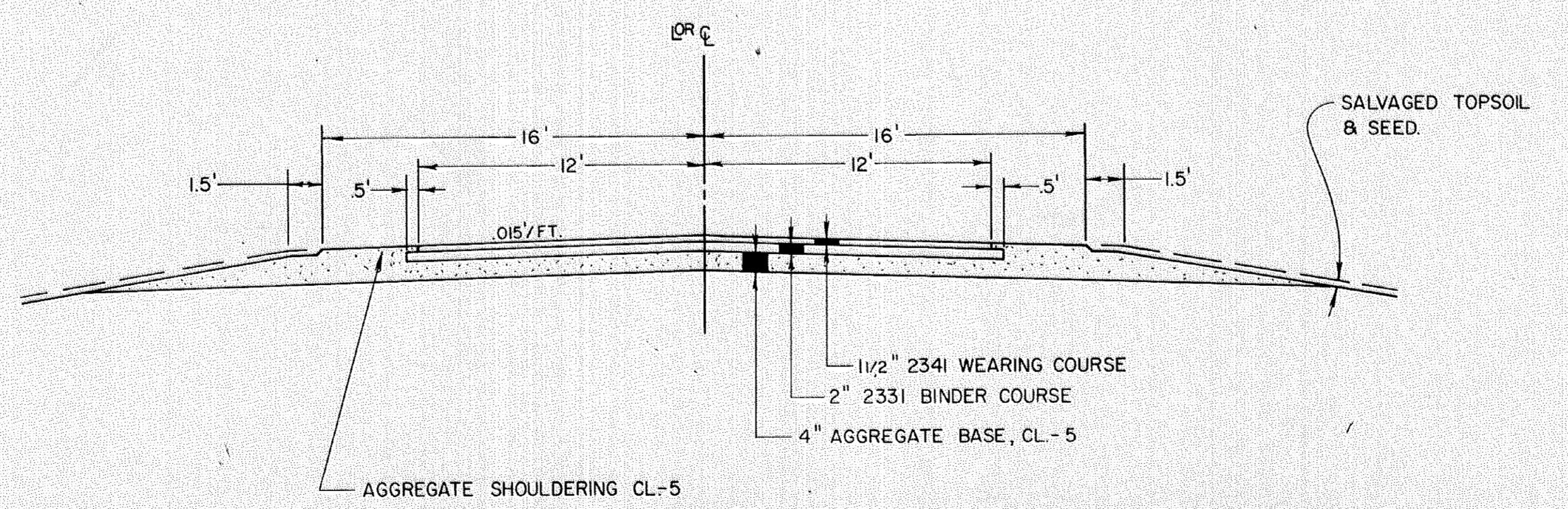
GRADING



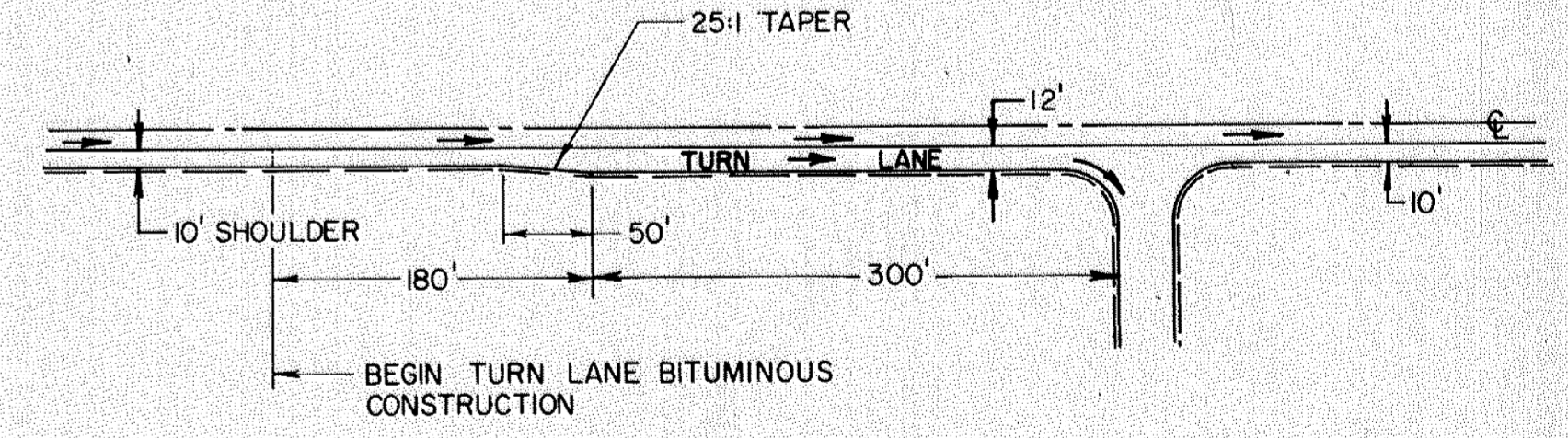
\* SEE X-SECTIONS FOR SPECIAL DITCHES & MODIFIED SLOPES.

3" SALVAGED TOPSOIL & SEED.

BASE & BITUMINOUS SECTION

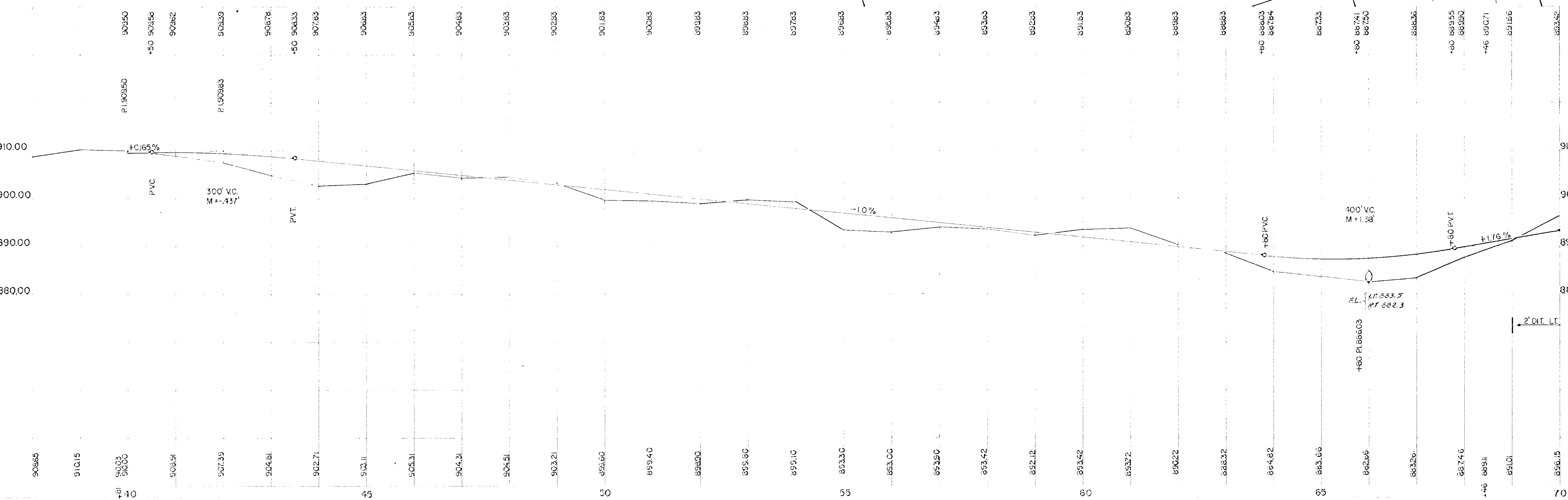
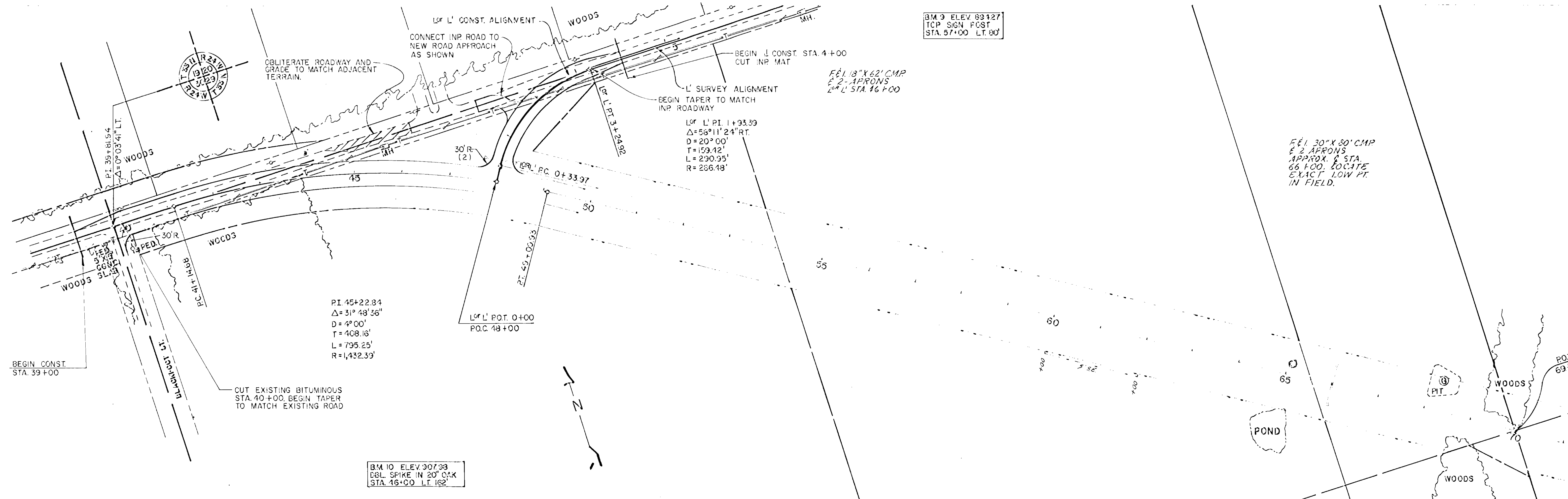


TYPICAL RIGHT TURN LANE



NOTE: CONST. TURN LANES AT ALL STREET APPROACHES DURING 1979 CONST.

L ROAD APPROACH  
SILVEROD ST.  
194 TH LANE NW.  
ORCHID ST.  
C.S.A.H. 9



BM #8, ELEV 899.32  
115' LT. OF STA. 72+00  
RR SPIKE IN SO. FACE OF 12" OAK

BM #7, ELEV 903.20  
90' LT. OF STA. 76+65  
RR SPIKE IN WEST FACE OF 16" OAK

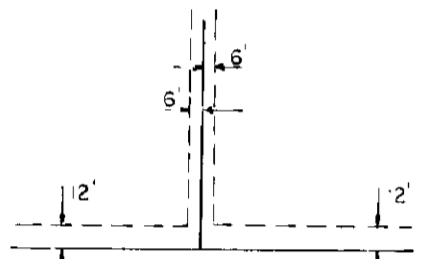
BM #6, ELEV 909.16  
75' LT. OF STA. 82+70  
DBLE HEAD NAIL IN TCPOF 2" X 2" STAKE

BM #4, ELEV 914.42  
110' LT. OF STA. 90+70  
RR SPIKE IN SO. FACE OF 24" RED OAK

BM #5, ELEV 904.64  
150' RT. OF STA. 86+70  
SPIKE IN WEST FACE OF DBLE 14" OAK

BM #3, ELEV 895.05  
200' RT. OF STA. 94+60  
RR SPIKE IN NO. FACE OF 12" RED OAK

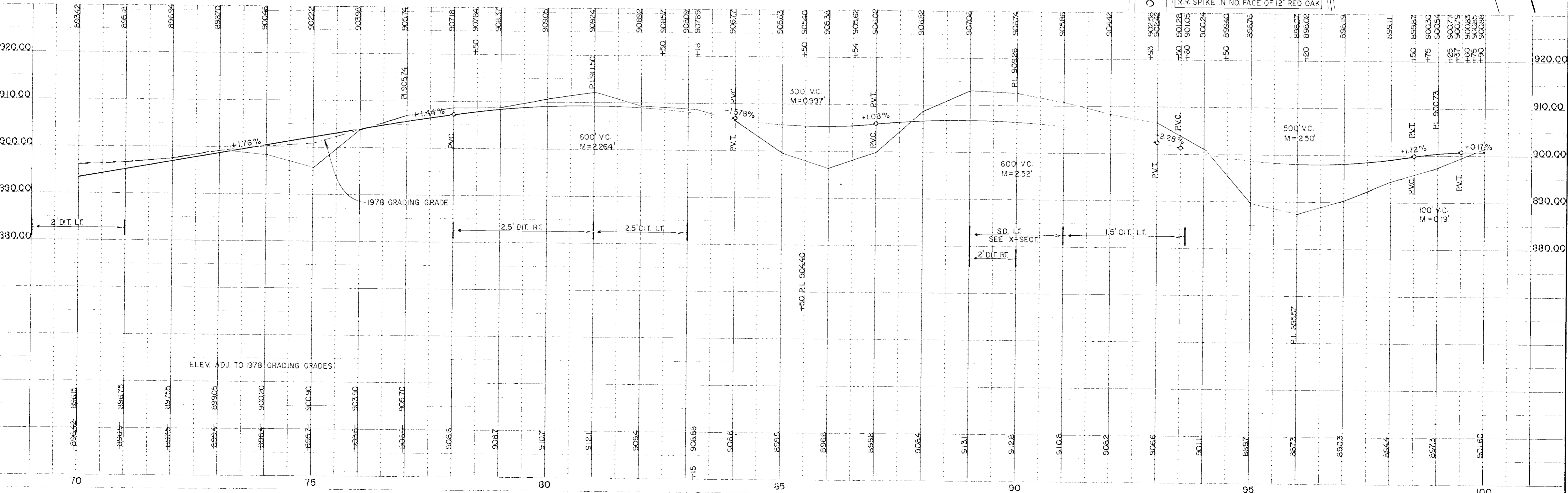
DRAINAGE AND UTILITY EASEMENTS ARE SHOWN THUS:



Being 6 feet in width, unless otherwise indicated, and adjoining lot lines, and 12 feet in width and adjoining street lines, as shown on the plat.

END PROJECT C.P. 78-03-22  
STA. 77+00, 1979 CONST.

END PROJECT C.P. 78-03-22  
P.O.T. 100+00



NO. \_\_\_\_\_  
PT. OF WAY CHECKED

NO. \_\_\_\_\_  
STRUCTURE NOTED  
ROTATING CHFD

