

STATE OF MINNESOTA
DEPARTMENT OF HIGHWAYS

CONSTRUCTION PLAN FOR GRADING

County State Aid Highway No. 24

BETWEEN W. CO. LINE AND JCT. CSAH NO. 24
1299.25' N. OF NW COR. SEC. 7 T-33N R-25W CENTER OF SEC. 8 T-33N R-25W
From AND FROM W. 14 COR. SEC. 7 T-33N R-25W To E. 14 COR. SEC. 8 T-33N R-25W

S.A.P. 24	GROSS LENGTH	10155.25 FEET	1.92 MILES	C.R. 69 & 70	GROSS LENGTH	10281.47 FEET	1.95 MILES
	BRIDGES LENGTH	FEET	MILES		BRIDGES LENGTH	FEET	MILES
	EXCEPTIONS LENGTH	FEET	MILES		EXCEPTIONS LENGTH	FEET	MILES
	NET LENGTH	10155.25 FEET	1.92 MILES		NET LENGTH	10281.47 FEET	1.95 MILES

Plan 1 inch = 200 Feet
 PROFILE: Horz. 1 inch = 200 Feet, Vert. 1 inch = 20 Feet
 WORKING PLANS: Horz. 1 inch = 100 Feet, Vert. 1 inch = 10 Feet

LAYOUT
 Scale 1 inch = 100 Feet

MINN. PROJ.

INDEX OF SHEETS

Sheet No. 1.	Title Sheet & Layout Map
" No. 2.	Est. Quantities & Typical Sec.
" No. 3.	To 6 Plan & Profile

DESIGN SPEED 50 M.P.H.

ALL APPLICABLE FEDERAL, STATE AND LOCAL LAWS AND ORDINANCES WILL BE COMPLIED WITH, IN THE CONSTRUCTION OF THIS PROJECT.

I HEREBY CERTIFY THAT THIS PLAN WAS PREPARED BY ME OR UNDER MY DIRECT SUPERVISION AND THAT I AM A DULY REGISTERED PROFESSIONAL ENGINEER UNDER THE LAWS OF THE STATE OF MINNESOTA.

Erlyng J. Sundheim COUNTY ENGINEER DATE 4-8-64
 ANOKA COUNTY REG. NO. 2551

APPROVAL FOR S.A.P. 02-624-07 ONLY

RECOMMENDED FOR APPROVAL *Edgar C. Pearson* 4-9 1964
 DISTRICT ENGINEER

RECOMMENDED FOR APPROVAL *L. A. Hoffman* 4-10, 1964

APPROVED 4-10, 1964 STATE AID ENGINEER

DEPARTMENT OF COMMERCE
 BUREAU OF PUBLIC ROADS

DISTRICT ENGINEER _____ DATE _____

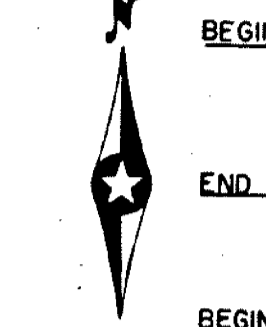
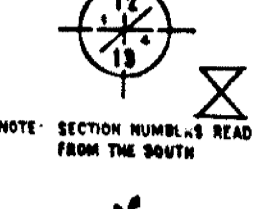
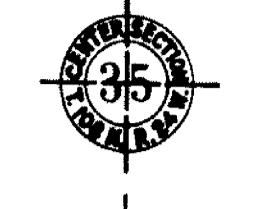
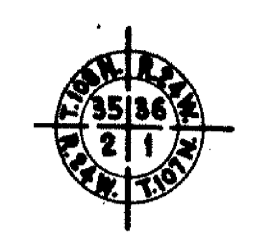
MICRO-FILMED

Minn. Project No. _____
State Project No. _____

County, Minnesota. County Proj. No. 64-08-698 Plan No. _____ Sheet 1 of 6 Sheets

CONVENTIONAL SIGNS

- STATE LINE
- COUNTY LINE
- TOWNSHIP OR RANGE LINE
- SECTION LINE
- QUARTER LINE
- SIXTEENTH LINE
- RIGHT-OF-WAY LINE
- PRESENT ROAD 1/2 LINE
- LIMITED ACCESS
- PROPERTY LINE (1/4 ACP LINE)
- VACATED PLATTED PROPERTY
- CORPORATE OR CITY LIMITS
- TRUNK HIGHWAY CENTER LINE
- RETAINING WALL
- STEAM RAILROAD
- ELECTRIC RAILROAD
- RAILROAD RIGHT-OF-WAY LINE
- GREEN
- RAPIDS OR WATERFALL
- DAY RUN
- DRAINAGE DITCH
- HIGH TENSION LINE
- POWER POLE LINE
- TELEPHONE OR TELEGRAPH LINE
- SHADE BAL
- WIRE FENCE
- BALLAST SHOW FENCE
- SHADE OF HIGHWAY SHOW FENCE
- STONE WALL OR FENCE
- WATER PIPE
- SEWER PIPE
- DRAIN TILE
- GRAVE PIT
- SEAD PIT
- CLAY PIT
- ROCK QUARRY
- SPRINGS
- MARSH
- TIMBER
- BRUSH
- ORCHARD
- ROCK LEDGE
- SAND
- EDGE OF CUT
- TOP OF EMBANKMENT
- CATCH BASIN
- MANHOLE
- DROP INLET
- FIRE HYDRANT
- ASC. LAMP
- OTHER LAMP (SHOW SIGN)
- RAILROAD CROSSING SIGN
- RAILROAD CROSSING WALL
- ELECTRIC HIGHWAY SIGN
- CROSSING GATE
- CATTLE GUARD
- OVERHEAD (Highway Over)
- UNDERPASS (Highway Under)
- ABUTMENT, WALL & PIER
- BRIDGE
- COVERED
- BUILDING (One Story Frame)
- C-CONCRETE S-STONE T-TILE & BRICK
- HEdge
- HIGH PIPE
- STONE MONUMENT
- WOOD STAKE OR NUB
- MEANDER CORNER



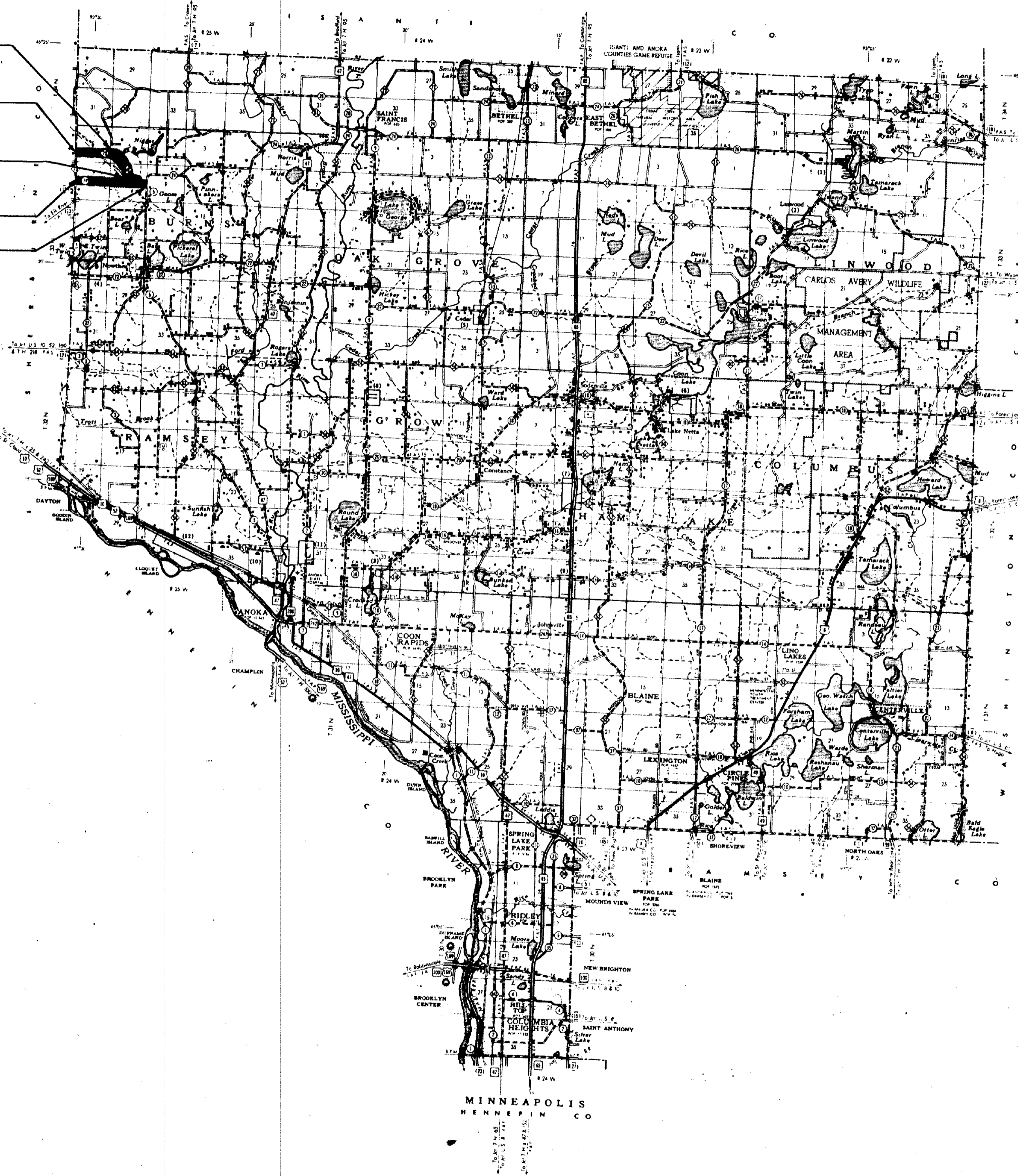
NOTE: SECTION NUMBERS READ FROM THE SOUTH

BEGIN C.P. 64-08-69 & 70
STA. 19+95.83

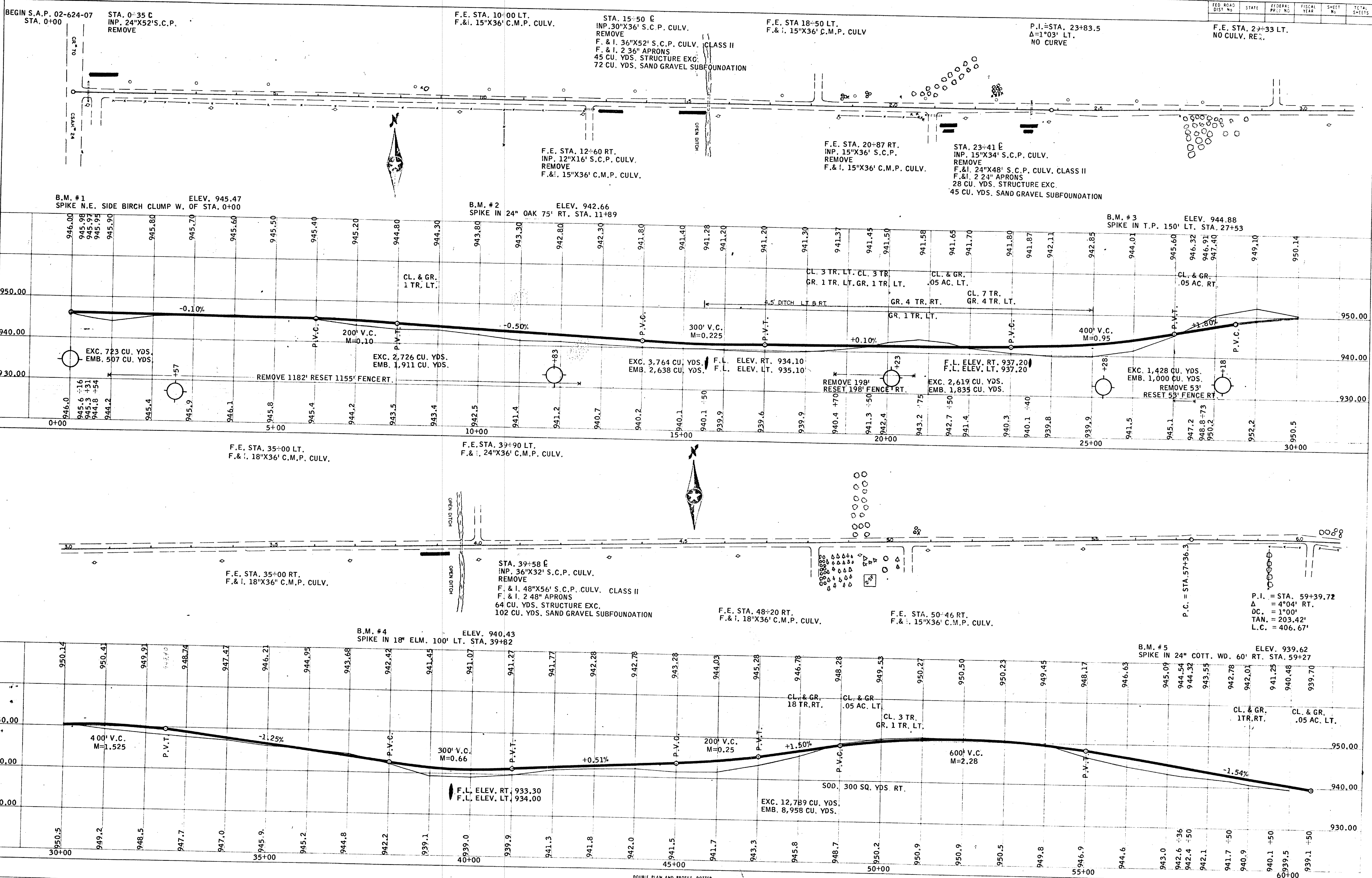
END C.P. 64-08-69 & 70
STA. 154+25.30

BEGIN S.A.P. 02-624-07
STA. 0+00

END S.A.P. 02-624-07
STA. 101+55.25



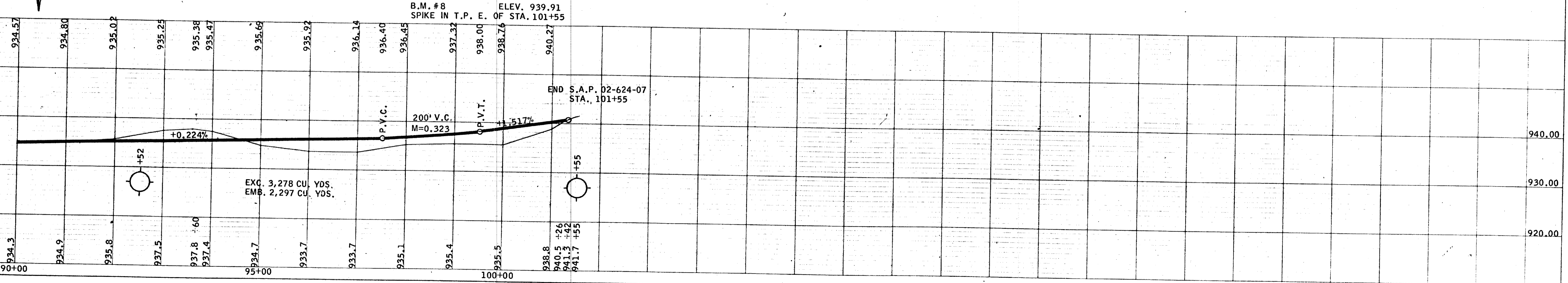
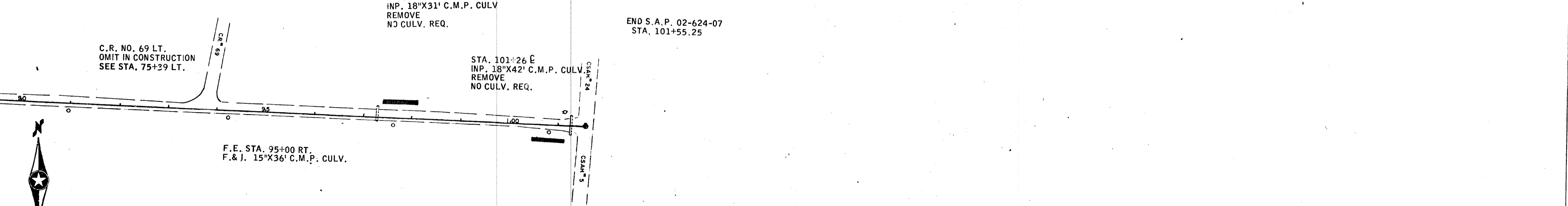
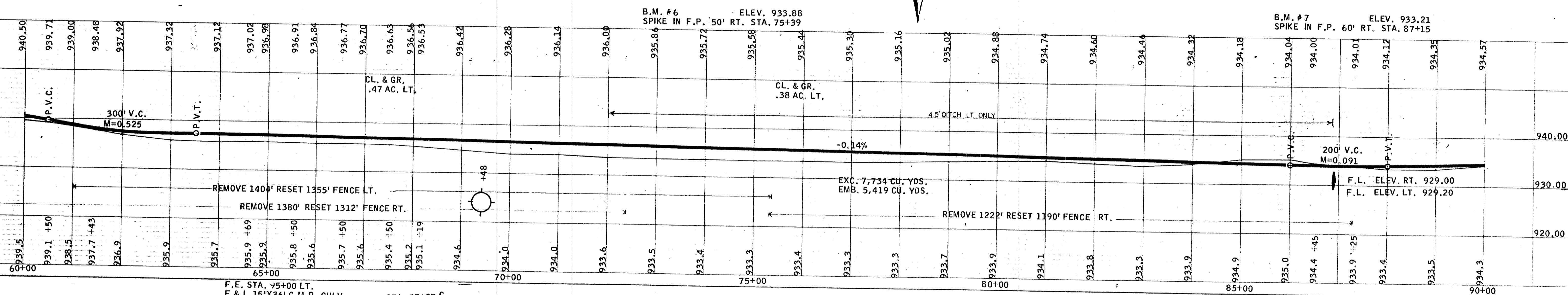
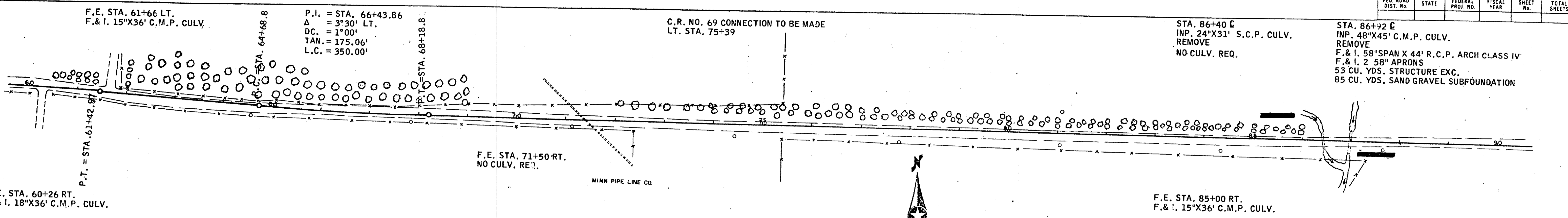
SPECIFICATIONS
THE "STANDARD SPECIFICATIONS FOR HIGHWAY CONSTRUCTION", DATED JAN. 1, 1964, SHALL GOVERN.



SURVEYED
 ALIGNED
 CHECKED
 RT. OF WAY CHECKED
 T. LAIN
 NO.

CHECKED
 B.M. NOTED
 STRUCTURE NOTATIONS CHECKED
 NO.

DOUBLE PLAN AND PROFILE DOTTED



DOUBLE PLAN AND PROFILE - DOTTED
 H. A. ROGERS CO. - MINNEAPOLIS - ST. PAUL - DULUTH

F.E. STA. 26+85 LT.
INP. 12"X20' S.C. CULV.
REMOVE
F. & I. 15"X36' C.M.P. CULV.

F.E. STA. 37+28 LT.
F. & I. 18"X36' C.M.P. CULV.

P.I. STA. 42+83.83
Δ=0°26' LT.
NO CURVE

F.E. STA. 42+84 LT.
INP. 18"X24' S.C. CULV.
REMOVE
F. & I. 36"X40' C.M.P. CULV.

F.E. STA. 21+23 RT.
INP. 12"X20' S.C. CULV.
REMOVE
F. & I. 15"X28' C.M.P. CULV.

F.E. STA. 26+85 RT.
F. & I. 15"X36' C.M.P. CULV.

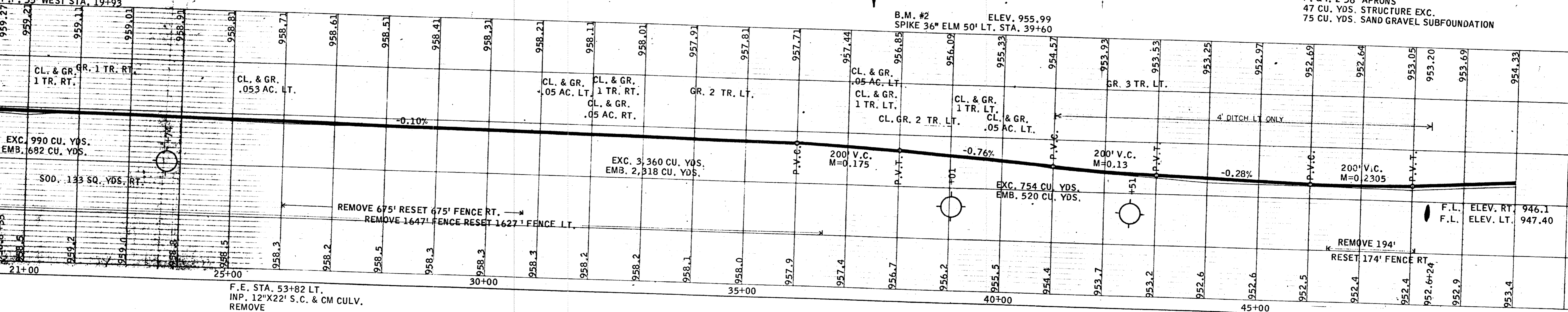
F.E. STA. 33+49 RT.
F. & I. 15"X36' C.M.P. CULV.

F.E. STA. 40+15 RT.
F. & I. 18"X36' C.M.P. CULV.

STA. 48+24 C
INP. 30"X44' C.M.P. CULV.
REMOVE
F. & I. 36"X54' S.C.P. CULV. CLASS II
F. & I. 2 36" APRONS
47 CU. YDS. STRUCTURE EXC.
75 CU. YDS. SAND GRAVEL SUBFOUNDATION

ELEV. 959.73
P.P. 35' WEST STA. 19+93

B.M. #2
SPIKE 36" ELM 50' LT. STA. 39+60
ELEV. 955.99

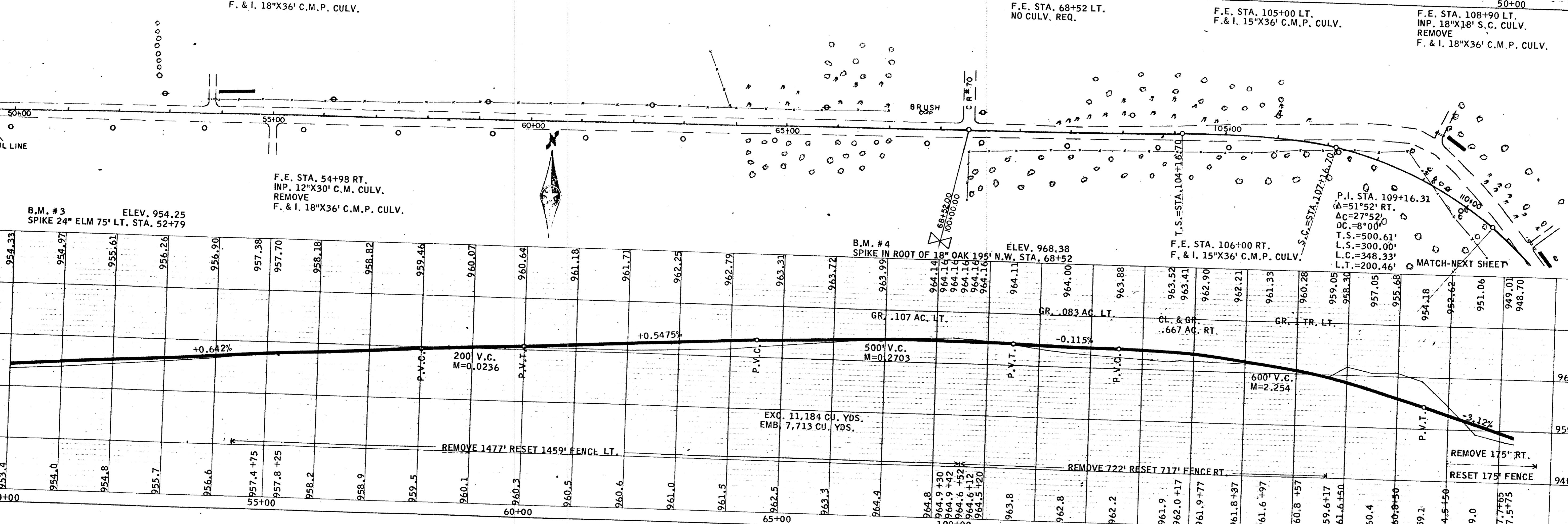


F.E. STA. 53+82 LT.
INP. 12"X22' S.C. & CM CULV.
REMOVE
F. & I. 18"X36' C.M.P. CULV.

F.E. STA. 68+52 LT.
NO CULV. REQ.

F.E. STA. 105+00 LT.
F. & I. 15"X36' C.M.P. CULV.

F.E. STA. 108+90 LT.
INP. 18"X18' S.C. CULV.
REMOVE
F. & I. 18"X36' C.M.P. CULV.



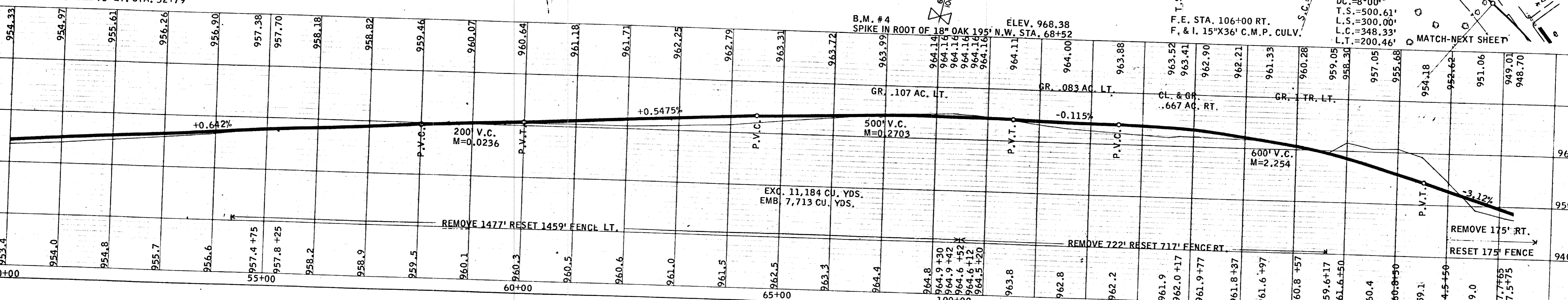
F.E. STA. 54+98 RT.
INP. 12"X30' C.M. CULV.
REMOVE
F. & I. 18"X36' C.M.P. CULV.

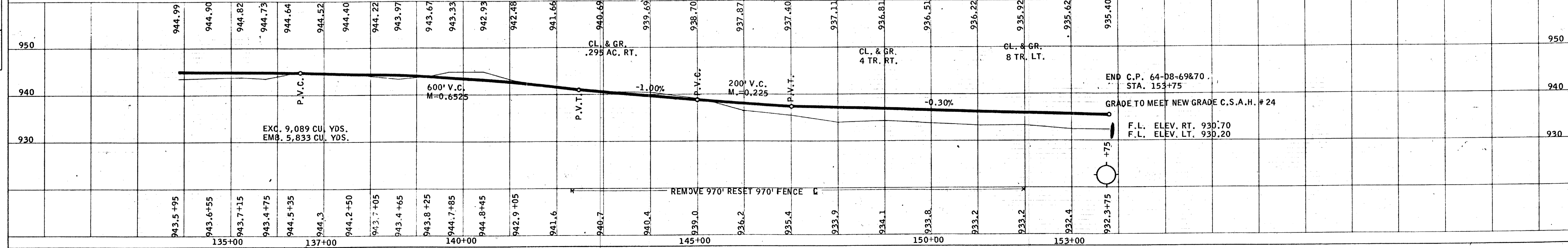
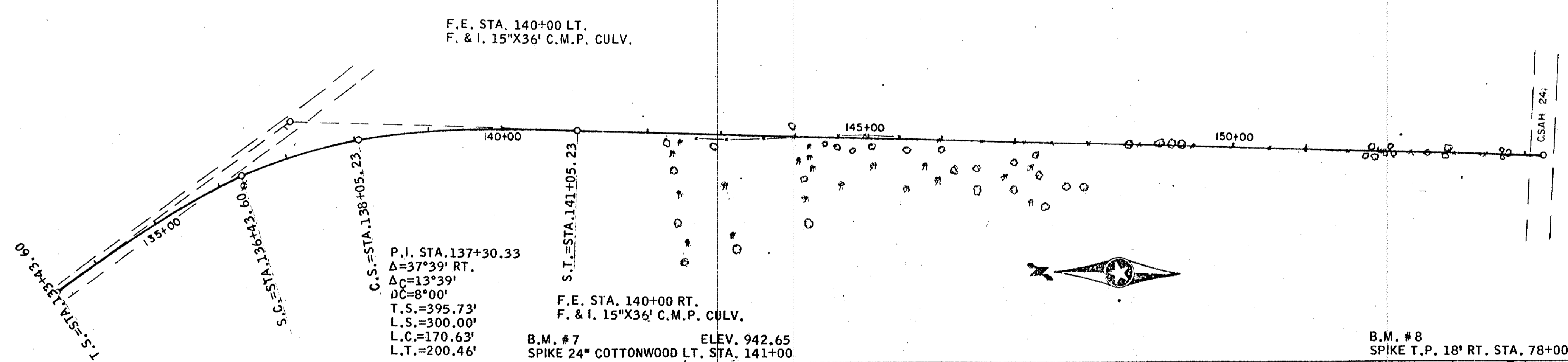
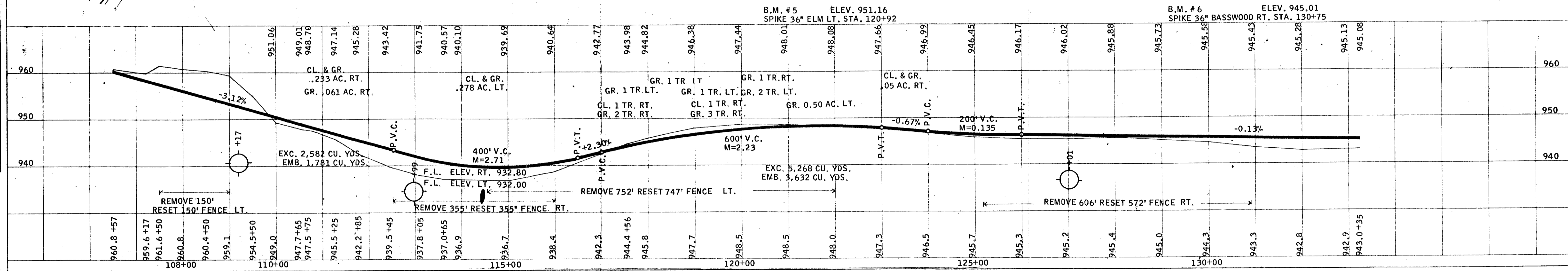
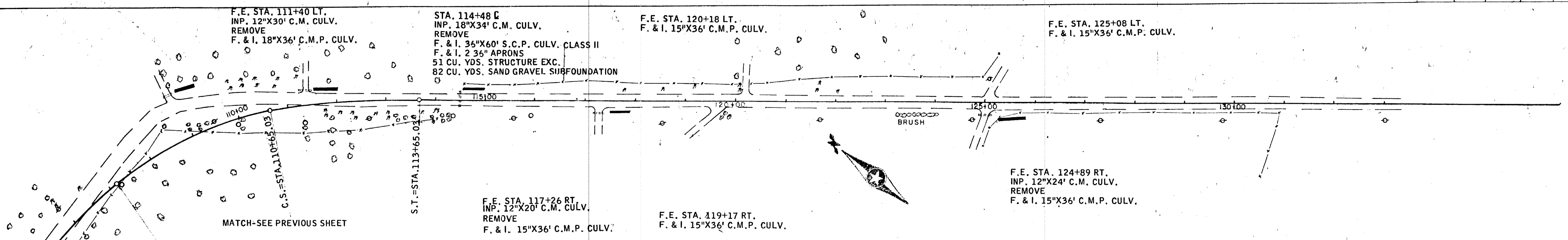
B.M. #4
SPIKE IN ROOT OF 18" OAK 195' N.W. STA. 68+52
ELEV. 968.38

F.E. STA. 106+00 RT.
F. & I. 15"X36' C.M.P. CULV.

P.I. STA. 109+16.31
Δ=51°52' RT.
ΔC=27°52'
DC=8°00'
T.S.=500.61'
L.S.=300.00'
L.C.=348.33'
L.T.=200.46'

B.M. #3
SPIKE 24" ELM 75' LT. STA. 52+79
ELEV. 954.25





DOUBLE PLAN AND PROFILE - DOTTED
 W. A. ROGERS CO. - MINNEAPOLIS ST. PAUL, DULUTH