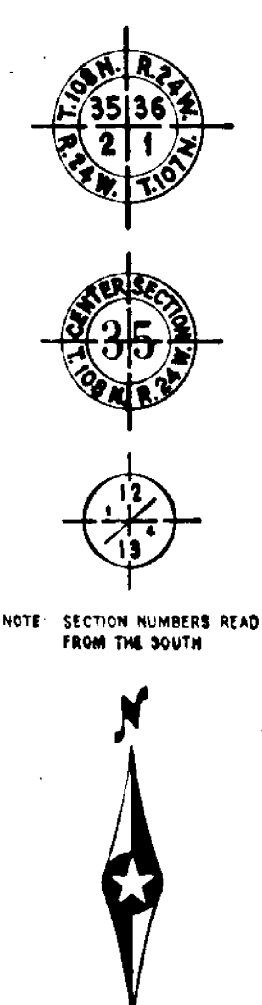


CONVENTIONAL SIGNS

STATE LINE	TIMBER
COUNTY LINE	BRUSH
TOWNSHIP OR RANGE LINE	DECKARD
SECTION LINE	ROCK LEDGE
QUARTER LINE	SAND
SIXTEENTH LINE	EDGE OF CUT
RIGHT-OF-WAY LINE	TOE OF EMBANKMENT
PRESENT ROAD 1/4 LINE	CATCH BASIN
LIMITED ACCESS	MANHOLE
PROBENT LINE (LUMP AND VIAL)	POOP HOLE
VACATED PLATTED PROPERTY	FIRE HYDRANT
CORPORATE OR CITY LIMITS	ARC LAMP
TRUNK HIGHWAY CENTER LINE	OTHER LAMP (DASH LINE)
RETAINING WALL	RAILROAD CROSSING SIGN
STEAM RAILROAD	ELECTRIC WARNING SIGN
ELECTRIC RAILROAD	CROSSING GATE
RAILROAD RIGHT-OF-WAY LINE	CATTLE GUARD
CREEK	OVERHEAD Highway Over
RAPIDS OR WATERFALL	UNDERPASS (Highway Under)
DRY RUN	ABUTMENT, WALL & PIER
DRAINAGE DITCH	BRIDGE
HIGH TENSION LINE	CONCRETE
TELEPHONE OR TELEGRAPH LINE	CONCRETE (Over Snow)
RAILROAD LINE	C-CONCRETE & STONE
RAILROAD CROSSING SIGN	ST-CONCRETE
ELECTRIC WARNING SIGN	STUCCO
CROSSING GATE	HEDGE
CATTLE GUARD	IRON PIPE
OVERHEAD Highway Over	STONE MONUMENT
UNDERPASS (Highway Under)	WOOD STAKE OR HUB
ABUTMENT, WALL & PIER	MEANDER CORNER
BRIDGE	
CONCRETE	
CONCRETE (Over Snow)	
C-CONCRETE & STONE	
ST-CONCRETE	
HEDGE	
IRON PIPE	
STONE MONUMENT	
WOOD STAKE OR HUB	
MEANDER CORNER	



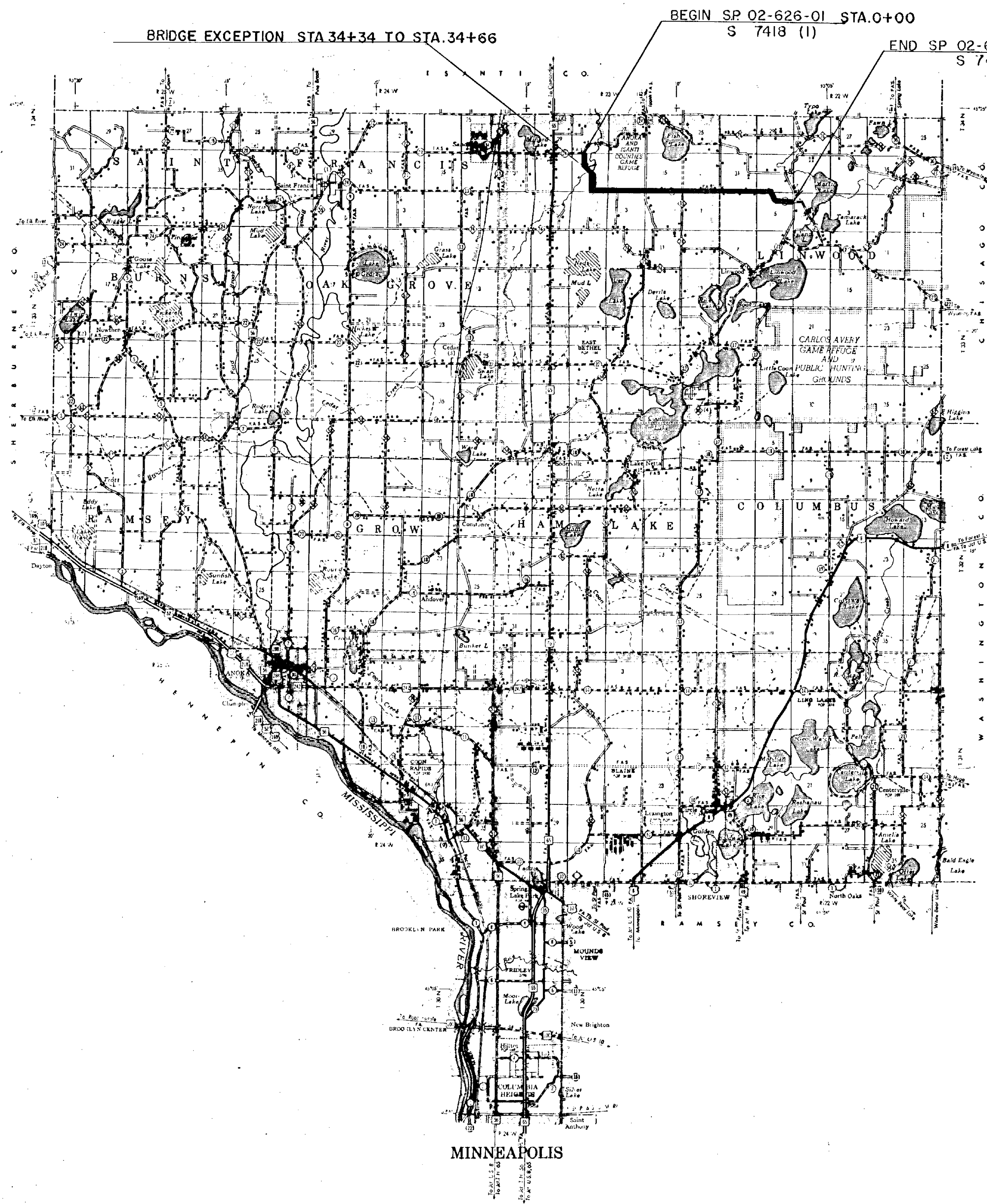
STATE OF MINNESOTA
DEPARTMENT OF HIGHWAYS
CONSTRUCTION PLAN FOR

County State Aid Highway No. 26

BETWEEN CASH 24-2 MILES EAST OF AND 1.5 MILES N.W. OF JUNCT WITH
From A POINT 1,928.55' EAST OF A POINT 1219.34' SOUTHERLY OF
N.W. COR. SEC. 33, T-34, N. R-23, W. To N.E. COR. SEC. 5, T-33, N. R-22, W.
Give proper reference to Sections, Township and Range

GROSS LENGTH	34,500 FEET	6.534 MILES
BRIDGES LENGTH	32 FEET	0.006 MILES
EXCEPTIONS LENGTH	32 FEET	0.006 MILES
NET LENGTH	34,468 FEET	6.528 MILES

SCALES
Plan 1 inch = 200 Feet
PROFILE: Horiz. 1 inch = 200 Feet, Vert. 1 inch = 20 Feet
WORKING PLANS: Horiz. 1 inch = 100 Feet, Vert. 1 inch = 10 Feet
LAYOUT: Cross Section, 1 inch = 10 FEET
Scale 1 inch = Feet



MINN. PROJ. S 7418(1)

INDEX OF SHEETS

Sheet No. 1	Title Sheet & Layout Map
No. 2	Est. Quantities & Typical Sec.
No. 3 To 9	Plan & Profile
No. 10 To 34	Cross Sections

DESIGN SPEED 60 MPH.

ALL APPLICABLE FEDERAL, STATE AND LOCAL LAWS AND ORDINANCES WILL BE COMPLIED WITH, IN THE CONSTRUCTION OF THIS PROJECT.

I HEREBY CERTIFY THAT THIS PLAN WAS PREPARED BY ME OR UNDER MY DIRECT SUPERVISION AND THAT I AM A DULY REGISTERED PROFESSIONAL ENGINEER UNDER THE LAWS OF THE STATE OF MINNESOTA.

Erling J. Lundhjem COUNTY ENGINEER DATE 11-30-59

ANOKA COUNTY REG. NO. 2551

RECOMMENDED FOR APPROVAL *Paul J. ...* DISTRICT ENGINEER 12/1/59

RECOMMENDED FOR APPROVAL *J. B. McMillan* 12/14, 1959

APPROVED *J. B. McMillan* STATE AID ENGINEER 12/14, 1959

DEPARTMENT OF COMMERCE
BUREAU OF PUBLIC ROADS

DISTRICT ENGINEER _____ DATE _____

Minn. Project No. S 7418(1) State Project No. 02-626-01

ANOKA County, Minnesota. County Proj. No. _____ Plan No. _____ Sheet 1 of 34 Sheets

SPECIFICATIONS
THE "SPECIFICATIONS FOR HIGHWAY CONSTRUCTION" DATED MAY 1, 1959, AND SUBMITTED FOR APPROVAL BY THE DIVISION ENGINEER OF THE BUREAU OF PUBLIC ROADS ON MARCH 26, 1959, SHALL GOVERN.

ESTIMATED QUANTITIES

SPECIFICATION NO.	ITEM	UNIT	TOTAL ESTIMATED QUANTITIES
2101.501	CLEARING	ACRE	7.2
2101.502	CLEARING	TREE	66
2101.506	GRUBBING	ACRE	13.5
2101.507	GRUBBING	TREE	133
2104.501	REMOVE PORTABLE CULV.	LIN. FT.	157
2104.510	REMOVE FENCE	LIN. FT.	20404
557.621	RESET FENCE	LIN. FT.	19409
2108.501	SPECIAL SWAMP EXCAVATION	CU. YD.	4167
2108.501	CLASS "A" EXCAVATION	CU. YD.	139657
2105.510	TOPSOIL COVERING	CU. YD.	119
2108.511	CHANNEL EXCAVATION (CLASS A)	CU. YD.	2735
2414.501	CATTLE PASS EXCAVATION	CU. YD.	84
2414.511	F&I P-C CONG. CATTLE PASS (60" HIGH)	LIN. FT.	32
2414.512	F&I P-C CONG. CATTLE PASS END SECT. (60" H.)	SECTION	2
2414.531	SAND- GRAVEL SUB-FOUNDATION	CU. YD. (VM)	39
2501.501	PIPE CULVERT EXCAVATION	CU. YD.	365
2501.511-15	F&I 15" C.M.P. CULV.	LIN. FT.	362
2501.511-18	F&I 18" C.M.P. CULV.	LIN. FT.	170
2501.511-24	F&I 24" C.M.P. CULV.	LIN. FT.	180
2501.511-36	F&I 36" C.M.P. CULV.	LIN. FT.	50
2501.511-48	F&I 48" C.M.P. CULV.	LIN. FT.	40
2501.521-24	F&I 24" SCR CULV. CLASS 3	LIN. FT.	244
2501.512-43	F&I 43" C.M.P. - A CULV.	LIN. FT.	3.6
501.681	SAND GRAVEL SUB-FOUNDATION	CU. YDS. (VM)	255
2515.531-18	F&I APRONS FOR 18" C.M.P. CULV.	APRON	2
2515-531-24	F&I APRONS FOR 24" C.M.P. CULV.	APRON	8
2515-531-36	F&I APRONS FOR 36" C.M.P. CULV.	APRON	2
2515-531-48	F&I APRONS FOR 48" C.M.P. CULV.	APRON	2
2515.541-24	F&I CONG. APRON FOR 24" SCR CULV.	APRON	8
2515.532	F&I APRONS FOR C.M.P. - A 43	APRON	2
* 2574.501	ROADSIDE SEEDING	ACRE	45
2575.501	SURFACE MULCHING TYPE 1 (7)	TON	43
2575.506	SURFACE MULCHING TYPE 6 (7)	GALLON	4300
2130.501	WATER	M-GALLON	138
2576.501	SODDING	SQ. YD.	1788
** 2123.503	MOTOR GRADER	HOUR	10

* COUNTY WILL FURNISH SEED ON PROJECT (60 LBS. PER ACRE)

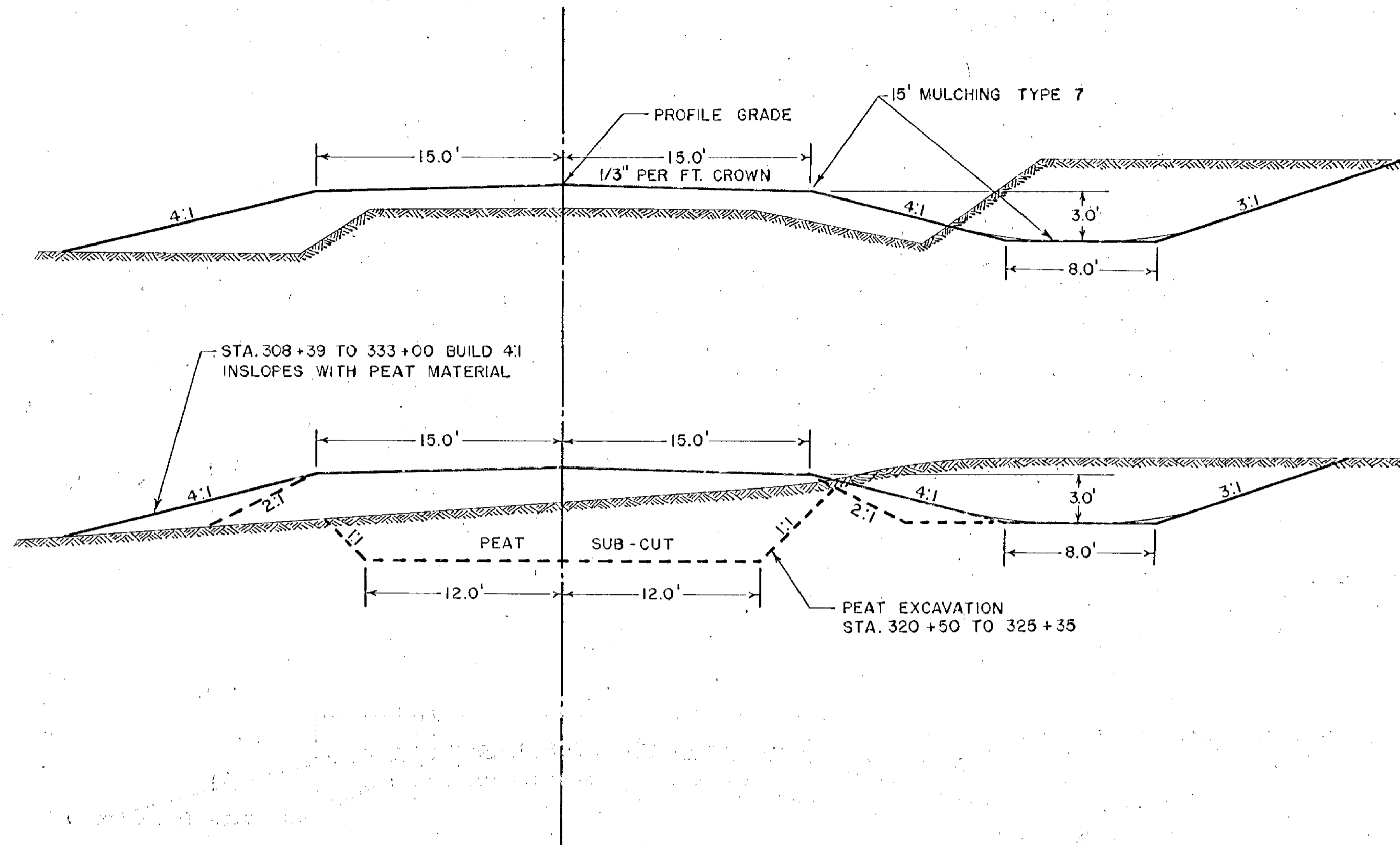
** FOR OBLITERATING OLD ROAD STA. 17+00 TO STA. 32+50 2575.501 AND 2575.506 TO BE USED FOR TYPE 7 MULCHING.

STANDARD DETAIL PLATES

THE FOLLOWING STANDARD DETAIL PLATES, APPROVED BY THE BUREAU OF PUBLIC ROADS, SHALL APPLY ON THIS PROJECT.

PLATE NO.	DESCRIPTION
2009	DEFORMED C.M.P.
3000 B	SCR CULV. CLASS 3
3016	METAL APRON
3021	PRE. CUST. CATTLE PASS
3102-A	CONG. APRON
8000A, 8001	STANDARD SIGNS & BARRICADES
8003, 8008A	STANDARD SIGNS & BARRICADES
9000	APPROACHES & ENTRANCES

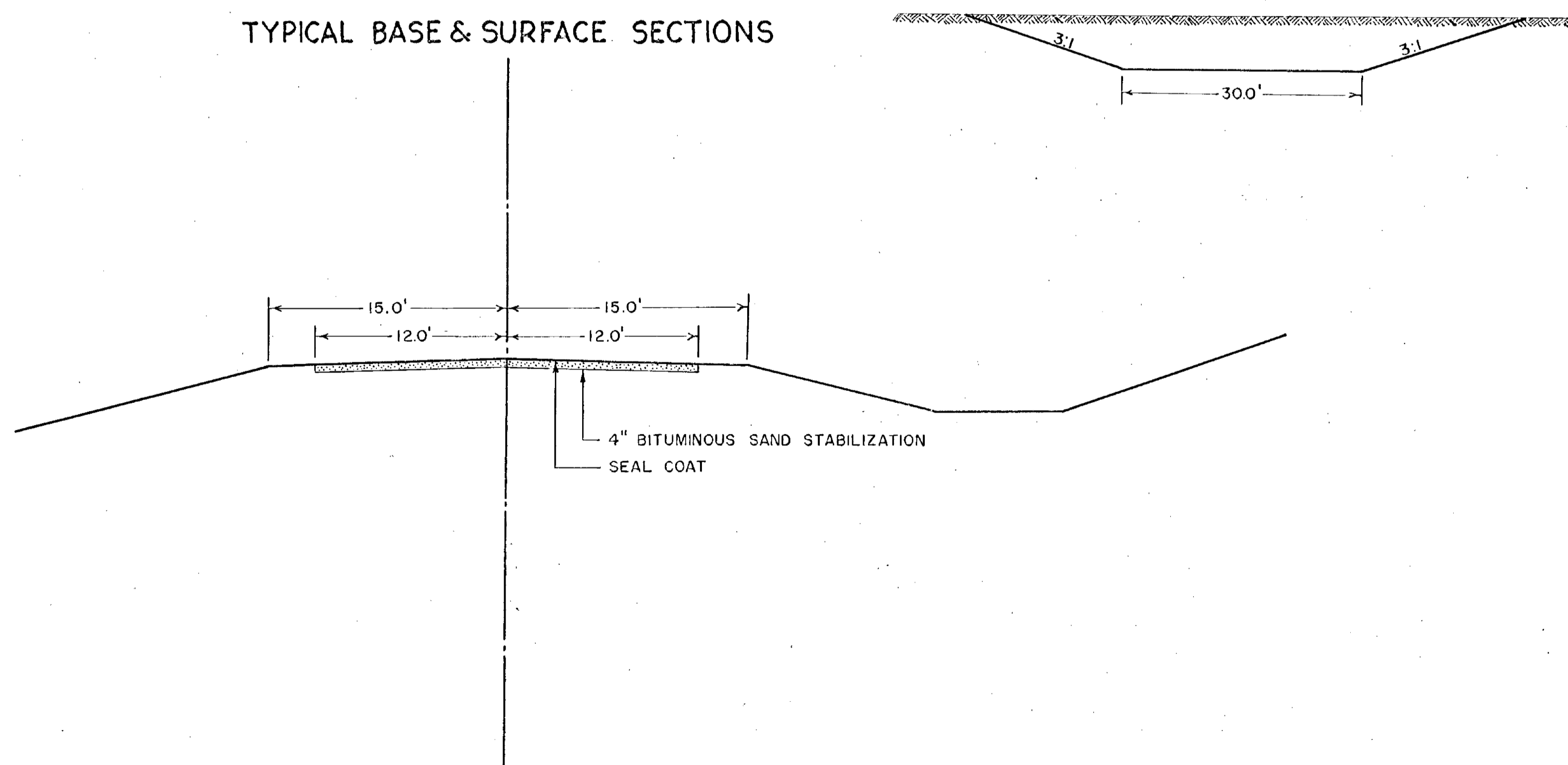
TYPICAL GRADING SECTIONS



SPECIAL DETAILS

ROADBED TO BE BLADED TO 1/3% PER FT. PITCH DURING FINISHING OPERATIONS.
 ALL CURVES SHALL BE SUPERELEVATED IN ACCORDANCE WITH DESIGN STANDARDS DURING CONSTRUCTION.
 THE UPPER 1.0' OF NATURAL SOIL IS CONSIDERED UNSUITABLE FOR USE IN THE UPPER 1.0' OF ROADWAY. THIS PORTION SHALL BE PLACED BELOW THE UPPER 1.0' OF THE EMBANKMENT DURING CONSTRUCTION.
 STA. 308+39 TO 333+00 BUILD ROAD INSLOPES AT A 2:1 SLOPE, COMPLETE TO 4:1 INSLOPE WITH PEAT EXCAVATION.

TYPICAL BASE & SURFACE SECTIONS



BM No. 1 SPIKE IN 15"
OAK 100' LT. STA. 0+00
ELEV. 90.53

BM No. 2 TOP AND NW
COR. CON. STEP 2-SF
LT. STA. 16+55 ELEV. 97.79

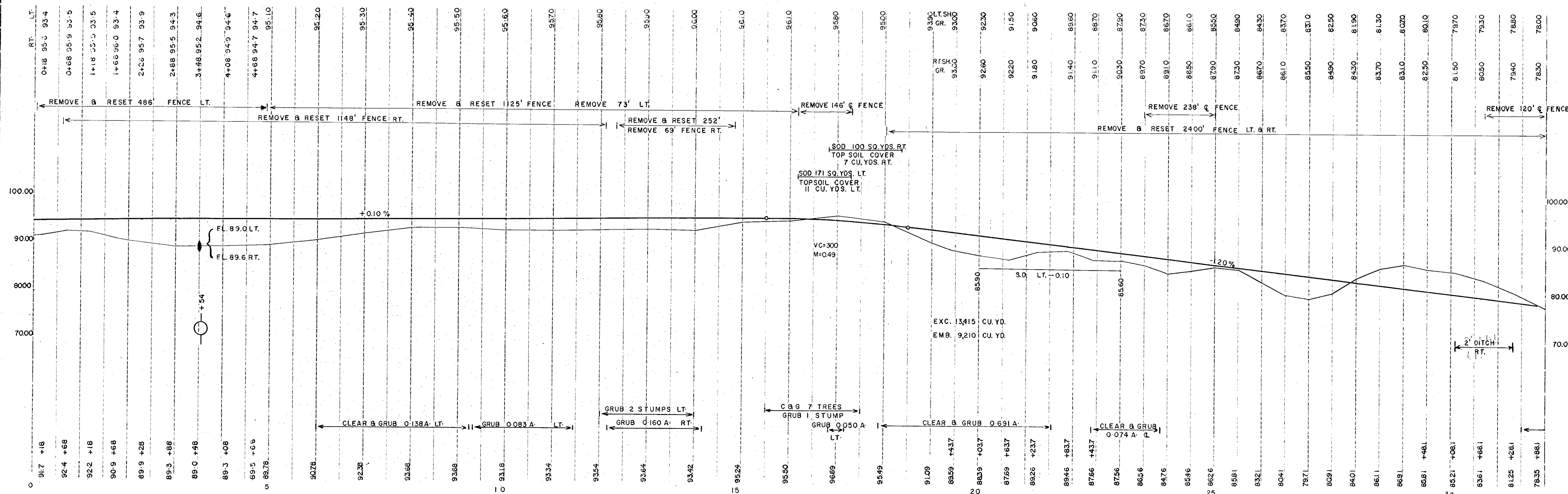
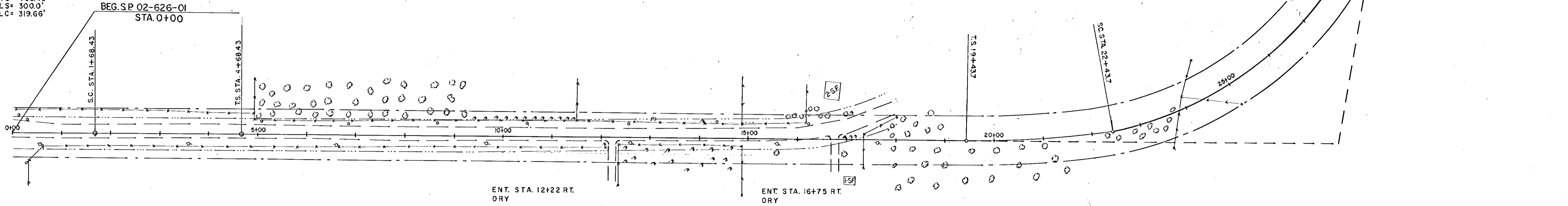
PI = 27+02.6
Δ = 80° 21' LT.
D = 8° 00'
TS = 758.9'
LS = 3000'
LC = 704.38'

STA. 4+00 C
F&I 24" X 52" S.C.P.
F&I 2-24" APRONS
PIPE CULV. EXC. 8 CU. YDS.

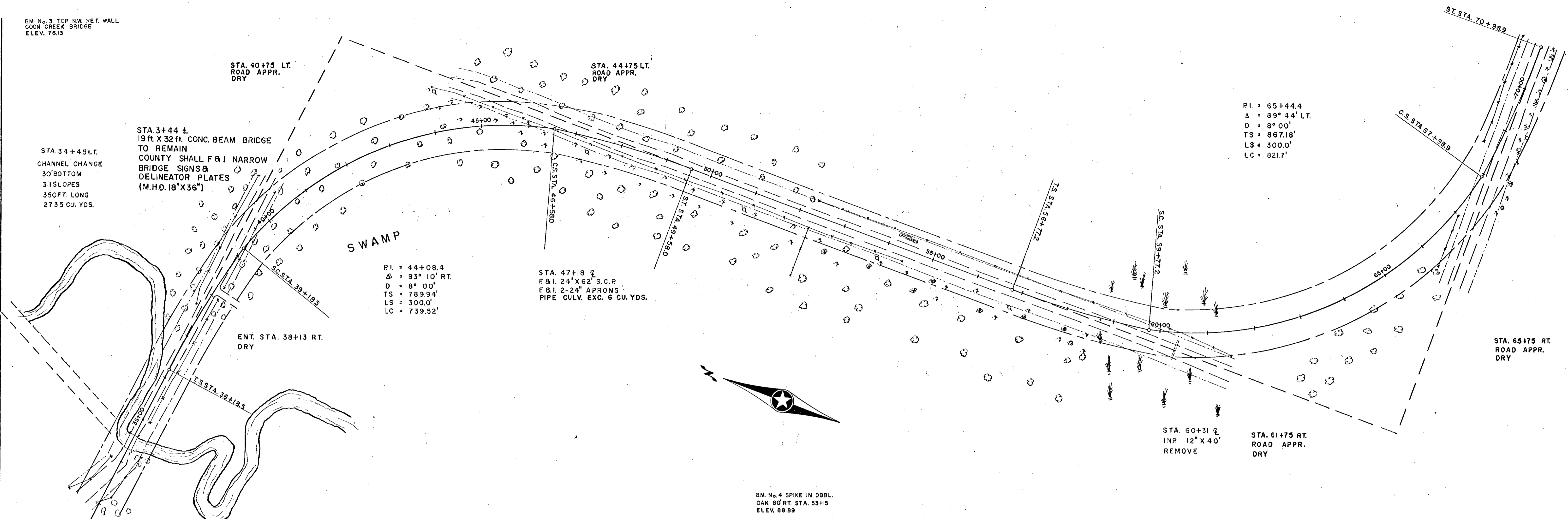
PI = STA. 0+00
Δ = 30° 59' LT.
D = 5° 00'
TS = 468.43'
LS = 3000'
LC = 319.66'

BEG. S.P. 02-626-01
STA. 0+00

STA. 20+03 C
F&I 4' X 5' X 32" PRECAST CONC.
CATTLE PASS 82 END SECTS.
CATTLE PASS EXC. 84 CU. YDS.
SAND GRAVEL SUBFOUNDATION 39 CU. YDS.



BM No. 3 TOP NW RET. WALL
COON CREEK BRIDGE
ELEV. 76.13

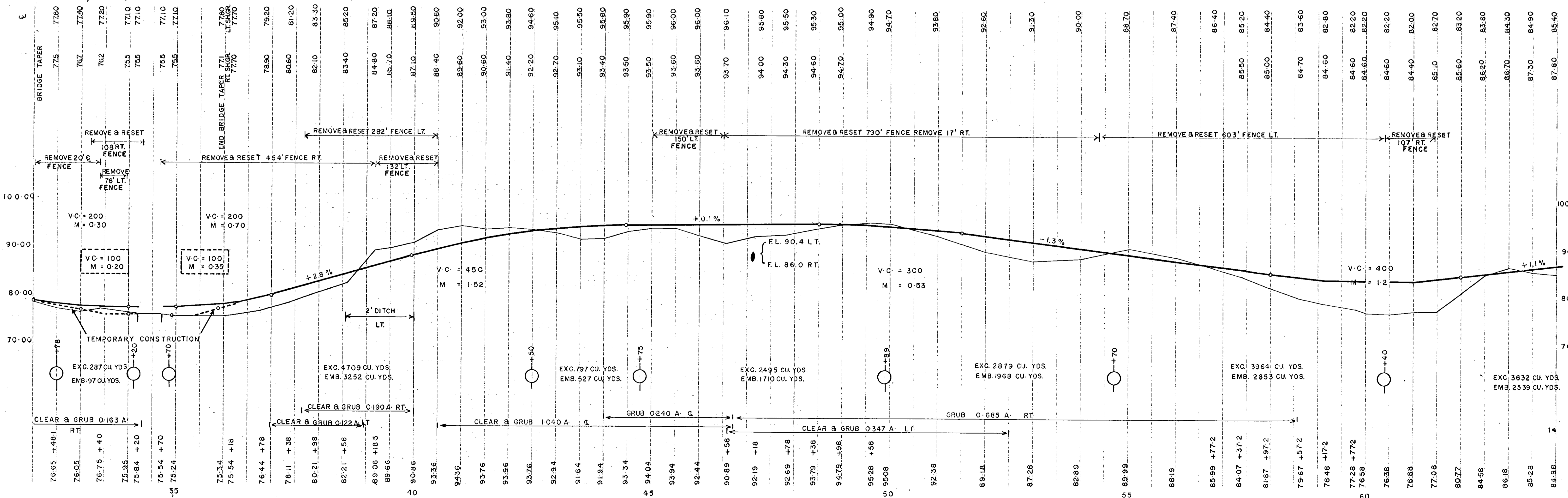


PI = 65+44.4
Δ = 89° 44' LT.
D = 8° 00'
TS = 867.18'
LS = 300.0'
LC = 8217'

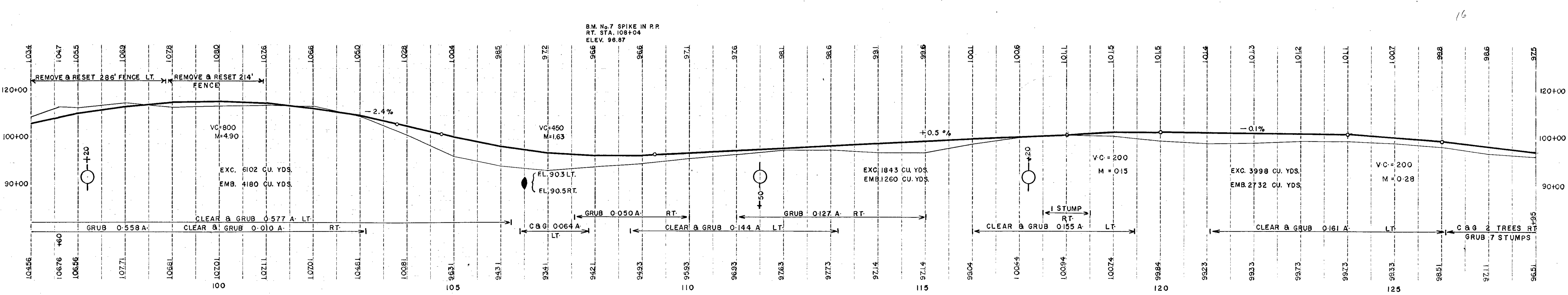
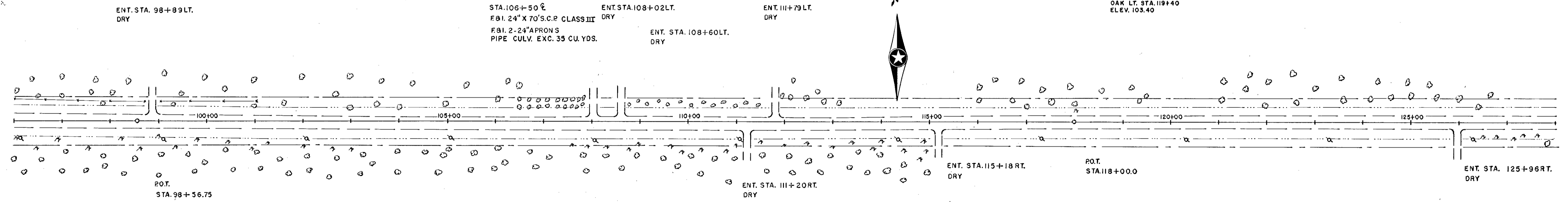
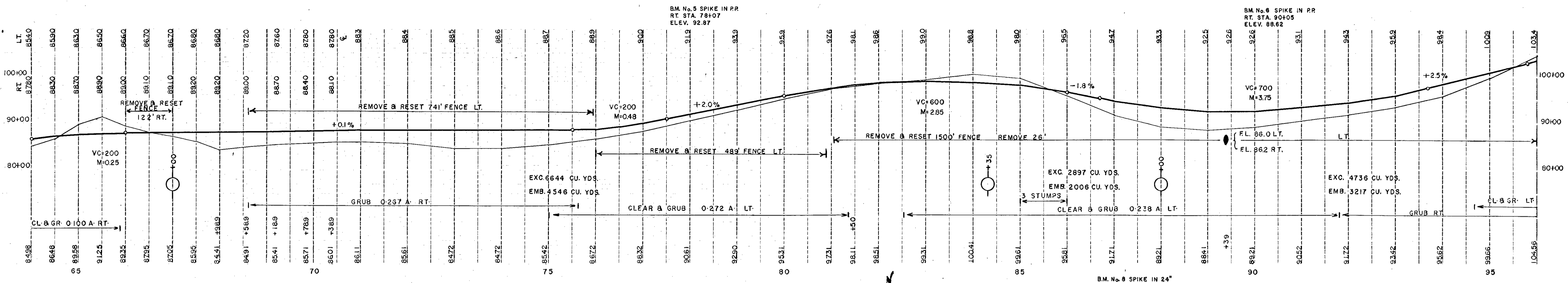
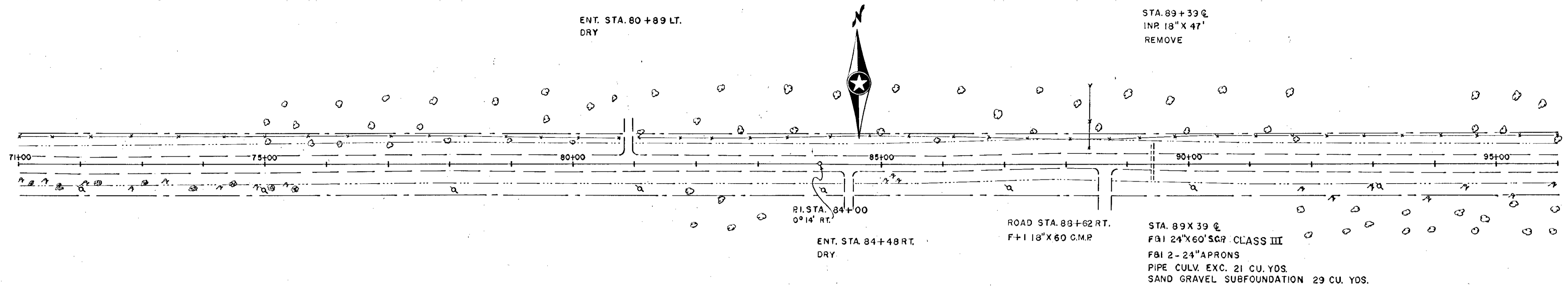
PI = 44+08.4
Δ = 83° 10' RT.
D = 8° 00'
TS = 789.94'
LS = 300.0'
LC = 739.52'

STA. 47+18 C.
F&I 24' X 62' S.C.P.
F&I 2-24" APRONS
PIPE CULV. EXC. 6 CU. YDS.

BM No. 4 SPIKE IN DBBL.
OAK 80' RT. STA. 53+15
ELEV. 88.89



DRAWING NO. 2-713
 DATE 10/15/54
 PROJECT
 STATE ROAD IMPROVEMENT DISTRICT
 COUNTY OF HARRIS, TEXAS
 SHEET NO. 5 OF 34 SHEETS



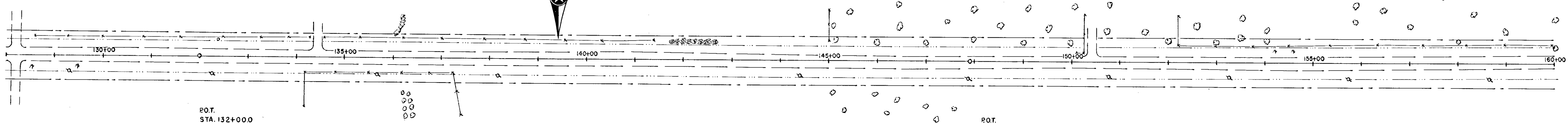
BM. No. 9 SPIKE IN PP.
RT. STA. 129+28
ELEV. 94.48

BM. No. 10 SPIKE IN DBBL. OAK
90' LT. ON FENCE LINE
STA. 152+45 ELEV. 99.07

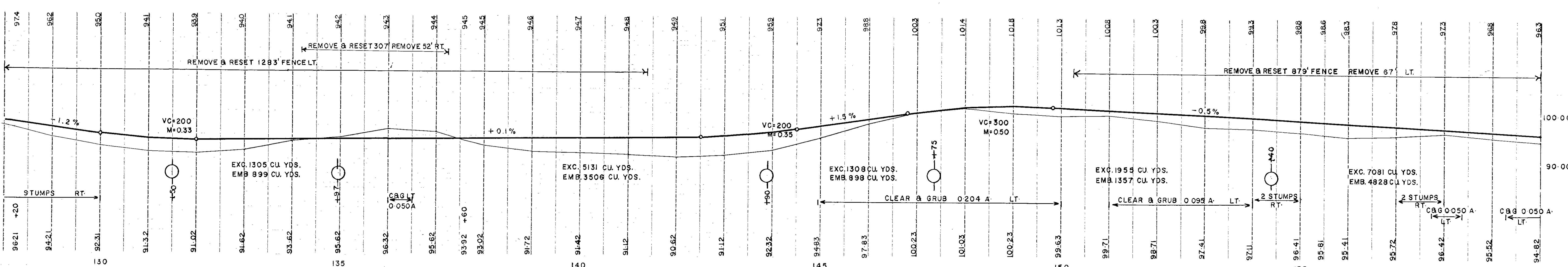
ENT. STA. 128+19 LT.
DRY

ENT. STA. 134+43 LT.
DRY

ENT. STA. 150+35 LT.
DRY



ENT. STA. 128+19 RT.
DRY

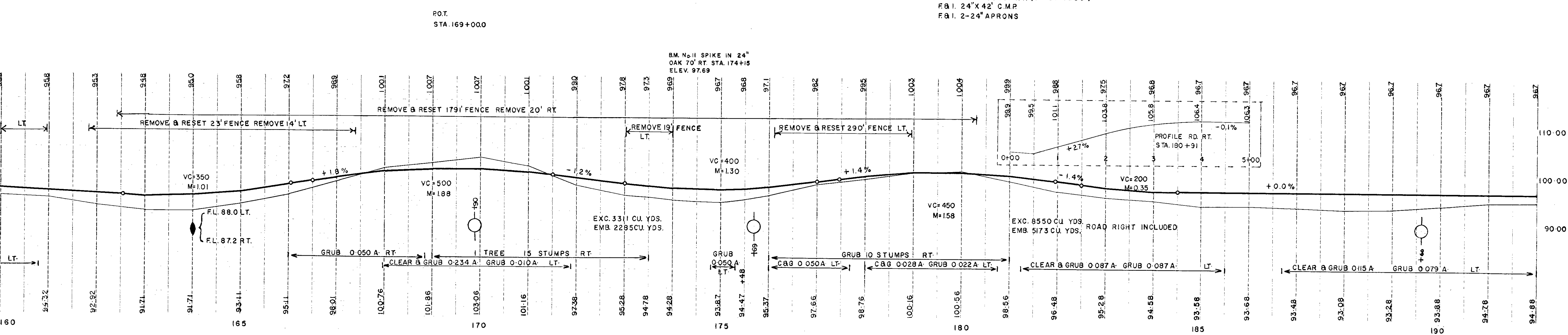
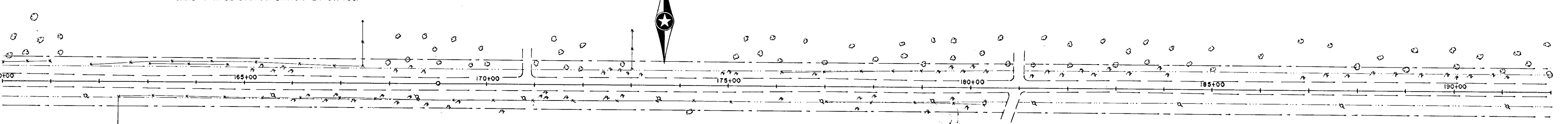


STA. 164+00 @
F&I. 18" X 72' C.M.P.
F&I. 2-18" APRONS
PIPE CULV. EXC. 30 CU. YDS.
SAND GRAVEL SUBFOUNDATION 24 CU. YDS.

ENT. STA. 170+81 LT.
DRY

ROAD STA. 180+99 LT.
DRY

BM. No. 12 SPIKE IN 24"
OAK 65' LT. STA. 186+
ELEV. 95.65

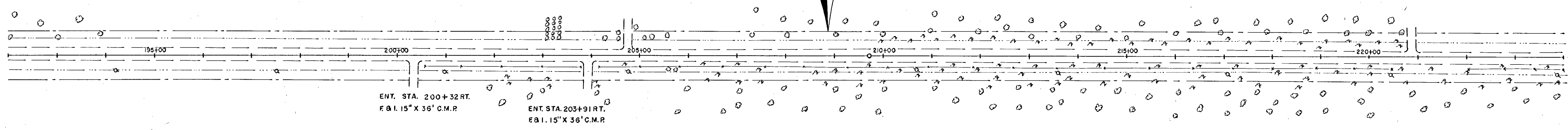


BM. No. 11 SPIKE IN 24"
OAK 70' RT. STA. 174+15
ELEV. 97.69

ROAD STA. 180+91 RT. (CONSTR. 500')
F&I. 24" X 42' C.M.P.
F&I. 2-24" APRONS

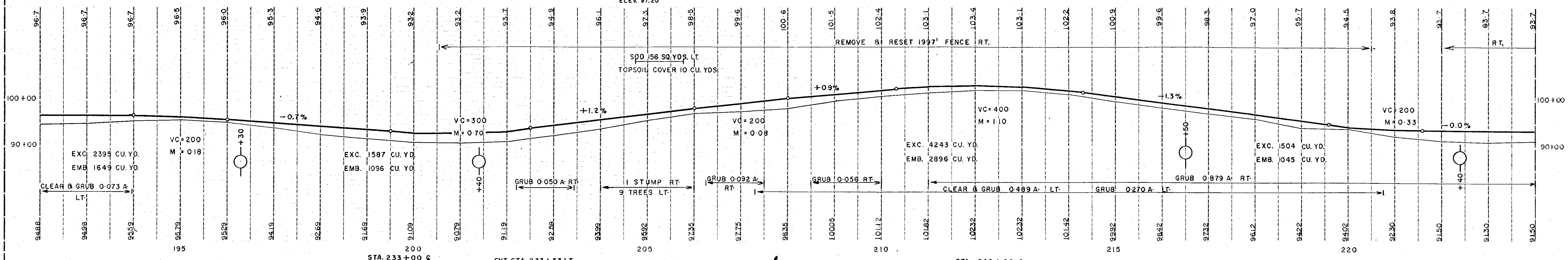
ENT. STA. 204+73 LT.
F&I 15"X36" C.M.P.

ENT. STA. 220+88 LT.
F&I 15"X36" C.M.P.



ROT. STA. 209+70.3

BM No. 13 SPIKE IN DBBL.
OAK RT. STA. 204+65
ELEV. 97.20



ENT. STA. 226+35 LT.
DRY

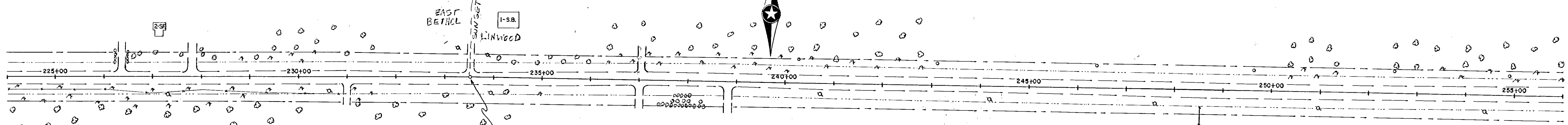
ENT. STA. 227+81 LT.
DRY

STA. 233+00 C
F&I 24"X42" G.M.P.
F&I 2-24" APRONS
PIPE CULV. EXC. 25 CU. YDS.
SAND GRAVEL SUBFOUNDATION 24 CU. YDS.

ENT. STA. 233+53 LT.
F&I 18"X38" C.M.P.

ENT. STA. 237+02 LT.
DRY

STA. 243+00 C
F&I 43"X36" PIPE ARCH C.M.P.
F&I 2X43" APRONS C.M.
PIPE CULV. EXC. 62 CU. YDS.
SAND GRAVEL SUBFOUNDATION 48 CU. YDS.



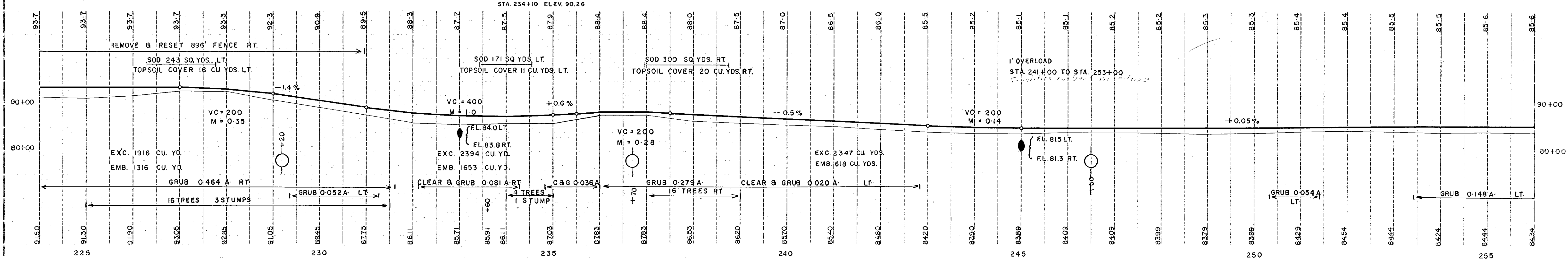
ENT. STA. 230+98 RT.
F&I 15"X36" C.M.P.

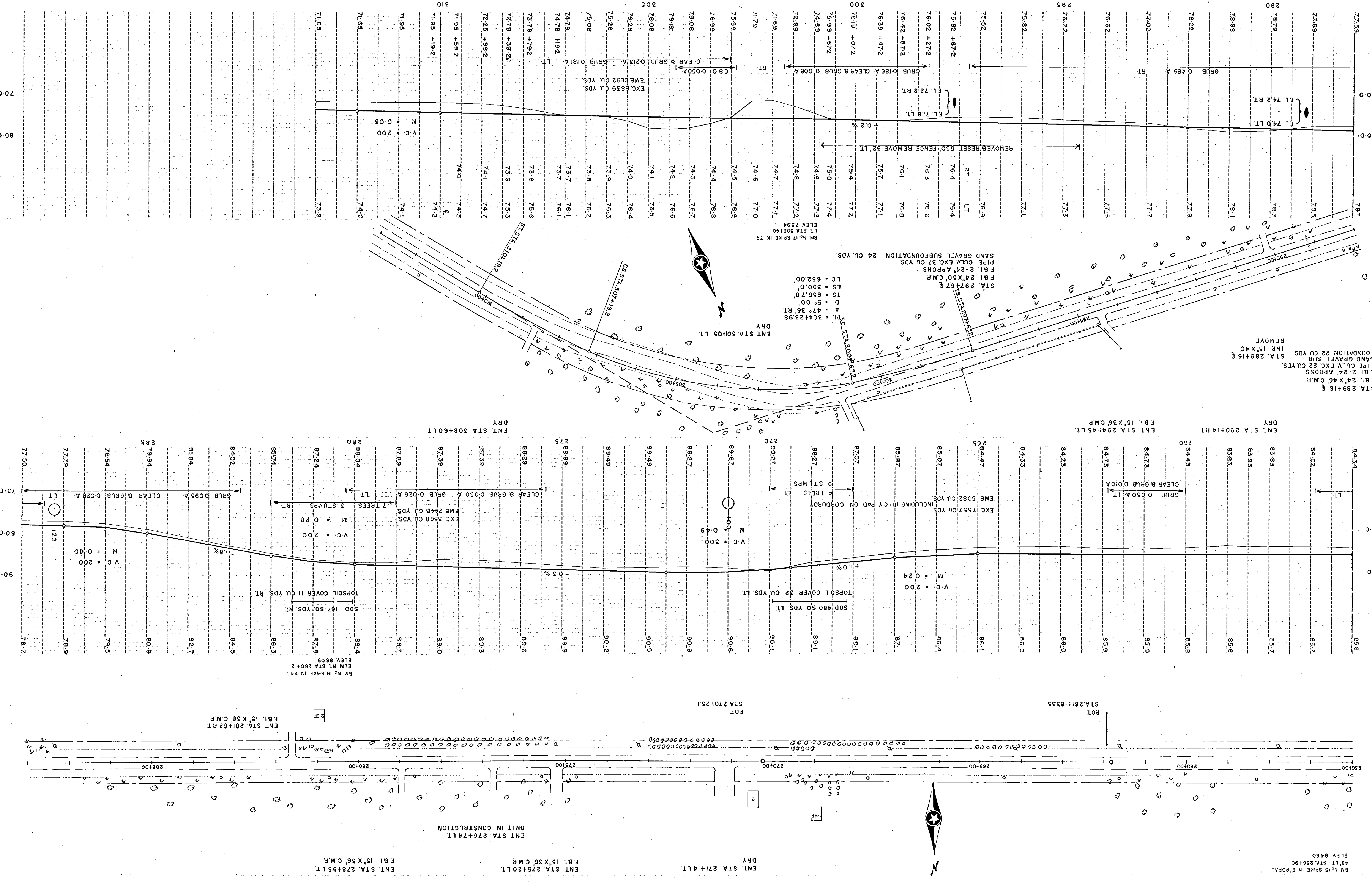
PI. STA. 233+52.25
18" RT.

ENT. STA. 237+00 RT.
DRY

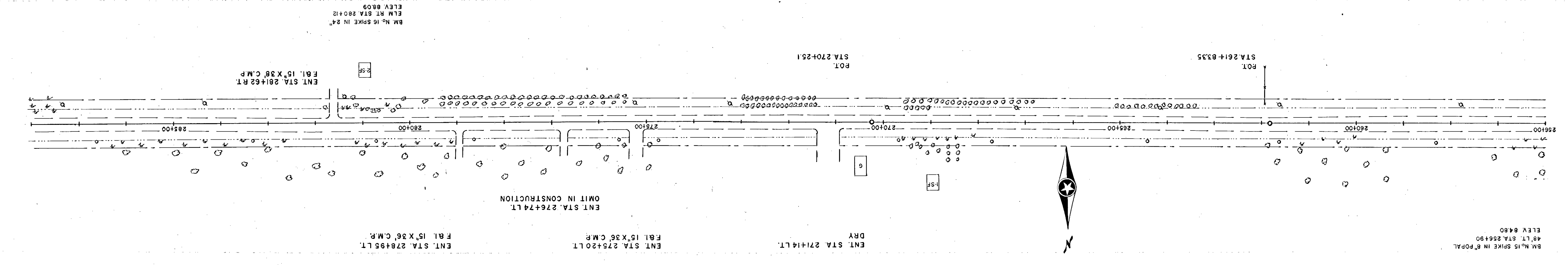
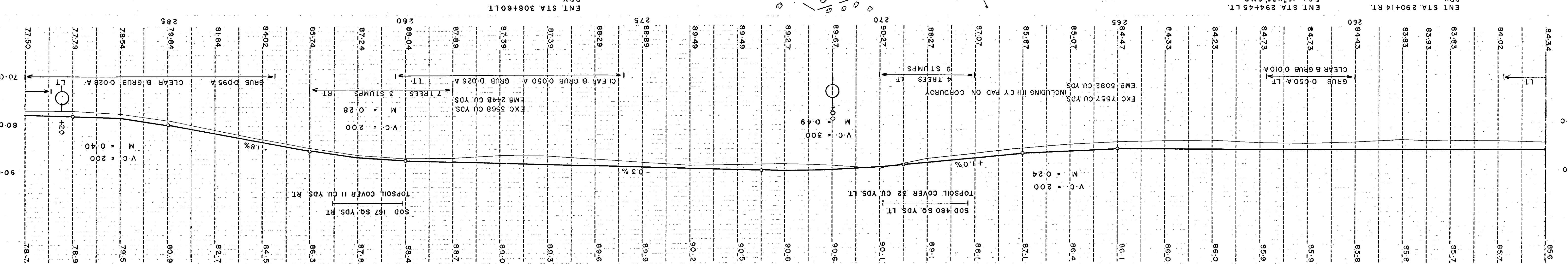
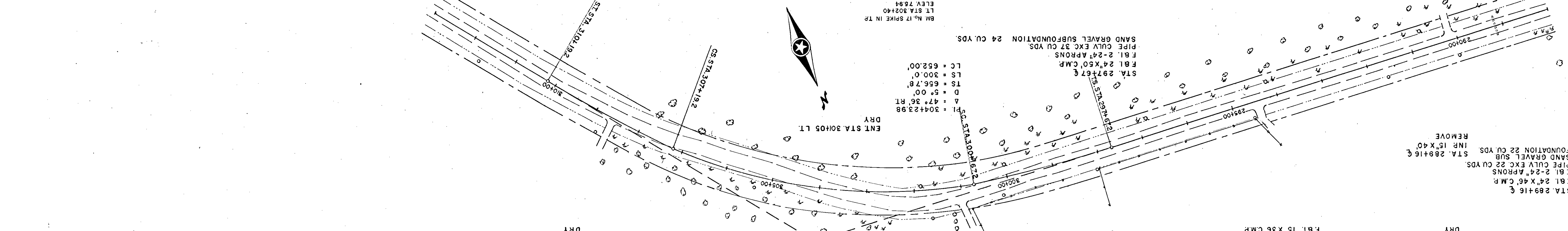
ENT. STA. 238+80 RT.
F&I 15"X36" C.M.P.

BM No. 14 TOP SW. COR.
BOTTOM STEP S.W. STEPS
STA. 234+10 ELEV. 90.26





275.59	78.7
274.69	78.5
273.79	78.3
272.89	78.1
271.99	77.9
271.09	77.7
270.19	77.5
269.29	77.3
268.39	77.1
267.49	76.9
266.59	76.7
265.69	76.5
264.79	76.3
263.89	76.1
262.99	75.9
262.09	75.7
261.19	75.5
260.29	75.3
259.39	75.1
258.49	74.9
257.59	74.7
256.69	74.5
255.79	74.3
254.89	74.1
253.99	73.9
253.09	73.7
252.19	73.5
251.29	73.3
250.39	73.1
249.49	72.9
248.59	72.7
247.69	72.5
246.79	72.3
245.89	72.1
244.99	71.9
244.09	71.7
243.19	71.5
242.29	71.3
241.39	71.1
240.49	70.9
239.59	70.7
238.69	70.5
237.79	70.3
236.89	70.1
235.99	69.9
235.09	69.7
234.19	69.5
233.29	69.3
232.39	69.1
231.49	68.9
230.59	68.7
229.69	68.5
228.79	68.3
227.89	68.1
226.99	67.9
226.09	67.7
225.19	67.5
224.29	67.3
223.39	67.1
222.49	66.9
221.59	66.7
220.69	66.5
219.79	66.3
218.89	66.1
217.99	65.9
217.09	65.7
216.19	65.5
215.29	65.3
214.39	65.1
213.49	64.9
212.59	64.7
211.69	64.5
210.79	64.3
209.89	64.1
208.99	63.9
208.09	63.7
207.19	63.5
206.29	63.3
205.39	63.1
204.49	62.9
203.59	62.7
202.69	62.5
201.79	62.3
200.89	62.1
199.99	61.9
199.09	61.7
198.19	61.5
197.29	61.3
196.39	61.1
195.49	60.9
194.59	60.7
193.69	60.5
192.79	60.3
191.89	60.1
190.99	59.9
190.09	59.7
189.19	59.5
188.29	59.3
187.39	59.1
186.49	58.9
185.59	58.7
184.69	58.5
183.79	58.3
182.89	58.1
181.99	57.9
181.09	57.7
180.19	57.5
179.29	57.3
178.39	57.1
177.49	56.9
176.59	56.7
175.69	56.5
174.79	56.3
173.89	56.1
172.99	55.9
172.09	55.7
171.19	55.5
170.29	55.3
169.39	55.1
168.49	54.9
167.59	54.7
166.69	54.5
165.79	54.3
164.89	54.1
163.99	53.9
163.09	53.7
162.19	53.5
161.29	53.3
160.39	53.1
159.49	52.9
158.59	52.7
157.69	52.5
156.79	52.3
155.89	52.1
154.99	51.9
154.09	51.7
153.19	51.5
152.29	51.3
151.39	51.1
150.49	50.9
149.59	50.7
148.69	50.5
147.79	50.3
146.89	50.1
145.99	49.9
145.09	49.7
144.19	49.5
143.29	49.3
142.39	49.1
141.49	48.9
140.59	48.7
139.69	48.5
138.79	48.3
137.89	48.1
136.99	47.9
136.09	47.7
135.19	47.5
134.29	47.3
133.39	47.1
132.49	46.9
131.59	46.7
130.69	46.5
129.79	46.3
128.89	46.1
127.99	45.9
127.09	45.7
126.19	45.5
125.29	45.3
124.39	45.1
123.49	44.9
122.59	44.7
121.69	44.5
120.79	44.3
119.89	44.1
118.99	43.9
118.09	43.7
117.19	43.5
116.29	43.3
115.39	43.1
114.49	42.9
113.59	42.7
112.69	42.5
111.79	42.3
110.89	42.1
109.99	41.9
109.09	41.7
108.19	41.5
107.29	41.3
106.39	41.1
105.49	40.9
104.59	40.7
103.69	40.5
102.79	40.3
101.89	40.1
100.99	39.9
100.09	39.7
99.19	39.5
98.29	39.3
97.39	39.1
96.49	38.9
95.59	38.7
94.69	38.5
93.79	38.3
92.89	38.1
91.99	37.9
91.09	37.7
90.19	37.5
89.29	37.3
88.39	37.1
87.49	36.9
86.59	36.7
85.69	36.5
84.79	36.3
83.89	36.1
82.99	35.9
82.09	35.7
81.19	35.5
80.29	35.3
79.39	35.1
78.49	34.9
77.59	34.7
76.69	34.5
75.79	34.3
74.89	34.1
73.99	33.9
73.09	33.7
72.19	33.5
71.29	33.3
70.39	33.1
69.49	32.9
68.59	32.7
67.69	32.5
66.79	32.3
65.89	32.1
64.99	31.9
64.09	31.7
63.19	31.5
62.29	31.3
61.39	31.1
60.49	30.9
59.59	30.7
58.69	30.5
57.79	30.3
56.89	30.1
55.99	29.9
55.09	29.7
54.19	29.5
53.29	29.3
52.39	29.1
51.49	28.9
50.59	28.7
49.69	28.5
48.79	28.3
47.89	28.1
46.99	27.9
46.09	27.7
45.19	27.5
44.29	27.3
43.39	27.1
42.49	26.9
41.59	26.7
40.69	26.5
39.79	26.3
38.89	26.1
37.99	25.9
37.09	25.7
36.19	25.5
35.29	25.3
34.39	25.1
33.49	24.9
32.59	24.7
31.69	24.5
30.79	24.3
29.89	24.1
28.99	23.9
28.09	23.7
27.19	23.5
26.29	23.3
25.39	23.1
24.49	22.9
23.59	22.7
22.69	22.5
21.79	22.3
20.89	22.1
19.99	21.9
19.09	21.7
18.19	21.5
17.29	21.3
16.39	21.1
15.49	20.9
14.59	20.7
13.69	20.5
12.79	20.3
11.89	20.1
10.99	19.9
10.09	19.7
9.19	19.5
8.29	19.3
7.39	19.1
6.49	18.9
5.59	18.7
4.69	18.5
3.79	18.3
2.89	18.1
1.99	17.9
1.09	17.7
0.19	17.5
0.29	17.3
0.39	17.1
0.49	16.9
0.59	16.7
0.69	16.5
0.79	16.3
0.89	16.1
0.99	15.9
1.09	15.7
1.19	15.5
1.29	15.3
1.39	15.1
1.49	14.9
1.59	14.7
1.69	14.5
1.79	14.3
1.89	14.1
1.99	13.9
2.09	13.7
2.19	13.5
2.29	13.3
2.39	13.1
2.49	12.9
2.59	12.7
2.69	12.5
2.79	12.3
2.89	12.1
2.99	11.9
3.09	11.7
3.19	11.5
3.29	11.3
3.39	11.1
3.49	10.9
3.59	10.7
3.69	10.5
3.79	10.3
3.89	10.1
3.99	9.9
4.09	9.7
4.19	9.5
4.29	9.3
4.39	9.1
4.49	8.9
4.59	8.7
4.69	8.5
4.79	8.3
4.89	8.1
4.99	7.9
5.09	7.7
5.19	7.5
5.29	7.3
5.39	7.1
5.49	6.9
5.59	6.7
5.69	6.5
5.79	6.3
5.89	6.1
5.99	5.9
6.09	5.7
6.19	5.5
6.29	5.3
6.39	5.1
6.49	4.9
6.59	4.7
6.69	4.5
6.79	4.3
6.89	4.1
6.99	3.9
7.09	3.7
7.19	3.5
7.29	3.3
7.39	3.1
7.49	2.9
7.59	2.7
7.69	2.5
7.79	2.3
7.89	2.1
7.99	1.9
8.09	1.7
8.19	1.5
8.29	1.3
8.39	1.1
8.49	0.9
8.59	0.7
8.69	0.5
8.79	0.3
8.89	0.1
8.99	0.0
9.09	0.0
9.19	0.0
9.29	0.0
9.39	0.0
9.49	0.0
9.59	0.0
9.69	0.0
9.79	0.0
9.89	0.0
9.99	0.0
10.09	0.0



STA. 314+85 @
 INP. 38" X 30"
 REMOVE

PI=321.0016
 Δ 449°06' LT.
 D=5°00'
 TS 674.84'
 LS 300.0'
 LC 682.00'

STA. 314+85 @
 F&I 48" X 40" CMP
 F&I 2-48" APRONS
 PIPE CULV. EXC. 62 CU. YDS.
 SAND GRAVEL SUBFOUNDATION 45 CU. YDS.

ENT. STA. 330+23 LT.
 DRY

ENT. STA. 331+86 LT.
 DRY

STA. 333+00 @
 F&I 36" X 50" CMP
 F&I 2-36" APRONS
 PIPE CULV. EXC. 57 CU. YDS.
 SAND GRAVEL SUBFOUNDATION 39 CU. YDS.

END. S.P. 02-626-01
 STA. 345+00

BM#18 SPIKE IN
 ROOT 8" OAK 70' RT.
 STA. 320+50 ELEV. 74.85

BM#19 TOP SW COR. BOTTOM
 STEP CHURCH ELEV. 87.61

