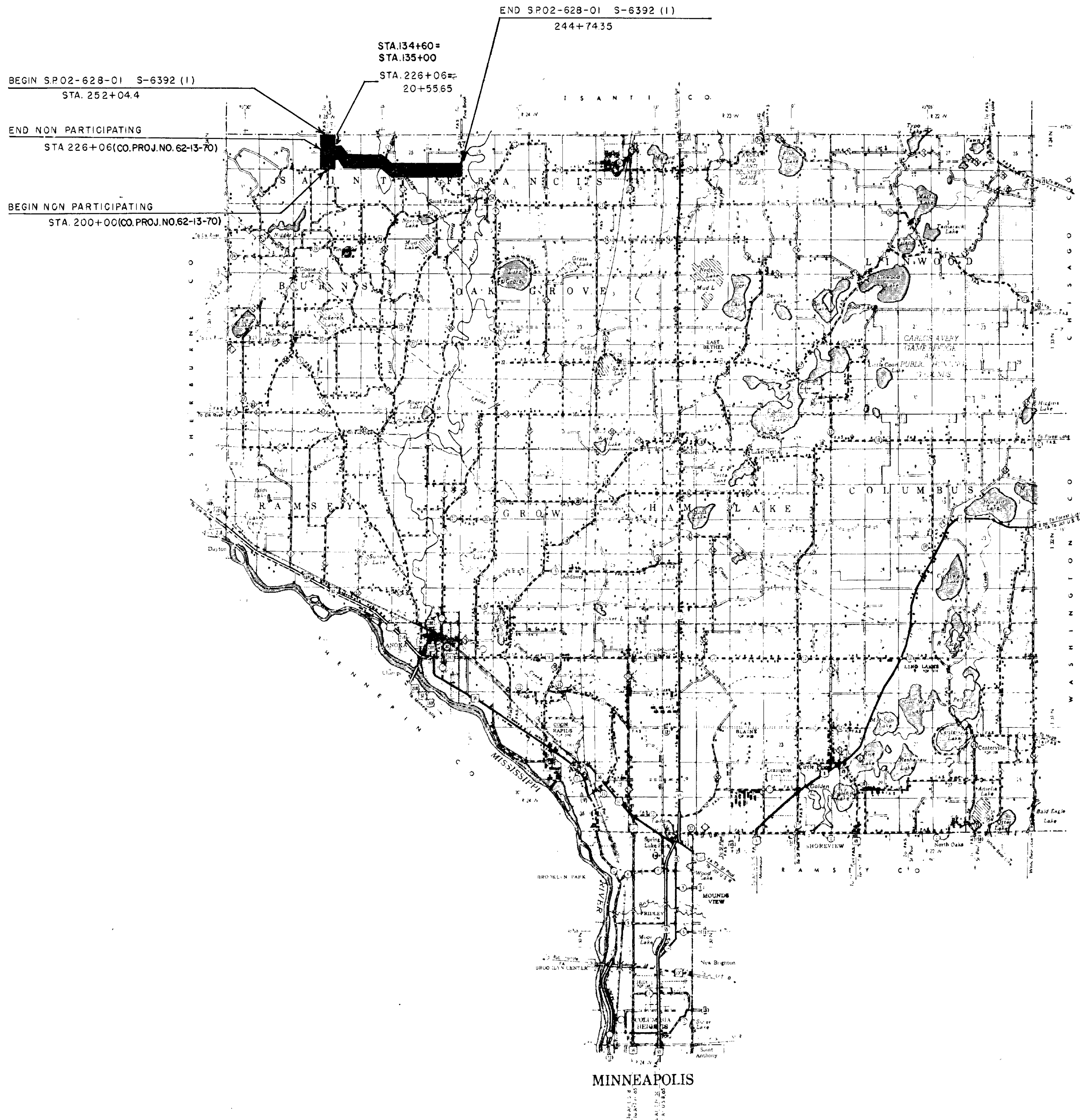
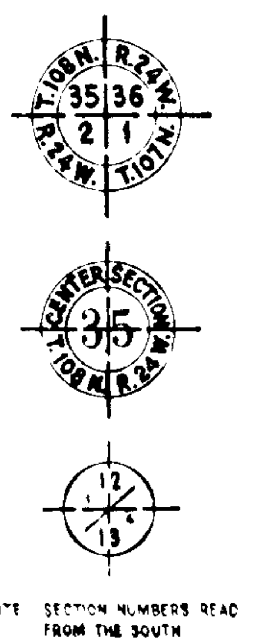


CONVENTIONAL SIGNS

STATE LINE	---	NO. 1	
COUNTY LINE	---	NO. 2	
TOWNSHIP OR RANGE LINE	---	NO. 3	
SECTION LINE	---	NO. 4	
QUARTER LINE	---	NO. 5	
SIXTEENTH LINE	---	NO. 6	
RIGHT OF WAY LINE	---	NO. 7	
PRESENT ROAD "W" LINE	---	NO. 8	
LIMITED ACCESS	---	NO. 9	
PROPERTY LINE (TOP AND BOTTOM PLANTED BUSHES)	---	NO. 10	
CORPORATE OR CITY LIMITS	---	NO. 11	
"ROAD HIGHWAY CENTER" LINE	---	NO. 12	
RETAINING WALL	---	NO. 13	
STEAM RAILROAD	---	NO. 14	
ELECTRIC RAILROAD	---	NO. 15	
RAILROAD RIGHT OF WAY LINE	---	NO. 16	
RAILROAD CROSSING	---	NO. 17	
RAILROAD CROSSING SIGNAL	---	NO. 18	
RAILROAD CROSSING SIGNAL	---	NO. 19	
RAILROAD CROSSING SIGNAL	---	NO. 20	
RAILROAD CROSSING SIGNAL	---	NO. 21	
RAILROAD CROSSING SIGNAL	---	NO. 22	
RAILROAD CROSSING SIGNAL	---	NO. 23	
RAILROAD CROSSING SIGNAL	---	NO. 24	
RAILROAD CROSSING SIGNAL	---	NO. 25	
RAILROAD CROSSING SIGNAL	---	NO. 26	
RAILROAD CROSSING SIGNAL	---	NO. 27	
RAILROAD CROSSING SIGNAL	---	NO. 28	
RAILROAD CROSSING SIGNAL	---	NO. 29	
RAILROAD CROSSING SIGNAL	---	NO. 30	
RAILROAD CROSSING SIGNAL	---	NO. 31	
RAILROAD CROSSING SIGNAL	---	NO. 32	
RAILROAD CROSSING SIGNAL	---	NO. 33	
RAILROAD CROSSING SIGNAL	---	NO. 34	
RAILROAD CROSSING SIGNAL	---	NO. 35	
RAILROAD CROSSING SIGNAL	---	NO. 36	
RAILROAD CROSSING SIGNAL	---	NO. 37	
RAILROAD CROSSING SIGNAL	---	NO. 38	
RAILROAD CROSSING SIGNAL	---	NO. 39	
RAILROAD CROSSING SIGNAL	---	NO. 40	
RAILROAD CROSSING SIGNAL	---	NO. 41	
RAILROAD CROSSING SIGNAL	---	NO. 42	
RAILROAD CROSSING SIGNAL	---	NO. 43	
RAILROAD CROSSING SIGNAL	---	NO. 44	
RAILROAD CROSSING SIGNAL	---	NO. 45	
RAILROAD CROSSING SIGNAL	---	NO. 46	
RAILROAD CROSSING SIGNAL	---	NO. 47	
RAILROAD CROSSING SIGNAL	---	NO. 48	
RAILROAD CROSSING SIGNAL	---	NO. 49	
RAILROAD CROSSING SIGNAL	---	NO. 50	
RAILROAD CROSSING SIGNAL	---	NO. 51	
RAILROAD CROSSING SIGNAL	---	NO. 52	
RAILROAD CROSSING SIGNAL	---	NO. 53	
RAILROAD CROSSING SIGNAL	---	NO. 54	
RAILROAD CROSSING SIGNAL	---	NO. 55	
RAILROAD CROSSING SIGNAL	---	NO. 56	
RAILROAD CROSSING SIGNAL	---	NO. 57	
RAILROAD CROSSING SIGNAL	---	NO. 58	
RAILROAD CROSSING SIGNAL	---	NO. 59	
RAILROAD CROSSING SIGNAL	---	NO. 60	
RAILROAD CROSSING SIGNAL	---	NO. 61	
RAILROAD CROSSING SIGNAL	---	NO. 62	
RAILROAD CROSSING SIGNAL	---	NO. 63	
RAILROAD CROSSING SIGNAL	---	NO. 64	
RAILROAD CROSSING SIGNAL	---	NO. 65	
RAILROAD CROSSING SIGNAL	---	NO. 66	
RAILROAD CROSSING SIGNAL	---	NO. 67	
RAILROAD CROSSING SIGNAL	---	NO. 68	
RAILROAD CROSSING SIGNAL	---	NO. 69	
RAILROAD CROSSING SIGNAL	---	NO. 70	
RAILROAD CROSSING SIGNAL	---	NO. 71	
RAILROAD CROSSING SIGNAL	---	NO. 72	
RAILROAD CROSSING SIGNAL	---	NO. 73	
RAILROAD CROSSING SIGNAL	---	NO. 74	
RAILROAD CROSSING SIGNAL	---	NO. 75	
RAILROAD CROSSING SIGNAL	---	NO. 76	
RAILROAD CROSSING SIGNAL	---	NO. 77	
RAILROAD CROSSING SIGNAL	---	NO. 78	
RAILROAD CROSSING SIGNAL	---	NO. 79	
RAILROAD CROSSING SIGNAL	---	NO. 80	
RAILROAD CROSSING SIGNAL	---	NO. 81	
RAILROAD CROSSING SIGNAL	---	NO. 82	
RAILROAD CROSSING SIGNAL	---	NO. 83	
RAILROAD CROSSING SIGNAL	---	NO. 84	
RAILROAD CROSSING SIGNAL	---	NO. 85	
RAILROAD CROSSING SIGNAL	---	NO. 86	
RAILROAD CROSSING SIGNAL	---	NO. 87	
RAILROAD CROSSING SIGNAL	---	NO. 88	
RAILROAD CROSSING SIGNAL	---	NO. 89	
RAILROAD CROSSING SIGNAL	---	NO. 90	
RAILROAD CROSSING SIGNAL	---	NO. 91	
RAILROAD CROSSING SIGNAL	---	NO. 92	
RAILROAD CROSSING SIGNAL	---	NO. 93	
RAILROAD CROSSING SIGNAL	---	NO. 94	
RAILROAD CROSSING SIGNAL	---	NO. 95	
RAILROAD CROSSING SIGNAL	---	NO. 96	
RAILROAD CROSSING SIGNAL	---	NO. 97	
RAILROAD CROSSING SIGNAL	---	NO. 98	
RAILROAD CROSSING SIGNAL	---	NO. 99	
RAILROAD CROSSING SIGNAL	---	NO. 100	



STATE OF MINNESOTA
DEPARTMENT OF HIGHWAYS
CONSTRUCTION PLAN FOR
County State Aid Highway No. 28

BETWEEN ISANTI COUNTY LINE AND T.H. NO. 47
From N.W. COR. SEC. 27, T. 34N, R. 25W To N.E. COR. SEC. 31, T. 34N, R. 24W

GROSS LENGTH	24,977.1 FEET 4.731 MILES
BRIDGES LENGTH	26 FEET 0.005 MILES
EXCEPTIONS LENGTH	26 FEET 0.005 MILES
NET LENGTH	24,951.1 FEET 4.726 MILES

DESIGN SPEED
50 MPH.

SCALES

Plan	1 inch = 100 Feet
PROFILE	Horz. 1 inch = 100 Feet Vert. 1 inch = 10 Feet
WORKING PLANS	Horz. 1 inch = 100 Feet Vert. 1 inch = 10 Feet
Cross Section	1 inch = 10 FEET
LAYOUT	Scale 1 inch = 100 Feet

NON PARTICIPATING (COUNTY PROJECT 62-13-70)

GROSS LENGTH	2606 FEET 0.494 MILES
EXCEPTIONS	NONE
NET LENGTH	2606 FEET 0.494 MILES

MINN. PROJ. S-6392 (1)

FROM SW. COR. SEC. 27, T34N, R25W
TO W/4 COR. SEC. 27, T34N, R25W

INDEX OF SHEETS

Sheet No. 1	Title Sheet & Layout Map
No. 2	Est. Quantities & Typical Sec.
No. 3 To 9	Plan & Profile
No. 10 To 31	Cross Sections

SPECIFICATIONS
THE "SPECIFICATIONS FOR HIGHWAY CONSTRUCTION" DATED MAY 1, 1959, AND SUBMITTED FOR APPROVAL BY THE DIVISION ENGINEER OF THE BUREAU OF PUBLIC ROADS ON MARCH 26, 1959, SHALL GOVERN.

ALL APPLICABLE FEDERAL, STATE AND LOCAL LAWS AND ORDINANCES WILL BE COMPLIED WITH, CONSTRUCTION OF THIS PROJECT.

HEREBY CERTIFY THAT THIS PLAN WAS PREPARED BY ME OR UNDER MY DIRECT SUPERVISION AND I AM A DULY REGISTERED PROFESSIONAL ENGINEER UNDER THE LAWS OF THE STATE OF MINNESOTA.

Erling J. Lundheim DATE 2-7-62
ANOKA COUNTY REG. NO. 2551
RECOMMENDED FOR APPROVAL *Edgar C. Pearson* 2-8
DIRECT ENGINEER
RECOMMENDED FOR APPROVAL *J. S. McMillan* 3/13
APPROVED *J. S. McMillan* 3/13 1962
STATE AID ENGINEER

MICRO-FILMED

Minn. Project No. S-6392 (1) State Project No. 02-628-01

Anoka County, Minnesota. County Proj. No. Plan No. Sheet 1 of 31

ESTIMATED QUANTITIES

SPECIFICATION NO.	ITEM	UNIT	C.R.# 70 NON PARTICIPATING	CSAH # 28 F.A.S.	TOTAL ESTIMATED QUANTITIES
2101.501	CLEARING	ACRE	.20	8.90	7.10
2101.502	CLEARING	TREE	0	41	41
2101.506	GRUBBING	ACRE	.15	8.30	8.45
2101.507	GRUBBING	TREE	0	55	55
2104.501	REMOVE PORTABLE CULV.	LIN. FT.	117	500	617
2104.510	REMOVE FENCE	LIN. FT.	135	9,051	9,186
557.621	RESET FENCE	LIN. FT.	85	8,924	3,009
2104.508	REMOVE SIDEWALK	SQ. YD.	0	11	11
2105.501	CLASS "A" EXC.	CU. YD.	7,215	102,062	109,277
2105.508	BORROW EXC. CLASS "A"	CU. YDS.	2,700	11,833	14,533
2501.501	PIPE CULV. EXC.	CU. YD.	57	692	749
2501.511-15	F&I. 15" C.M.P. CULV.	LIN. FT.	36	930	966
2501.511-18	F&I. 18" C.M.P. CULV.	LIN. FT.	184	530	714
2501.521-24	F&I. 24" S.C.P. CULV. CL. II	LIN. FT.	0	96	96
2501.521-36	F&I. 36" S.C.P. CULV. CL. II	LIN. FT.	0	158	158
2501.521-48	F&I. 48" S.C.P. CULV. CL. II	LIN. FT.	0	52	52
2501.522-44	F&I. 44" S.C.P. ARCH CULV. CL. IV	LIN. FT.	32	100	132
* 2501.536	INSTALL S.C. CULV.	LIN. FT.	0	74	74
501.631	SAND GRAVEL SUB FOUNDATION	CU. YDS. (V.M.)	35	599	634
2515.541-24	F&I. APRONS 24" S.C.P. CULV.	APRON	0	4	4
2515.541-36	F&I. APRONS 36" S.C.P. CULV.	APRON	0	8	8
2515.541-48	F&I. APRONS 48" S.C.P. CULV.	APRON	0	2	2
2515.542-44	F&I. APRONS 44" S.C.P. ARCH CULV.	APRON	2	6	8
** 2574.501	ROAD SIDE SEEDING	ACRE	3.	39.	42
2575.501	SURFACE MULCHING TYPE I (7)	TON	2.15	22.5	24.65
2575.506	SURFACE MULCHING TYPE G (7)	GALLON	215	2250	2465
2130.501	WATER FOR MULCH	M-GALLON	8	73	81
2130.501	WATER FOR COMPACTING SUBGRADE	M-GALLON	70	338	408
2123.503	MOTOR GRADER	HOUR	0	16	16
2123.509	DOZER	HOUR	0	8	8

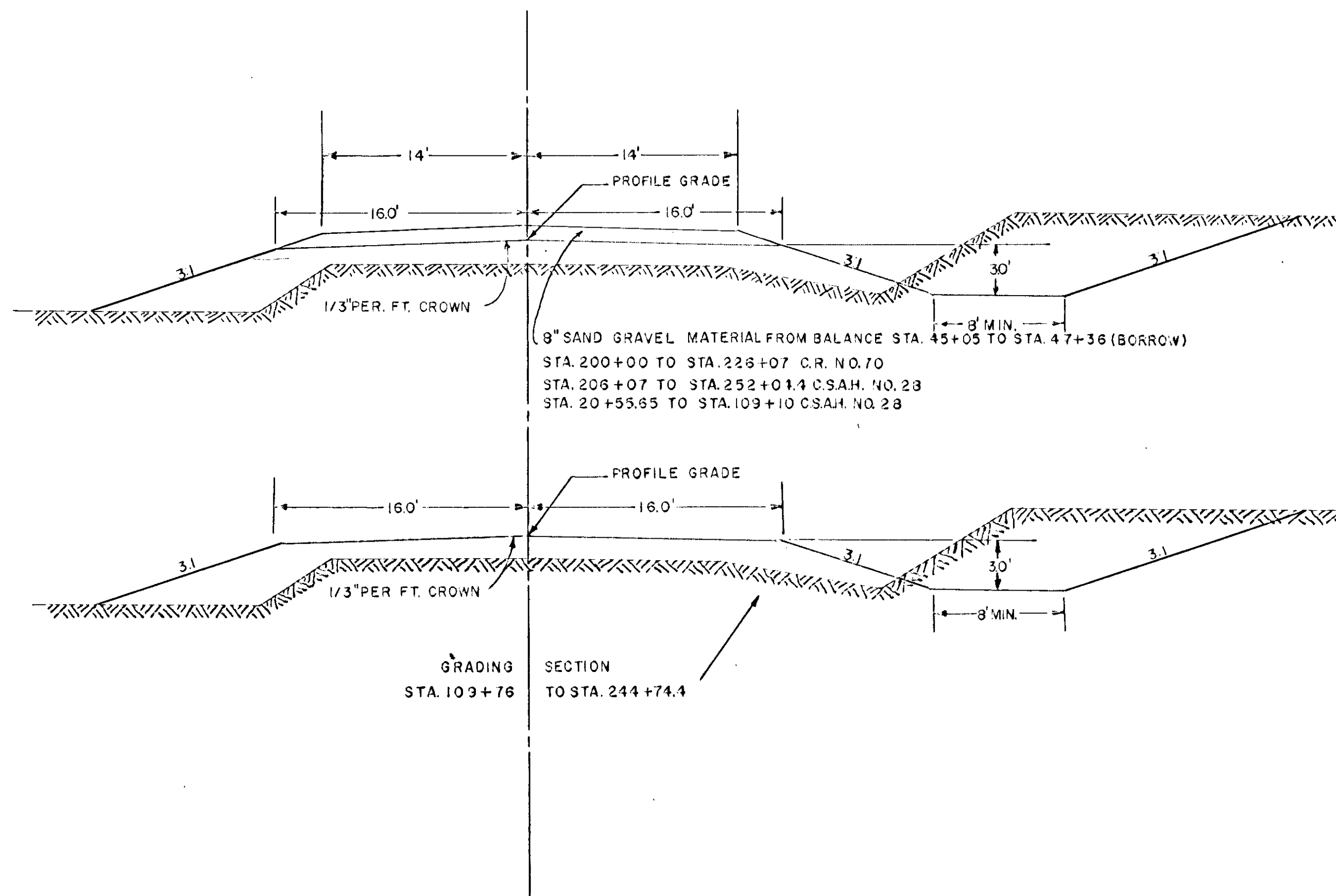
- * INCLUDES 2 APRONS
- ** COUNTY WILL FURNISH SEED ON PROJECT (60 LBS. PER ACRE)
- Δ TO BE USED IN OBLITERATING OLD ROAD STA. 42+00 TO STA. 47+00 LT. STA. 51+00 TO STA. 57+30 RT., STA. 114+00 TO STA. 121+00 LT. & STA. 124+00 TO STA. 123+00 RT.
- + BORROW EXC. 14,533 CU. YDS. OF ROADWAY EXC. FROM STA. 45+05 TO STA. 47+36 TO BE USED FOR 8" LIFT AFTER COMPLETION OF GRADING STA. 200+00 TO STA. 228+07 ON C.P. 62-13-70 STA. 226+07 TO STA. 252+04.4 ON SP 02-628-01 & STA. 20+55.65 TO STA. 109+10 ON SP 02-628-01
- WATER FOR COMPACTING UPPER 8 INCHES OF SUBGRADE

STANDARD DETAIL PLATES

THE FOLLOWING STANDARD DETAIL PLATES, APPROVED BY THE BUREAU OF PUBLIC ROADS, SHALL APPLY ON THIS PROJECT.

PLATE NO.	DESCRIPTION
3000B	SCP CLASS II & IX
3014	SCP ARCH
3100B & 3102A	CONG. APRON
3110 & 3112	CONG. APRON ARCH
8000A 8001	STANDARD SIGNS & BARRICADES
8003-8008A	
9000	APPROACHES & ENTRANCES

TYPICAL GRADING SECTIONS



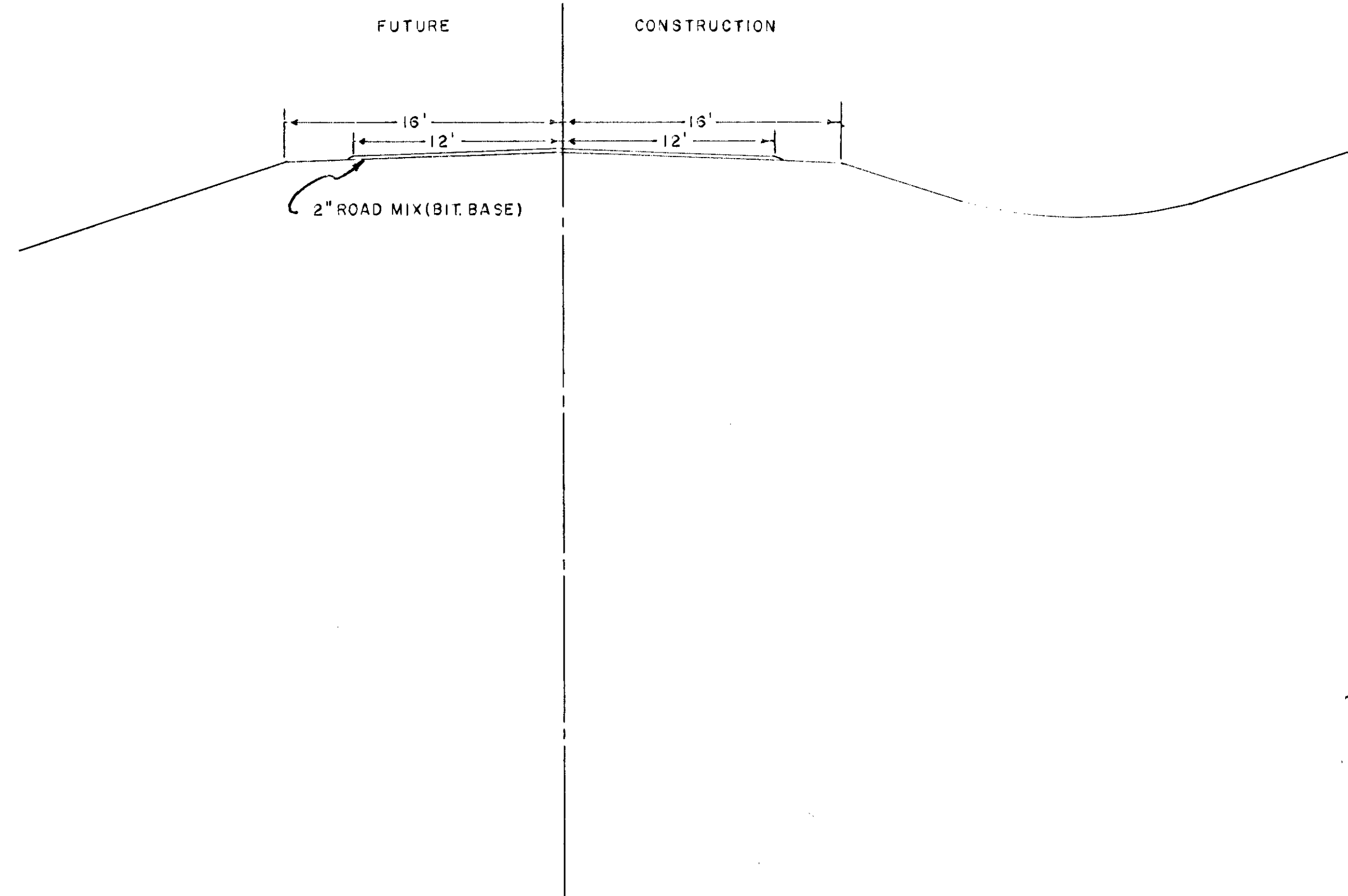
SPECIAL DETAILS

ROADBED TO BE BLADED TO 1/3" PER FT. PITCH DURING FINISHING OPERATIONS.

THE UPPER 1.0' OF NATURAL SOIL IS CONSIDERED UNSUITABLE FOR USE IN THE UPPER 1.0' OF ROADBED THIS PORTION SHALL BE PLACED BELOW THE UPPER 1.0' OF EMBANKMENT DURING CONSTRUCTION.

NOTE: ALL DIMENSIONS & SLOPES SHOWN ON TYPICAL SECTION ARE APPROXIMATE ONLY.

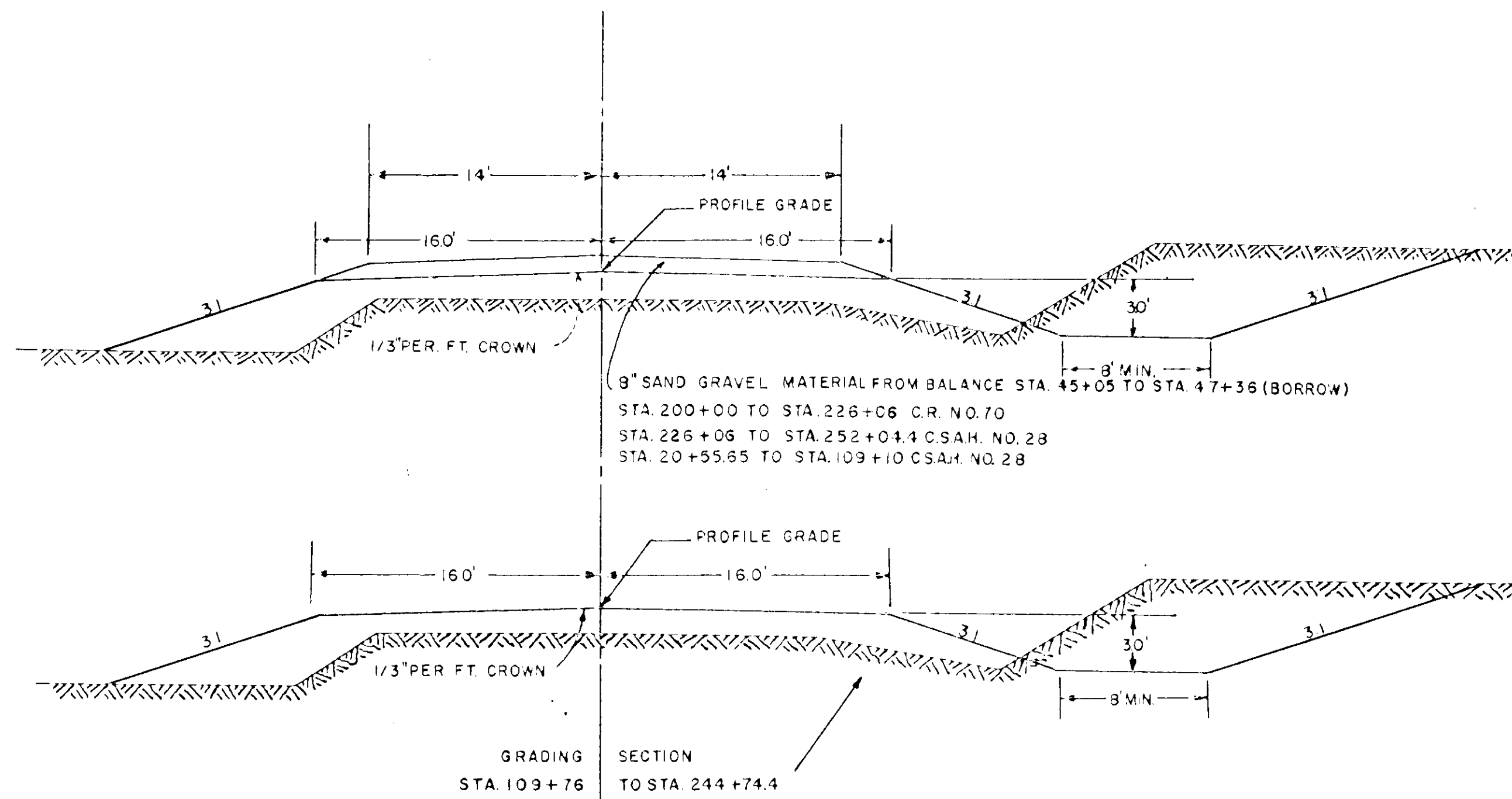
TYPICAL BASE & SURFACE SECTIONS



ESTIMATED QUANTITIES

SPECIFICATION NO.	ITEM	UNIT	CR.# 70 NON PARTICIPATING	CSAH # 28 FA S.	TOTAL ESTIMATED QUANTITIES
2101.501	CLEARING	ACRE	20	630	710
2101.502	CLEARING	TREE	0	41	41
2101.506	GRUBBING	ACRE	15	830	845
2101.507	GRUBBING	TREE	0	55	55
2104.501	REMOVE PORTABLE CULV	LIN.FT.	117	500	617
2104.510	REMOVE FENCE	LIN.FT.	135	3051	3186
557.621	RESET FENCE	LIN.FT.	85	8,924	9,009
2104.508	REMOVE SIDEWALK	SQ.YD.	0	11	11
2105.501	CLASS "A" EXC.	CU.YD.	7,215	102,062	109,277
2105.506	BORROW EXC CLASS "A"	CU.YDS.	2,700	11,883	14,583
2501.501	PIPE CULV EXC.	CU.YD.	57	692	749
2501.511-15	F&I, 15" C.M.P. CULV.	LIN.FT.	36	930	966
2501.511-18	F&I, 18" C.M.P. CULV.	LIN.FT.	184	530	714
2501.521-24	F&I, 24" SCP CULV. CL. II	LIN.FT.	0	96	96
2501.521-36	F&I, 36" SCP CULV. CL. II	LIN.FT.	0	158	158
2501.521-48	F&I, 48" SCP CULV. CL. II	LIN.FT.	0	52	52
2501.522-44	F&I, 44" SCP ARCH CULV. CL. IV	LIN.FT.	32	100	132
2501.536	INSTALL S.C. CULV.	LIN.FT.	0	74	74
501.681	SAND GRAVEL SUB FOUNDATION	CU.YDS.(V.M.)	35	599	634
2515.541-24	F&I, APRONS 24" SCP CULV.	APRON	0	4	4
2515.541-36	F&I, APRONS 36" SCP CULV.	APRON	0	8	8
2515.541-48	F&I, APRONS 48" SCP CULV.	APRON	0	2	2
2515.542-44	F&I, APRONS 44" SCP ARCH CULV.	APRON	2	6	8
2574.501	ROAD SIDE SEEDING	ACRE	3	39	42
2575.501	SURFACE MULCHING TYPE I (7)	TON	2.15	22.5	24.65
2575.508	SURFACE MULCHING TYPE 6 (7)	GALLON	215	2250	2465
2130.501	WATER FOR MULCH	M-GALLON	8	73	81
2130.501	WATER FOR COMPACTING SUBGRADE	M-GALLON	70	338	408
2123.503	MOTOR GRADER	HOUR	0	16	16
2123.509	DOZER	HOUR	0	6	6

TYPICAL GRADING SECTIONS



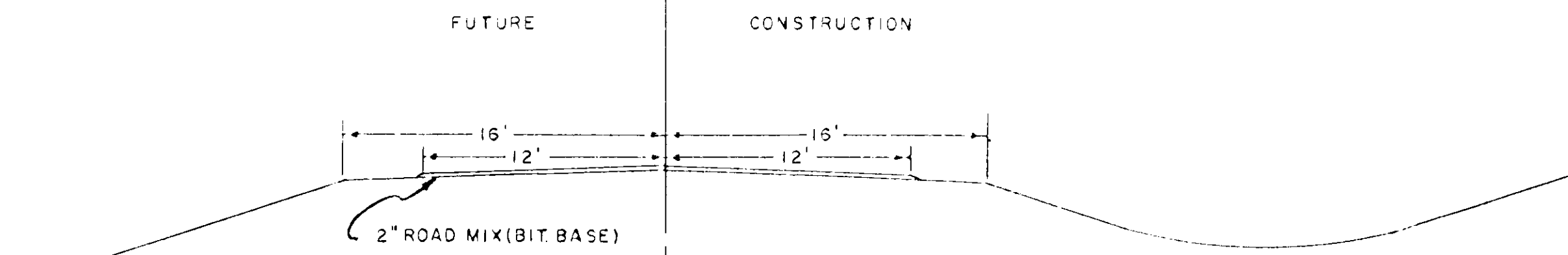
SPECIAL DETAILS

ROADBED TO BE BLADED TO 1/3" PER FT. PITCH DURING FINISHING OPERATIONS.

THE UPPER 1.0' OF NATURAL SOIL IS CONSIDERED UNSUITABLE FOR USE IN THE UPPER 1.0' OF ROADBED THIS PORTION SHALL BE PLACED BELOW THE UPPER 1.0' OF EMBANKMENT DURING CONSTRUCTION.

NOTE: ALL DIMENSIONS & SLOPES SHOWN ON TYPICAL SECTION ARE APPROXIMATE ONLY.

TYPICAL BASE & SURFACE SECTIONS

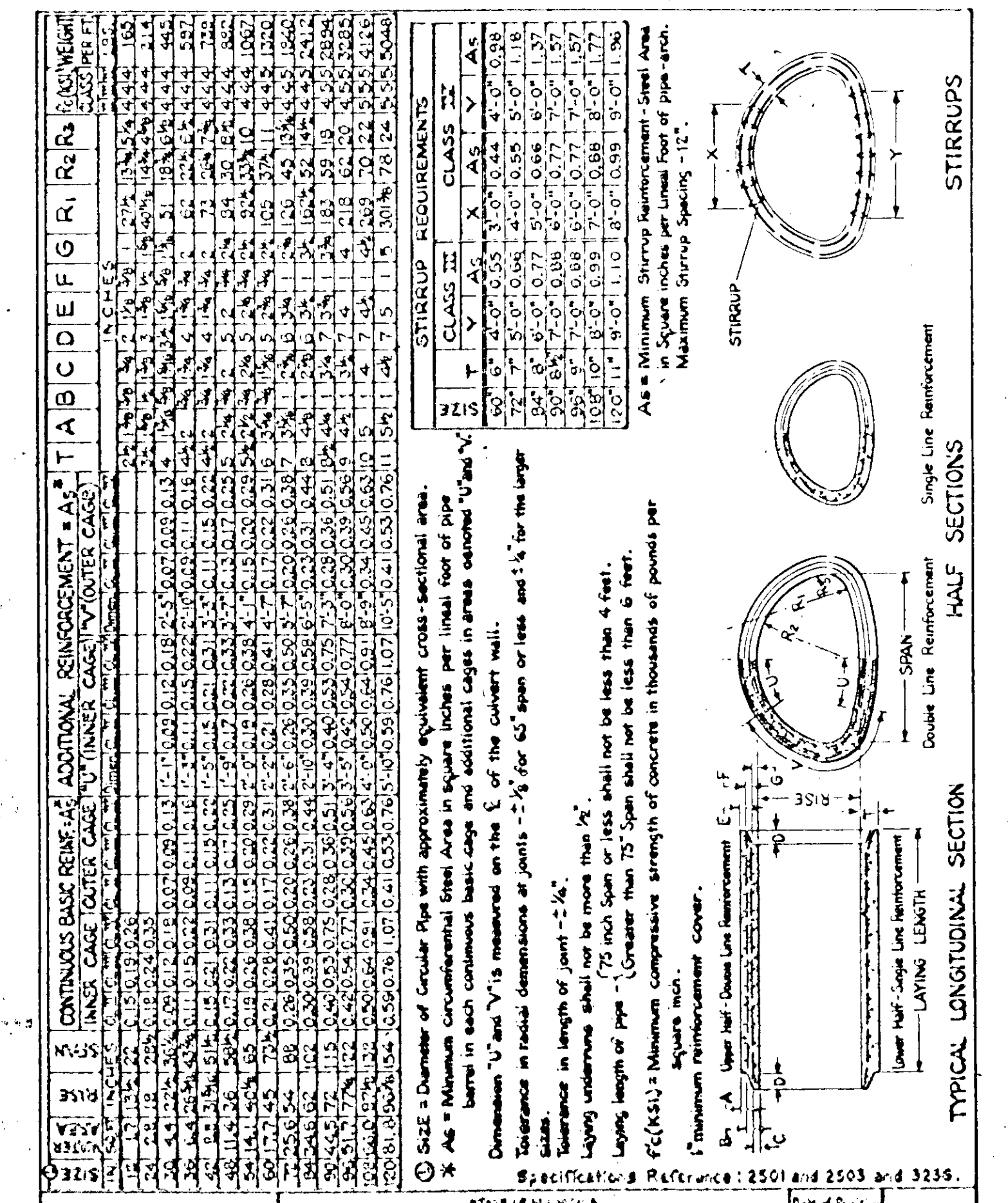


- * INCLUDES 2 APRONS
- ** COUNTY WILL FURNISH SEED ON PROJECT (60 LBS PER ACRE)
- Δ TO BE USED IN OBLITERATING OLD ROAD STA. 42+00 TO STA. 47+00 L.T. STA. 51+00 TO STA. 57+30 R.T., STA. 114+00 TO STA. 121+00 L.T. & STA. 124+00 TO STA. 129+00 R.T.
- + BORROW EXC 14,583 CU YDS OF ROADWAY EXC FROM STA. 45+05 TO STA. 47+36 TO BE USED FOR 8" LIFT AFTER COMPLETION OF GRADING STA 200+00 TO STA. 226+07 ON C.P. STA. 226+07 TO STA. 252+04 1/2 SP 02-628-01 & STA. 20+55.65 TO STA. 109+10 ON SP 02-628-01
- WATER FOR COMPACTING UPPER 8 INCHES OF SUBGRADE

STANDARD DETAIL PLATES

THE FOLLOWING STANDARD DETAIL PLATES, APPROVED BY THE BUREAU OF PUBLIC ROADS, SHALL APPLY ON THIS PROJECT.

PLATE NO	DESCRIPTION
3000B	SCP CLASS II B&C
3014	SCP ARCH
3008 & 3102A	CONC APRON
3110 & 3112	CONC APRON ARCH
8000A 8001	STANDARD SIGNS & BARRICADES
8003-8008A	
3000	APPROACHES & ENTRANCES



REINFORCED CONCRETE PIPE-ARCH

3014A

CR. NO. 70 LT.
NO CULV. REQ.

FE. STA. 208+74 LT.
INP. 12' X 16' S.C.
REMOVE.
F.B.I. 15' X 36' C.M.P.

FE. STA. 210+40 LT.
INP. 12' X 16' S.C.
REMOVE.
F.B.I. 18' X 36' C.M.P.

FE. STA. 215+58 LT.
F.B.I. 18' X 36' C.M.P.

STA. 217+11 E.
INP. 12' X 33' CM.
REMOVE.
INP. 12' X 30' CM.
REMOVE.
F.B.I. 44" X 32' S.C.P. ARCH CLASS III
F.B.I. 2 44" S.C.P. ARCH APRONS.
PIPE CULV. EXC. 57 CU. YDS.
SAND GRAVEL SUBFOUNDATION 35 CU. YDS.

TWP. RD. STA. 225+97 LT.
F.B.I. 18' X 40' C.M.P.

COUNTY PROJ. 62-13-70
BEGIN NON-PARTICIPATING
STA. 200+00

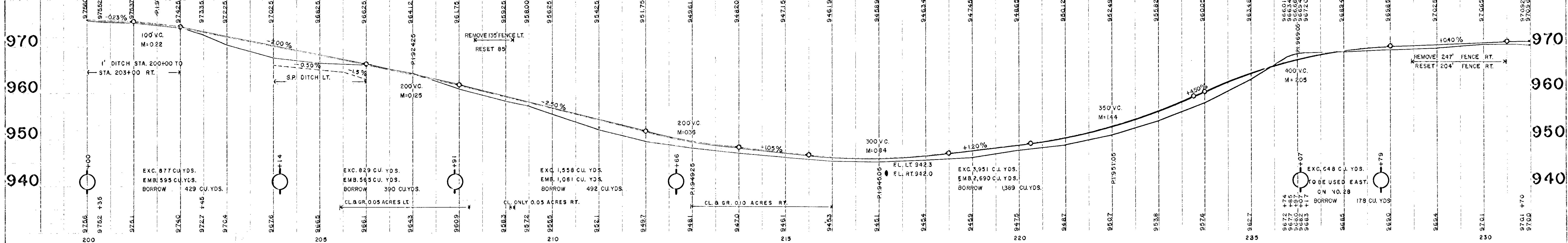
COUNTY PROJ. 62-13-70
END NON-PARTICIPATING
STA. 226+06.3
+ STA. 226+06.3
S.R. 02-628-01

CONTROL BENCH MARK
USGS BM POST
IN NW CORNER OF PARK IN CENTER OF
ST. FRANCIS SETTLEMENT
ELEV. 918.67

BM #1A SPIKE IN 36" ELM SE. STA.
200+00 - ELEV. 977.78

BM #2A SPIKE IN RR RT. STA.
214+61 ELEV. 948.75

BM #3A SPIKE PP. RT. STA.
225+25 ELEV. 965.82



FE. STA. 235+50 LT.
F.B.I. 15' X 34' C.M.P.

FE. STA. 236+29 LT.
F.B.I. 15' X 34' C.M.P.

STA. 242+09 L.
INP. 12' X 37' S.C.
REMOVE.

FE. STA. 246+83 LT.
F.B.I. 15' X 34' C.M.P.

STA. 249+50 E.
INP. 18' X 41' C.M.
REMOVE.

TWP. RD. STA. 252+04 LT.
F.B.I. 15' X 40' C.M.P.

F.B.I. 44" X 34' S.C.P. ARCH CLASS III
F.B.I. 2 44" S.C.P. ARCH APRONS
PIPE, CULV. EXC. 47 CU. YDS.
SAND GRAVEL SUBFOUNDATION 36 CU. YDS.

F.B.I. 24" X 48' S.C.P. CLASS II
F.B.I. 2 24" APRONS
PIPE, CULV. EXC. 33 CU. YDS.
SAND GRAVEL SUBFOUNDATION 24 CU. YDS.

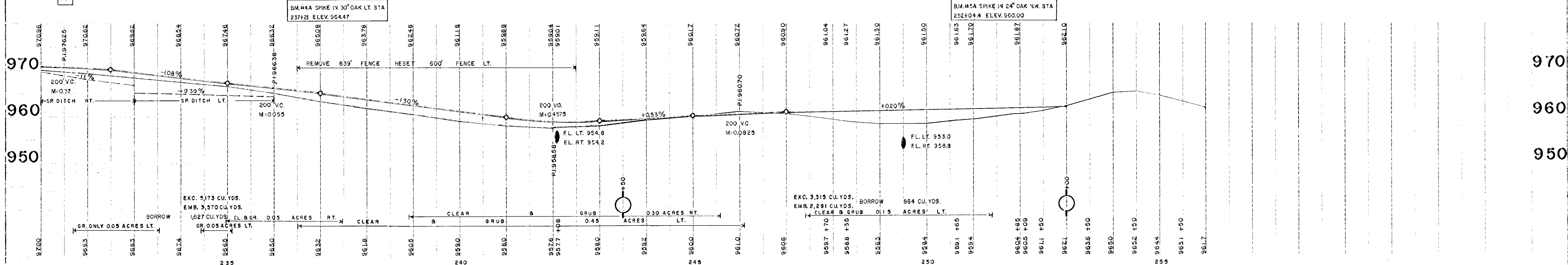
BRUSH & STUMPS

BEGIN S.P. 02-628-01 S 6392(1)
STA. 252+04.4

FE. STA. 231+36 RT.
F.B.I. 15' X 34' C.M.P.

FE. STA. 232+28 RT.
F.B.I. 15' X 34' C.M.P.

TWP. RD. STA. 252+11 RT.
F.B.I. 15' X 40' C.M.P.

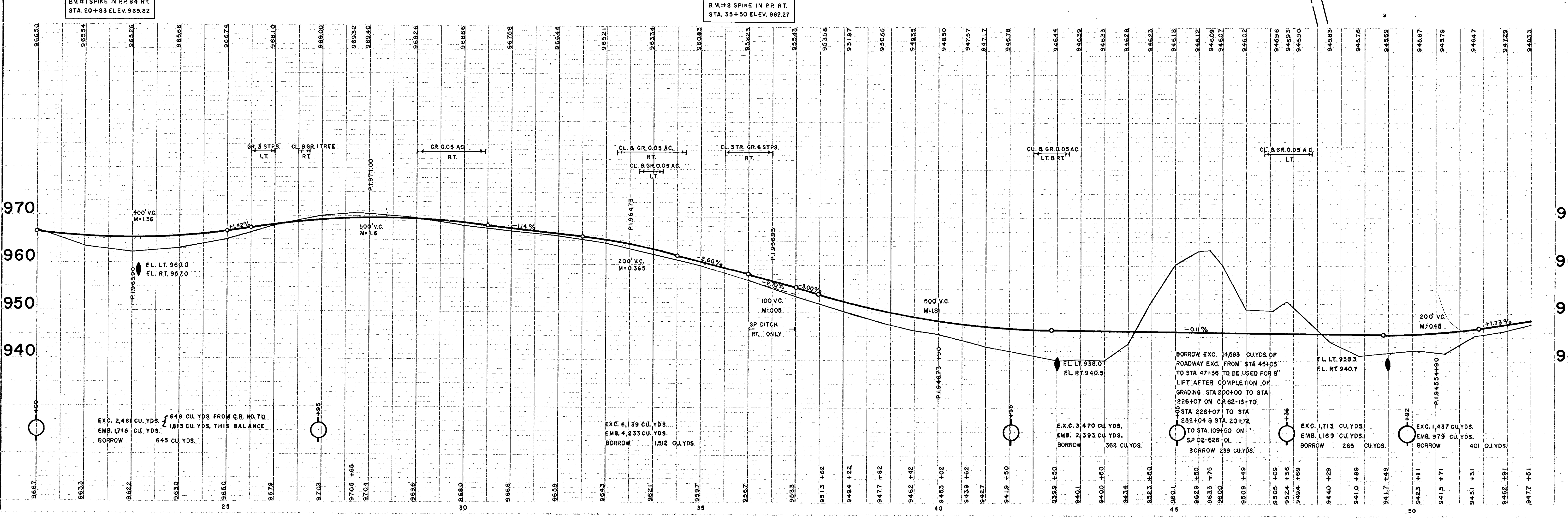
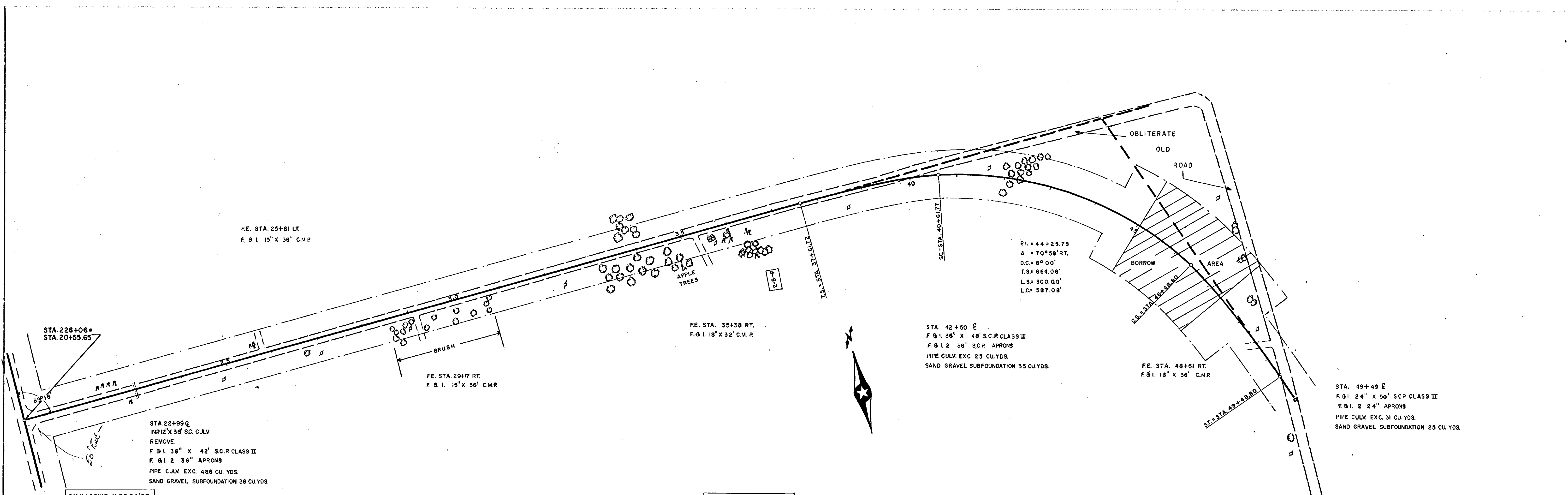


BM #4A SPIKE IN 30" OAK LT. STA.
237+21 ELEV. 964.47

BM #5A SPIKE IN 24" OAK NW. STA.
252+04.4 ELEV. 960.00

EXC. 5,173 CU. YDS.
EMB. 3,570 CU. YDS.
1,627 CU. YDS. CL. & GR.
GR. 0.05 ACRES LT.

EXC. 3,315 CU. YDS.
EMB. 2,291 CU. YDS.
884 CU. YDS. BORROW
CLEAR & GRUB 0.15 ACRES LT.



TITLE BOOK NO. 10000
 SHEET NO. 4 OF 31
 DATE: 10/1/51

PROJECT: NEW YORK STATE
 ROADWAY
 FROM NEW YORK STATE
 ROADWAY TO NEW YORK
 ROADWAY

FE. STA. 92+58 LT.
E.B.I. 18" X 36" C.M.R.

FE. STA. 96+42 LT.
E.B.I. 18" X 36" C.M.R.

STA. 97+75 E
INP. 24" X 40" C.M. CULV.
REMOVE
E.I. 36" X 48" S.C.P. CLASS II
E.B.I. 2-36" S.C.P. APRONS
PIPE CULV. EXC. 83 CU. YDS.
SAND GRAVEL SUBFOUNDATION. 57 CU. YDS.

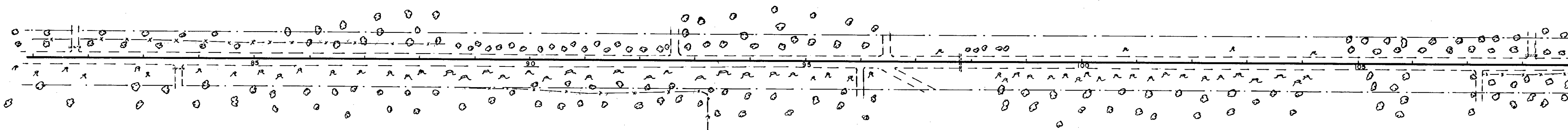
FE. STA. 108+14 LT.
INP. 12" X 21" C.M. CULV. REMOVE
E.B.I. 15" X 36" C.M.P.

FE. STA. 93+65 RT.
INP. 12" X 14" C.M. CULV.
REMOVE
PREVIOUS PAGE

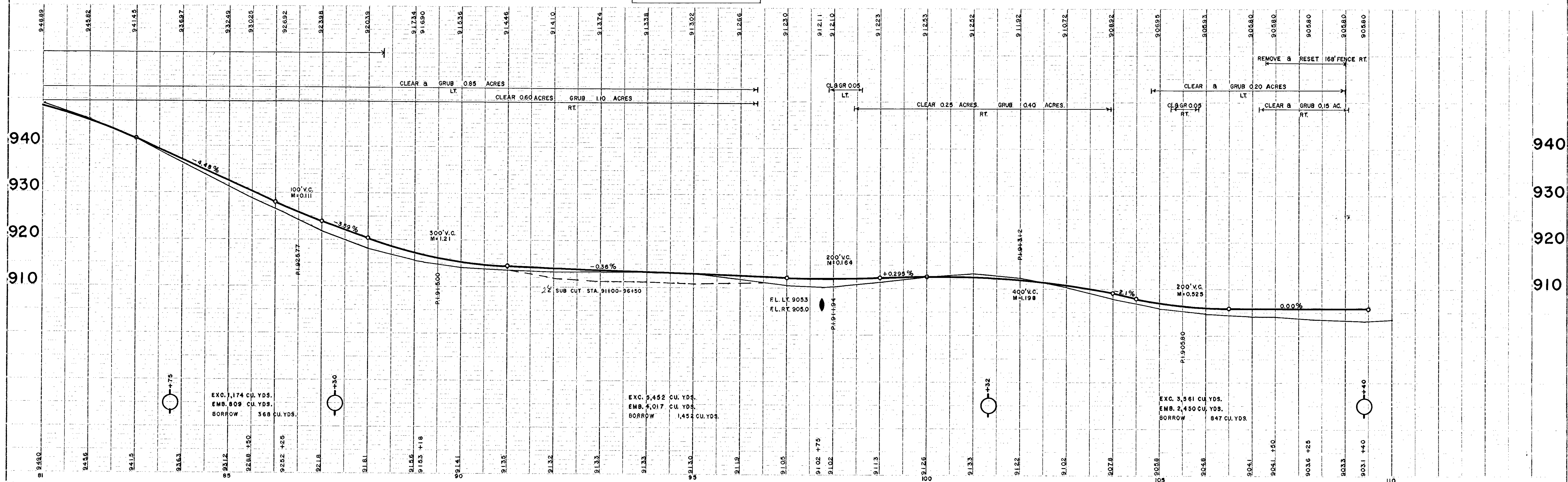
FE. STA. 95+98 RT.
E.B.I. 18" X 36" C.M.R.

FE. STA. 96+39 RT.
OMIT IN CONSTRUCTION

FE. STA. 107+21 RT.
E.B.I. 15" X 36" C.M.R.



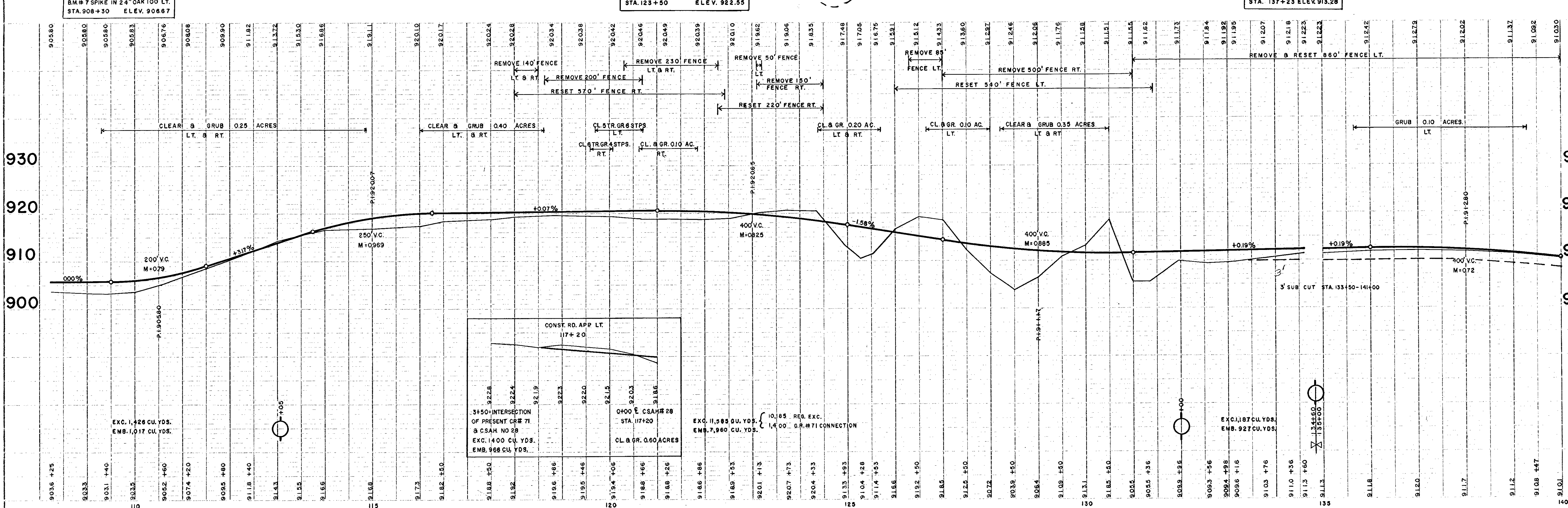
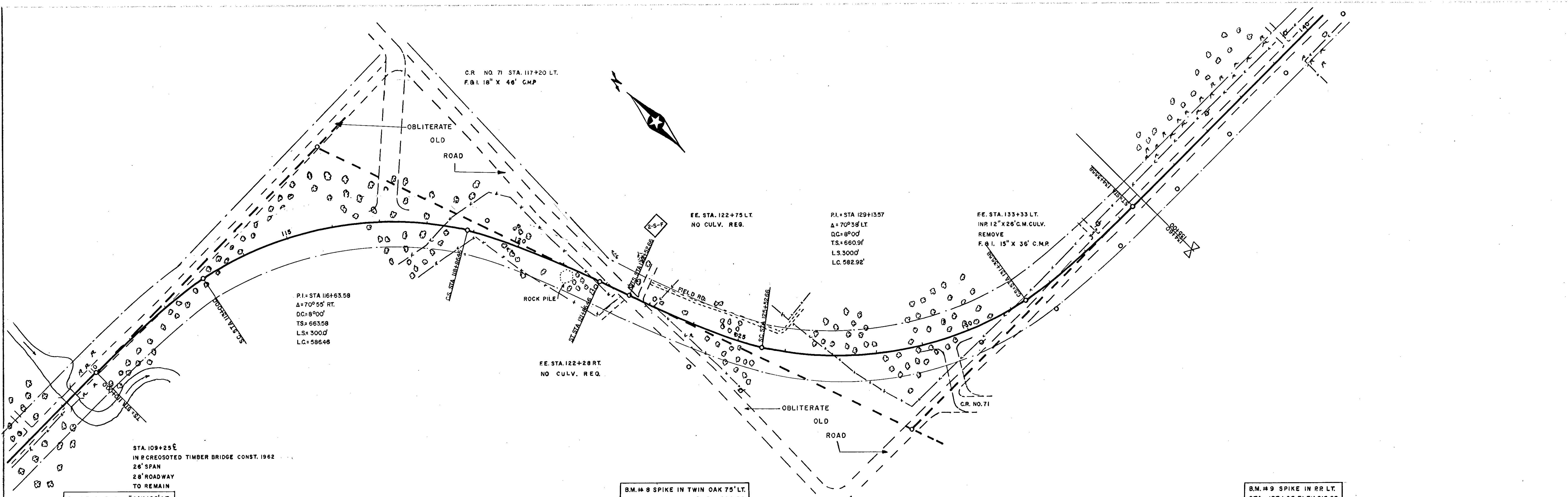
B.M. # 6 SPIKE IN ROOT 12" OAK 70' LT.
STA. 95+90 ELEV. 911.11



MADE BY: P. H. HARRIS, CIVIL ENGINEER
CHECKED BY: J. W. HARRIS, CIVIL ENGINEER
DATE: 10/15/50

SP02-628-01 S-6392 (1)

SHEET 6 OF 31 SHEETS



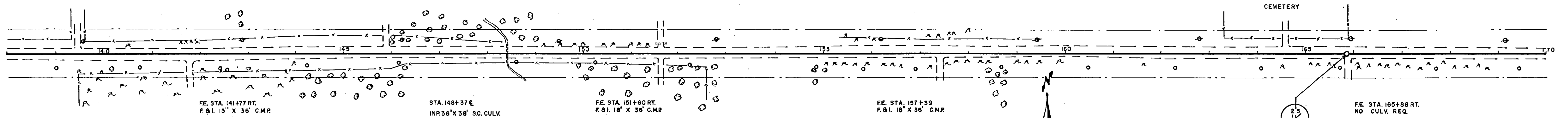
FE. STA. 139+46 LT.
F. & I. 15" X 36" C.M.P.

FE. STA. 145+88 LT.
F. & I. 15" X 36" C.M.P.

FE. STA. 151+60 LT.
INR 12" X 26" C.M. CULV.
REMOVE
F. & I. 18" X 36" C.M.P.

CEM. ENT. STA. 164+59 LT.
NO CULV. REQ.

PI. STA. 165+87.2
A=0°22' RT.



FE. STA. 141+77 RT.
F. & I. 15" X 36" C.M.P.

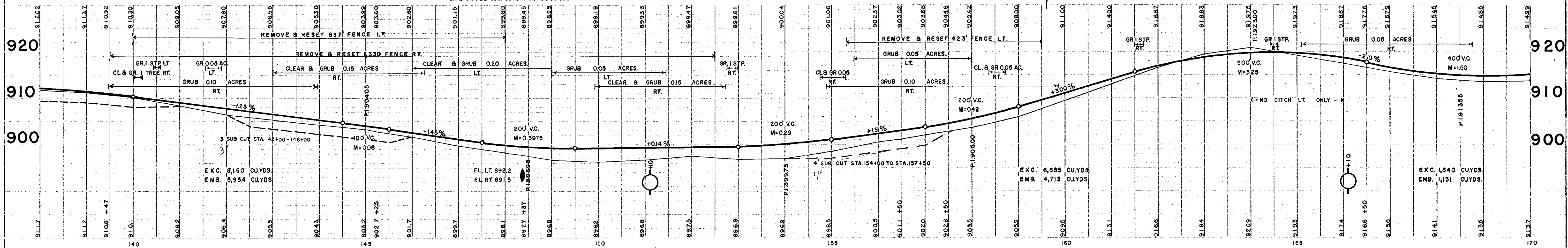
STA. 148+37 €
INR 36" X 36" S.C. CULV.
REMOVE
F. & I. 48" X 52" S.C.P. CLASS II
F. & I. 2 48" S.C.P. APRONS
PIPE CULV. EXC. 125 CU.YDS.
SAND GRAVEL SUBFOUNDATION 98 CU.YDS.

FE. STA. 151+60 RT.
F. & I. 18" X 36" C.M.P.

FE. STA. 157+39
F. & I. 18" X 36" C.M.P.

FE. STA. 165+88 RT.
NO CULV. REQ.

B.M. #10 SPIKE IN RR. LT.
STA. 165+90 ELEV. 918.48



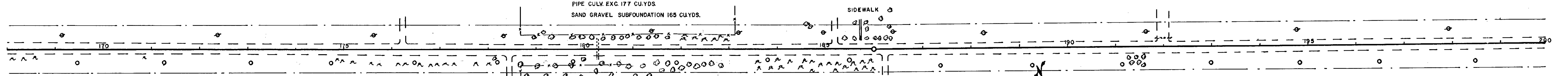
FE. STA. 176+26 LT.
F. & I. 15" X 36" C.M.P.

STA. 180+31 €
INR 18" X 47" C.M. CULV.
REMOVE
F. & I. 36" X 22" S.C.P. CLASS II
F. & I. 2 36" S.C.P. APRONS
INSTALL 36" X 38" SCR. (FROM STA. 148+37)
PIPE CULV. EXC. 177 CU.YDS.
SAND GRAVEL SUBFOUNDATION 165 CU.YDS.

FE. STA. 185+25 LT.
F. & I. 18" X 36" C.M.P.

PI. STA. 186+02.29
A=0°41' LT.

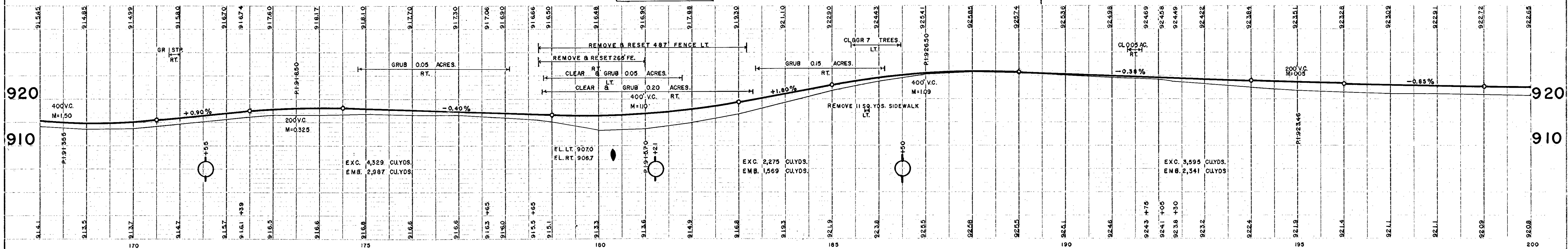
TWP RD. STA. 192+05 LT.
INR 12" X 31" S.C. CULV.
REMOVE
F. & I. 18" X 42" C.M.P.



FE. STA. 178+48 RT.
F. & I. 15" X 36" C.M.P.

FE. STA. 186+26 RT.
F. & I. 15" X 34" C.M.P.

B.M. #11 SPIKE IN 12" OAK LT.
STA. 182+50 ELEV. 917.95

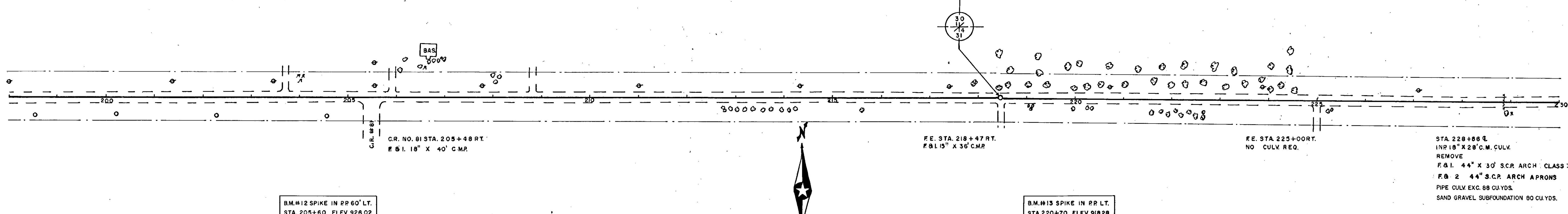


FE. STA. 203+71 LT.
NO CULV. REQ.

FE. STA. 205+92 LT.
F & I. 15" X 34" C.M.P.

FE. STA. 208+82 LT.
F & I. 15" X 36" C.M.P.

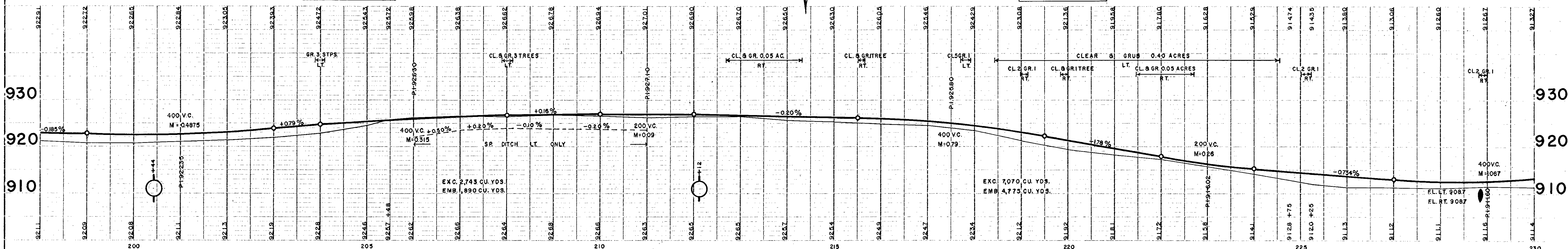
PI. STA. 218+45.3
Δ = 0° 11' RT.



B.M.#12 SPIKE IN PP 60' LT.
STA. 205+60 ELEV. 928.02

B.M.#13 SPIKE IN PP LT.
STA. 220+70 ELEV. 918.28

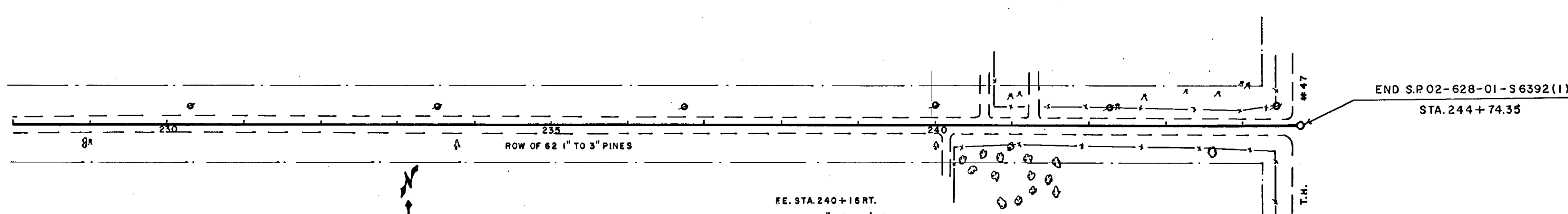
STA. 228+88 R.
IN 15" X 28" C.M. CULV.
REMOVE
F & I. 44" X 30" SCR. ARCH CLASS III
F & I. 2 44" X 30" SCR. ARCH APRONS
PIPE CULV. EXC. 88 CU. YDS.
SAND GRAVEL SUBFOUNDATION 80 CU. YDS.



FE. STA. 240+66 LT.
F & I. 15" X 36" C.M.P.

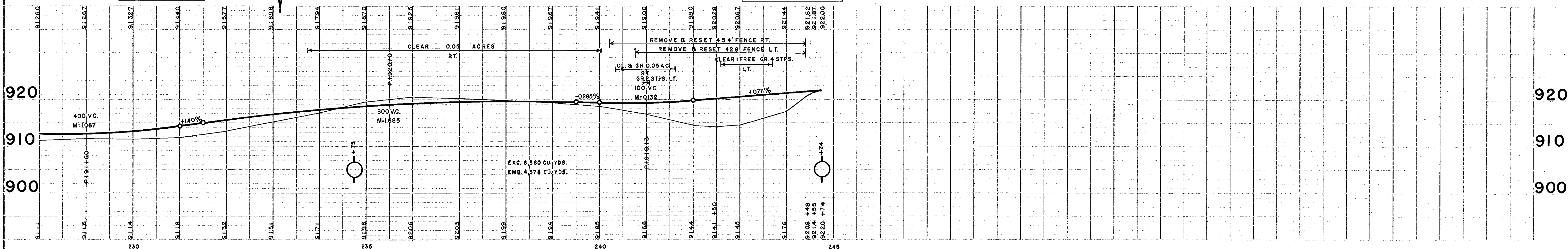
FE. STA. 241+29 LT.
F & I. 15" X 36" C.M.P.

JCT. T.H. NO. 47 STA. 244+74 LT. & RT.



B.M.#14 SPIKE IN PP LT.
STA. 230+25 ELEV. 913.00

B.M.#15 SPIKE IN 12" OAK LT.
STA. 243+50 ELEV. 917.43



PLAN 2 - PLAN FROM THE D.P.R. & R.E. STATIONED
HUFFEL & LEE CO., INC. 1974