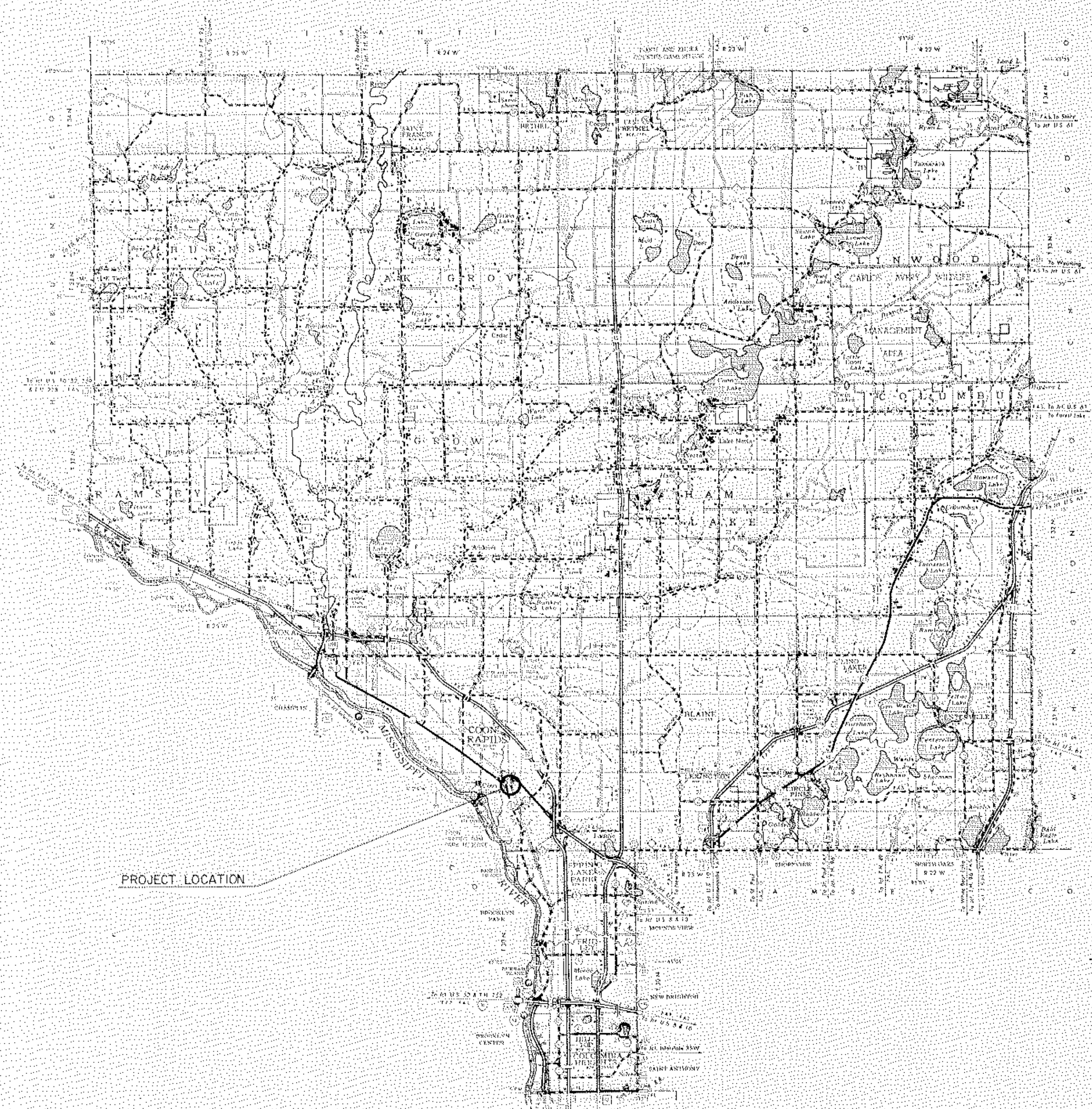
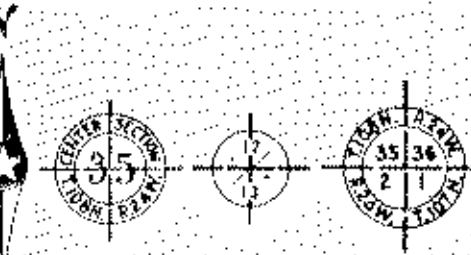


CONVENTIONAL SIGNS

STATE LINE	---
COUNTY LINE	---
TOWNSHIP OR RANGE LINE	---
SECTION LINE	---
QUARTER LINE	---
SIXTEENTH LINE	---
SEVENTH LINE	---
PRESENT RIGHT-OF-WAY LINE	---
CONTROL OF ACCESS LINE	---
PROPERTY LINE (EAST LINE)	---
VACATED PLATTED PROPERTY	---
CONCRETE OR CURE LIMITS	---
TRIM WISCONSIN CENTER LINE	---
RETAINING WALL	---
RAILROADS	---
RAILROAD RIGHT-OF-WAY LINE	---
RIVER OR CREEK	---
DRY RUN	---
DRAINAGE DITCH	---
ELECTRIC POWER LINE	---
TELEPHONE OR TELEGRAPH LINE	---
JOINT TELEPHONE AND POWER	---
CONDUIT	---
TELEPHONE CABLE (ASTHMA)	---
TELEPHONE CABLE UNDERGROUND	---
POWER CABLE UNDERGROUND	---
DAY MARK	---
CULVERT	---
GRAVEL BAR	---
BARBED WIRE FENCE	---
WOODEN WIRE FENCE	---
CHAIN LINK FENCE	---
RAILROAD SIGN FENCE	---
STONE WALL OR FENCE	---
WATER PIPE	---
SEWER PIPE	---
DRAIN TILE	---
CRIPPLE	---
WASHER	---
TIMBER	---
OSGARD	---
BROUSE	---
WATERPIT	---
CATCH BASIN	---
MANHOLE	---
PISTON	---
STREET LIGHT	---
RAILROAD CROSSING SIGN	---
RAILROAD CROSSING WALL	---
ELECTRIC WARNING SIGN	---
EXCERPTION GATE	---
EATTLE GUARD	---
DIVERSION (Highway Only)	---
UNDERPASS (Highway Only)	---
BRIDGE	---
BUILDING (See Sign Plans)	---
T FRAME	---
S SIGN	---
A SIGN	---
HOW HIGH OR DEEP	---
MONUMENT (STONE, CONCRETE, OR METAL)	---
WOODEN POST	---
GRAVEL PIT	---
SAND PIT	---
BERM PIT	---
ROCK QUARRY	---
MEANDER COVER	---



PROJECT LOCATION

DESIGN DESIGNATION

ADT (CURRENT YEAR) 14,700
 ADT (FUTURE YEAR) 29,400
 T (HEAVY COMMERCIAL)
9 Ton Design
 Design Speed 45 MPH
 Design Speed not achieved at:
 STA _____ TO STA _____ MPH
 STA _____ TO STA _____ MPH

SPECIFICATIONS
 THE "STANDARD" SPECIFICATIONS FOR HIGHWAY CONSTRUCTION, DATED JAN. 1, 1978, SHALL GOVERN

Fed. Proj. No. _____

STATE OF MINNESOTA
 DEPARTMENT OF HIGHWAYS

CONSTRUCTION PLAN FOR BRIDGE DECK REPAIR

County Highway No. 3

Between CSAH I - E. RIVER ROAD And CSAH II - FOLEY BLVD
 From SEC. 26, T. 31 N., R. 24 W. To SEC. 26, T. 31 N., R. 24 W.
Give proper description, Section, Township and Range

GROSS LENGTH 0 FEET 0 MILES
 BRIDGES LENGTH 451.76 FEET 09 MILES
 EXCEPTIONS LENGTH 0 FEET 0 MILES
 NET LENGTH 451.76 FEET 09 MILES

INDEX OF SHEETS

- Sheet No. 1A Title Sheet & Layout Map
- No. 1 Est. Quantities & Typical Sec.
- No. 2 General Plan Elevation
- No. 4-10 Removal & Reconstruction
- No. 11 Median & Rolling Details
- No. 12 Waterproof Expansion Device
- No. 13 Traffic Control Details

THERE ARE 14 SHEETS IN THIS PLAN

ALL APPLICABLE FEDERAL, STATE AND LOCAL LAWS AND ORDINANCES WILL BE COMPLIED WITH IN THE CONSTRUCTION OF THIS PROJECT.

I HEREBY CERTIFY THAT THIS PLAN WAS PREPARED BY ME OR UNDER MY DIRECT SUPERVISION AND THAT I AM A duly REGISTERED PROFESSIONAL ENGINEER UNDER THE LAWS OF THE STATE OF MINNESOTA.

Paul K. Reed
 COUNTY ENGINEER DATE 7-12-83

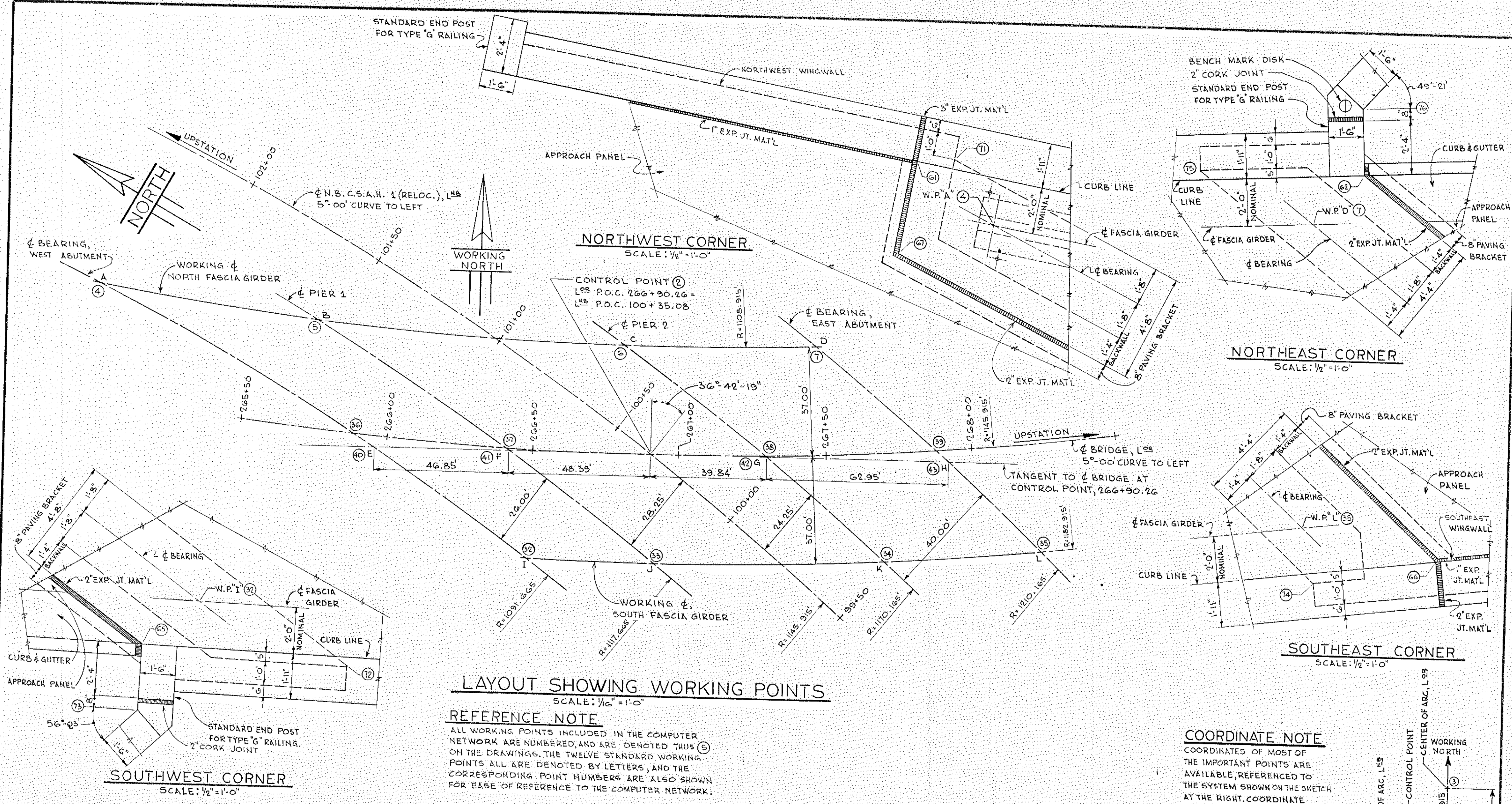
ANOKA COUNTY REG. NO. 6549

RECOMMENDED FOR APPROVAL _____ 19____
 DISTRICT ENGINEER

RECOMMENDED FOR APPROVAL _____ 19____

APPROVED _____ 19____
 STATE AID ENGINEER

Minn. Proj. No. _____ County Proj. No. 83-08-03
 State Proj. No. _____ S.A.P. _____

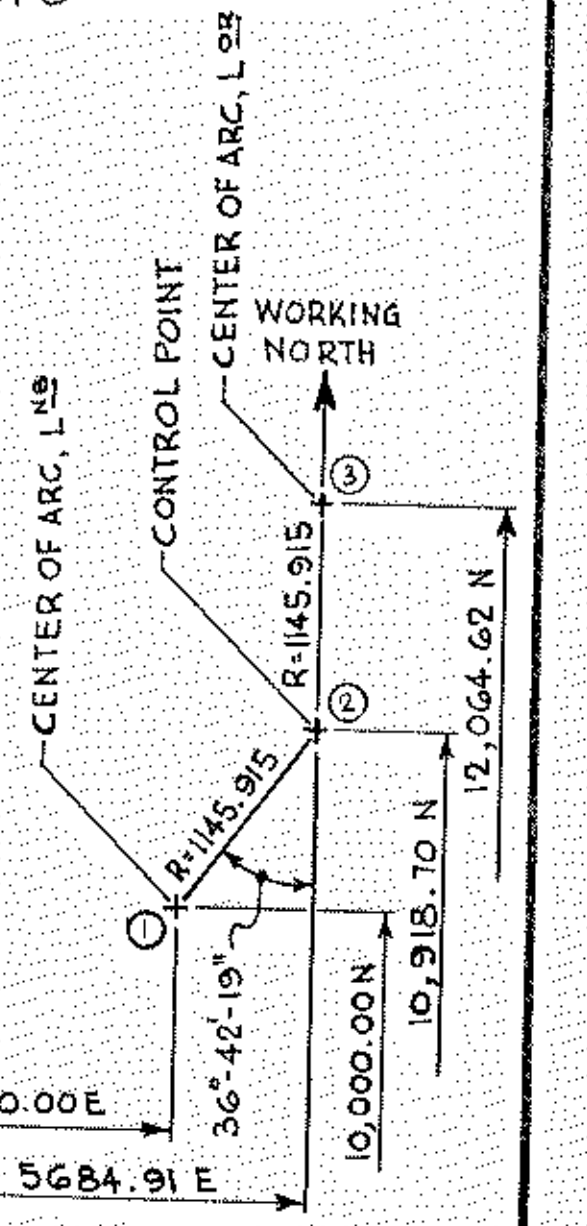


LAYOUT SHOWING WORKING POINTS
SCALE: 1/16" = 1'-0"

REFERENCE NOTE
ALL WORKING POINTS INCLUDED IN THE COMPUTER NETWORK ARE NUMBERED, AND ARE DENOTED THUS (5) ON THE DRAWINGS. THE TWELVE STANDARD WORKING POINTS ALL ARE DENOTED BY LETTERS, AND THE CORRESPONDING POINT NUMBERS ARE ALSO SHOWN FOR EASE OF REFERENCE TO THE COMPUTER NETWORK.

COORDINATE NOTE

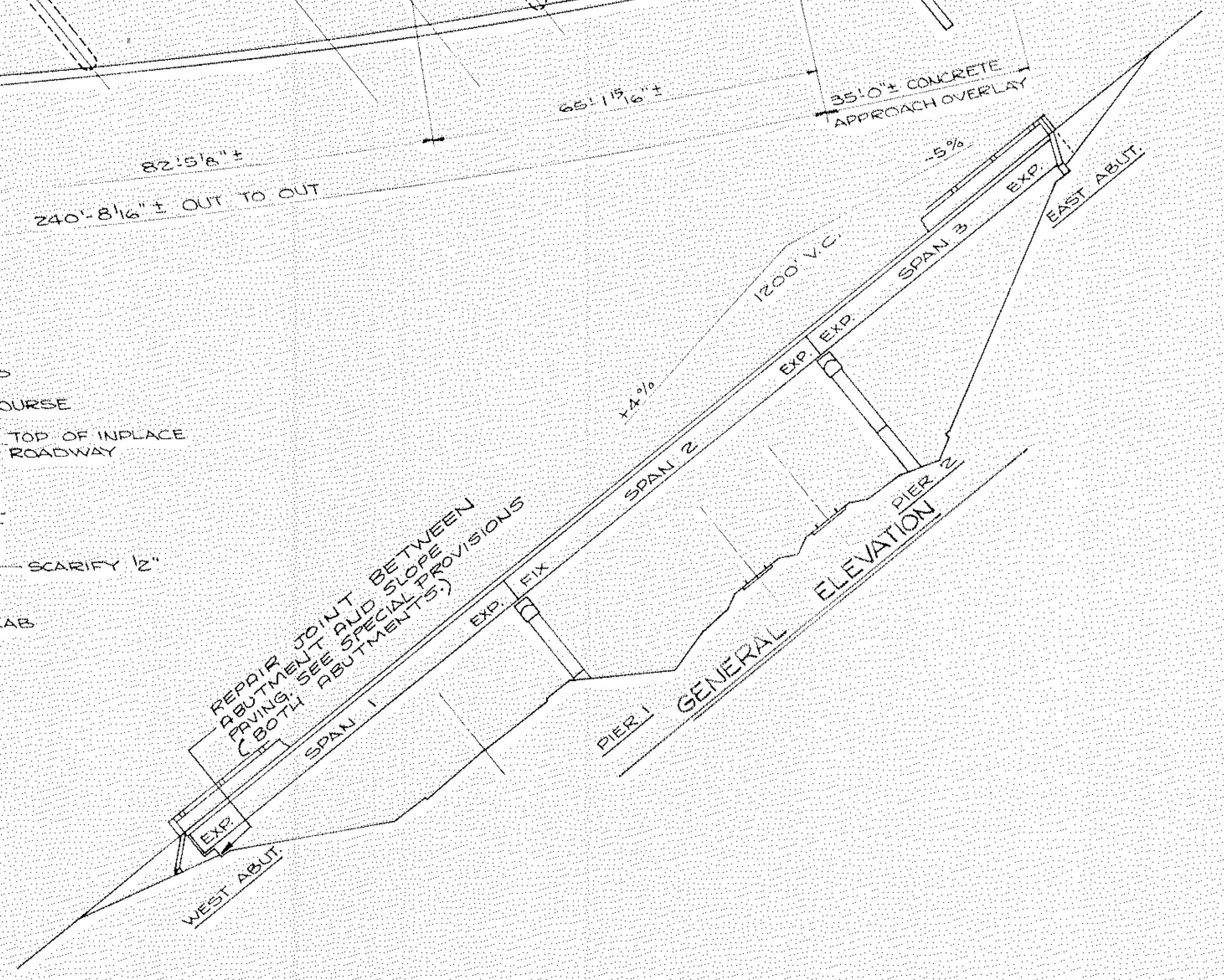
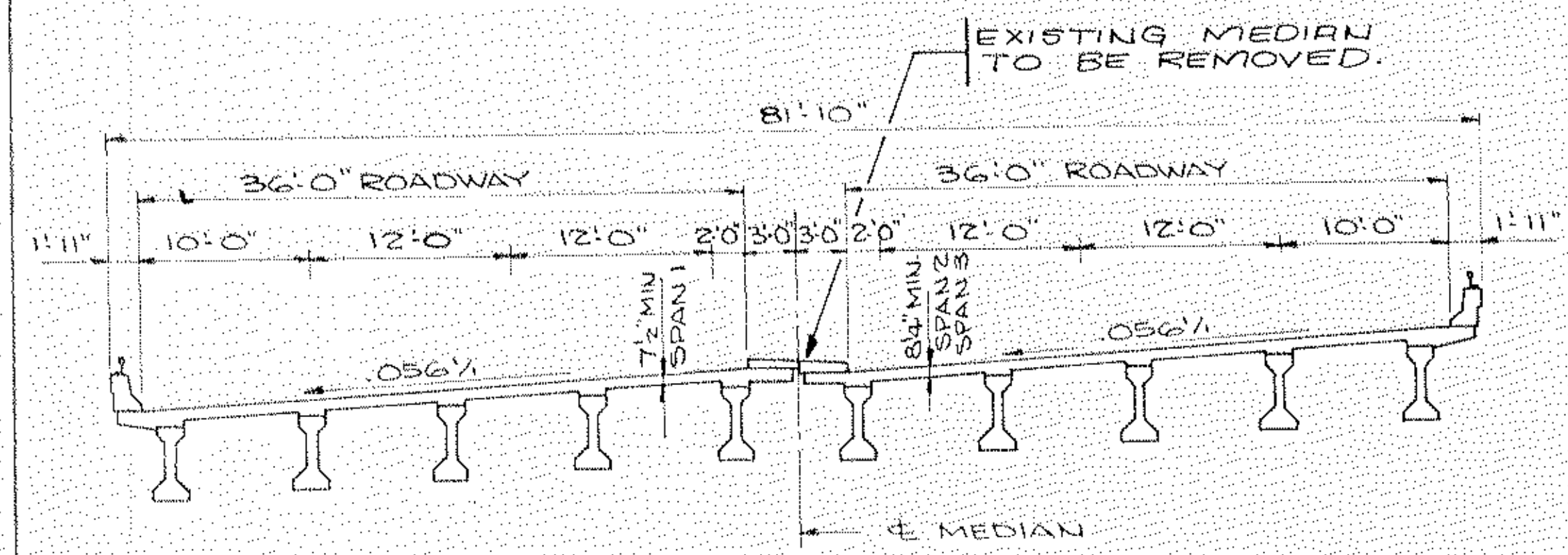
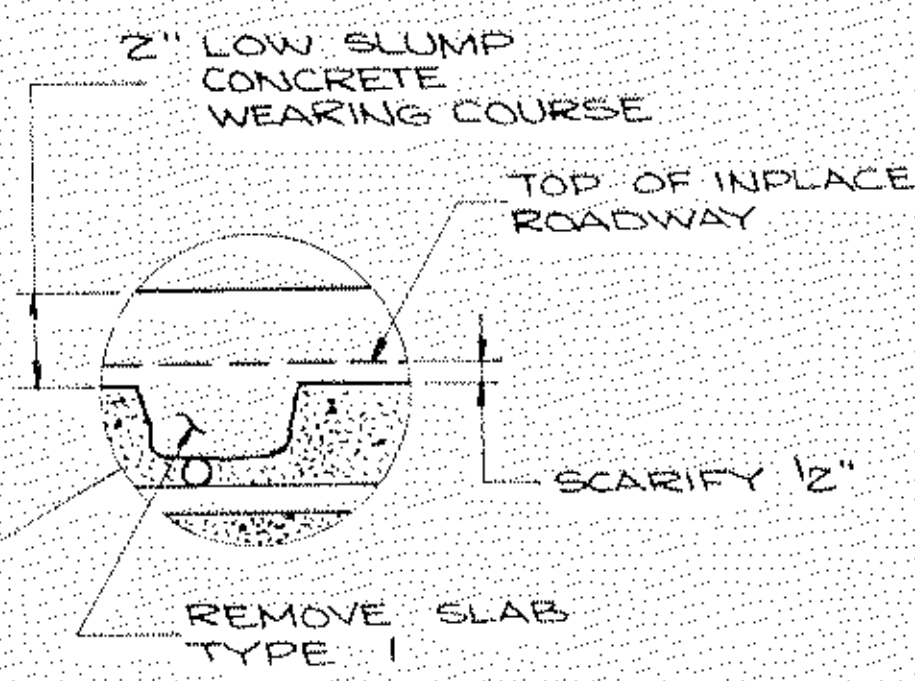
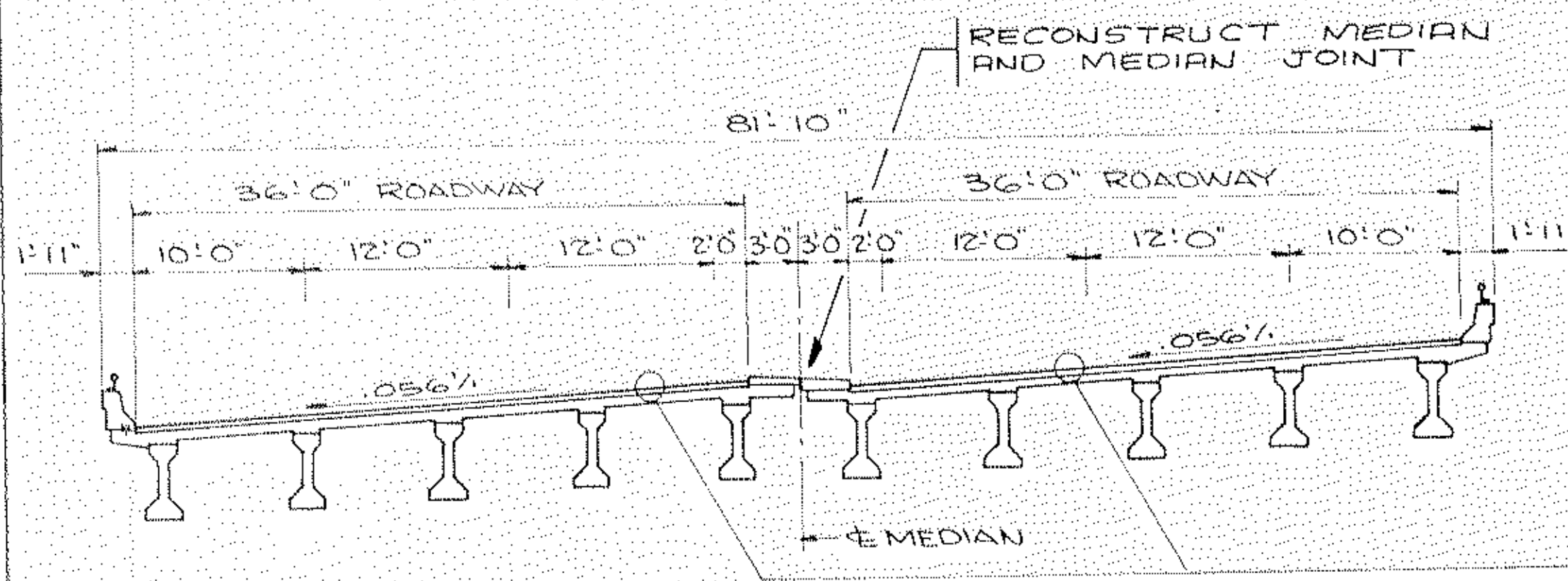
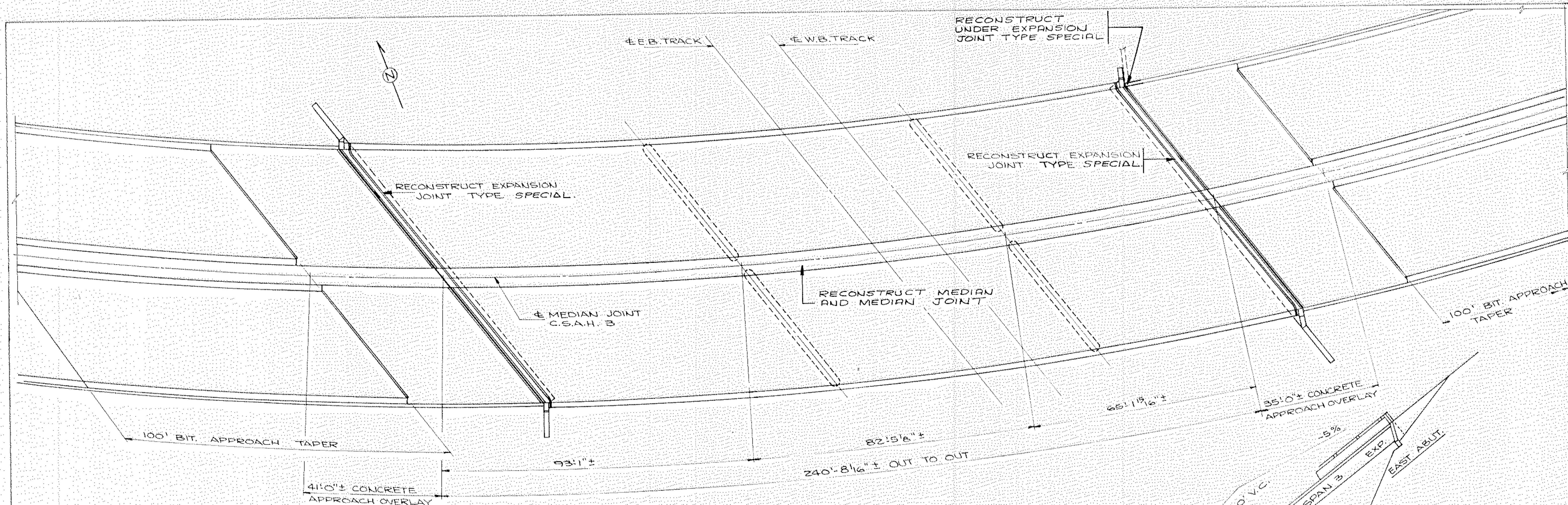
COORDINATES OF MOST OF THE IMPORTANT POINTS ARE AVAILABLE, REFERENCED TO THE SYSTEM SHOWN ON THE SKETCH AT THE RIGHT. COORDINATE INFORMATION, IN THE FORM OF COMPUTER OUTPUT, MAY BE MADE AVAILABLE TO THE CONTRACTOR UPON REQUEST. SUCH INFORMATION IS NOT A PART OF THE CONTRACT. IT IS INTENDED THAT THE BASIC LAYOUT STAKING BE DONE FROM DIMENSIONS AND OTHER INFORMATION GIVEN ON THE DRAWINGS. THEN, WHEREVER POSSIBLE, IT IS INTENDED THAT THE COORDINATES BE USED TO CHECK THE BASIC LAYOUT STAKING.



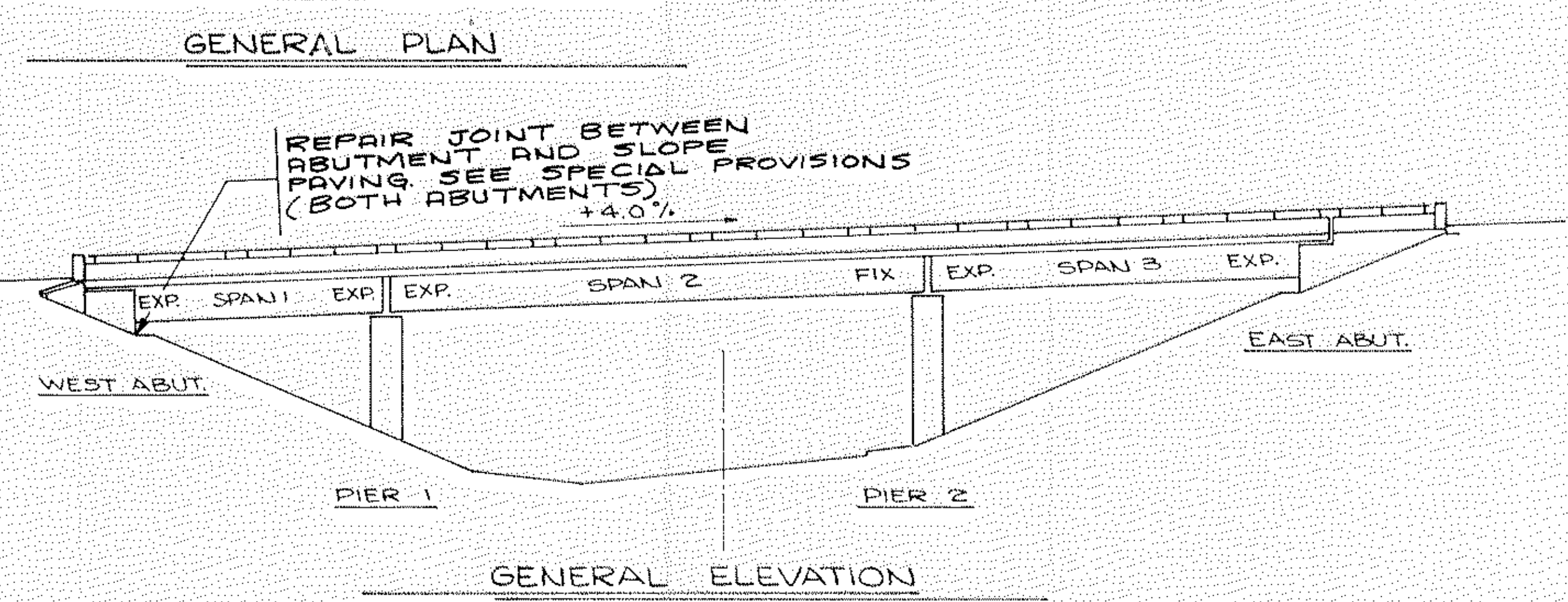
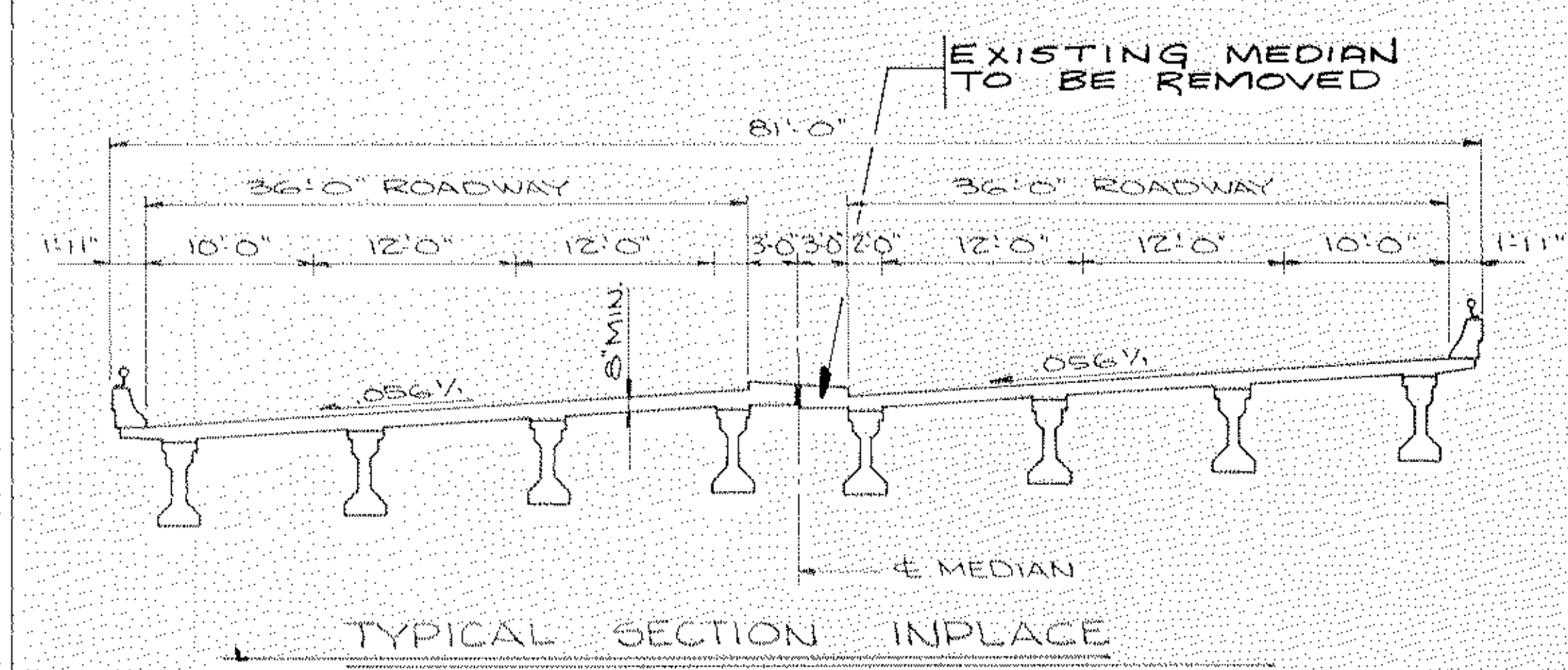
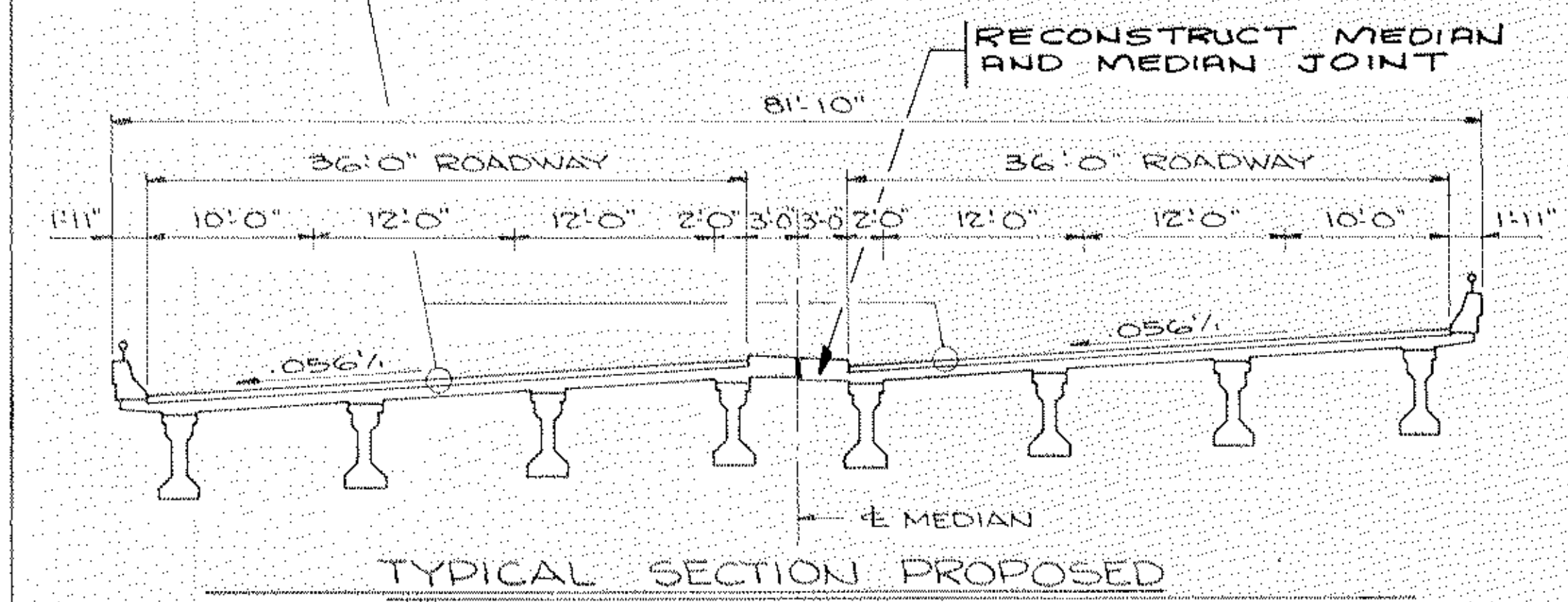
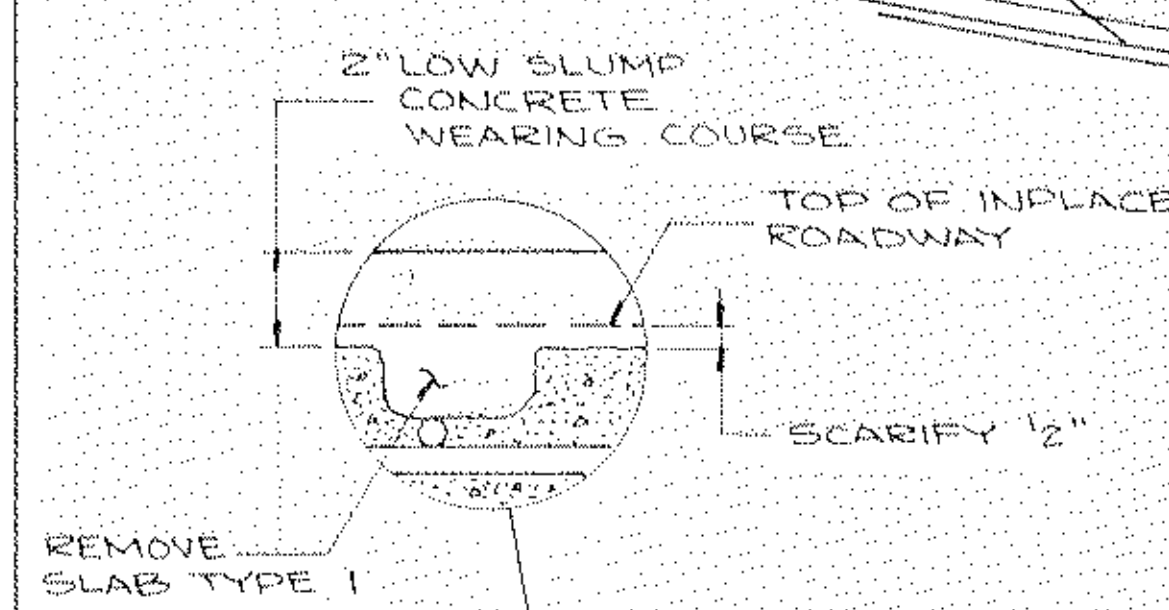
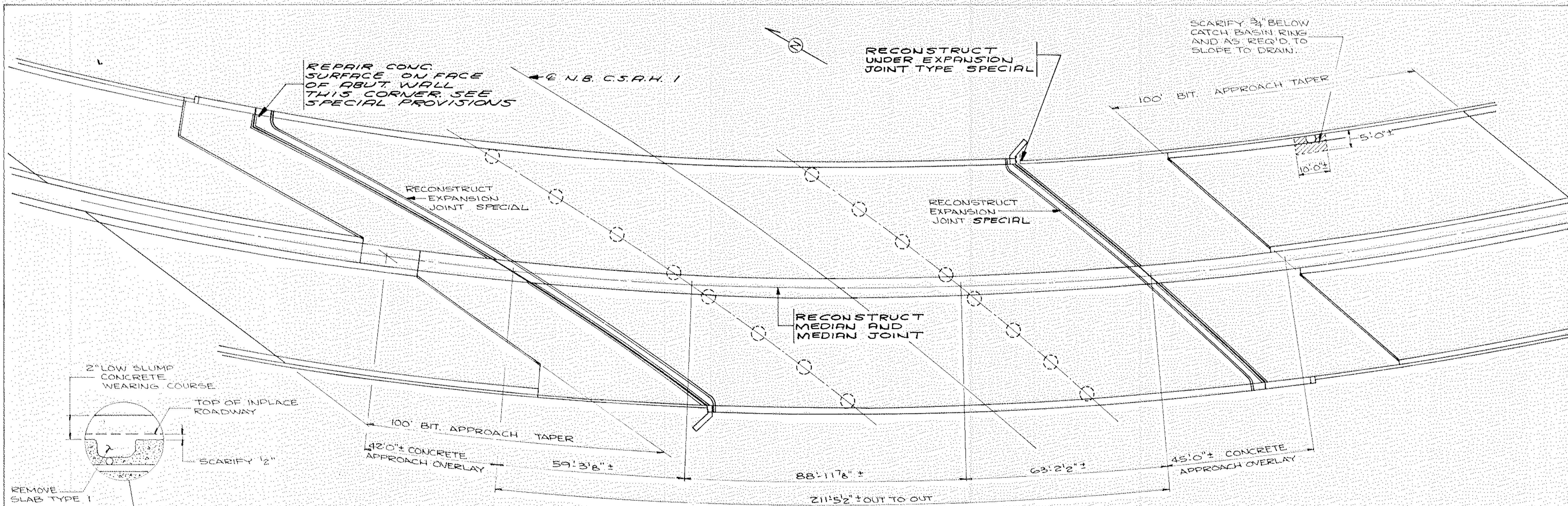
POINT	STATION	DIMENSIONS BETWEEN WORKING POINTS												ELEVATIONS			
		A(4)	B(5)	C(6)	D(7)	E(8)	F(11)	G(12)	H(13)	I(2)	J(3)	K(9)	L(5)	TOP OF SLAB EL.	SLAB TO D.R. SEAT	BRIDGE SEAT EL.	
A(4)	264 + 95.84																
B(5)	265 + 70.70	72.43												877.94	6.07	871.87	
C(6)	266 + 80.18		105.90											880.93	6.10	874.83	
D(7)	267 + 47.81			65.44										885.31	6.10	879.21	
E(8)	265 + 95.24	106.14												888.02	6.07	881.95	
F(11)	266 + 41.90	148.59	79.71				46.85										
G(12)	267 + 30.09			61.91					64.19								
H(13)	267 + 92.78				60.79			88.23							62.95		
I(2)	266 + 49.31	170.21	107.92	80.17													
J(3)	266 + 92.14	209.47	142.11	74.96	92.58	103.99		62.47						887.66	6.07	881.59	
K(9)	267 + 69.00	282.25	211.33	115.56	76.97			134.05	53.69		44.21			889.37	6.10	883.27	
L(5)	268 + 21.93		261.30	159.76	104.70				100.13	43.94				892.45	6.10	886.35	
														894.57	6.07	888.50	

TITLE: BRIDGE LAYOUT

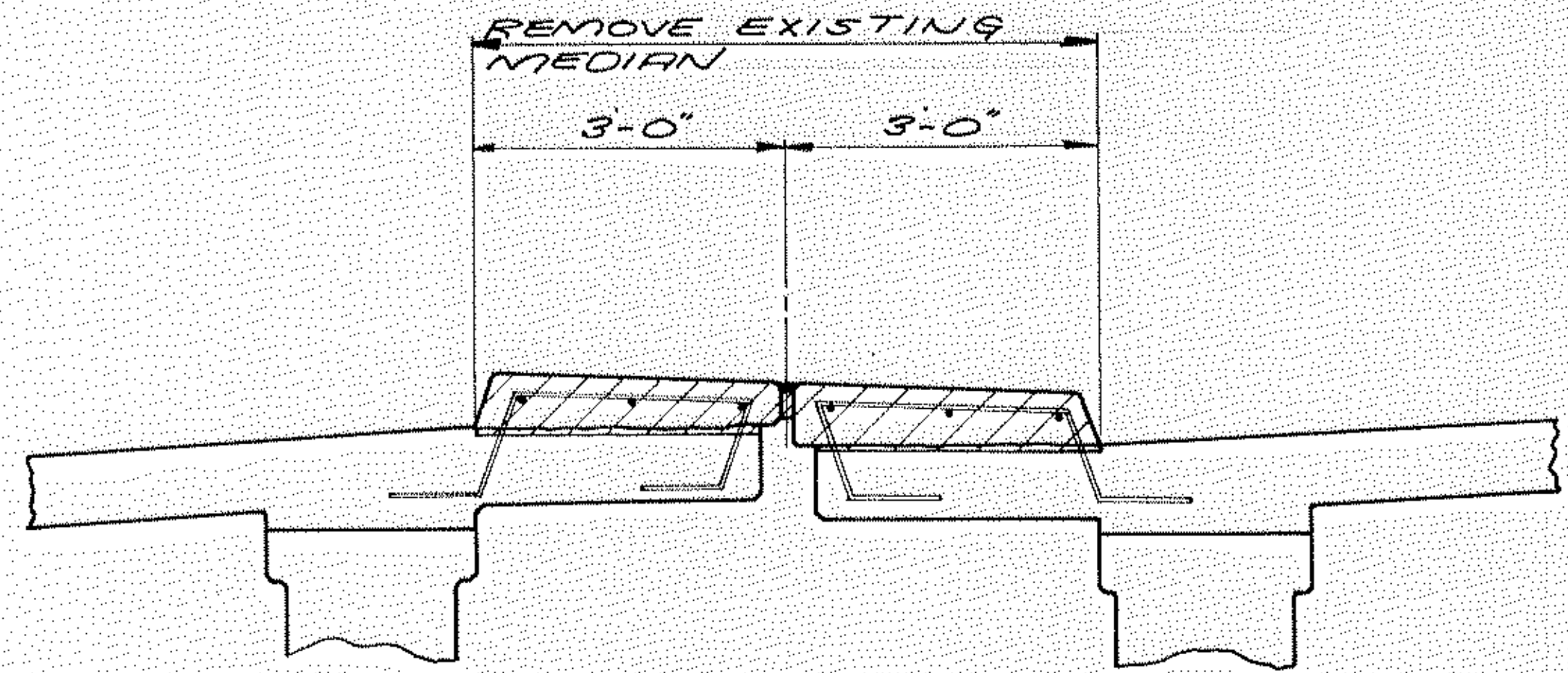
DES. R.M.S. DR. W.K. APPROVED: [Signature]
CHK. M.O.D. CHK. R.M.S.
Sheet No. 2 of 35 Sheets Bridge No. 02522



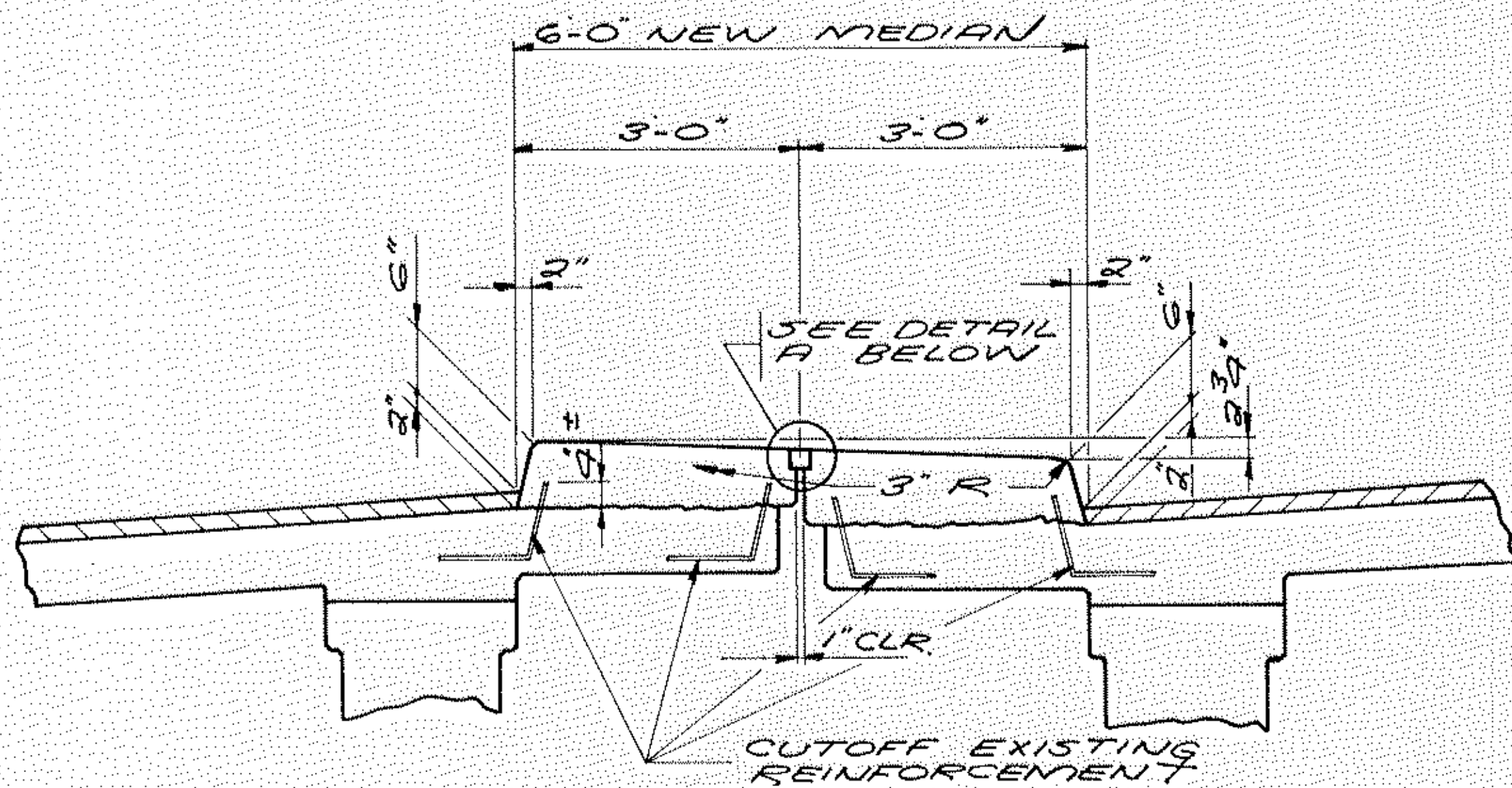
GENERAL PLAN & ELEVATION		DES:	DR. R.H.	APPROVED	BRIDGE NO. 02521
C.S.A.H. 3 (COON RAPIDS BLVD. BY-PASS) OVER BURLINGTON NORTHERN R.R. IN COON RAPIDS		CHK:	CHK:		
SHEET NO. 2 of 13 SHEETS					



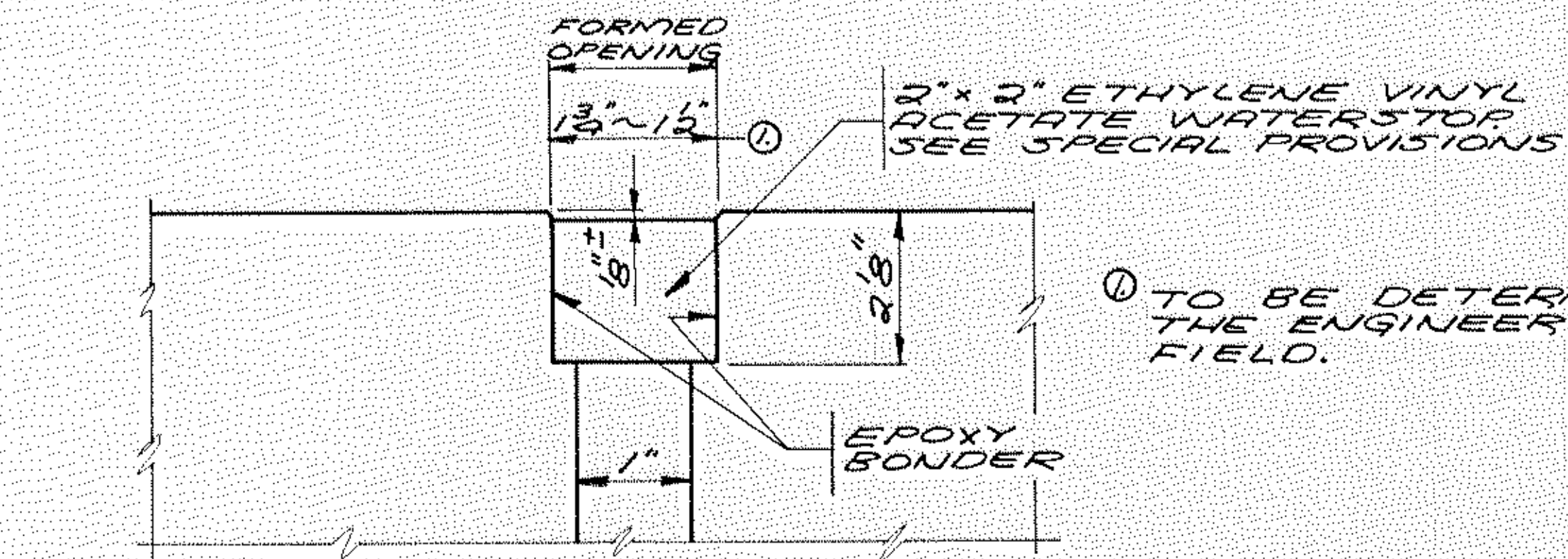
GENERAL PLAN & ELEVATION		DES:	DR. R.W.	APPROVED:	BRIDGE NO. 02522
C.S.A.H. 3 (COON RAPIDS BLVD. BY-PASS) OVER EAST RIVER RD. N.B. (C.S.A.H. 1) IN COON RAPIDS.		CHK:	CHK:		
SHEET NO. 3 of 13 SHEETS					



REMOVAL OF EXISTING MEDIAN



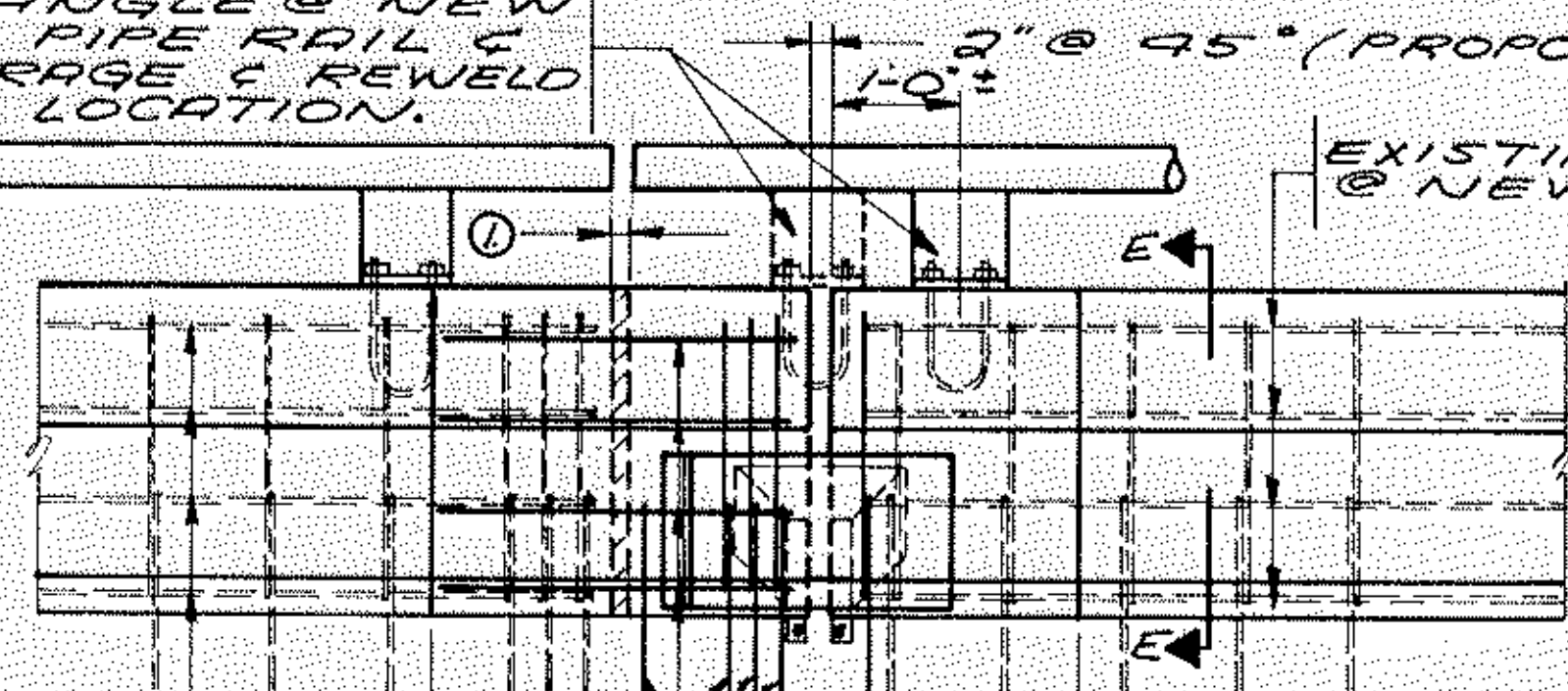
RECONSTRUCT NEW MEDIAN



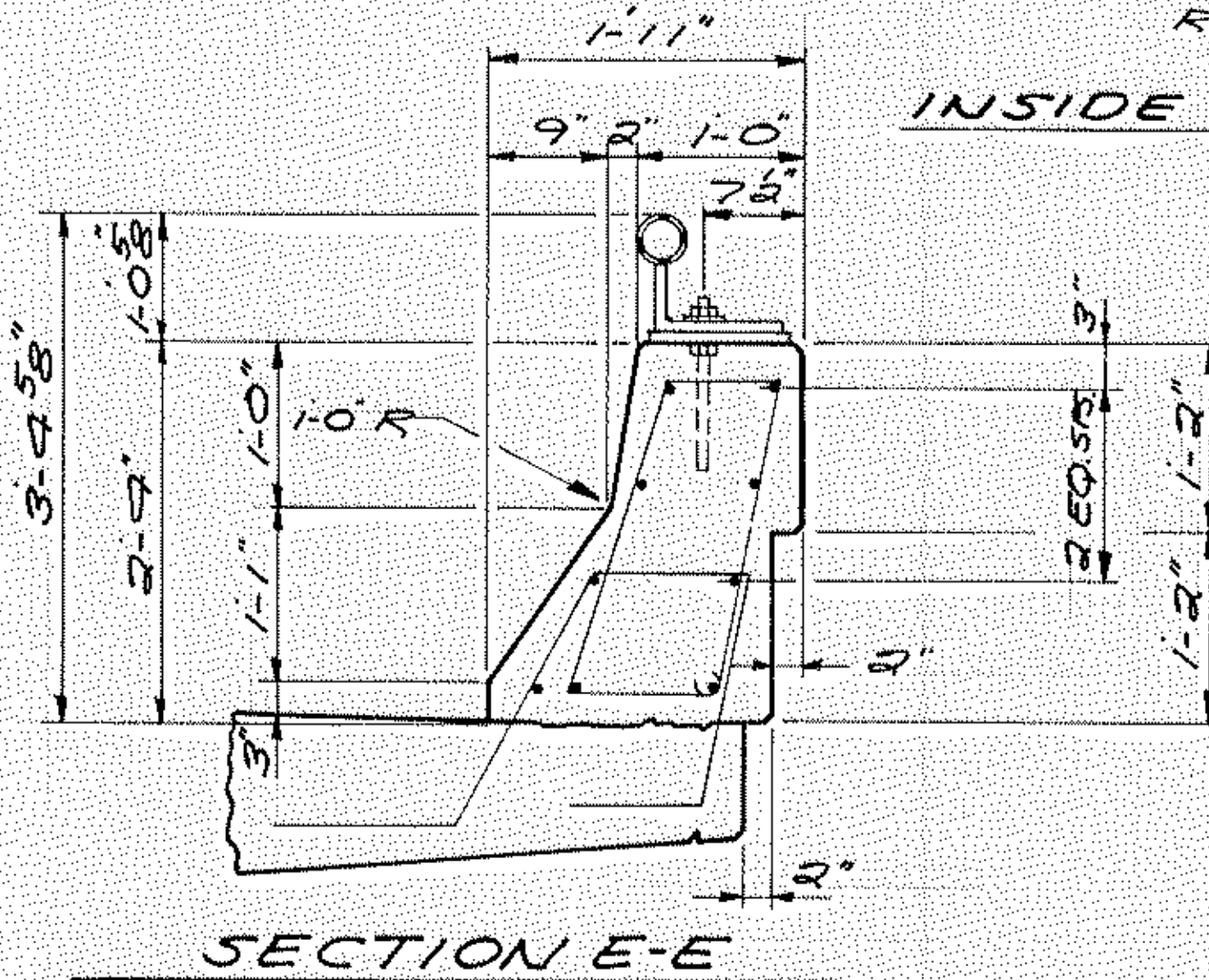
DETAIL A - VINYL ACETATE WATERSTOP
NO SCALE

CUT EXISTING ANGLE @ NEW OPENING FROM PIPE RAIL & RESET ANCHORAGE & REWELD TO PIPE @ NEW LOCATION. REPAIR RAIL ANGLE WITH GALVA STICK.

① EXISTING EXP MAT TO BE REMOVED.

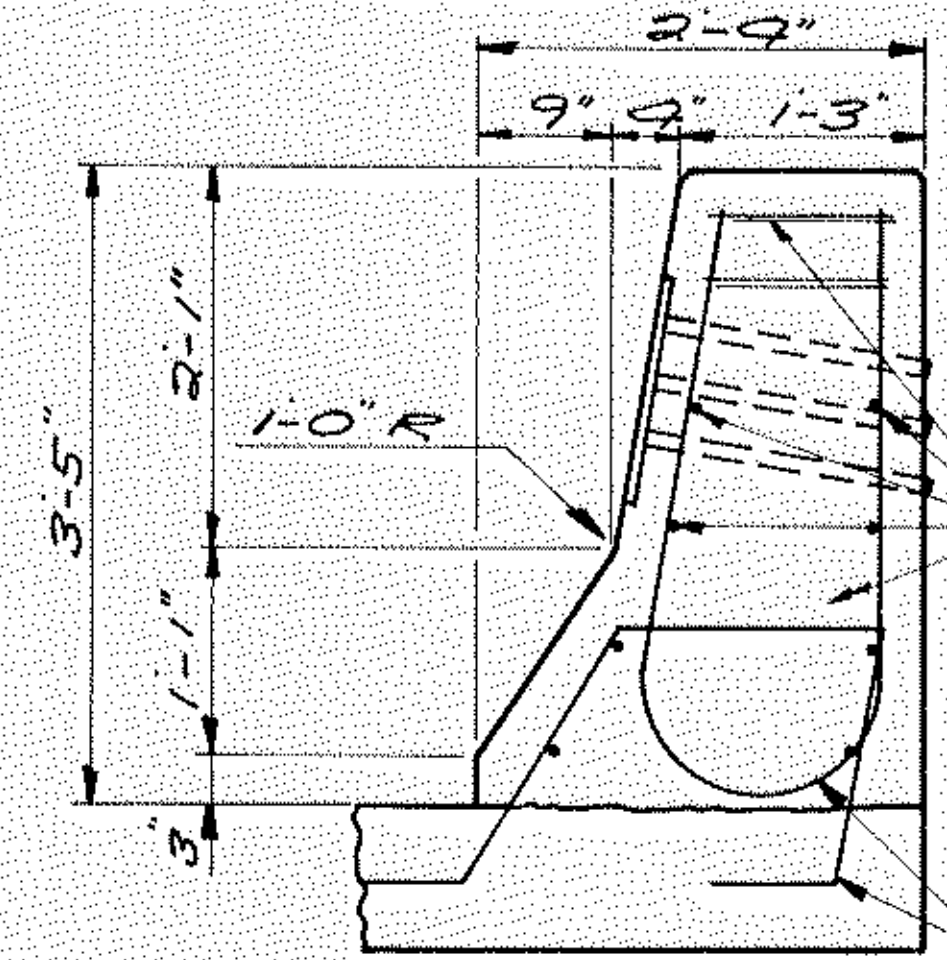


INSIDE RAIL ELEVATION @ N.W & S.E. CORNERS
BR. NO. 02522

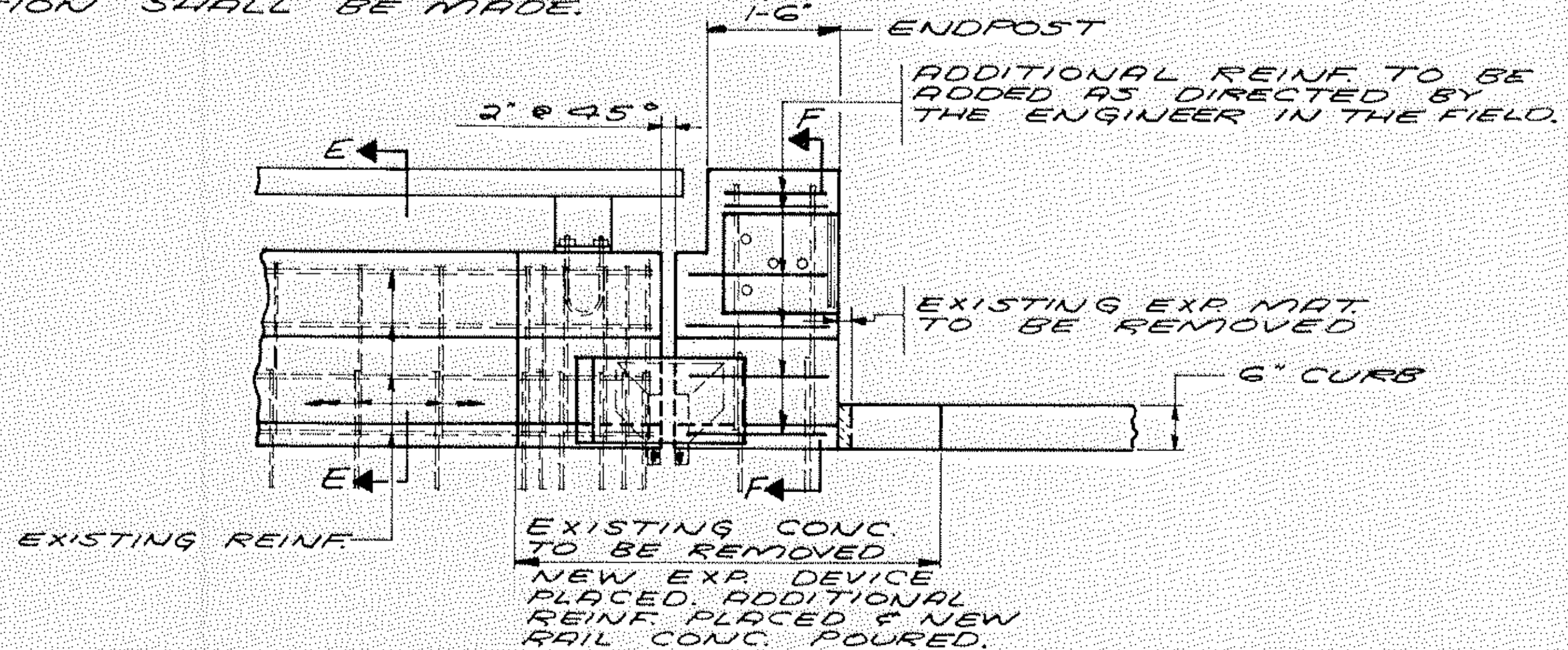


SECTION E-E

NOTE:
ALL CONC., REINF. & ETC. NEEDED TO REPAIR RAILINGS WHERE NEW EXP. DEVICES HAVE BEEN INSTALLED SHALL BE INCIDENTAL TO PAY ITEM "RECONSTRUCT EXP. JT. DEVICE SPECIAL". NO DIRECT COMPENSATION SHALL BE MADE.



SECTION F-F
AT ENDPST



TYR. INSIDE RAIL ELEVATION @ CORNERS WITH ENDPST

MEDIAN & RAILING DETAILS	DRAWN D.J.V.	CHECKED R.R.T.	APPROVED	BRIDGE NUMBERS 02521 & 02522
SHEET 11 OF 13 SHEETS				