

STATE OF MINNESOTA
 DEPARTMENT OF HIGHWAYS
 Plan and Profile of State Road No. 02-54-10
 ANOKA COUNTY

A POINT 464.2' NORTH OF THE EAST 1/4 COR. A POINT 20' SOUTH OF THE S.E. COR.
 From SEC. 33, T. 31-N., R. 24-W. To SEC. 1, T. 31-N., R. 24-W.

GROSS LENGTH 23,315.9 FEET 4.419 MILES
 LENGTH OF EXCEPTIONS 0.18 FEET 0.003 MILES
 NET LENGTH 23,220.0 FEET 4.412 MILES

PLAN 1 Inch = 100 Feet
 PROFILE Horiz. 1 Inch = 100 Feet, Vert. 1 Inch = 10 Feet
 WORKING PLANS Horiz. 1 Inch = 100 Feet, Vert. 1 Inch = 10 Feet
 Cross-Section, 1 Inch = 10 Feet

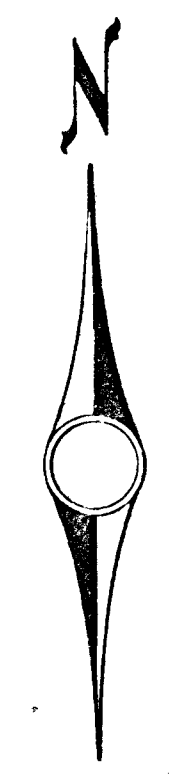
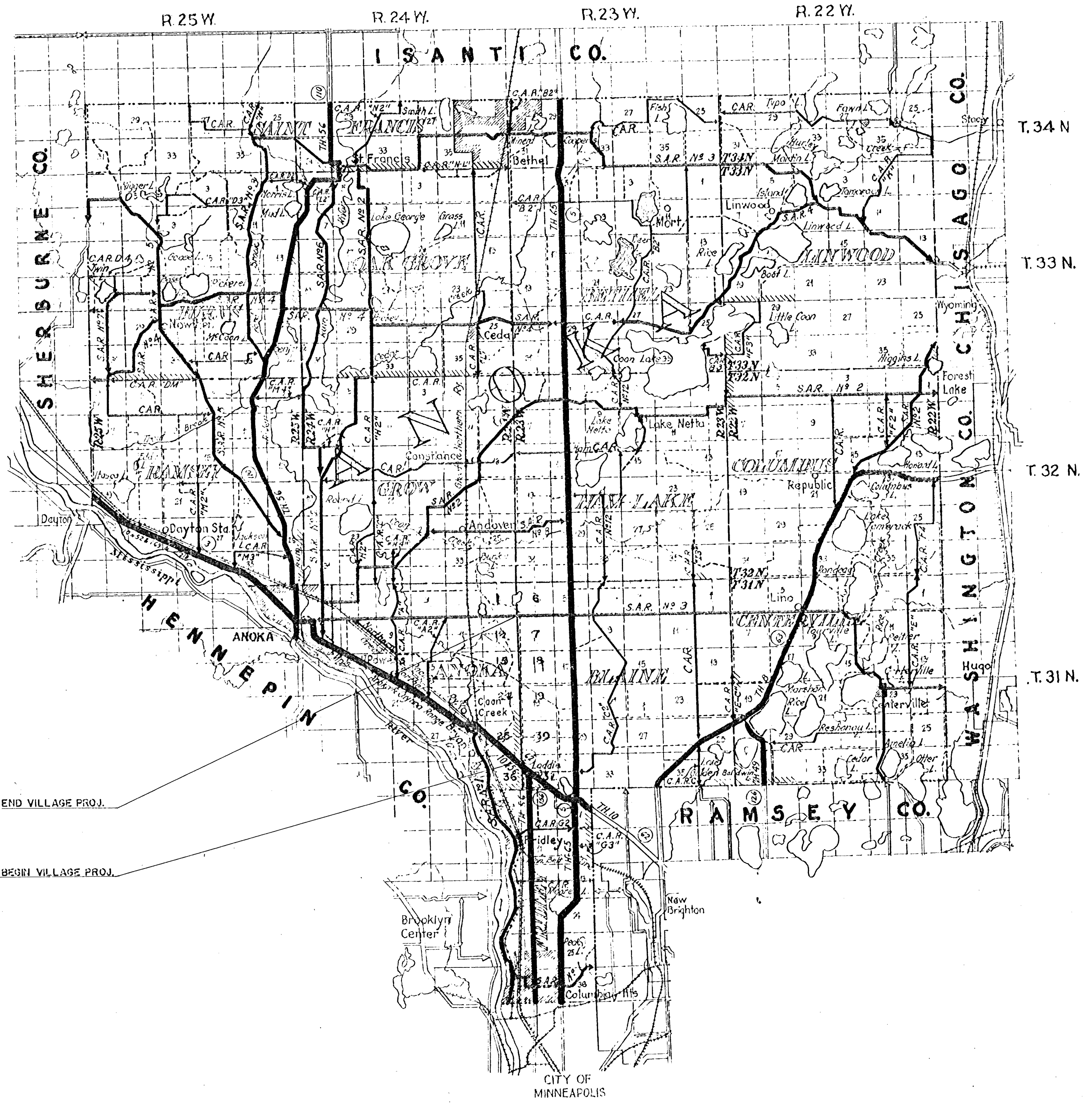
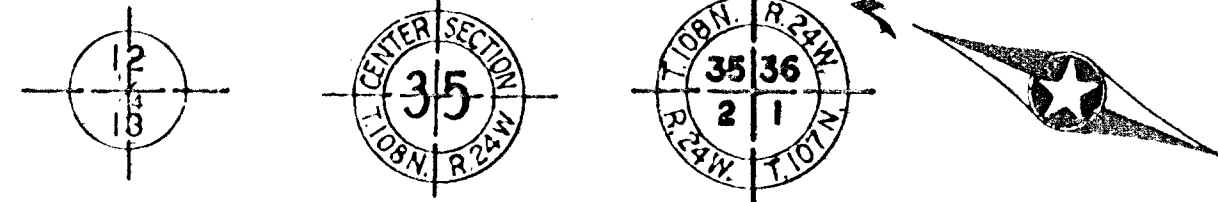
LAYOUT
 Scale 1 Inch = 10560 Feet

INDEX OF SHEETS
 Sheet No. 1. Title Sheet and Layout Map
 No. 2. Typical Cross-Sections and Statement
 No. 3-7 Plan and Profile, Sta. 0+29 to Sta. 23+35.80
 No. 8-23 CROSS-SECTIONS STA. 0+20 TO STA. 23+35.80

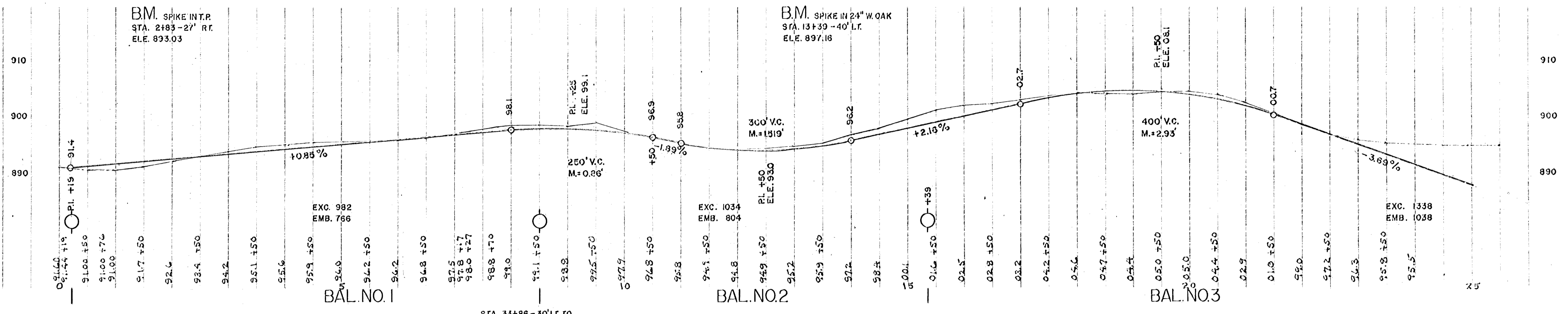
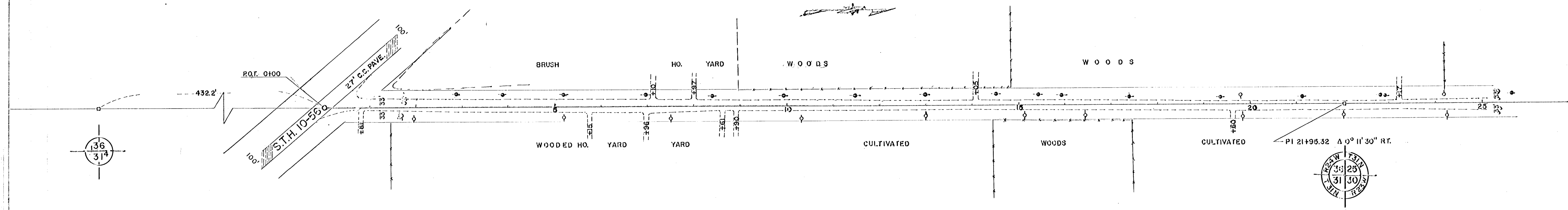
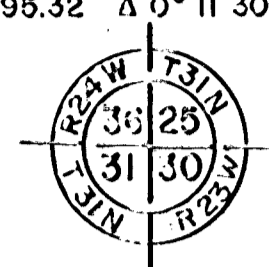
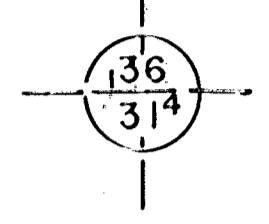
"THE SPECIFICATIONS FOR HIGHWAY CONSTRUCTION DATED JULY 1, 1947 AND SUBMITTED FOR APPROVAL BY THE DIVISION ENGINEER OF THE BUREAU OF PUBLIC ROADS ON OCTOBER 15, 1947, AS MODIFIED BY 'SUPPLEMENT I' THERE TO DATED APRIL 15, 1953 AND SUBMITTED FOR APPROVAL BY THE DIVISION ENGINEER OF THE BUREAU OF PUBLIC ROADS ON MARCH 25, 1953, SHALL GOVERN."

CONVENTIONAL SIGNS	ABBREVIATIONS
STATE LINE	EXCAVATION EXC.
COUNTY LINE	EARTH E
TWP OR RANGE LINE	LOOSE ROCK L.R.
SECTION LINE	SOLID ROCK S.R.
RIGHT OF WAY LINE	EMBANKMENT E.M.
CORPORATE OR CITY LIMITS	OVERHAUL O.V.
ROAD CENTER LINE	SURFACING S.
RETAINING WALL	HAND DITCHING H.D.
RAILROADS	SPECIAL EXCAVATION S.E.
CREEK	SPECIAL PLOWING S.P.
DRY RUN	GUARD RAIL G.R.
DRAINAGE DITCH	CORRUGATED METAL CULVERT C.M.CULV.
POWER POLE LINE	SECTIONAL CONCRETE CULVERT S.C.CULV.
TELEPHONE OR TELEGRAPH LINE	SECTIONAL CONCRETE CULVERT (heavy type) R.CULV.
CULVERTS - PLAIN	TON MILES T.M.
WITH ENDWALLS	TELEPHONE POLE TEL.P.
WITH WINGWALLS	POWER POLE P.P.
DROP INLET	PLACE P.
FENCE LINE	INPLACE INP.
GRAVEL PIT	REPLACE REP.
SAND PIT	RIGHT RT.
CLAY PIT	LEFT LT.
ROCK QUARRY	INTERSECTION ANGLE I.A.
SPRINGS	RADIUS R.
MARSH	TANGENT T.
BRUSH OR TIMBER	LENGTH OF CURVE L.C.
HEDGE	POINT OF CURVE P.C.
ROCK LEDGE	POINT OF TANGENT P.T.
SAND	POINT OF INTERSECTION P.I.
EDGE OF CUT	VERTICAL CURVE V.C.
TOE OF EMBANKMENT	BENCH MARK B.M.
RAILROAD R/W LINE	ELEVATION EL.
BUILDINGS (One-Story Frame)	ACRES A.

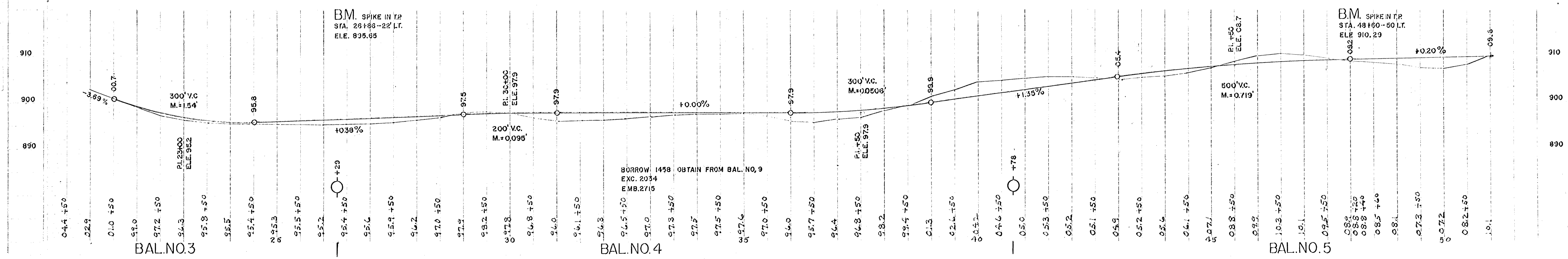
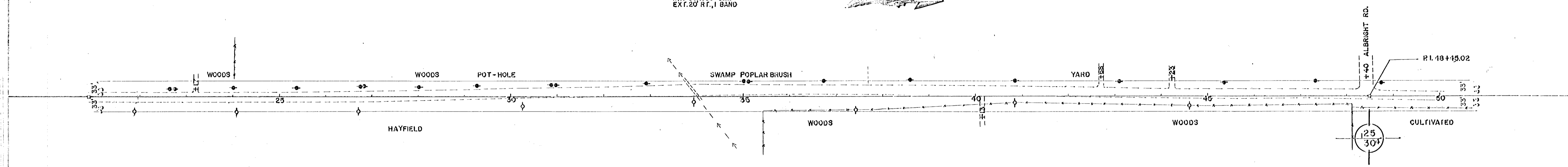
NOTE: SECTION NUMBERS READ FROM THE SOUTH



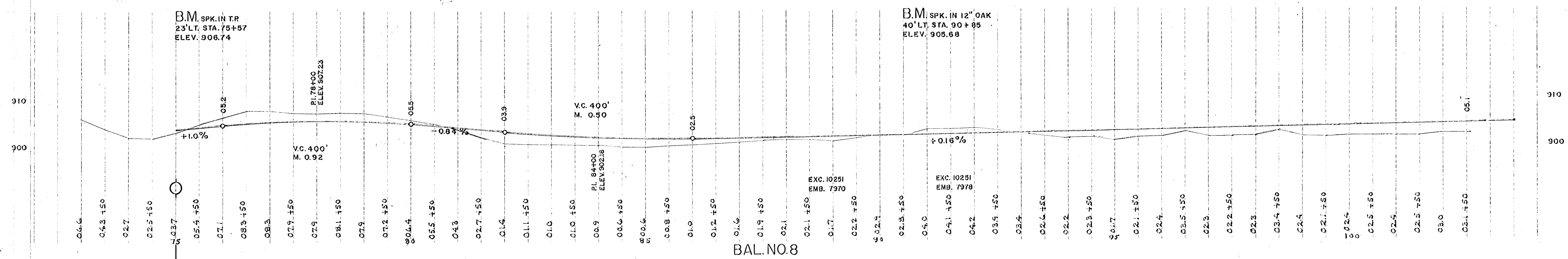
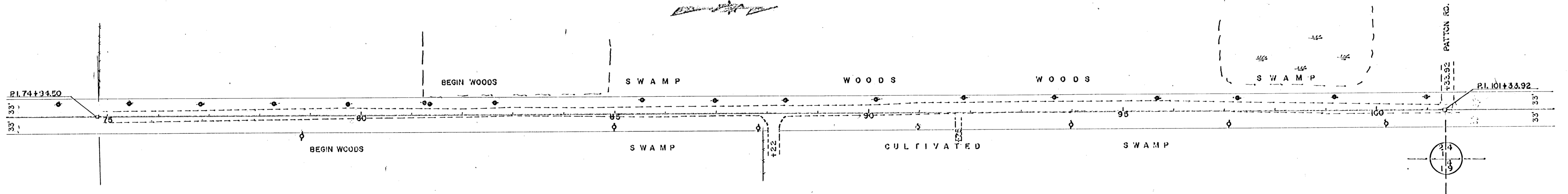
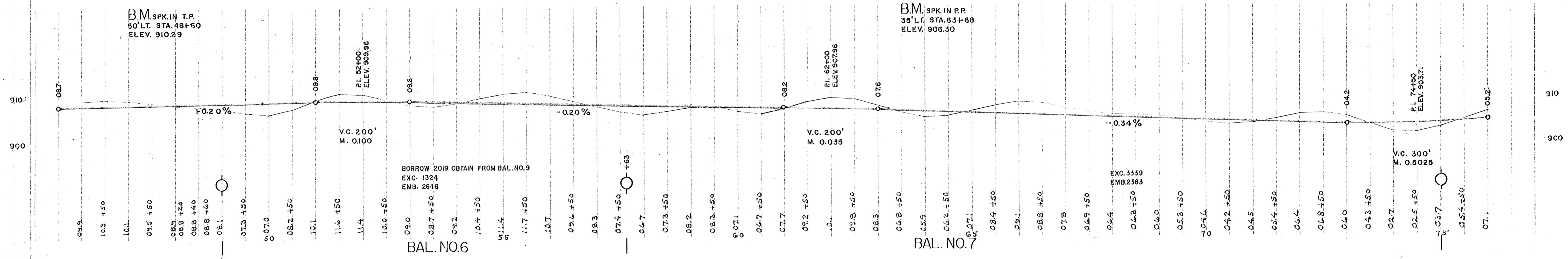
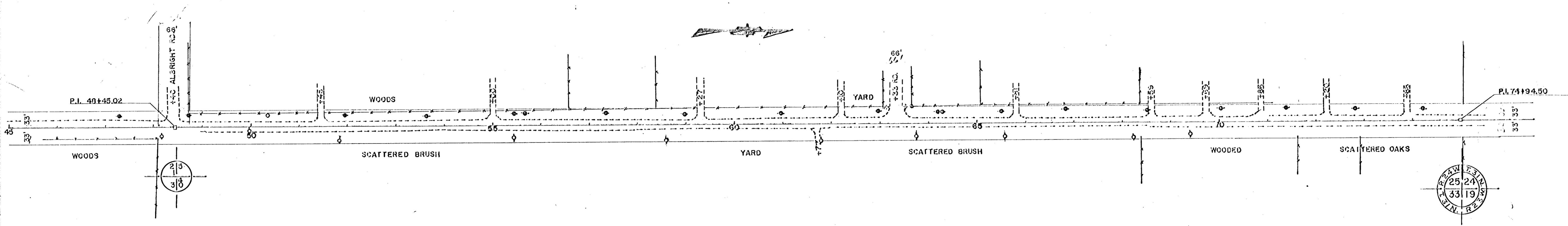
Recommended for Approval _____
 HIGHWAY ENGINEER FOR ANOKA COUNTY
 Recommended for Approval _____
 MAYOR OF COON RAPIDS
 Recommended for Approval _____
 MAYOR OF VILLAGE OF BLAINE
 Approved _____ 19

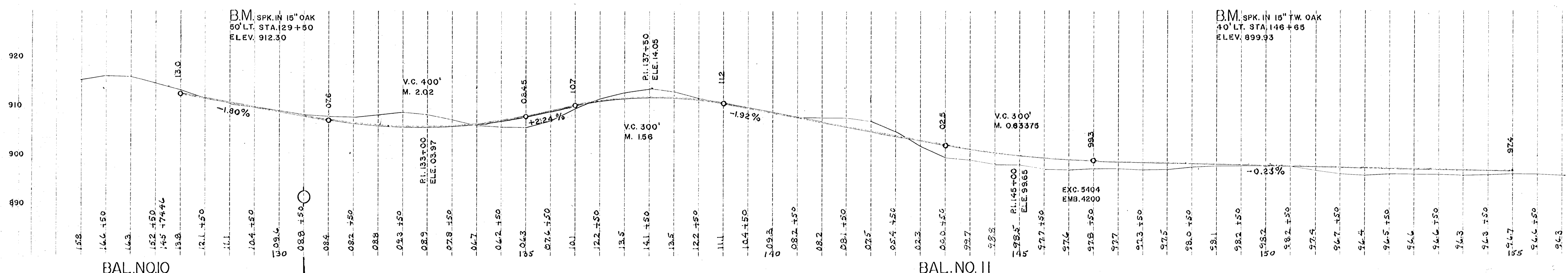
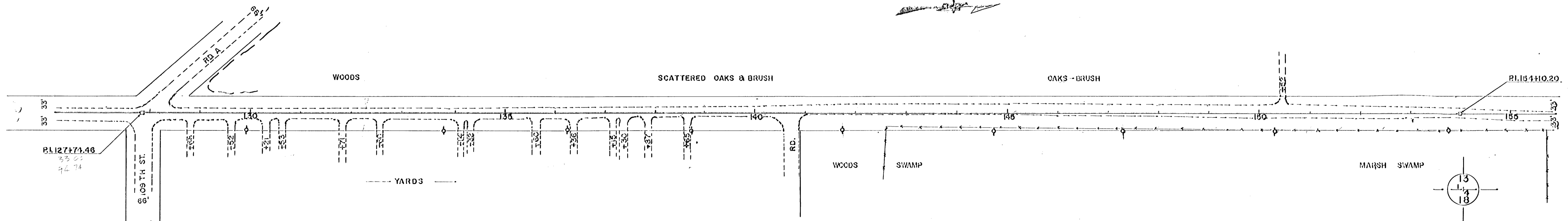
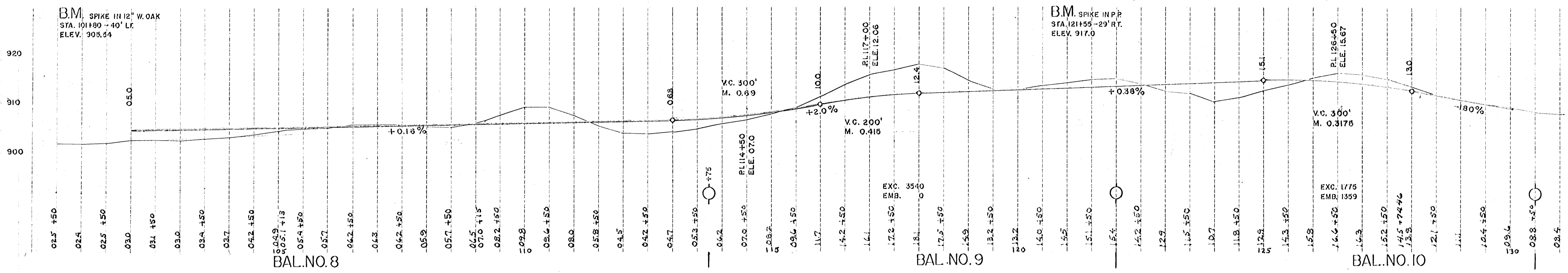
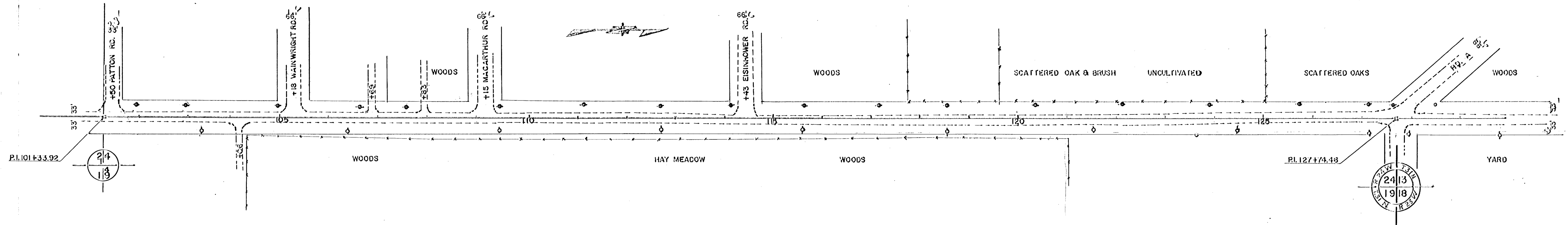


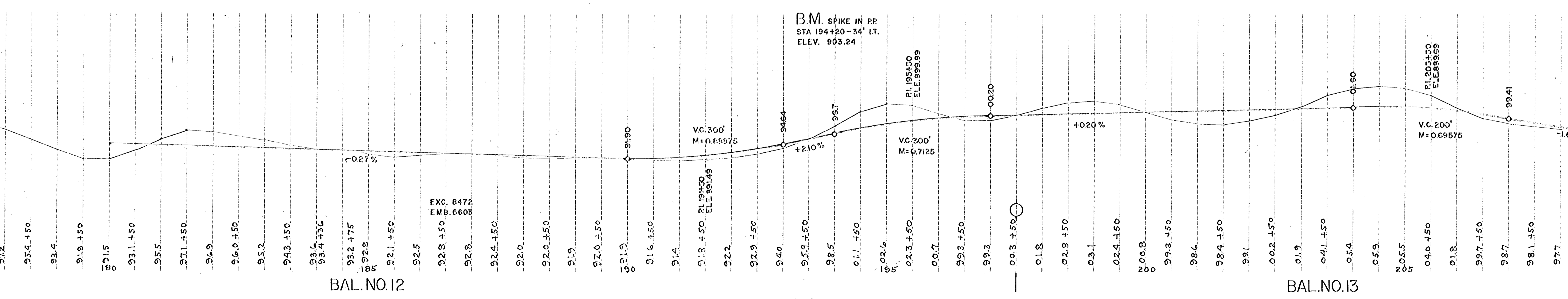
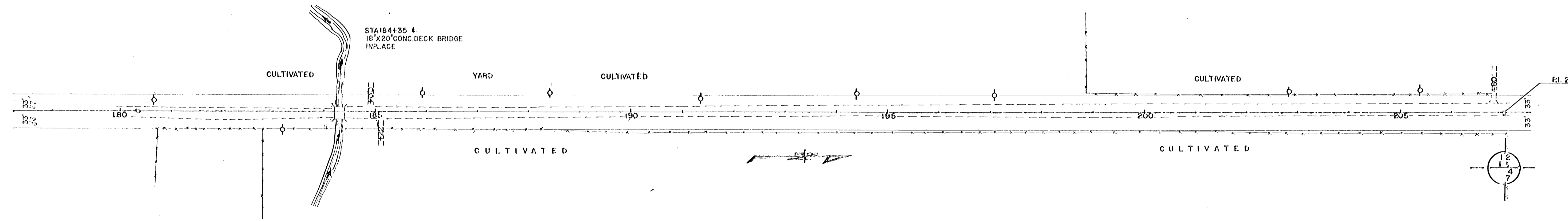
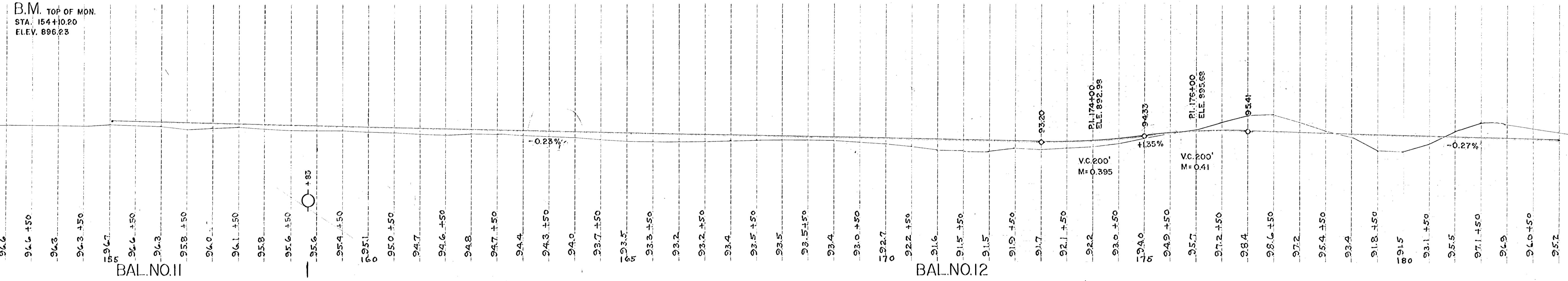
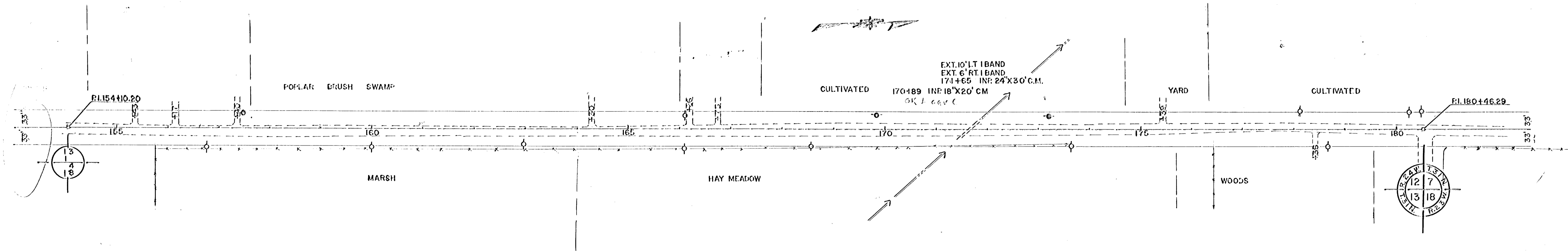
STA. 33+86 - 30' LT. TO
 STA. 34+07 - 07' RT.
 IN R. 36" X 36" C.M.
 EXT. 20' RT. 1 BAND



University Ext.

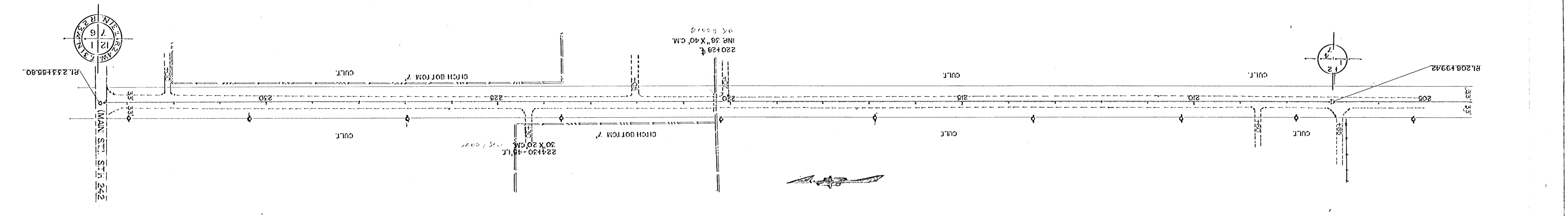
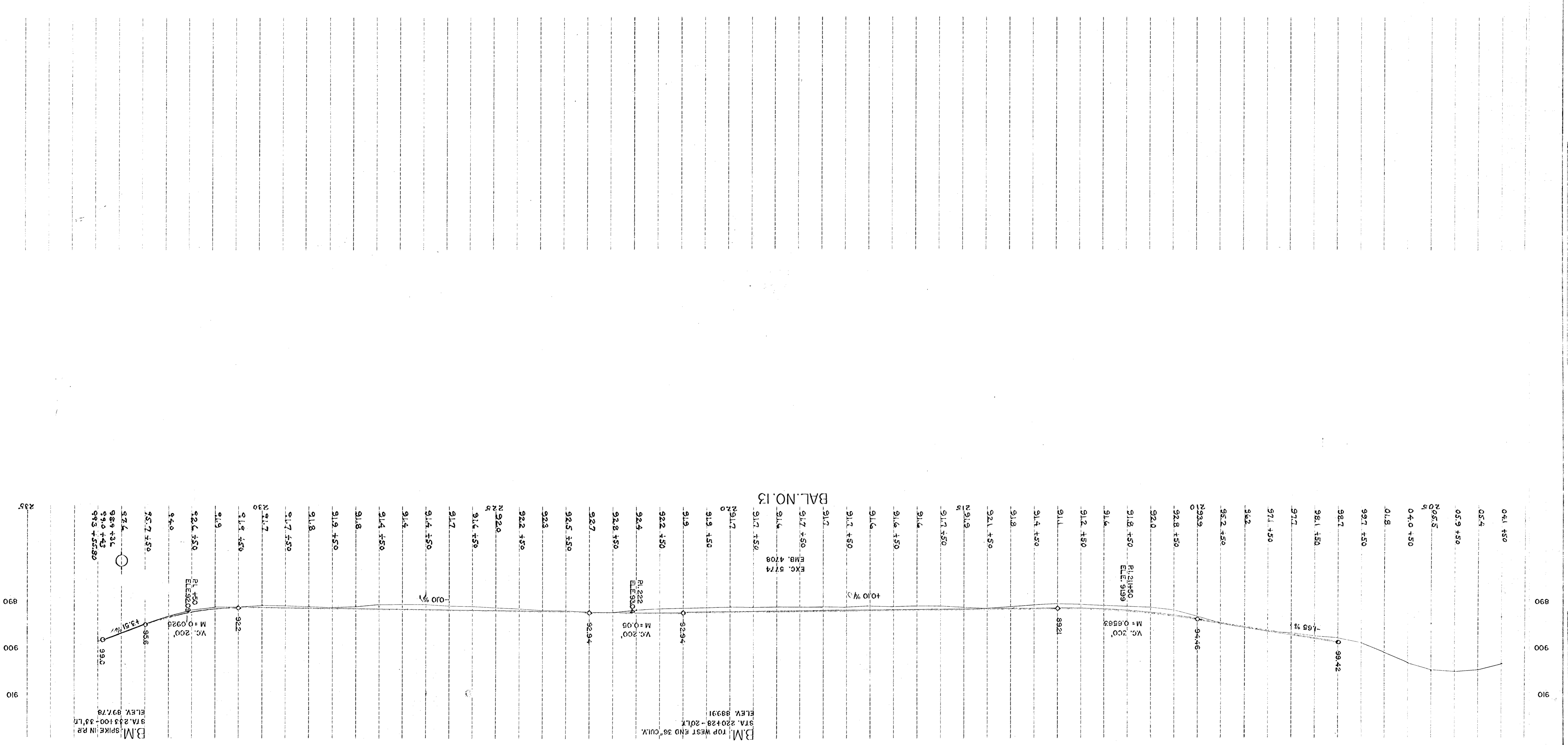






FLAME PAPER, 22 POUNDS PER REAM, 100% COTTON FIBER

University Ex



11/15/13