

STATEMENT OF ESTIMATED QUANTITIES

ITEM NO.	ITEM	UNIT	TOTAL ESTIMATED QUANTITIES
2101.502	CLEARING	TREE	47
2101.507	GRUBBING	TREE	47
2104.501	REMOVE CURB AND GUTTER	LIN. FT.	561
2104.501	REMOVE SEWER PIPE	LIN. FT.	403
2104.503	REMOVE SIDEWALK	SQ. FT.	8,436
2104.505	REMOVE CONCRETE PAVEMENT	SQ. YD.	248
2104.509	REMOVE MANHOLES AND CATCH BASINS	EACH	6
2104.509	REMOVE CONC. STEPS	EACH	1
2104.521	SALVAGE FENCE	LIN. FT.	3,246
2104.521	SALVAGE SEWER PIPE	LIN. FT.	554
2104.521	SALVAGE CULVERT PIPE	LIN. FT.	51
2104.523	SALVAGE CASTINGS	EACH	6
257.504	INSTALL FENCE	LIN. FT.	3,233
2105.501	COMMON EXCAVATION	CU. YD.	20,048
2105.505	MUCK EXCAVATION (EV.)	CU. YD.	4,705
2105.521	GRANULAR BORROW (EV.)	CU. YD.	10,000
2105.531	SALVAGED BITUMINOUS MIXTURE (EV.)	CU. YD.	3,343
2130.501	WATER	A - GAL.	200
2207.503	BITUMINOUS MATERIAL FOR MIXTURE	GALLON	162,400
2207.512	BITUMINOUS STABILIZED SUBGRADE 6" THICK	SQ. YD.	52,365
2211.501	AGGREGATE BASE, CLASS 5	TON	136
2341.504	BITUMINOUS MATERIAL FOR MIXTURE	TON	262
2341.510	BINDER COURSE MIXTURE	TON	5,840
2351.504	ASPHALT CEMENT	TON	330
2351.509	WEARING COURSE MIXTURE	TON	4,700
2357.502	BITUMINOUS MATERIAL FOR TACK COAT	GALLON	2,360
2503.511	12" R.C. PIPE SEWER CL. 4	LIN. FT.	838
2503.511	15" R.C. PIPE SEWER CL. 2	LIN. FT.	490
2503.511	15" R.C. PIPE SEWER CL. 4	LIN. FT.	393
2503.511	18" R.C. PIPE SEWER CL. 2	LIN. FT.	448
2503.511	21" R.C. PIPE SEWER CL. 2	LIN. FT.	187
2503.511	21" R.C. PIPE SEWER CL. 4	LIN. FT.	374
2503.511	24" R.C. PIPE SEWER CL. 2	LIN. FT.	730
2503.511	24" R.C. PIPE SEWER CL. 4	LIN. FT.	767
2503.511	27" R.C. PIPE SEWER CL. 3	LIN. FT.	887
2503.511	30" R.C. PIPE SEWER CL. 4	LIN. FT.	750
2503.511	48" R.C. PIPE SEWER CL. 4	LIN. FT.	142
2501.515	8" R.C. CONC. APRON	EACH	2
2501.515	24" R.C. CONC. APRON	EACH	2
2501.515	30" R.C. CONC. APRON	EACH	1
2506.506	CONSTRUCT MANHOLES DESIGN A OR F	LIN. FT.	23.0
2506.506	CONSTRUCT MANHOLES DESIGN C OR G	LIN. FT.	32.3
2506.507	CONSTRUCT CATCH BASINS DESIGN A OR F	LIN. FT.	24.6
2506.507	CONSTRUCT CATCH BASINS DESIGN C OR G	LIN. FT.	4.1
2506.507	CONSTRUCT CATCH BASIN DESIGN I	LIN. FT.	29.9
2506.507	CONSTRUCT CATCH BASINS DESIGN 2	LIN. FT.	27.6
2506.511	RECONSTRUCT MANHOLES	LIN. FT.	0.7
2506.516	CASTING ASSEMBLIES	EACH	56
2506.521	INSTALL CASTINGS	EACH	1
2506.522	ADJUST FRAME AND RING CASTINGS	EACH	28
504.685	ADJUST WATER GATE HOUSINGS	HOUSINGS	33
2521.501	4" CONCRETE WALK	SQ. FT.	31,500
2521.501	6" CONCRETE WALK	SQ. FT.	6,470
2521.501	8" CONCRETE WALK	SQ. FT.	1,275
2461.501	CONCRETE, MIX NO. 3A32	CU. YD.	1
2531.501	CONC. CURB AND GUTTER, DESIGN B - 618	LIN. FT.	14,080
2531.507	6" CONC. DRIVEWAY PAVEMENT	SQ. YD.	237
2531.507	7" CONC. DRIVEWAY PAVEMENT	SQ. YD.	36
2545.521	3" RIGID STEEL CONDUIT	LIN. FT.	240
2575.501	ROADSIDE SEEDING	ACRE	2
2575.502	SEED MIXTURE 5	POUND	100
2575.505	SODDING	SQ. YD.	4,225
2575.511	MULCH MATERIAL, TYPE 1	TON	4
2575.531	COMMERCIAL FERTILIZER ANALYSIS 10 - 10 - 10	TON	0.5
2575.551	TOPSOIL BORROW	CU. YD.	1,055

1 INCLUDES 11,084 CU. YD. SUBCUT FOR COMPACTION  
 2 INCLUDES 87 TON FOR DRIVEWAY REPLACEMENT  
 3 FOR CONSTRUCTION OF CONCRETE STEPS  
 4 FOR CONSTRUCTION OF CONCRETE CROSS GUTTER 47-88 LT.  
 5 FOR FUTURE SIGNALS AT 38 TH. AVE.  
 6 FOR REPAIR OF DRIVEWAYS

ESTIMATED QUANTITIES FOR CITY SANITARY SEWER AND WATERMAIN IMPROVEMENT

ITEM NO.	ITEM	UNIT	QUANTITY
CS - 7.1	8" V.C.P. SEWER 8' - 12' DEEP	LIN. FT.	360
CS - 7.2	CONSTRUCT MANHOLE	UNIT	1
CS - 7.3	CASTING ASSEMBLY	ASSEMB.	1
CS - 7.4	F. & J. 4" ON 8" AYES	EACH	2
CS - 7.5	CRUSHED ROCK FOR PIPE STABILIZATION	TON	10
CW - 3.1	F. & J. 6" C.I.P. WATERMAIN	LIN. FT.	375
CW - 3.2	F. & J. 6" C.I. FITTINGS & SMALLER	LB.	405
CW - 3.3	F. & J. FIRE HYDRANT	EACH	1
CW - 3.3	F. & J. 6" GATE VALVES AND BOXES	EACH	4
CW - 3	CUT INTO AND CONNECT INTO EXISTING WATERMAIN	EACH	3
CW - 3.5	MOVE FIRE HYDRANT	EACH	6
CW - 3.5	MOVE CURB STOPS	EACH	12
CW - 3.6	MOVE CURB STOPS AND REPLACE STEEL WITH 1" COPPER	UNIT	13

FORM 21166-10-58

The following Standard Detail plates, approved by the Bureau of Public Roads, shall apply on this project:

STANDARD DETAIL PLATES

PLATE NO.	DESCRIPTION
3000 F	REINFORCED CONCRETE PIPE.
3006 A	GASKET JOINT FOR R. C. PIPE.
3100 F	CONC. APRON FOR R. C. PIPE.
4000 G	MANHOLE OR CATCH BASIN.
4002 D	MANHOLE OR CATCH BASIN.
4005 I	MANHOLE OR CATCH BASIN.
4006 H	MANHOLE OR CATCH BASIN.
4019 B	MANHOLE OR CATCH BASIN COVER.
4101 B	RING CASTING FOR MANHOLE OR CATCH BASIN.
4108 D	MANHOLE ADJUSTING RINGS.
4110 D	COVER CASTING FOR MANHOLE.
4126 D	CATCH BASIN FRAME CASTING.
4149 C	GRATE CASTING FOR CATCH BASIN.
4161 E	CURB BOX CASTING FOR CATCH BASIN.
4180 F	MANHOLE STEP CASTING.
7036 A	PEDESTRIAN CURB RAMP.
7100 C	CONCRETE CURB AND GUTTER.
7111 D	INSTALLATION OF CATCH BASIN CASTINGS.
8000 C	STANDARD BARRICADES.
8008 D	CONTRACTORS SIGN.

COMPUTATION OF QUANTITIES

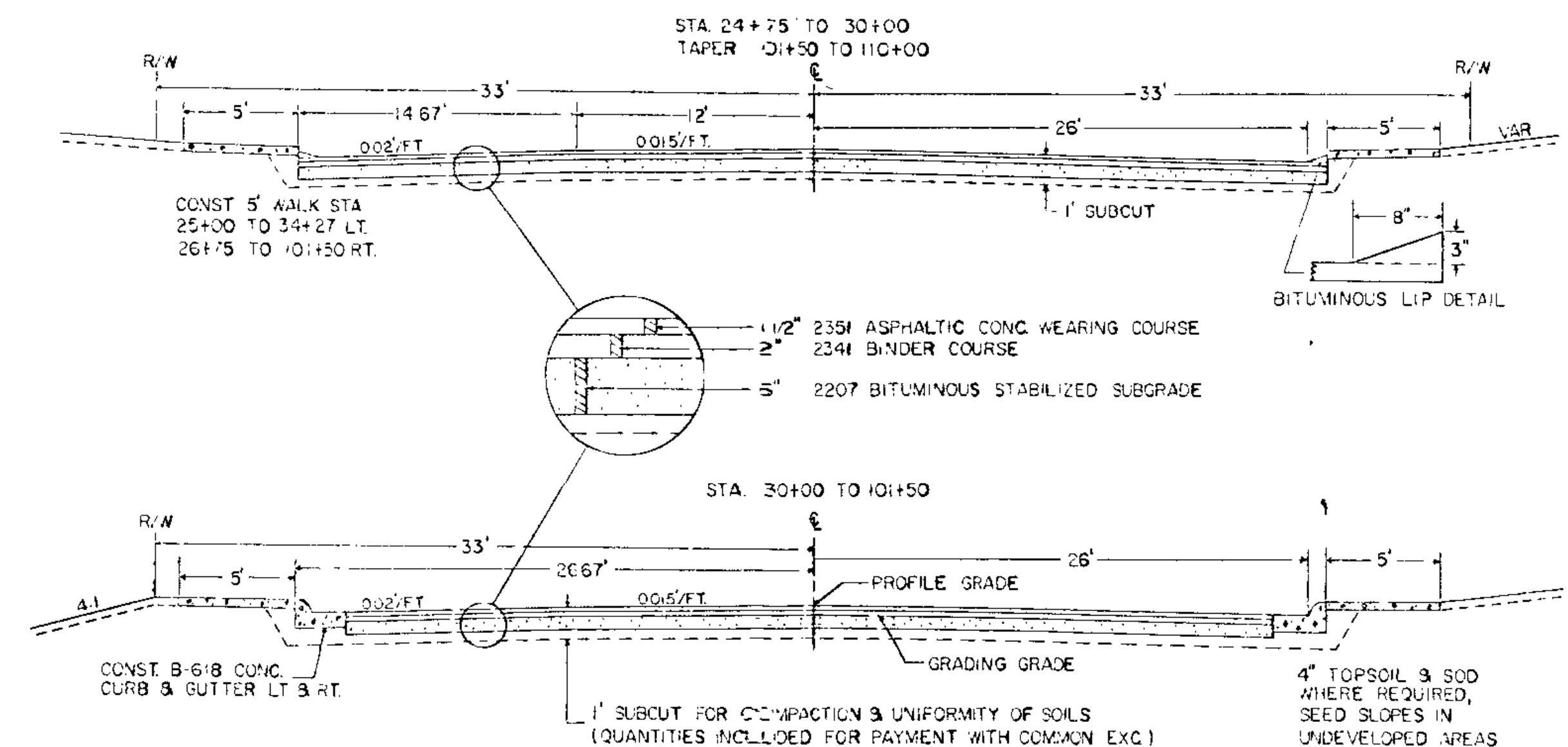
- 2207 BITUMINOUS STABILIZED SUBGRADE, BIT. MATERIAL FOR MIX 0.5 GAL. / S.Y. PER INCH THICKNESS.
- 2341 BITUMINOUS MATERIAL FOR FOG 0.10 GAL. / S.Y. PLANT MIXED BITUMINOUS BINDER COURSE.
- 2351 BITUMINOUS MATERIAL FOR MIX 4.5% OF MIXTURE BY WT. ASPHALTIC CONCRETE SURFACE.
- 2357 BITUMINOUS MIXTURE 220 LBS. PER S.Y. ASPHALT CEMENT 7% OF MIXTURE BY WT. WEARING COURSE MIXTURE 175 LBS. PER S.Y. BITUMINOUS MATERIAL FOR TACK COAT, 0.05 GAL. PER S.Y.

SPECIAL DETAILS

SALVAGED BITUMINOUS MIXTURE QUANTITIES ARE COMPUTED AS THE VOLUME OF BITUMINOUS IN ITS ORIGINAL POSITION BASED ON AVERAGE DEPTH OF 4" AND AVERAGE WIDTH OF 30". PAYMENT FOR SALVAGED BITUMINOUS MIXTURE SHALL BE MADE ON THE BASIS OF PLANKED QUANTITIES.  
 SALVAGED BITUMINOUS MIXTURE SHALL BE PLACED IN THE UPPER 3" OF THE SUBGRADE.  
 EXCESS EXCAVATION ON 7 TH. AVE. SHALL BE USED AS EMBANKMENT MATERIAL ON SCHOOL ENTRANCE LEFT STATION 81+17.

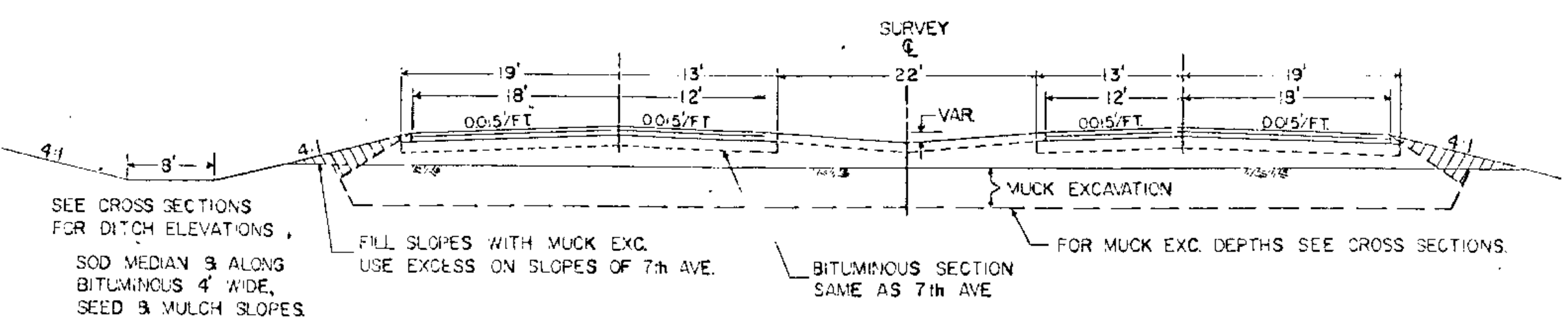
TYPICAL SECTIONS

SCALE = NONE

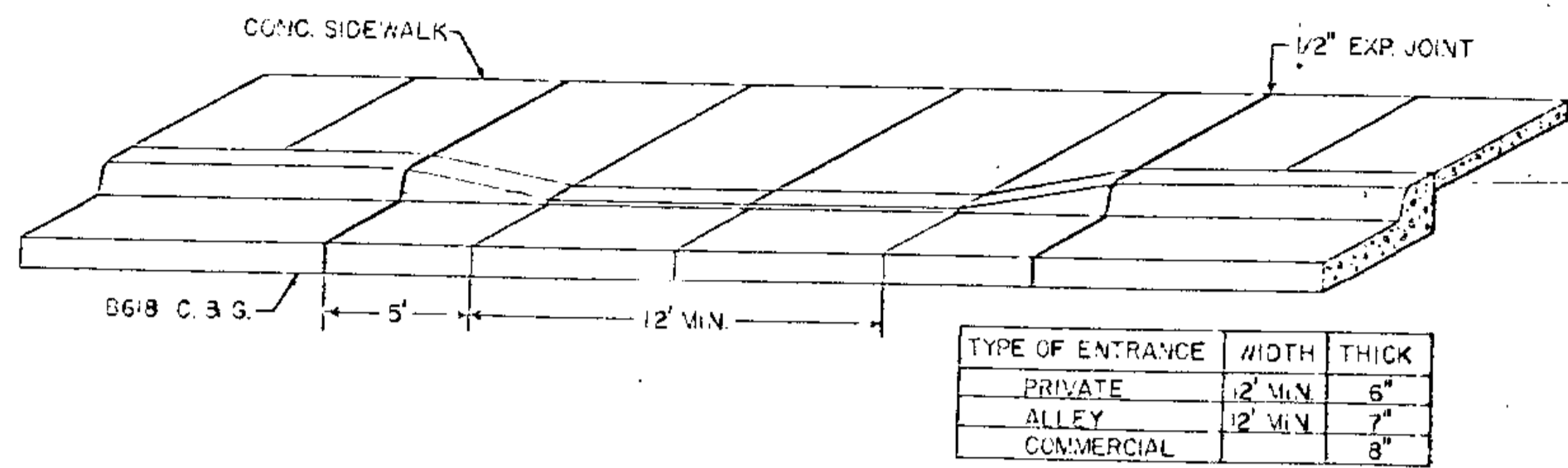


SCHOOL ENTRANCE

LT. STA. 81+6.88

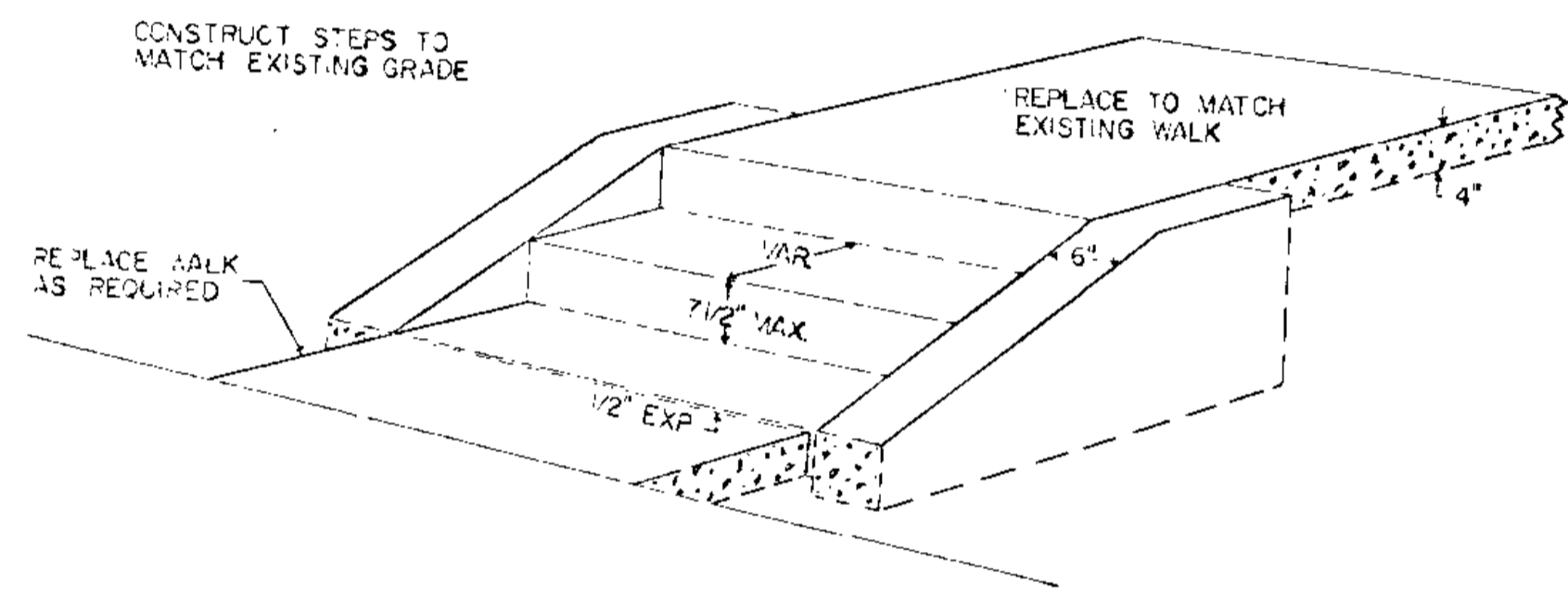


CONC. WALK & CURB AT ENTRANCES



CONCRETE STEP DETAIL

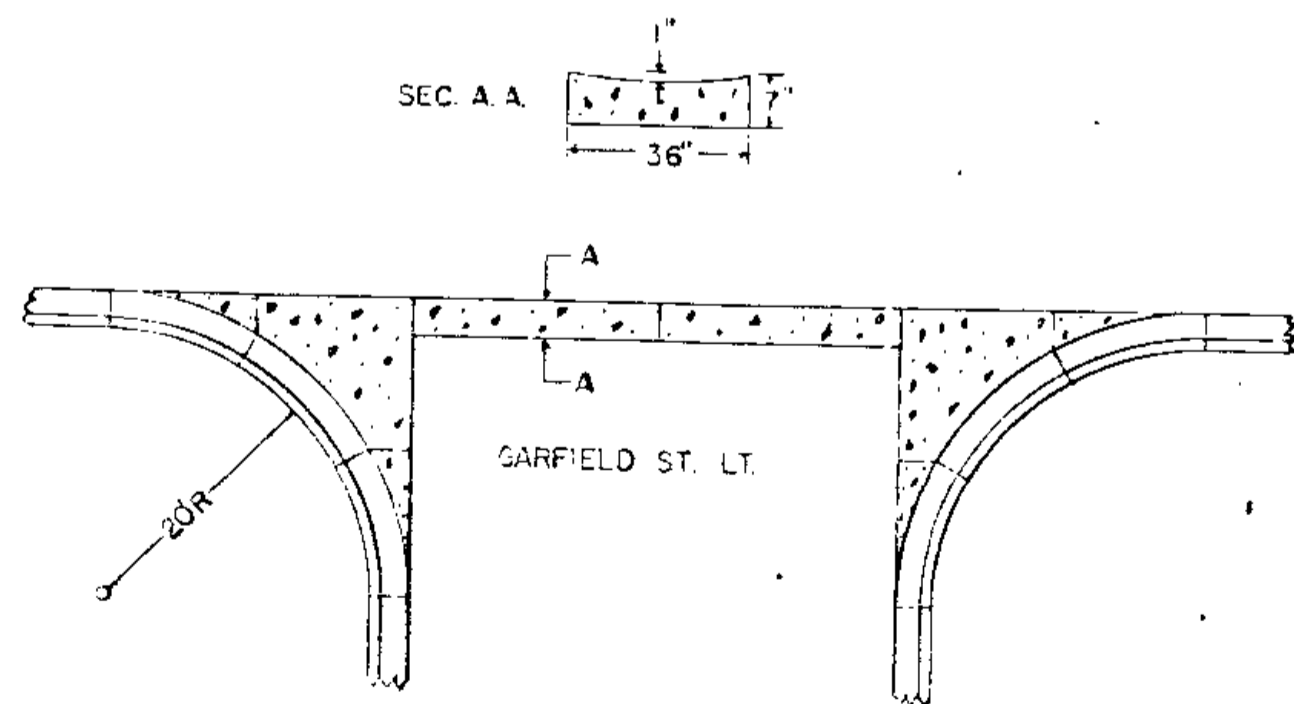
SCALE = NONE



REMOVE CONC. STEPS RT. 32-03

CONSTRUCT CONCRETE STEPS AT LOCATIONS WHERE SIDEWALK CONSTRUCTION REQUIRED THE REMOVAL OF ORIGINAL STEPS THE BASIC DESIGN AS SHOWN WILL BE BUILT TO CONFORM WITH THE EXISTING CONDITIONS AT EACH LOCATION.

CONC. CROSS GUTTER DETAIL



ITEM NO 2531507 7" CONC. DRIVEWAY PAVEMENT

STATIONING	LOCATION	SQ. YD
32+38 - 32+48	15'-OUT, RT.	39
34+98 - 35+21	37'-OUT, LT.	20
35+00 - 35+15	28'-OUT, RT.	20
35+87 - 36+09	28'-OUT, RT.	44
37+08 - 37+22	29'-OUT, RT.	37
40+97 - 41+16	37'-OUT, LT.	8
41+33 - 41+44	32'-OUT, RT.	7
45+02 - 45+18	29'-OUT, LT.	20
51+57 - 51+75	33'-OUT, RT.	14
52+31 - 52+91	33'-OUT, RT.	8
62+85 - 62+96	33'-OUT, RT.	21
TOTAL =		248

ADJUST FRAME & RING CASTINGS			
STATION	LOCATION	M.H. NO. C.B.	REMARKS
26+51	6' RT.	SAN. M.H.	ADJUST
29+52	6' RT.	SAN. M.H.	ADJUST
30+40	1' LT.	SAN. M.H.	ADJUST
32+45	1' LT.	SAN. M.H.	ADJUST
33+90	23' LT.	BELL TEL. M.H.	TO BE ADJUSTED BY OTHERS
33+92	18' RT.	BELL TEL. M.H.	TO BE ADJUSTED BY OTHERS
33+98	2' LT.	SAN. M.H.	ADJUST
36+70	6' RT.	SAN. M.H.	ADJUST
39+41	1' LT.	SAN. M.H.	ADJUST
42+37	2' LT.	SAN. M.H.	ADJUST
45+70	2' LT.	SAN. M.H.	ADJUST
46+18	6' RT.	SAN. M.H.	ADJUST
47+89	6' RT.	SAN. M.H.	ADJUST
48+25	19' RT.	BELL TEL. M.H.	TO BE ADJUSTED BY OTHERS
49+94	15' RT.	SAN. M.H.	ADJUST
52+95	15' RT.	SAN. M.H.	ADJUST
56+56	18' RT.	BELL TEL. M.H.	TO BE ADJUSTED BY OTHERS
56+93	16' RT.	SAN. M.H.	ADJUST
59+24	15' RT.	SAN. M.H.	ADJUST
62+11	15' RT.	SAN. M.H.	ADJUST
64+31	19' RT.	BELL TEL. M.H.	TO BE ADJUSTED BY OTHERS
65+04	15' RT.	SAN. M.H.	ADJUST
65+64	18' RT.	BELL TEL. M.H.	TO BE ADJUSTED BY OTHERS
73+80	21' RT.	BELL TEL. M.H.	TO BE ADJUSTED BY OTHERS
74+14	16' RT.	STORM SEWER M.H.	ADJUST
80+81	3' RT.	SAN. M.H.	ADJUST
80+75	30' RT.	SAN. M.H.	ADJUST
81+18	4' RT.	SAN. M.H.	ADJUST
81+59	23' RT.	BELL TEL. M.H.	TO BE ADJUSTED BY OTHERS
85+21	36' RT.	STORM SEWER M.H.	SALVAGE CASTING, F. & I. 4" M.H. CASTING, NEEHAH R-1773-A OR EQUAL
85+30	3' RT.	SAN. M.H.	ADJUST
86+10	3' RT.	SAN. M.H.	SALVAGE CASTING, ADJUST, F. & I. 4" M.H. CASTING, NEEHAH R-1773-A OR EQUAL
89+56	4' RT.	SAN. M.H.	ADJUST
89+67	22' RT.	BELL TEL. M.H.	TO BE ADJUSTED BY OTHERS
93+90	3' RT.	SAN. M.H.	ADJUST
97+64	21' RT.	BELL TEL. M.H.	TO BE ADJUSTED BY OTHERS
98+04	6' RT.	SAN. M.H.	ADJUST
101+70	1' RT.	SAN. M.H.	ADJUST
105+60	18' RT.	BELL TEL. M.H.	TO BE ADJUSTED BY OTHERS
TOTALS	ADJ. FRAME & RING CASTINGS 28	CASTINGS ASSEMBLIES 2	

CURB AND GUTTER REMOVAL		
STATION	LOCATION	LIN. FT.
26+69	28' RT.	27
30+25	35' RT.	36
30+59	38' RT.	34
33+82	31' LT.	34
34+13	33' LT.	34
36+14 to 36+32	15' RT.	18
36+13 to 36+33	21' LT.	20
39+16	29' LT.	22
39+44	38' RT.	15
39+61	29' LT.	22
39+84	33' RT.	20
42+41	31' LT.	22
42+69	32' LT.	22
47+69	36' RT.	15
48+09	36' RT.	15
56+78	34' RT.	22
57+08	36' RT.	15
64+85	34' RT.	22
65+25	33' RT.	22
68+85	35' RT.	15
69+25	35' RT.	15
74+09	40' RT.	12
74+39	41' RT.	12
80+94	37' RT.	12
81+40	37' RT.	12
85+10	41' RT.	2
85+50	41' RT.	2
97+84	35' RT.	15
98+24	34' RT.	15
101+49	41' RT.	12
TOTAL		561 LIN. FT.

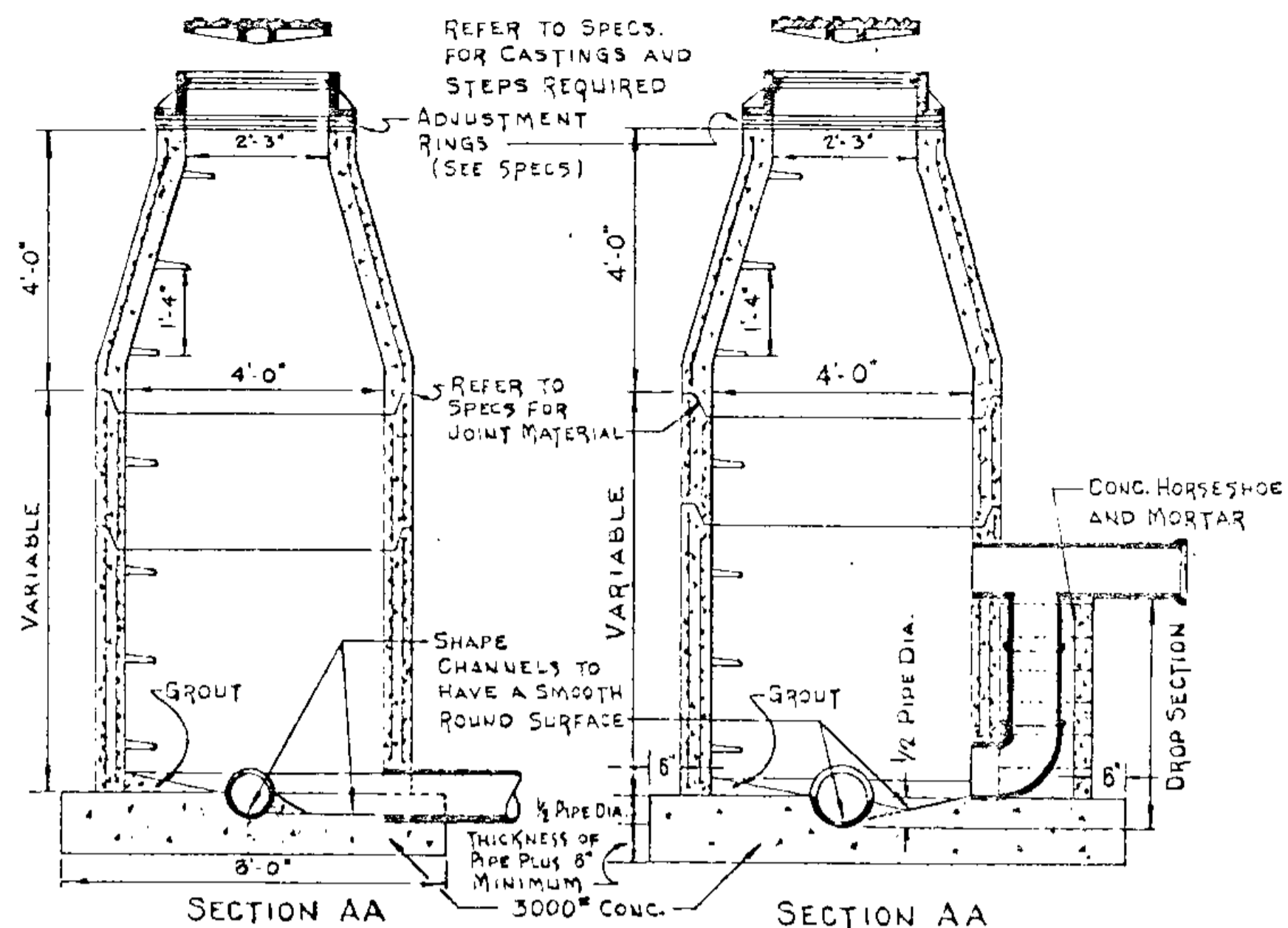
SALVAGE AND INSTALL FENCE			
STATION	LOCATION	SALVAGE	INSTALL
35+54 to 35+67	30' RT.	13'	13'
35+67	30' RT.	10'	7'
37+25	30' LT.	5'	2'
38+09	31' LT.	4'	2'
38+04	34' RT.	5'	5'
48+21	35' LT.	7'	7'
48+21 to 55+00	35' LT.	679'	679'
55+00 to 57+00	34' LT.	200'	200'
57+00 to 60+00	33' LT.	300'	300'
60+00 to 65+00	32' LT.	500'	500'
65+00 to 69+31	32' LT.	431'	431'
69+31	32' LT.	10'	10'
71+62 to 74+17	25' LT.	255'	255'
74+17	28' LT.	26'	21'
75+00 to 77+00	36' LT.	200'	200'
77+00 to 80+00	38' LT.	300'	300'
80+00 to 84+00	40' LT.	300'	300'
SCHOOL ENTRANCE	---	120'	---
TOTAL		3365'	TOTAL 3233'

ADJUST WATER GATE HOUSINGS	
STATION	LOCATION
25+38	12' LT.
30+29	20' LT.
30+31	17' LT.
33+69	19' LT.
33+91	19' LT.
39+25	38' LT.
39+31	15' LT.
39+46	12' LT.
42+75	16' LT.
42+79	21' LT.
47+59	24' LT.
47+68	15' LT.
47+78	26' LT.
47+99	23' RT.
48+06	35' RT.
56+70	27' RT.
56+75	34' RT.
56+81	27' RT.
61+76	29' RT.
65+35	24' RT.
68+95	33' RT.
68+84	35' RT.
74+00	32' RT.
74+36	33' RT.
80+84	8' RT.
85+06	10' RT.
85+40	32' RT.
85+51	37' LT.
85+53	11' RT.
93+75	24' RT.
97+75	9' RT.
98+37	25' RT.
101+78	34' RT.
TOTAL 33	

CLEAR & GRUB		
STATION	LOCATION	QUANTITY
26+81	21' LT.	
27+16	20.5' LT.	
27+54	21' LT.	
27+85	21.2' LT.	
28+36	22.6' LT.	
28+60	22.3' LT.	
28+78	21.4' LT.	
28+93	21.3' RT.	
30+38	23' LT.	
30+74	23' LT.	
32+35	31.3' RT.	
33+35	32.2' RT.	
33+61	22.5' LT.	
34+45	22.8' LT.	
34+65	23.7' LT.	
34+81	23.5' LT.	
35+37	22.6' LT.	
35+99	22.9' LT.	
36+30	22.6' LT.	
37+18	25' LT.	
37+28	24' LT.	
38+61	24' LT.	
38+95	24' LT.	
46+70	31.8' RT.	
51+48	30.5' RT.	
51+79	30' RT.	
TO	TO	5
52+40	20' RT.	
74+42	39.6' LT.	
74+64	35.3' LT.	
74+70	35.5' LT.	
74+77	34.3' LT.	
76+50	32.8' LT.	
95+52	31' RT.	
95+57	30.2' RT.	
TOTAL =		47

SIDEWALK REMOVAL		
STATIONING	LOCATION	SQ. FT.
26+70 - 33+98	25'-29' RT.	2696
25+04 - 33+83	29'-35' LT.	5274
26+75 - 26+79	29'-OUT, RT.	8
26+09 - 26+14	34'-OUT, LT.	10
27+30 - 27+33	29'-OUT, RT.	18
27+34 - 27+37	34'-OUT, LT.	6
27+67 - 27+69	29'-OUT, RT.	12
27+76 - 27+80	29'-OUT, RT.	16
28+07 - 28+09	29'-OUT, RT.	12
28+31 - 28+33	29'-OUT, RT.	12
28+78 - 28+81	34'-OUT, LT.	9
28+84 - 28+88	29'-OUT, RT.	32
29+77 - 29+79	34'-OUT, LT.	4
31+00 - 31+03	28'-OUT, RT.	36
32+06 - 32+10	35'-OUT, LT.	16
33+20 - 33+22	28'-OUT, RT.	20
33+70 - 33+74	23'-OUT, LT.	64
34+14 - 34+22	30'-36' LT.	48
34+22 - 34+26	23'-OUT, LT.	64
38+83 - 38+86.5	25'-OUT, RT.	42
51+09 - 51+11	31'-OUT, RT.	12
73+26 - 74+01	34'-OUT, RT.	25
TOTAL SQ. FT. =		8436

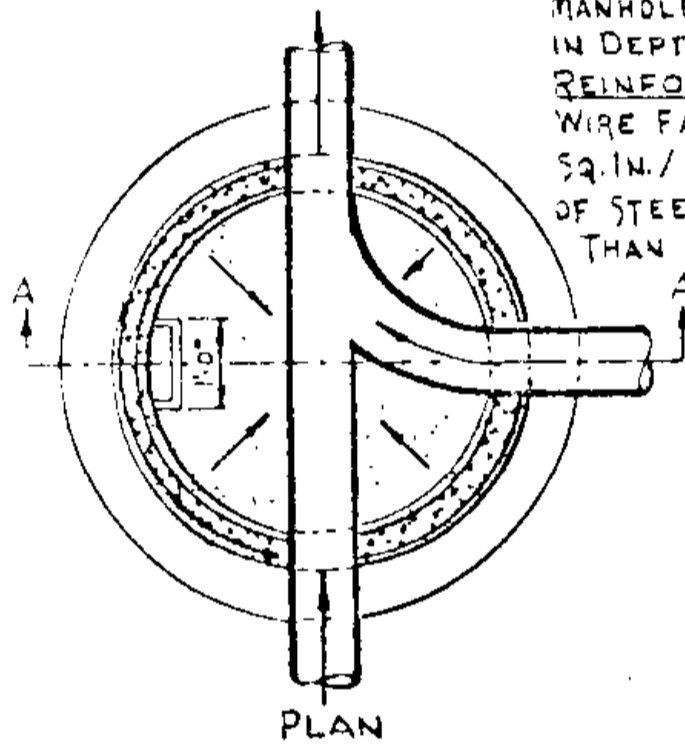




SECTION AA

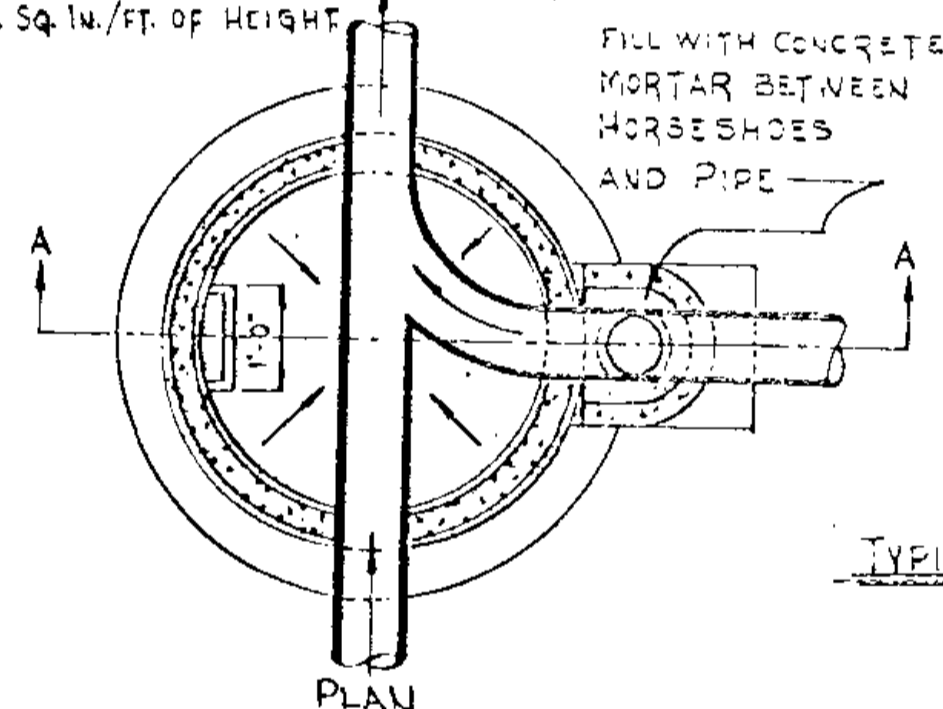
SECTION AA

MANHOLE BASES FOR MANHOLES 12" AND GREATER IN DEPTH SHALL BE REINFORCED WITH #6 BARS 9" O.C.E.W. REINFORCING: CONE SECTION: SINGLE LINE STEEL WIRE FABRIC HAVING AN AREA OF NOT LESS THAN 0.17 SQ. IN./FT. OF HEIGHT. 48" SECTIONS: TWO LINES OF STEEL FABRIC EACH HAVING AN AREA OF NOT LESS THAN 0.12 SQ. IN./FT. OF HEIGHT.



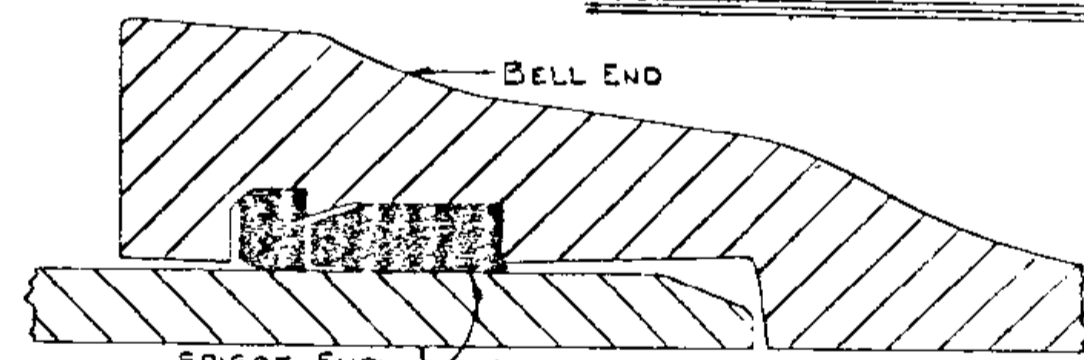
PLAN

STANDARD MANHOLE

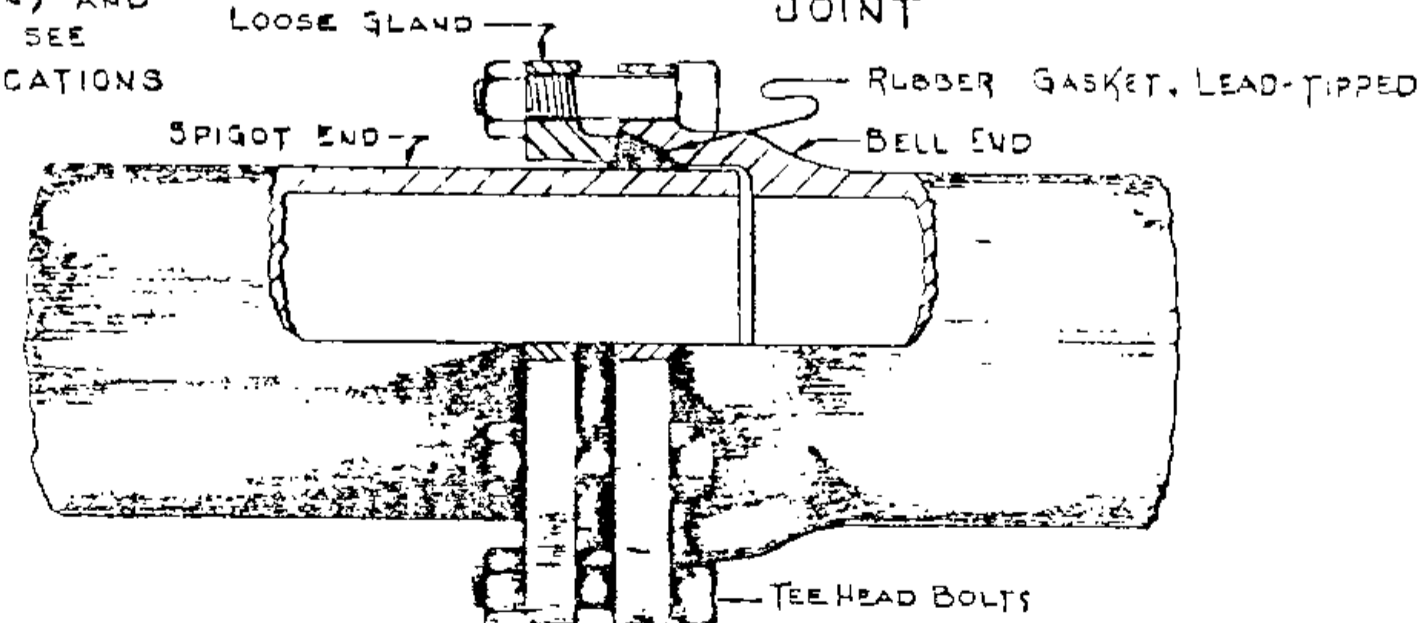


PLAN

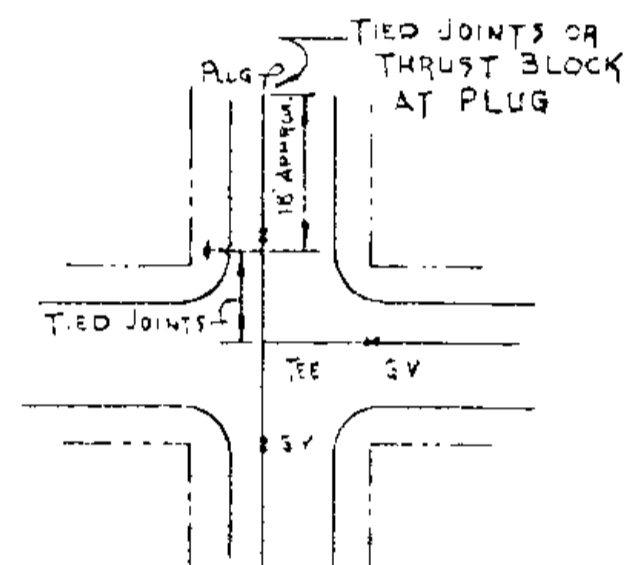
STANDARD DROP MANHOLE



NOTE: FOR CONDUCTIVITY PROVISIONS AND TESTING SEE SPECIFICATIONS



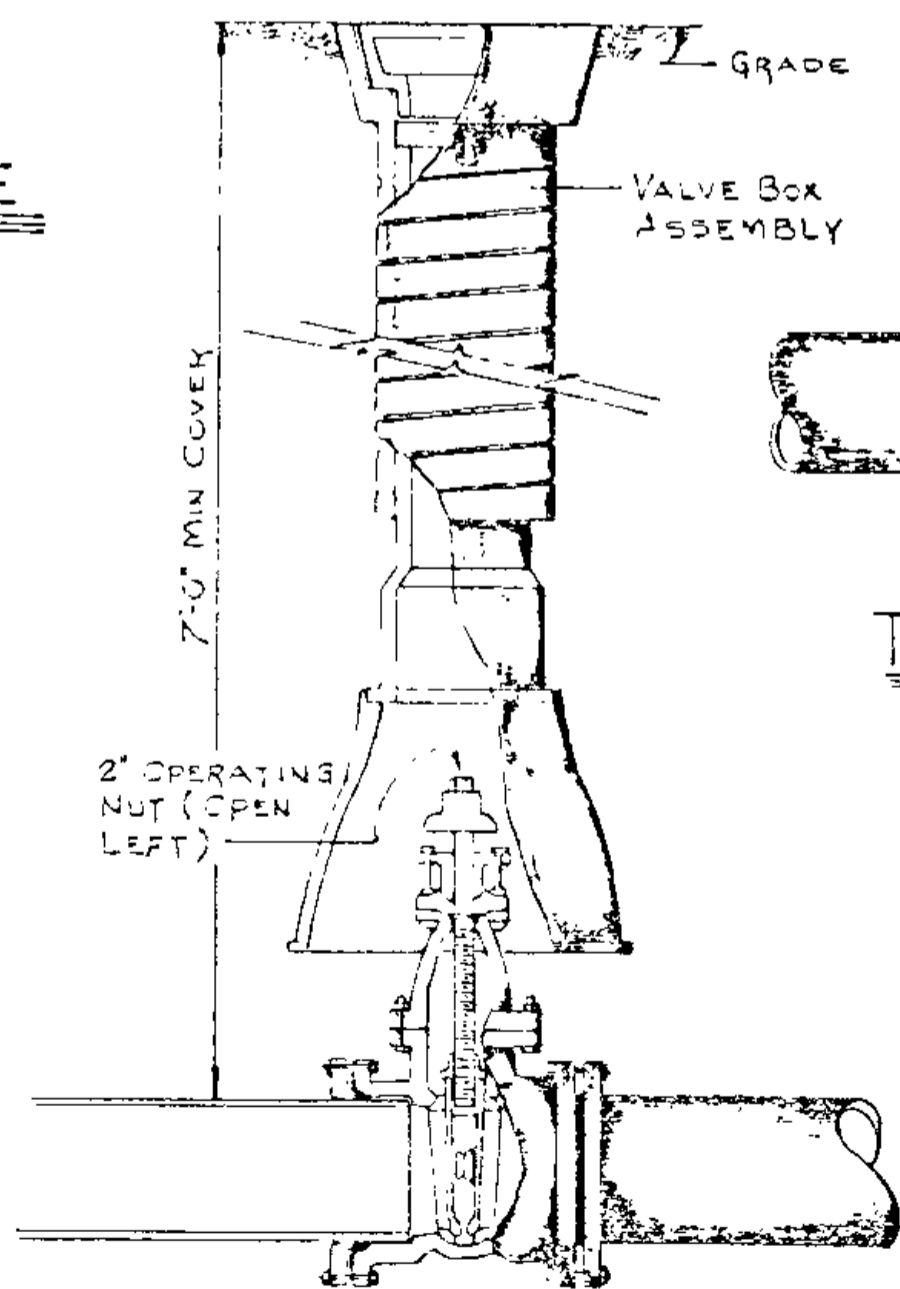
CAST IRON PIPE - MECHANICAL JOINT



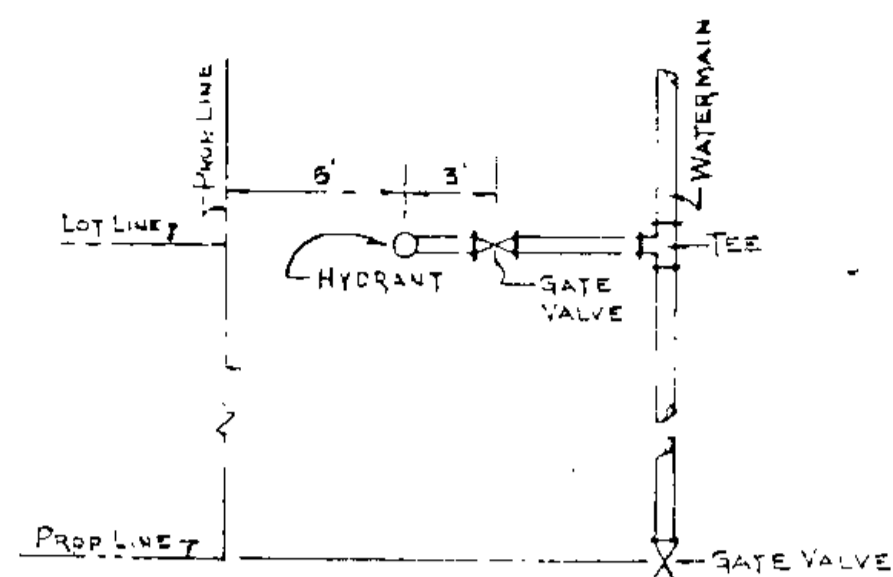
TYPICAL "DEAD END" PIPE DETAILS

PIPE DIAMETER	6"	8"	10"
SLT SCREWS PER GLEND	5	8	18

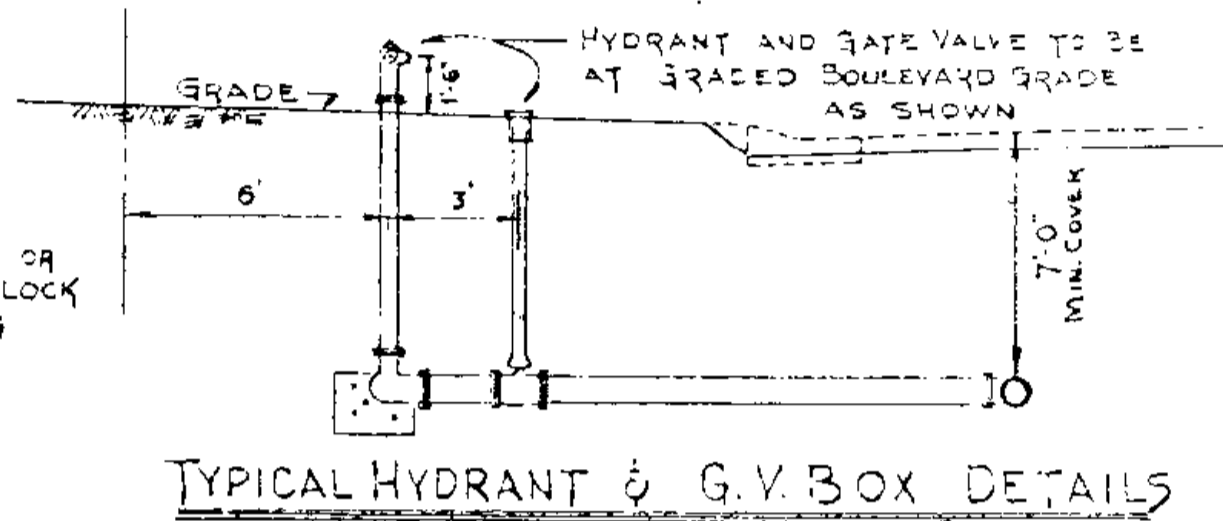
6", 8" AND 10" STUB-OUT DEAD END LINES SHALL BE MECHANICAL JOINT CAST IRON PIPE WITH DUCTILE IRON RETAINER GLANDS. STUB OUT LINES SHALL BE MEASURED AND PAID FOR AS THE PRICE BID FOR C.I.P. WATERMAIN AND SHALL INCLUDE THE COST OF THE RETAINER GLANDS. SET SCREWS SHALL BE TIGHTENED WITH A TORQUE WRENCH TO 30 FOOT LBS.



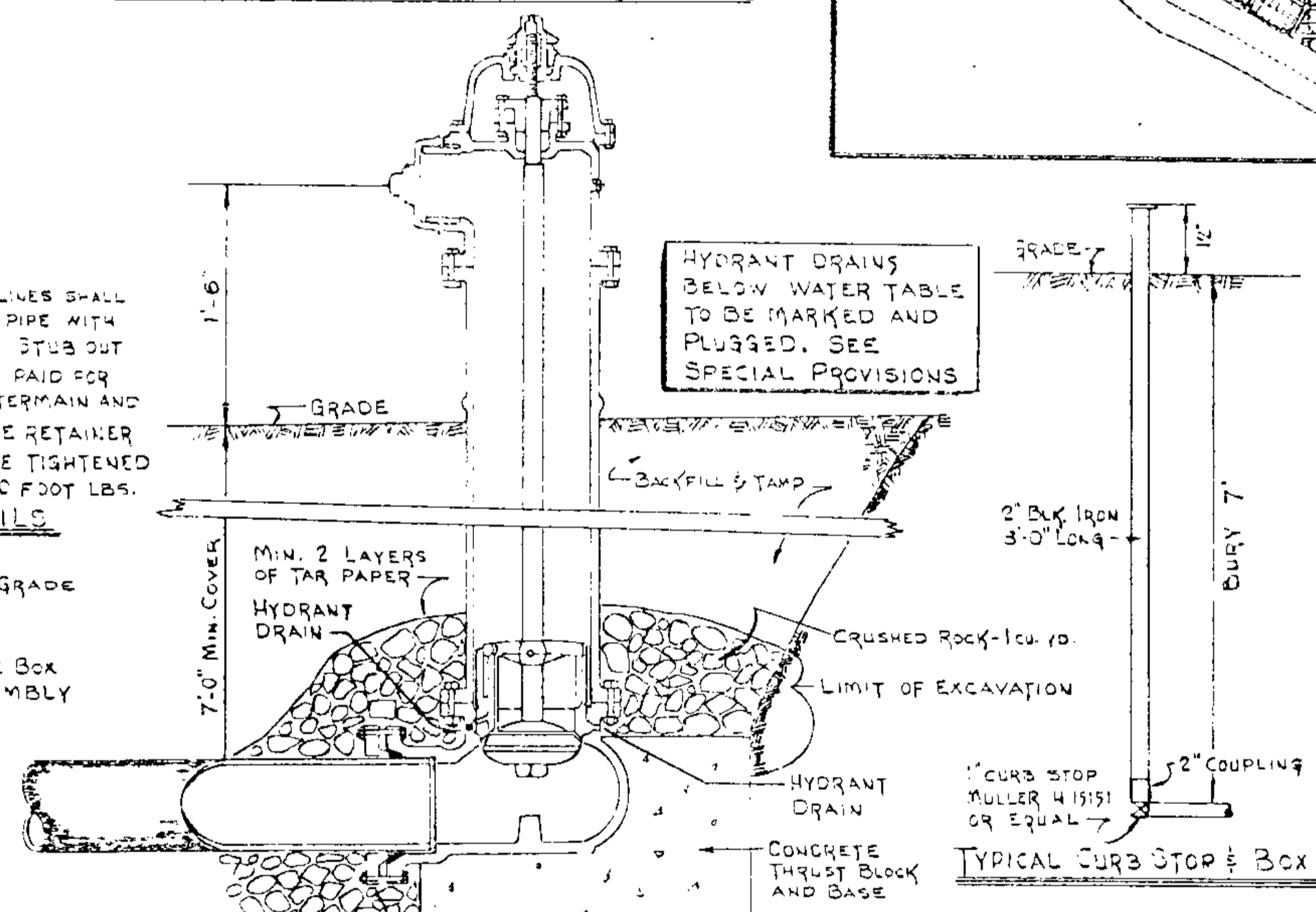
TYPICAL GATE VALVE & BOX INSTALLATION



TYPICAL HYDRANT AND GATE VALVE PLACING

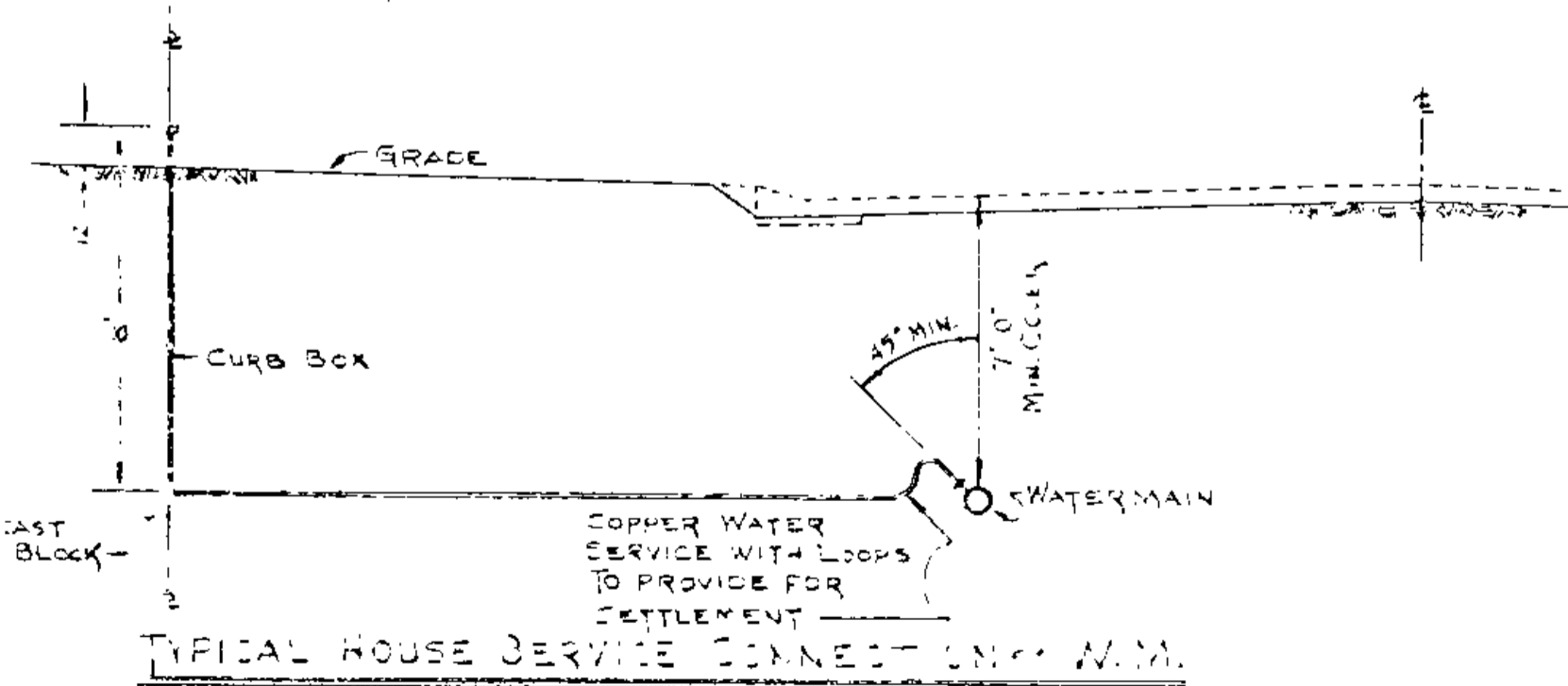


TYPICAL HYDRANT & G.V. BOX DETAILS

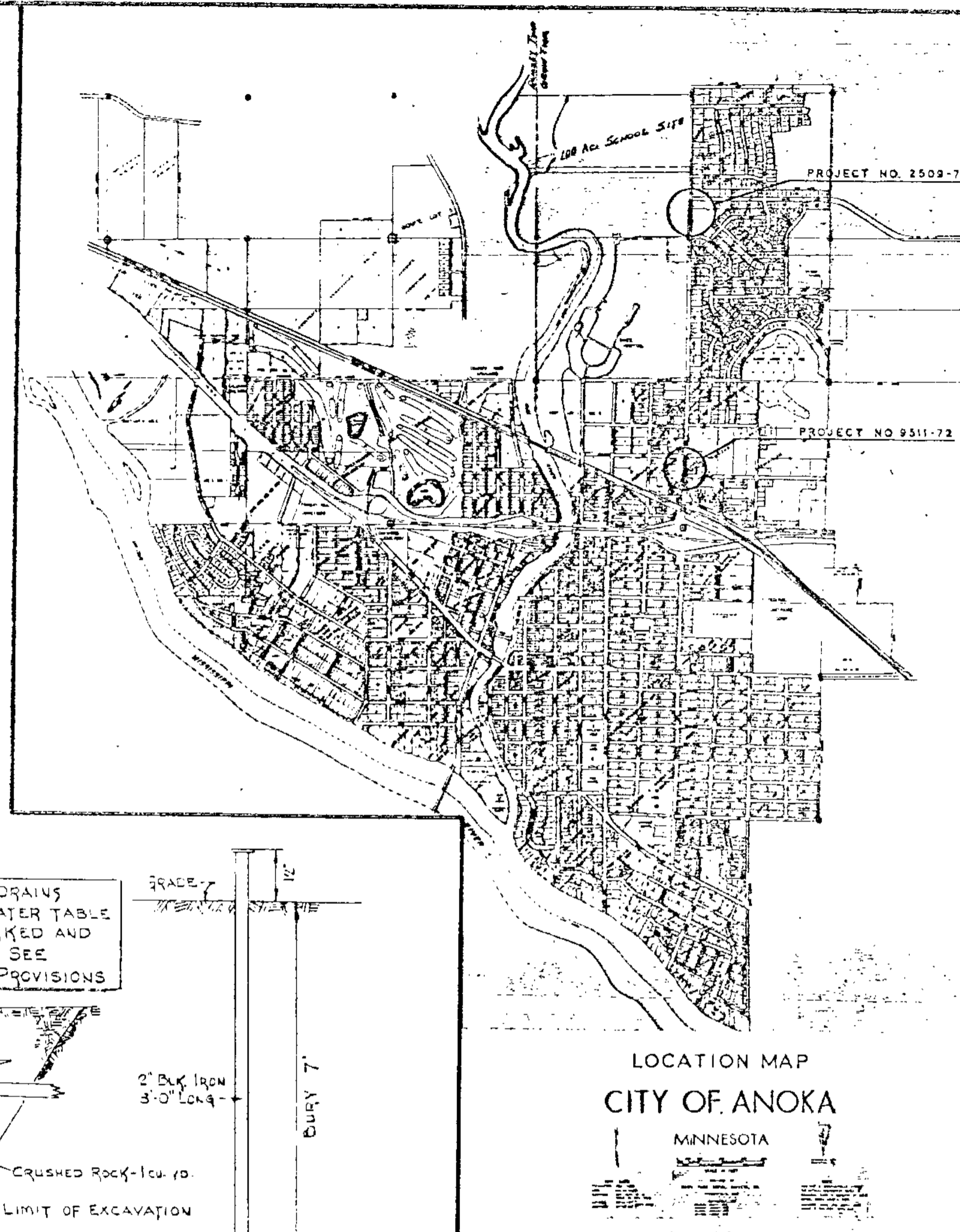


TYPICAL FIRE HYDRANT INSTALLATION

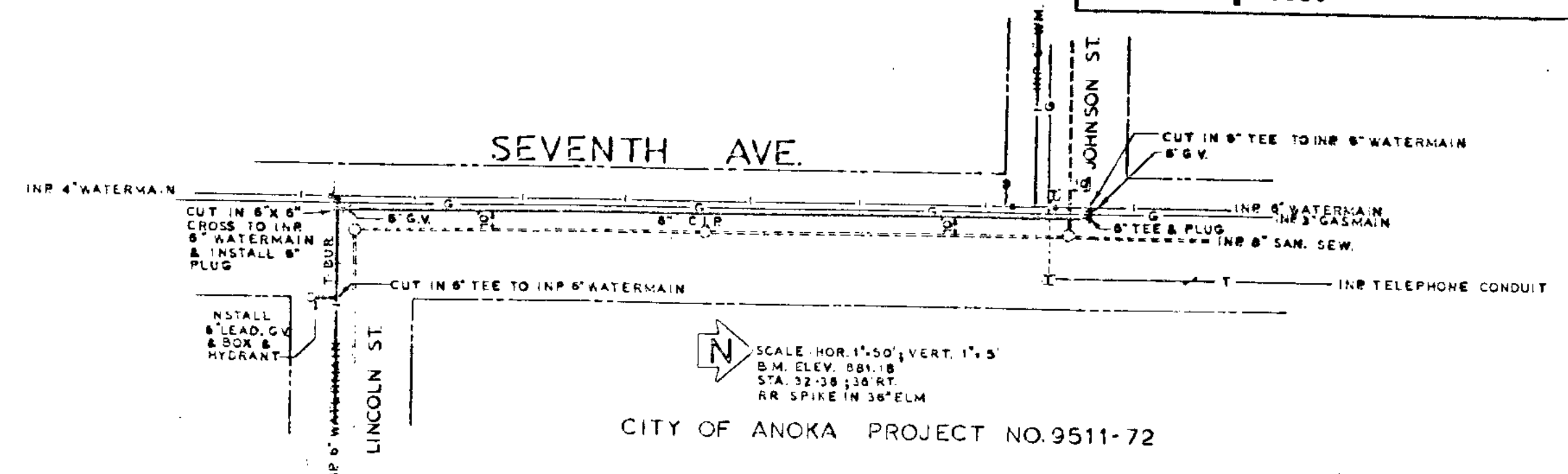
TYPICAL CURB STOP & BOX



TYPICAL HOUSE SERVICE CONNECTION ON W.M.

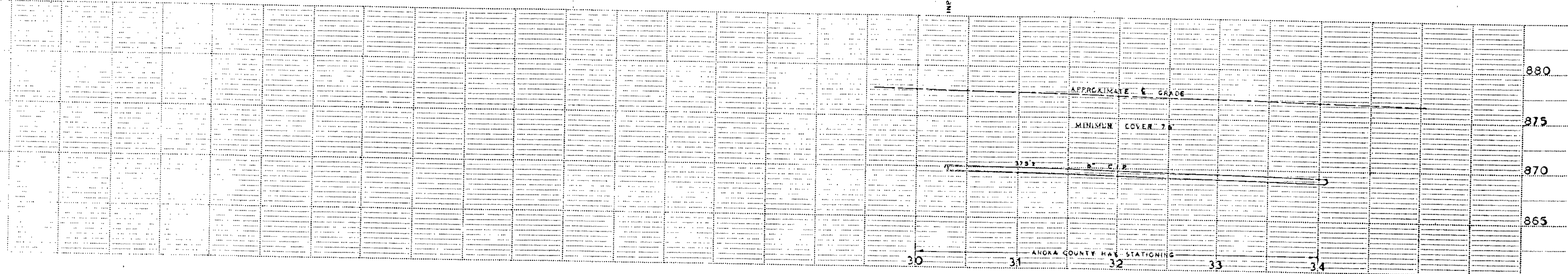


LOCATION MAP CITY OF ANOKA MINNESOTA



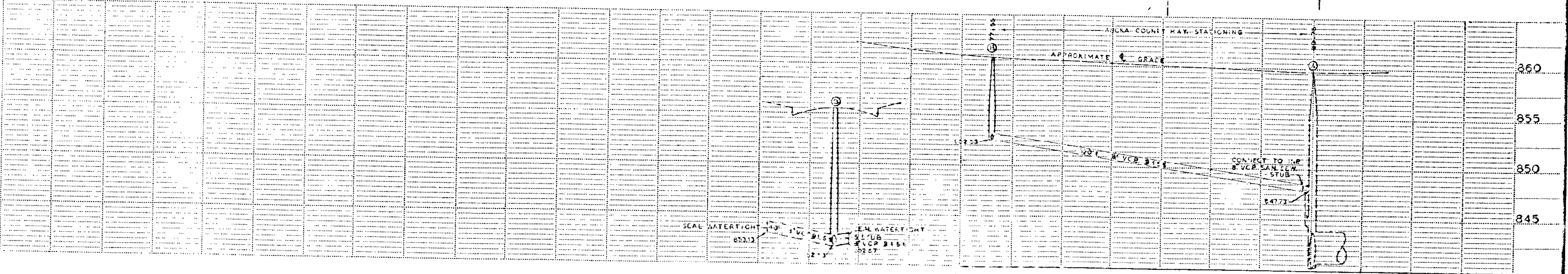
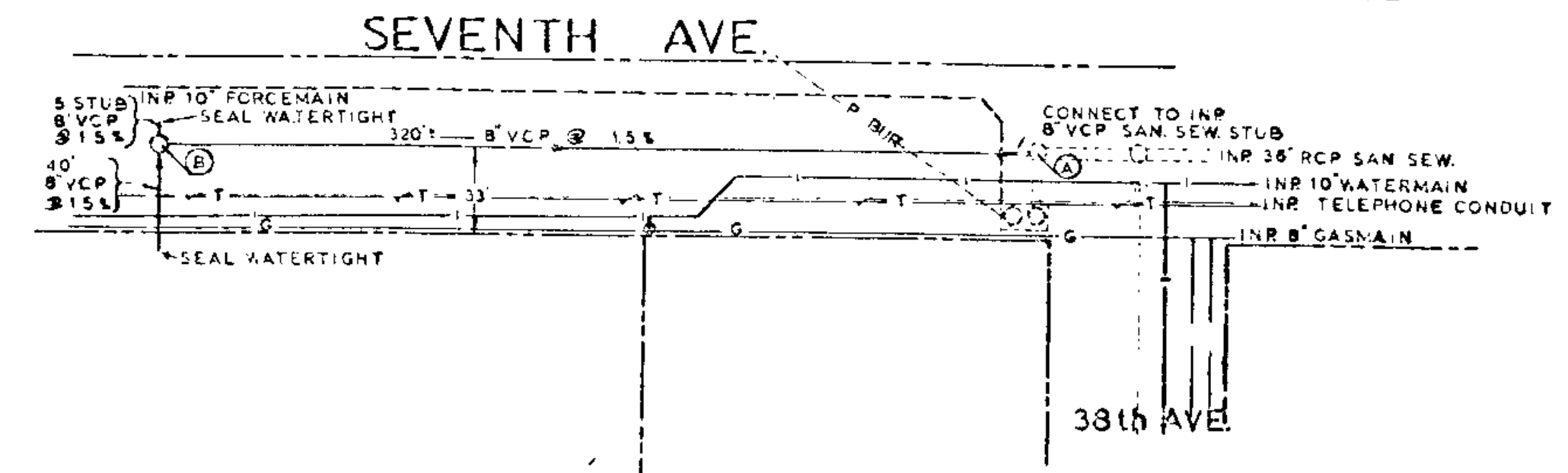
SCALE HOR. 1"=50' VERT. 1"=5'  
 B.M. ELEV. 881.18  
 STA. 32+38.13 RT.  
 RR SPIKE IN 30' ELM

CITY OF ANOKA PROJECT NO. 9511-72



SCALE HOR. 1"=50' VERT. 1"=5'  
 B.M. ELEV. 868.58  
 STA. 74+79.55 RT.  
 RR SPIKE IN 30' OAK

CITY OF ANOKA PROJECT NO. 2509-72



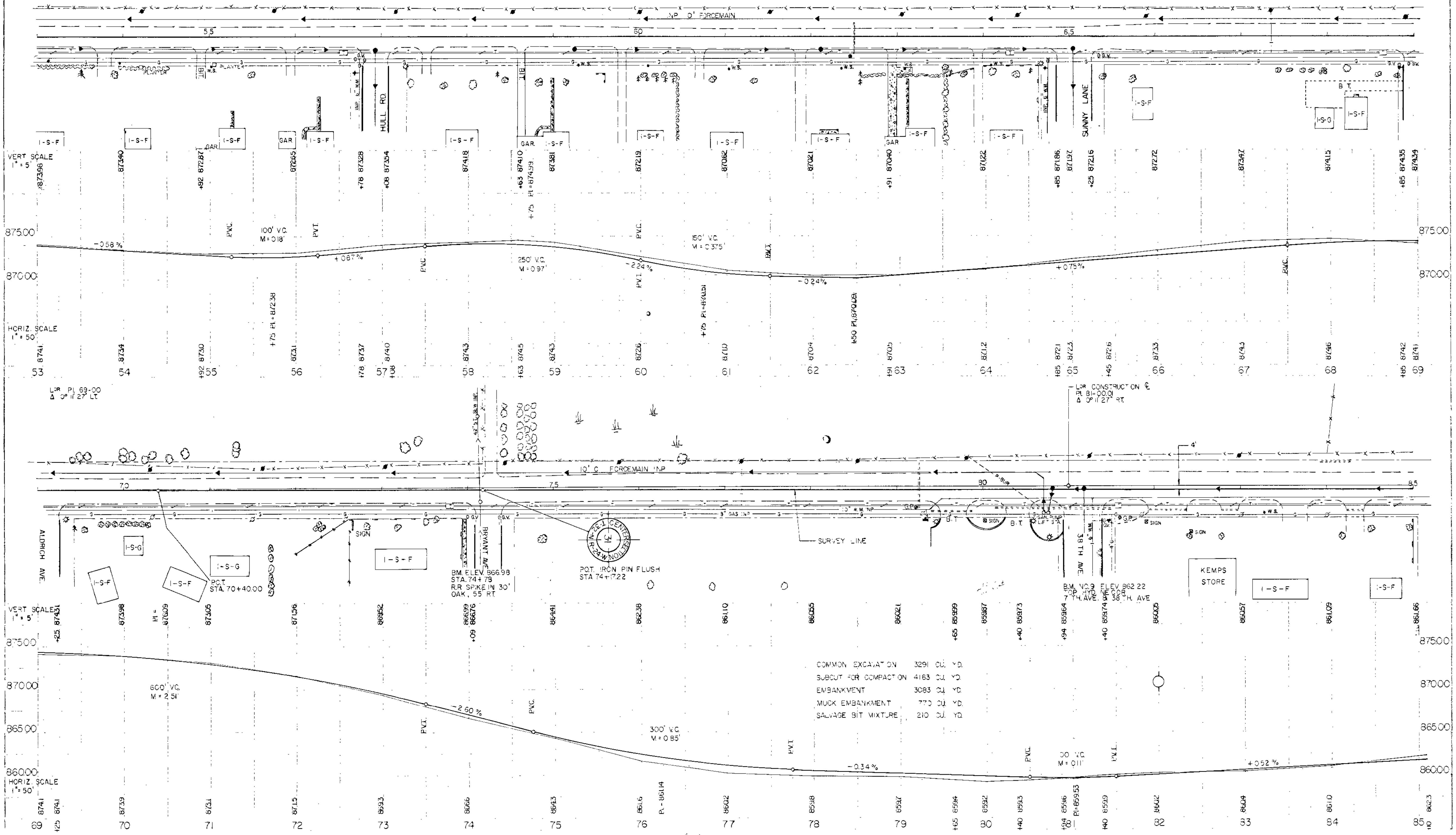
DOUBLE PLAN DOTTED  
 & 4 SHEETS TO BE SUBMITTED BY PLAN



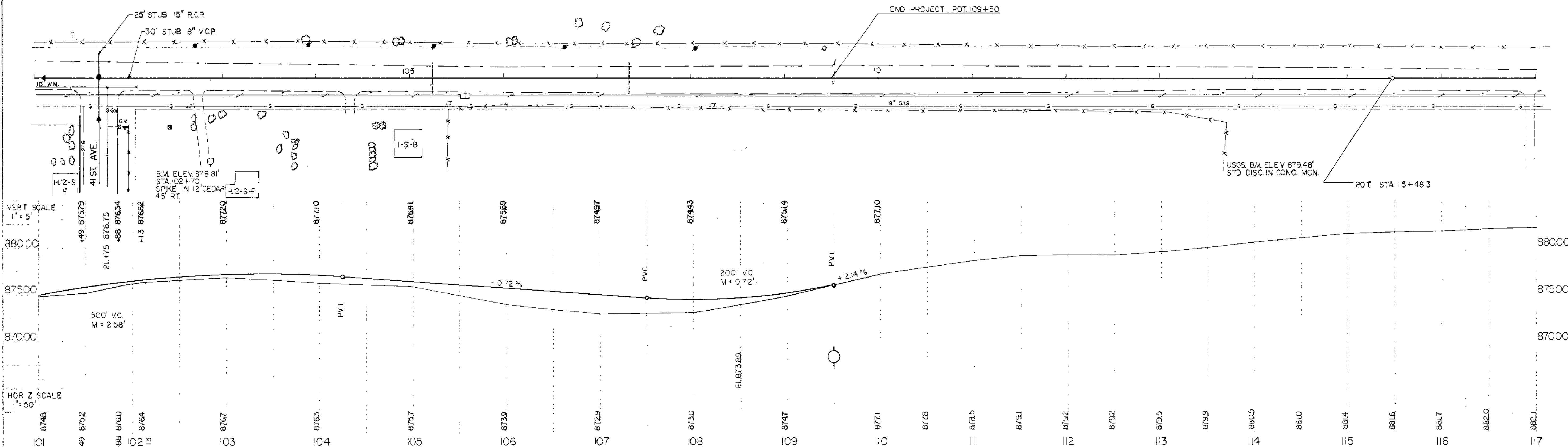
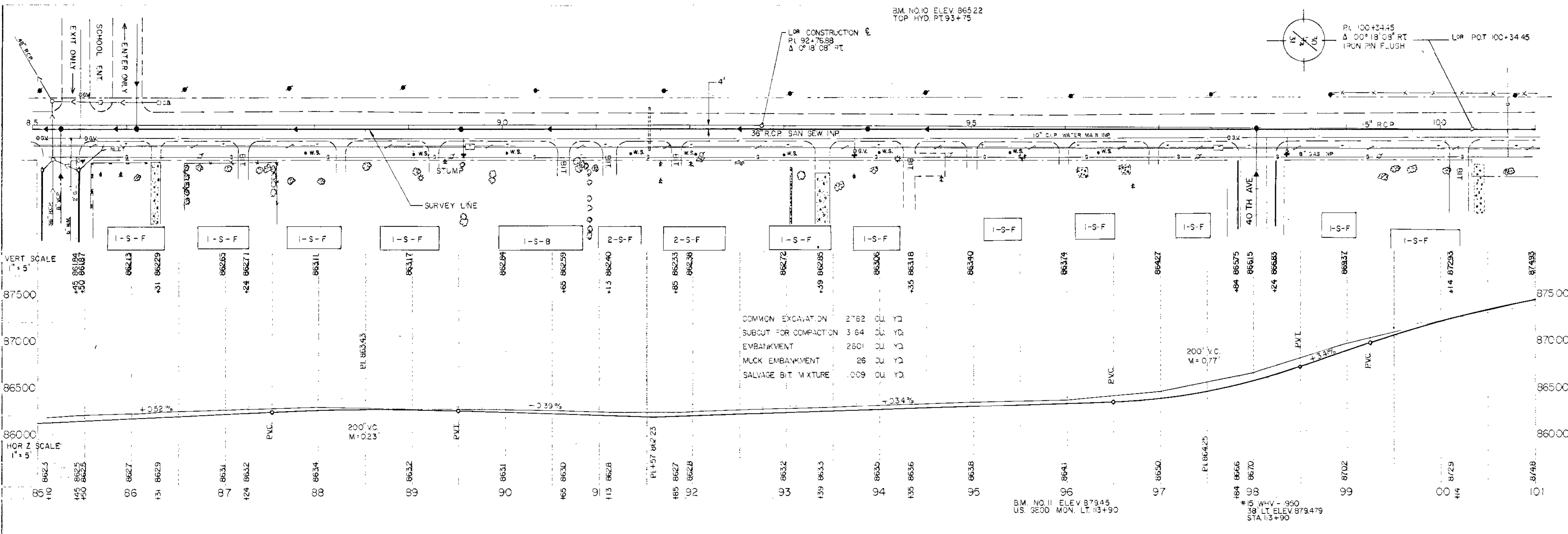
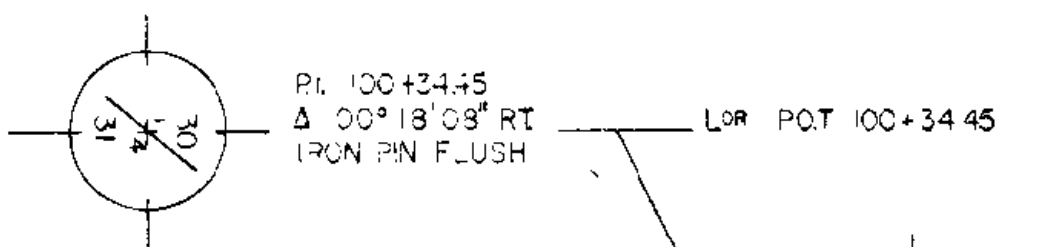
BM NO 5 ELEV 87723  
SW COR. BOTTOM STEP 3254

BM NO 6 ELEV 87605  
OP. HYD. SE. COR.  
7 TH. AVE. & HULL RD.

BM NO 7 ELEV 87658  
TOP HYD. SE. COR.  
7 TH. AVE. & ALDRICH AVE.

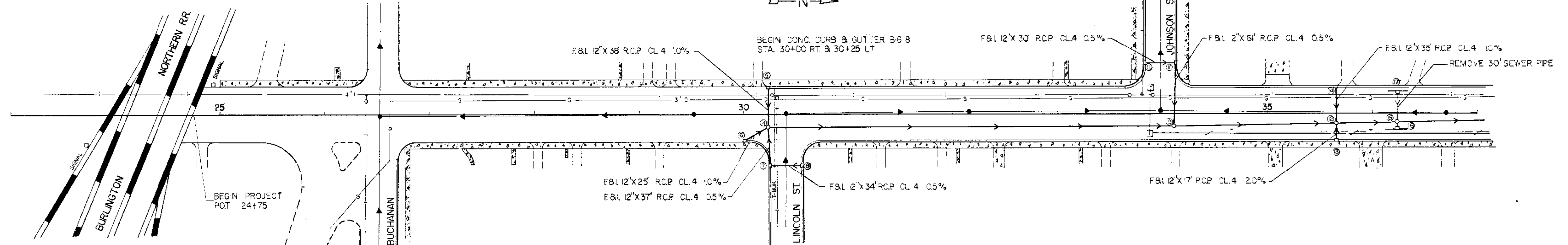
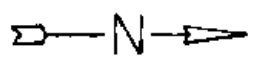


BM. NO. 10 ELEV. 865.22  
TOP HYD. PT. 93+75

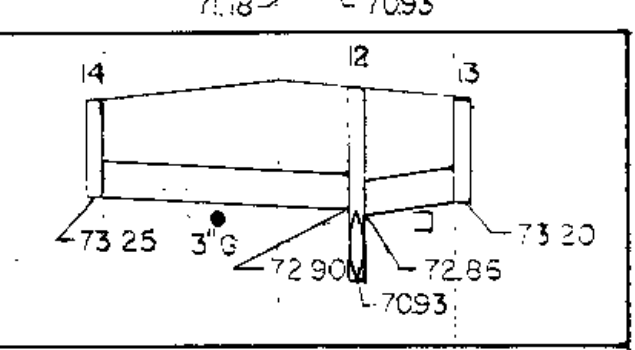
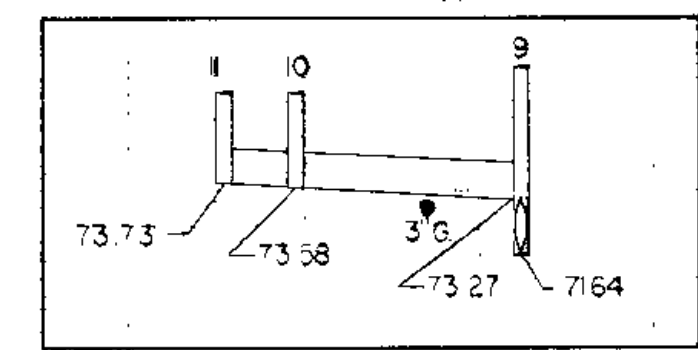
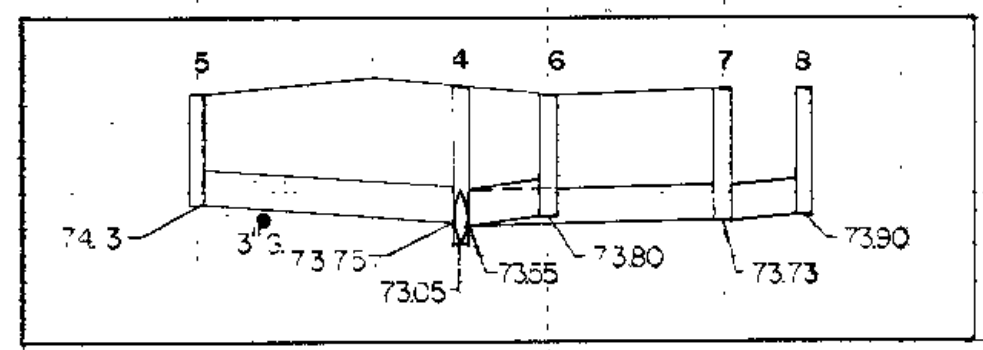
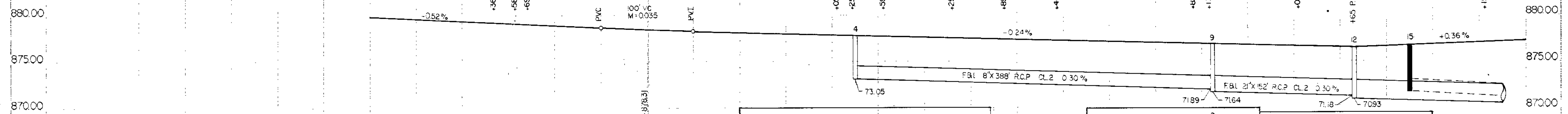




BM NO. 2 ELEV. 878.99  
TOP HYD. SW. COR.  
7TH AVE & JOHNSON ST

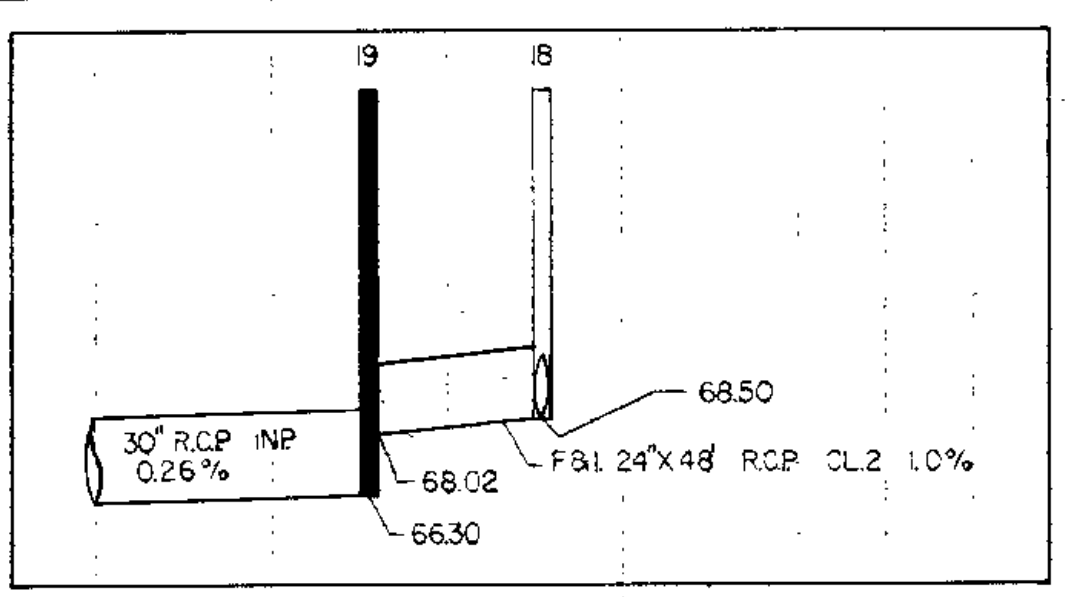
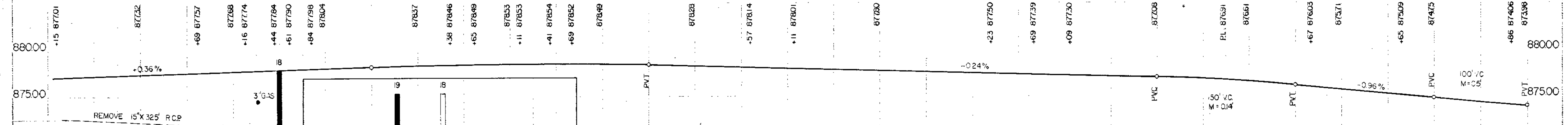
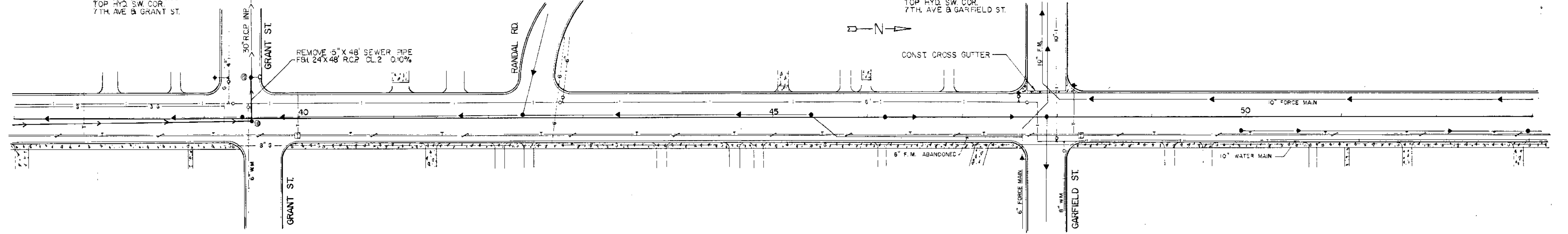
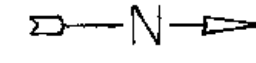


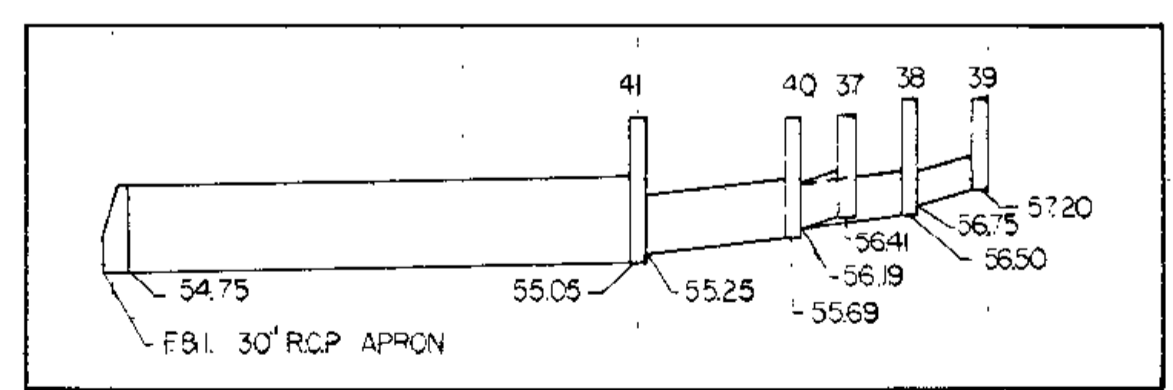
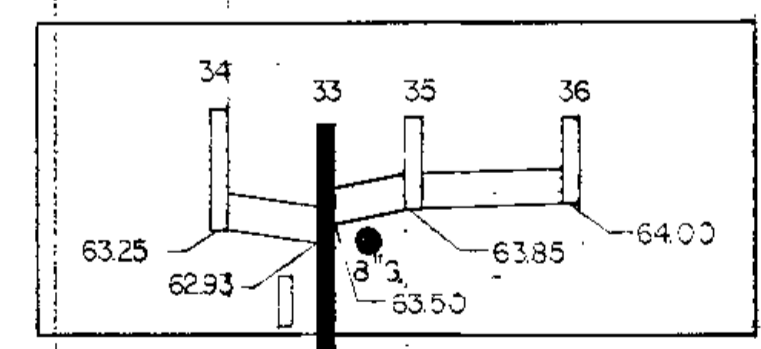
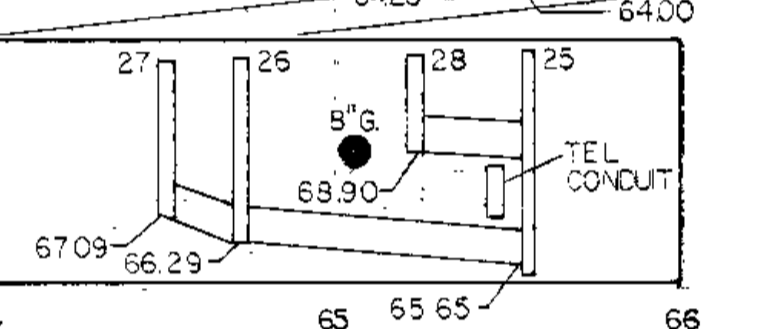
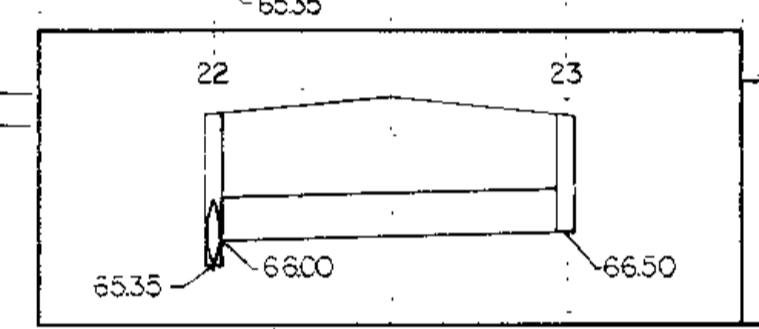
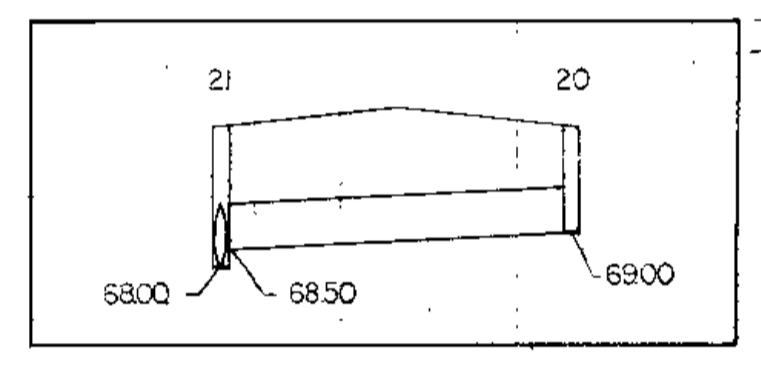
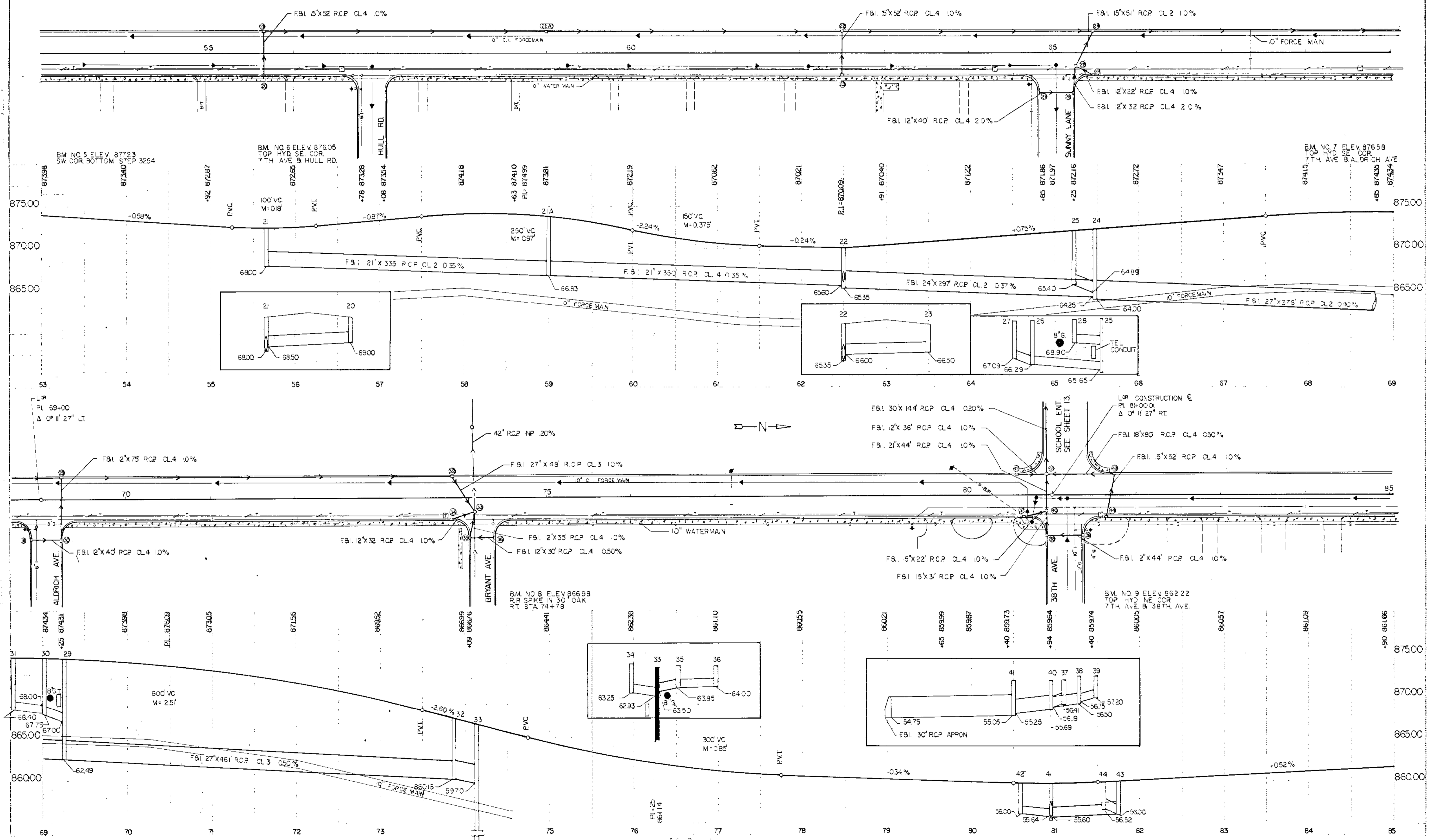
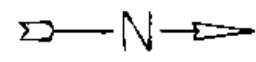
BM NO. 1 ELEV. 873.53  
US. GEO. MON. 46 RT  
7TH A 23-60

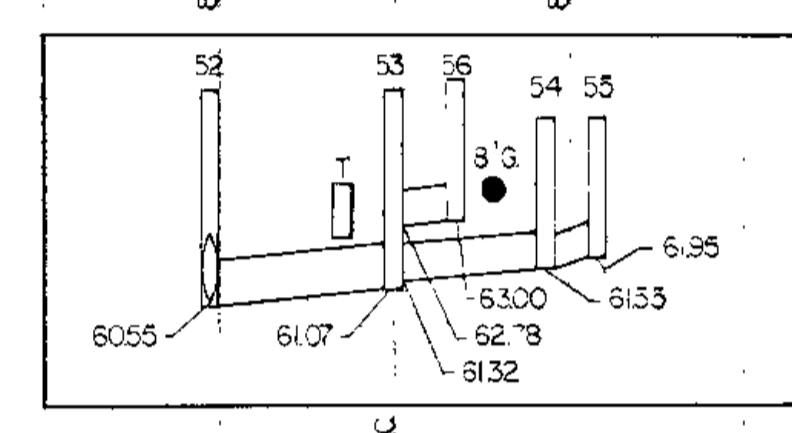
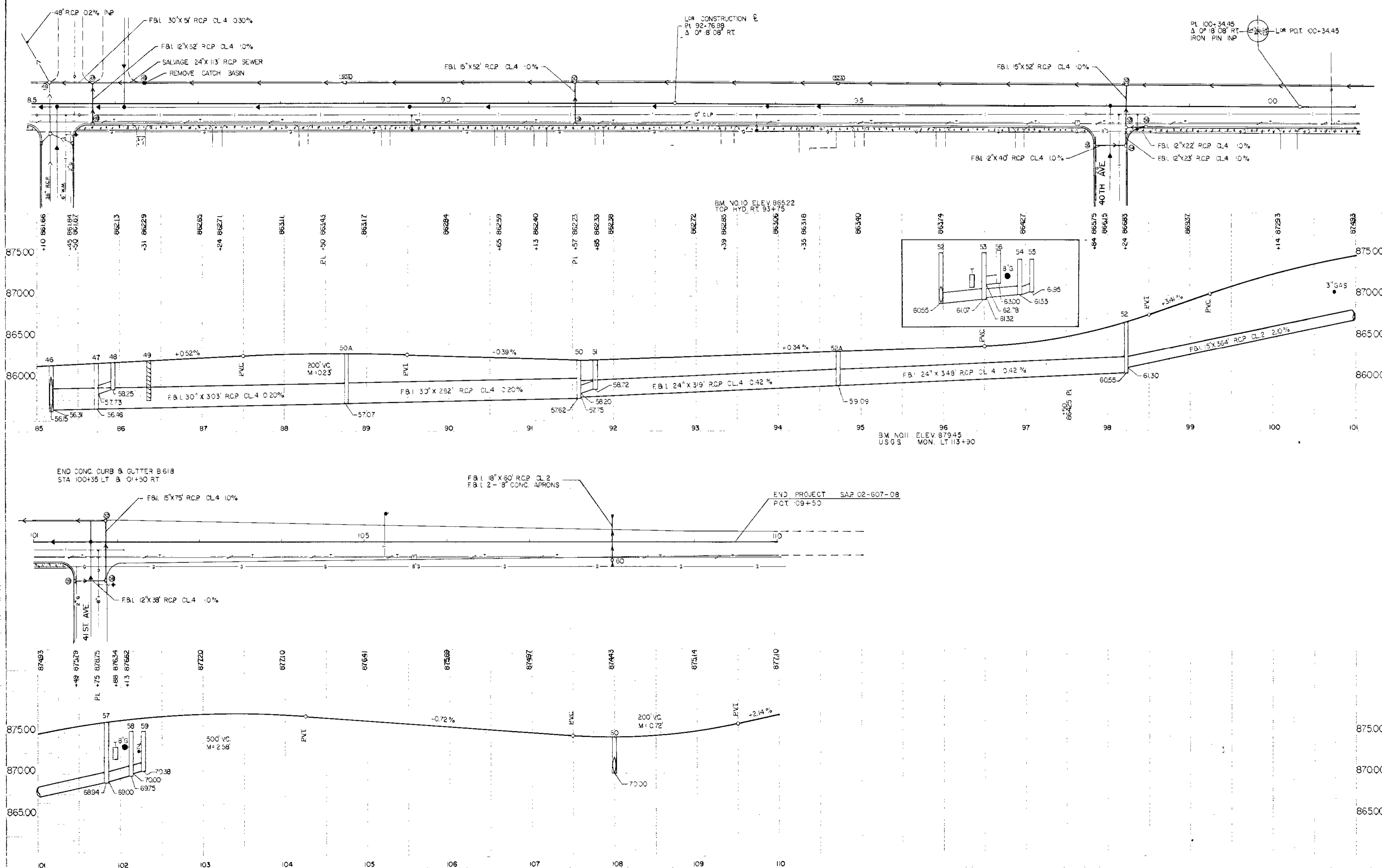


BM NO. 3 ELEV. 880.09  
TOP HYD. SW. COR.  
7TH AVE & GRANT ST.

BM NO. 4 ELEV. 879.47  
TOP HYD. SW. COR.  
7TH AVE & GARFIELD ST.

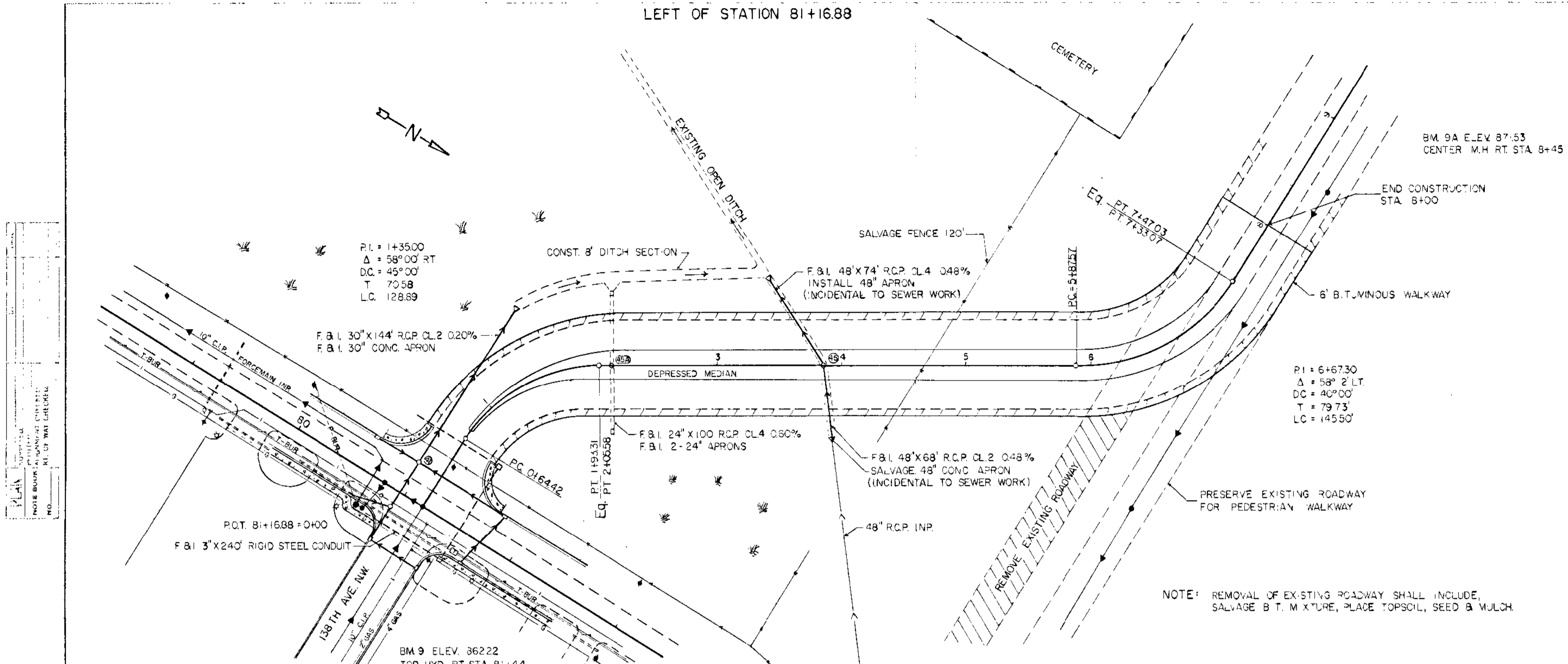






# SCHOOL ENTRANCE CONSTRUCTION

LEFT OF STATION 81+16.88



NOTE: REMOVAL OF EXISTING ROADWAY SHALL INCLUDE, SALVAGE B.T. MIXTURE, PLACE TOPSOIL, SEED & MULCH.

COMMON EXCAVATION	265	CU. YD.
MUCK EXCAVATION	4705	CU. YD.
EMBANKMENT	REG. 8844	CU. YD.
	MUCK 797	CU. YD.
GRANULAR BORROW	10,000	CU. YD.
EXCESS EXC. FROM 7TH AVE	331	CU. YD.
SALVAGE BIT MIXTURE	235	CU. YD.

