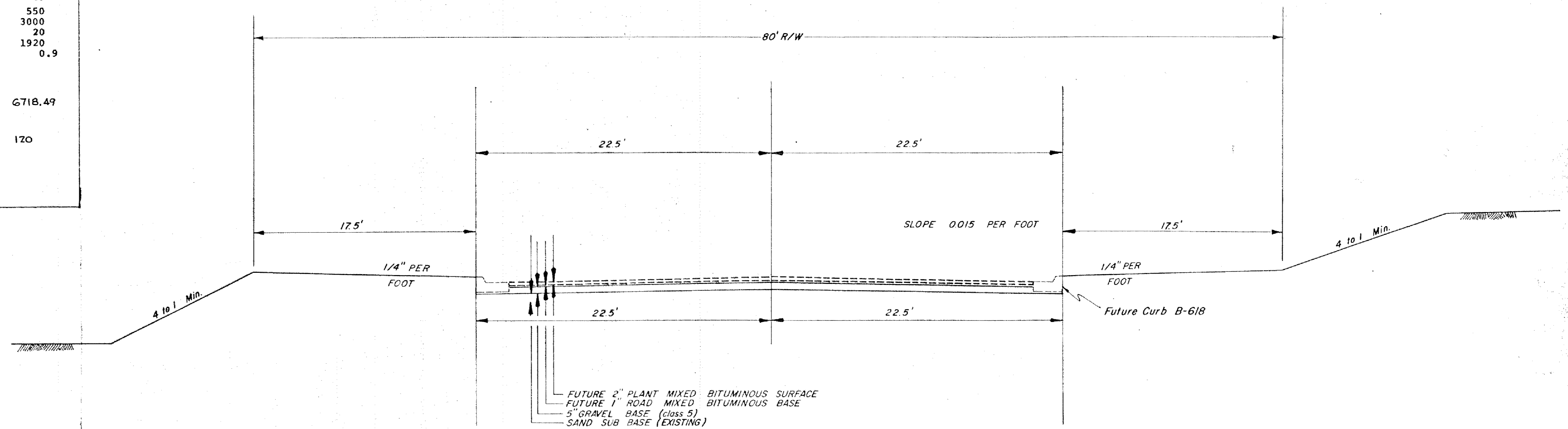


| STATEMENT OF ESTIMATED QUANTITIES |   |   |                            |
|-----------------------------------|---|---|----------------------------|
| SPECIFICATION REFERENCE NUMBER    | ITEM                                      | UNIT  | TOTAL ESTIMATED QUANTITIES |
| Grading                           | 2101.502                                  | Clearing  | Tree 95                    |
|                                   | 2101.507                                  | Grubbing  | Tree 95                    |
|                                   | 2104.510                                  | Remove Fence  | L.F. 1000                  |
|                                   | Spec.Prov.                                | Reset Fence   | L.F. 1000                  |
|                                   | 2104.518                                  | Remove Bituminous Pavement  | Sq.Yd. 400                 |
|                                   | 2105.501                                  | Class A Excavation  | Cu.Yd. 23,703.74           |
|                                   | 2130.501                                  | Water   | M.Gal. 102                 |
|                                   | 2131.501                                  | Calcium Chloride - Type 2   | Ton 14.5                   |
|                                   | 2211.501                                  | Aggregate Base - Class V  | Ton 5195                   |
|                                   | 2341.519                                  | Bituminous Mixture With Filler For DRIVEWAY AND STREET REPLACEMENT. | Sq.Yd. 375                 |
|                                   | 2358.501                                  | Bituminous Material For PRIME                                       | Gal. 40                    |
|                                   | 2575.501                                  | Seed Mixture 5  | Pound 550                  |
|                                   | 2575.505                                  | Sod   | Sq.Yd. 3000                |
|                                   | 2575.511                                  | Mulch Material Type 1   | Ton 20                     |
|                                   | 2575.512                                  | Mulch Material Type 2   | Gal. 1920                  |
| 2575.531                          | Commercial Fertilizer 12-12-12            | Ton 0.9   |                            |
| 2105.505                          | Muck Excavation                           | Cu. Yd. 6718.49   |                            |
| 2501.511                          | CORRUGATED METAL PIPE 15" (TYPE 1) 16GAGE | L.F. 120  |                            |



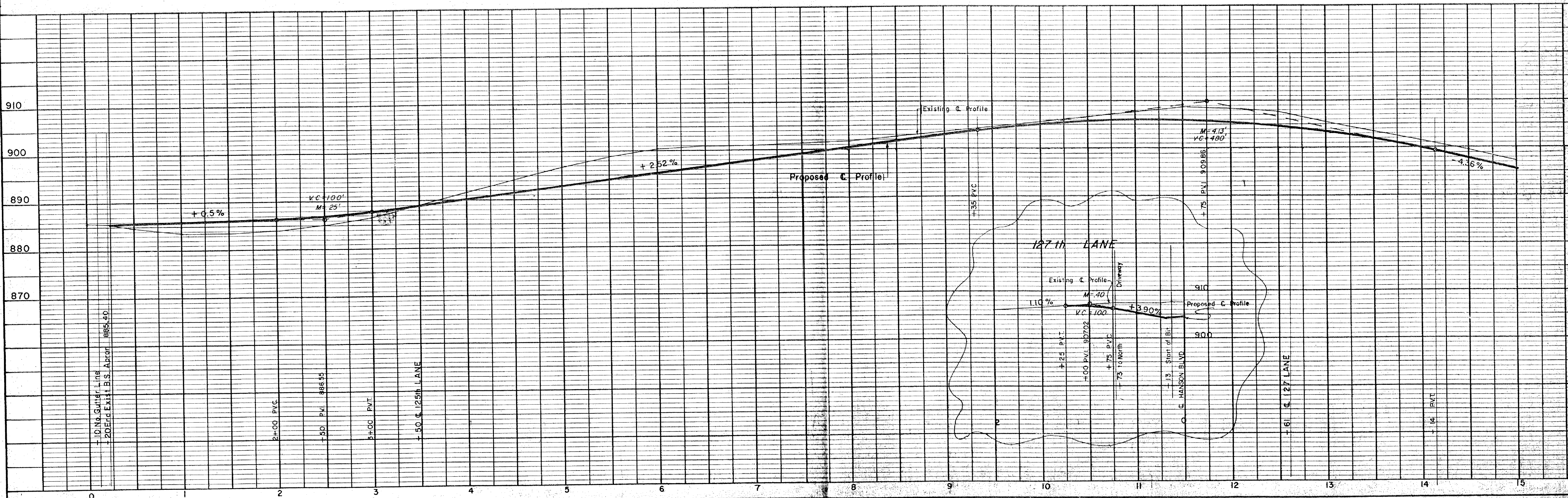
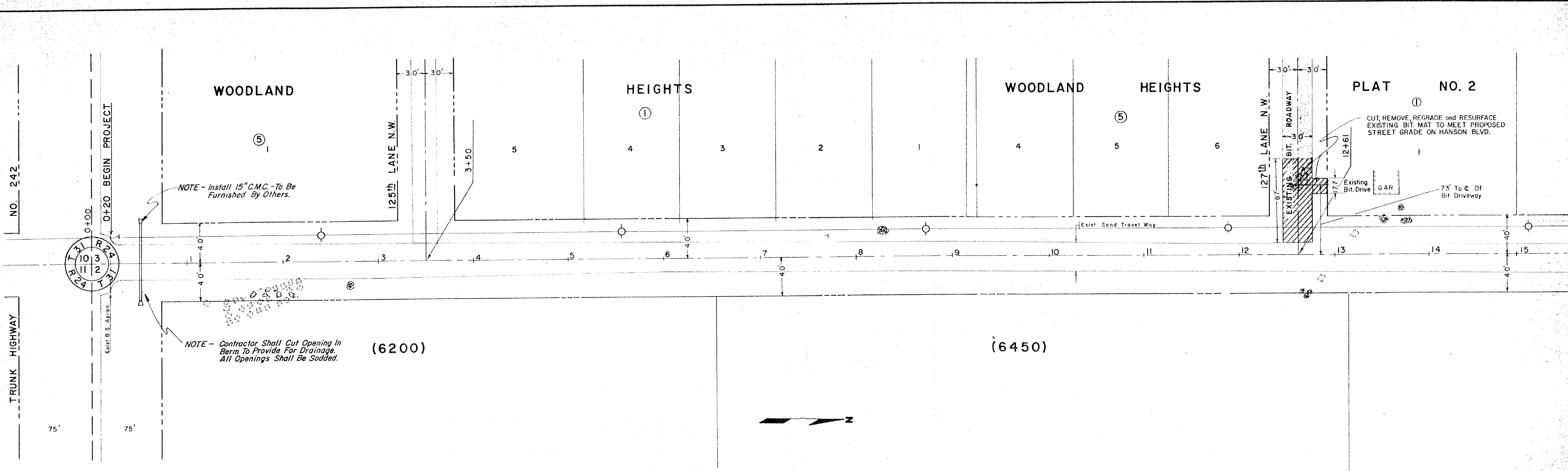
NOTE - The Upper 1 1/2" Of Class V Gravel Shall Be Road-Mixed With MC-800 Bituminous Material Using City Forces.

| PLATE NO. | STANDARD DETAIL PLATES |
|-----------|------------------------|
| 8000-C    | STANDARD BARRICADES    |
| 8002-B    | PERMANENT BARRICADES   |
| 8008-C    | CONTRACTORS SIGN       |

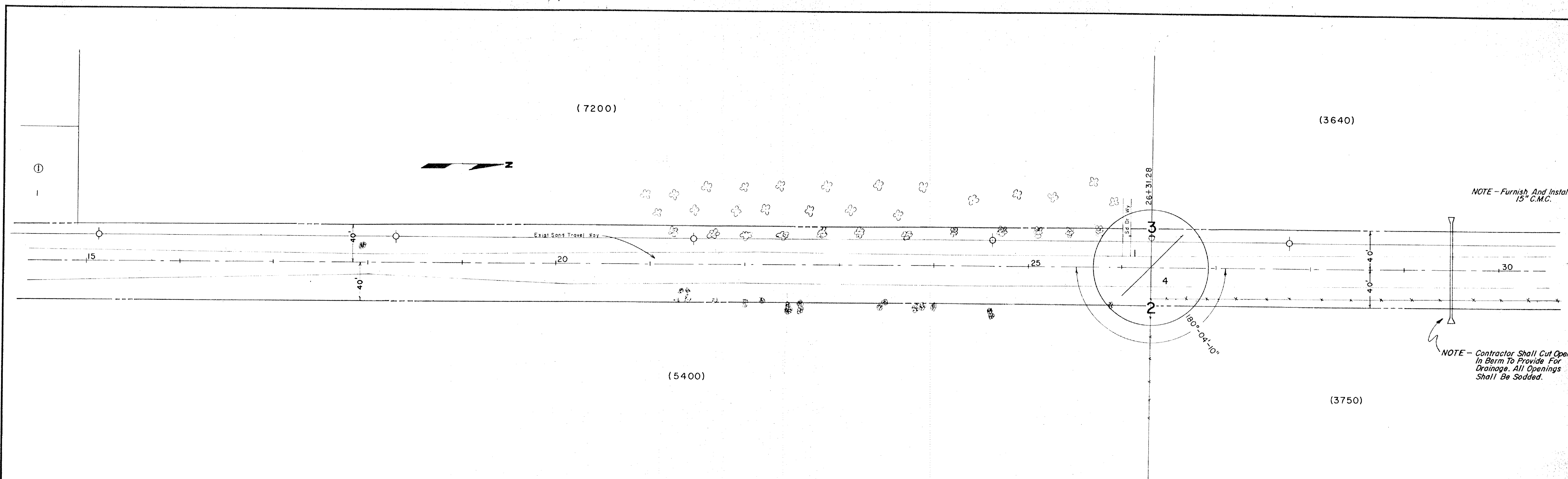
| BASIS FOR DESIGN                                  |   |
|---|---|
| GRAVEL MATERIALS FOR BASE & SUB-BASE (2201, 2202) |   |
| Compacted dry density                             | 140 p.c.f.                                      |
| Water for compaction                              | 20 gal / ton                                    |
| CALCIUM CHLORIDE (2131)                           |   |
| Type 2  | 5.6 lbs. / ton                                  |
| SURFACING (2341)                                  |   |
| Bituminous Mixture For Wearing                    | BA-1 140 lbs. / cu. ft.                         |
| Bituminous Material For Mixture                   | AC-1 5.5% of mixture by weight                  |
| Bituminous Material For Prime                     | MC-30 0.3 gal / sq. yd.                         |
| TURF ESTABLISHMENT (2574)                         |   |
| Seed - Rate Of Application                        | 60 lbs. / acre                                  |
| Fertilizer 12-12-12                               | 200 lbs. / acre                                 |
| Mulch-Type 3                                      | 2 tons of straw and 200 gal. of emulsion / acre |

|          |            |        |
|----------|------------|--------|
| CONVEYED | BY         | DATE   |
| PLANNED  | S.A. HADAK | 8-1-55 |
| NOTED    |            |        |
| ALIGNED  |            |        |
| CHECKED  |            |        |
| BY       |            |        |
| NO. 5    |            |        |

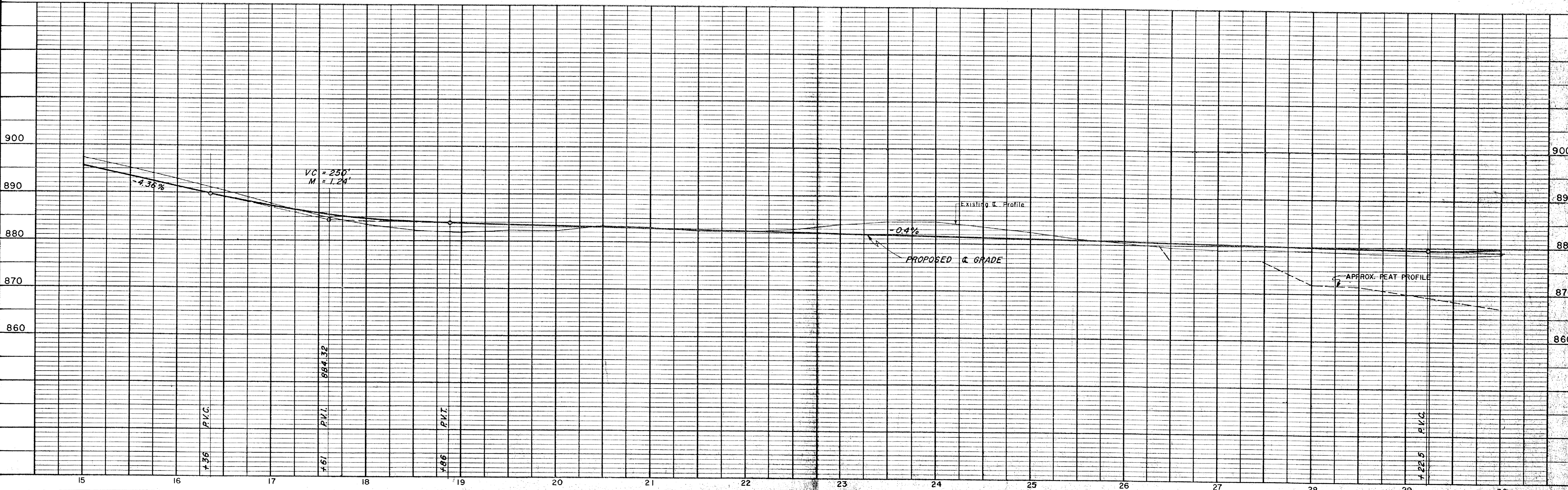
|           |          |            |        |
|-----------|----------|------------|--------|
| PROFILER  | SURVEYED | BY         | DATE   |
| NOTE BOOK | PLANNED  | S.A. HADAK | 8-1-55 |
| NO. 5     | NOTED    |            |        |
|           | ALIGNED  |            |        |
|           | CHECKED  |            |        |
|           | BY       |            |        |
|           | NO. 5    |            |        |



|      |          |    |      |
|------|----------|----|------|
| PLAN | SURVEYED | BY | DATE |
|      | PLOTTED  |    |      |
|      | CHECKED  |    |      |
|      | BY       |    |      |
|      | NO.      |    |      |



|         |                |    |      |
|---------|----------------|----|------|
| PROFILE | SURVEYED       | BY | DATE |
|         | GRADES CHECKED |    |      |
|         | BY             |    |      |
|         | NO.            |    |      |



|                    |      |
|--------------------|------|
| PLAN               | DATE |
| NO.                |      |
| BY                 |      |
| REVISIONS          |      |
| PLotted            |      |
| Alignment Checked  |      |
| RT. of Way Checked |      |

|                          |      |
|--------------------------|------|
| PROFILE                  | DATE |
| NO.                      |      |
| BY                       |      |
| REVISIONS                |      |
| Plotted                  |      |
| Grades Checked           |      |
| S.M. Noted               |      |
| Structure Notations Chkd |      |

