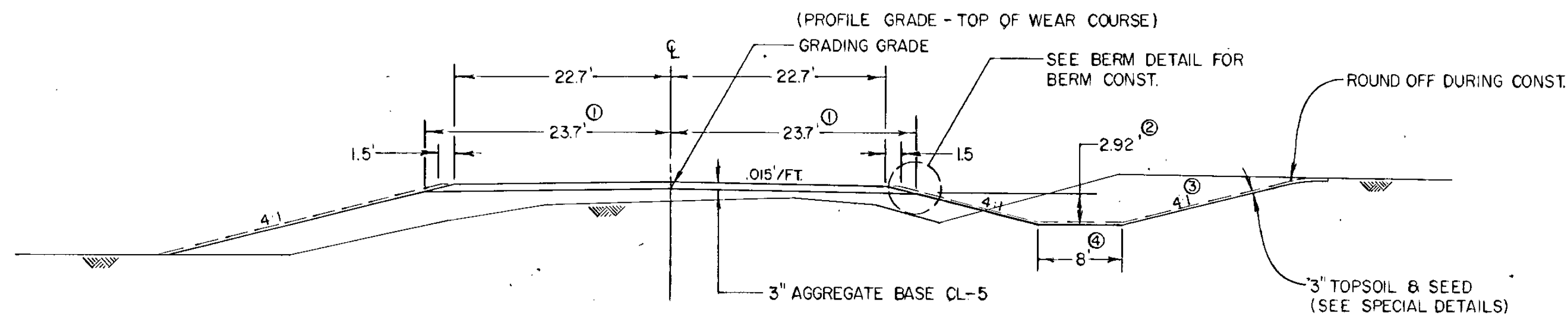


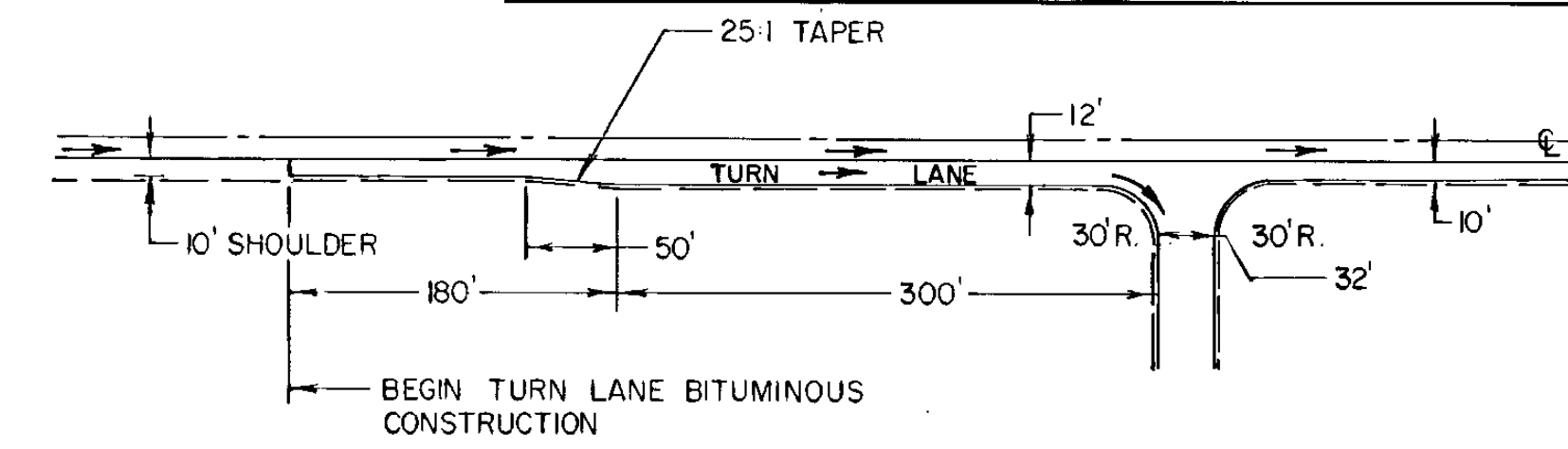
TYPICAL SECTIONS

GRADING & BASE SECTION



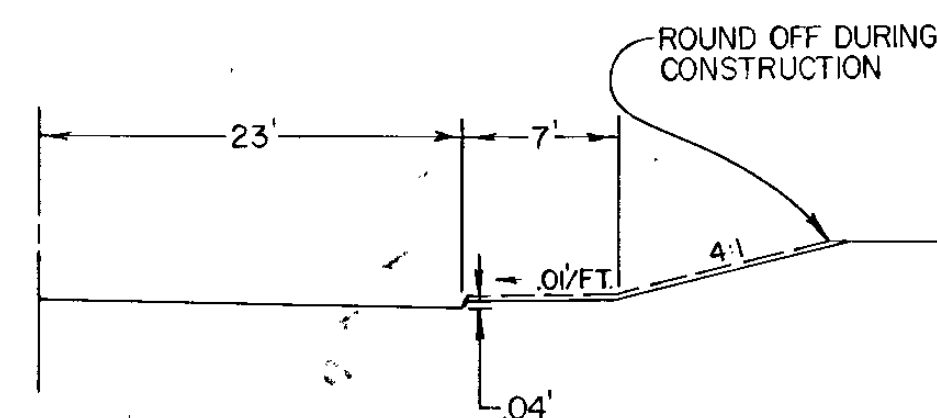
- ① 2' WIDER IN TURN LN. AREAS
SEE TURN LANE TYPICAL FOR LOCATIONS.
- ② SEE X-SECTIONS FOR SPECIAL DITCHES
- ③ SEE X-SECTIONS FOR MODIFIED SLOPES
- ④ SEE X-SECTIONS FOR VAR. DITCH WIDTHS

TYPICAL RIGHT TURN LANE & ROAD APPROACH



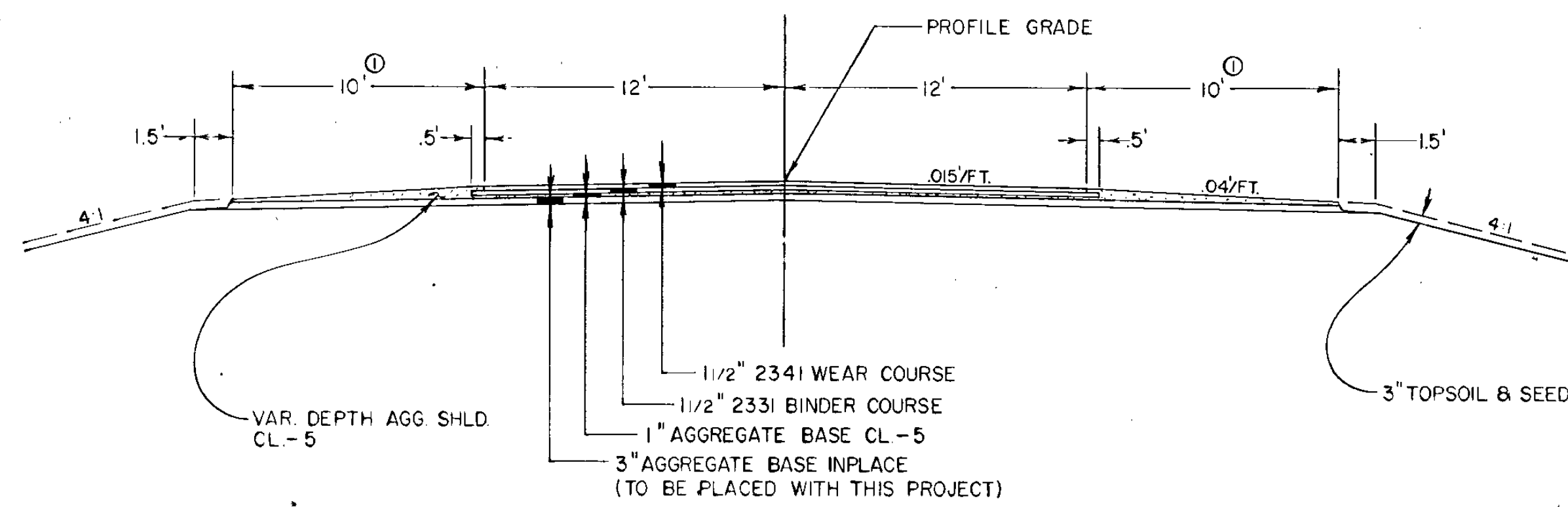
LOCATIONS	
STA.	STA.
0+12	- 3+62
26+17	- 29+67
32+87	- 36+37
47+39	- 50+89
52+86	- 56+36
93+18	- 100+20

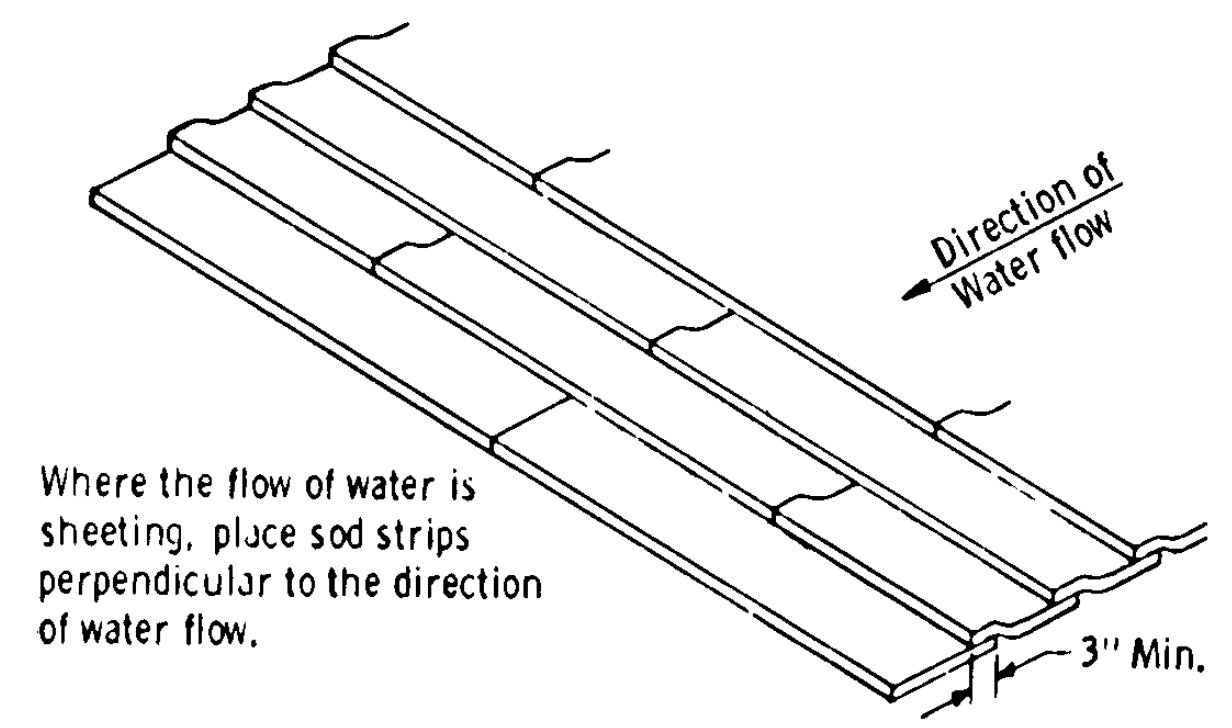
BERM SECTION



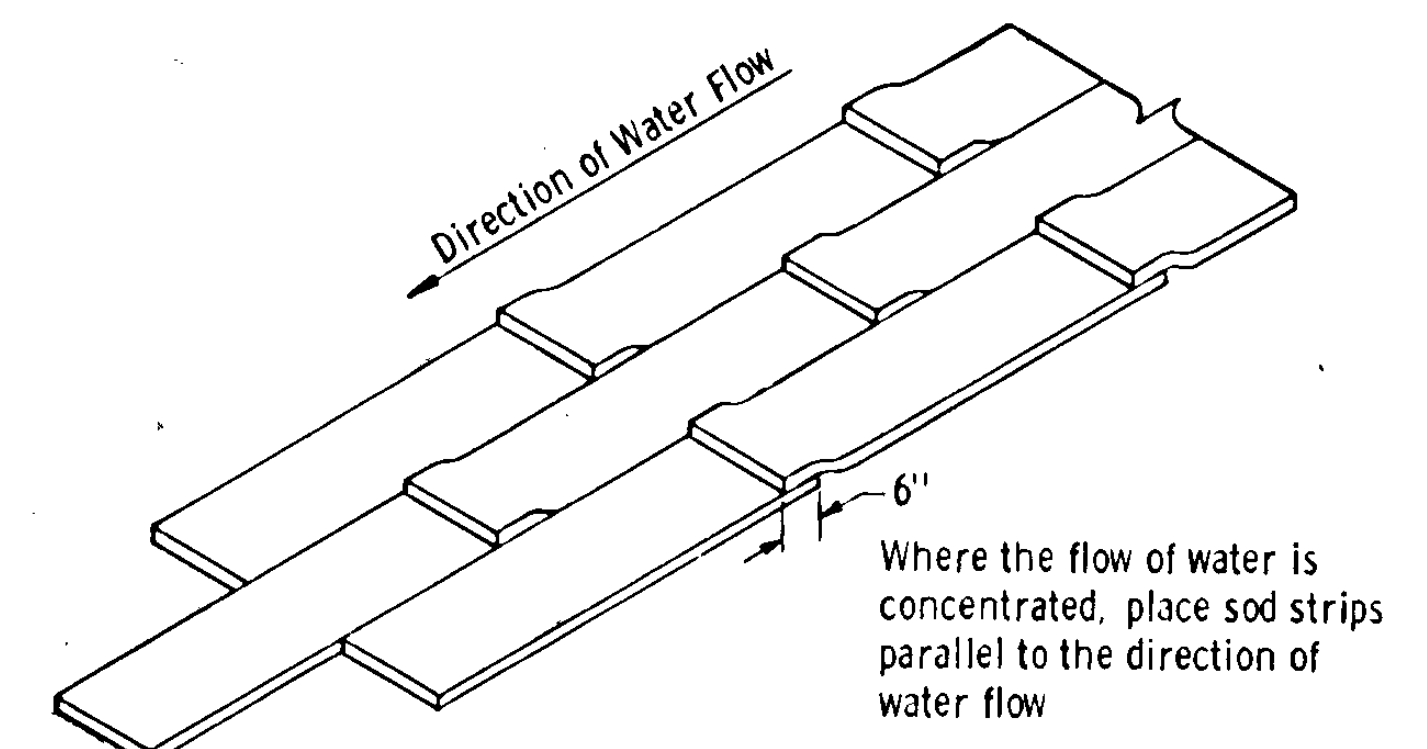
LOCATIONS	
STA.	STA.
23+40	- 25+75
38+22	- 40+43
60+00	- 68+42

FUTURE BITUMINOUS SECTION



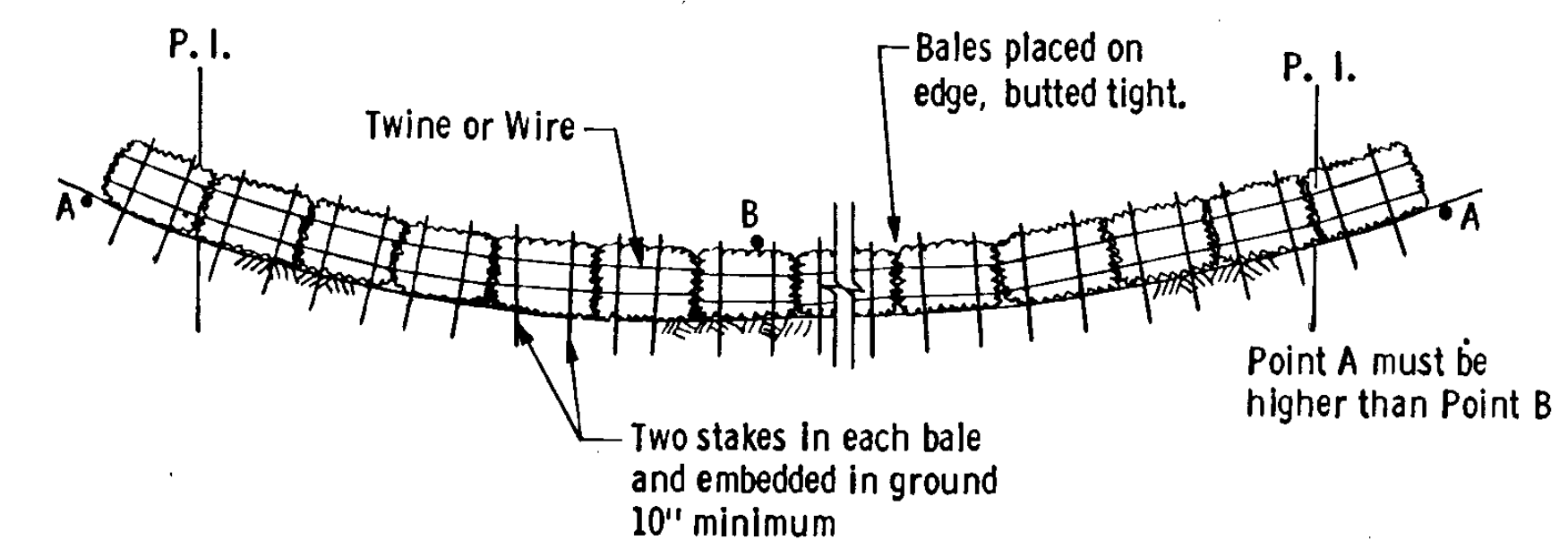


SHINGLING SOD

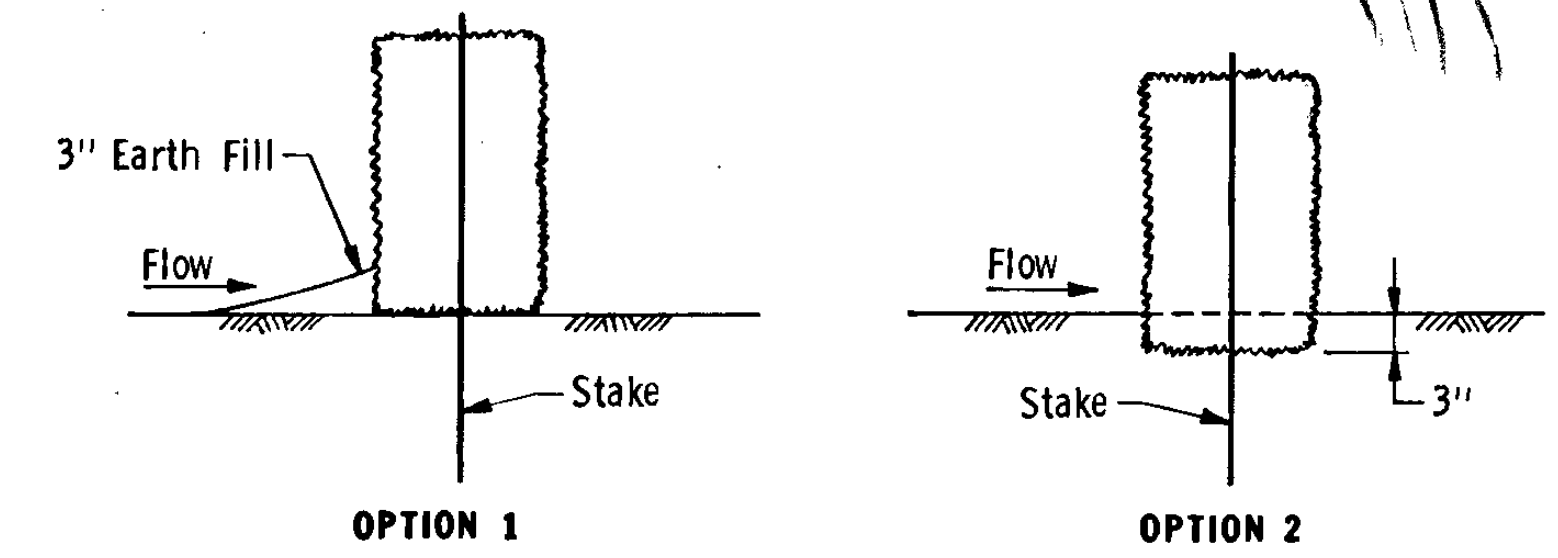


OVERLAPPING SOD

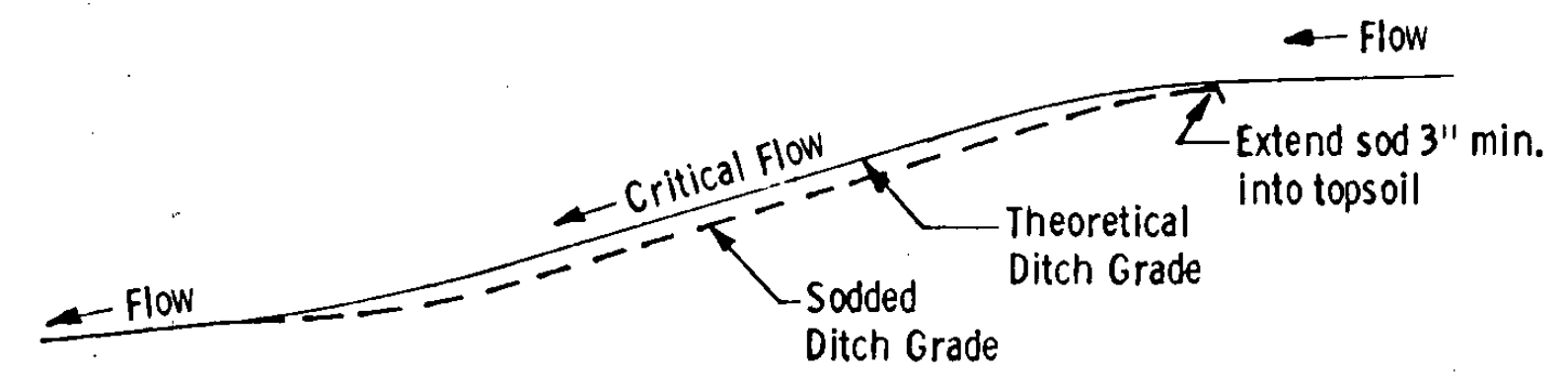
SPECIAL SOD PLACEMENT TECHNIQUES



BALE HAY OR STRAW DITCH CHECK

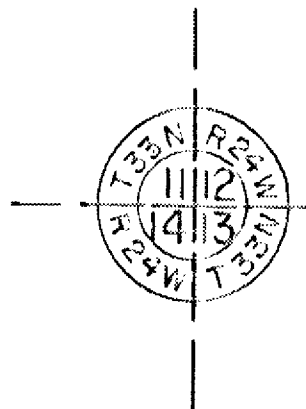


DITCH CHECK SECTIONS



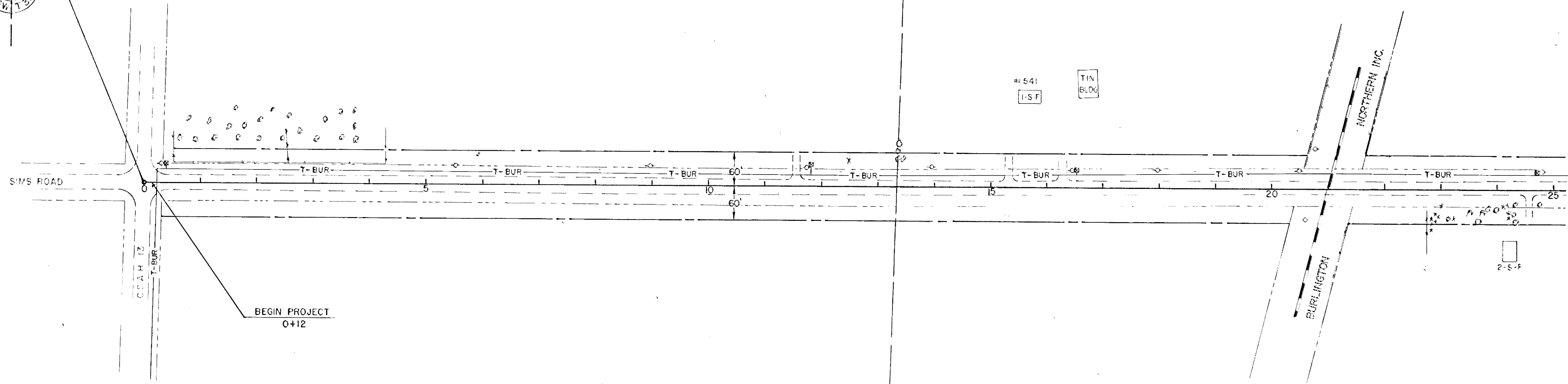
DITCH PROFILE

SODDED DITCH DETAILS

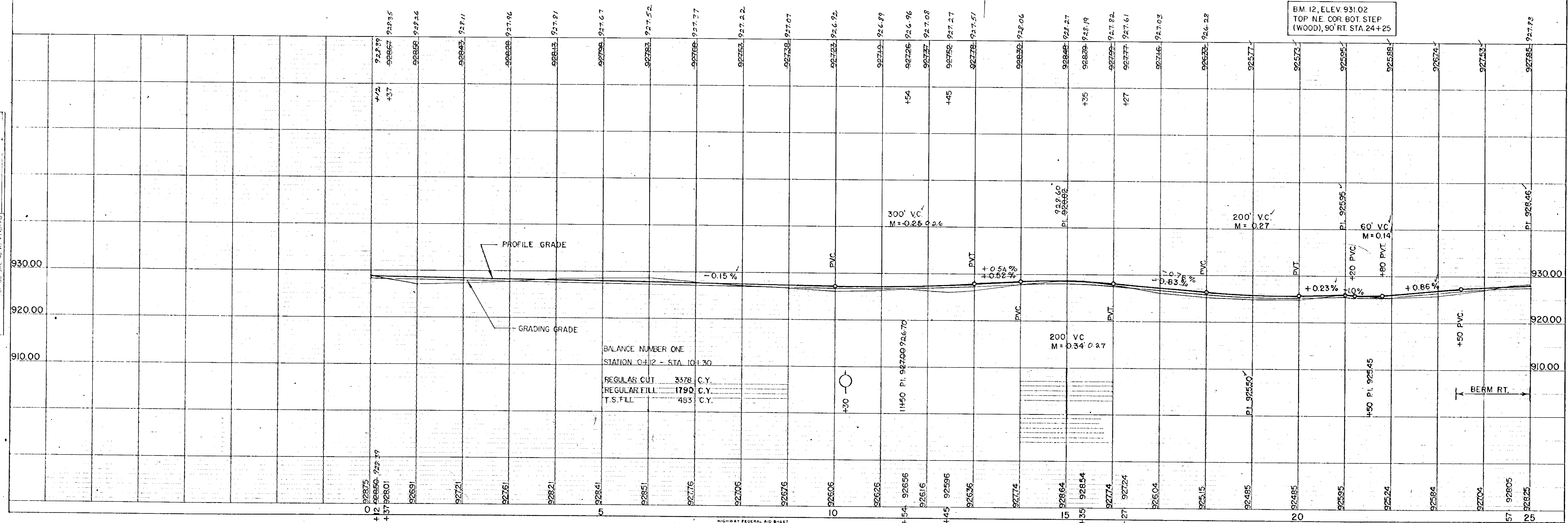


BM. 10, ELEV. 927.46
R.R. SPIKE IN 6" OAK
80' LT. STA. 14+45

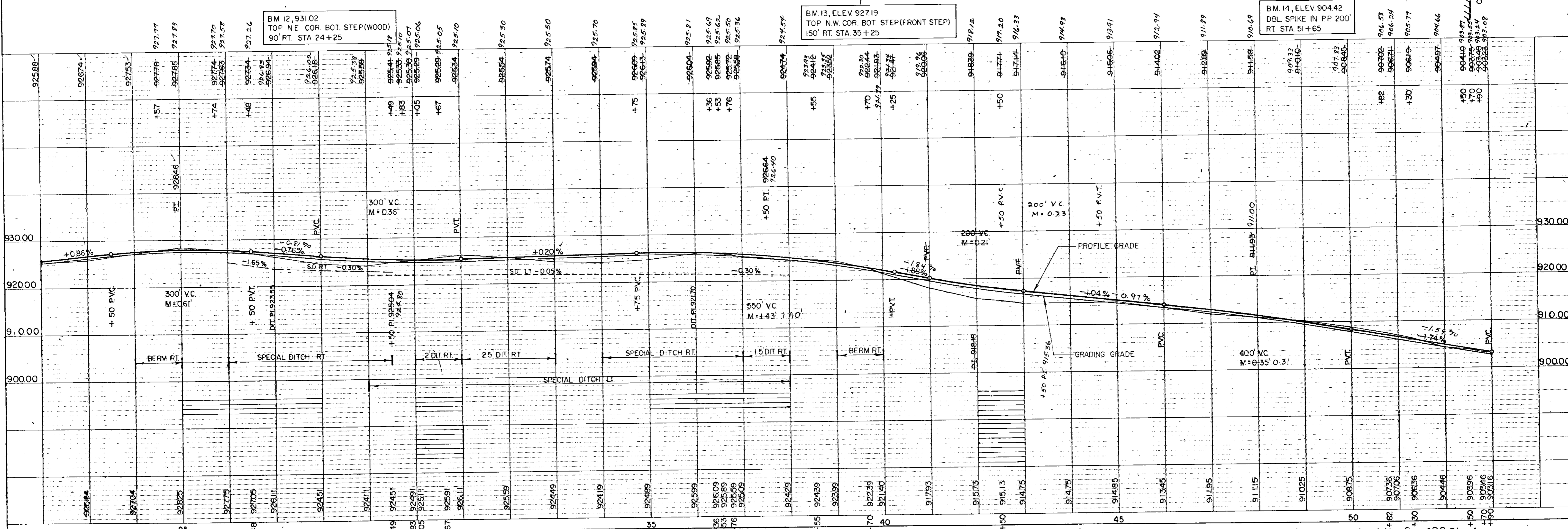
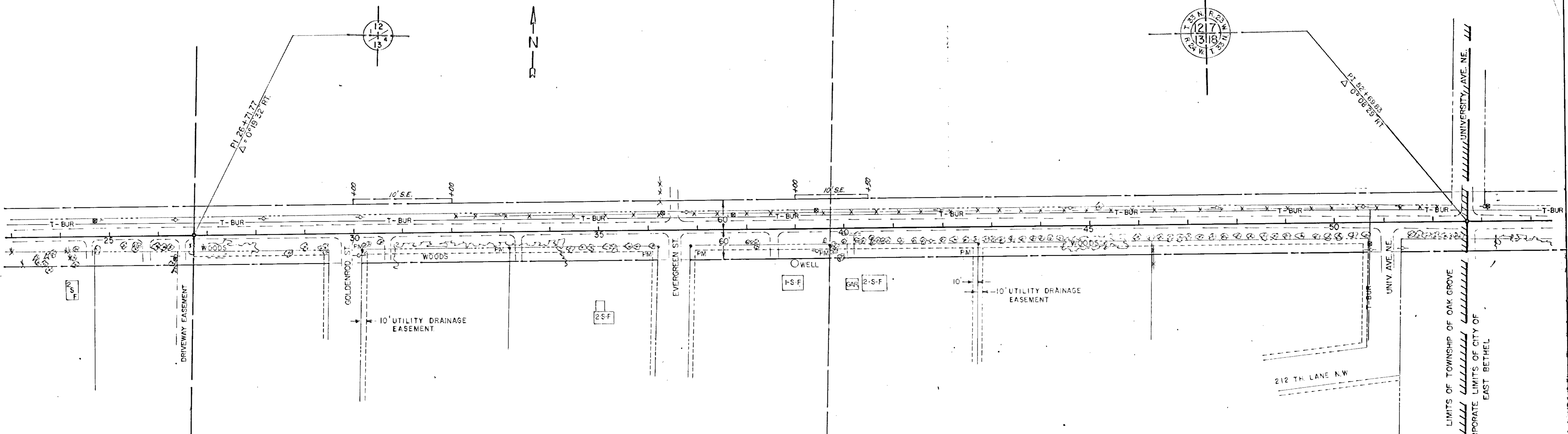
BM. 11, ELEV. 929.99
TOP SW. COR. PATIO
DECK 165' LT. STA. 15+48



BM. 12, ELEV. 931.02
TOP N.E. COR. BOT. STEP
(WOOD), 90' RT. STA. 24+25



BALANCE NUMBER ONE
STATION 0+12 - STA. 10+30
REGULAR CUT 3378 C.Y.
REGULAR FILL 1790 C.Y.
T.S. FILL 483 C.Y.



BM. 12, 931.02
TOP NE COR. BOT. STEP(WOOD)
90' RT. STA. 24+25

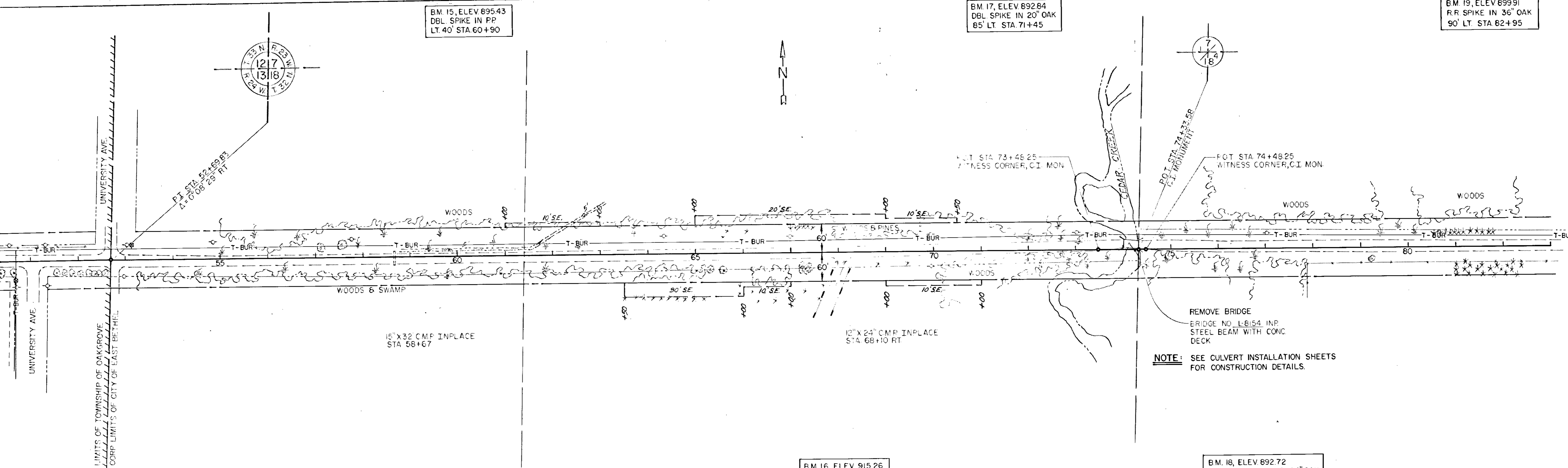
BM. 13, ELEV 92719
TOP N.W. COR. BOT. STEP(FRONT STEP)
150' RT. STA. 35+25

BM. 14, ELEV. 90442
DBL SPIKE IN PP 200'
RT. STA. 51+65

BM. 15, ELEV 895.43
DBL SPIKE IN PP
LT. 40' STA. 60+90

BM. 17, ELEV 892.64
DBL SPIKE IN 20" OAK
85' LT. STA. 71+45

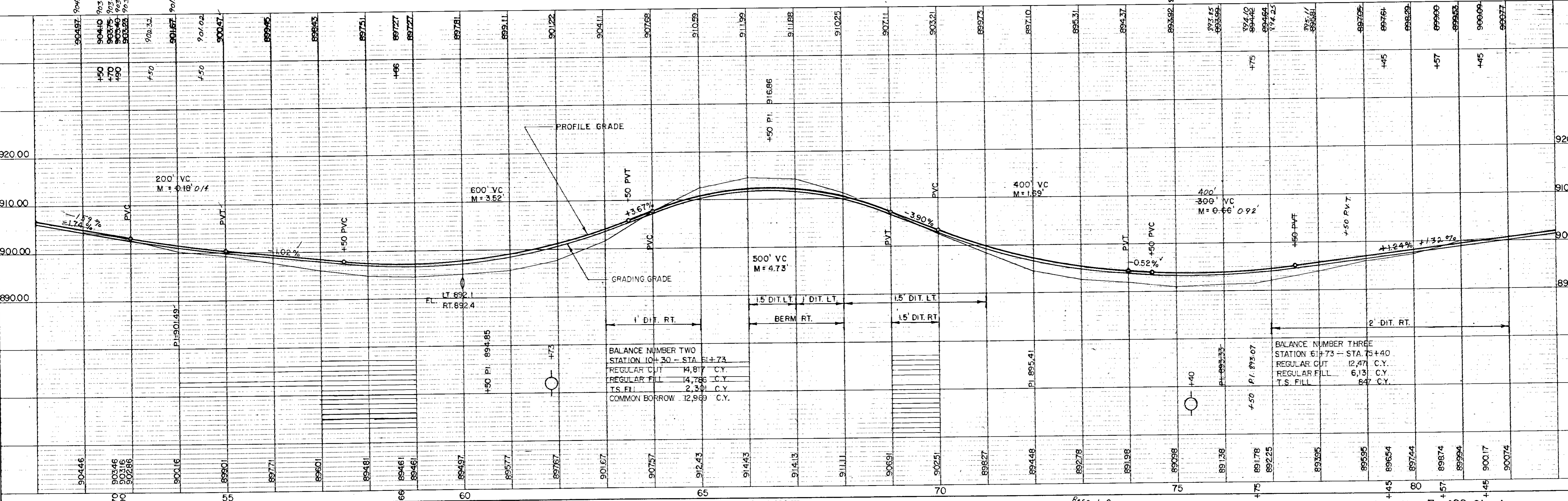
BM. 19, ELEV 899.91
R.R. SPIKE IN 36" OAK
90' LT. STA. 82+95



NOTE: SEE CULVERT INSTALLATION SHEETS FOR CONSTRUCTION DETAILS.

BM. 16, ELEV 915.26
DBL SPIKE IN 8" ELM
70' RT. STA. 68+10

BM. 18, ELEV 892.72
R.R. SPIKE IN TRIPLE 24" OAK
65' RT. STA. 76+85



BALANCE NUMBER TWO
STATION 10+30 - STA. 61+73

REGULAR CUT	14,817	C.Y.
REGULAR FILL	14,786	C.Y.
T.S. FILL	2,501	C.Y.
COMMON BORROW	12,969	C.Y.

BALANCE NUMBER THREE
STATION 61+73 - STA. 75+40

REGULAR CUT	12,477	C.Y.
REGULAR FILL	6,131	C.Y.
T.S. FILL	847	C.Y.

