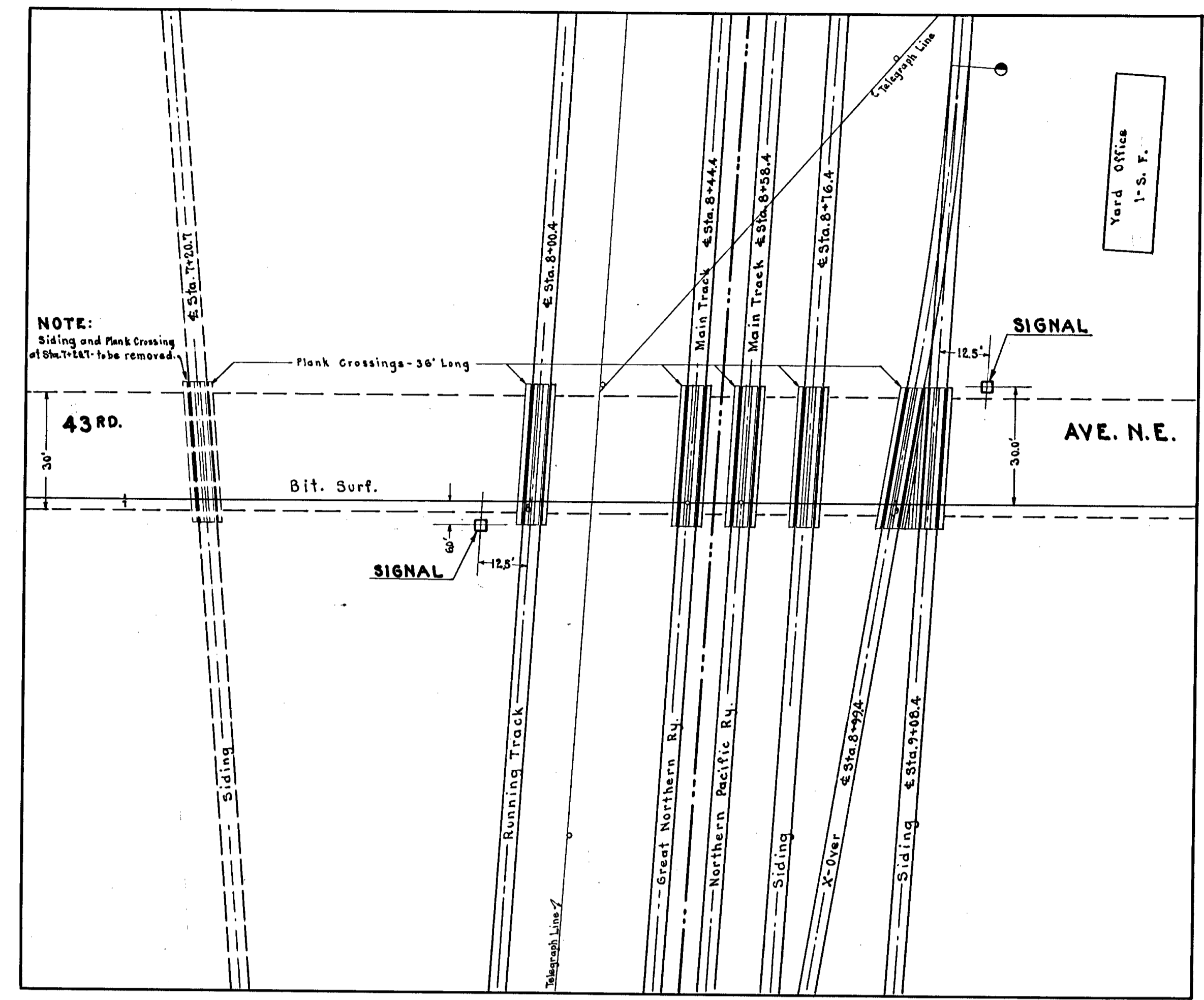
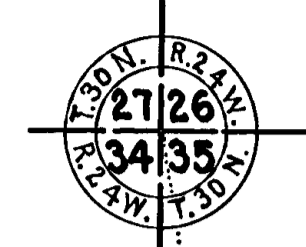
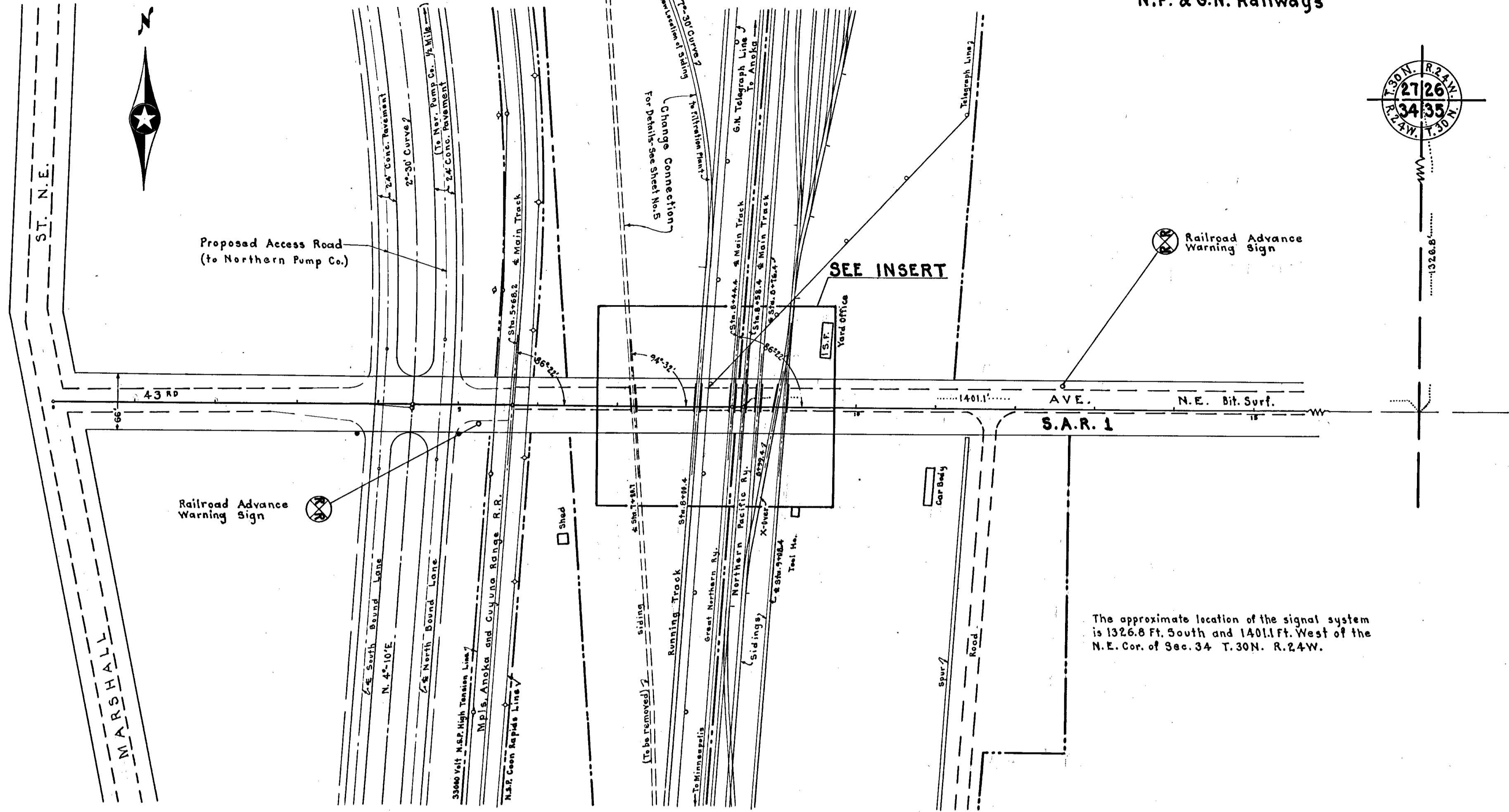


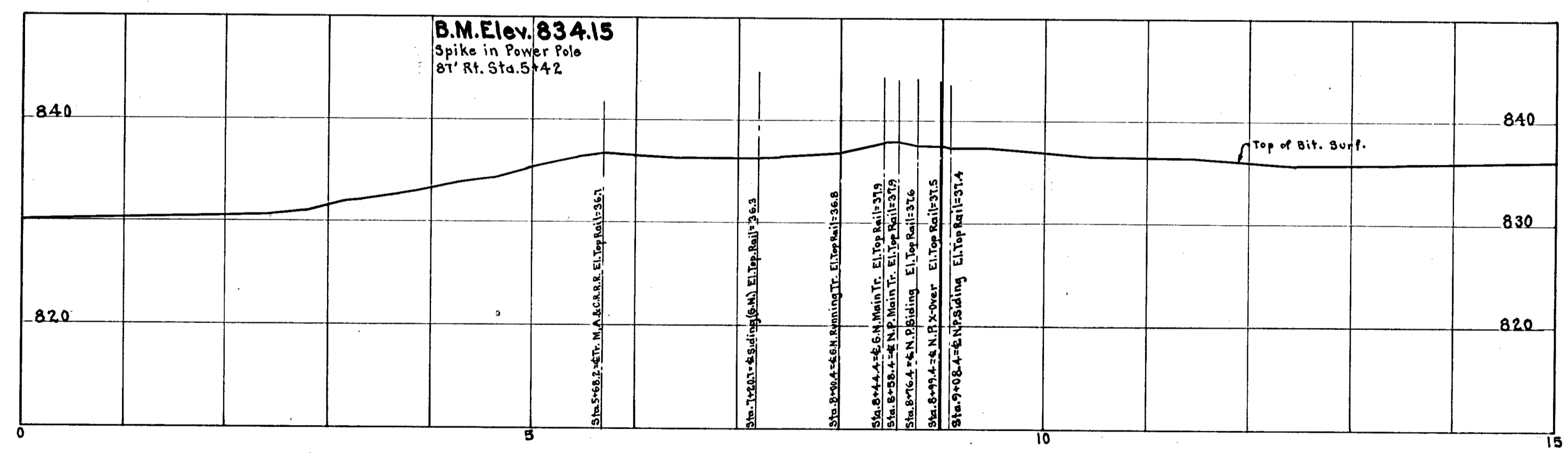
**43 RD. AVE. N.E.**  
S.A.R. No. 1  
N.P. & G.N. Railways

**PLAN**  
1" = 100'



**INSERT**  
1 inch = 25 feet

**PROFILE**  
Hor. 1" = 100' Vert. 1" = 10'



**ESTIMATED QUANTITIES**

SPECIFICATIONS No.	ITEM	UNIT	TOTAL ESTIMATED QUANTITIES
2560.5	Highway-Railroad Grade Crossing Signal System (includes 2 Signals & 2 R.R. Adv. Warning Signs) in place	Signal System	1.
2561.5	do.	do.	1.
2562.5	do.	do.	1.

**SIGNALS:**

- The locations at which signals are to be placed will be determined at the site. Those indicated on the plans are only approximate.
- The "Number of Tracks" signs shall bear the message "6 tracks".
- A bell shall be installed on each signal as indicated on the plans.
- The Contractor shall stencil the Federal Aid Project Number F.A.S. 197A on roadway side of each signal case using U.S.P.R.A. Joint Board Standard 2" Series "C" Black Letters.

**RAILROAD ADVANCE WARNING SIGNS:**

- Each sign shall be erected on two steel posts in accordance with details shown on sheet No. 3 of the plans.

43 rd. Ave. N.E.  
North of Minneapolis  
1/4 Mi. So. of Northern Pump Co.  
N.P. Ry. & G.N. Ry.