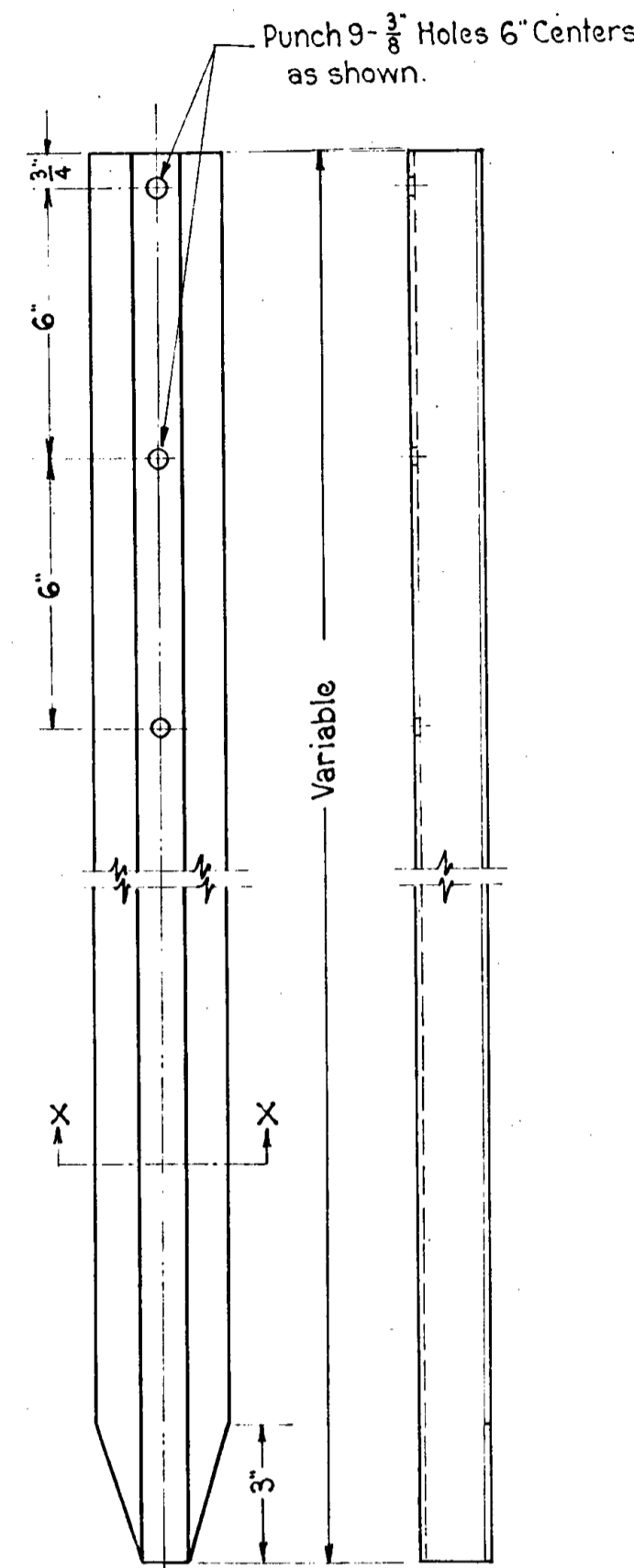


# RAILROAD ADVANCE WARNING SIGN

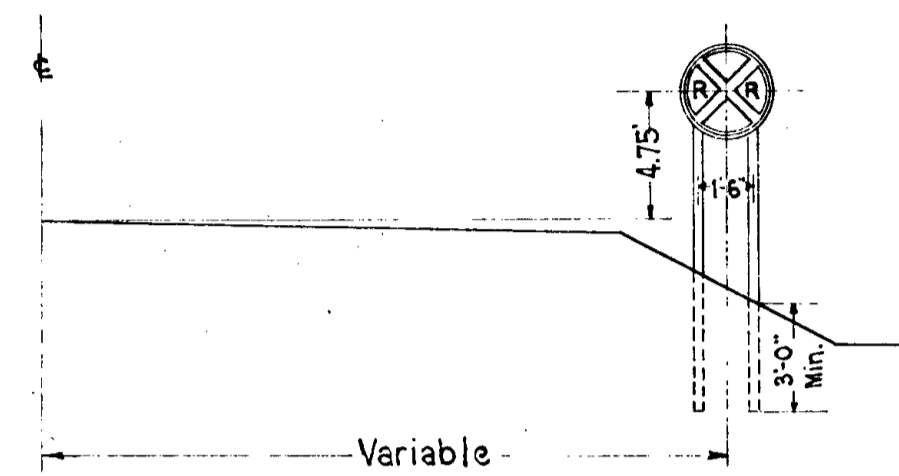
FED. ROAD DIST. NO.	STATE	F.A.S.S.	SEC.	FISCAL YEAR	SHEET NO.	TOTAL SHEETS
4	MINN.	191A	1	1941	3	9



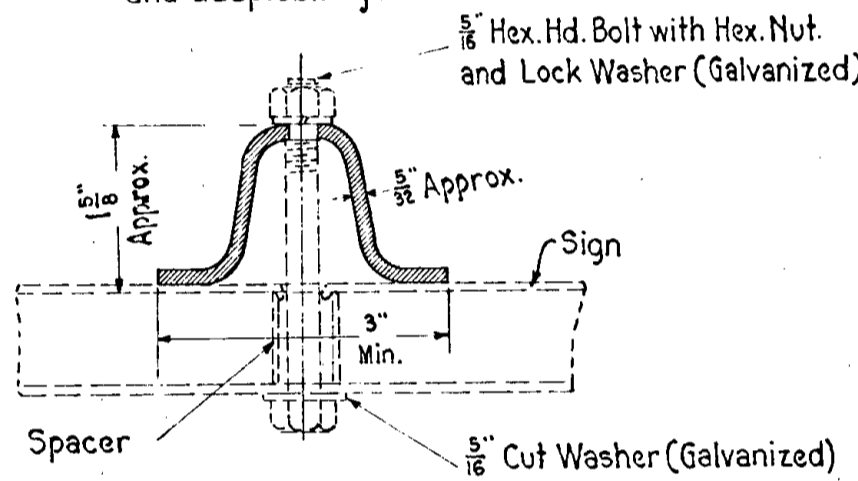
**STEEL POST**

2 Req'd. - 2.15 Lbs. Min. per ft. in Length  
Paint with two coats of Black, Carbon Pigment, Non-Asphaltic Paint.  
Scale 3/4" = 1'-0"

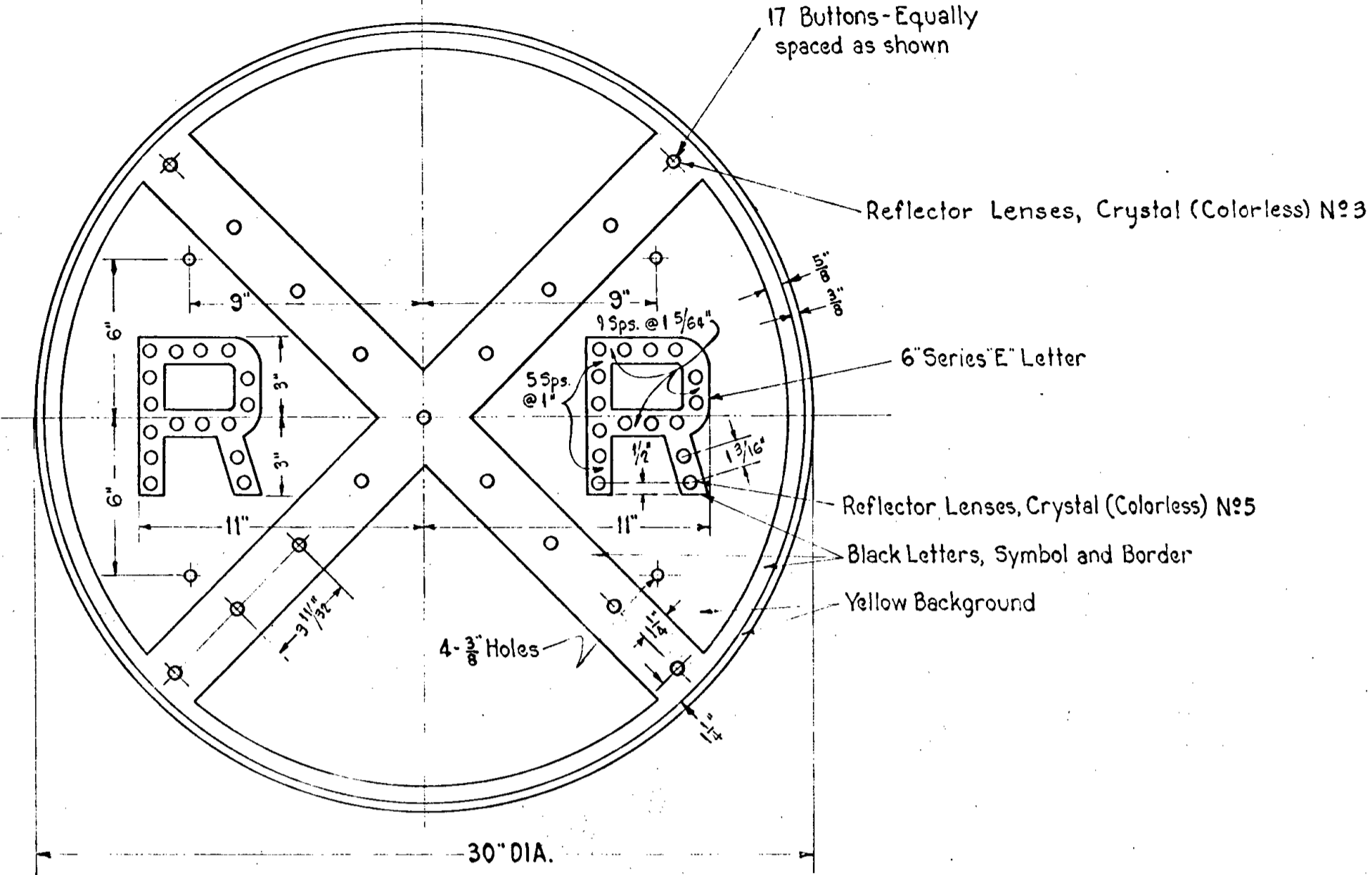
**TYPICAL INSTALLATION FOR RURAL AREA**



Note: This Section or equivalent in strength and adaptability to be used

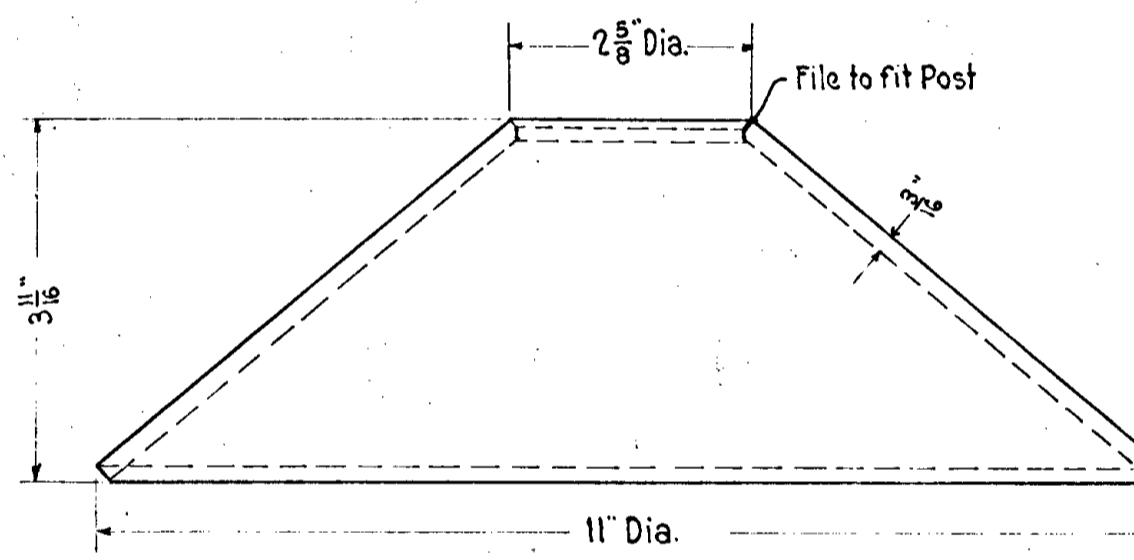
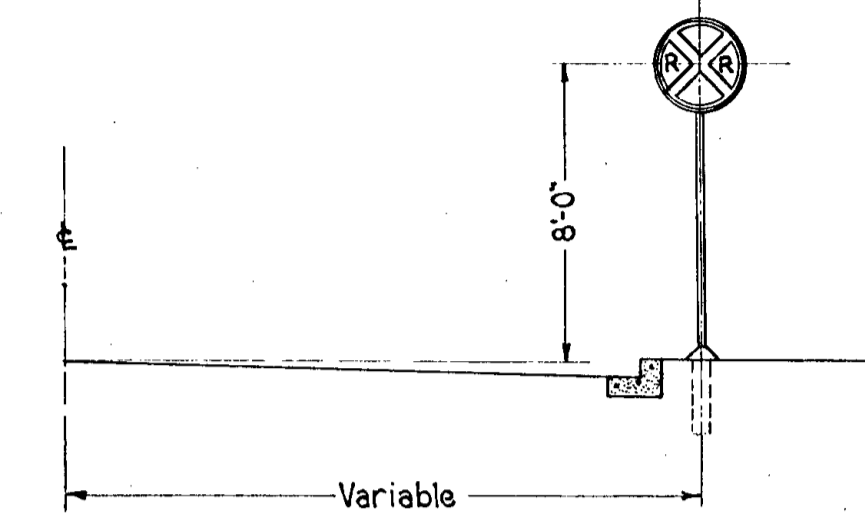


**SECTION X-X**  
Scale 6/8" = 1'

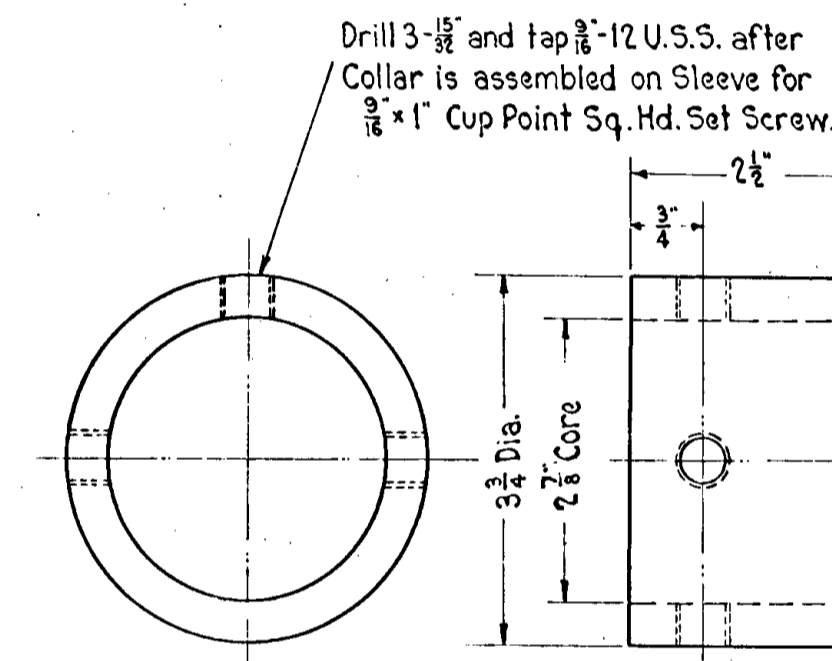


**SIGN**  
No. 16 U.S. STD GAUGE METAL  
Scale: 3/8" = 1'

**TYPICAL INSTALLATION FOR BUSINESS AND RESIDENTIAL AREA**

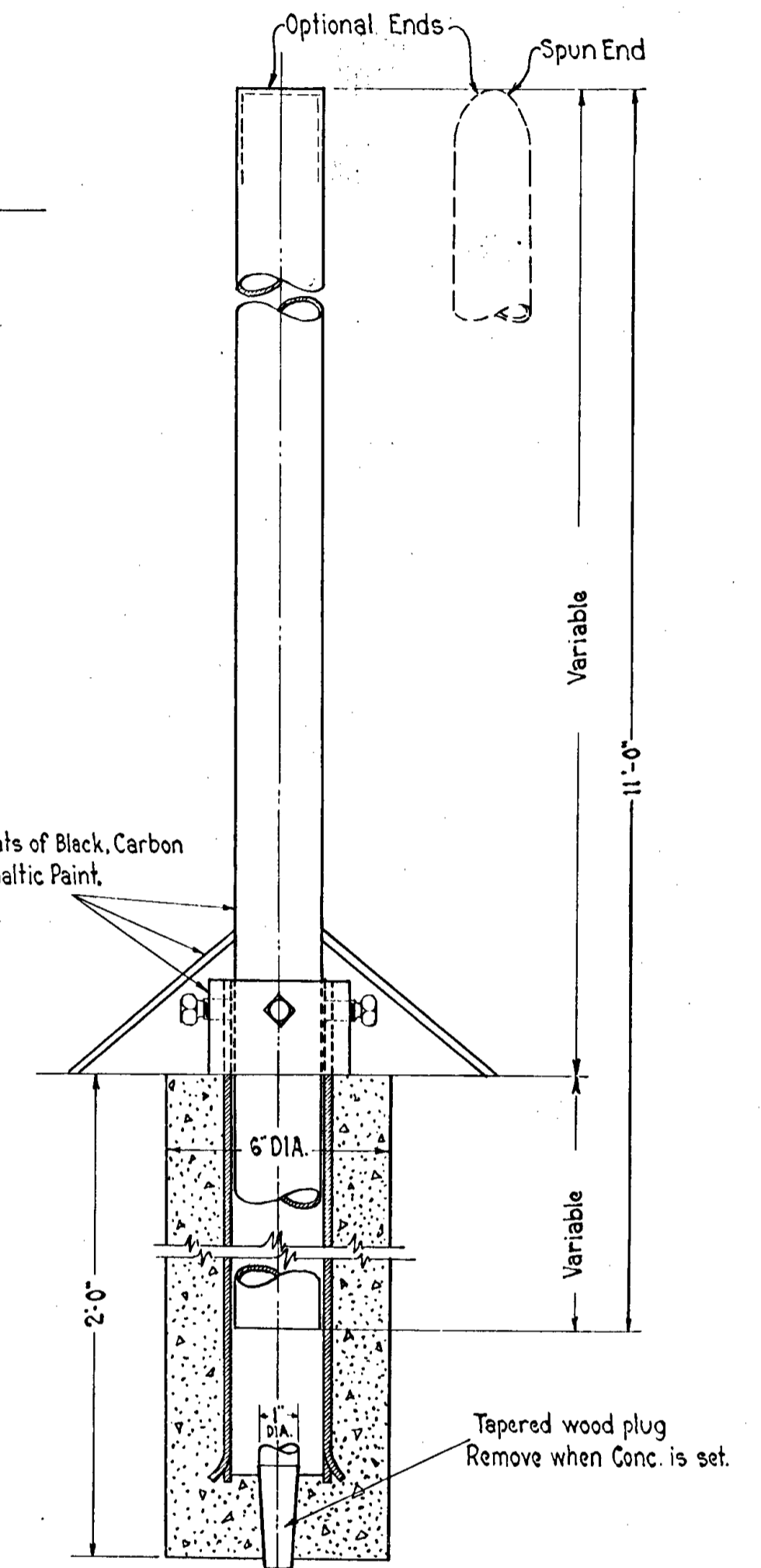


**CONE**  
One Req'd. - Pressed Steel  
Scale 6/8" = 1'

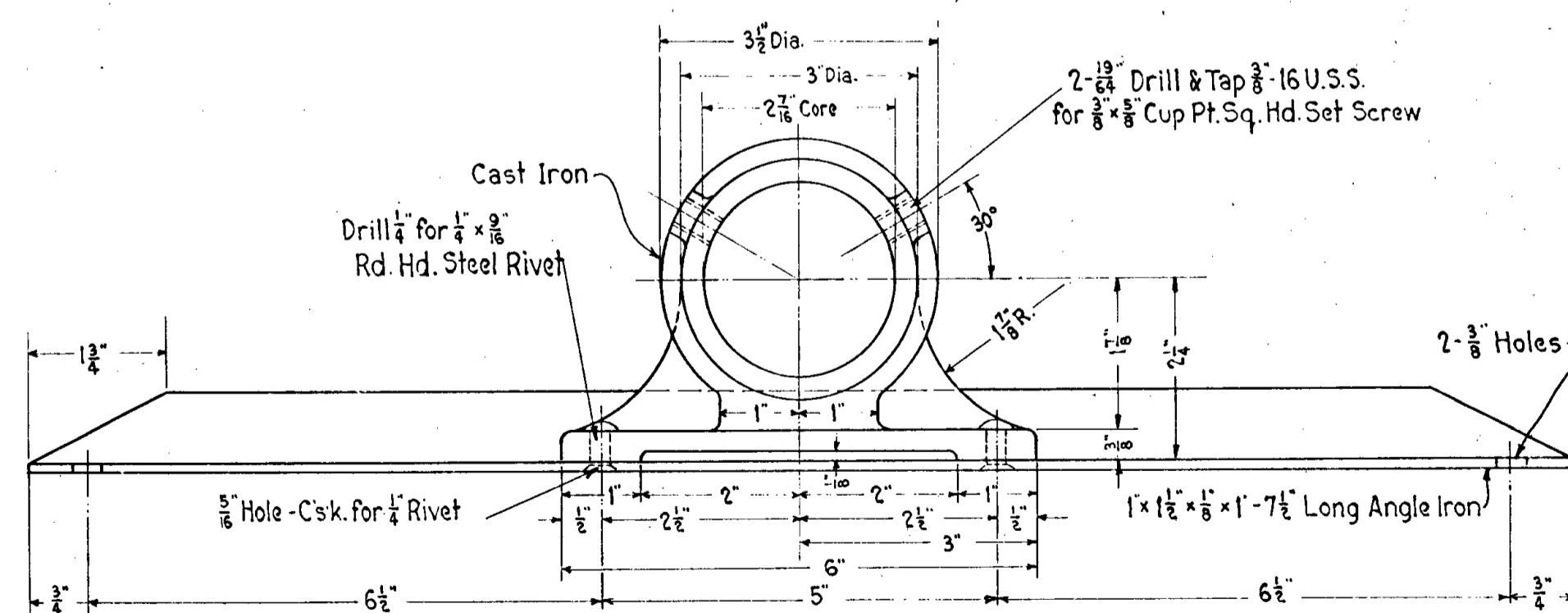


**COLLAR**  
One Req'd. - Cast Iron  
Scale 6/8" = 1'

Paint with Two Coats of Black, Carbon Pigment, Non-Asphaltic Paint.

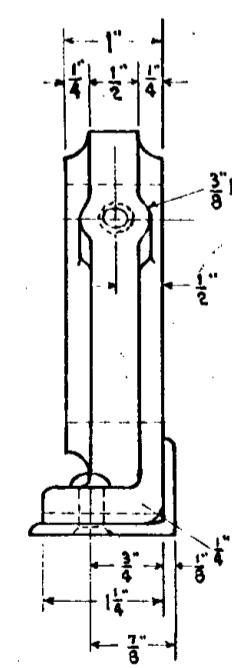


**MOUNTED ASSEMBLY**  
Scale 3/4" = 1'



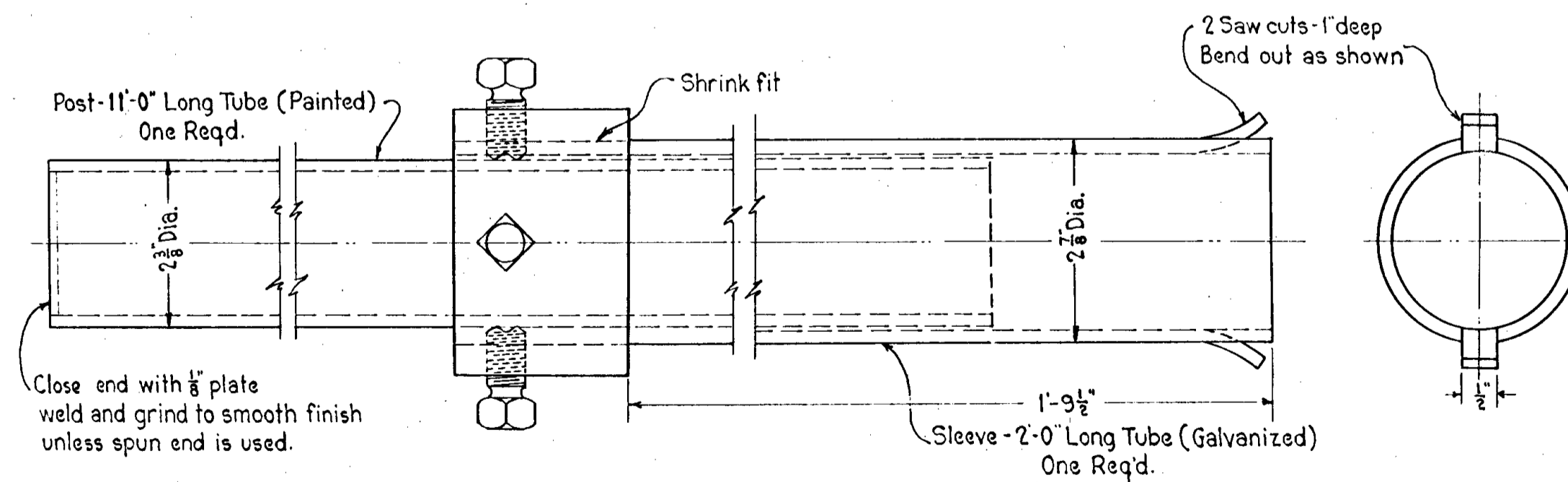
**ASSEMBLY OF POST CLAMP & BRACKET**

Two Req'd.  
Clamp and Bracket to be painted with Yellow sign enamel for new signs as specified in Section 3541 of the specifications for Highway Construction dated July 1st 1938.  
Scale 6/8" = 1'



**ASSEMBLY OF SLEEVE & POST.**

Scale 6/8" = 1'



STATE OF MINNESOTA  
DEPARTMENT OF HIGHWAYS  
DETAILS OF APPROVED  
RAILROAD ADVANCE WARNING SIGN

Recommended for Approval *O. L. Kipp*  
CONSTRUCTION ENGINEER

Approved *J. P. Ellison* 5-13-1936  
CHIEF ENGINEER

43 RD. Ave. N.E.  
North of Mpls.  
N.P. & O.N. Rys.