

COON RAPIDS BLVD.

FLINTWOOD

93RD AVE. NW.

ST. NW.

CREEK

PLEASURE

SPRINGBROOK

DRIVE

RESTAURANT

OFFICE

OFFICE

MH 27 (27"Ø)
CAST. R-1733
R.E. 887.0±
I.E. 884.87

REMOVE EXIST. F.E.S. CONSTRUCT
MH 27 AROUND EXIST. LINE

EXIST. 12" I.E. 884.87

EXIST. CB
G.L. 887.76
I.E. 885.75

EXIST. CB
G.L. 886.53
I.E. 884.5

REMOVE EXIST. F.E.S.
EXTEND LINE TO MH 26

EXIST. 12" I.E. 884.14

REMOVE EXIST. F.E.S. &
CONSTRUCT MH 26
AROUND EXIST. PIPE

88'-12" RCP
CL 3 @ 2.12%

24" CMP

EXIST. MEDIAN

340

SEE SHEET

CB 10

MH 23

MH 20

MH 21

MH 22

MH 24

MH 25

MH 26

25'-12" RCP
CL 3 @ 1.0%

CB 8

53'-12" RCP CL 3 @ 1.0%

50'-12" RCP
CL 3 @ 2.42%

REMOVE & REPLACE EXIST. CASTING

8" SAN SEWER

EXIST. 8" DIP

15" CMP

330

335

CB 9 (27"Ø)
CAST. R-3250-A
G.L. 882.50
I.E. 879.50

CB 8 (24"x36")
CAST. R-3246-B
G.L. 882.60
I.E. 878.97

EXIST. 6" DIP
STUB

EXIST. 8" SAN
STUB

RECONSTRUCT
EXISTING CB.
MH 22 (48"Ø)
CAST. R-3250-A
G.L. 884.4
12" I.E. 880.00

EXIST. 6" DIP
STUB

EXIST. 8" SAN
STUB

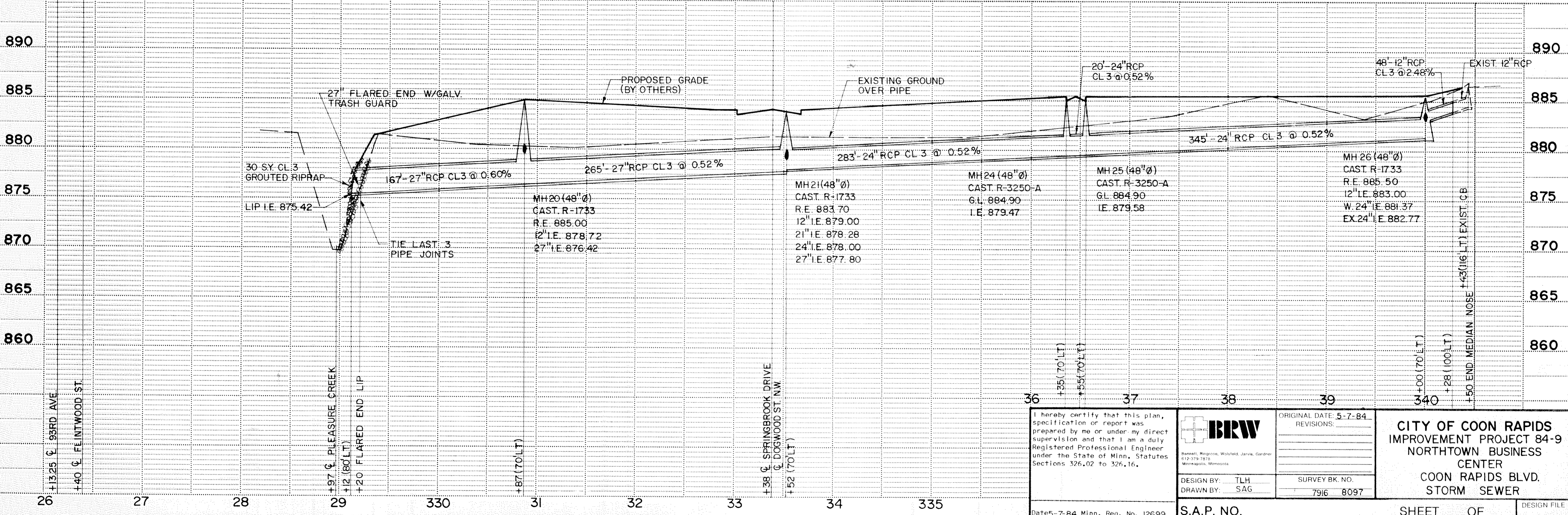
NOTE: FINAL ELEVATION OF MH 20 SHALL BE COORDINATED
WITH OWNER AT TIME OF CONSTRUCTION.

NOTE: CL ON COON RAPIDS BOULEVARD HAS BEEN IDENTIFIED
AS THE MEDIAN AND MAY NOT BE PLOTTED CL



50'

PRELIMINARY
PRINTED
MAY - 8 1984
DRAWN BY



I hereby certify that this plan, specification or report was prepared by me or under my direct supervision and that I am a duly Registered Professional Engineer under the State of Minn. Statutes Sections 326.02 to 326.16.



ORIGINAL DATE: 5-7-84
REVISIONS:

DESIGN BY: TLH
DRAWN BY: SAG

SURVEY BK. NO.
7916 8097

CITY OF COON RAPIDS
IMPROVEMENT PROJECT 84-9
NORTHTOWN BUSINESS CENTER
COON RAPIDS BLVD.
STORM SEWER

Date 5-7-84 Minn. Reg. No. 12699

S.A.P. NO.

SHEET OF DESIGN FILE No. 16-8405