

COON RAPIDS BLVD.

FLINTWOOD

93RD AVE. NW.

ST. NW.

CREEK

SPRINGBROOK

DRIVE

RESTAURANT

OFFICE

OFFICE

MH 27 (27"Ø)
CAST. R-1733
R.E. 887.0±
I.E. 884.87

EXIST. 12" I.E. 884.87
MH27

REMOVE EXIST. F.E.S. CONSTRUCT MH 27 AROUND EXIST. LINE

EXIST. CB G.L. 887.76 I.E. 885.75

EXIST. CB G.L. 886.53 I.E. 884.5

REMOVE EXIST. F.E.S. EXTEND LINE TO MH 26

EXIST. 12" I.E. 884.14

REMOVE EXIST. F.E.S. & CONSTRUCT MH 26 AROUND EXIST. PIPE

122" RCP ARCH PIPE

SEE SHEET

CB 10

MH 23

MH 20

MH 21

MH 24

MH 25

MH 26

25'-12" RCP CL 3 @ 1.0%
CB 8

53'-12" RCP CL 3 @ 1.0%

50'-12" RCP CL 3 @ 2.42%

8" SAN SEWER

88'-12" RCP CL 3 @ 2.12%

330

335

340

CB 9 (27"Ø)
CAST. R-3250-A
G.L. 882.50
I.E. 879.50

CB 8 (24"x36")
CAST. R-3246-B
G.L. 882.60
I.E. 878.97

EXIST. 6" DIP STUB

EXIST. 8" SAN STUB

RECONSTRUCT EXISTING CB.
MH 22 (48"Ø)
CAST. R-3250-A
G.L. 884.4
12" I.E. 880.00

EXIST. 6" DIP STUB

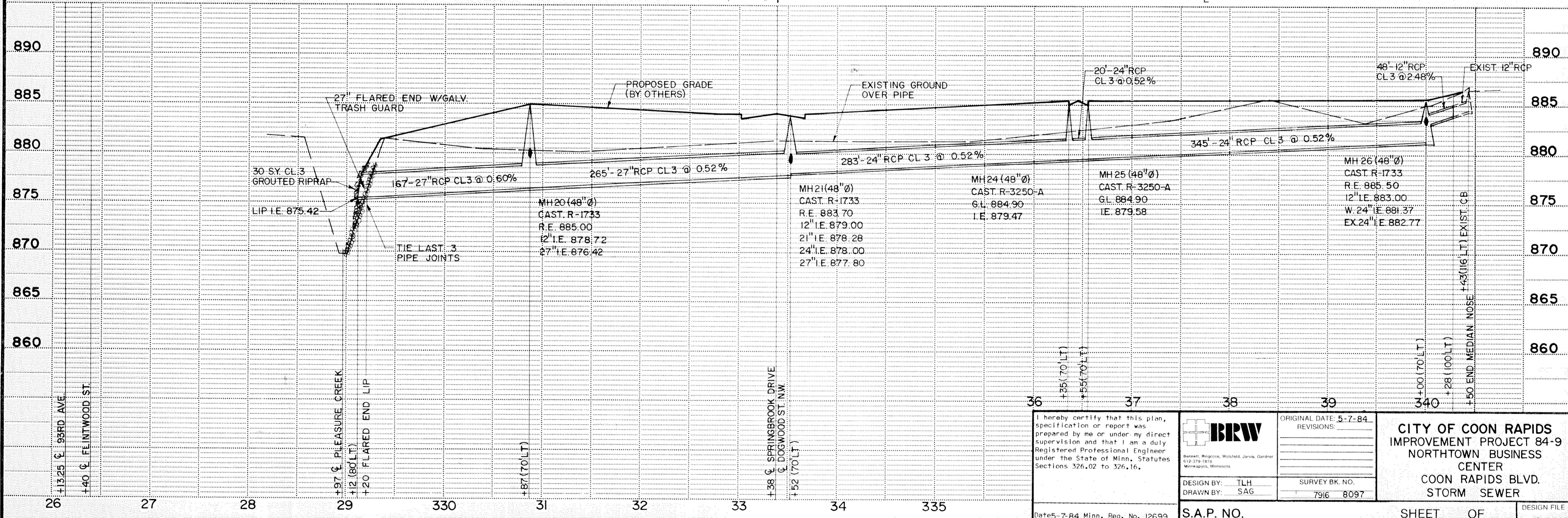
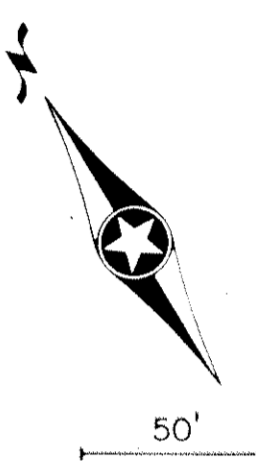
EXIST. 8" SAN STUB

NOTE: FINAL ELEVATION OF MH 20 SHALL BE COORDINATED WITH OWNER AT TIME OF CONSTRUCTION.

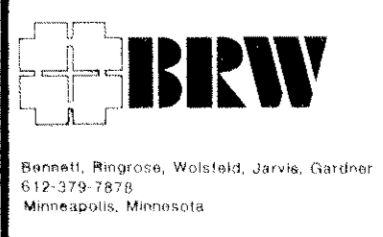
NOTE: CL ON COON RAPIDS BOULEVARD HAS BEEN IDENTIFIED AS THE MEDIAN AND MAY NOT BE PLOTTED CL

PRELIMINARY

PRINTED
MAY - 8 1984
BRW INC.



I hereby certify that this plan, specification or report was prepared by me or under my direct supervision and that I am a duly Registered Professional Engineer under the State of Minn. Statutes Sections 326.02 to 326.16.



ORIGINAL DATE: 5-7-84
REVISIONS:

SURVEY BK. NO.
7916 8097

CITY OF COON RAPIDS
IMPROVEMENT PROJECT 84-9
NORTHTOWN BUSINESS CENTER
COON RAPIDS BLVD.
STORM SEWER

DESIGN BY: TLH
DRAWN BY: SAG

S.A.P. NO.

SHEET OF DESIGN FILE No. 16-8405

Date 5-7-84 Minn. Reg. No. 12699