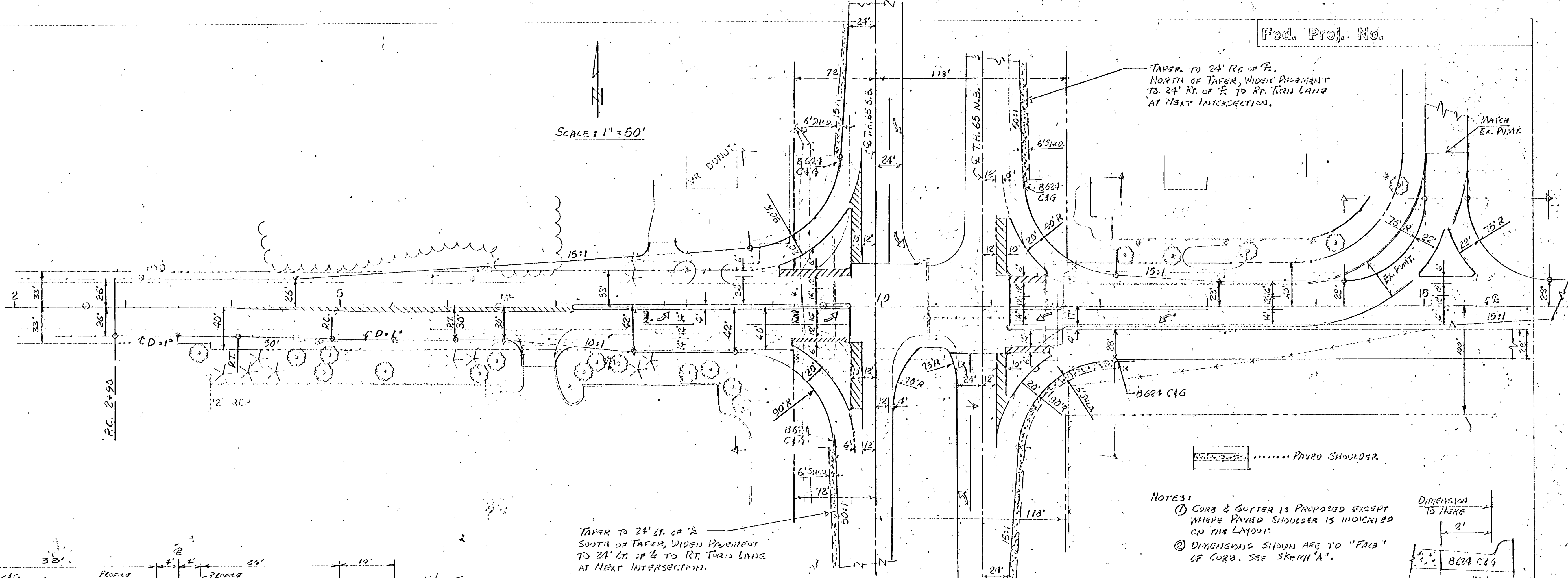


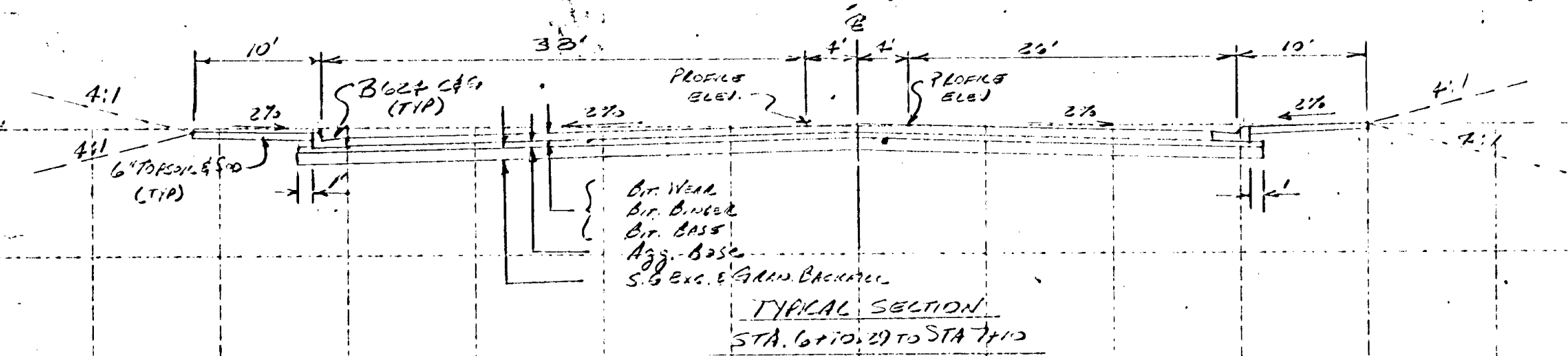
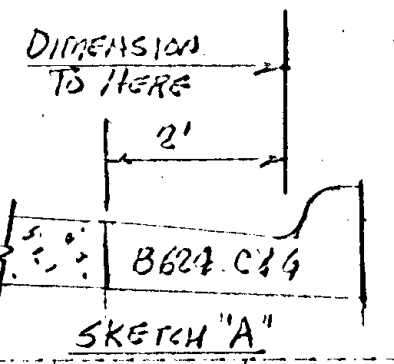
SCALE: 1" = 50'

TAPER TO 24' RT. OF P.
NORTH OF TAPE, WIDEN PAVEMENT
TO 24' RT. OF P. TO RT. TURN LANE
AT NEXT INTERSECTION.

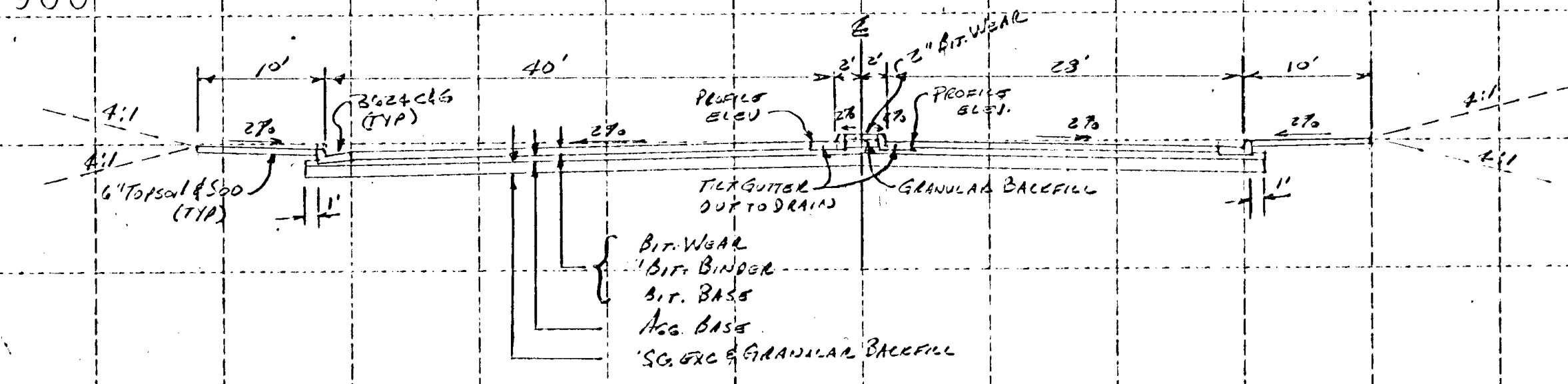
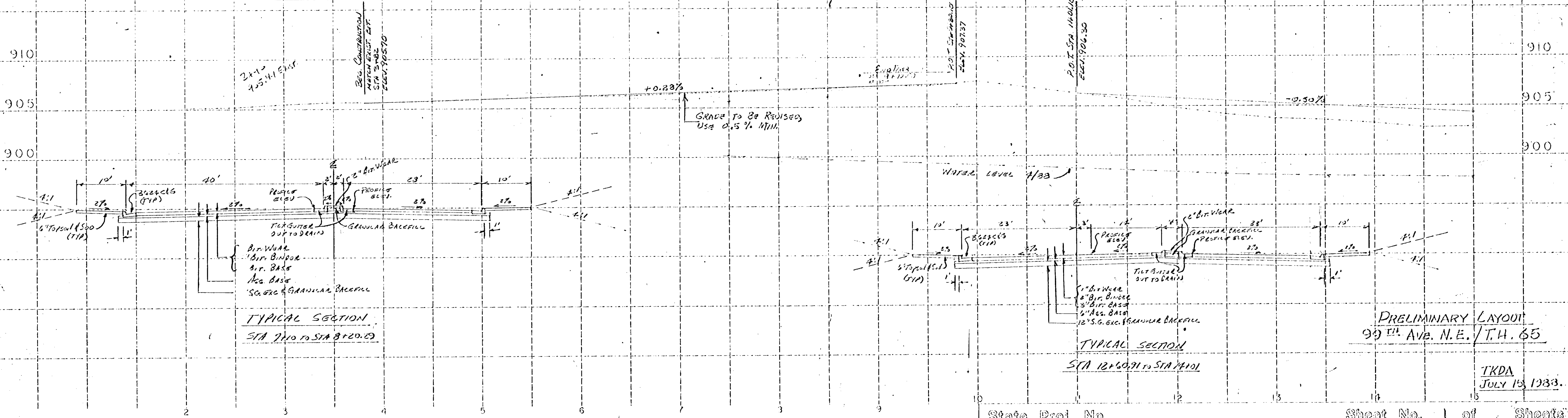


TAPER TO 24' LT. OF P.
SOUTH OF TAPE, WIDEN PAVEMENT
TO 24' LT. OF P. TO RT. TURN LANE
AT NEXT INTERSECTION.

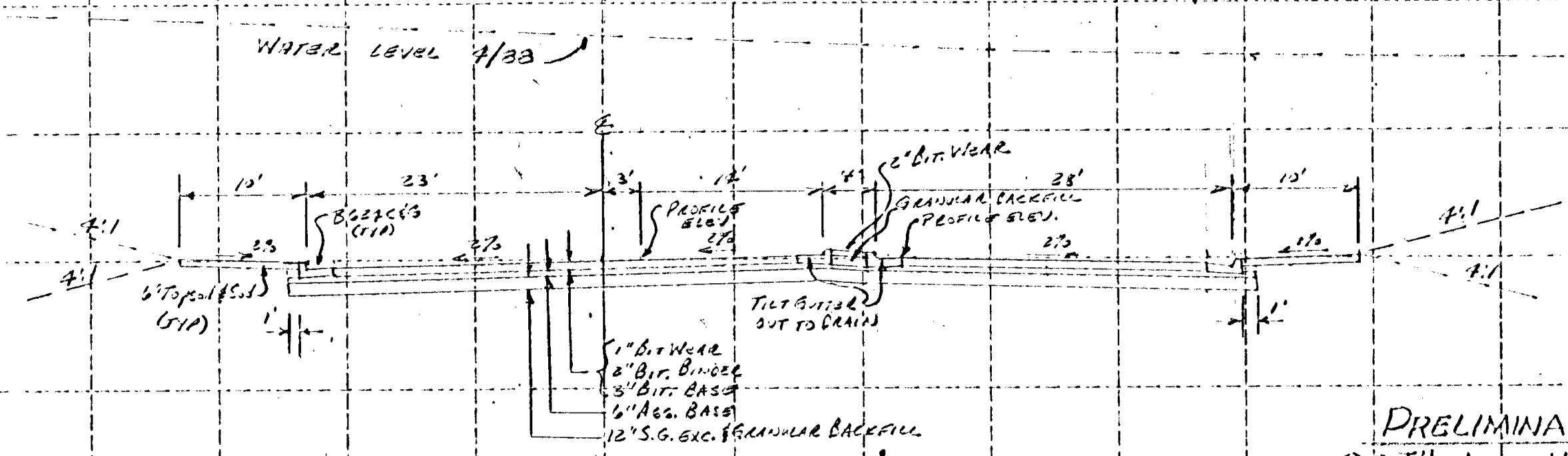
- NOTES:
- ① CURB & GUTTER IS PROPOSED EXCEPT WHERE PAVED SHOULDER IS INDICATED ON THE LAYOUT.
 - ② DIMENSIONS SHOWN ARE TO "FACE" OF CURB. SEE SKETCH "A".



TYPICAL SECTION
STA 6+10.25 TO STA 7+10



TYPICAL SECTION
STA 7+10 TO STA 8+20.25



TYPICAL SECTION
STA 12+60.91 TO STA 14+01

DRELMINARY LAYOUT
99TH AVE. N.E. / T.H. 65

TKDA
JULY 13, 1933.