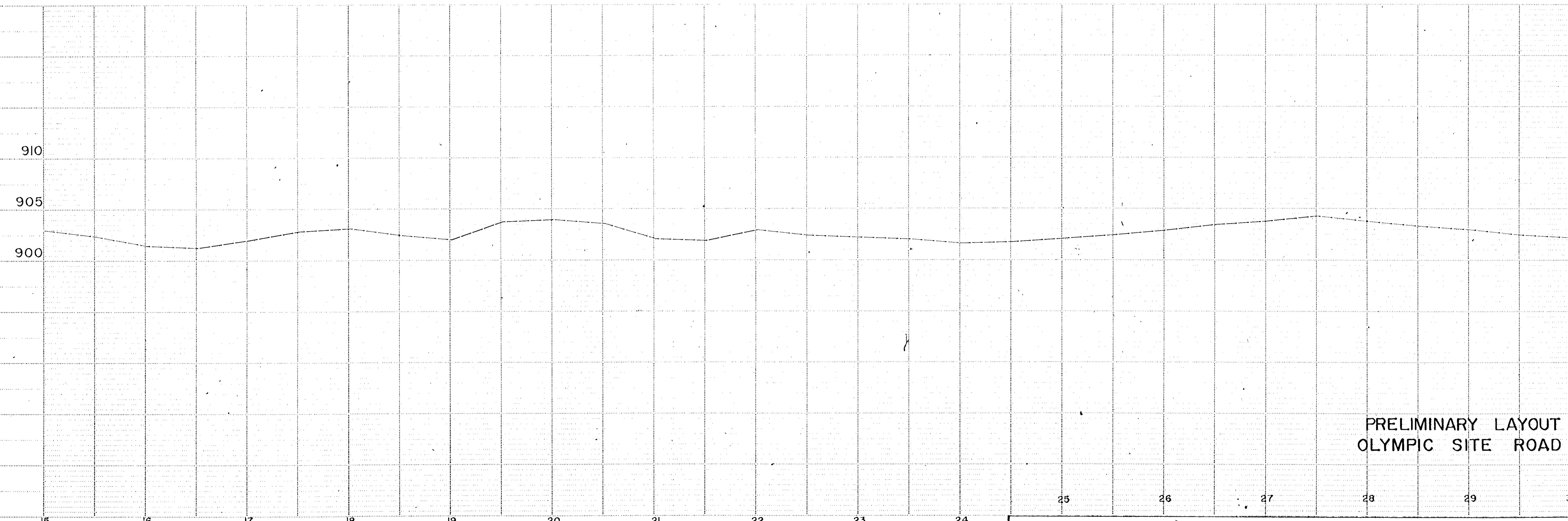
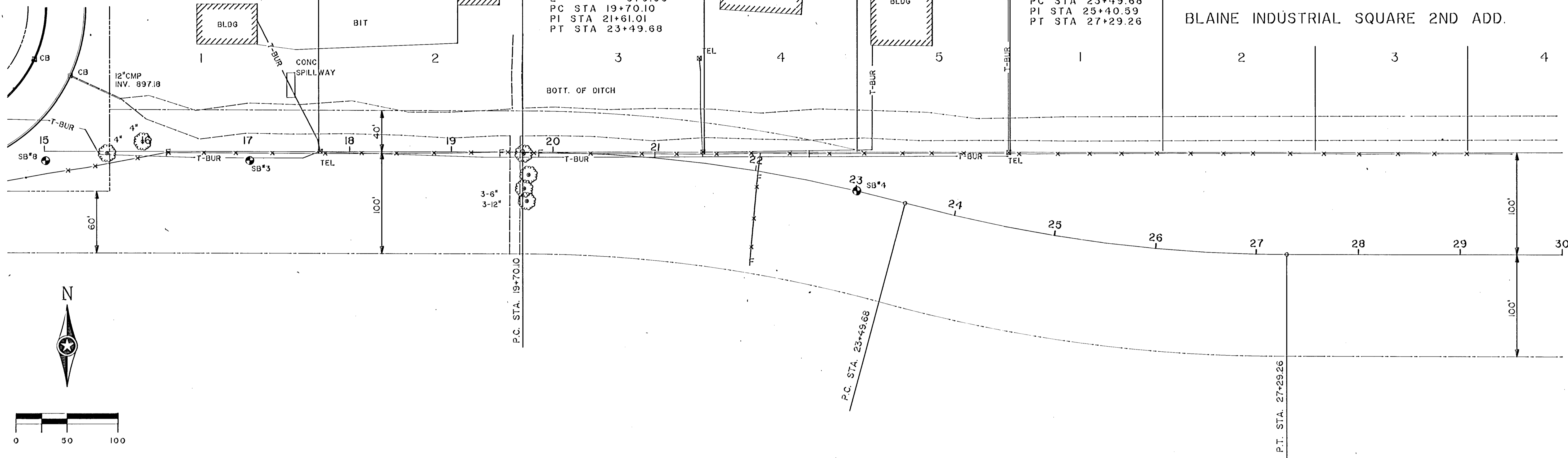


BLAINE INDUSTRIAL SQUARE

BLAINE INDUSTRIAL SQUARE 2ND ADD.

CURVE 1 - C/L SURVEY  
 $\Delta = 15^\circ 10' 59''$   
 $R = 1432.39'$   
 $T = 190.91'$   
 $L = 379.58'$   
 $PC STA 19+70.10$   
 $PI STA 21+61.01$   
 $PT STA 23+49.68$

CURVE 2  
 $\Delta = 15^\circ 10' 59''$   
 $R = 1432.39'$   
 $T = 190.91'$   
 $L = 379.58'$   
 $PC STA 23+49.68$   
 $PI STA 25+40.59$   
 $PT STA 27+29.26$



PRELIMINARY LAYOUT  
OLYMPIC SITE ROAD