

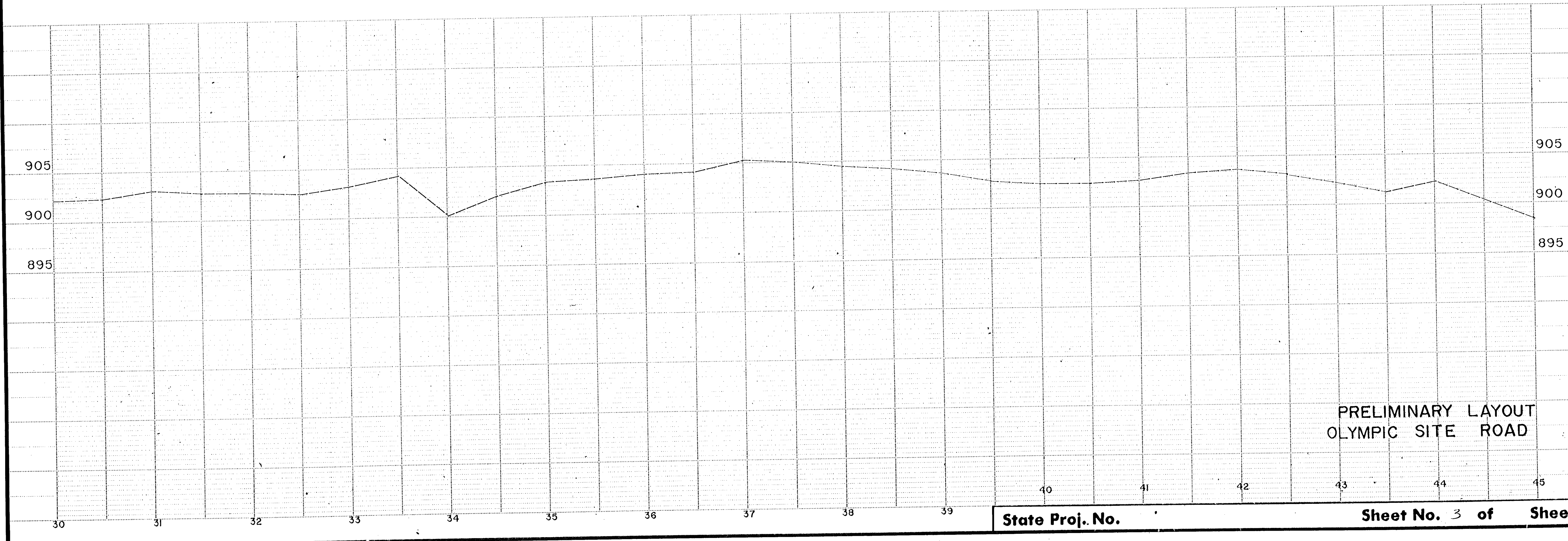
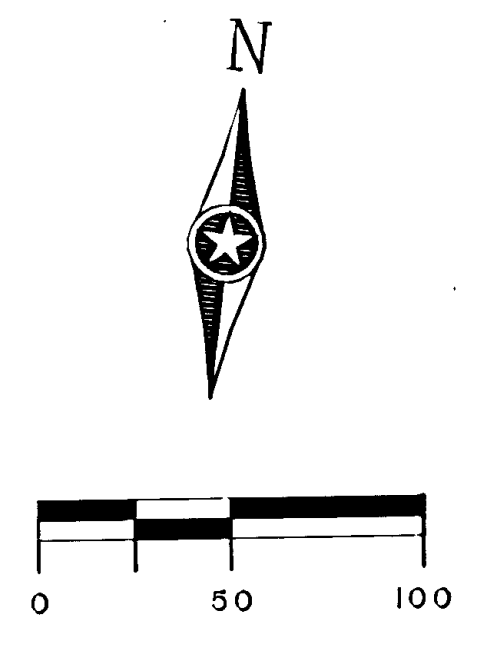
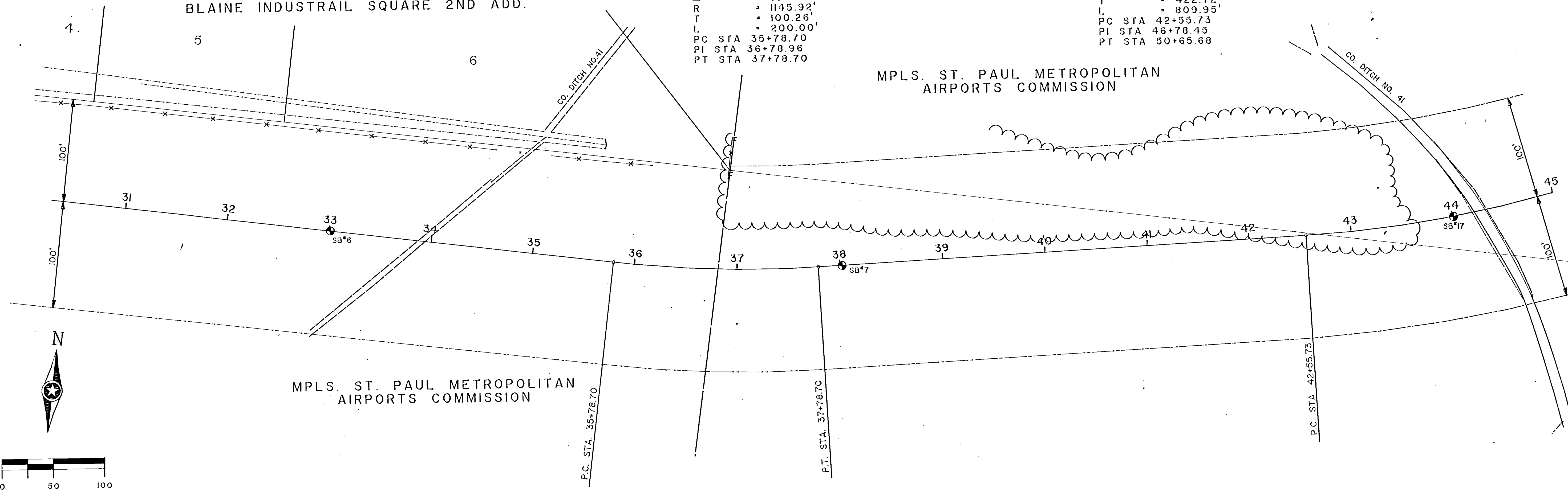
BLAINE INDUSTRIAL SQUARE 2ND ADD.

CURVE 3
 $\Delta = 10\ 00' 00''$
 $R = 1145.92'$
 $T = 100.26'$
 $L = 200.00'$
 $PC\ STA\ 35+78.70$
 $PI\ STA\ 36+78.96$
 $PT\ STA\ 37+78.70$

CURVE 4
 $\Delta = 40\ 29' 50''$
 $R = 1145.92'$
 $T = 422.72'$
 $L = 809.95'$
 $PC\ STA\ 42+55.73$
 $PI\ STA\ 46+78.45$
 $PT\ STA\ 50+65.68$

MPLS. ST. PAUL METROPOLITAN AIRPORTS COMMISSION

MPLS. ST. PAUL METROPOLITAN AIRPORTS COMMISSION



PRELIMINARY LAYOUT OLYMPIC SITE ROAD