

**ESTIMATED QUANTITIES**

SPECIFICATION NO.	ITEM	UNIT	MUNICIPAL	RURAL	TOTAL ESTIMATED QUANTITIES
2101.501	GLEARING	ACRE			0.10
2101.506	GRUBBING	ACRE			0.10
2104.501	REMOVE PORTABLE CULV.	LIN. FT.			146
2105.501	CLASS "A" EXC.	CU. YDS.			861
2202.526	GRAVEL BASE INP. (CLASS 5)	TON			2,063
2105.506	BORROW EXC. (CLASS A)	CU. YD.			860
2576.501	SODDING	SQ. YD.			305
2105.510	TOP SOIL COVER	CU. YD. (V.M.)			30
2574.501	ROADSIDE SEEDING	ACRE			0.878
2575.501	SURFACE MULCH TYPE 1 (7)	TON			1.32
2575.506	SURFACE MULCH TYPE 6 (7)	GALLON			132
2130.501	WATER	M. GALLON			31
2501.511-24	F&I 24" C.M.P. CULV.	LIN. FT.			218
2501.521-24	F&I 24" S.C.P. CULV. CLASS II	LIN. FT.			68
2515.531-24	F&I APRON 24" C.M.P. CULV.	APRON			2
2515.541-24	F&I APRON 24" S.C.P. CULV.	APRON			2
2341.501	BITUMINOUS MATERIAL FOR PRIME	GALLON			430
2341.502	BITUMINOUS MATERIAL FOR TACK	GALLON			216
2341.504	BITUMINOUS MATERIAL FOR MIXTURE	TON			41
2341.511	BITUMINOUS MIXTURE (LEVEL COURSE)	TON			118
2341.511	BITUMINOUS MIXTURE (BINDER COURSE)	TON			356
2341.511	BITUMINOUS MIXTURE (WEARING COURSE)	TON			356
2501.501	PIPE CULV. EXC.	CU. YDS.			48
2506.516	F & I CASTING ASSEMBLY	ASSEMBLY			1
565.688	F&I PRECAST CONCRETE HANDHOLE	HANDHOLE			7
565.689	F&I FIBRE CONDUIT 3" (DIAM)	LIN. FT.			96
565.690	F&I METALLIC CONDUIT (2" DIAM)	LIN. FT.			120

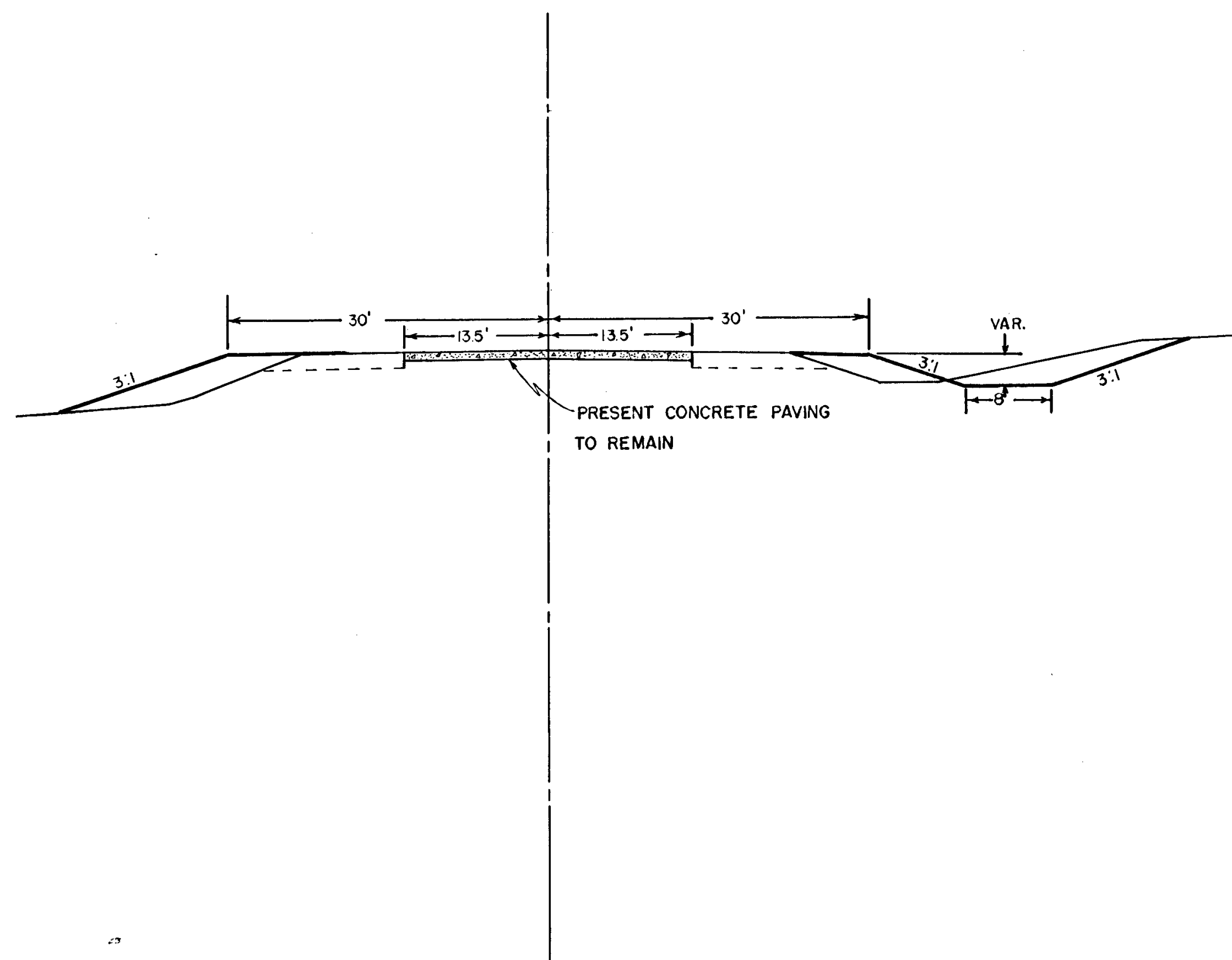
- NOTE: THE REMOVAL OF ALL OR ANY CONC. PAVEMENT WILL BE CONSIDERED INCIDENTAL TO F&I CONDUIT
- ③ IT WILL BE EXPECTED POLY VINYL CHLORIDE CONDUIT WILL BE USED IF POSSIBLE  
24" C.M.P. TO INCLUDE C.M.P. CATCH BASIN (SEE DETAILS)
  - ② SEED WILL BE FURNISHED TO CONTRACTOR  
CLASS 5 MATERIAL WILL BE FURNISHED BY THE CONTRACTOR FROM HIS SELECTED SOURCE.
  - ① TO BE PLACED ON SLOPES BEFORE SOD (3" MINIMUM)
  - ④ BORROW LT. STA. 19+55.43 OF THE PLANS S.A.P. 02-611-07

**STANDARD DETAIL PLATES**

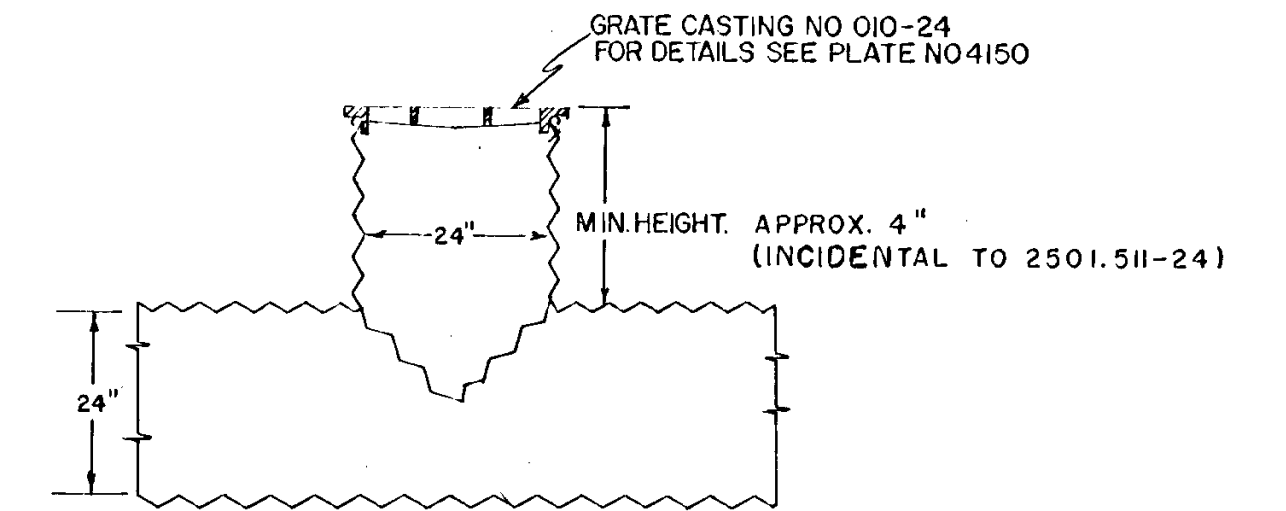
THE FOLLOWING STANDARD DETAIL PLATES, APPROVED BY THE BUREAU OF PUBLIC ROADS, SHALL APPLY ON THIS PROJECT.

PLATE NO.	DESCRIPTION
3000 B	S.C.P. CULVERTS
31 00 B	CONCRETE APRON FOR S.C.P.
31 23 B	METAL APRON FOR C.M.P.
401 2	CATCH BASIN
41 50 A	GRATE CASTING FOR CATCH BASIN
8003-8008A	STANDARD SIGNS & BARRICADES
811 7	PRECAST CONCRETE HAND HOLE

**TYPICAL GRADING SECTIONS**



**SPECIAL DETAILS**

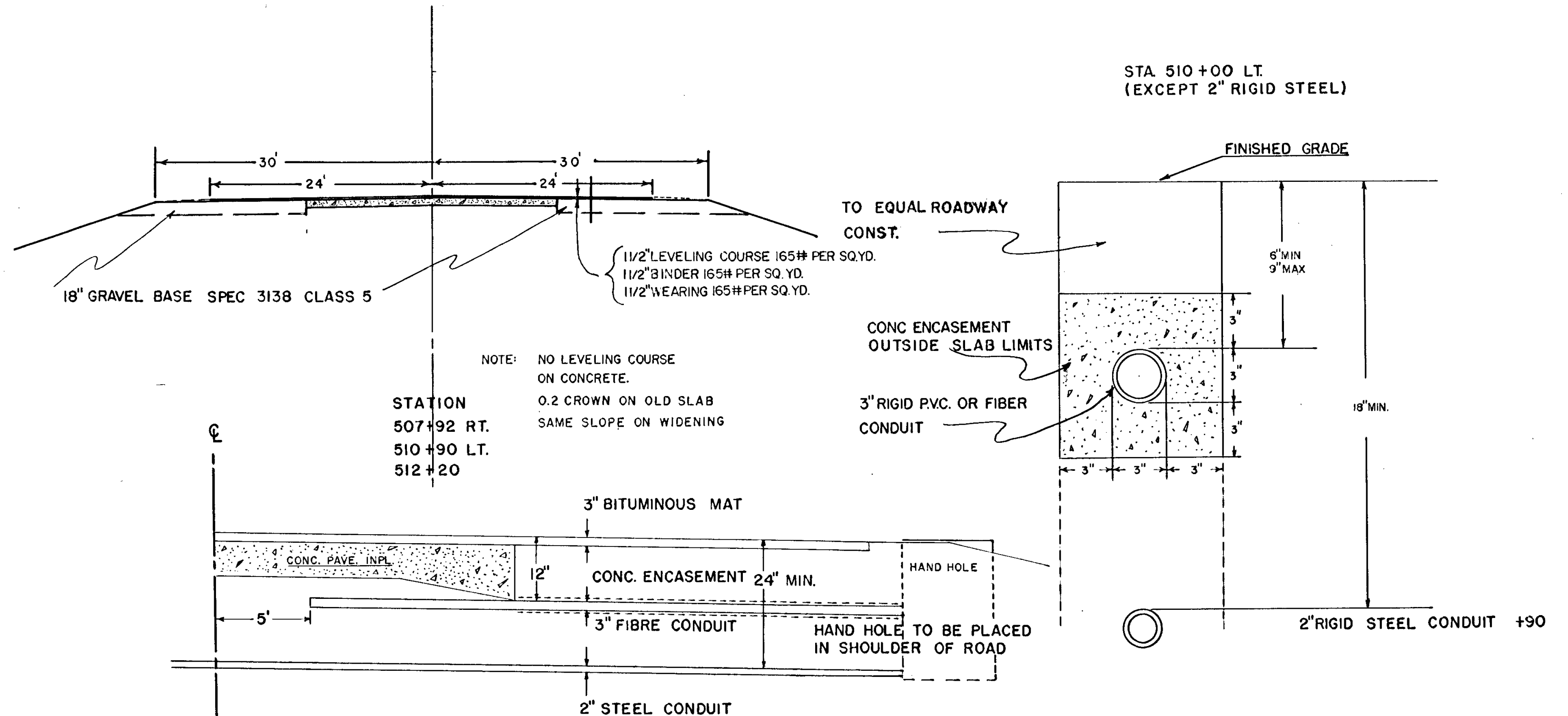


NOTE: ALL SLOPES & DIMENSIONS SHOWN ON TYPICAL SECTION ARE APPROXIMATE  
WORKING AROUND MISC. UTILITY POLES WILL BE CONSIDERED INCIDENTAL TO CLASS 'A' EXCAVATION

BASIS FOR PLANNED QUANTITIES  
WATER 15 GALS PER TON  
GRAVEL BASE 140 LBS PER CU. FT. COMPACTED

PLANT MIXED BITUMINOUS SURFACE  
BITUMINOUS MATERIAL FOR TACK COAT 0.05 GAL PER SQ. YD.  
BITUMINOUS MATERIAL FOR MIXTURE 4.5% BINDER  
BITUMINOUS MATERIAL FOR PRIME 5.5% WEARING  
0.30 GAL PER SQ. YD.

**TYPICAL BASE & SURFACE SECTIONS**



NOTE: NOT DRAWN TO SCALE.  
ALL CONDUIT TO BE BORED UNDER OLD SLAB.

STA 510+00 LT. (EXCEPT 2" RIGID STEEL)

FINISHED GRADE

TO EQUAL ROADWAY CONST.

1 1/2" LEVELING COURSE 165# PER SQ. YD.  
1 1/2" BINDER 165# PER SQ. YD.  
1 1/2" WEARING 165# PER SQ. YD.

CONC ENCASEMENT OUTSIDE SLAB LIMITS  
3" RIGID PVC. OR FIBER CONDUIT

3" BITUMINOUS MAT

12" CONC. ENCASEMENT 24" MIN.

3" FIBRE CONDUIT

2" STEEL CONDUIT

HAND HOLE  
HAND HOLE TO BE PLACED IN SHOULDER OF ROAD

18" MIN.

2" RIGID STEEL CONDUIT +90

Minn. Project No. \_\_\_\_\_

S.A.P. \_\_\_\_\_  
State Project No. 0203-51

County, Minn. Proj. No. \_\_\_\_\_ Plan No. \_\_\_\_\_ Sheet No. 2