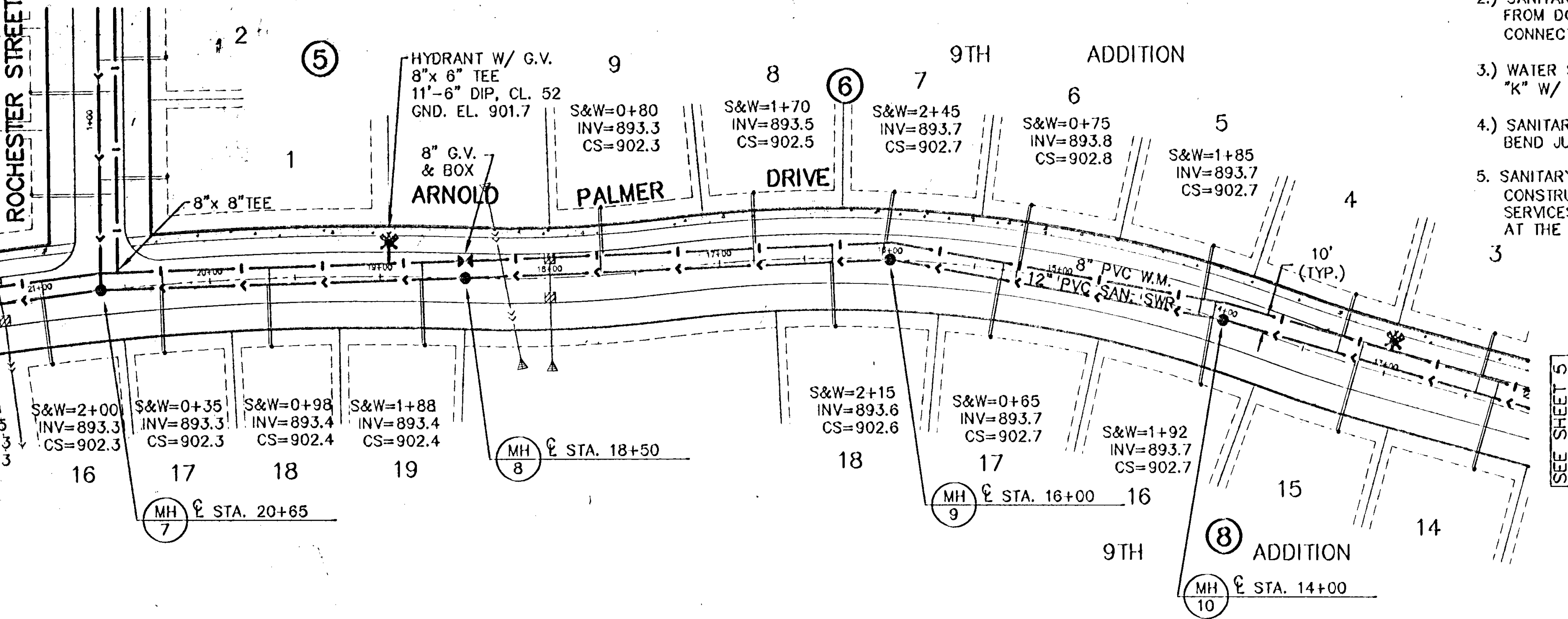


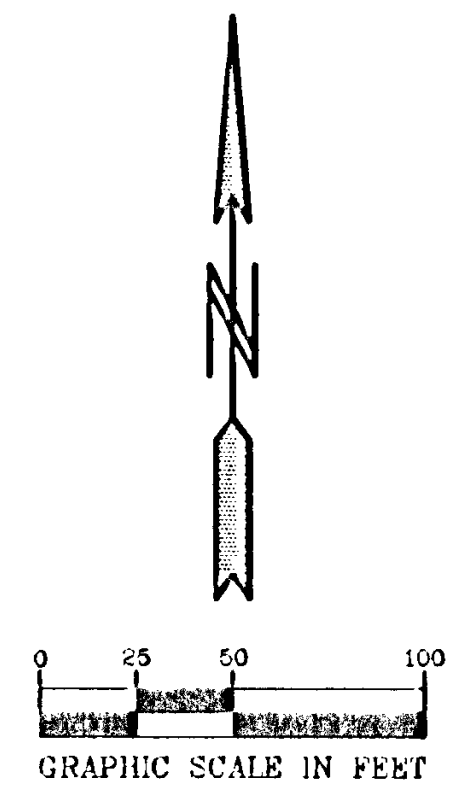
SEE SHEET 7

ROCHESTER STREET NE.



GENERAL NOTES:

- 1.) SANITARY SEWER SERVICES SHALL BE 4" PVC SDR-35
- 2.) SANITARY SEWER SERVICE WYES ARE STATIONED FROM DOWN STREAM MANHOLE, OR MAINLINE WYE CONNECTION FOR 6" LATERAL RUNS.
- 3.) WATER SERVICES SHALL BE 1" COPPER TYPE "K" W/ 7.5" MINIMUM COVER.
- 4.) SANITARY SEWER INVERTS ARE SHOWN AT THE BEND JUST BEFORE THE RISER PIPE.
- 5.) SANITARY SEWER & WATER SERVICES SHALL BE CONSTRUCTED 10' BEYOND RIGHT-OF-WAY. SERVICES ON PRIVATE STREET SHALL BE INSTALLED AT THE LOCATIONS SHOWN ON THE PLANS.

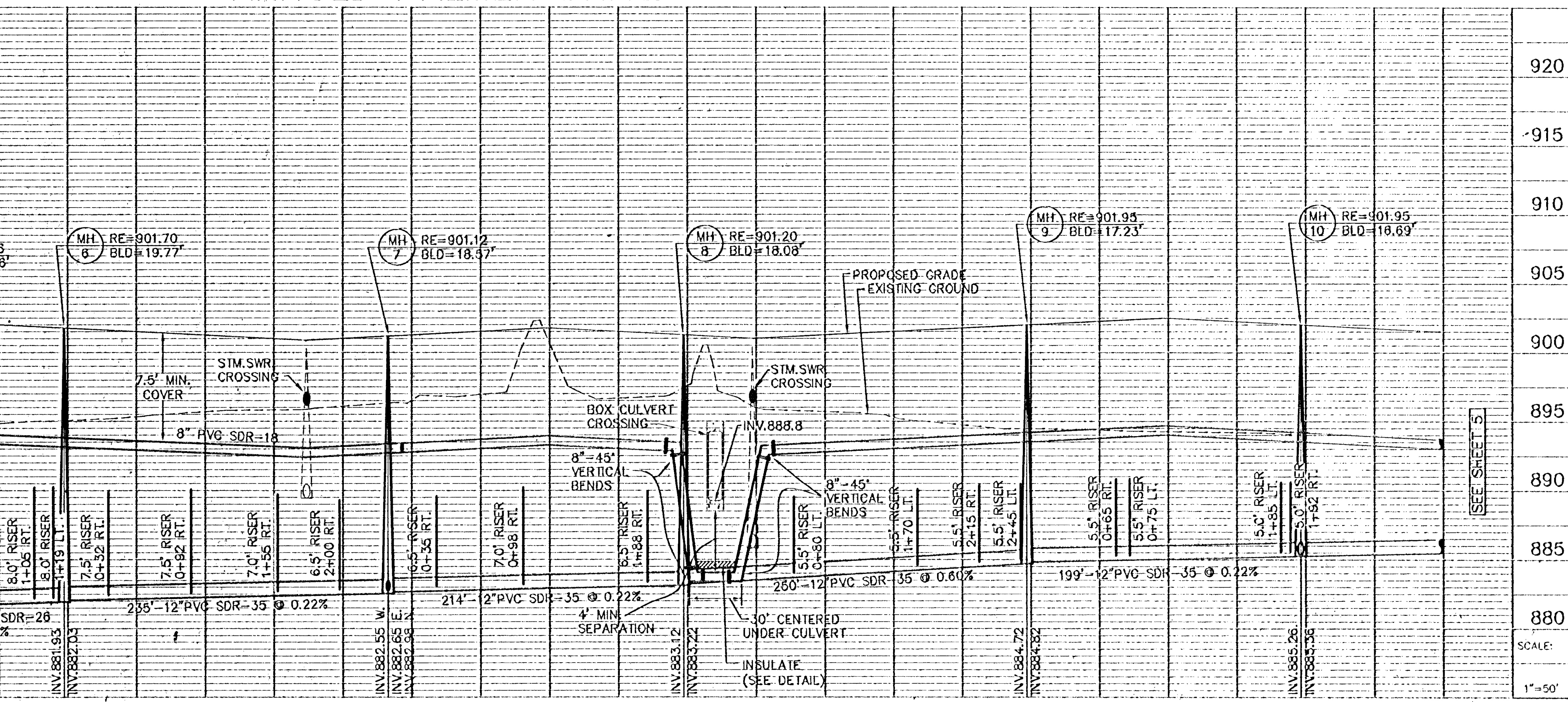


**BENCH MARKS**

T.N.H. 100' (FT.) WEST OF LONDON ST. NE. ON NORTH SIDE OF 117TH AVE. NE. ELEVATION = 902.60

T.N.H. SW. QUAD. OF 109TH AVE. NE. AND MANKATO ST. NE. ELEVATION = 900.55

ARNOLD PALMER DRIVE



SEE SHEET 5

SCALE: 1"=50'

1. Changed sheet designation numbers.  
2. Changed san sew. vertical sign. from ex.mh. to mh-6

Revisions  
1. 3/24/00  
2. 4/28/00

Date 2/10/00  
Designed BJK  
Drawn LOC

SHEET TITLE  
SANITARY SEWER AND WATERMAIN

OWNER SIENNA CORPORATION  
4340 VIKING DRIVE, SUITE 608  
MINNEAPOLIS, MINNESOTA 55435

PROJECT  
IPC 9TH ADDITION - PHASE 2

SHEET 4 OF 23