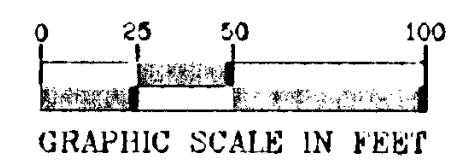


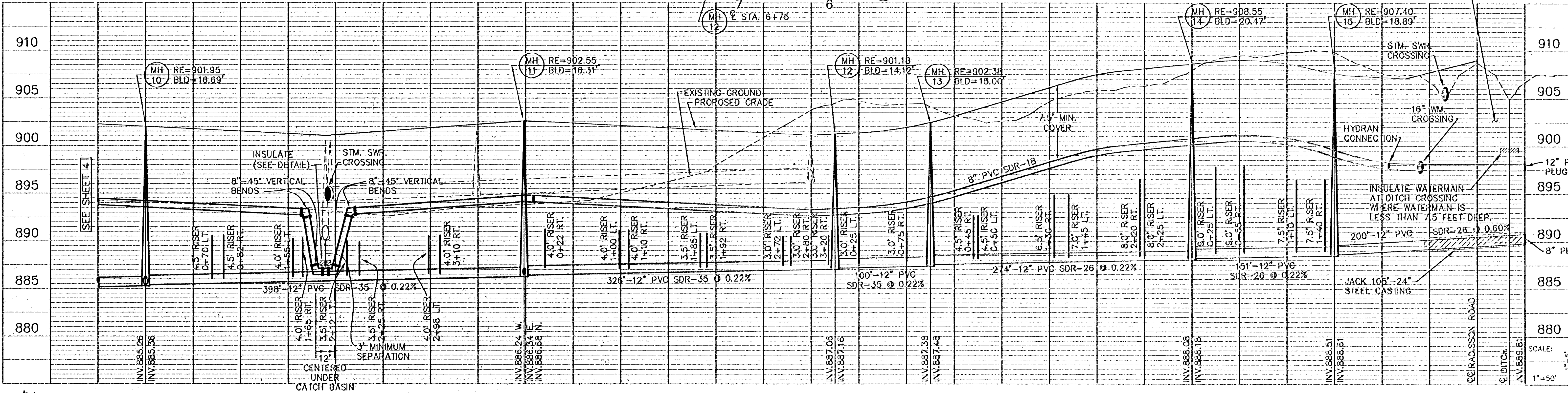
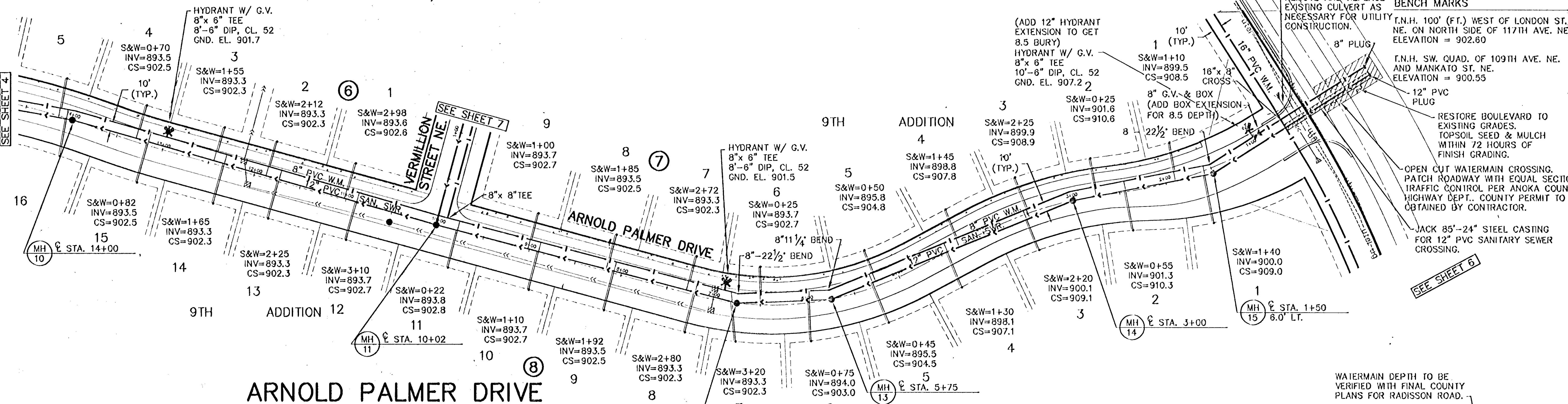
GENERAL NOTES:

- 1.) SANITARY SEWER SERVICES SHALL BE 4" PVC SDR-35.
- 2.) SANITARY SEWER SERVICE WYES ARE STATIONED FROM DOWN STREAM MANHOLE, OR MAINLINE WYE CONNECTION FOR 6" LATERAL RUNS.
- 3.) WATER SERVICES SHALL BE 1" COPPER TYPE "K" W/ 7.5' MINIMUM COVER.
- 4.) SANITARY SEWER INVERTS ARE SHOWN AT THE BEND JUST BEFORE THE RISER PIPE.
- 5.) SANITARY SEWER & WATER SERVICES SHALL BE CONSTRUCTED 10' BEYOND RIGHT-OF-WAY. SERVICES ON PRIVATE STREET SHALL BE INSTALLED AT THE LOCATIONS SHOWN ON THE PLANS.

*Check -
Amenbede Const.
(with track sewer & water)
612-333-1307
Hold for Permit*



BENCH MARKS
 T.N.H. 100' (FT.) WEST OF LONDON ST. NE. ON NORTH SIDE OF 117TH AVE. NE. ELEVATION = 902.60
 T.N.H. SW. QUAD. OF 109TH AVE. NE. AND MANKATO ST. NE. ELEVATION = 900.55
 RESTORE BOULEVARD TO EXISTING GRADES. TOPSOIL SEED & MULCH WITHIN 72 HOURS OF FINISH GRADING.
 OPEN CUT WATERMAIN CROSSING. PATCH ROADWAY WITH EQUAL SECTION. TRAFFIC CONTROL PER ANOKA COUNTY HIGHWAY DEPT.. COUNTY PERMIT TO BE OBTAINED BY CONTRACTOR.
 JACK 85'-24" STEEL CASTING FOR 12" PVC SANITARY SEWER CROSSING.



PIONEER engineering
 2425 Chicago Dr.
 Suite 100, MN 55120
 (612) 835-1100 FAX 835-1108
 2425 Chicago Dr.
 Suite 100, MN 55120
 (612) 835-1100 FAX 835-1108

I hereby certify that this plan was prepared by me or under my direct supervision and that I am a duly registered Professional Engineer under the laws of the State of Minnesota.
 Name: *Bob K. Hoff*
 Reg. No. 25083 Date: 2/10/00

Revisions:
 1. 1/15/00
 2. 3/24/00
 3. 4/28/00
 Date: 2/10/00
 Designed: BJK
 Drawn: LOC

3. Changed rim elev. on mh-19 and am. at radisson intersection
 2. Changed base elev. vertical origin from mh 11 to Radisson Rd. & sheet designation numbers.
 1. Changed MH vert. origin between mls. 54 & 55.

SHEET TITLE
SANITARY SEWER AND WATERMAIN

OWNER: **SIENNA CORPORATION**
 4940 VIKING DRIVE, SUITE 608
 MINNEAPOLIS, MINNESOTA 55435

PROJECT: **TPC 9TH ADDITION - PHASE 2**
 SHEET 5 OF 23 SHEETS

SCALE: 1"=50'