

GENERAL NOTES:

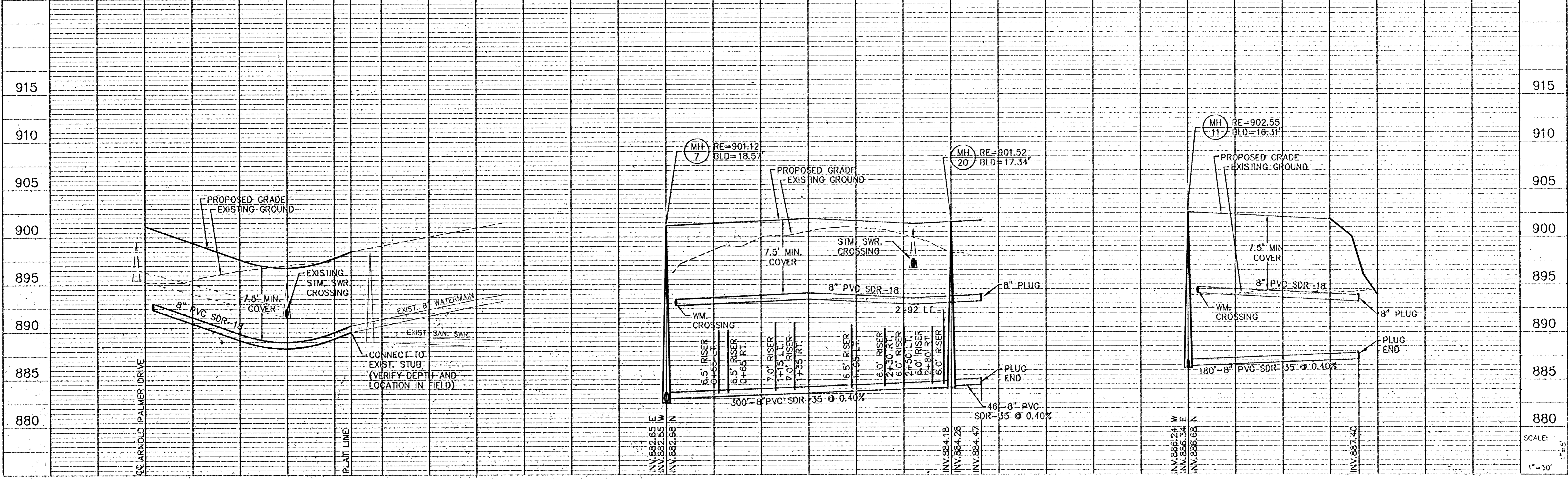
- 1.) SANITARY SEWER SERVICES SHALL BE 4" PVC SDR-35.
- 2.) SANITARY SEWER SERVICE WYES ARE STATIONED FROM DOWN STREAM MANHOLE, OR MAINLINE WYE CONNECTION FOR 6" LATERAL RUNS.
- 3.) WATER SERVICES SHALL BE 1" COPPER TYPE "K" W/ 7.5' MINIMUM COVER.
- 4.) SANITARY SEWER INVERTS ARE SHOWN AT THE BEND JUST BEFORE THE RISER PIPE.
- 5.) SANITARY SEWER & WATER SERVICES SHALL BE CONSTRUCTED 10' BEYOND RIGHT-OF-WAY. SERVICES ON PRIVATE STREET SHALL BE INSTALLED AT THE LOCATIONS SHOWN ON THE PLANS.

BENCH MARKS
 T.N.H. 100' (FT.) WEST OF LONDON ST. NE. ON NORTH SIDE OF 117TH AVE. NE. ELEVATION = 902.60
 T.N.H. SW. QUAD. OF 109TH AVE. NE. AND MANKATO ST. NE. ELEVATION = 900.55

LONDON STREET NE.

ROCHESTER STREET NE.

VERMILLION STREET NE.



PIONEER engineering
 2123 Exchange Blvd
 Minneapolis, MN 55425
 (612) 835-1884 FAX: 835-2408
 625 University Ave.
 Minneapolis, MN 55414
 (612) 835-1884 FAX: 835-1883

I hereby certify that this plan was prepared by me or under my direct supervision and that I am a duly registered Professional Engineer under the laws of the State of Minnesota.
 Name: *Brian J. Kristoflak*
 Reg. No. 25083 Date 2/10/00

Revisions:
 1. 3/13/00
 2. 3/24/00

3. Changed g.s. location at end of ROCHESTER ST. NE.
 2. Rev. sheet number
 1. Changed C.V. loc. on Rochester and Vermillion.

Date: 2/10/00
 Designed: BJK
 Drawn: LOC

SHEET TITLE: **SANITARY SEWER AND WATERMAIN**

OWNER: **SIENNA CORPORATION**
 4940 VIKING DRIVE, SUITE 608
 MINNEAPOLIS, MINNESOTA 55435

PROJECT: **TPC 9TH ADDITION - PHASE 2**

SHEET 7 OF 23 SHEETS

SCALE: 1"=50'