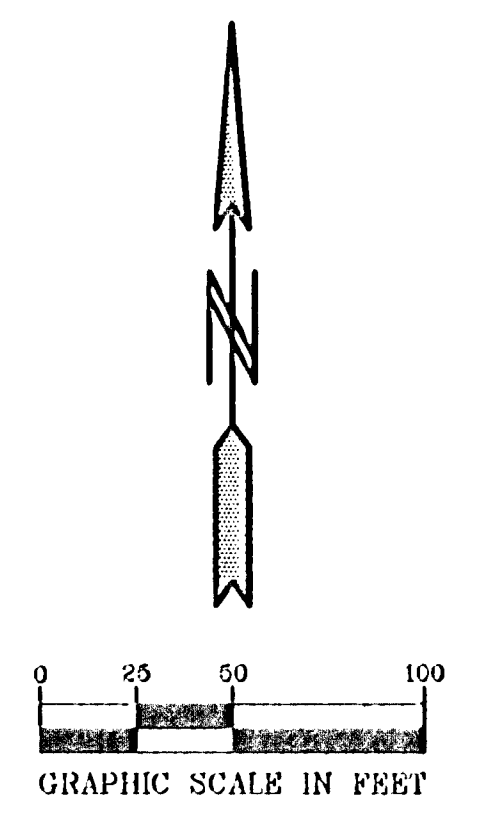


- GENERAL NOTES:**
- 1.) SANITARY SEWER SERVICES SHALL BE 4" PVC SDR-35.
 - 2.) SANITARY SEWER SERVICE WYES ARE STATIONED FROM DOWN STREAM MANHOLE, OR MAINLINE WYE CONNECTION FOR 6" LATERAL RUNS.
 - 3.) WATER SERVICES SHALL BE 1" COPPER TYPE "K" W/ 7.5' MINIMUM COVER.
 - 4.) SANITARY SEWER INVERTS ARE SHOWN AT THE BEND JUST BEFORE THE RISER PIPE.
 - 5.) SANITARY SEWER & WATER SERVICES SHALL BE CONSTRUCTED 10' BEYOND RIGHT-OF-WAY. SERVICES ON PRIVATE STREET SHALL BE INSTALLED AT THE LOCATIONS SHOWN ON THE PLANS.

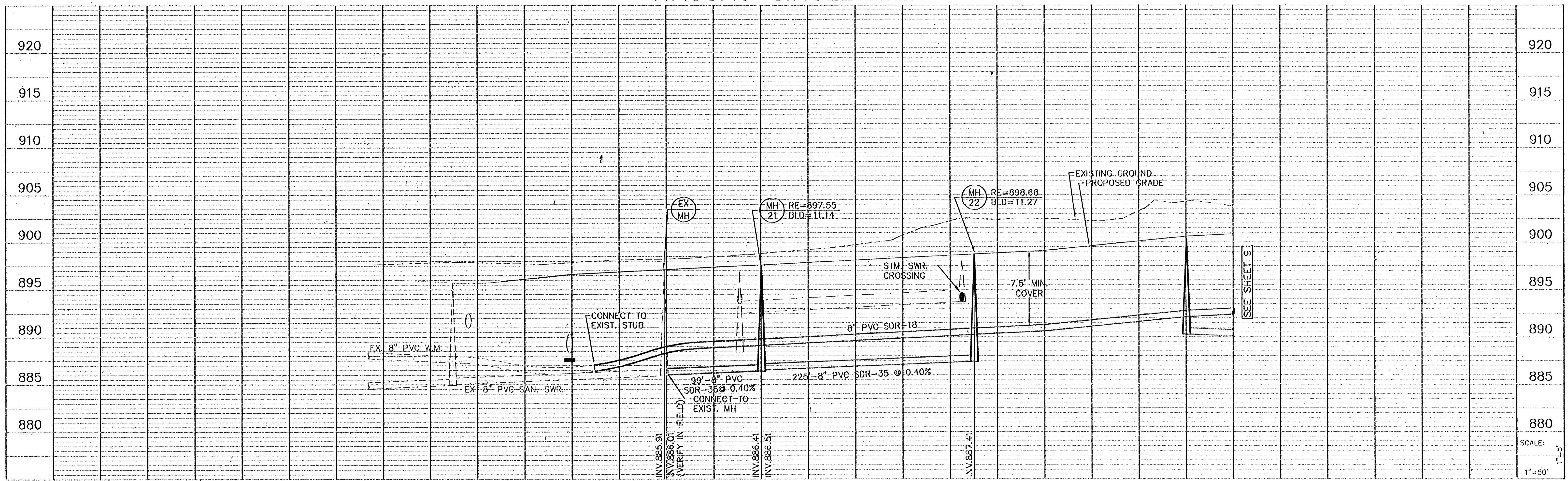


BENCH MARKS

T.N.H. 100' (FT.) WEST OF LONDON ST. NE. ON NORTH SIDE OF 117TH AVE. NE. ELEVATION = 902.60

T.N.H. SW. QUAD. OF 109TH AVE. NE. AND MANKATO ST. NE. ELEVATION = 900.55

NASSAU CIRCLE N.E.



PIONEER engineering
 5228 Enterprise Dr. Suite 200
 Minneapolis, MN 55412
 (612) 551-1234 FAX: 612-551-1208
 225 W. Lake Street
 St. Paul, MN 55102
 (612) 224-1234 FAX: 612-224-1208

I hereby certify that this plan was prepared by me or under my direct supervision and that I am a duly registered Professional Engineer under the laws of the State of Minnesota

Name: *Brian J. Kruse*
 Reg. No. 25063 Date 2/10/00

1. Rev. sheet number
 Revisions
 1. 3/24/00

Date 2/10/00
 Designed BJK
 Drawn LOC

SHEET TITLE
SANITARY SEWER AND WATERMAIN

OWNER **SIENNA CORPORATION**
 4940 VIKING DRIVE, SUITE 608
 MINNEAPOLIS, MINNESOTA 55435

PROJECT
TPC 9TH ADDITION - PHASE 2

SHEET 8 OF 23 SHEETS

SCALE:
 1" = 50'