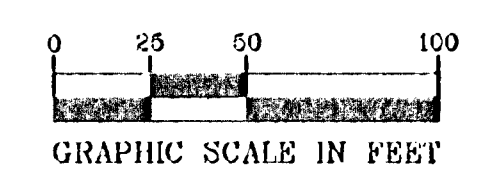
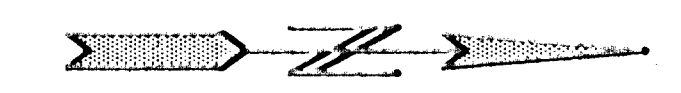
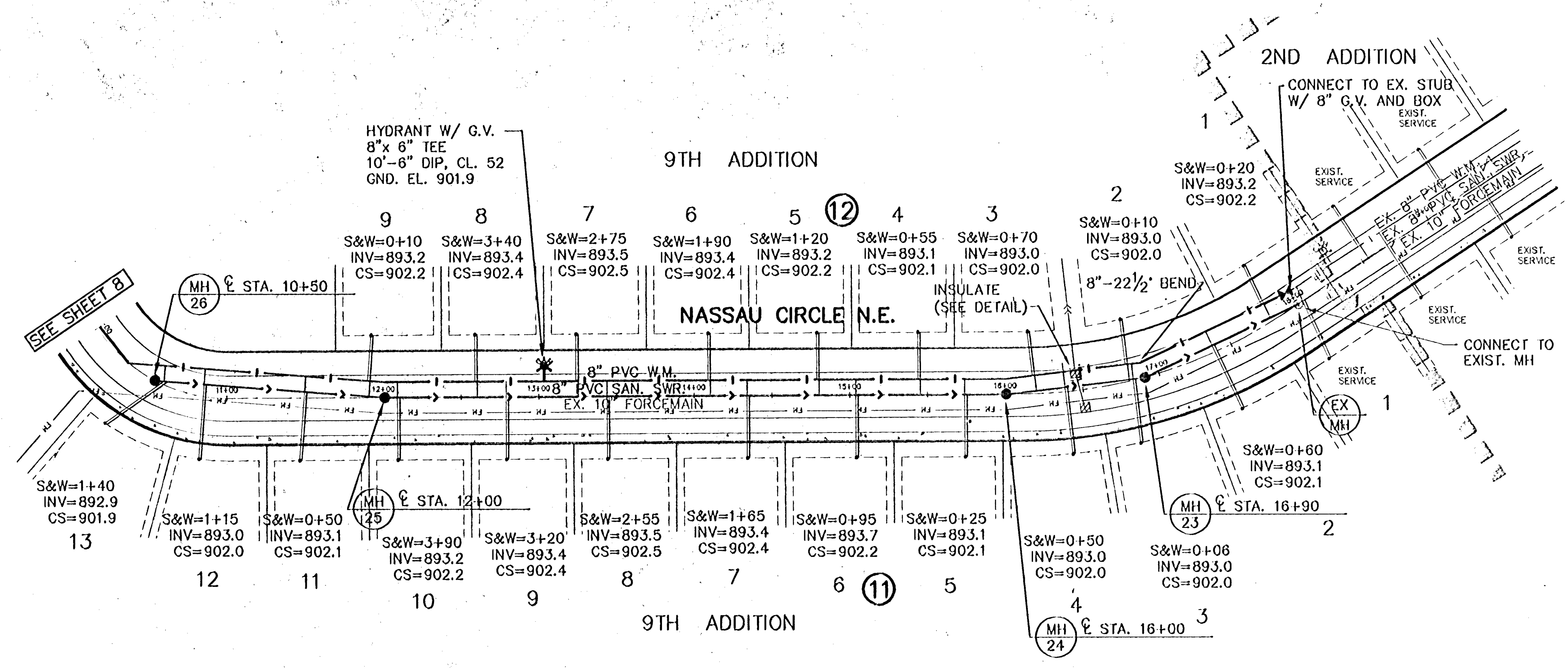


GENERAL NOTES:

- 1.) SANITARY SEWER SERVICES SHALL BE 4" PVC SDR-35.
- 2.) SANITARY SEWER SERVICE WYES ARE STATIONED FROM DOWN STREAM MANHOLE, OR MAINLINE WYE CONNECTION FOR 6" LATERAL RUNS.
- 3.) WATER SERVICES SHALL BE 1" COPPER TYPE "K" W/ 7.5' MINIMUM COVER.
- 4.) SANITARY SEWER INVERTS ARE SHOWN AT THE BEND JUST BEFORE THE RISER PIPE.
- 5.) SANITARY SEWER & WATER SERVICES SHALL BE CONSTRUCTED 10' BEYOND RIGHT-OF-WAY. SERVICES ON PRIVATE STREET SHALL BE INSTALLED AT THE LOCATIONS SHOWN ON THE PLANS.

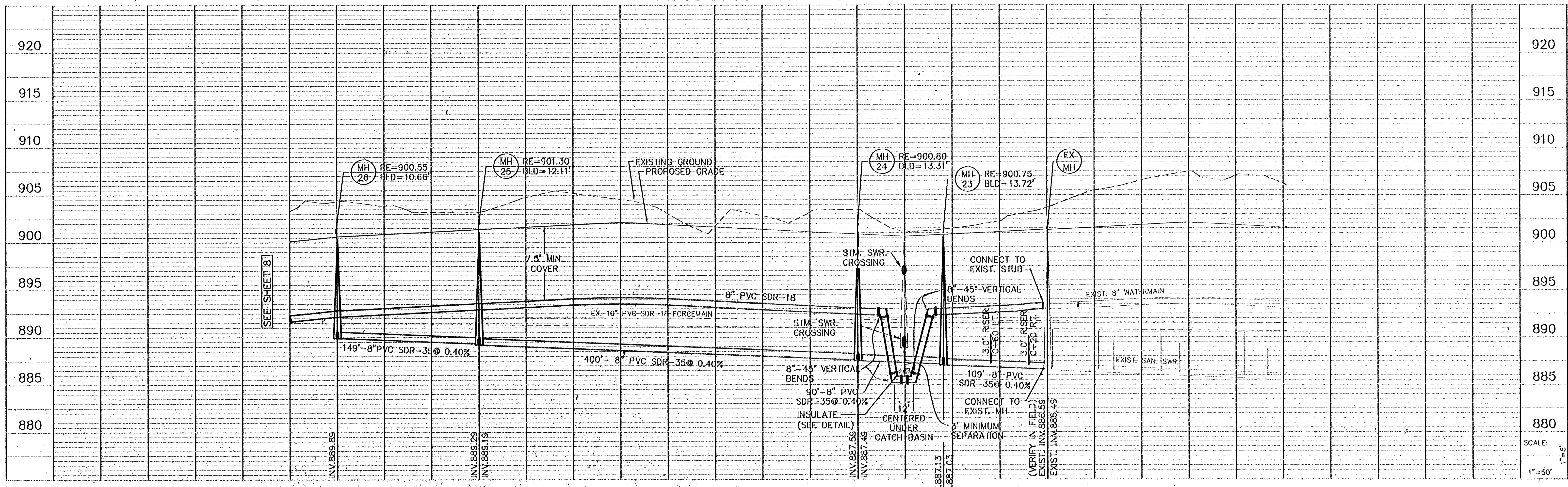


BENCH MARKS

T.N.H. 100' (FT.) WEST OF LONDON ST. NE. ON NORTH SIDE OF 117TH AVE. NE. ELEVATION = 902.60

T.N.H. SW. QUAD. OF 109TH AVE. NE. AND MANKATO ST. NE. ELEVATION = 900.55

NASSAU CIRCLE N.E.



PIONEER engineering
 2228 E. Hennepin Ave. Suite 200
 Minneapolis, MN 55425
 (612) 833-1111 FAX (612) 833-1108
 2228 Hennepin Ave. Suite 200
 Minneapolis, MN 55425
 (612) 833-1111 FAX (612) 833-1108

I hereby certify that this plan was prepared by me or under my direct supervision and that I am a duly registered Professional Engineer under the laws of the State of Minnesota.

Name: *Brian J. Krystofek*
 Reg. No. 25083 Date: 2/10/00

Revisions:
 1. 2/10/00
 2. 3/14/00

Date: 2/10/00
 Designated: BJK
 Drawn: LOC
 SHEET TITLE: **SANITARY SEWER AND WATERMAIN**

OWNER: **SIENNA CORPORATION**
 4940 VIKING DRIVE, SUITE 808
 MINNEAPOLIS, MINNESOTA 55435

PROJECT: **TPC 9TH ADDITION - PHASE 2**
 SHEET 9 OF 23 SHEETS

SCALE: 1"=50'