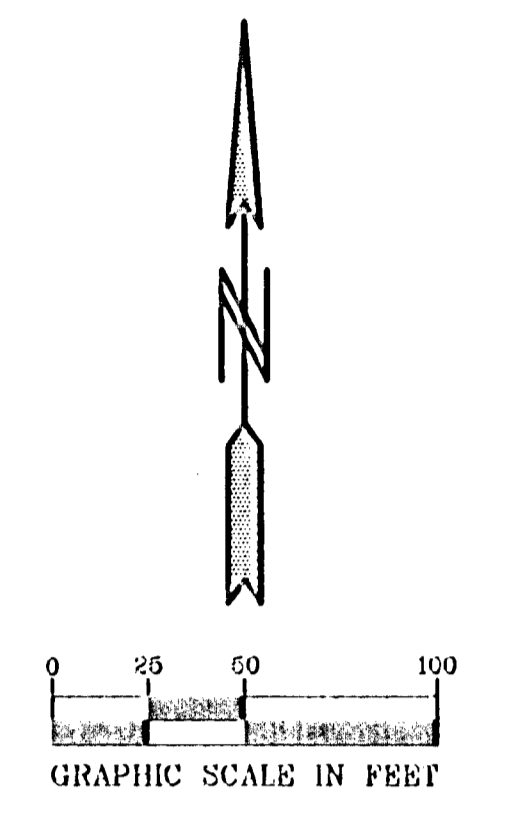
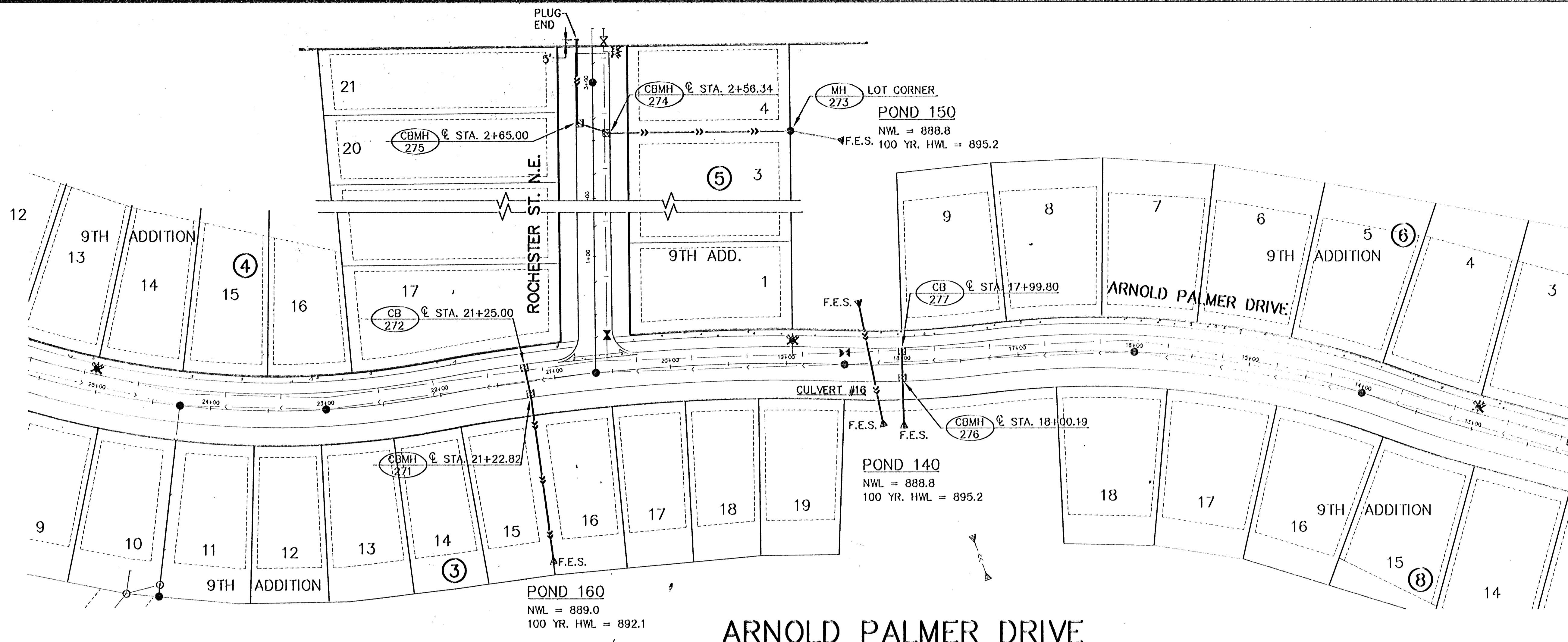
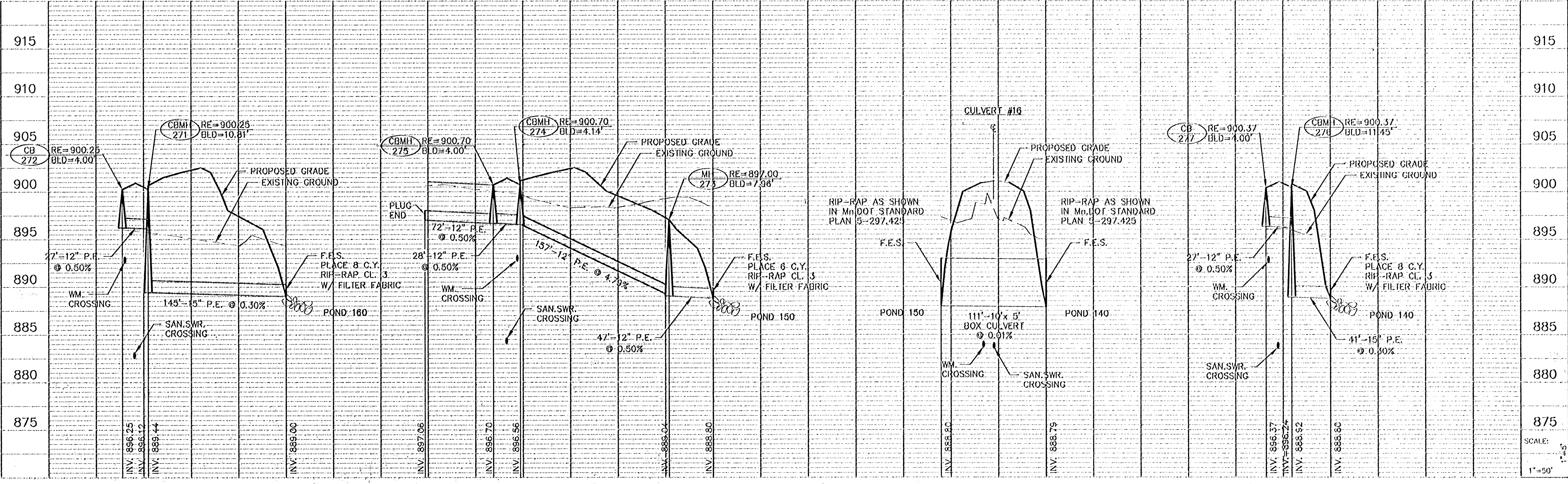


NOTE: 1.) ALL FLARED END SECTIONS ON P.E. PIPE SHALL BE METAL.
 2.) INSTALL 11.0 S.Y. OF SOD AROUND ALL YARD CATCH BASINS (SEE DETAIL).



BENCH MARKS
 T.N.H. 100' (FT.) WEST OF LONDON ST. NE. ON NORTH SIDE OF 117TH AVE. NE. ELEVATION = 902.60
 T.N.H. SW. QUAD. OF 109TH AVE. NE. AND MANKATO ST. NE. ELEVATION = 900.55

ARNOLD PALMER DRIVE



PIONEER engineering
 2428 Elmwood Dr. N.E.
 Minneapolis, MN 55412
 (612) 831-7114 FAX 612-831-2488
 855-377-7311
 (612) 735-1588 FAX 612-735-1583

I hereby certify that this plan was prepared by me or under my direct supervision and that I am a duly registered Professional Engineer under the laws of the State of Minnesota.

Name: Brian A. Kryzwicki
 Reg. No. 25083 Date 2/10/00

Revisions
 1. 3/24/00
 2. 4/28/00

Date 2/10/00
 Designed: BJK
 Drawn: JEH

SHEET TITLE
STORM SEWER

OWNER: **SIENNA CORPORATION**
 4340 VIKING DRIVE, SUITE 808
 MINNEAPOLIS, MINNESOTA 55435

PROJECT
TPC 9TH ADDITION - PHASE 2

SHEET 11 OF 23 SHEETS

17420321.dwg