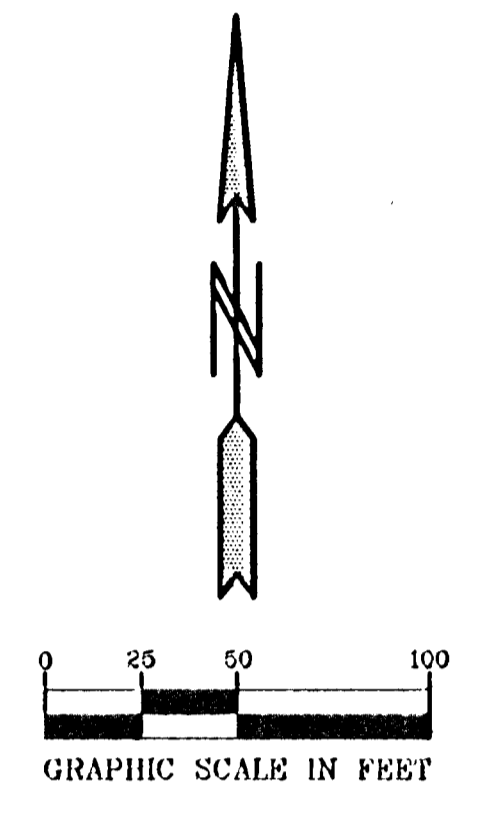


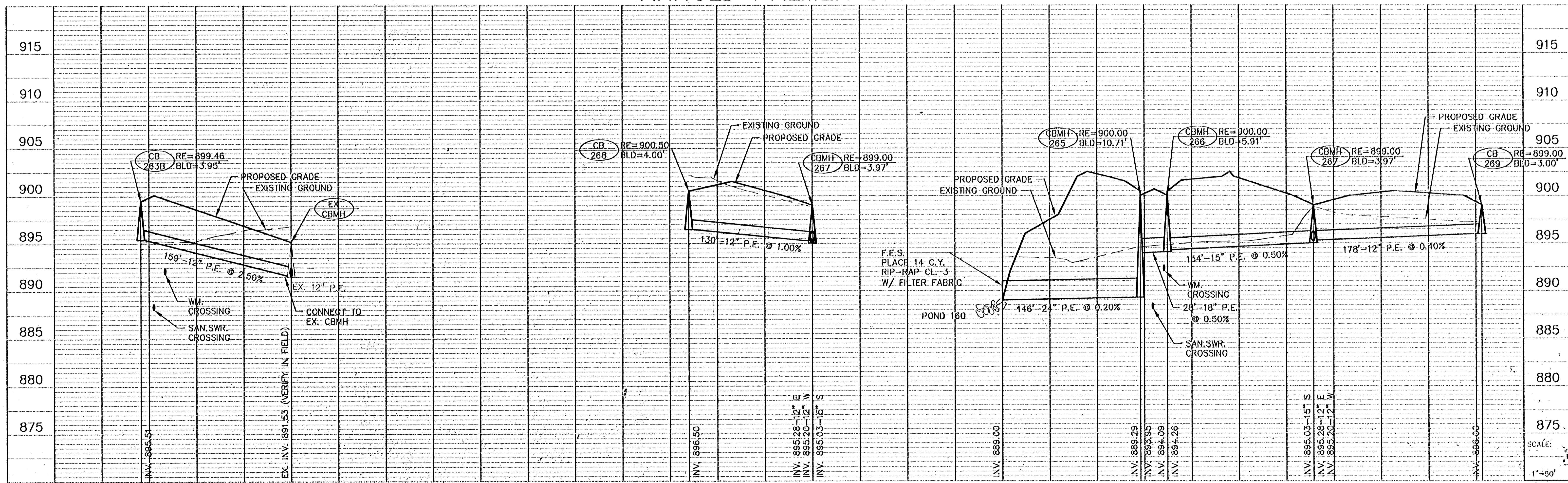
NOTE: 1.) ALL FLARED END SECTIONS ON P.E. PIPE SHALL BE METAL.
 2.) INSTALL 11.0 S.Y. OF SOD AROUND ALL YARD CATCH BASINS (SEE DETAIL).

POND 160
 NWL = 889.0
 100 YR. HWL = 892.1



BENCH MARKS
 T.N.H. 100' (FT.) WEST OF LONDON ST. NE. ON NORTH SIDE OF 117TH AVE. NE. ELEVATION = 902.60
 T.N.H. SW. QUAD. OF 109TH AVE. NE. AND MANKATO ST. NE. ELEVATION = 900.55

ARNOLD PALMER DRIVE



PIONEER engineering
 3223 Enterprise Blvd
 Minneapolis, MN 55412
 (612) 551-1111 FAX 612-551-1108
 15300 Lyndale Ave. S.
 Minneapolis, MN 55425
 (612) 785-1888 FAX 785-1885

I hereby certify that this plan was prepared by me or under my direct supervision and that I am a duly registered Professional Engineer under the laws of the State of Minnesota.

Name: *BRAN KRISTOFER*
 Reg. No. 25083 Date 2/10/00

Revisions
 1. 2/24/00

Date 2/10/00
 Designed BJK
 Drawn JEH

SHEET TITLE

STORM SEWER

OWNER SIENNA CORPORATION
 4940 VIKING DRIVE, SUITE 608
 MINNEAPOLIS, MINNESOTA 55435

PROJECT TPC 9TH ADDITION - PHASE 2

SHEET 12 OF 23 SHEETS