

STATEMENT OF ESTIMATED QUANTITIES

ITEM NO.	ITEM	UNIT	TOTAL ESTIMATED QUANTITIES	TOTAL FINAL QUANTITIES
2021.501	MOBILIZATION	LUMP SUM	1	
2031.501	FIELD OFFICE, TYPE D	EACH	1	
2101.501	CLEARING	ACRE	0.25	
2101.507	CLEARING	TREE	4	
2101.506	GRUBBING	ACRE	0.25	
2101.507	GRUBBING	TREE	4	
2104.501	REMOVE CULVERT PIPE	LIN. FT.	158	
2104.505	REMOVE BITUMINOUS PAVEMENT	SQ. YD.	11,180 (P)	
2104.521	SALVAGE CULVERT PIPE	LIN. FT.	60	
2104.521	SALVAGE FENCE	LIN. FT.	1,802	
0557.604	INSTALL FENCE	LIN. FT.	1,761	
2105.501	COMMON EXCAVATION	CU. YD.	6,972	
2105.525	TOPSOIL BORROW (LV)	CU. YD.	1,240	
2105.523	COMMON BORROW (E.V.)	CU. YD.	325	
2130.501	WATER	M. GAL.	75	
2211.503	AGGREGATE BASE PLACED, CLASS 5A	CU. YD.	3,250	
2331.504	BITUMINOUS MATERIAL FOR MIXTURE	TON	246	
2331.510	BINDER COURSE MIXTURE	TON	2,165	
2331.514	BASE COURSE MIXTURE	TON	3,305	
2331.531	TEMPORARY LANE MARKING	ROAD STA.	302	
2341.504	BITUMINOUS MATERIAL FOR MIXTURE	TON	104	
2341.508	WEARING COURSE MIXTURE	TON	1,725	
2357.502	BITUMINOUS MATERIAL FOR TACK COAT	GAL.	1,985	
2501.511	15" C.H. PIPE CULVERT	LIN. FT.	320	
2501.511	18" C.H. PIPE CULVERT	LIN. FT.	74	
2501.515	15" C.H. PIPE APRONS	EACH	6	
2501.515	18" C.H. PIPE APRONS	EACH	2	
2501.521	22" SPAN R.C. PIPE-ARCH CULVERT CL-3A	LIN. FT.	58	
2501.525	22" SPAN R.C. PIPE-ARCH APRONS	EACH	2	
2575.501	CONCRETE MEDIAN	SQ. YD.	621	
2575.501	ROADSIDE SEEDING	ACRE	3.7	
2575.502	SEED MIXTURE NO. 5	POUND	185	
2575.505	SODDING	SQ. YD.	2,535	
2575.511	MULCH MATERIAL, TYPE 1	TON	7.4	
2575.519	DISC ANCHORING	ACRE	3.7	
2575.531	COMMON FERTILIZER, ANALYSIS 10-10-10	TON	1.05	
0575.602	HAY OR STRAW BALS	EACH	24	

- ① PROVIDED FOR DUST CONTROL AS DIRECTED BY THE ENGINEER.
- ② INCLUDES 85 TON FOR ENTRANCES AND 85 TON FOR ROAD APPROACHES.
- ③ INCLUDES 60 TON FOR ROAD APPROACHES.
- ④ INCLUDES 90 TON FOR ROAD APPROACHES.
- ⑤ INCLUDES 50 TON FOR ROAD APPROACHES AND 125 TON FOR ENTRANCES.
- ⑥ FOR USE AS DIRECTED BY THE ENGINEER FOR EROSION CONTROL.

BASIS OF PLANNED QUANTITIES

- 2331 PLANT MIXED BASE AND BINDER COURSE
BITUMINOUS MIXTURE 110 LBS./SQ. YD. PER 1" THICKNESS
BITUMINOUS MATERIAL FOR MIXTURE 4.5% BY WEIGHT
- 2341 PLANT MIXED WEARING COURSE
BITUMINOUS MIXTURE 110 LBS./SQ. YD. PER 1" THICKNESS
BITUMINOUS MATERIAL FOR MIXTURE 6% BY WEIGHT
- 2575 MULCH MATERIAL, TYPE - 1
2 TONS/ACRE
- 2575 SEED MIXTURE NO. 5
50 LBS./ACRE
- 2575 COMMERCIAL FERTILIZER, ANALYSIS 10-10-10
500 LBS./ACRE ON ALL SEED AND SOD AREAS
- 2575 ROADSIDE SEEDING BASED ON HORIZONTAL MEASUREMENT PLUS 10%

SPECIAL DETAILS

THE CONTRACTOR SHALL REMOVE TOPSOIL MATERIAL WITHIN THE EXCAVATION AREAS AND AREAS ON WHICH EMBANKMENT WILL BE PLACED, STOCKPILE IF NECESSARY, AND USE IT AS TOPSOIL COVERING ON THE NEW SLOPES AND DITCH BOTTOMS. THIS MATERIAL, ALONG WITH 1,240 CUBIC YARDS OF TOPSOIL BORROW MATERIAL, WILL BE USED TO PROVIDE A MINIMUM COVER OF 3". THIS WORK SHALL BE CONSIDERED AS INCIDENTAL TO COMMON EXCAVATION.
TOPSOIL BORROW SHALL BE USED FOR FRONT YARD AREAS TO BE SODDED.

SODDING

STATION	LOC.	S Y
18+68 TO 19+32	LT.	192
20+95 TO 22+80	RT.	420
31+00 TO 32+00	LT.	204
33+00 TO 36+00	RT.	765
38+50 TO 42+50	LT.	893
CULVERT APRONS		111
TOTAL		2585

CLEARING AND GRUBBING

STATION (TO STATION)	LOC.	CLEARING		GRUBBING	
		TREE	ACRE	TREE	ACRE
19+28	44' LT.	1		1	
26+18	58' LT.	1		1	
26+52	52' LT.	1		1	
30+54	46' LT.	1		1	
32+44 TO 35+78	50'-73' LT.		0.25		0.25
TOTALS		4	0.25	4	0.25

DRAINAGE

STATION	LOCATION	IN PLACE	REMARKS	REMOVE		PORTABLE CULVERTS								
				PORT. CULV. LIN.FT.	CONC. STRUCT. CU.YD.	24" CULV. PIPE LIN.FT.	30" DING SQ.YD.	RIP-RAP CU.YD.	18" CMP LIN.FT.	18" CMP LIN.FT.	22" SPAN RCP-A LIN.FT.			
15+13	LT.	-												
19+65	LT.	-					17			36	2			
20+86	RT.	-	NO CULV. REQ.											
20+89	LT.	-	NO CULV. REQ.											
29+95 TO 32+05	LT.	-					17			210	2			
32+63	RT.	-	NO CULV. REQ.											
35+78	RT.	12" x 26" C.H.P.	NO CULV. REQ.	26										
37+50	X-CULV.	-					31						51 2	
33+63	LT.	15" x 30" C.H.P.	NO CULV. REQ.				30							
39+55	RT.	12" x 30" C.H.P.	RADISON ROAD	80			23					74	2	
40+32	LT.	15" x 30" C.H.P.	NO CULV. REQ.	30										
40+96	LT.	18" x 22" C.H.P.	NO CULV. REQ.	22										
41+79	LT.	15" x 30" C.H.P.	NO CULV. REQ.				30							
43+67	LT.		RADISON ROAD				23			74	2			
TOTALS				158		60	111			320	6	74	2	58

SALVAGE & INSTALL FENCE

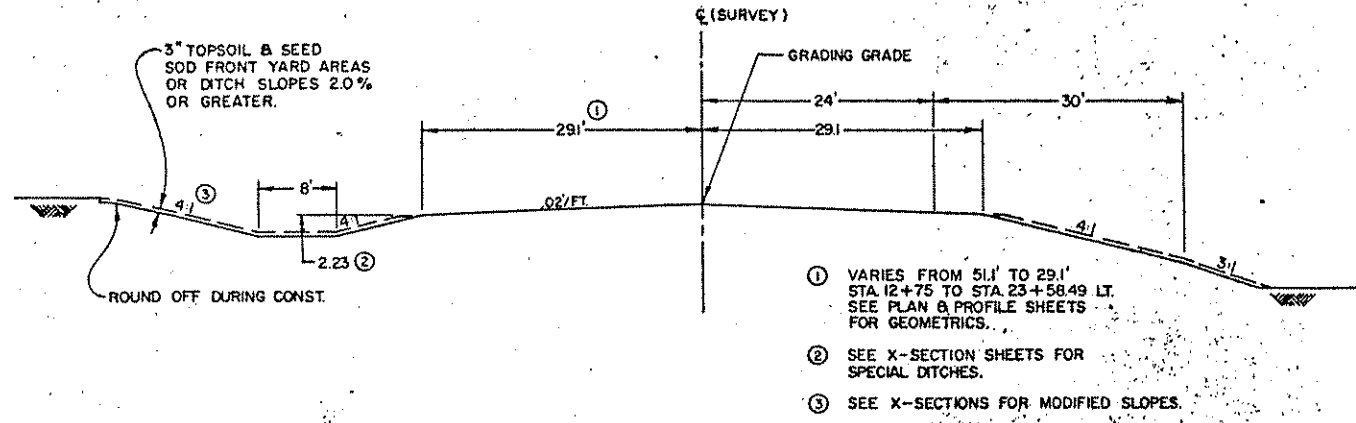
STATION	LOC.	SALVAGE	INSTALL	REMARKS
14+21 - 18+90	RT.	479'	469'	INSTALL FENCE ON R/W LINE
16+95	RT.	5'		LINE FENCE
19+60 - 30+48	LT.	1105'	1033'	
39+96 - 42+00	RT.	213'	204'	INSTALL FENCE ON R/W LINE
TOTALS		1802'	1761'	

STANDARD PLATES

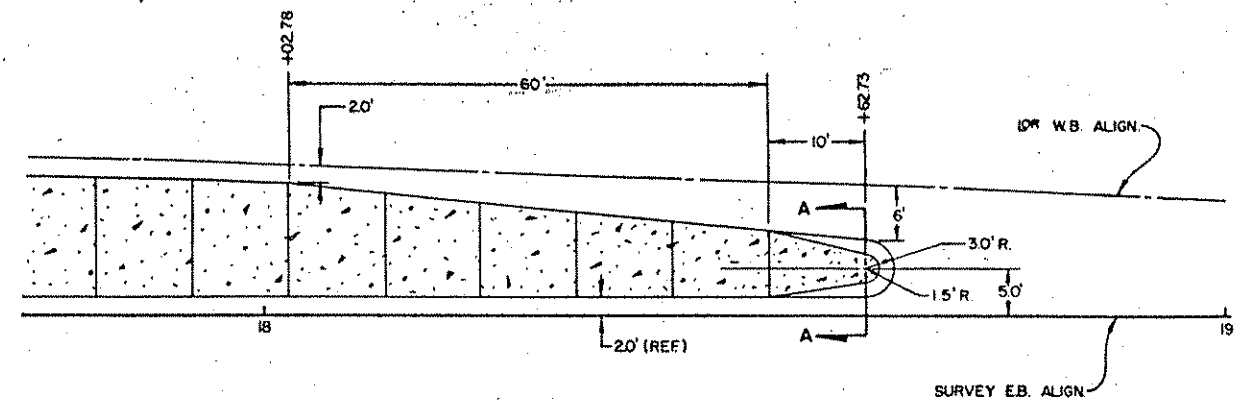
PLATE NO.	DESCRIPTION
3024 A	SPECIFICATION REFERENCE TO STANDARD PLATES
3040 F	CORRUGATED METAL PIPE CULVERT
3014 J	REINFORCED CONCRETE PIPE-ARCH DETAIL
3110 F	CONCRETE APRON FOR REINFORCED CONCRETE PIPE-ARCH
3123 H	METAL APRON FOR C.H. PIPE
8000 H	STANDARD BARRICADES
9000 B	APPROACHES AND ENTRANCES
9102 C	SODDING AT PIPE CULVERT ENDS

REV. 3-1-84 J.L.
REV. 5-10-84 K.B.

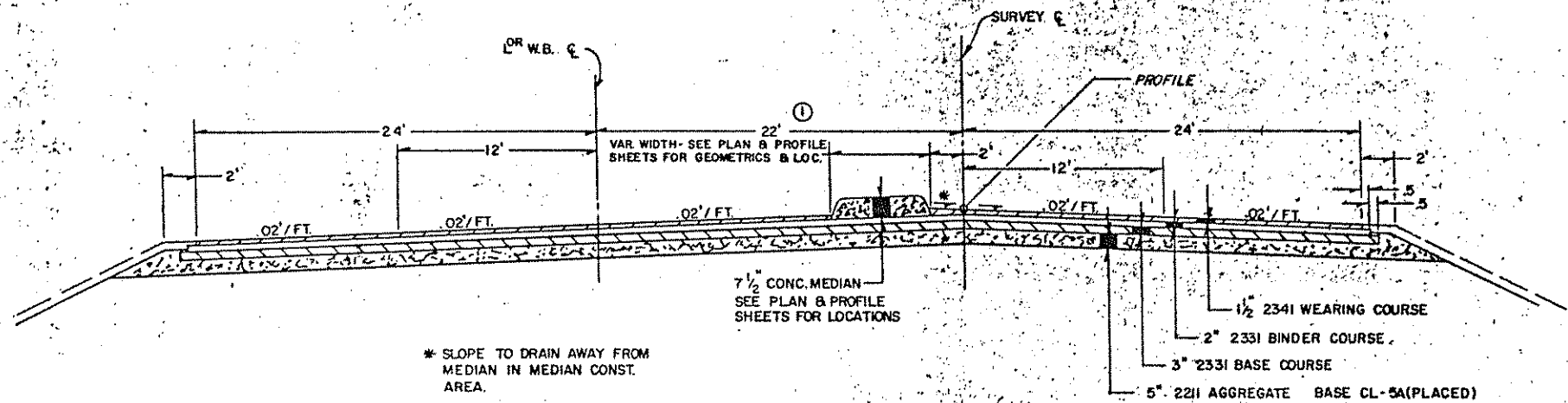
GRADING



- ① VARIES FROM 51.1' TO 29.1' STA. 12+75 TO STA. 23+58.49 LT. SEE PLAN & PROFILE SHEETS FOR GEOMETRICS.
- ② SEE X-SECTION SHEETS FOR SPECIAL DITCHES.
- ③ SEE X-SECTIONS FOR MODIFIED SLOPES.

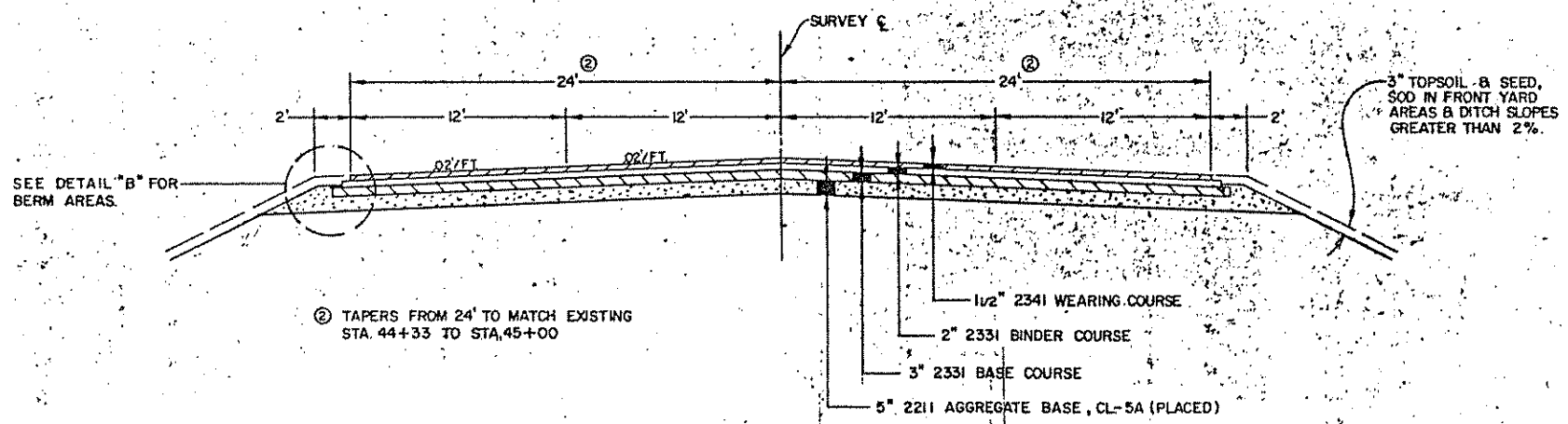


BASE & BITUMINOUS SECTION
STA. 12+75 - STA. 23+58.49

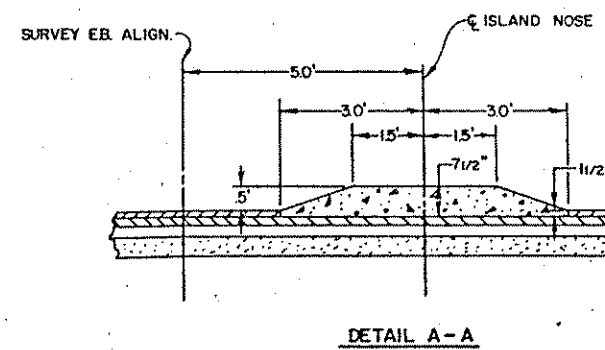


- ① VARIES FROM 22'-0" STA. 12+75 TO 0' STA. 23+58.49 LT. SEE PLAN & PROFILE SHEETS FOR GEOMETRICS.

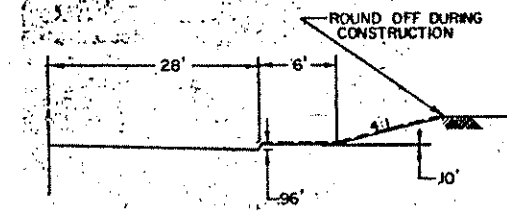
BASE & BITUMINOUS SECTION
STA. 23+58.49 - STA. 44+33



- ② TAPERS FROM 24' TO MATCH EXISTING STA. 44+33 TO STA. 45+00



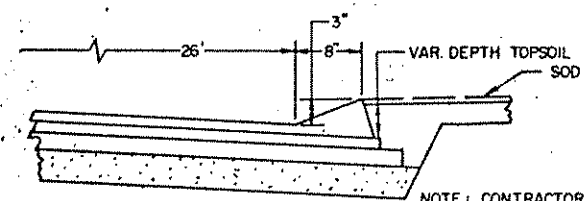
BERM SECTION



LOCATIONS

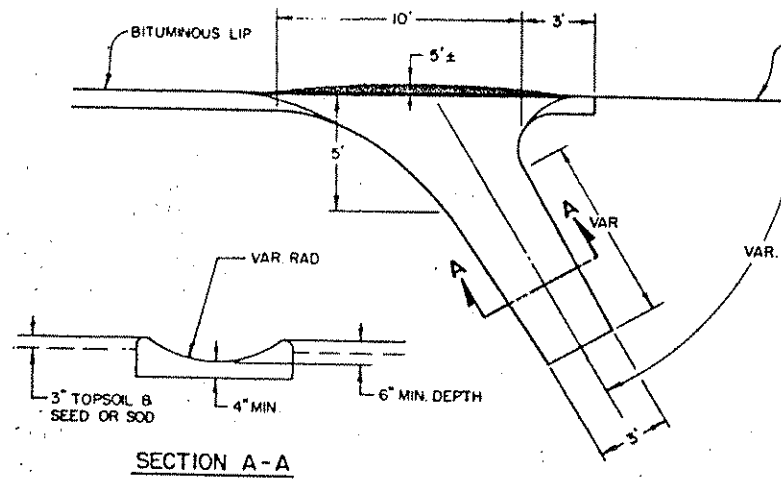
- 18+65 - 21+00 LT.
- 20+50 - 22+00 RT.
- 30+00 - 32+00 LT.
- 33+00 - 35+85 RT.
- 38+50 - 42+50 LT.

DETAIL "B"



NOTE: CONTRACTOR MAY MODIFY LIP DESIGN UPON APPROVAL OF ENGINEER.

TYPICAL BITUMINOUS FLUME



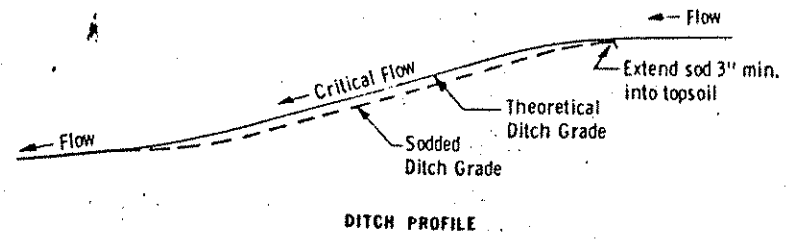
DENOTES AREA OF INCREASED SLOPE TO DIVERT WATER FLOW INTO FLUME. THIS MUST BE ACCOMPLISHED DURING SHOULDER PAVING OPERATIONS.

NOTE: BITUMINOUS FLUME CONSTRUCTION SHALL BE CONSIDERED INCIDENTAL TO CONSTRUCTION AND NO ADDITIONAL COMPENSATION WILL BE MADE.

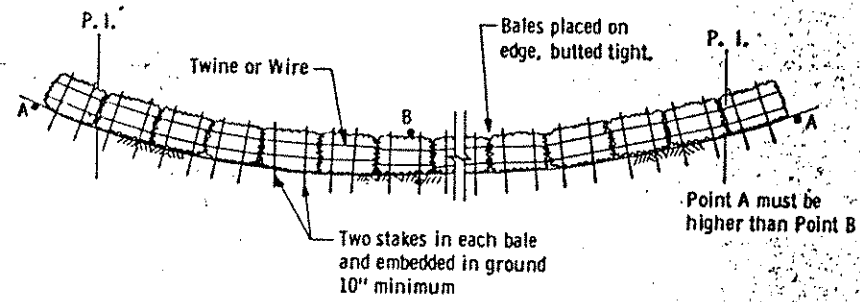
FLUME DESIGN MAY BE MODIFIED TO MATCH EXISTING CONDITIONS UPON APPROVAL OF THE ENGINEER.

LOCATION *
 18+65 LT.
 20+50 RT.
 32+00 LT.
 35+85 RT.
 38+50 LT.

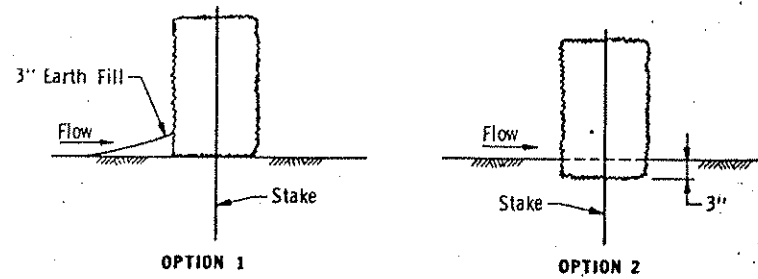
* LOCATIONS ARE APPROX. EXACT LOCATIONS ARE TO BE DETERMINED IN THE FIELD DURING CONST.



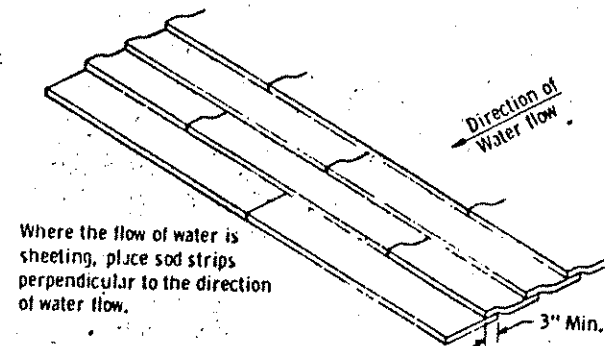
SODDED DITCH DETAILS



BALE HAY OR STRAW DITCH CHECK

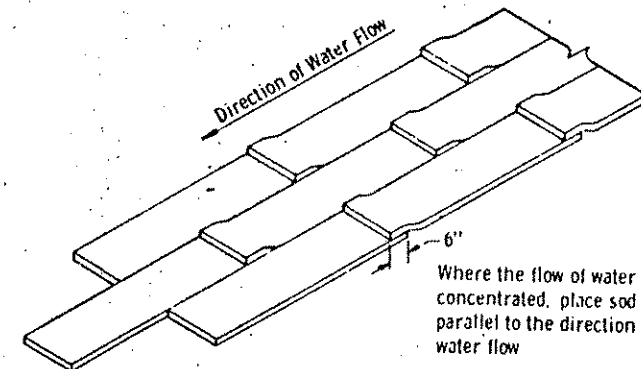


DITCH CHECK SECTIONS



SHINGLING SOD

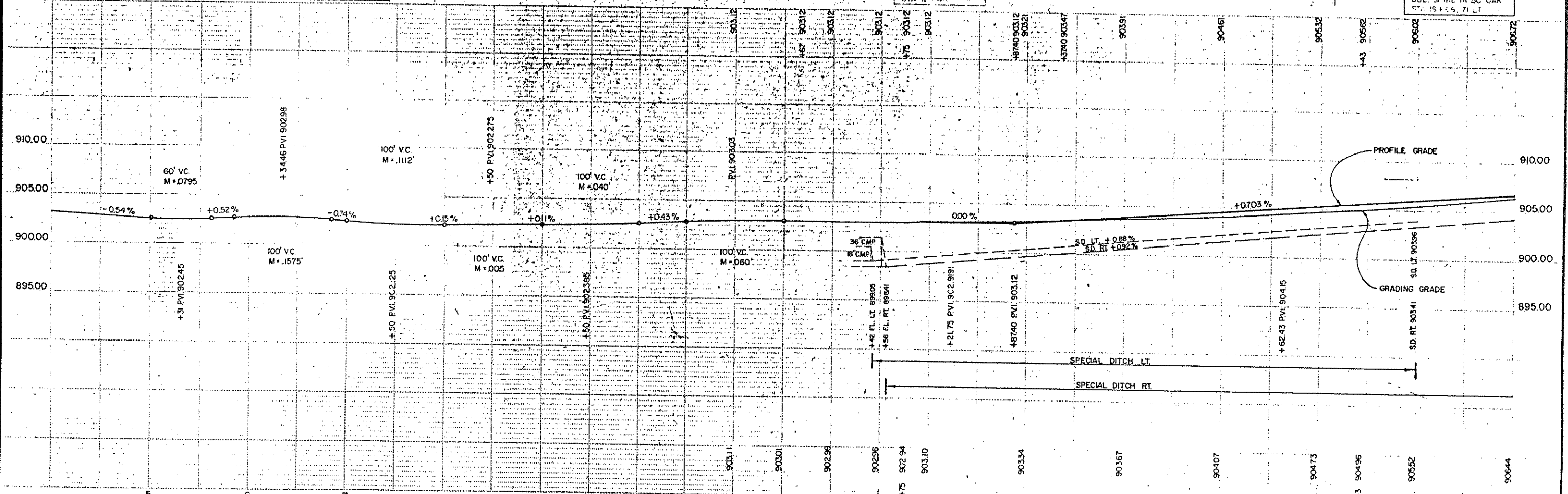
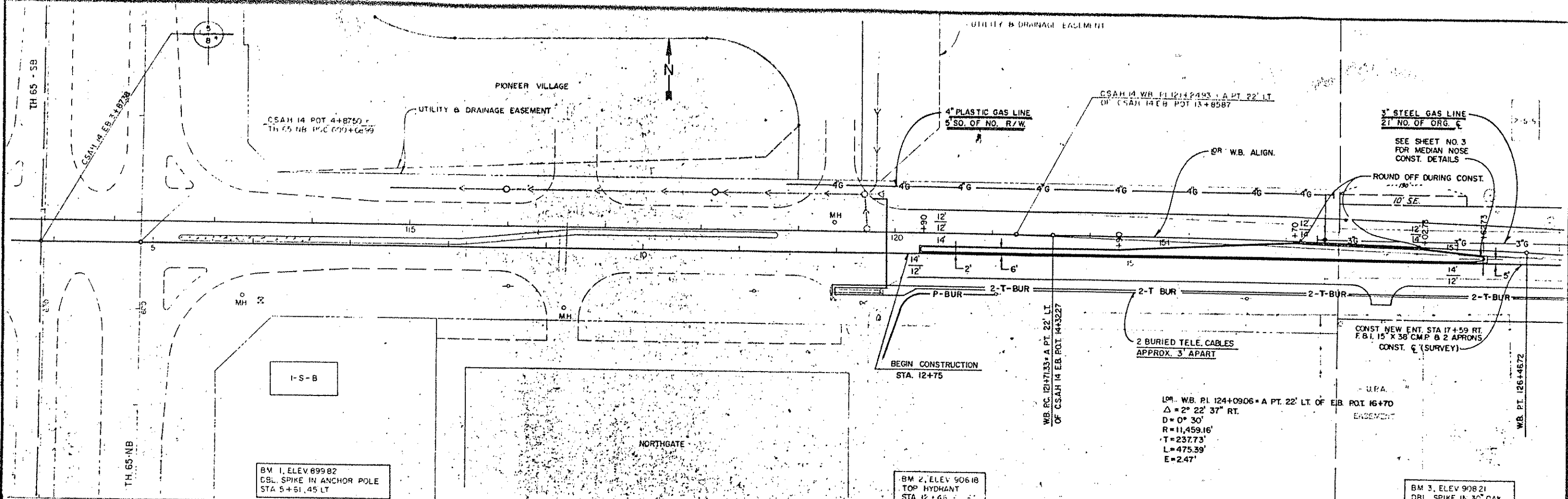
Where the flow of water is sheeting, place sod strips perpendicular to the direction of water flow.



OVERLAPPING SOD

Where the flow of water is concentrated, place sod strips parallel to the direction of water flow

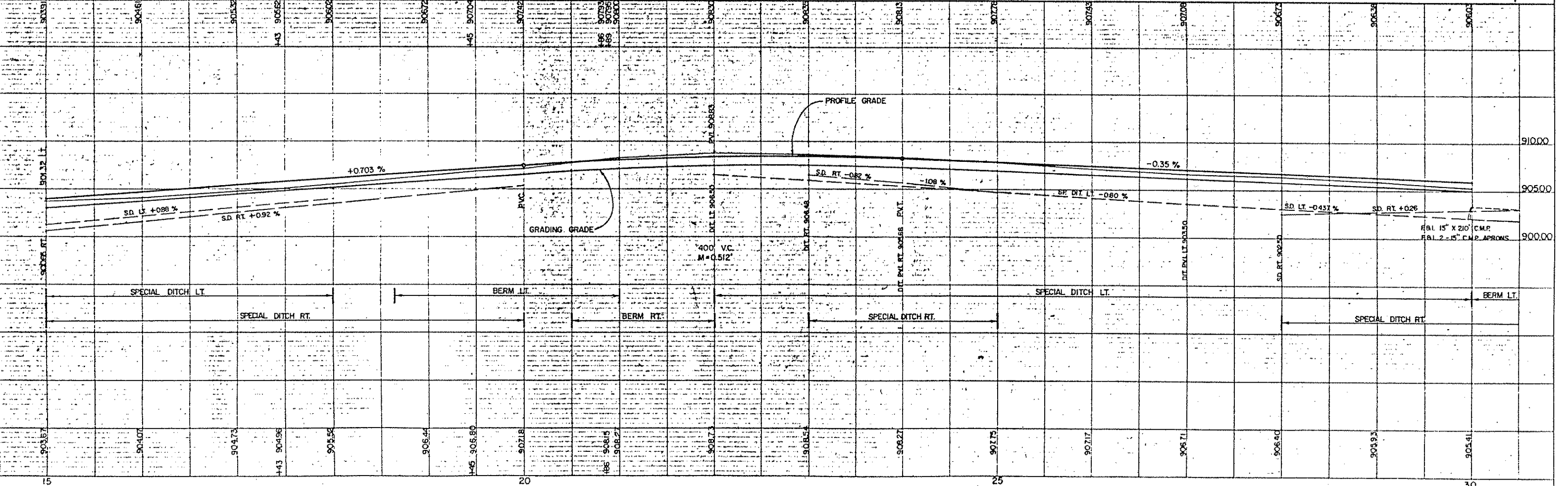
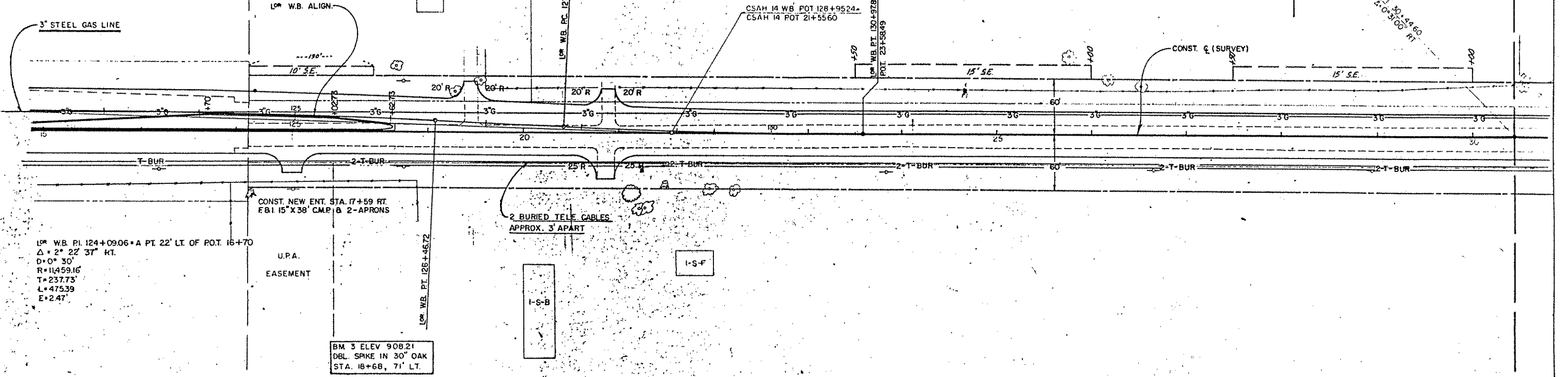
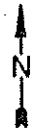
SPECIAL SOD PLACEMENT TECHNIQUES

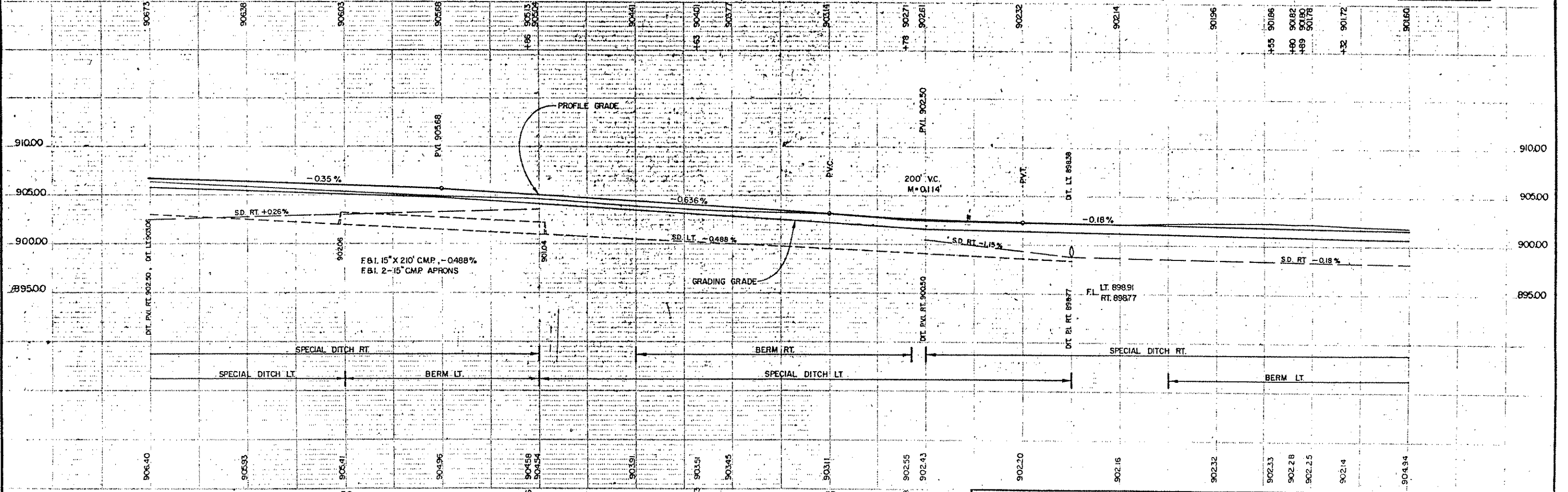
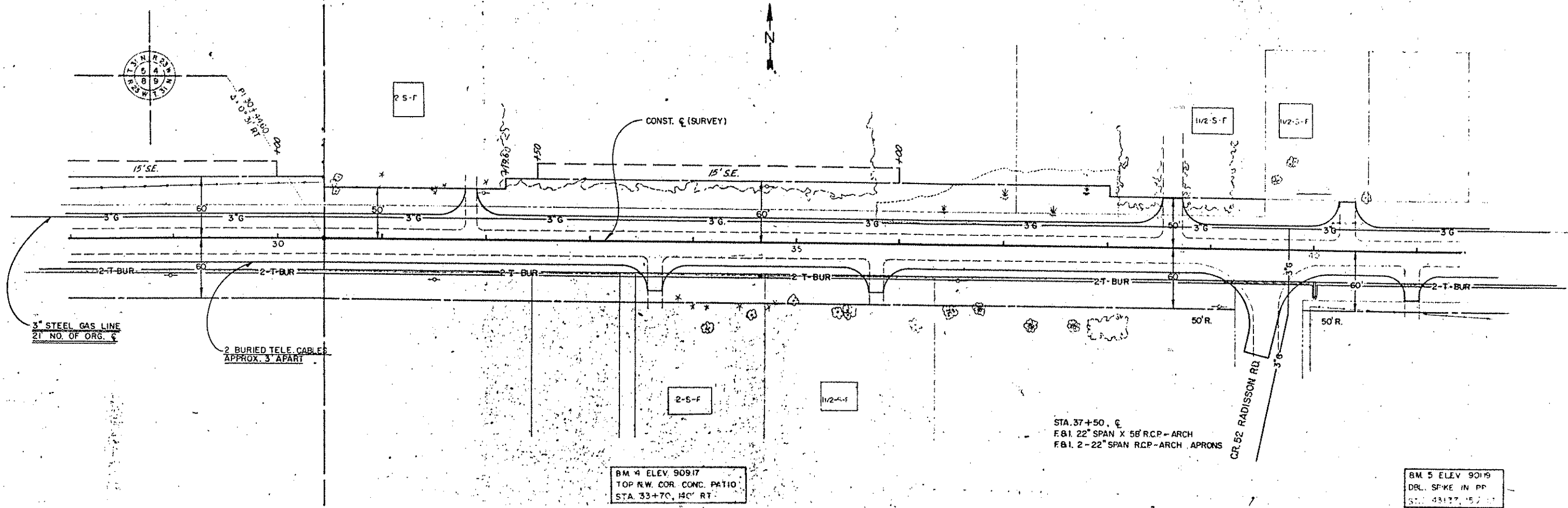
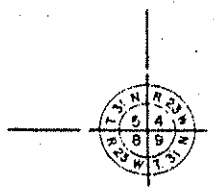


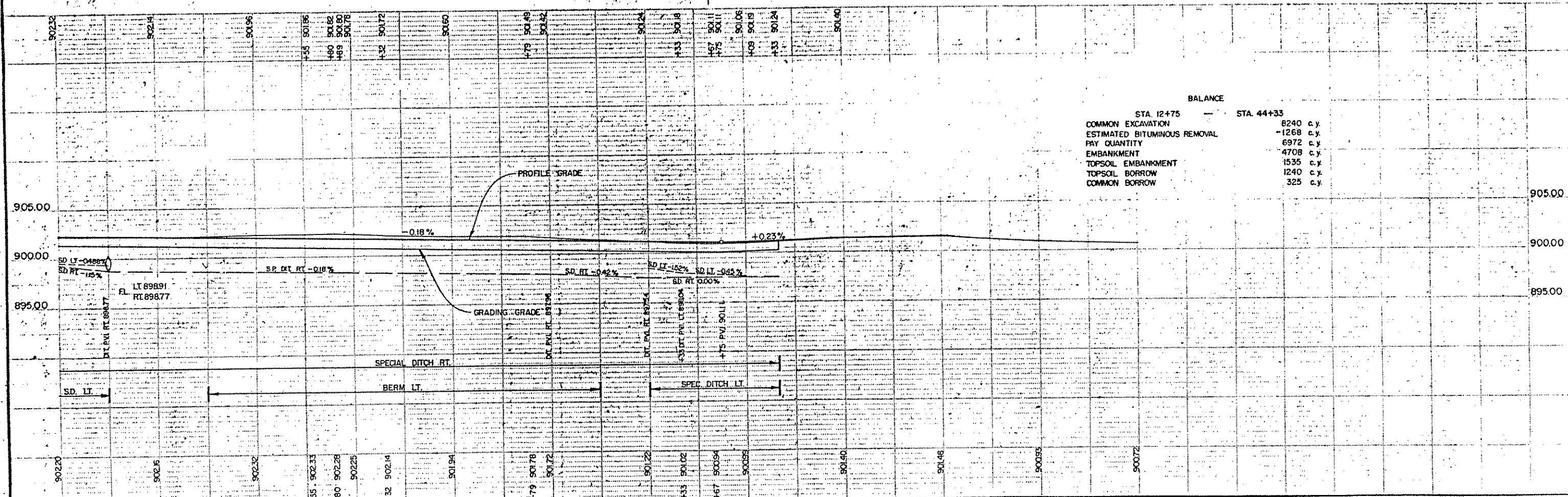
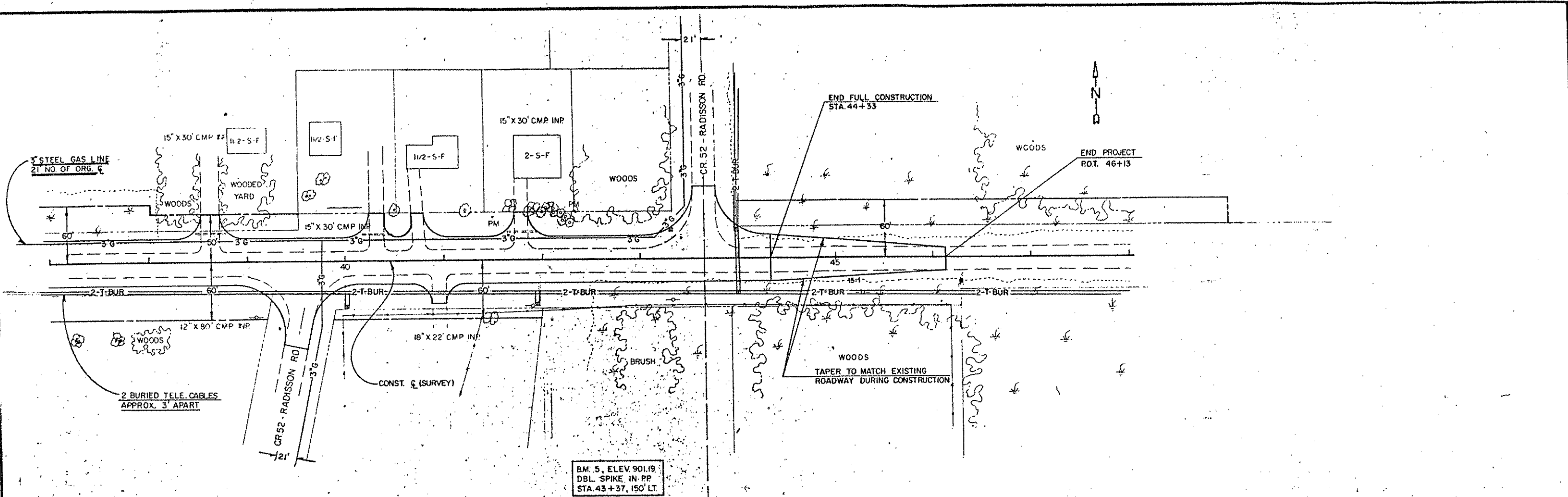
SEE SHEET NO. 4 FOR PLAN VIEW

REV 3-1-84 30 20 1-11-84

L^m W.B. PI. 129+39.45 • P.O.T. 22+00
 $\Delta = 2^\circ 22' 37''$ LT.
 $D = 0^\circ 45'$
 $R = 7,639.44'$
 $T = 158.49'$
 $L = 316.93'$
 $E = 164'$







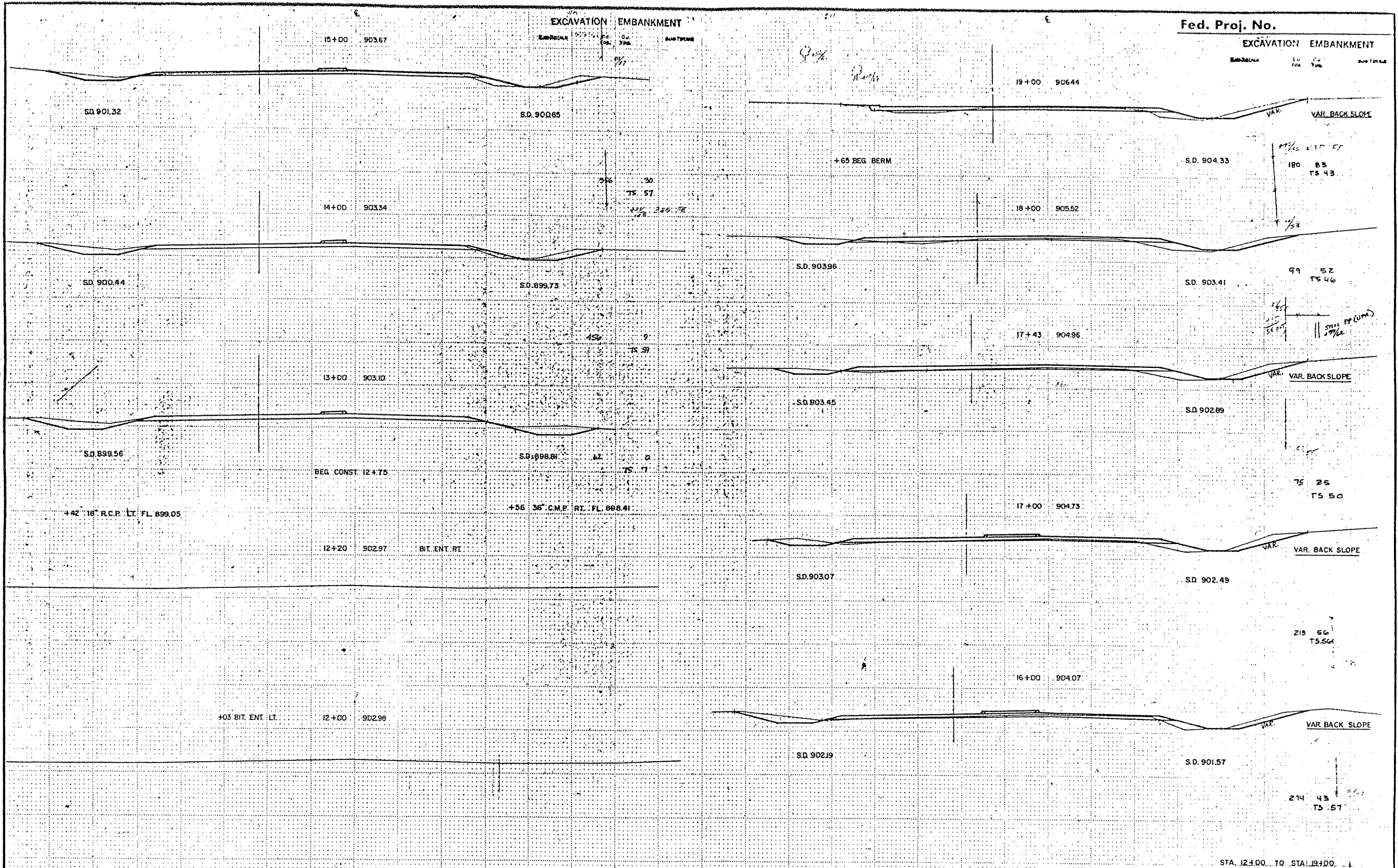
BALANCE	
STA. 12+75	STA. 44+33
COMMON EXCAVATION	8240 c.y.
ESTIMATED BITUMINOUS REMOVAL	-1268 c.y.
PAY QUANTITY	6972 c.y.
EMBANKMENT	4708 c.y.
TOPSOIL EMBANKMENT	1535 c.y.
TOPSOIL BORROW	1240 c.y.
COMMON BORROW	325 c.y.

REV 3-7-81 JK

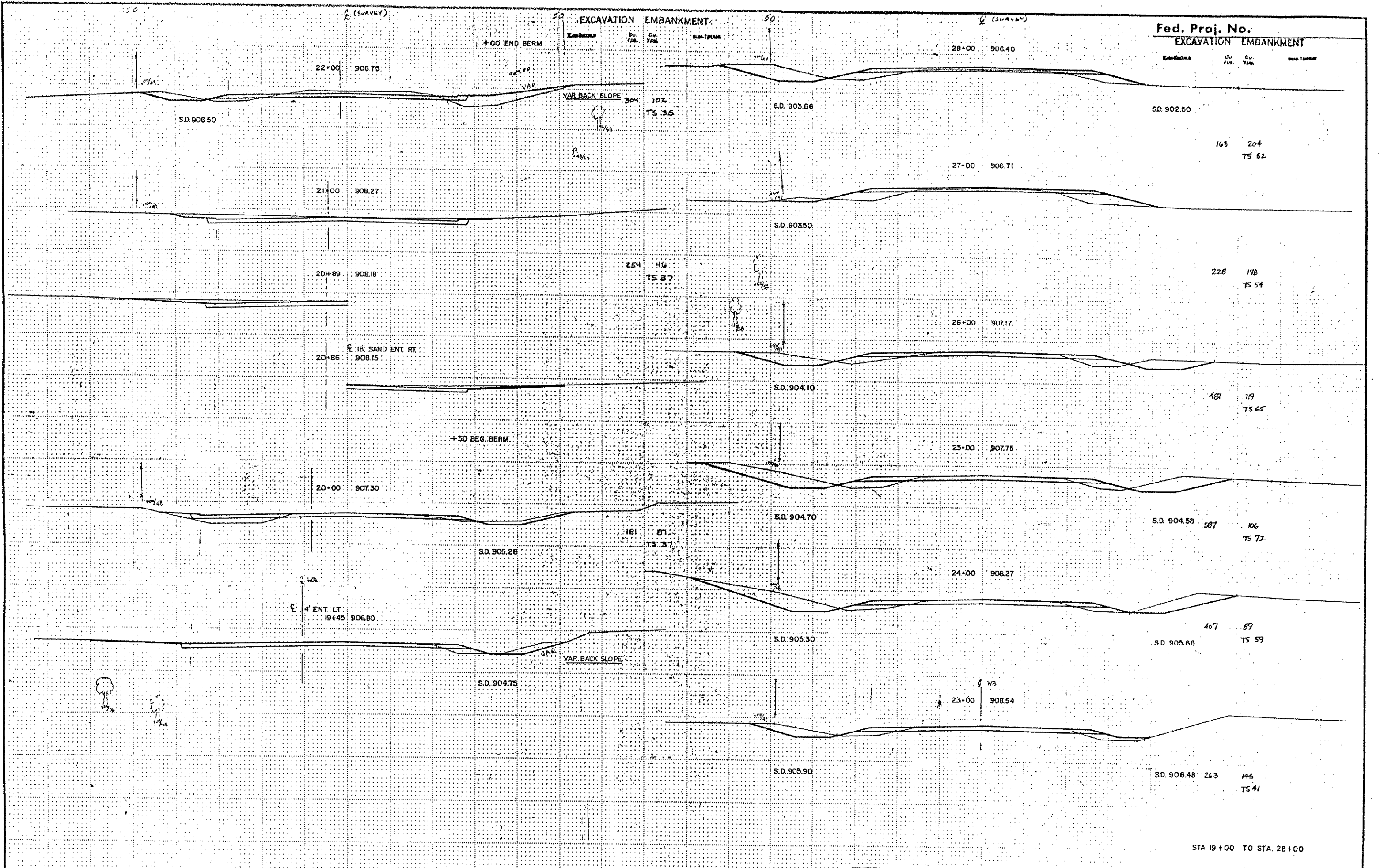
EXCAVATION EMBANKMENT

Fed. Proj. No.

EXCAVATION EMBANKMENT



STA. 12+00 TO STA. 19+00



STA. 19+00 TO STA. 28+00

EXCAVATION EMBANKMENT

Fed. Proj. No.

EXCAVATION EMBANKMENT

Stationing and Elevation Data

12' SAND ENT. RT
902.55

Stationing and Elevation Data

+00 END BERM

32+00 904.54

S.D. 899.22

SD 90354

52 281
TS 41

35+00 903.11

+99 END SODDED YARD

12' ENT. LT.
31+86 904.58

S.D. 899.60

SD 90350

320 248
TS 59

+10 BEGIN SODDED YARD

31+00 904.96

S.D. 900.09

34+00 903.45

SD 90328

326 322
TS 61

+00 BEGIN BERM

30+00 905.41

41 522
TS 44

S.D. 900.27

14' SAND ENT. RT
33+63 903.54

SD 90302

222 207
TS 52

33+00 903.91

+00 BEGIN BERM &
SODDED YARD

0 902.63

29+00 905.93

S.D. 900.57

181 336
TS 48

VAR. BACK SLOPE

SD 902.63

SD 902.76

319 128
TS 57

STA 29+00 TO STA 35+00

EXCAVATION EMBANKMENT

Fed. Proj. No.

Excavation EMBANKMENT

EXCAVATION EMBANKMENT

Excavation EMBANKMENT

