

CONVENTIONAL SYMBOLS

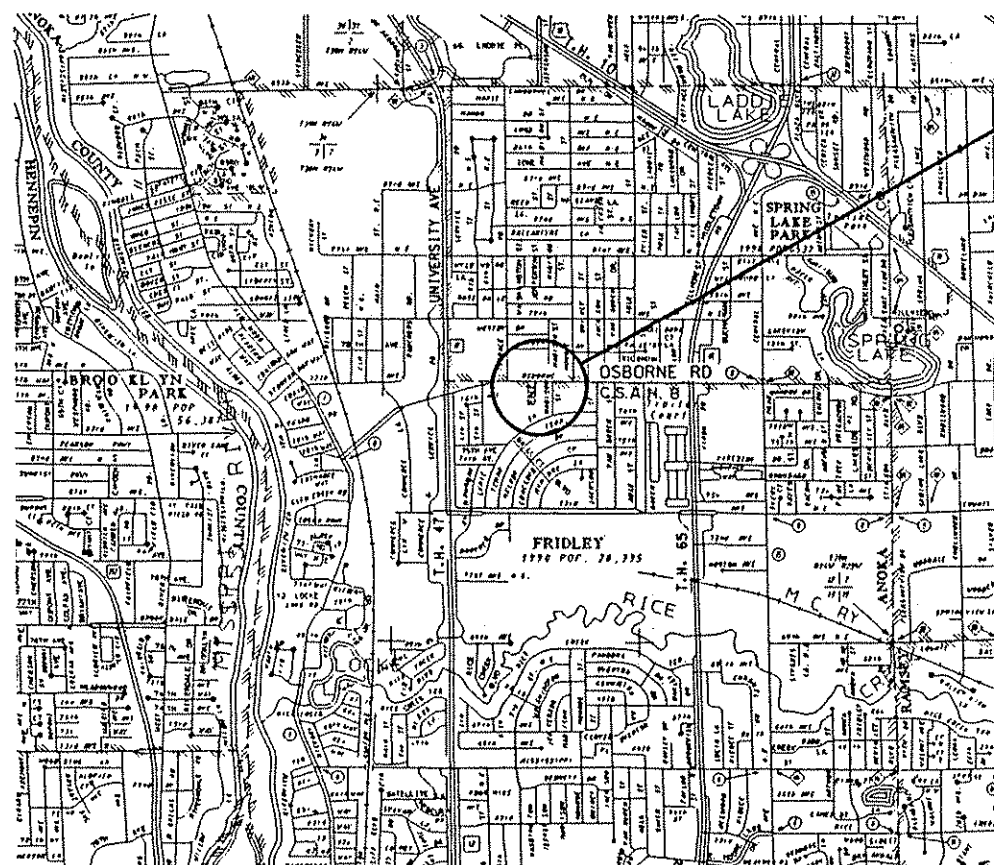
- Section Line _____
- Quarter Line _____
- Sixteenth Line _____
- Property Line _____
- R/W Boundary R/W
- Existing D.O.T. R/W Line _____
- And Other Road R/W's _____
- Railroad R/W _____
- Private Easement _____
- Temporary Easement T.E.
- Building Removal Easement B.R.E.
- R/W Parcel Number 3/4
- Access Control _____
- Access Opening open _____
- Cast Iron Monument or 2"x2" D.O.T. Iron Pipe with Aluminum Cap
- 3/4" D.O.T. Iron Pin
- Other Iron Monument
- Concrete or Stone Monument
- R/W Boundary Corner

UTILITY SYMBOLS

- POWER POLE LINE
- TELEPHONE OR TELEGRAPH POLE LINE
- JOINT TELEPHONE AND POWER ON POWER POLE
- ON TELEPHONE POLES
- ANCHOR
- STREET LIGHT
- PEDESTAL (TELEPHONE CABLE TERMINAL) PED.
- GAS MAIN G
- WATER MAIN
- CONDUIT
- TELEPHONE CABLE IN CONDUIT
- ELECTRIC CABLE IN CONDUIT
- TELEPHONE MANHOLE
- ELECTRIC MANHOLE
- BURIED TELEPHONE CABLE T-BUR
- BURIED ELECTRIC CABLE P-BUR
- AERIAL TELEPHONE CABLE T-AE
- SEWER (SANITARY OR STORM)
- SEWER MANHOLE

CONSTRUCTION OF FULL TRAFFIC ACTUATED TRAFFIC CONTROL SIGNAL SYSTEM IN THE CITY OF FRIDLEY, ANOKA COUNTY, MINNESOTA AT C.S.A.H. 8 AND THE UNITY HOSPITAL ENTRANCE

SYMBOLS		INDEX	
SYMBOL	DESCRIPTION	PAGE	DESCRIPTION
	- EOG CONNECTION	1	TITLE SHEET
	- EVP DETECTOR DIRECTION	2	UTILITY LOCATIONS AND SIGNS
	- LUMINAIRE NO.	3	INTERSECTION LAYOUT
	- SIGNAL BASE NO.	4	WIRING DIAGRAM
	- SIGNAL FACE NO.	5	SERVICE EQUIPMENT PAD AND CONTROLLER PAD DETAILS
	- SPLICE	6	MISC. DETAILS & STANDARD PLATES



PROJECT LOCATION
C.P. 93-26-08, S.A.P. 127-020-12
C.S.A.H. 8 AND
THE UNITY HOSPITAL ENTRANCE

ANOKA COUNTY HIGHWAY DEPARTMENT

SPECIFICATIONS

THE 1988 EDITION OF THE MINNESOTA DEPARTMENT OF TRANSPORTATION "STANDARD SPECIFICATIONS FOR CONSTRUCTION" AS AMENDED BY THE JANUARY 2, 1991 SUPPLEMENTAL SPECIFICATION SHALL GOVERN.

Approved DATE 6/3/94
CITY OF FRIDLEY ENGINEER

Approved DATE 2/7/94
ANOKA COUNTY ENGINEER

Recommended for Approval DATE 3/25/94
STATE AID DIVISION ENGINEER

Recommended for Approval DATE 3-30-94
STATE AID PLANS AND SPECS ENGINEER

Approved DATE 3/30/94
STATE AID ENGINEER

ALL APPLICABLE FEDERAL, STATE AND LOCAL LAWS AND ORDINANCES WILL BE COMPLIED WITH IN THE CONSTRUCTION OF THIS PROJECT.

DESIGN DESIGNATION	
CSAH 8 (OSBORNE RD) C.P. 93-26-08	
R _____ NA	EN18 (20) _____ NA
ADT (Current Year) 1994 = 13,306	Design Speed <u>35</u> MPH
ADT (Future Year) 2014 = 22,620	Based on _____ NA Sight Distance
DHV (Design Hr. Vol.) = _____ NA	Height of eye _____ NA Height of object _____ NA
D (Directional Distr.) = 50/50 %	Design Speed not achieved at: _____ NA
T (Heavy Commercial) = _____ NA %	Functional Classification <u>Arterial-High Density</u>
SOIL FACTOR _____ NA	No. of Traffic Lanes <u>2</u>
	No. of Parking Lanes <u>2</u>
	Ton Design _____ NA

ESTIMATED QUANTITIES			
ITEM NO.		UNIT	TOTAL
2565.511	FULL TRAFFIC ACTUATED TRAFFIC CONTROL SIGNAL SYSTEM	SIGNAL SYSTEM	1 *
0565.601	EMERGENCY VEHICLE PREEMPTION SYSTEM	LUMP SUM	1 **

* - FUNDING SPLIT: 100% C.P. 93-26-08 (COUNTY LOCAL FUNDS)
** - FUNDING SPLIT: 66% S.A.P. 127-020-12 34% CITY LOCAL FUNDS

REVISION NO. _____ DATE _____

SCALE: AS NOTED

DESIGN BY: _____

CHECKED BY: _____

DATE: _____

COMING: 511-405

RECORD COPY BY: _____

DATE: _____

18327

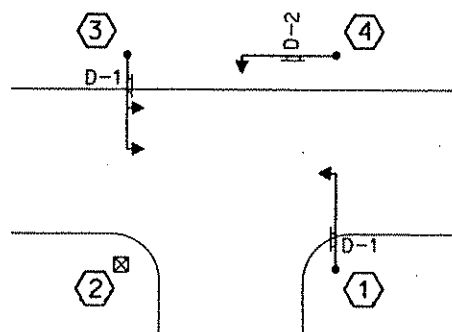
THESE PLANS AND SPECIFICATIONS ARE THE PROPERTY OF ANOKA COUNTY HIGHWAY DEPARTMENT AND ARE TO BE USED ONLY FOR THE PROJECT AND LOCATION SPECIFICALLY IDENTIFIED HEREON. ANY REPRODUCTION OR TRANSMISSION OF THESE PLANS OR SPECIFICATIONS TO ANY OTHER PROJECT OR LOCATION WITHOUT THE WRITTEN PERMISSION OF ANOKA COUNTY HIGHWAY DEPARTMENT IS STRICTLY PROHIBITED.

RONALD B. BRAY
01/20/94

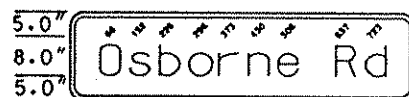
TITLE SHEET
C.S.A.H. 8 (OSBORNE RD) AND
THE UNITY HOSPITAL ENTRANCE
C.P. 93-26-08
FRIDLEY, MINNESOTA

Ort
Schelen
Mayeron &
Associates, Inc.
Engineers - Planners - Surveyors
500 Park Place Center • 575 Vespera Boulevard
Minneapolis, MN 55416-1228 • 612-696-5775

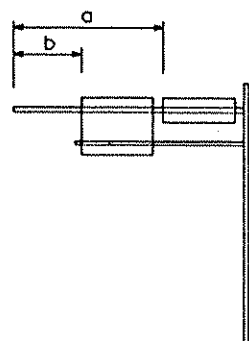
SIGN PANEL LAYOUT



60" X 30" D-1
D9-2B STANDARD SIGN - WHITE ON BLUE



84" X 18", 3" R, 1.0" B, D-2
LINE 1 70.79 : 8"-6" E MOD



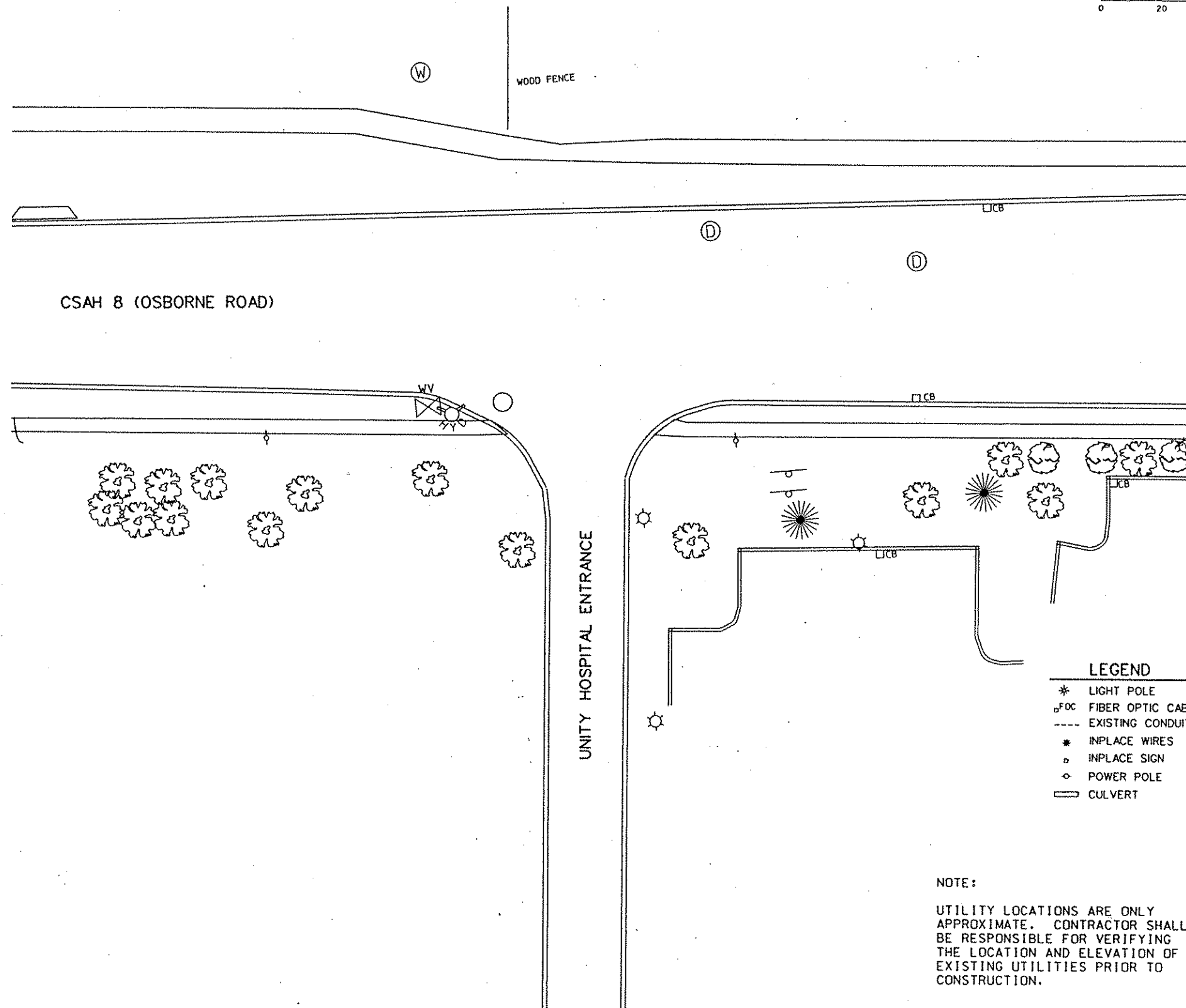
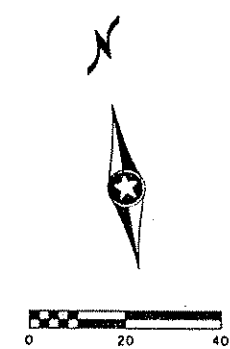
TYPE D SIGNS

Sign Panel	Size	No. Req.	No. Posts per Sign	Post Spacing	Sq. Ft. per Sign	Pole No.	Location on Mastarm ①	
							a	b
D-1	60"x30"	2	3	45"	12.5	1, 3, 4	2, 5	
D-2	84"x18"	1	3	45"	10.5	1, 3, 4	2, 5	

① SEE DETAIL

GENERAL NOTES

1. Color - White legend and border on green background, fully reflectorized.
2. Corners extending beyond the border shall not be trimmed.
3. See Standard Signs Manual for arrow and overlay details.
4. For structural details, Type D Signs, see Standard Signs Manual, page 105A & B.
5. For type D Stringer and panel - Joint Detail, see Standard Signs Manual.



LEGEND

- * LIGHT POLE
- o FOC FIBER OPTIC CABLE
- EXISTING CONDUIT
- * INPLACE WIRES
- o INPLACE SIGN
- ◇ POWER POLE
- ▭ CULVERT

NOTE:
UTILITY LOCATIONS ARE ONLY APPROXIMATE. CONTRACTOR SHALL BE RESPONSIBLE FOR VERIFYING THE LOCATION AND ELEVATION OF EXISTING UTILITIES PRIOR TO CONSTRUCTION.

<p>DATE: 01/20/94</p> <p>BY: RONALD B. BRAY</p> <p>SCALE: AS NOTED</p> <p>PLAN BY: CTR</p> <p>CHECKED BY: RB</p> <p>DESIGN BY: CTR</p> <p>COM. NO.: 511405</p> <p>RECORD COPY BY: DATE</p>	<p>REVISION NO. DATE</p>	<p>EXPLANATION</p>	<p>THESE PLANS HAVE BEEN PREPARED BY OR UNDER THE CLOSE PERSONAL SUPERVISION OF AN ENGINEER REGISTERED IN THE STATE OF MINNESOTA.</p> <p>OSM Schelen & Mayeron Associates, Inc. Engineers & Architects • Planners • Surveyors 300 Park Place Circle • 5775 W. 13th Street • Minneapolis, MN 55416-1228 • 612-546-5775</p> <p>SIGNING AND UTILITIES SHEET C.S.A.H. 8 (OSBORNE RD) AND THE UNITY HOSPITAL ENTRANCE C.P. 93-26-08 FRIDLEY, MINNESOTA</p>
<p>PLAN NO. 2</p>			<p>S.A.P. 127-020-12 C.P. 93-26-08</p>

LOOP DETECTORS			
NUMBER	SIZE	FUNCTION	LOCATION
D1-1	2-6' X 6'	10/11	20' & 50'
D1-2	2-6' X 6'	10/11	5' & 35'
D2-1	6' X 6'	1	260'
D2-2	6' X 6'	1	260'
D6-1	6' X 6'	1	260'
D6-2	6' X 6'	1	260'
D8-1	6' X 6'	3/8	120'
D8-2	6' X 6'	3/8	120'
D8-3	2-6' X 6'	7	5'
D8-4	2-6' X 6'	1	5'

LOCATION-DISTANCE FROM STOP LINE TO DETECTOR

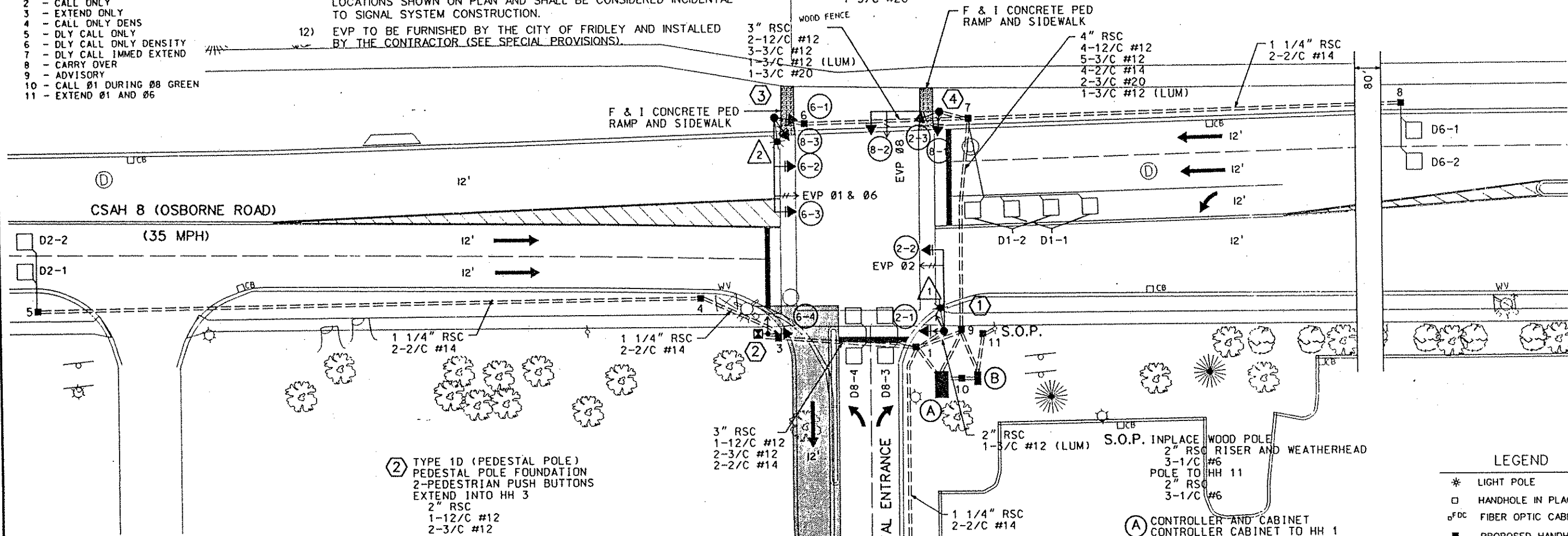
- FUNCTIONS:
- 1 - CALL AND EXTEND
 - 2 - CALL ONLY
 - 3 - EXTEND ONLY
 - 4 - CALL ONLY DENS
 - 5 - DLY CALL ONLY
 - 6 - DLY CALL ONLY DENSITY
 - 7 - DLY CALL IMMEDIATE EXTEND
 - 8 - CARRY OVER
 - 9 - ADVISORY
 - 10 - CALL Ø1 DURING Ø8 GREEN
 - 11 - EXTEND Ø1 AND Ø6

NOTES:

- 1) SEE SPECIAL PROVISIONS FOR COUNTY FURNISHED MATERIALS.
- 2) EACH SIGNAL FACE SHALL HAVE A BACKGROUND SHIELD.
- 3) EACH LUMINAIRE SHALL HAVE A PEC AND CHECK SWITCH.
- 4) SEE SHEET NO. 5 AND SPECIAL PROVISIONS FOR SERVICE CABINET DETAILS.
- 5) DIRECTIONAL SIGNS (TYPE D) TO BE FURNISHED AND INSTALLED ON MAST ARMS AT POLES 1, 3 AND 4 AND SHALL BE CONSIDERED INCIDENTAL.
- 6) SEE SPECIAL PROVISIONS FOR HANDHOLE TYPE.
- 7) SEE SPECIAL PROVISIONS FOR CONTRACTORS RESPONSIBILITY FOR LOCATION OF UTILITIES.
- 8) ALL PEDESTRIAN INDICATIONS SHALL BE 12" X 12".
- 9) ALL SIGNAL FACES SHALL BE 12 INCH 3 SECTION R-Y-G, EXCEPT FACES (6-3) (6-4) WHICH SHALL BE 12 INCH 5 SECTION R-Y-G-YLTA-GLTA.
- 10) ALL VEHICLE SIGNAL INDICATIONS SHALL USE GLASS LENSES.
- 11) CONCRETE PED RAMPS AND SIDEWALKS SHALL BE CONSTRUCTED AT LOCATIONS SHOWN ON PLAN AND SHALL BE CONSIDERED INCIDENTAL TO SIGNAL SYSTEM CONSTRUCTION.
- 12) EVP TO BE FURNISHED BY THE CITY OF FRIDLEY AND INSTALLED BY THE CONTRACTOR (SEE SPECIAL PROVISIONS).

- ③ TYPE PA90-A35-D30-9 (DAVIT AT 350°) PA90 POLE FOUNDATION
 2-ONEWAY SIGNALS OVERHEAD (0' AND 18' FROM END OF MAST ARM)
 R10-12 (24x30) MOUNTED 3' FROM END OF MAST ARM
 ONEWAY EVP DETECTOR AND LIGHT (6' FROM END OF MASTARM)
 TYPE 10B - AT 0°
 TYPE 10A - AT 270°
 LUMINAIRE 250 WATT HPS
 1-PEDESTRIAN PUSH BUTTON
 EXTEND TO HH 6
 3" RSC
 2-12/C #12
 3-3/C #12
 1-3/C #12 (LUM)
 1-3/C #20

- ④ TYPE PA90-A25 PA90 POLE FOUNDATION
 ONEWAY SIGNAL OVERHEAD
 ONEWAY EVP DETECTOR AND LIGHT (6' FROM END OF MASTARM)
 TYPE 10A - AT 0°
 TYPE 10B - AT 270°
 1-PEDESTRIAN PUSH BUTTON
 EXTEND INTO HH 7
 3" RSC
 2-12/C #12
 2-3/C #12
 1-3/C #20



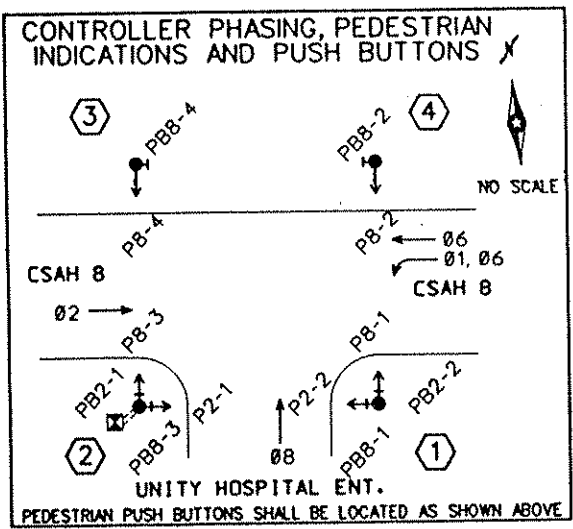
- ② TYPE 1D (PEDESTAL POLE) PEDESTAL POLE FOUNDATION
 2-PEDESTRIAN PUSH BUTTONS
 EXTEND INTO HH 3
 2" RSC
 1-12/C #12
 2-3/C #12

- ① TYPE PA90-A30-D30-9 (DAVIT AT 350°) PA90 POLE FOUNDATION
 ONEWAY SIGNAL OVERHEAD
 EVP DETECTOR AND LIGHT (6' FROM END OF MAST ARM)
 TYPE 10B - AT 270°
 TYPE 30A - AT 0°
 LUMINAIRE 250 WATT HPS
 2-PEDESTRIAN PUSH BUTTONS
 EXTEND TO HH 1
 3" RSC
 1-12/C #12
 4-3/C #12
 1-3/C #12 (LUM)
 1-3/C #20

- Ⓐ CONTROLLER AND CABINET CONTROLLER CABINET TO HH 1
 4" RSC
 2-12/C #12
 6-3/C #12
 1-3/C #20
 6-2/C #14
 CONTROLLER CABINET TO HH 9
 4" RSC
 4-12/C #12
 5-3/C #12
 2-3/C #20
 4-2/C #14
 CONTROLLER CABINET TO HH 10
 1 1/4" RSC
 3-1/C #6
 STUBOUT 3" RSC FOR FUTURE USE

- Ⓑ SERVICE CABINET FOUNDATION SERVICE CABINET TO HH 11
 2" RSC
 3-1/C #6
 SERVICE CABINET TO HH 10 (SERVICE)
 1 1/4" RSC
 3-1/C #6
 SERVICE CABINET TO HH 9 (LIGHTING)
 1 1/4" RSC
 2-3/C #12 (LUM)

- LEGEND
- * LIGHT POLE
 - HANDHOLE IN PLACE
 - FIBER OPTIC CABLE
 - PROPOSED HANDHOLE
 - EXISTING CONDUIT
 - * INPLACE WIRES
 - INPLACE SIGN
 - POWER POLE
 - ▨ CONCRETE PED RAMPS AND SIDEWALK
 - ▨ WIDENING BY OTHERS



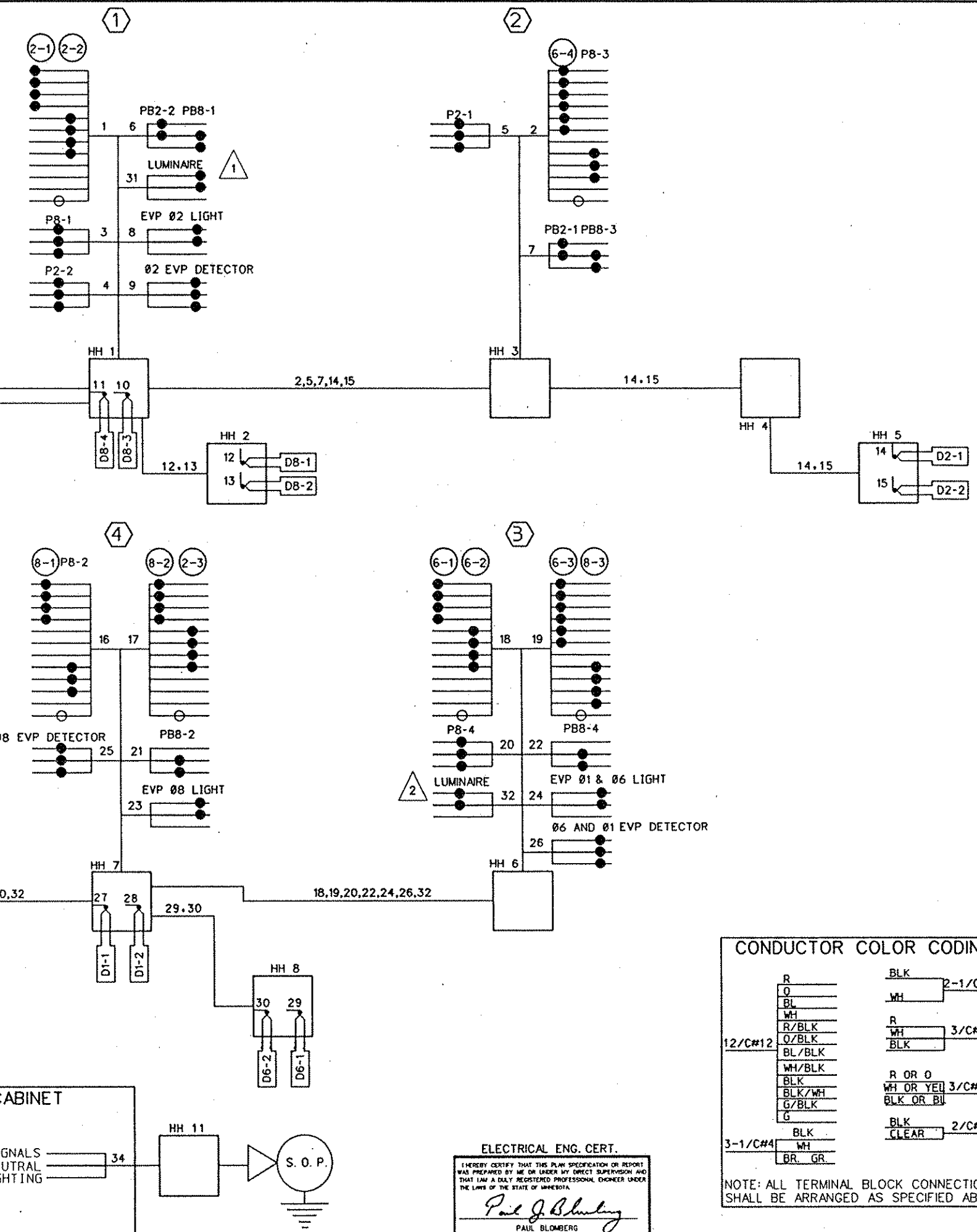
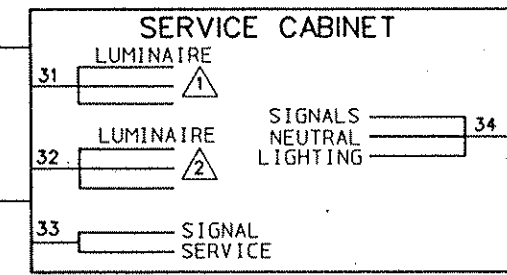
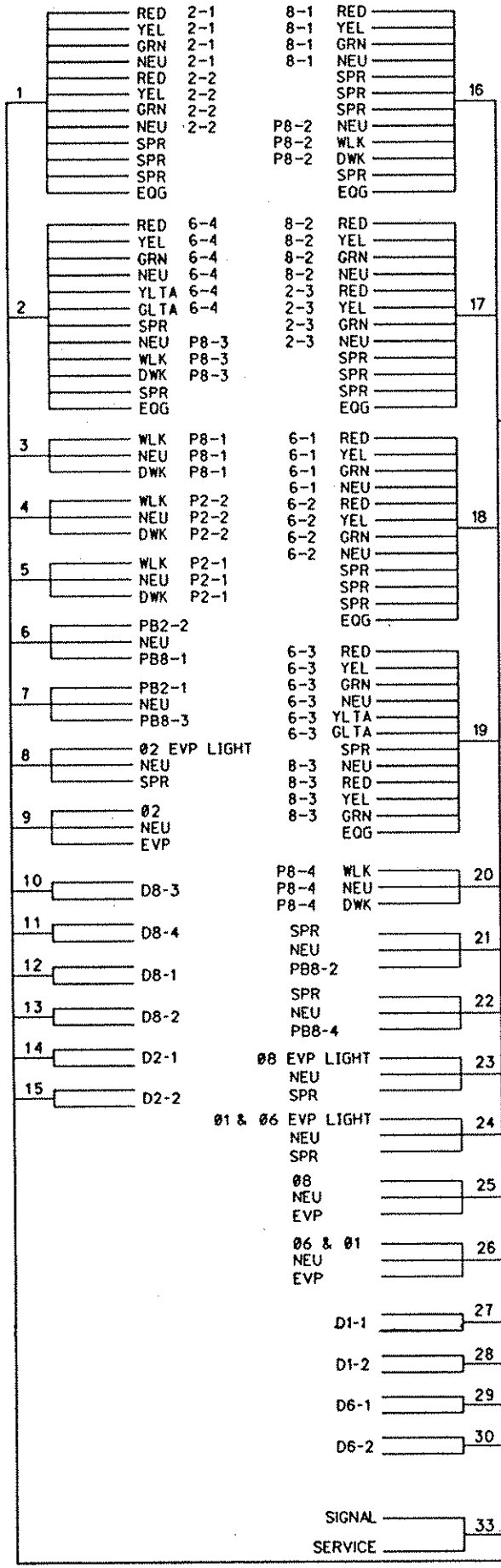
ELECTRICAL ENG. CERT.
 I HEREBY CERTIFY THAT THIS PLAN SPECIFICATION OR REPORT WAS PREPARED BY ME OR UNDER MY DIRECT SUPERVISION AND THAT I AM A DULY REGISTERED PROFESSIONAL ENGINEER UNDER THE LAWS OF THE STATE OF MINNESOTA.
 Paul J. Blumberg
 DATE: 01/26/94 REG. NO.: 13719

ORR Schelen & Associates, Inc.
 Engineers & Architects - Planners & Surveyors
 300 Park Place Center # 9775 Wayzata Boulevard
 Minneapolis, MN 55416-1226 • 612-996-5775

INTERSECTION LAYOUT
 C.S.A.H. 8 (OSBORNE RD) AND
 THE UNITY HOSPITAL ENTRANCE
 C.P. 93-26-08
 FRIDLEY, MINNESOTA

PLAN NO. 3

CONTROLLER CABINET



CONDUCTOR COLOR CODING

R	BLK	2-1/C#10
O	WH	
BL		
WH	R	3/C#12
R/BLK	WH	
O/BLK	BLK	
BL/BLK		
WH/BLK	R OR O	
BLK	WH OR YEL	3/C#20
BLK/WH	BLK OR BL	
G/BLK		
G	BLK	2/C#14
	CLEAR	
3-1/C#4	BLK	
	WH	
	BR. GR.	

NOTE: ALL TERMINAL BLOCK CONNECTIONS SHALL BE ARRANGED AS SPECIFIED ABOVE

ELECTRICAL ENG. CERT.
 I HEREBY CERTIFY THAT THIS PLAN SPECIFICATION OR REPORT WAS PREPARED BY ME OR UNDER MY DIRECT SUPERVISION AND THAT I AM A DAILY REGISTERED PROFESSIONAL ENGINEER UNDER THE LAWS OF THE STATE OF MINNESOTA.
Paul J. Blomberg
 PAUL BLOMBERG
 DATE: 01/26/94 REG. NO. 13719

REVISION NO. DATE

SCALE: AS NOTED

DESIGN BY: CTR

CHECKED BY: JOMAN: 511405

RECORD COPY BY: DATE

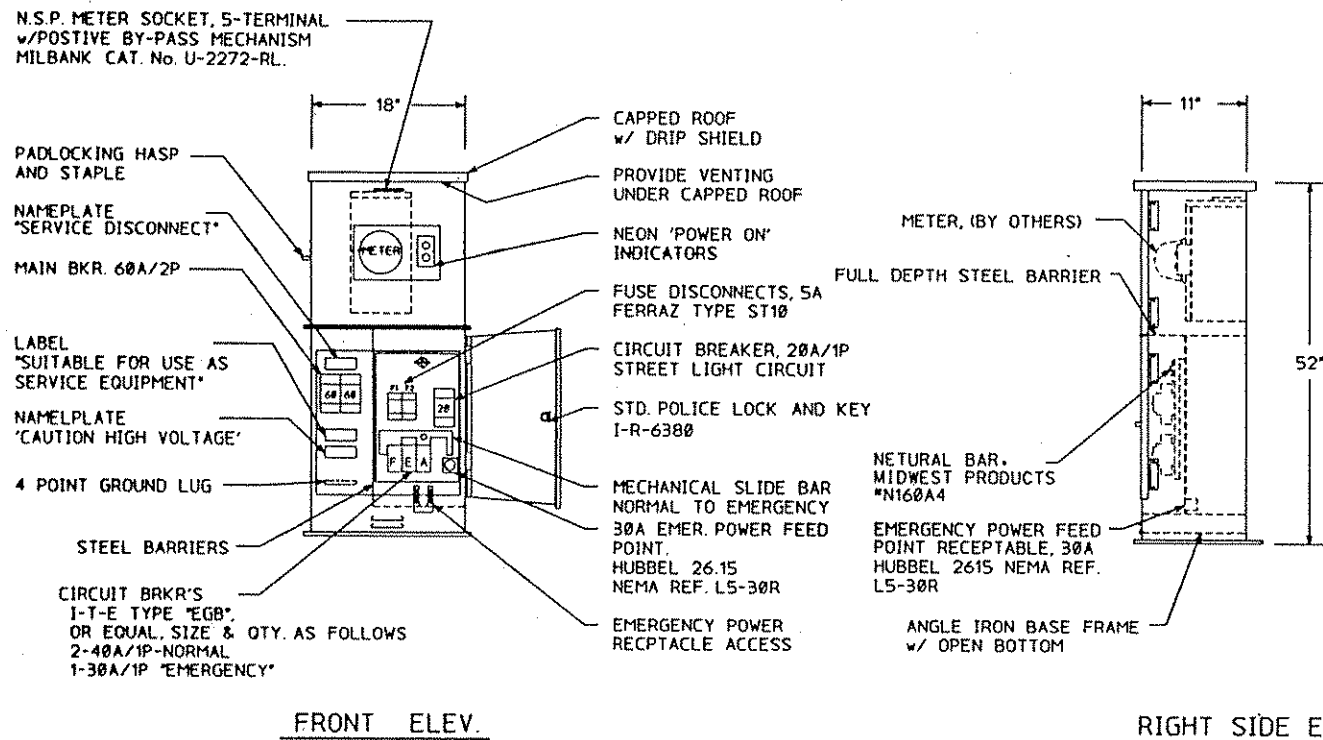
1332

WIRING DIAGRAM
 C.S.A.H. 8 (OSBORNE RD) AND
 THE UNITY C.P. 93-26-08
 FRIDLEY, MINNESOTA

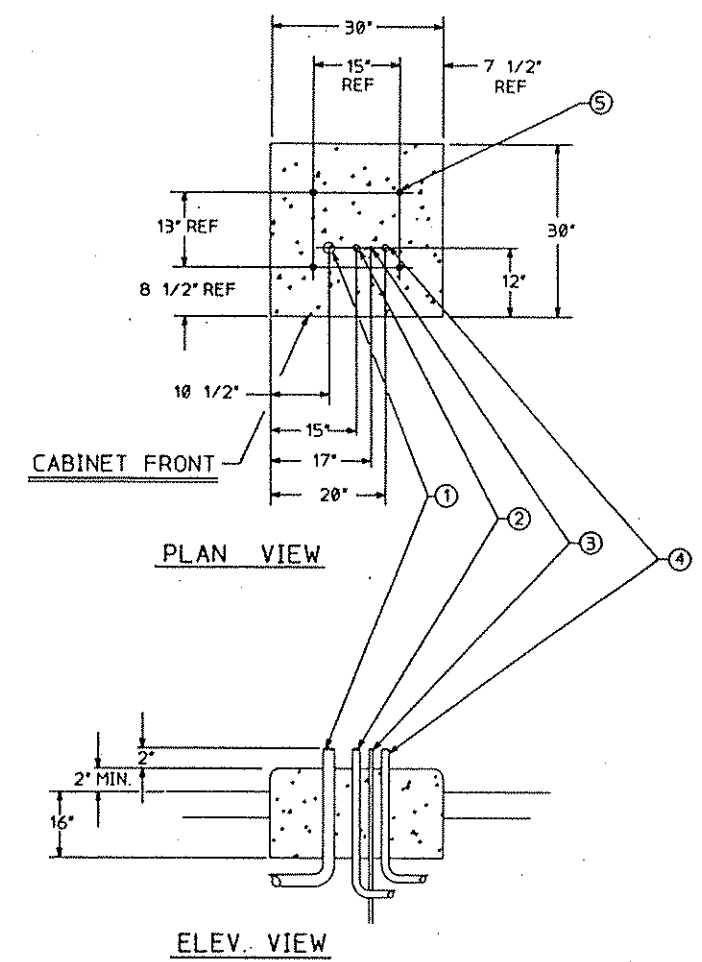
Ort Schelen & Mayeron & Associates, Inc.
 Engineers & Architects - Planners & Surveyors
 300 Park Place Center # 575 Wyzata Boulevard
 Minneapolis, MN 55416-1228 • 612-590-5775

PLAN NO. 4

SIGNAL SERVICE CABINET



SERVICE CABINET FOUNDATION

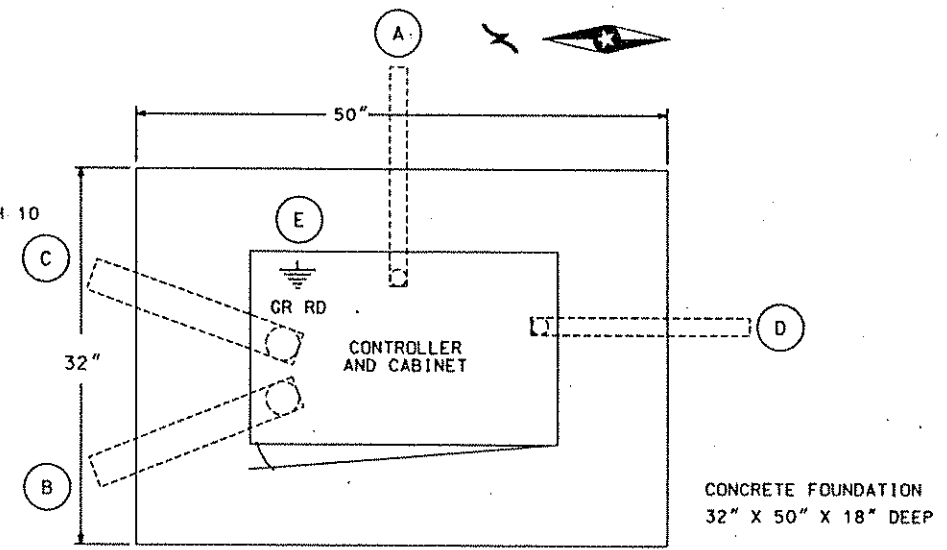


- ① 2" RSC FROM SOURCE OF POWER (VIA HANDHOLE 11)
- ② 1 1/2" RSC TO CONTROLLER CABINET (VIA HANDHOLE 10)
- ③ GROUNDING ROD
- ④ 1 1/2" RSC TO HANDHOLE 9 (STREET LIGHTING)
- ⑤ ANCHOR BOLT LOCATIONS (4 REQUIRED)

CONSTRUCTION NOTES

ENCLOSURE SHALL BE FABRICATED FROM #12 GA. ALL WELDED COLD ROLLED STEEL FOR OUTDOOR WEATHER PROOF SERVICE. DOORS TO BE GASKETED, ALL HINGES, PINS AND LOCKS TO BE OF NON CORRODING CONSTRUCTION. CABINET TO BE PRIMED INSIDE AND OUT WITH RUST INHIBITTING PRIMER. FINISH PER MN/DOT #3527

- (A) 1 1/2" R.S.C. FOR SERVICE CONNECTION TO HH 10
- (B) 4" R.S.C. TO HH 1
- (C) 4" R.S.C. TO HH 9
- (D) 3" R.S.C. STUBOUT, THREAD AND CAP BOTH ENDS (FOR FUTURE USE)
- (E) 5/8" DIA X 15' GROUND ROD

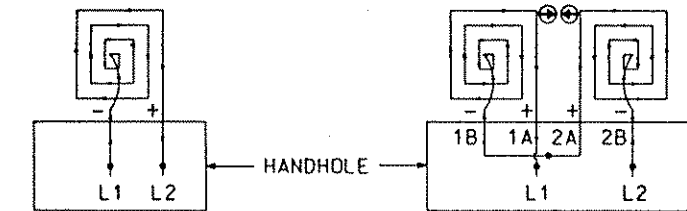
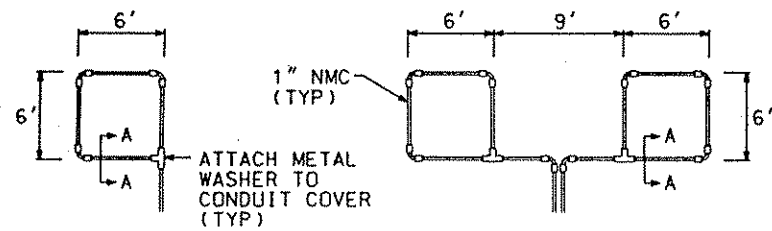


SEE INTERSECTION LAYOUT FOR CONDUIT & CABLE INFORMATION

CONTROLLER CABINET PAD LAYOUT
NO SCALE

ELECTRICAL ENG. CERT.
 I HEREBY CERTIFY THAT THIS PLAN SPECIFICATION OR REPORT WAS PREPARED BY ME OR UNDER MY DIRECT SUPERVISION AND THAT I AM A DAILY REGISTERED PROFESSIONAL ENGINEER UNDER THE LAWS OF THE STATE OF MINNESOTA.
Paul J. Blumberg
 PAUL BLUMBERG
 DATE: 01/20/94 REG. NO.: 13719

REVISION NO.	DATE	EXPLANATION
SCALE: AS NOTED	DESIGN BY: [Signature]	DATE: 01/20/94
PLAN BY: [Signature]	CHECKED BY: [Signature]	RECORD COPY BY: [Signature]
I HEREBY CERTIFY THAT THIS PLAN SPECIFICATION OR REPORT WAS PREPARED BY ME OR UNDER MY DIRECT SUPERVISION AND THAT I AM A DAILY REGISTERED PROFESSIONAL ENGINEER UNDER THE LAWS OF THE STATE OF MINNESOTA. <i>Ronald S. Gray</i> RONALD S. GRAY DATE: 01/20/94 REG. NO.: 13327		
SERVICE EQUIP. AND CONTROLLER PAD C.S.A.H. & (OSBORNE RD) AND THE UNITY C.P. 93-26-08 FRIDLEY, MINNESOTA		
OIT Schelen & Mayerson Associates, Inc. Engineers & Architects • Planners • Surveyors 300 Park Place Center • 5755 Watzila Boulevard Minneapolis, MN 55416-1228 • 612-996-3775		
PLAN NO.	5	

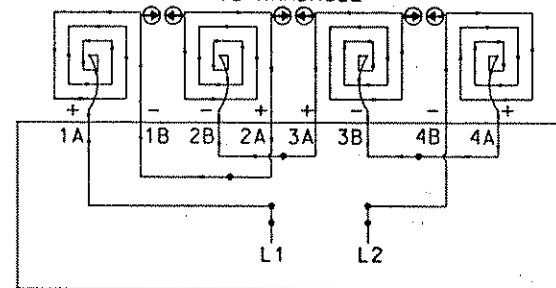
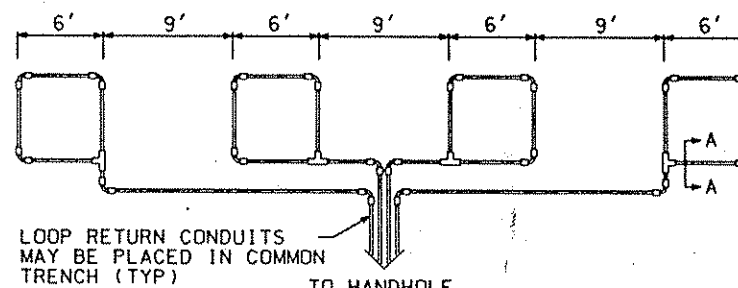


LOOP CONNECTIONS SHALL BE LABELED AND SPLICED IN THE HANDHOLE AS FOLLOWS:

L1 TO 1A
1B TO 2A
2B TO L2

LOOP DETECTOR
DETAIL 'A'
(LOOP PHASING FOR
SINGLE CONNECTION)

LOOP DETECTOR
DETAIL 'B'
(LOOP PHASING FOR
SERIES CONNECTION)

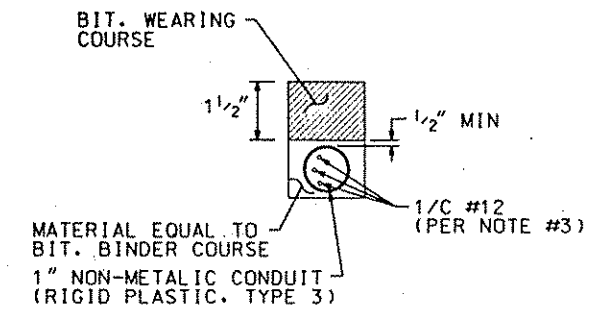


LOOP CONNECTIONS SHALL BE LABELED AND SPLICED IN THE HANDHOLE AS FOLLOWS:

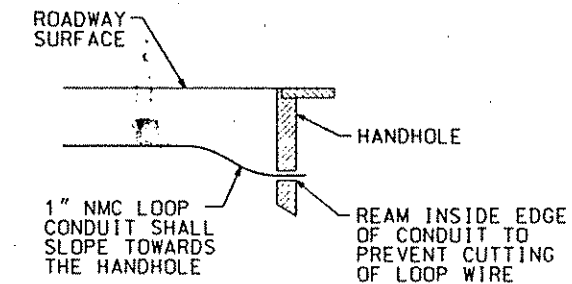
L1 TO 1A
1B TO 2A
2B TO 3A
3B TO 4A
4B TO L2

SPLICE CONTROL CABLE TO L1 & L2 IN HANDHOLE. ALL CONDUCTORS SHALL BE TAGGED IN HANDHOLE (1A, 1B, ECT)

LOOP DETECTOR
DETAIL 'C'
(LOOP PHASING FOR
SERIES CONNECTION)



SECTION A-A



DRAINAGE DETAIL

LOOP DETECTOR WIRING

- 1) ALL CORNERS SHALL BE 90° CONDUIT BENDS.
- 2) CONNECT WIRES IN HANDHOLES USING SPLICE KIT METHOD DESCRIBED IN THE SPECIAL PROVISIONS.
- 3) LOOP DETECTOR WIRES SHALL BE #12 AWG CROSSED LINKED POLYETHYLENE (XLP). SEE SPECIAL PROVISIONS.
- 4) LOOP LEAD IN WIRES SHALL BE TWISTED A MIN. OF (5) TURNS PER FOOT THROUGH THE CONDUIT TO THE HANDHOLE.
- 5) NMC DESIGNATES NON-METALLIC CONDUIT (SPEC. 3803)
- 6) LOOPS 6' x 6' THRU 6' x 14' SHALL HAVE (4) TURNS.
- 7) LOOPS 6' x 15' AND LARGER SHALL HAVE (2) TURNS.

THESE STANDARD PLATES AS APPROVED BY THE FHWA SHALL APPLY

STANDARD PLATES

PLATE NO.	DESCRIPTION
* 8110 C	TRAFFIC SIGNAL BRACKETING - POLE MOUNTED
* 8111 B	TRAFFIC SIGNAL BRACKETING - PEDESTAL MOUNTED
* 8112 C	PEDESTAL FOUNDATION
8113 C	MAGNETIC VEHICLE DETECTOR INSTALLATION
* 8115 C	PEDESTRIAN PUSH BUTTON INSTALLATION
* 8117 F	PRECAST CONCRETE HANDHOLE
* 8118 C	SERVICE EQUIPMENT AND POLE
* 8119 C	GROUND MOUNTED CABINET FOUNDATION
* 8120 J	PA85 AND PA90 POLE FOUNDATION
* 8121 C	TRANSFORMER BASE AND POLE BASE PLATE
* 8122 C	PEDESTAL AND PEDESTAL BASE
* 8123 C	POLE AND MAST ARM
* 8124 D	MAST ARM SIGNAL HEAD MOUNTS
8126 E	PA100 POLE FOUNDATION
* 0005 A	SPECIFICATION REFERENCE TO STANDARD PLATES
3124 B	METAL APRON CONNECTION
3221 C	CORRUGATED STEEL PIPE COUPLING BAND
* 7035 J	CONCRETE WALK AND CURB RETURNS AT ENTRANCES
* 7100 F	CONCRETE CURB AND GUTTERS
* 7036 D	PEDESTRIAN CURB RAMP

* - APPLIES TO THIS PROJECT

LEGEND OF SYMBOLS

CONTROLLER AND SERVICE EQUIP. NO's	⊙
SIGNAL BASE NO.	⊙
SIGNAL FACE NO.	⊙
LUMINAIRE NO.	⊙
CONTROLLER AND CABINET	⊙
CONTROLLER AND CABINET - IN PLACE	⊙
HANDHOLE	⊙
HANDHOLE - IN PLACE	⊙
RIGID STEEL CONDUIT (RSC)	—
RIGID STEEL CONDUIT (RSC) - IN PLACE	—
SIGNAL FACE WITH BACKGROUND SHIELD	→
SIGNAL FACE W/O BACKGROUND SHIELD	→
SIGNAL FACE - IN PLACE	→
PEDESTRIAN INDICATORS	→
PEDESTRIAN INDICATORS - IN PLACE	→
PEDESTRIAN PUSH BUTTONS ON PEDESTAL OR POLE	⊙
PEDESTRIAN PUSH BUTTON STATION	⊙
TRAFFIC SIGNAL PEDESTAL	⊙
TRAFFIC SIGNAL PEDESTAL - INPLACE	⊙
TRAFFIC SIGNAL POLE AND MAST ARM	⊙
TRAFFIC SIGNAL POLE AND MAST ARM - IN PLACE	⊙
STREET LIGHT POLE AND LUMINAIRE	⊙
STREET LIGHT POLE AND LUMINAIRE - IN PLACE	⊙
MAST ARM AND LUMINAIRE	⊙
MAST ARM AND LUMINAIRE - INPLACE	⊙
WOOD POLE	⊙
WOOD POLE - IN PLACE	⊙
SOURCE OF POWER	⊙
RAILROAD SIGNAL - IN PLACE	⊙
RIGHT OF WAY LINE	—
CENTERLINE	—
EDGE OF ROADWAY	—
SHOULDERLINE	—
CURB LINE	—
STOP BAR	—

ABBREVIATIONS

3-1(EG)	SIGNAL HEAD PHASE "3" - NO. "1"	O	ORANGE
BL	BLUE	O/BLK	ORANGE WITH BLACK TRACER
BL/BLK	BLUE WITH BLACK TRACER	P1-(EG)	PEDESTRIAN INDICATION PHASE "2"-NO. "1"
BLK	BLACK	PB	PUSH BUTTON
BLK/WH	BLACK WITH WHITE TRACER	PB-2(EG)	PUSH BUTTON PHASE "2"-NO. "1"
BR. GR.	BARE GROUND	PEC	PHOTOELECTRIC CELL
CH. SW.	CHECK SWITCH	PED	PEDESTRIAN
CLR	CLEAR	R	RED
D2-1(EG)	DETECTOR PHASE "2" - NO. "1"	R&S	REMOVE AND SALVAGE
DWK	DON'T WALK	R/BLK	RED WITH BLACK TRACER
EOG	EQUIPMENT GROUND	RLTA	RED LEFT TURN ARROW
EVP	EMERGENCY VEHICLE PRE-EMPTION	RRTA	RED RIGHT TURN ARROW
F&I	FURNISH AND INSTALL	RSC	RIGID STEEL CONDUIT
FL	FLASH/FLASHING	SOP	SOURCE OF POWER
GREEN	GREEN	SPR	SPARE
G/BLK	GREEN WITH BLACK TRACER	ST. LHT.	STREET LIGHT
GLTA	GREEN LEFT TURN ARROW	STA	STATION
GRN	GREEN	SW	SWITCH
GR. R.	GROUND ROD	SWD	SWITCHED
GRTA	GREEN RIGHT TURN ARROW	TDW	TELEPHONE DROP WIRE
GTHA	GREEN THRU ARROW	WH	WHITE
HH	HANDHOLE	WH/BLK	WHITE WITH BLACK TRACER
HPS	HIGH PRESSURE SODIUM	WLK	WALK
JB	JUNCTION BOX	YEL	YELLOW
LUM	LUMINAIRE	YLTA	YELLOW LEFT TURN ARROW
NEU	NEUTRAL	YRTA	YELLOW RIGHT TURN ARROW
NMC	NONMETALLIC CONDUIT	YTHA	YELLOW THRU ARROW

I HEREBY CERTIFY THAT THE PLAN, SPECIFICATIONS OR REPORT WAS PREPARED BY ME OR UNDER MY CLOSE PERSONAL SUPERVISION AND THAT I AM A DULY LICENSED PROFESSIONAL ENGINEER UNDER THE LAWS OF THE STATE OF MINNESOTA.

Ronald B. Gray
RONALD B. GRAY
DATE: 01/20/94

MISC. DETAILS
C.S.A.H. 8 (OSBORNE RDI) AND
THE UNITY HOSPITAL ENTRANCE
C.P. 93-26-08
FRIDLEY, MINNESOTA

Ort
Schelen
Mayeron &
Associates, Inc.
Engineers & Architects - Planners & Surveyors
300 Park Place Center - 5775 Wayzata Boulevard
Minneapolis, MN 55416-1228 - 612-996-3775