

CONVENTIONAL SYMBOLS

- Section Line _____
- Quarter Line _____
- Sixteenth Line _____
- Property Line _____
- R/W Boundary R/W _____
- Existing D.O.T. R/W Line _____
- And Other Road R/W's _____
- Railroad R/W _____
- Private Easement _____
- Temporary Easement T.E. _____
- Building Removal Easement B.R.E. _____
- R/W Parcel Number 37 _____
- Access Control _____
- Access Opening _____
- Cast Iron Monument or 2"x2" D.O.T. Iron Pipe with Aluminum Cap _____
- 3/4" D.O.T. Iron Pin _____
- Other Iron Monument _____
- Concrete or Stone Monument _____
- R/W Boundary Corner _____

UTILITY SYMBOLS

- POWER POLE LINE _____
- TELEPHONE OR TELEGRAPH POLE LINE _____
- JOINT TELEPHONE AND POWER ON POWER POLE _____
- ON TELEPHONE POLES _____
- ANCHOR _____
- STREET LIGHT _____
- PEDESTAL (TELEPHONE CABLE TERMINAL) _____
- GAS MAIN _____
- WATER MAIN _____
- CONDUIT _____
- TELEPHONE CABLE IN CONDUIT _____
- ELECTRIC CABLE IN CONDUIT _____
- TELEPHONE MANHOLE _____
- ELECTRIC MANHOLE _____
- BURIED TELEPHONE CABLE _____
- BURIED ELECTRIC CABLE _____
- AERIAL TELEPHONE CABLE _____
- SEWER (SANITARY OR STORM) _____
- SEWER MANHOLE _____

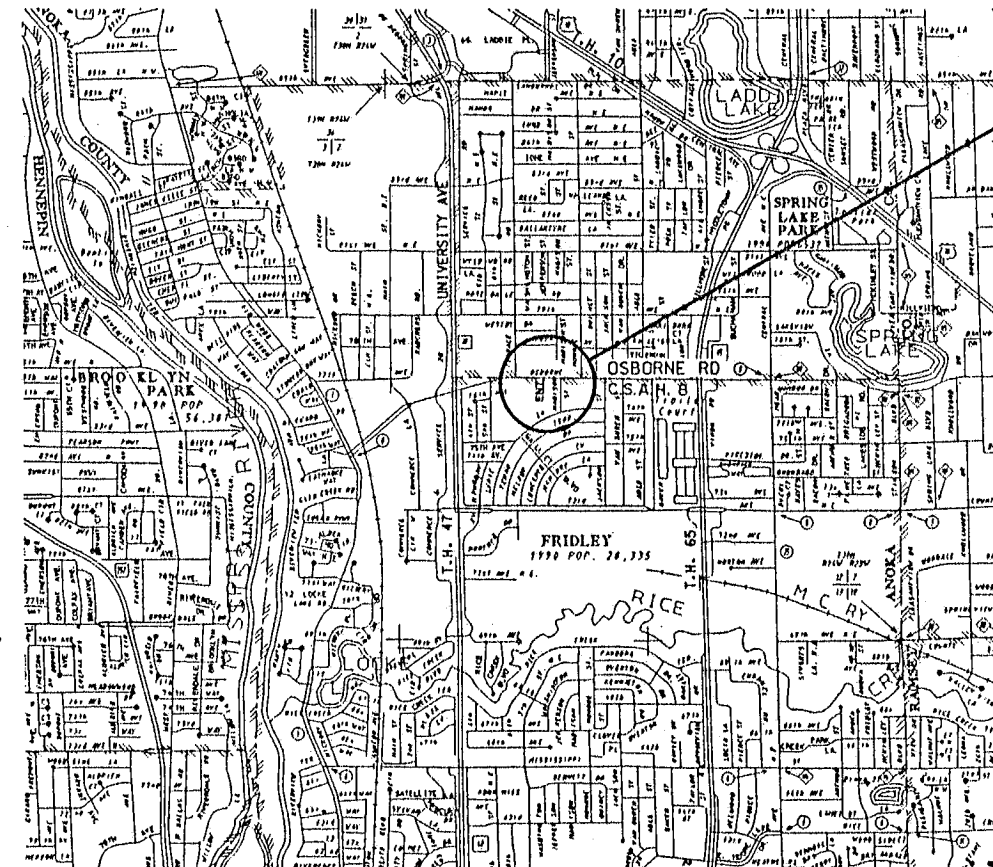
CONSTRUCTION OF FULL TRAFFIC ACTUATED TRAFFIC CONTROL SIGNAL SYSTEM IN THE CITY OF FRIDLEY, ANOKA COUNTY, MINNESOTA AT C.S.A.H.8 AND THE UNITY HOSPITAL ENTRANCE

SYMBOLS

- - EOG CONNECTION
- - E.V.P DETECTOR DIRECTION
- △ - LUMINAIRE NO.
- ③ - SIGNAL BASE NO.
- ④ - SIGNAL FACE NO.
- - SPLICE

INDEX

PAGE	DESCRIPTION
1	TITLE SHEET
2	UTILITY LOCATIONS AND SIGNS
3	INTERSECTION LAYOUT
4	WIRING DIAGRAM
5	SERVICE EQUIPMENT PAD AND CONTROLLER PAD DETAILS
6	MISC. DETAILS & STANDARD PLATES



PROJECT LOCATION
C.P. 93-26-08, S.A.P. 127-020-12
C.S.A.H. 8 AND
THE UNITY HOSPITAL ENTRANCE

ANOKA COUNTY HIGHWAY DEPARTMENT

SPECIFICATIONS

THE 1988 EDITION OF THE MINNESOTA DEPARTMENT OF TRANSPORTATION "STANDARD SPECIFICATIONS FOR CONSTRUCTION" AS AMENDED BY THE JANUARY 2, 1991 SUPPLEMENTAL SPECIFICATION SHALL GOVERN.

- Approved [Signature] DATE Feb 3 94
CITY OF FRIDLEY ENGINEER
- Approved [Signature] DATE 2/7/94
ANOKA COUNTY ENGINEER
- Recommended for Approval [Signature] DATE 3/25 94
METRO ASSISTANT DIVISION ENGINEER
- Recommended for Approval [Signature] DATE 3-30 94
STATE AID PLANS AND SPECS ENGINEER
- Approved [Signature] DATE 3/30 94
STATE AID ENGINEER

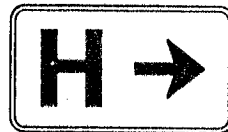
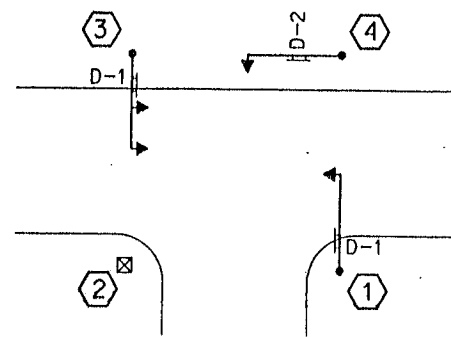
DESIGN DESIGNATION	
CSAH 8 (OSBORNE RD) C.P. 93-26-08	
R _____ NA _____	EN18 (20) _____ NA _____
ADT (Current Year) 1994 = 13,306	Design Speed 35 MPH
ADT (Future Year) 2014 = 22,620	Based on NA Sight Distance
DHV (Design Hr. Vol.) = NA	Height of eye NA Height of object NA
D (Directional Distr.) = 50/50%	Design Speed not achieved at: NA
T (Heavy Commercial) = NA %	Functional Classification Arterial-High Density
SOIL FACTOR _____ NA _____	No. of Traffic Lanes 2
	No. of Parking Lanes 2
	Ton Design NA

ESTIMATED QUANTITIES			
ITEM NO.		UNIT	TOTAL
2565.511	FULL TRAFFIC ACTUATED TRAFFIC CONTROL SIGNAL SYSTEM	SIGNAL SYSTEM	1 *
0565.601	EMERGENCY VEHICLE PREEMPTION SYSTEM	LUMP SUM	1 **

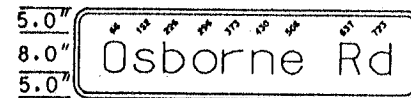
* - FUNDING SPLIT: 100% C.P. 93-26-08 (COUNTY LOCAL FUNDS)
** - FUNDING SPLIT: 66% S.A.P. 127-020-12 34% CITY LOCAL FUNDS

REVISION NO. _____ DATE _____
 SCALE: AS NOTED
 PLAN BY: _____
 CHECKED BY: _____
 DESIGNED BY: _____
 DRAWN BY: _____
 DATE: 01/20/94
 18327
 TITLE SHEET
 C.S.A.H. 8 (OSBORNE RD) AND
 THE UNITY HOSPITAL ENTRANCE
 C.P. 93-26-08
 FRIDLEY, MINNESOTA
 Orr Schelen
 Schelen
 Meyer &
 Associates, Inc.
 Engineers & Planners & Surveyors
 300 Park Place Center # 575
 Fridley, Minnesota
 Minneapolis, MN 55418-1228 • 612-985-3773

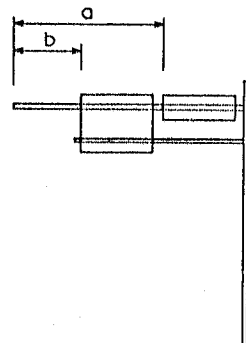
SIGN PANEL LAYOUT



60" X 30" D-1
D9-2B STANDARD SIGN - WHITE ON BLUE



84" X 18", 3" R. 1.0" B. D-2
LINE 1 70.79 : 8"-6" E MOD



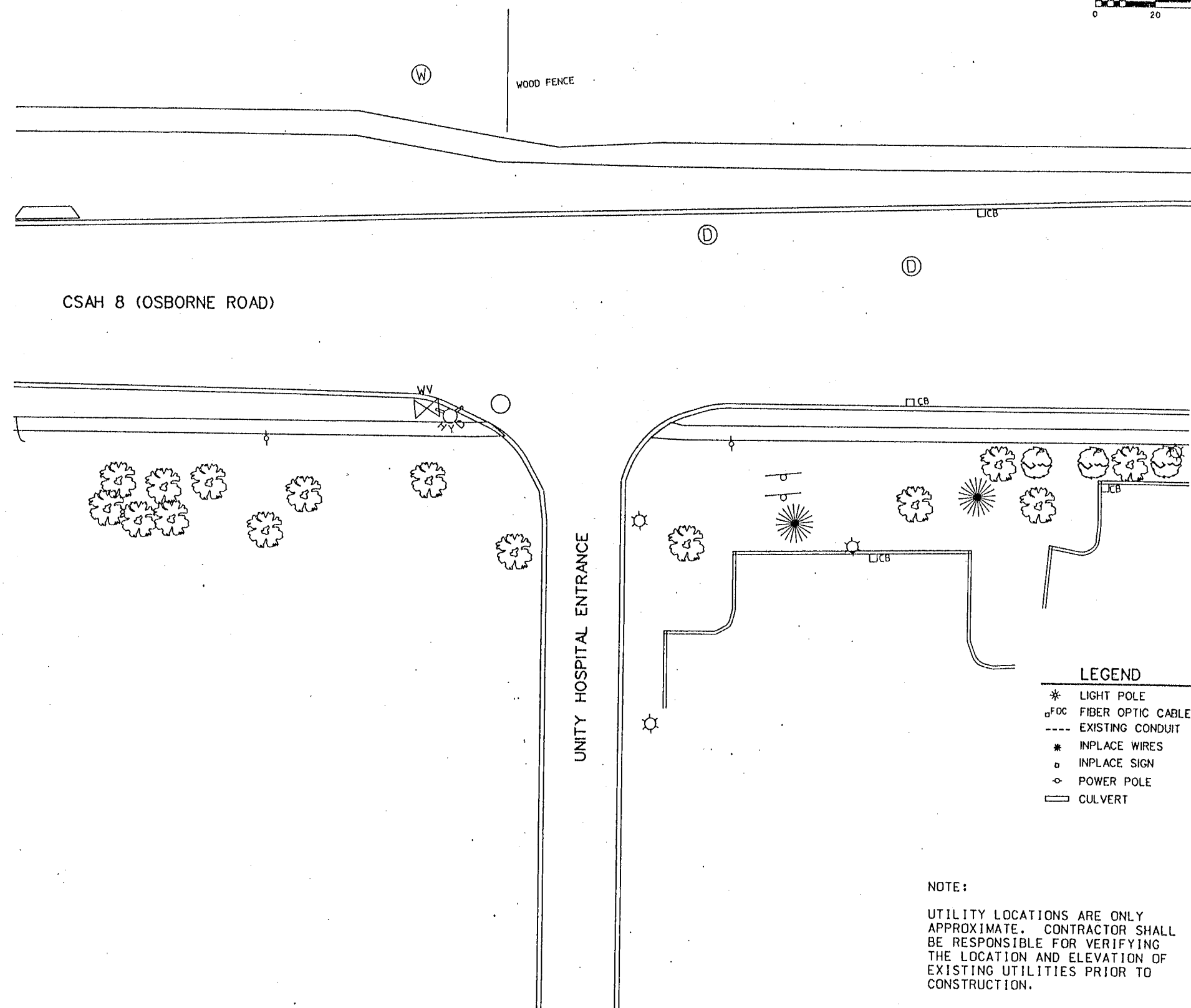
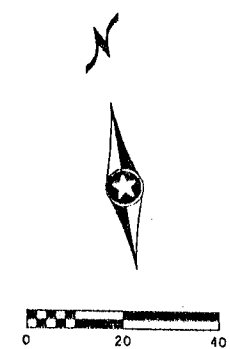
TYPE D SIGNS

Sign Panel	Size	No. Req.	No. Posts per Sign	Post Spacing	Sq. Ft. per Sign	Pole No.	Location on Mastarm ①	
							a	b
D-1	60"x30"	2	3	45"	12.5	1	22	
D-2	84"x18"	1	3	45"	10.5	4	5	

① SEE DETAIL

GENERAL NOTES

1. Color - White legend and border on green background, fully reflectorized.
2. Corners extending beyond the border shall not be trimmed.
3. See Standard Signs Manual for arrow and overlay details.
4. For structural details, Type D Signs, see Standard Signs Manual, page 105A & B.
5. For type D Stringer and panel - Joint Detail, see Standard Signs Manual.



- LEGEND
- * LIGHT POLE
 - FOC FIBER OPTIC CABLE
 - EXISTING CONDUIT
 - * INPLACE WIRES
 - INPLACE SIGN
 - ◇ POWER POLE
 - ▭ CULVERT

NOTE:
UTILITY LOCATIONS ARE ONLY APPROXIMATE. CONTRACTOR SHALL BE RESPONSIBLE FOR VERIFYING THE LOCATION AND ELEVATION OF EXISTING UTILITIES PRIOR TO CONSTRUCTION.

	REVISION NO. DATE	EXPLANATION
SCALE: AS NOTED	DESIGN BY: CTR	
PLAN BY: RB	CHECKED BY: RB	COMM. NO.: 511405
	DESIGN BY: RB	RECORD COPY BY: DATE
I HEREBY CERTIFY THAT THIS PLAN SPECIFICATION OR REPORT WAS PREPARED BY ME OR UNDER MY DIRECT SUPERVISION AND THAT I AM A DULY REGISTERED PROFESSIONAL ENGINEER UNDER THE LAWS OF THE STATE OF MINNESOTA. Ronald S. Bray RONALD S. BRAY APR. 01/20/94 REG. NO. 18327		
SIGNING AND UTILITIES SHEET C.S.A.H. 8 (OSBORNE RD) AND THE UNITY HOSPITAL ENTRANCE C.P. 98-26-08 FRIDLEY, MINNESOTA		
Orr Schelen & Mayeron & Associates, Inc. Engineers & Architects - Planners & Surveyors 300 Park Place Center - 575 Wayzata Boulevard Minneapolis, MN 55416-1228 - 612-596-5775		
PLAN NO.	2	

LOOP DETECTORS			
NUMBER	SIZE	FUNCTION	LOCATION
D1-1	2-6' X 6'	10/11	20' & 50'
D1-2	2-6' X 6'	10/11	5' & 35'
D2-1	6' X 6'	1	260'
D2-2	6' X 6'	1	260'
D6-1	6' X 6'	1	260'
D6-2	6' X 6'	1	260'
D8-1	6' X 6'	3/8	120'
D8-2	6' X 6'	3/8	120'
D8-3	2-6' X 6'	7	5'
D8-4	2-6' X 6'	1	5'

LOCATION-DISTANCE FROM STOP LINE TO DETECTOR

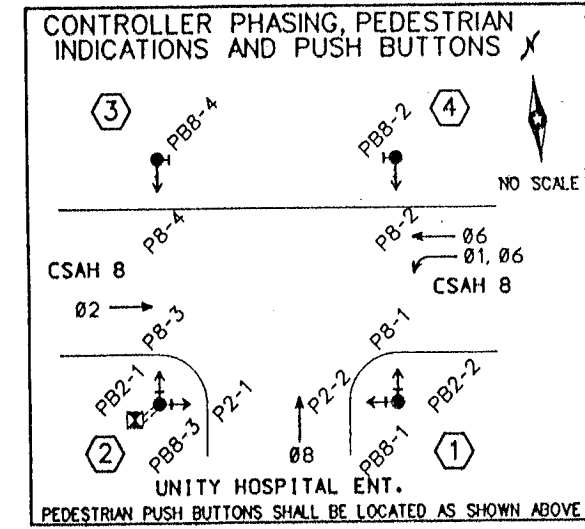
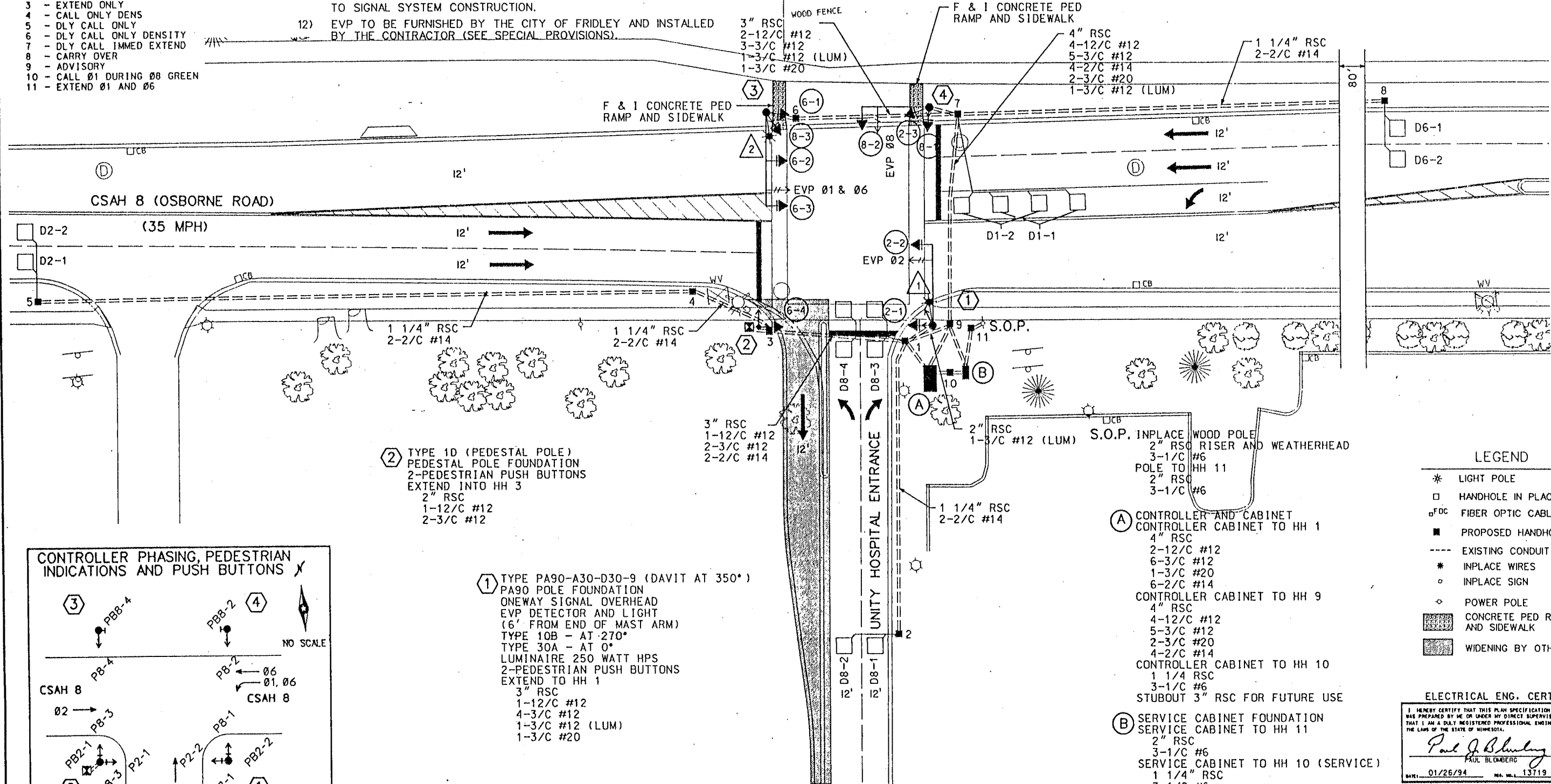
- FUNCTIONS:
- 1 - CALL AND EXTEND
 - 2 - CALL ONLY
 - 3 - EXTEND ONLY
 - 4 - CALL ONLY DENS
 - 5 - DLY CALL ONLY
 - 6 - DLY CALL ONLY DENSITY
 - 7 - DLY CALL IMMEDIATE EXTEND
 - 8 - CARRY OVER
 - 9 - ADVISORY
 - 10 - CALL Ø1 DURING ØØ GREEN
 - 11 - EXTEND Ø1 AND Ø6

NOTES:

- 1) SEE SPECIAL PROVISIONS FOR COUNTY FURNISHED MATERIALS.
- 2) EACH SIGNAL FACE SHALL HAVE A BACKGROUND SHIELD.
- 3) EACH LUMINAIRE SHALL HAVE A PEC AND CHECK SWITCH.
- 4) SEE SHEET NO. 5 AND SPECIAL PROVISIONS FOR SERVICE CABINET DETAILS.
- 5) DIRECTIONAL SIGNS (TYPE D) TO BE FURNISHED AND INSTALLED ON MAST ARMS AT POLES 1, 3 AND 4 AND SHALL BE CONSIDERED INCIDENTAL.
- 6) SEE SPECIAL PROVISIONS FOR HANDHOLE TYPE.
- 7) SEE SPECIAL PROVISIONS FOR CONTRACTORS RESPONSIBILITY FOR LOCATION OF UTILITIES.
- 8) ALL PEDESTRIAN INDICATIONS SHALL BE 12" X 12".
- 9) ALL SIGNAL FACES SHALL BE 12 INCH 3 SECTION R-Y-G, EXCEPT FACES (6-3) (6-4) WHICH SHALL BE 12 INCH 5 SECTION R-Y-G-YLTA-GLTA.
- 10) ALL VEHICLE SIGNAL INDICATIONS SHALL USE GLASS LENSES.
- 11) CONCRETE PED RAMP AND SIDEWALKS SHALL BE CONSTRUCTED AT LOCATIONS SHOWN ON PLAN AND SHALL BE CONSIDERED INCIDENTAL TO SIGNAL SYSTEM CONSTRUCTION.
- 12) EVP TO BE FURNISHED BY THE CITY OF FRIDLEY AND INSTALLED BY THE CONTRACTOR (SEE SPECIAL PROVISIONS).

③ TYPE PA90-A35-D30-9 (DAVIT AT 350°)
 PA90 POLE FOUNDATION
 2-ONEWAY SIGNALS OVERHEAD
 (0' AND 18' FROM END OF MAST ARM)
 R10-12 (24x30) MOUNTED 3' FROM END OF MAST ARM
 ONEWAY EVP DETECTOR AND LIGHT
 (6' FROM END OF MASTARM)
 TYPE 10B - AT 0°
 TYPE 10A - AT 270°
 LUMINAIRE 250 WATT HPS
 1-PEDESTRIAN PUSH BUTTON
 EXTEND TO HH 6
 3" RSC
 2-12/C #12
 3-3/C #12
 1-3/C #12 (LUM)
 1-3/C #20

④ TYPE PA90-A25
 PA90 POLE FOUNDATION
 ONEWAY SIGNAL OVERHEAD
 ONEWAY EVP DETECTOR AND LIGHT
 (6' FROM END OF MASTARM)
 TYPE 10A - AT 0°
 TYPE 10B - AT 270°
 1-PEDESTRIAN PUSH BUTTON
 EXTEND INTO HH 7
 3" RSC
 2-12/C #12
 2-3/C #12
 1-3/C #20



② TYPE 1D (PEDESTAL POLE)
 PEDESTAL POLE FOUNDATION
 2-PEDESTRIAN PUSH BUTTONS
 EXTEND INTO HH 3
 2" RSC
 1-12/C #12
 2-3/C #12

① TYPE PA90-A30-D30-9 (DAVIT AT 350°)
 PA90 POLE FOUNDATION
 ONEWAY SIGNAL OVERHEAD
 EVP DETECTOR AND LIGHT
 (6' FROM END OF MAST ARM)
 TYPE 10B - AT 270°
 TYPE 30A - AT 0°
 LUMINAIRE 250 WATT HPS
 2-PEDESTRIAN PUSH BUTTONS
 EXTEND TO HH 1
 3" RSC
 1-12/C #12
 4-3/C #12
 1-3/C #12 (LUM)
 1-3/C #20

Ⓐ CONTROLLER AND CABINET
 CONTROLLER CABINET TO HH 1
 4" RSC
 2-12/C #12
 6-3/C #12
 1-3/C #20
 6-2/C #14
 CONTROLLER CABINET TO HH 9
 4" RSC
 4-12/C #12
 5-3/C #12
 2-3/C #20
 4-2/C #14
 CONTROLLER CABINET TO HH 10
 1 1/4" RSC
 3-1/C #6
 STUBOUT 3" RSC FOR FUTURE USE

Ⓑ SERVICE CABINET FOUNDATION
 SERVICE CABINET TO HH 11
 2" RSC
 3-1/C #6
 SERVICE CABINET TO HH 10 (SERVICE)
 1 1/4" RSC
 3-1/C #6
 SERVICE CABINET TO HH 9 (LIGHTING)
 1 1/4" RSC
 2-3/C #12 (LUM)

- LEGEND
- * LIGHT POLE
 - HANDHOLE IN PLACE
 - o FOC FIBER OPTIC CABLE
 - PROPOSED HANDHOLE
 - EXISTING CONDUIT
 - * INPLACE WIRES
 - o INPLACE SIGN
 - o POWER POLE
 - CONCRETE PED RAMP AND SIDEWALK
 - WIDENING BY OTHERS

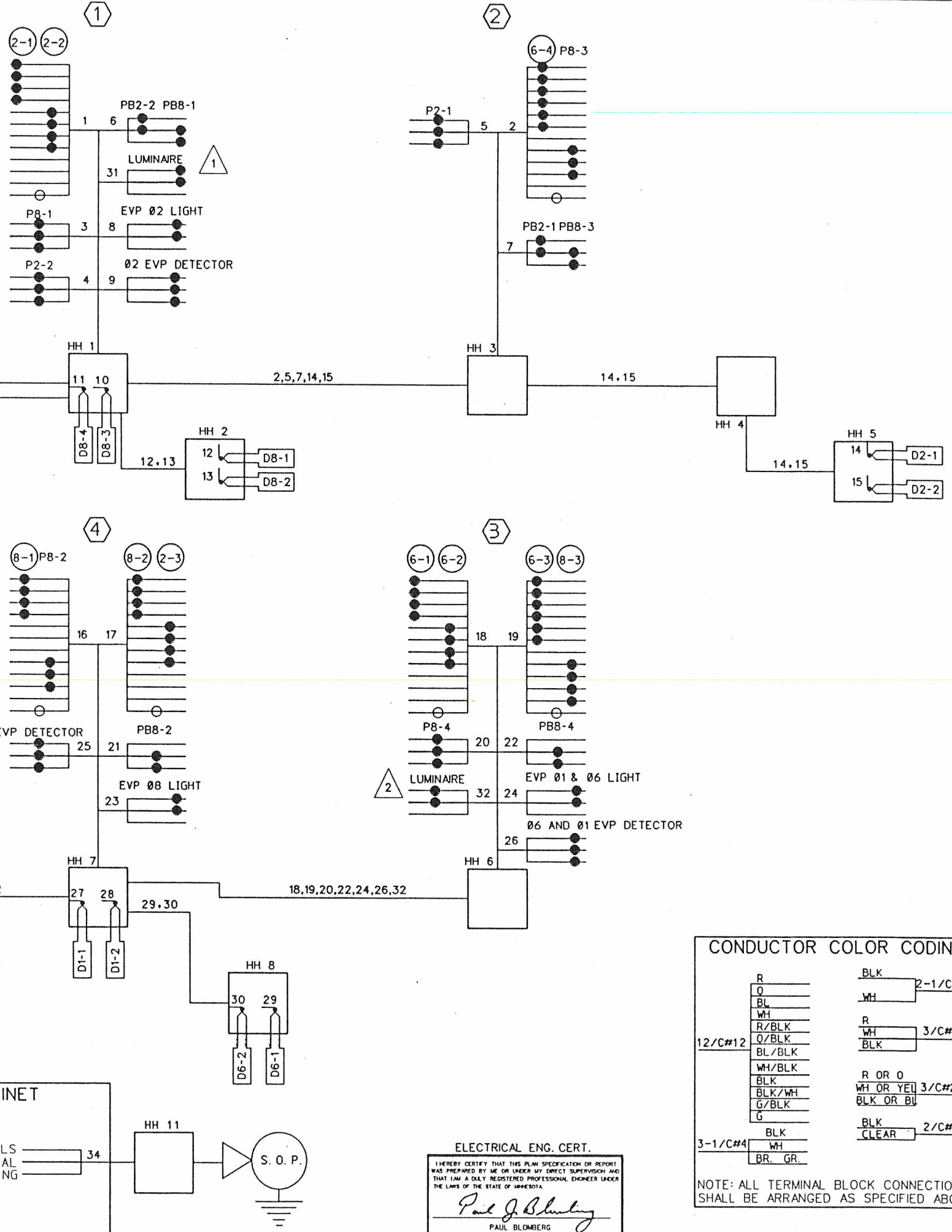
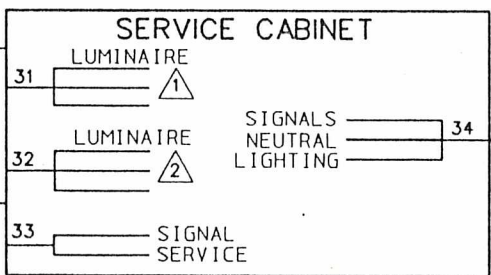
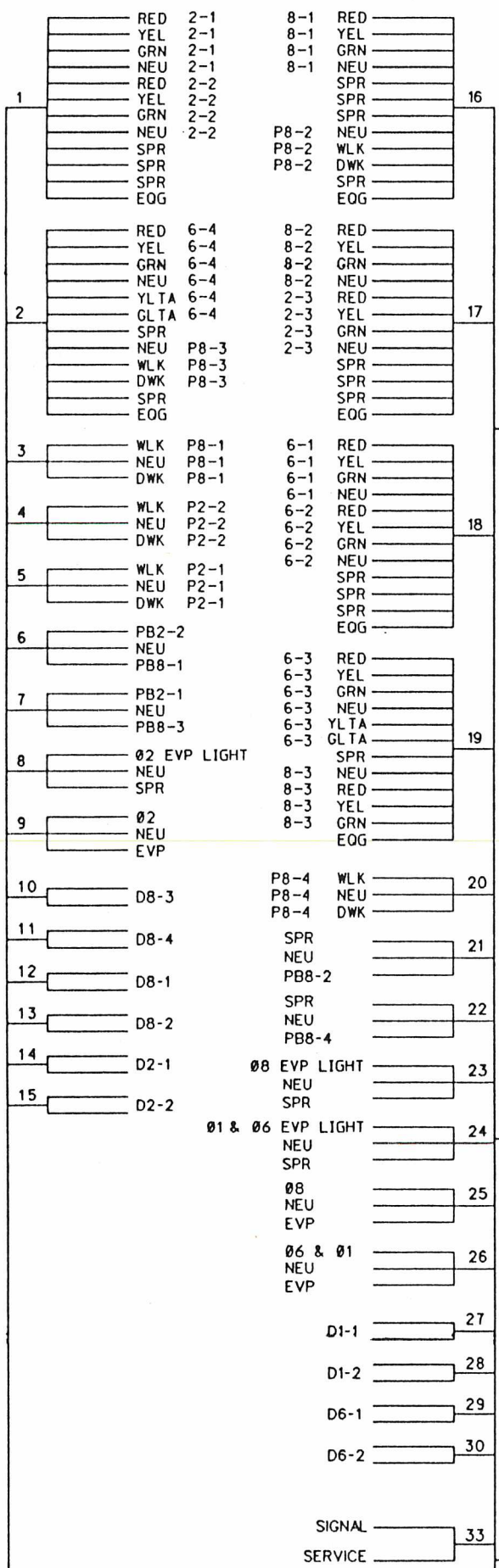
ELECTRICAL ENG. CERT.
 I HEREBY CERTIFY THAT THIS PLAN SPECIFICATION OR REPORT WAS PREPARED BY ME OR UNDER MY DIRECT SUPERVISION AND THAT I AM A DULY REGISTERED PROFESSIONAL ENGINEER UNDER THE LAWS OF THE STATE OF MINNESOTA.
Paul J. Blumberg
 PAUL BLUMBERG
 DATE: 01/26/94 REG. NO.: 13719

INTERSECTION LAYOUT
 C.S.A.H. 8 (OSBORNE RD) AND
 THE UNITY HOSPITAL ENTRANCE
 FRIDLEY, MINNESOTA

CSM
 Ori Schelen
 Schelen
 Mayeron &
 Associates, Inc.
 Engineers & Architects • Planners • Surveyors
 300 Park Place Center # 5775 • Fridley, Minnesota
 Minneapolis, MN 55415-1228 • 612-566-5775

PLAN NO. 3

CONTROLLER CABINET



CONDUCTOR COLOR CODING

R	BLK	2-1/C#10
O	WH	2-1/C#10
BL	R	3/C#12
WH	WH	3/C#12
R/BLK	BLK	3/C#12
O/BLK	R OR O	WH OR YEL 3/C#20
BL/BLK	BLK/WH	BLK OR BL
WH/BLK	G/BLK	BLK
BLK	G	CLEAR
BLK/WH	BLK	2/C#14
G/BLK	WH	
G	BR. GR.	

ELECTRICAL ENG. CERT.
 I HEREBY CERTIFY THAT THIS PLAN, SPECIFICATION OR REPORT WAS PREPARED BY ME OR UNDER MY DIRECT SUPERVISION AND THAT I AM A DAILY REGISTERED PROFESSIONAL ENGINEER UNDER THE LAWS OF THE STATE OF MINNESOTA.
Paul J. Blomberg
 PAUL BLOMBERG
 DATE: 01/26/94 REG. NO.: 13719

NOTE: ALL TERMINAL BLOCK CONNECTIONS SHALL BE ARRANGED AS SPECIFIED ABOVE

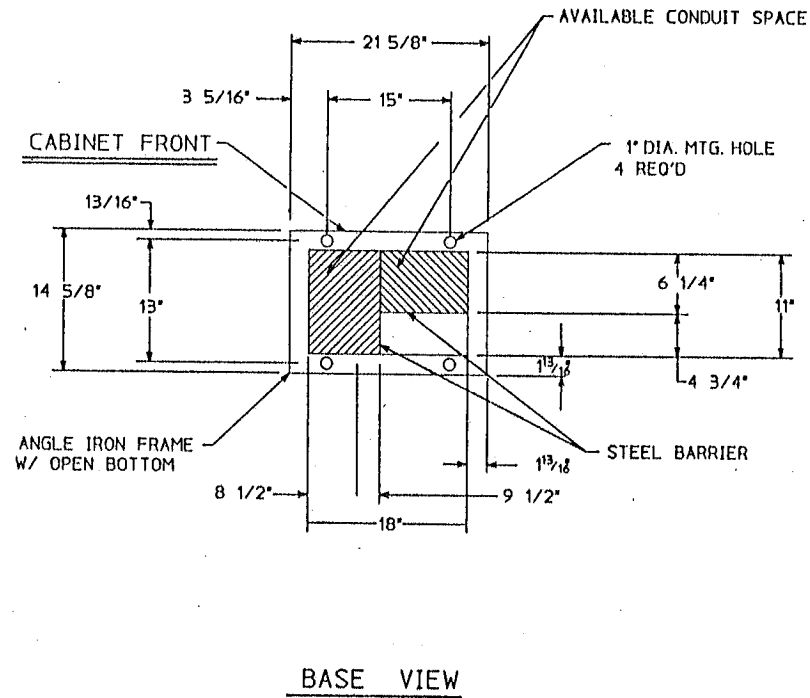
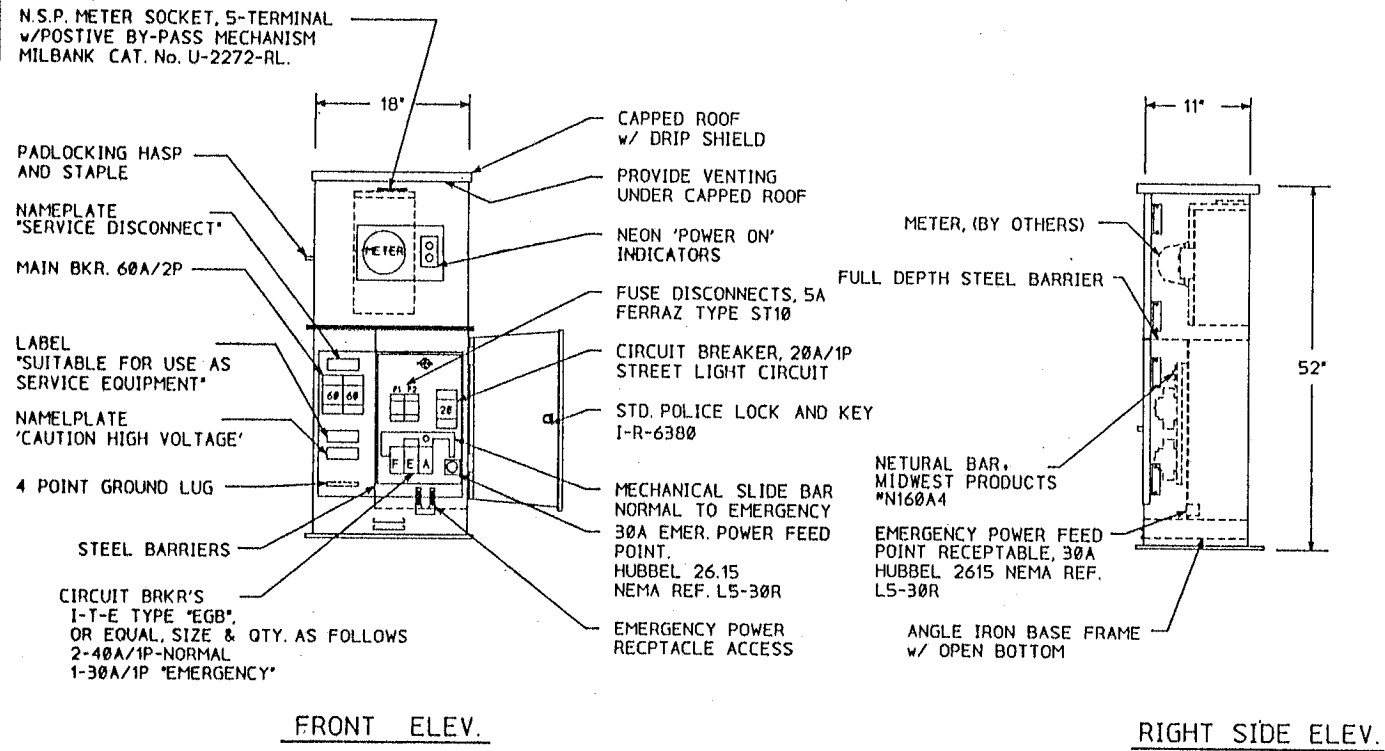
OFFICE: Schelen & Mayerson Associates, Inc.
 Engineers - Architects - Planners - Surveyors
 300 Park Place Center # 5750 Kayata Boulevard
 Minneapolis, MN 55416-1228 Tel: 612-945-3770

WIRING DIAGRAM
 C.S.A.H. 8 (OSBORNE RD) AND
 THE UNITY HOSPITAL ENTRANCE
 C.P. 93-26-08
 FRIDLEY, MINNESOTA

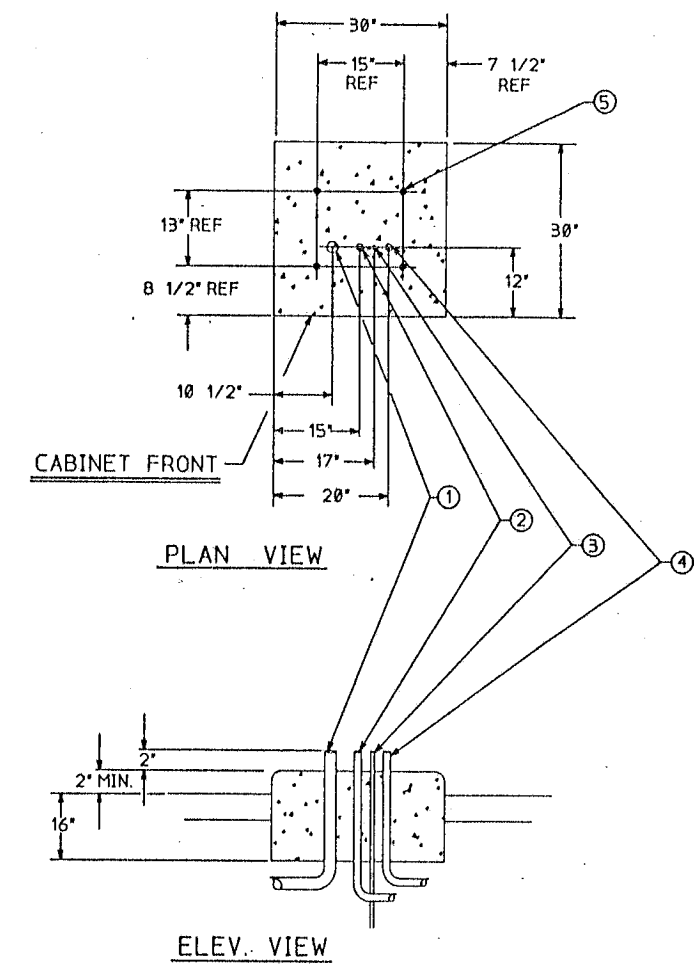
REVISION NO. DATE
 AS NOTED
 SCALE: PLAN BY: DESIGN BY: CTR
 CHECKED BY: COMAND: 511405
 RECORD COPY BY: DATE
 RONALD B. BRAY
 01/26/94 REG. NO.: 19327

PLAN NO. 4

SIGNAL SERVICE CABINET



SERVICE CABINET FOUNDATION

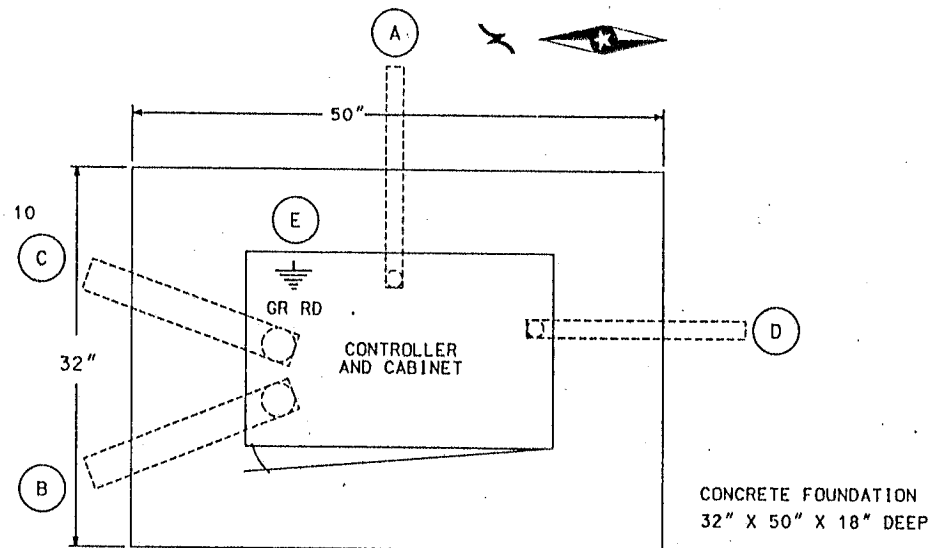


- ① 2" RSC FROM SOURCE OF POWER (VIA HANDHOLE 11)
- ② 1 1/4" RSC TO CONTROLLER CABINET (VIA HANDHOLE 10)
- ③ GROUNDING ROD
- ④ 1 1/4" RSC TO HANDHOLE 9 (STREET LIGHTING)
- ⑤ ANCHOR BOLT LOCATIONS (4 REQUIRED)

CONSTRUCTION NOTES

ENCLOSURE SHALL BE FABRICATED FROM #12 GA. ALL WELDED COLD ROLLED STEEL FOR OUTDOOR WEATHER PROOF SERVICE. DOORS TO BE GASKETED, ALL HINGES, PINS AND LOCKS TO BE OF NON CORRODING CONSTRUCTION. CABINET TO BE PRIMED INSIDE AND OUT WITH RUST INHIBITTING PRIMER. FINISH PER MN/DOT #3527

- (A) 1 1/4" R.S.C. FOR SERVICE CONNECTION TO HH 10
- (B) 4" R.S.C. TO HH 1
- (C) 4" R.S.C. TO HH 9
- (D) 3" R.S.C. STUBOUT, THREAD AND CAP BOTH ENDS (FOR FUTURE USE)
- (E) 5/8" DIA X 15' GROUND ROD



SEE INTERSECTION LAYOUT FOR CONDUIT & CABLE INFORMATION

CONTROLLER CABINET PAD LAYOUT
NO SCALE

ELECTRICAL ENG. CERT.
I HEREBY CERTIFY THAT THIS PLAN SPECIFICATION OR REPORT WAS PREPARED BY ME OR UNDER MY DIRECT SUPERVISION AND THAT I AM A DULY REGISTERED PROFESSIONAL ENGINEER UNDER THE LAWS OF THE STATE OF MINNESOTA.
Paul J. Blomberg
PAUL BLOMBERG
DATE: 01/20/94 REG. NO.: 13719

REVISION NO. DATE

SCALE: AS NOTED

DESIGN BY: []

CHECKED BY: []

DATE: 01/20/94

REG. NO.: 13719

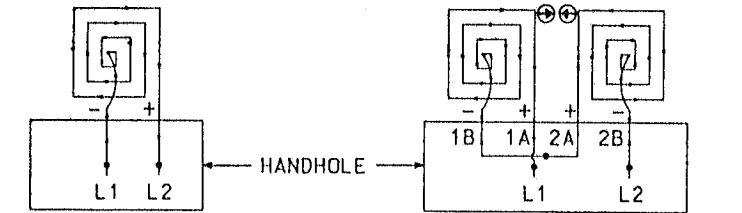
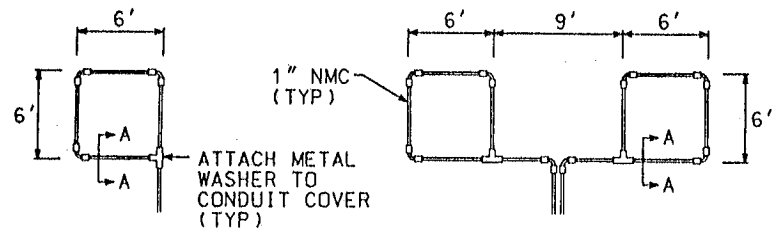
ENGINEER: Paul J. Blomberg

PROJECT: SERVICE EQUIP. AND CONTROLLER PAD C.S.A.H. 8 (OSBORNE RD) AND THE UNITY HOSPITAL ENTRANCE C.P. 93-26-08

LOCATION: FRIDLEY, MINNESOTA

ORR Schelen & Associates, Inc. Engineers - Architects - Planners - Surveyors 300 Park Place Center - 575 Wayzata Boulevard - Minneapolis, MN 55416-1228 - 612-996-5775

PLAN NO. 5

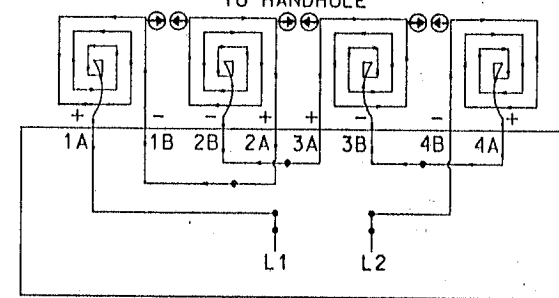
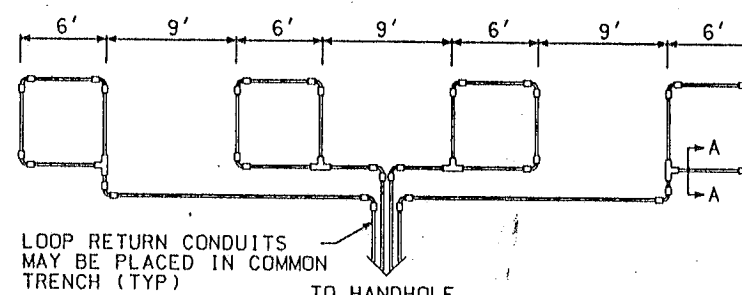


LOOP CONNECTIONS SHALL BE LABELED AND SPLICED IN THE HANDHOLE AS FOLLOWS:

L1 TO 1A
1B TO 2A
2B TO L2

LOOP DETECTOR
DETAIL 'A'
(LOOP PHASING FOR
SINGLE CONNECTION)

LOOP DETECTOR
DETAIL 'B'
(LOOP PHASING FOR
SERIES CONNECTION)

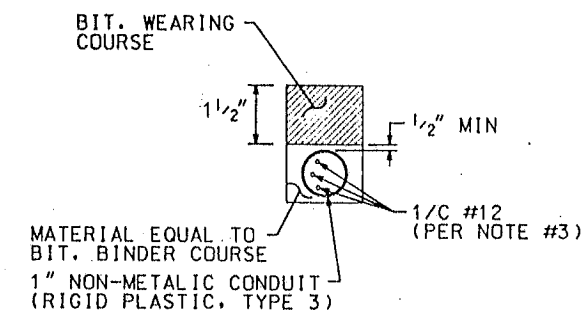


LOOP CONNECTIONS SHALL BE LABELED AND SPLICED IN THE HANDHOLE AS FOLLOWS:

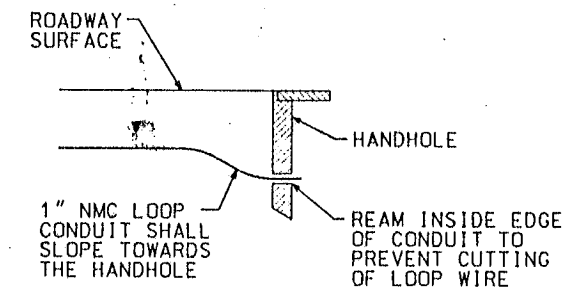
L1 TO 1A
1B TO 2A
2B TO 3A
3B TO 4A
4B TO L2

SPLICE CONTROL CABLE TO L1 & L2 IN HANDHOLE. ALL CONDUCTORS SHALL BE TAGGED IN HANDHOLE (1A, 1B, ECT)

LOOP DETECTOR
DETAIL 'C'
(LOOP PHASING FOR
SERIES CONNECTION)



SECTION A-A



DRAINAGE DETAIL

LOOP DETECTOR WIRING

- 1) ALL CORNERS SHALL BE 90° CONDUIT BENDS.
- 2) CONNECT WIRES IN HANDHOLES USING SPLICE KIT METHOD DESCRIBED IN THE SPECIAL PROVISIONS.
- 3) LOOP DETECTOR WIRES SHALL BE #12 AWG CROSSED LINKED POLYETHYLENE (XLP). SEE SPECIAL PROVISIONS.
- 4) LOOP LEAD IN WIRES SHALL BE TWISTED A MIN. OF (5) TURNS PER FOOT THROUGH THE CONDUIT TO THE HANDHOLE.
- 5) NMC DESIGNATES NON-METALLIC CONDUIT (SPEC. 3803)
- 6) LOOPS 6' x 6' THRU 6' x 14' SHALL HAVE (4) TURNS.
- 7) LOOPS 6' x 15' AND LARGER SHALL HAVE (2) TURNS.

STANDARD PLATES	
PLATE NO.	DESCRIPTION
* 8110 C	TRAFFIC SIGNAL BRACKETING - POLE MOUNTED
* 8111 B	TRAFFIC SIGNAL BRACKETING - PEDESTAL MOUNTED
* 8112 C	PEDESTAL FOUNDATION
8113 C	MAGNETIC VEHICLE DETECTOR INSTALLATION
* 8115 C	PEDESTRIAN PUSH BUTTON INSTALLATION
* 8117 F	PRECAST CONCRETE HANDHOLE
* 8118 C	SERVICE EQUIPMENT AND POLE
* 8119 C	GROUND MOUNTED CABINET FOUNDATION
* 8120 J	PA85 AND PA90 POLE FOUNDATION
* 8121 C	TRANSFORMER BASE AND POLE BASE PLATE
* 8122 C	PEDESTAL AND PEDESTAL BASE
* 8123 C	POLE AND MAST ARM
* 8124 D	MAST ARM SIGNAL HEAD MOUNTS
8126 E	PA100 POLE FOUNDATION
* 0005 A	SPECIFICATION REFERENCE TO STANDARD PLATES
3124 B	METAL APRON CONNECTION
3221 C	CORRUGATED STEEL PIPE COUPLING BAND
* 7035 J	CONCRETE WALK AND CURB RETURNS AT ENTRANCES
* 7100 F	CONCRETE CURB AND GUTTERS
* 7036 D	PEDESTRIAN CURB RAMP

* - APPLIES TO THIS PROJECT

LEGEND OF SYMBOLS

CONTROLLER AND SERVICE EQUIP. NO's	○
SIGNAL BASE NO.	①
SIGNAL FACE NO.	②
LUMINAIRE NO.	③
CONTROLLER AND CABINET	□
CONTROLLER AND CABINET - IN PLACE	■
HANDHOLE	□
HANDHOLE - IN PLACE	■
RIGID STEEL CONDUIT (RSC)	—
RIGID STEEL CONDUIT (RSC) - IN PLACE	—
SIGNAL FACE WITH BACKGROUND SHIELD	→
SIGNAL FACE W/O BACKGROUND SHIELD	→
SIGNAL FACE - IN PLACE	→
PEDESTRIAN INDICATORS	→
PEDESTRIAN INDICATORS - IN PLACE	→
PEDESTRIAN PUSH BUTTONS ON PEDESTAL OR POLE	○
PEDESTRIAN PUSH BUTTON STATION	○
TRAFFIC SIGNAL PEDESTAL	□
TRAFFIC SIGNAL PEDESTAL - INPLACE	□
TRAFFIC SIGNAL POLE AND MAST ARM	○
TRAFFIC SIGNAL POLE AND MAST ARM - IN PLACE	○
STREET LIGHT POLE AND LUMINAIRE	○
STREET LIGHT POLE AND LUMINAIRE - IN PLACE	○
MAST ARM AND LUMINAIRE	○
MAST ARM AND LUMINAIRE - INPLACE	○
WOOD POLE	○
WOOD POLE - IN PLACE	○
SOURCE OF POWER	○
RAILROAD SIGNAL - IN PLACE	⊞
RIGHT OF WAY LINE	—
CENTERLINE	—
EDGE OF ROADWAY	—
SHOULDERLINE	—
CURB LINE	—
STOP BAR	—

ABBREVIATIONS

3-1(EG)	SIGNAL HEAD PHASE "3" - NO. "1"	O	ORANGE
BL	BLUE	O/BLK	ORANGE WITH BLACK TRACER
BL/BLK	BLUE WITH BLACK TRACER	P1-(EG)	PEDESTRIAN INDICATION PHASE "2"-NO. "1"
BLK	BLACK	PB	PUSH BUTTON
BLK/WH	BLACK WITH WHITE TRACER	PB-2(EG)	PUSH BUTTON PHASE "2"-NO. "1"
BR. GR.	BARE GROUND	PEC	PHOTOELECTRIC CELL
CH. SW.	CHECK SWITCH	PED	PEDESTRIAN
CLR	CLEAR	R	RED
D2-1(EG)	DETECTOR PHASE "2" - NO. "1"	R&S	REMOVE AND SALVAGE
DWK	DON'T WALK	R/BLK	RED WITH BLACK TRACER
EQG	EQUIPMENT GROUND	RLTA	RED LEFT TURN ARROW
EVP	EMERGENCY VEHICLE PRE-EMPTION	RRTA	RED RIGHT TURN ARROW
F&I	FURNISH AND INSTALL	RSC	RIGID STEEL CONDUIT
FL	FLASH/FLASHING	SOP	SOURCE OF POWER
G	GREEN	SPR	SPARE
G/BLK	GREEN WITH BLACK TRACER	ST. LHT.	STREET LIGHT
GLTA	GREEN LEFT TURN ARROW	STA	STATION
GRN	GREEN	SW	SWITCH
GR. R.	GROUND ROD	SWD	SWITCHED
GRTA	GREEN RIGHT TURN ARROW	TDW	TELEPHONE DROP WIRE
GTHA	GREEN THRU ARROW	WH	WHITE
HH	HANDHOLE	WH/BLK	WHITE WITH BLACK TRACER
HPS	HIGH PRESSURE SODIUM	WLK	WALK
JB	JUNCTION BOX	YEL	YELLOW
LUM	LUMINAIRE	YLTA	YELLOW LEFT TURN ARROW
NEU	NEUTRAL	YRTA	YELLOW RIGHT TURN ARROW
NMC	NONMETALLIC CONDUIT	YTHA	YELLOW THRU ARROW

REVISION NO. _____ DATE _____

SCALE: AS NOTED

PLAN BY: CTR

CWK

CHECKED BY: RBB

RECORD COPY BY: _____ DATE _____

DESIGN BY: _____ DATE _____

COMING: 511405

DATE: 01/20/94

18327

FOR THE RECORD, THE DESIGNER'S BOOK NO. _____ AND THE DATE OF THE DESIGNER'S BOOK NO. _____ WAS PREPARED BY ME OR UNDER MY DIRECT SUPERVISION AND THAT I AM A DULY REGISTERED PROFESSIONAL ENGINEER UNDER THE LAWS OF THE STATE OF MINNESOTA.

Ronald S. Bray

RONALD S. BRAY

MISC. DETAILS
C.S.A.H. 8 (OSBORNE RD) AND
THE UNITY HOSPITAL ENTRANCE
C.P. 93-26-08
FRIDLEY, MINNESOTA

Ort Schelen
Mayeron &
Associates, Inc.
Engineers - Architects - Planners - Surveyors
300 Park Place Center # 5705, Veitola Boulevard
Minneapolis, MN 55415-1228 • 612-365-9773

PLAN NO