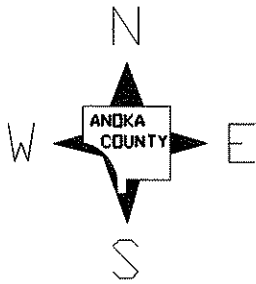


DEPARTMENT OF TRANSPORTATION
CONSTRUCTION PLAN FOR BRIDGE DECK BIT.
MILLING & OVERLAY



COUNTY ROAD NO. 116

From 50' W. OF W. END OF BRIDGE

To 50' E. OF E. END OF BRIDGE

From _____

To _____

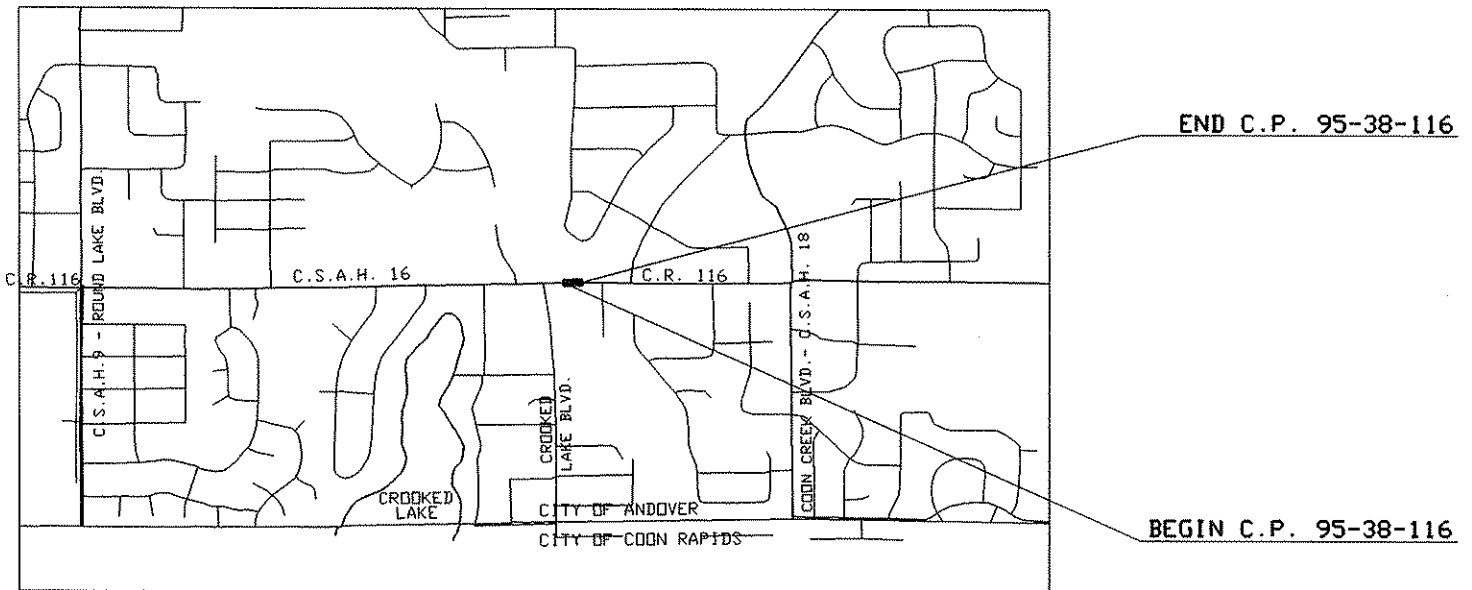
COUNTY PROJECT NO. 95-38-116

GROSS LENGTH 166.00 FEET 0.031 MILES

BRIDGES LENGTH 66.00 FEET 0.013 MILES

EXCEPTIONS LENGTH 0.00 FEET 0.000 MILES

NET LENGTH 166.00 FEET 0.031 MILES



DESIGN SPEED

ALL APPLICABLE FEDERAL, STATE AND LOCAL LAWS AND ORDINANCES WILL BE COMPLIED WITH IN THE CONSTRUCTION OF THIS PROJECT.

I HEREBY CERTIFY THAT THIS PLAN WAS PREPARED BY ME OR UNDER MY DIRECT SUPERVISION AND THAT I AM A DULY REGISTERED PROFESSIONAL ENGINEER UNDER THE LAWS OF THE STATE OF MINN.

GOVERNING SPECIFICATIONS

THE 1988 EDITION OF THE MINNESOTA DEPARTMENT OF TRANSPORTATION "STANDARD SPECIFICATIONS FOR CONSTRUCTION", AS AMENDED BY THE MAY 2, 1994 SUPPLEMENTAL SPECIFICATIONS, SHALL GOVERN.

[Signature] REG. NO. 20235 DATE 5/18/95
DESIGN ENGINEER

APPROVED 5/18/95 *[Signature]*
ANKA COUNTY ENGINEER

ITEM NO	ITEM	UNIT	TOTAL EST. QUANT
2232.501	MILL BITUMINOUS SURFACE	SQ YD	750
2340.508	TYPE 41 WEARING COURSE MIXTURE	TON	90
2340.514	TYPE 31 BASE COURSE MIXTURE	TON	90
2357.502	BITUMINOUS MATERIAL FOR TACK COAT	GALLON	38
2580.501	TEMPORARY LANE MARKING	RD STA	2

DESIGN DESIGNATIONS:

TYPE 41 WEAR: 41WEA50055Y
TYPE 31 BASE: 31BBB50000Y

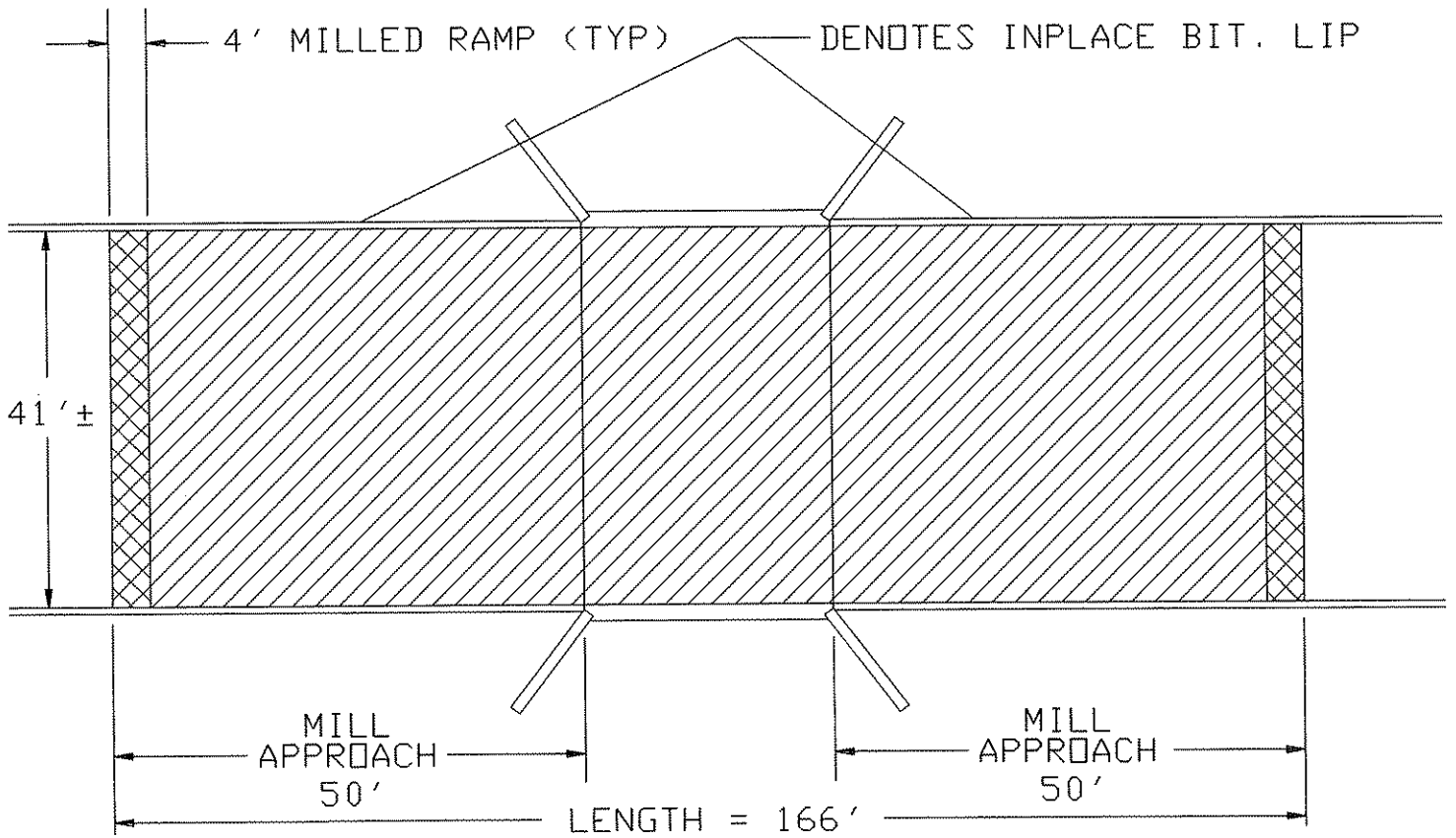
BASIS OF PLANNED QUANTITIES

2340 BITUMINOUS MIXTURE: 120 LBS./SQ.YD. PER 1" THICKNESS
2357 BITUMINOUS MATERIAL FOR TACK COAT: 0.05 GAL./SQ.YD.

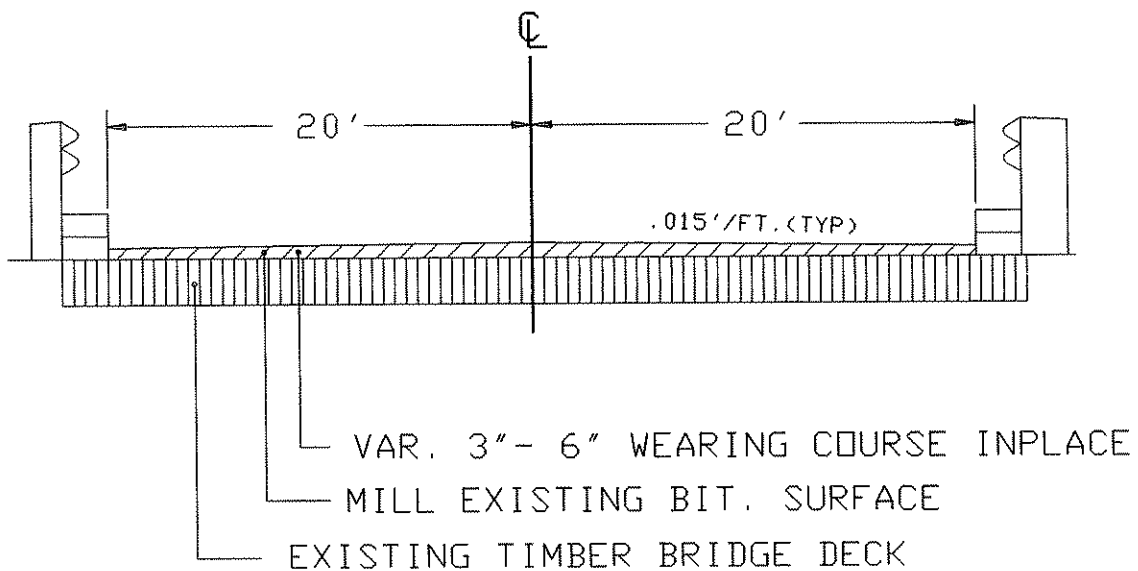
STANDARD DETAIL PLATES	
PLATE NO.	DESCRIPTION
0004 A	SPECIFICATION REFERENCE TO STANDARD PLATES
8000 I	STANDARD BARRICADES

BRIDGE DECK AND APPROACH DETAILS

PLAN DETAIL



TYPICAL SECTION

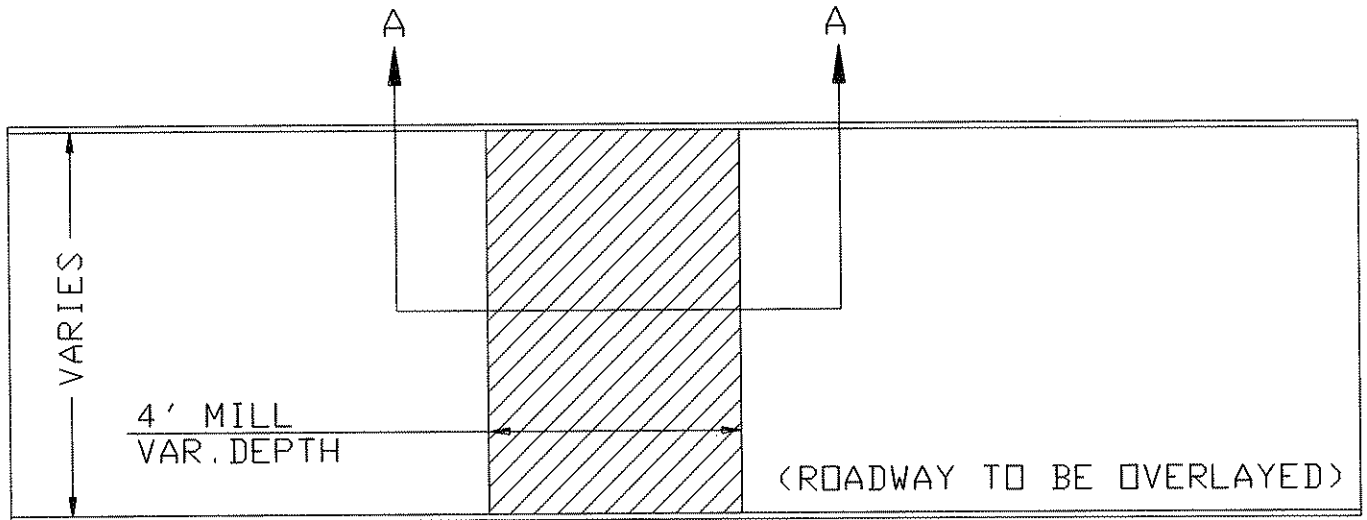


NOTE:

NOT TO SCALE

MILLING DETAILS

MILLED RAMP



SECTION A-A

