

1 PA90 POLE FOUNDATION
 TYPE PA90-A35-D40-9 (DAVIT AT 350°)
 LUM-200W/HPS WITH PEC & CHECK SWITCH
 2 - ONEWAY SIGNALS (OVERHEAD)
 MID MAST ARM MOUNT 11' FROM END
 ONE WAY EVP DETECTOR AND LIGHT (Ø2)
 2 - TYPE 10A POLE MOUNTED AT 180° & 270°
 R9-3A SIGN (18"x18") FACE **5**
 R10-6 SIGN (18"x24")

4 PEDESTAL FOUNDATION
 TYPE 1A
 R10-6 SIGN (18" x 24")
 R9-3A SIGN (18"x18") FACE **5**

EXTEND INTO HH 3
 3" RSC
 2 - 12/C #12
 1 - 3/C #12 (LUM)
 1 - 3/C #12
 1 - 3/C #20

EXTEND INTO HH 10
 2" RSC
 1 - 5/C #12

2 PEDESTAL FOUNDATION
 TYPE 1A
 R10-6 SIGN (18" x 24")

5 PA90 POLE FOUNDATION
 TYPE PA90-A30-D40-9 (DAVIT AT 350°)
 LUM-200W HPS WITH PEC & CHECK SWITCH
 2-ONEWAY SIGNALS (OVERHEAD)
 MID MAST ARM MOUNT 11' FROM END
 ONE WAY EVP DETECTOR AND LIGHT (Ø3)
 TYPE 10A POLE MOUNTED AT 270°
 2 - R9-3A SIGN (18"x18") FACE **4** & **1**

EXTEND INTO HH 4
 2" RSC
 1 - 5/C #12

EXTEND INTO HH 14
 3" RSC
 2 - 12/C #12
 1 - 3/C #12 (LUM)
 1 - 3/C #12
 1 - 3/C #20

3 PA90 POLE FOUNDATION
 TYPE PA90-A35-D40-9 (DAVIT AT 350°)
 LUM-200W HPS WITH PEC & CHECK SWITCH
 2 - ONEWAY SIGNALS (OVERHEAD)
 MID MAST ARM MOUNT 11' FROM END
 ONE WAY EVP DETECTOR AND LIGHT (Ø6)
 2 - TYPE 10A POLE MOUNTED AT 0° AND 270°

EXTEND INTO HH 9
 3" RSC
 2 - 12/C #12
 1 - 3/C #12 (LUM)
 1 - 3/C #12
 1 - 3/C #20

A EQUIPMENT PAD (SEE DETAILS)
 CONTROLLER AND CABINET
 SERVICE EQUIPMENT (PAD MOUNTED)

CABINET TO HH 1
 4" RSC
 1-5/C #12
 2-12/C #12
 1-3/C #12
 1-3/C #20
 1-3/C #14
 1-6PR #19

LOAD CENTER TO HH 16
 1 1/4" RSC
 3-3/C #12 (LUM)

LOAD CENTER TO CABINET
 1 1/4" RSC
 2-1/C #6
 1-1/C #6 BR GR

CABINET TO HH 16
 4" RSC
 4-12/C #12
 2-3/C #12
 1-3/C #14
 2-3/C #20
 1-6PR #19
 3-5/C #12

METER TO HH 17
 2" RSC
 3-1/C #2

3" R.S.C.
 STUB OUT AND
 CAP ENDS

B S.O.P.-PAD MOUNTED TRANSFORMER
 (BY OTHERS)

EXTEND INTO HH 14
 2" RSC
 3-1/C #2

2" NMC
 1-6PR #19

INPLACE
 HH A-3

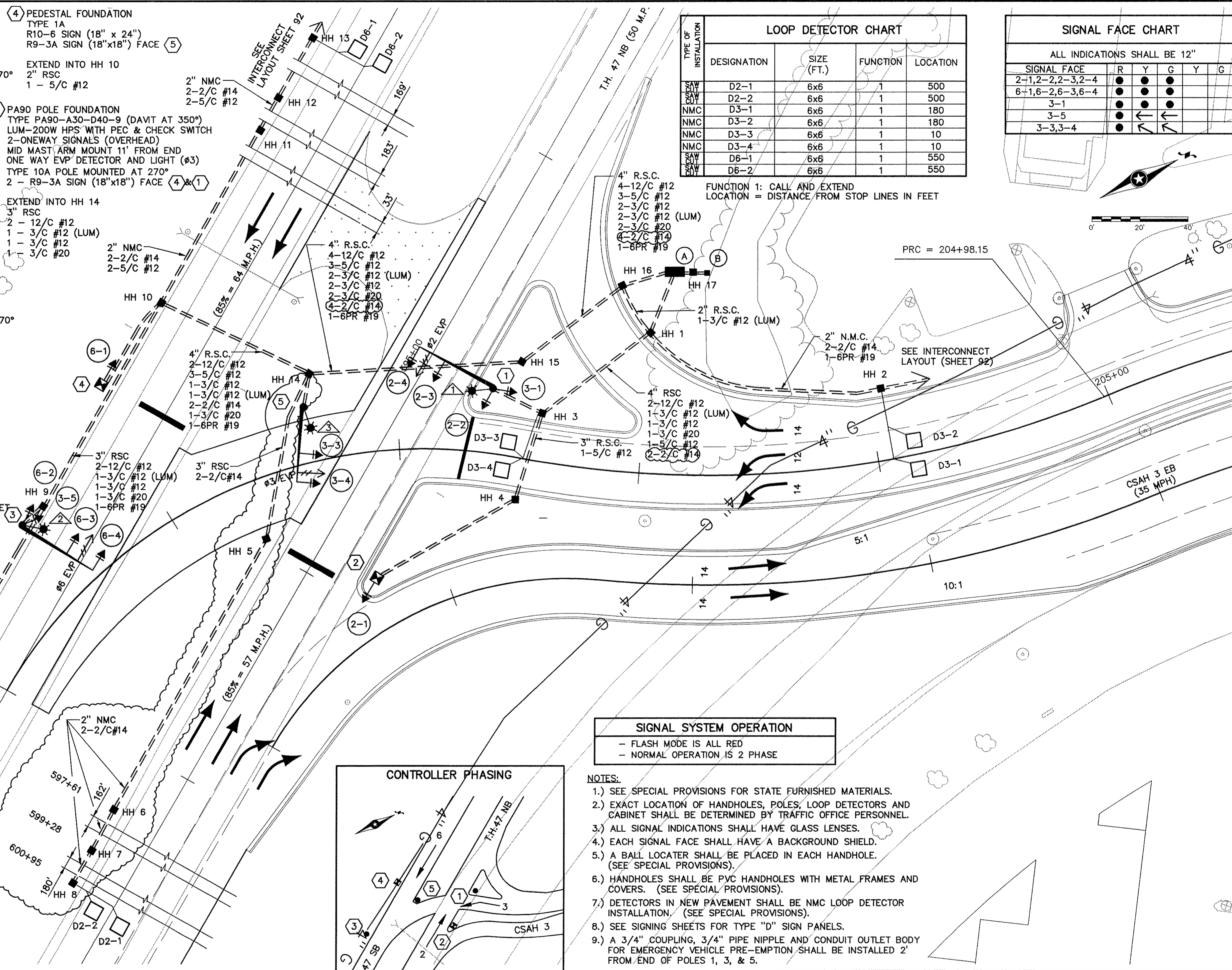
SEE INTERCONNECT LAYOUT
 (SHEET 92)

T.H. 47 SB (50 M.P.H.)

SEE INTERCONNECT LAYOUT
 (SHEET 92)

T.H. 47 NB (50 M.P.H.)

SEE INTERCONNECT LAYOUT
 (SHEET 92)

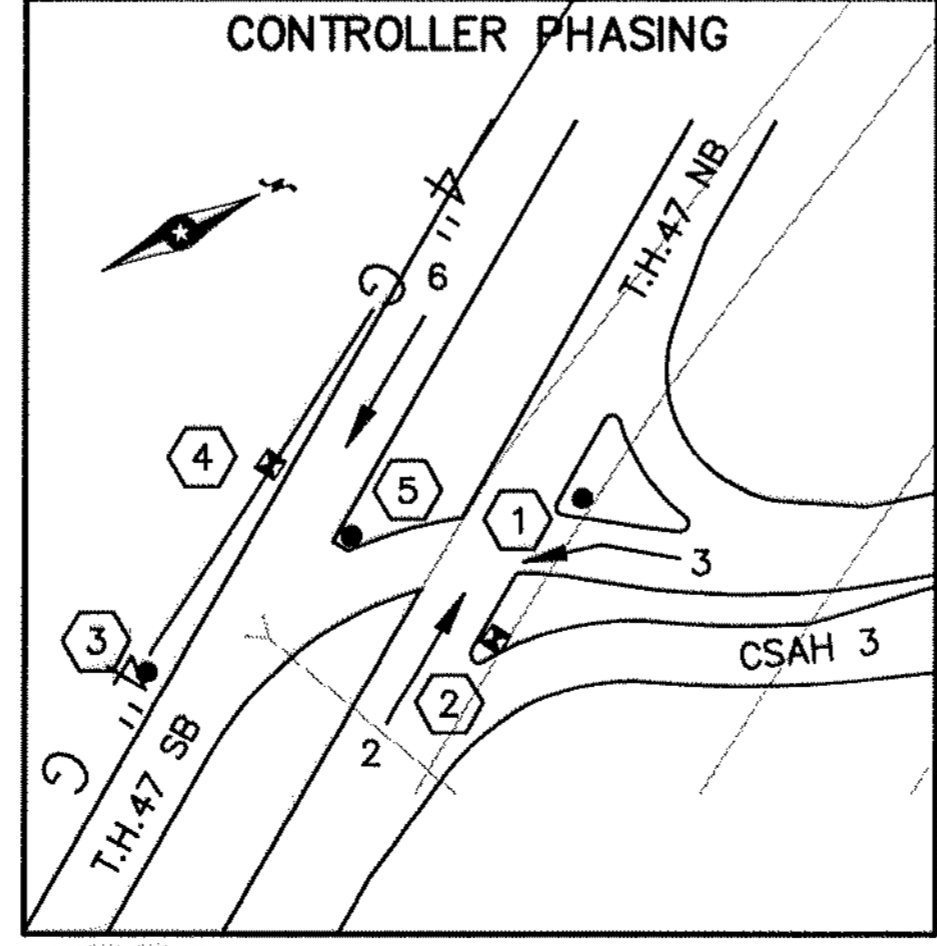


TYPE OF INSTALLATION	DESIGNATION	SIZE (FT.)	FUNCTION	LOCATION
SAW	D2-1	6x6	1	500
SAW	D2-2	6x6	1	500
NMC	D3-1	6x6	1	180
NMC	D3-2	6x6	1	180
NMC	D3-3	6x6	1	10
NMC	D3-4	6x6	1	10
SAW	D6-1	6x6	1	550
SAW	D6-2	6x6	1	550

SIGNAL FACE CHART					
ALL INDICATIONS SHALL BE 12"					
SIGNAL FACE	R	Y	G	Y	G
2-1,2-2,2-3,2-4	●	●	●		
6-1,6-2,6-3,6-4	●	●	●		
3-1	●	●	●		
3-5	●	●	●		
3-3,3-4	●	←	←		

FUNCTION 1: CALL AND EXTEND
 LOCATION = DISTANCE FROM STOP LINES IN FEET

SIGNAL SYSTEM OPERATION
 - FLASH MODE IS ALL RED
 - NORMAL OPERATION IS 2 PHASE



- NOTES:**
- 1.) SEE SPECIAL PROVISIONS FOR STATE FURNISHED MATERIALS.
 - 2.) EXACT LOCATION OF HANDHOLES, POLES, LOOP DETECTORS AND CABINET SHALL BE DETERMINED BY TRAFFIC OFFICE PERSONNEL.
 - 3.) ALL SIGNAL INDICATIONS SHALL HAVE GLASS LENSES.
 - 4.) EACH SIGNAL FACE SHALL HAVE A BACKGROUND SHIELD.
 - 5.) A BALL LOCATOR SHALL BE PLACED IN EACH HANDHOLE. (SEE SPECIAL PROVISIONS).
 - 6.) HANDHOLES SHALL BE PVC HANDHOLES WITH METAL FRAMES AND COVERS. (SEE SPECIAL PROVISIONS).
 - 7.) DETECTORS IN NEW PAVEMENT SHALL BE NMC LOOP DETECTOR INSTALLATION. (SEE SPECIAL PROVISIONS).
 - 8.) SEE SIGNING SHEETS FOR TYPE "D" SIGN PANELS.
 - 9.) A 3/4" COUPLING, 3/4" PIPE NIPPLE AND CONDUIT OUTLET BODY FOR EMERGENCY VEHICLE PRE-EMPTION SHALL BE INSTALLED 2' FROM END OF POLES 1, 3, & 5.

SYSTEM ID 21905
 METER ADDRESS T.H. 47 AT C.S.A.H. 3
 NE QUADRANT

STATE PROJECT NO.
 02-600-11

INTERSECTION LAYOUT (SYSTEM "B")
 T.H. 47 AT C.S.A.H. 3 (UNIVERSITY AVENUE)

SHEET 90 OF 140 SHEETS

DRAWING NAME: SIGNAL2.DWG PLOT DATE: 1-20-97 (AS BUILT)

I HEREBY CERTIFY THAT THIS PLAN, SPECIFICATION OR REPORT WAS MADE BY ME OR UNDER MY DIRECT SUPERVISION AND THAT I AM A DULY REGISTERED PROFESSIONAL ENGINEER UNDER THE LAWS OF THE STATE OF MINNESOTA.
 DATE: Feb 7, 1997 REC. NO. 10453
 DESIGN BY: TJC
 CHECKED BY: JMB
 COMM. NO.:
 RECORDED COPY BY: DATE: 10-14-94
 SCALE: AS NOTED
 PLAN BY: JMB
 EXPLANATION:
 REROUTE CONDUIT ON SOUTH APPROACH
 AS BUILT



PLANNING • TRANSPORTATION • ENGINEERING • URBAN DESIGN
 700 Third Street South, Apt. 55415