

MINNESOTA DEPARTMENT OF TRANSPORTATION

ANOKA COUNTY

CONSTRUCTION PLAN FOR BITUMINOUS OVERLAY

LOCATED ON CR 74 IN THE CITY OF EAST BETHEL BETWEEN EAST BETHEL BLVD. AND DURANT STREET

STATE PROJ. NO. 02-600-09

STATE PROJ. NO.

MN PROJ. NO.

GROSS LENGTH 5294.00 FEET 1.003 MILES
 BRIDGES-LENGTH FEET MILES
 EXCEPTIONS-LENGTH FEET MILES
 NET LENGTH 5294.00 FEET 1.003 MILES

GROSS LENGTH FEET MILES
 BRIDGES-LENGTH FEET MILES
 EXCEPTIONS-LENGTH FEET MILES
 NET LENGTH FEET MILES

MINN. PROJ. NO.

MINN. PROJ. NO. STP PAVE (010)

GOVERNING SPECIFICATIONS

THE 1988 EDITION OF THE MINNESOTA DEPARTMENT OF TRANSPORTATION "STANDARD SPECIFICATIONS FOR CONSTRUCTION" AS AMENDED BY THE JANUARY 2, 1991 SUPPLEMENTAL SPECIFICATIONS SHALL GOVERN.

INDEX

SHEET NO.	DESCRIPTION
1	TITLE SHEET
2	ESTIMATED QUANTITIES
3	TABULATED QUANTITIES
4	TYPICAL SECTIONS
5	STANDARD DETAILS
6	TRAFFIC CONTROL

THIS PLAN CONTAINS 6 SHEETS

DESIGN DESIGNATION

≤18₂₀ NA
 R VALUE NA
 ADT (1993)= 895
 Proj. ADT (2013)= 1522
 Proj. HCADT (2013)= 114
 Soil Factor 50%
 7 TON DESIGN
 Shoulder Width 3'

Functional Classification
 No. of Traffic Lanes No. of Parking Lanes
 Design Speed 55 MPH
 Based on Stopping Sight Distance
 Height of eye 3.5 Height of object 0.5
 Design Speed not achieved at: NA
 STA. TO STA. MPH
 STA. TO STA. MPH
 STA. TO STA. MPH

I HEREBY CERTIFY THAT THIS PLAN WAS PREPARED BY ME OR UNDER MY DIRECT SUPERVISION AND THAT I AM A DULY REGISTERED PROFESSIONAL ENGINEER UNDER THE LAWS OF THE STATE OF MINNESOTA.

DATE 8/21/93 REG. NO. 20235 ENGR. Douglas M. Tischer ANOKA COUNTY DESIGN ENGINEER

DESIGN SQUAD J. TRICK

Recommended for Approval Michael R. Kelly 8/27, 1993
 Recommended for Approval [Signature] 8/21, 1993
 Recommended for Approval [Signature] 9/27, 1993
 Approved 8/30, 1993 [Signature] ANOKA COUNTY ENGINEER
 Approved 9/10, 1993 [Signature] CITY OF EAST BETHEL
 Recommended for Approval Mary P. Beesinger 10/10, 1993
 Recommended for Approval [Signature] METRO-ASST. DIV. ENGINEER - STATE
 Approved 4/8, 1994 [Signature] STATE AID ENGINEER

DEPARTMENT OF TRANSPORTATION
 FEDERAL HIGHWAY ADMINISTRATION
 APPROVED _____
 DIVISION ADMINISTRATOR DATE

STATE AID PROJ. NO. _____
 STATE PROJ. NO. 02-600-09 SHEET NO. 1 OF 6 SHEETS

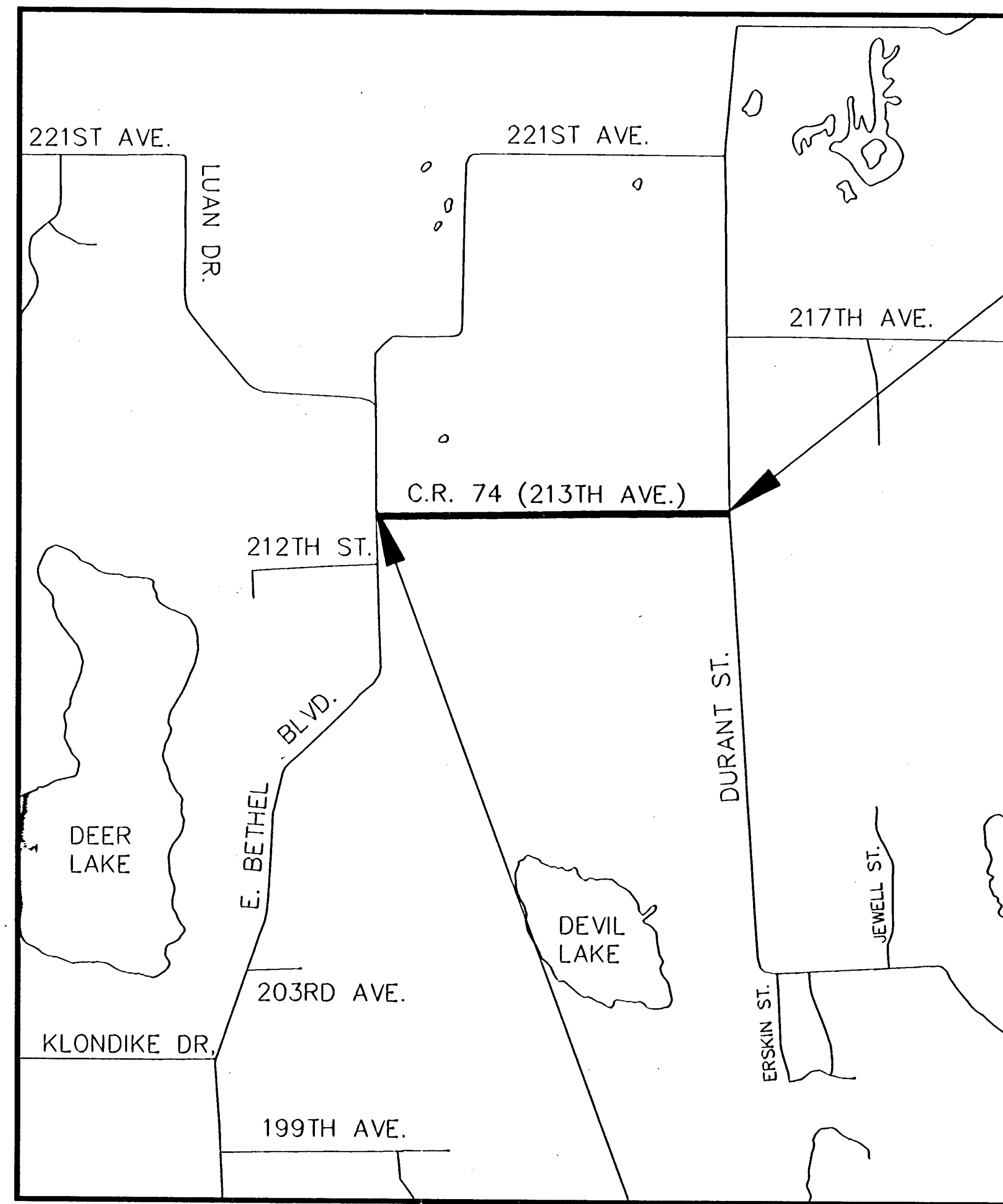
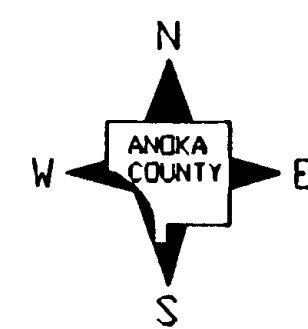
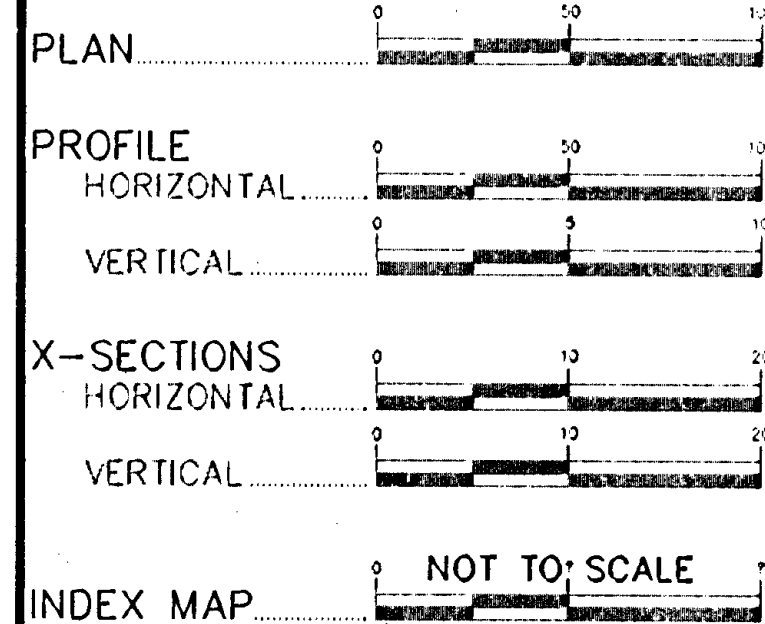
PLAN SYMBOLS

- COUNTY LINE
- TOWNSHIP OR RANGE LINE
- SECTION LINE
- QUARTER LINE
- SIXTEENTH LINE
- RIGHT OF WAY LINE
- SLOPE EASEMENT
- PRESENT RIGHT OF WAY
- PROPERTY LINE
- CORPORATE OR CITY LIMITS
- RETAINING WALL
- RAILROAD
- RAILROAD RIGHT OF WAY
- RIVER OR CREEK
- DRAINAGE DITCH
- CULVERT
- CROP INLET
- GAUGE RAIL
- BARBED WIRE FENCE
- WOVEN WIRE FENCE
- CHAIN LINK FENCE
- WOOD FENCE
- STONE WALL OR FENCE
- HEDGE
- LOWLAND
- TIMBER
- ORCHARD
- BRUSH
- NURSERY
- CATTLE GAUD
- OVERPASS (Highway Over)
- UNDERPASS (Highway Under)
- BRIDGE
- BUILDING (One Story Frame)
- F-FRAME C-CONCRETE
- S-STONE T-TILE
- B-BRICK ST-STUCCO
- RAILROAD CROSSING BELL
- RAILROAD CROSSING GATE
- MANHOLE
- CATCH BASIN
- FIRE HYDRANT
- CAST IRON MONUMENT
- IRON PIN
- GRAVEL PIT
- SAND PIT
- BORROW PIT
- ROCK QUARRY

UTILITY SYMBOLS

- POWER POLE LINE
- TELEPHONE OR TELEGRAPH POLE LINE
- JOINT TELEPHONE & POWER ON POWER POLES
- ON TELEPHONE POLES
- ANCHOR
- STEEL TOWER
- STREET LIGHT
- FEDESTAL (Cable Terminal)
- GAS MAIN
- WATERMAIN
- TELEPHONE CABLE IN CONDUIT
- ELECTRIC CABLE IN CONDUIT
- TELEPHONE MANHOLE
- ELECTRIC MANHOLE
- BURIED TELEPHONE CABLE
- BURIED ELECTRIC CABLE
- AERIAL TELEPHONE CABLE
- SEWER (Sanitary or Storm)
- SEWER MANHOLE

SCALES



END S.P. 02-600-09
 STA. 52+94.00

