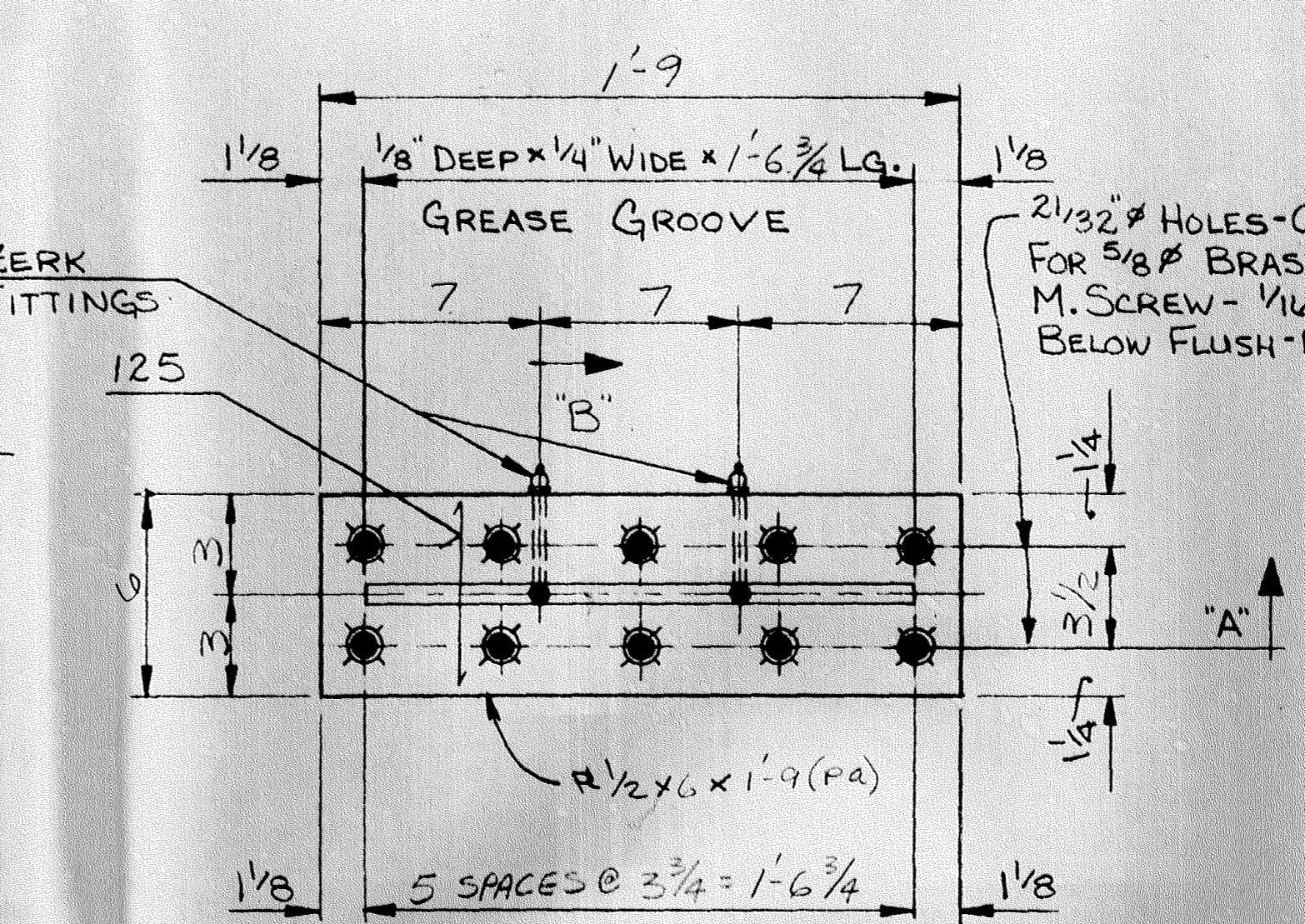
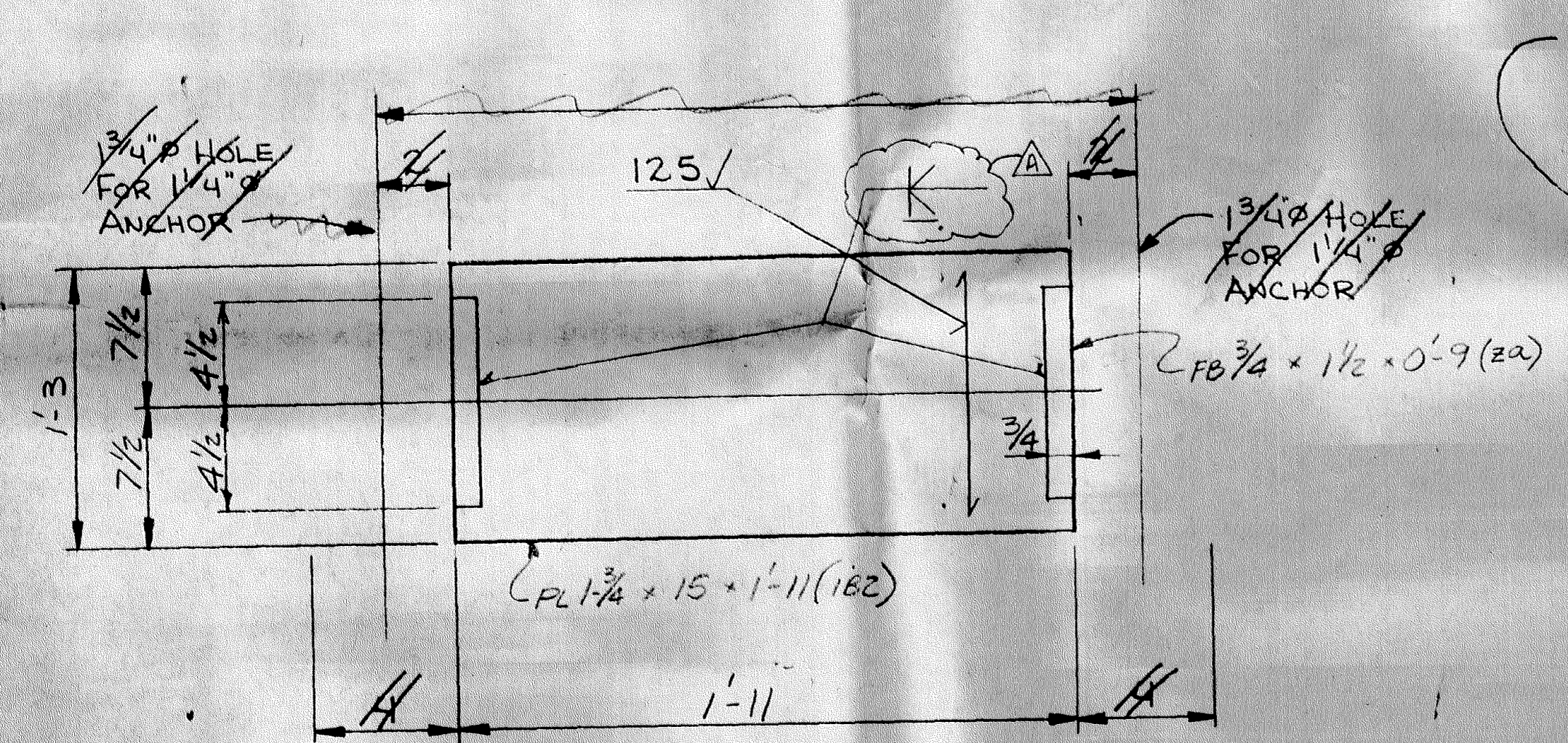


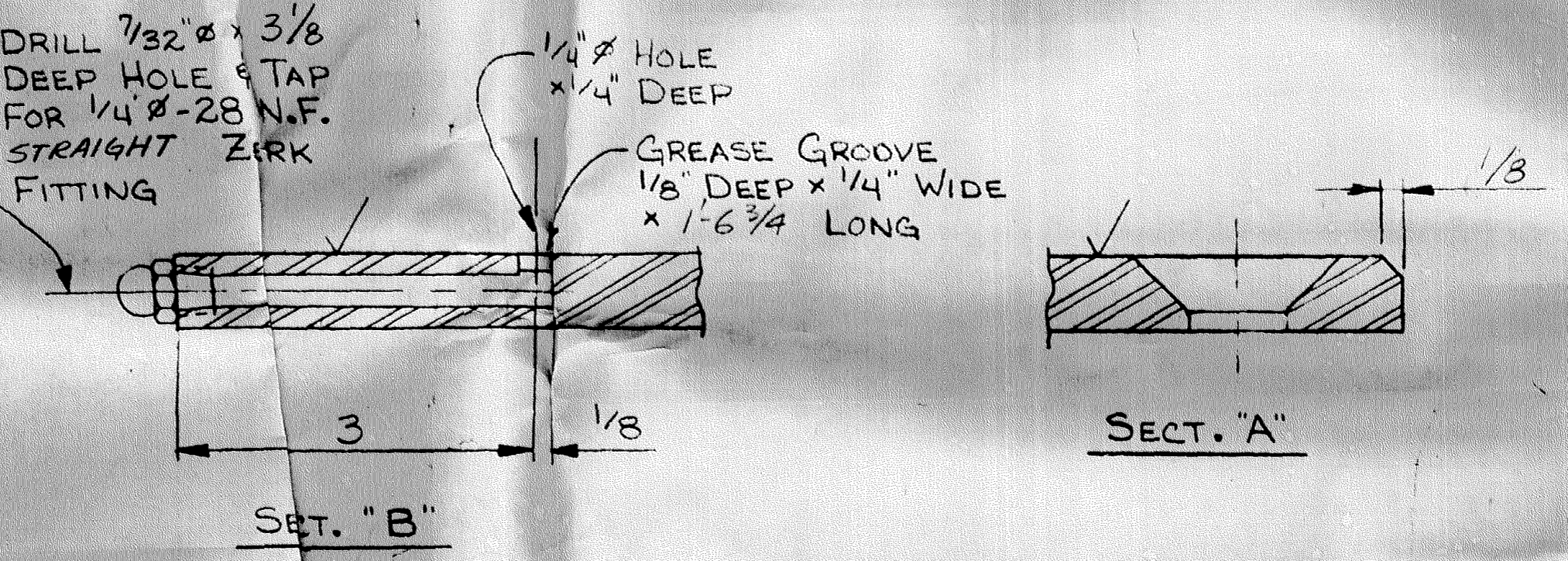
2 - ASSEMBLY - 1A1
(WITH LUBRICATED BRONZE R. (pa)
FASTENED IN PLACE)



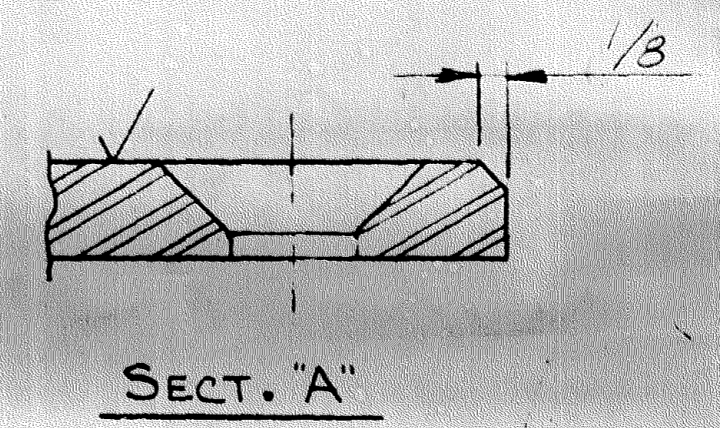
DETAIL LUBRICATED BRONZE R. - (pa)



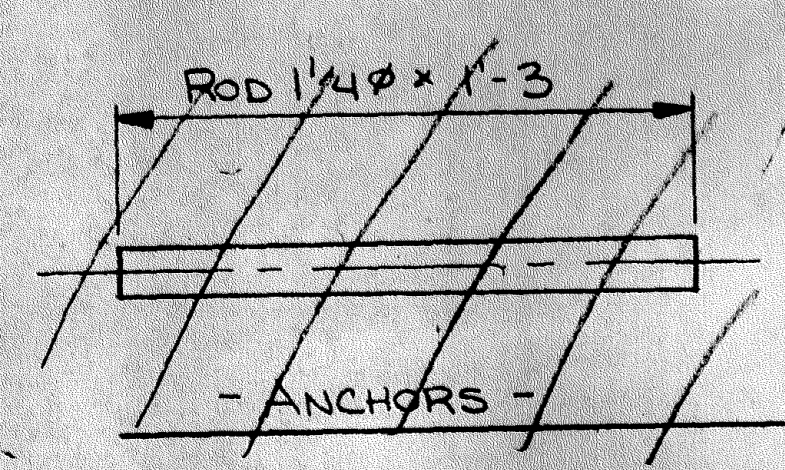
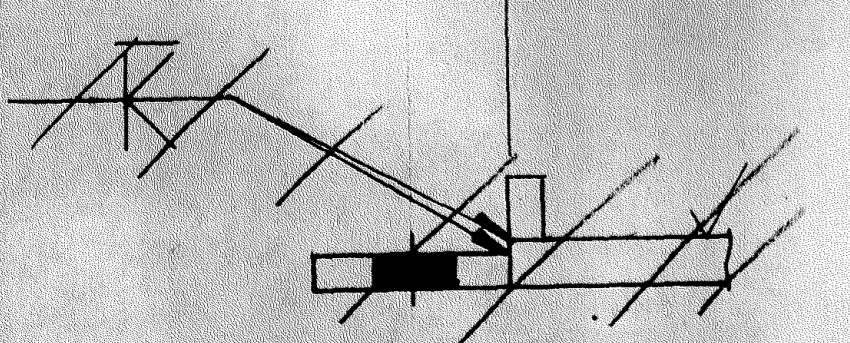
2 - BRG. R. WELDMENTS - 1B2



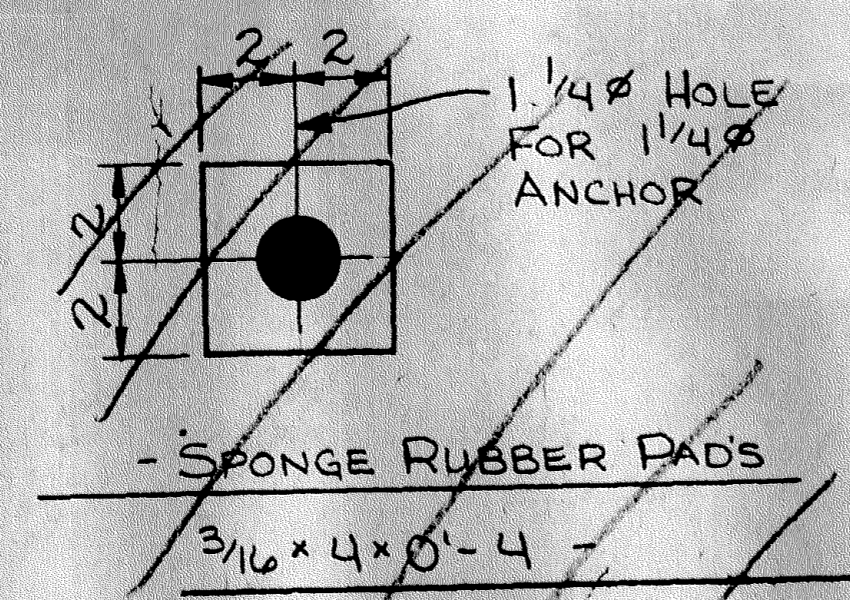
SECT. "B"



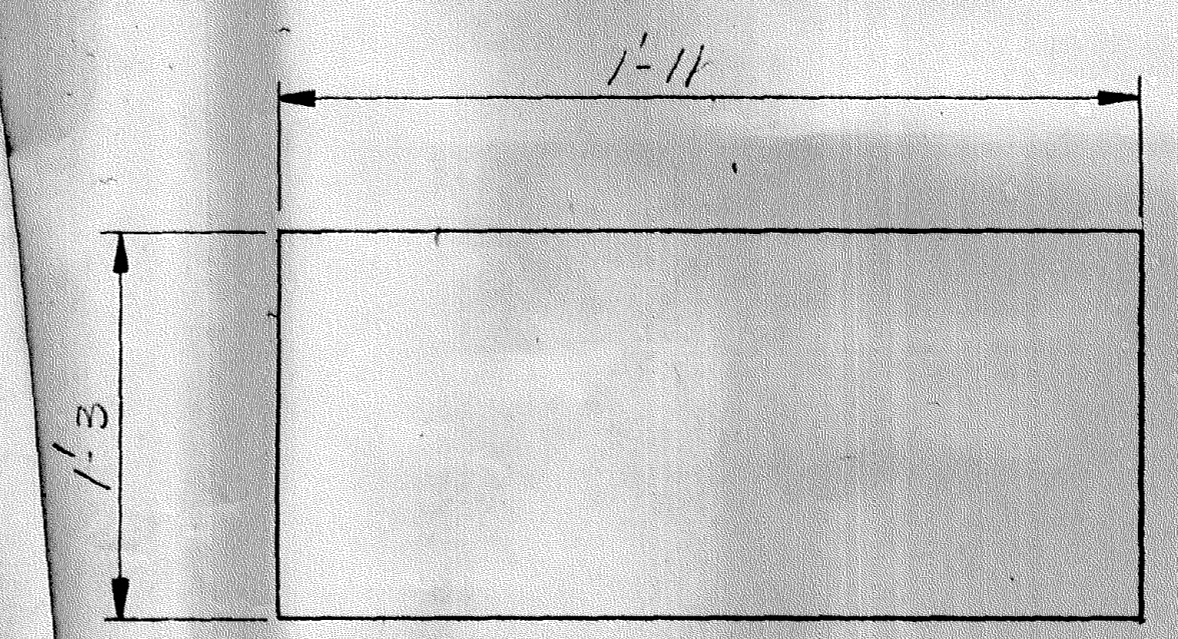
SECT. "A"



- ANCHORS -



- SPONGE RUBBER PADS
3/16 x 4 x 0'-4 -



2 - SHEET LEAD 8# x 15 x 1'-11 - 1L3

SHOP DRAWING REVIEW
State of Minnesota
Department of Transportation
NO OBJECTION TAKEN
MAY 10 1991
REVIEW IS FOR GENERAL COMPLIANCE
WITH PLANS AND SPECIFICATIONS
JOHN R. ALLEN
STRUCTURAL METALS ENGINEER

PROJ. FILE

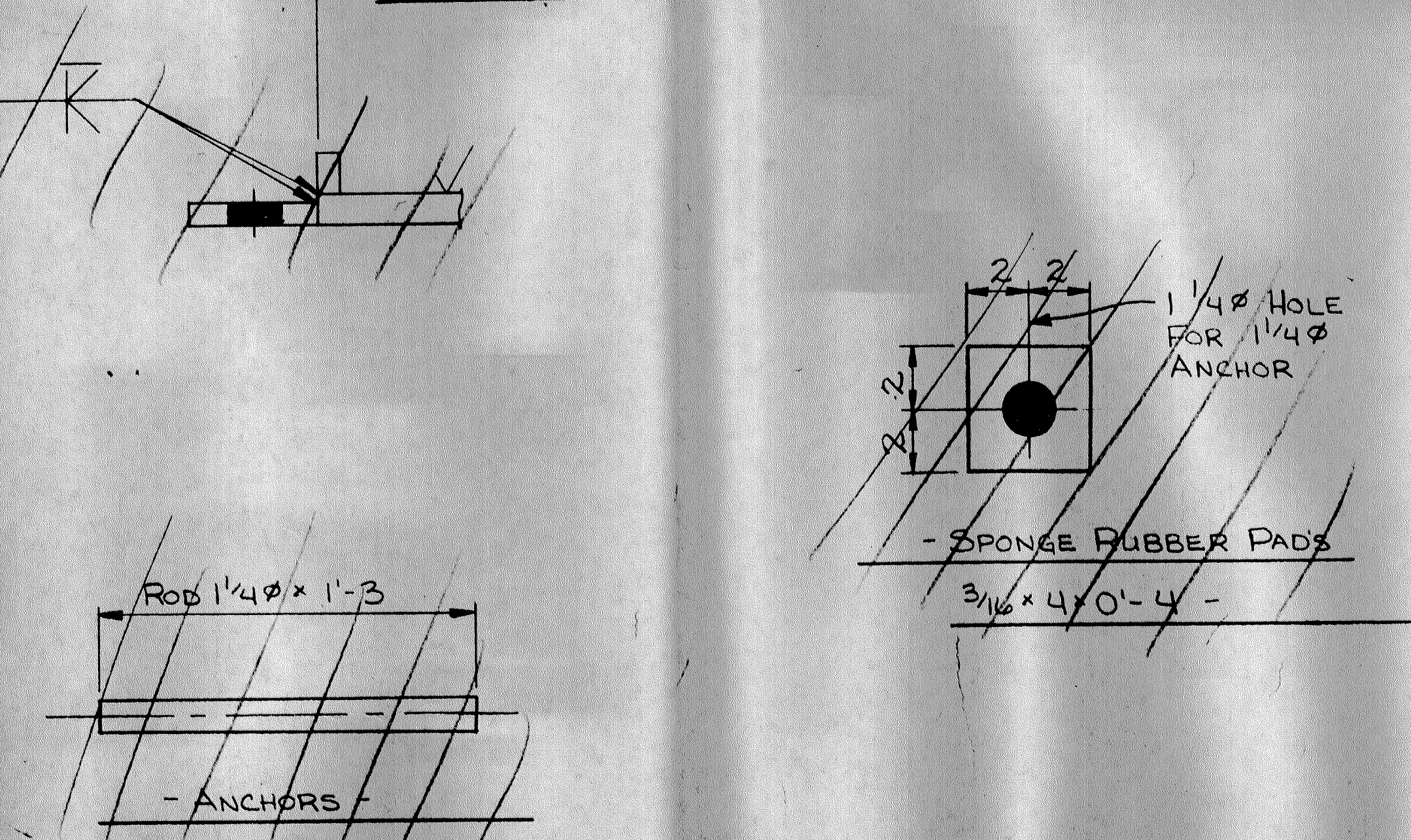
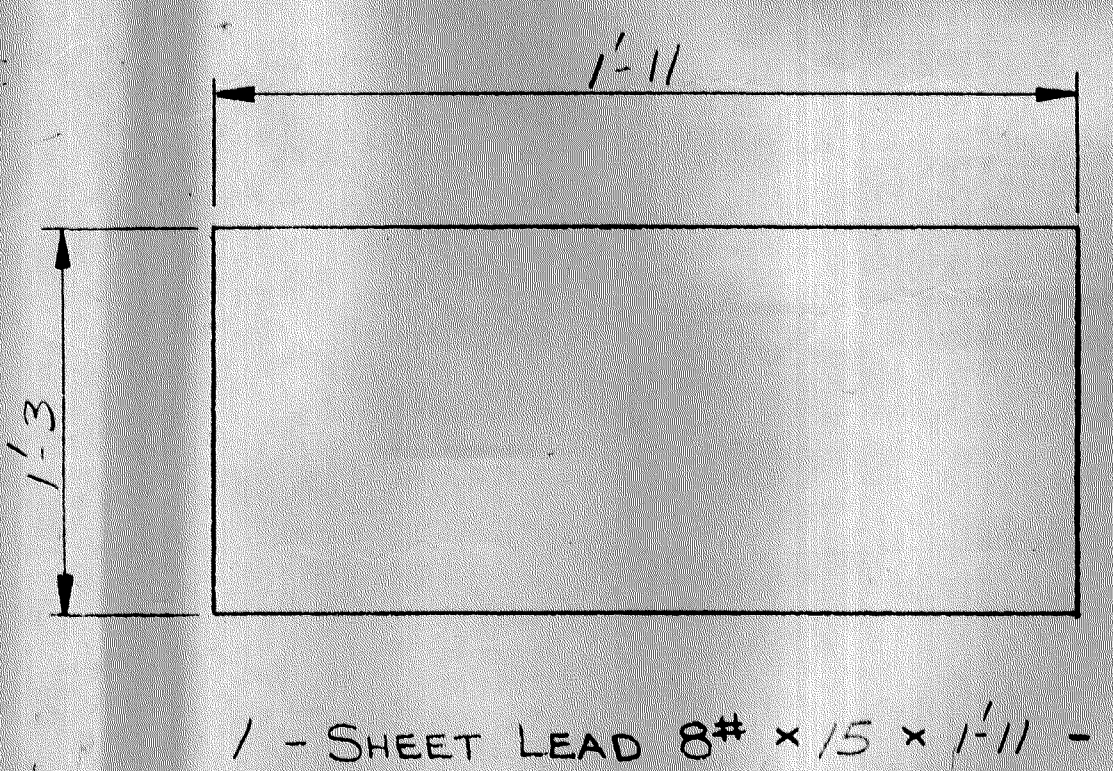
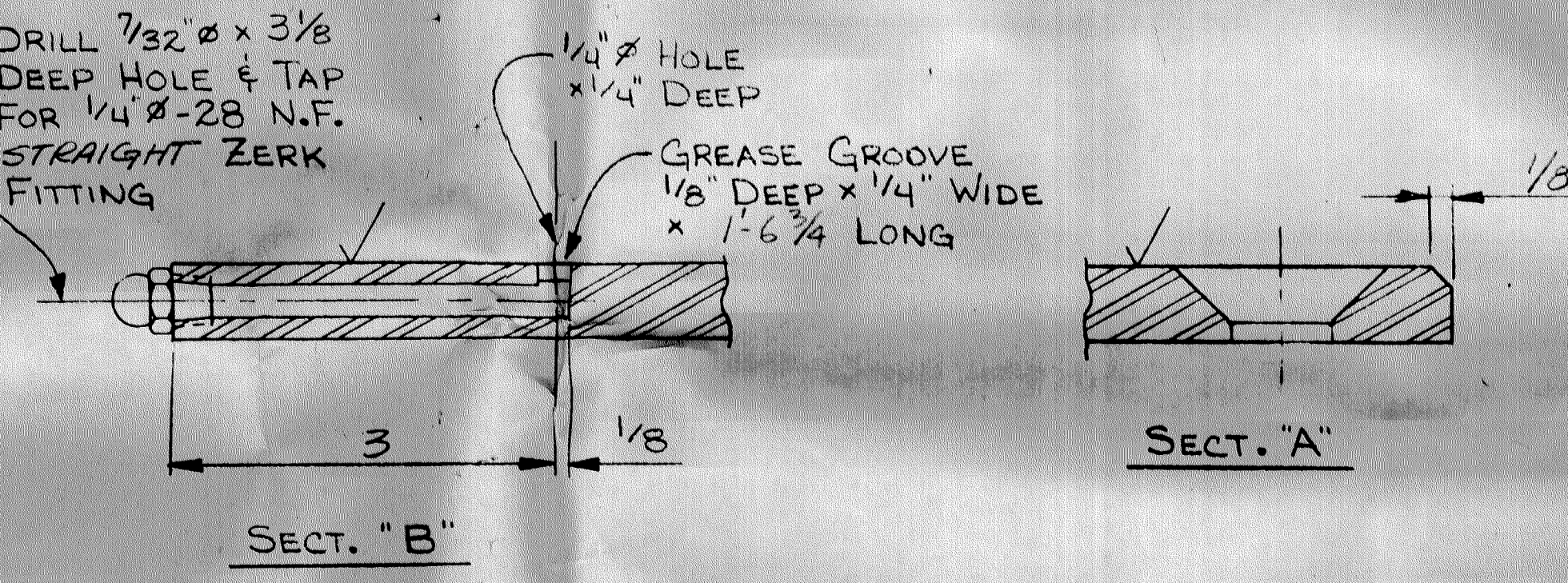
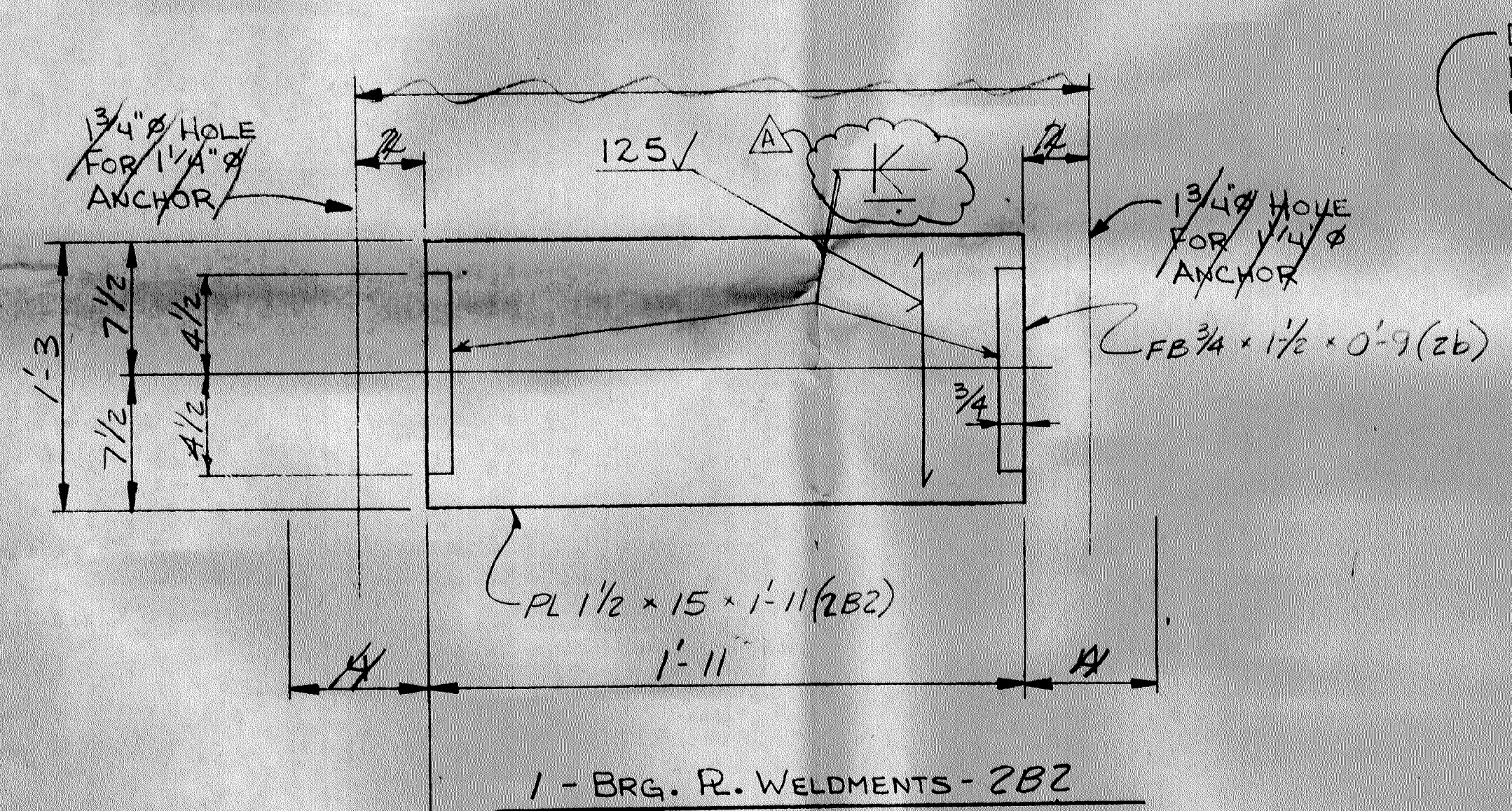
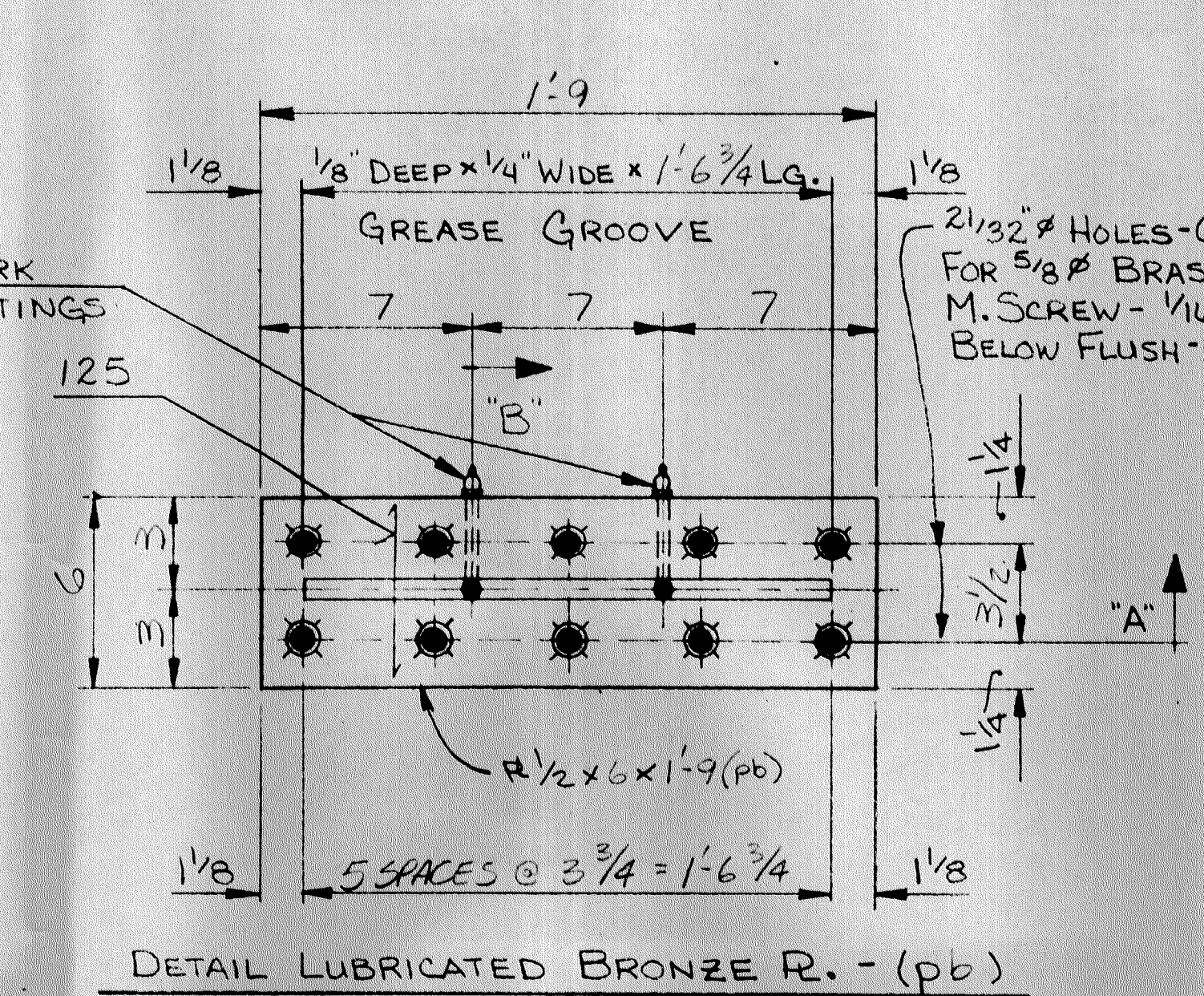
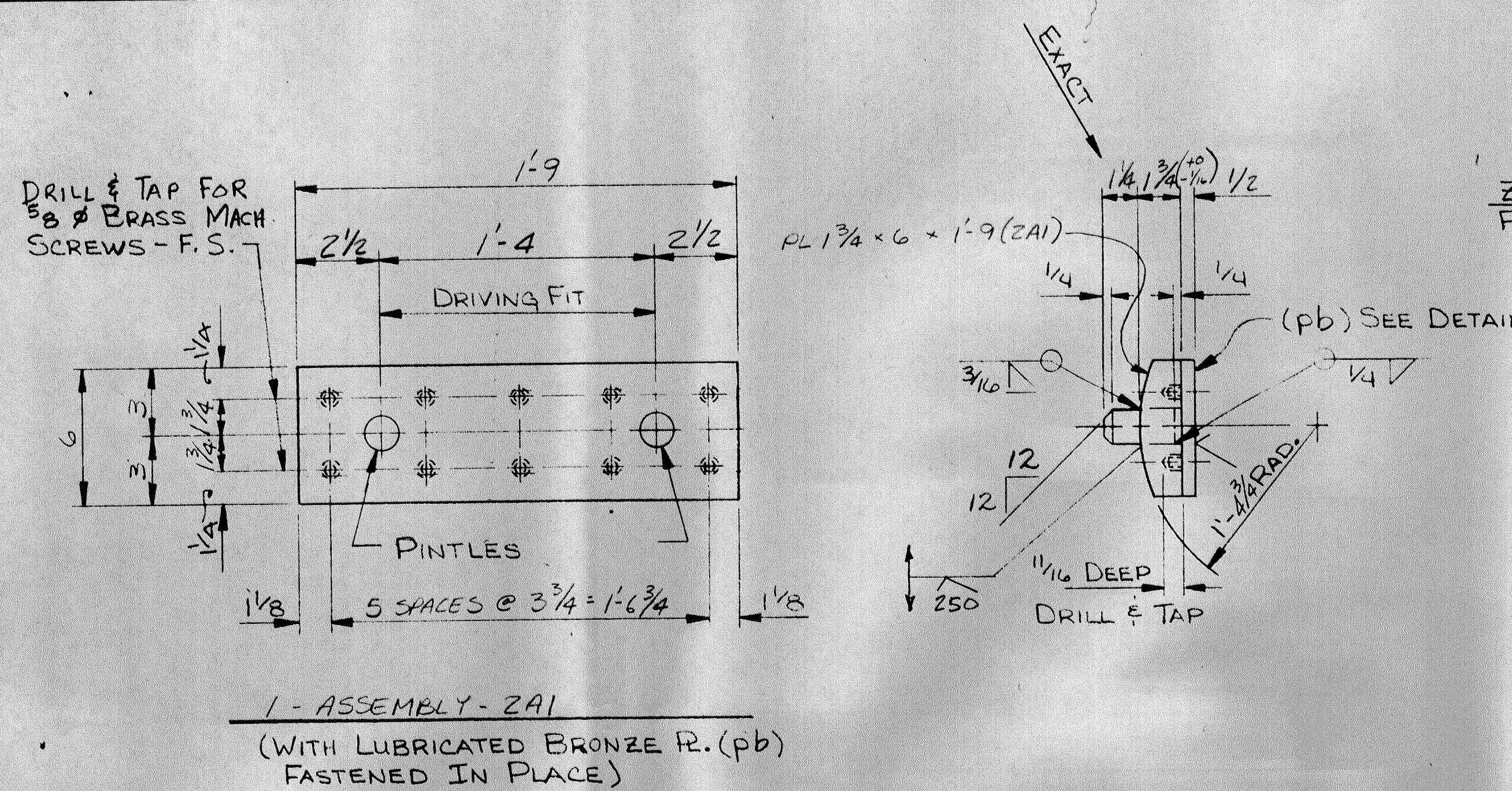
LINE NO.	RECD.	DESCRIPTION	LENGTH		MK	REMARKS	WGHT.	
			FT.	INCH				
1								
2		2 - ASSEMBLY - 1A1						
3		2 PL 1 3/4 x 6	1'	9	1A1	MACH.		
4		2 RB 1 1/2 CF4140 ANLD	0'	2 3/4	ma	MN/DOT 3314 TYPE II		
5		2 LB 1/2 x 6	1'	9	pa	MACH. - MN/DOT 3329 BRONZE		
6		24 MB 5/8 x 1 SLTD. CTSK BRASS			XL			
7		4 1E 1/4 - 28 STRAIGHT ZERK FITTING						
8								
9		2 - BRG. PL WELDMENTS - 1B2						
10		2 R 1 3/4 x 15	1'	11	1B2			
11		4 FB 3/4 x 1 1/2	0'	9	za			
12		2 - SHEET LEAD - 1L3						
13		2 SL 1/8 x 15	1'	11	1L3	MN/DOT 3335		
14								
15								
16								
17								
18								
19								
20								
21								
22								
23								
24								
25								
26								
27								
28								
29								
30								
31								
32								
33								
34								
35								
36								
37								
38								
39								
40								
41		GENERAL NOTES:						
42		1.) LUBRICATED BRONZE R. SHALL COMPLY WITH MN/DOT 3329, WITH LUBRICATING RECESSES.						
43		2.) ALL R'S. EXCEPT LUBRICATED BRONZE & SHEET LEAD SHALL COMPLY WITH MN/DOT 3306.						
44		3.) PINTLES SHALL COMPLY WITH MN/DOT 3314 TYPE II.						
45		4.) STEEL R'S. & PINTLES SHALL BE GALVANIZED PER MN/DOT 3394 AFTER FABRICATION.						
46		5.) ANCHOR RODS SHALL BE GALVANIZED PER MN/DOT 3394.						
47		6.) SHOP INSPECTION BY MN/DOT BEFORE AND AFTER GALV.						
48		7.) MATERIAL AND WORKMANSHIP SHALL BE IN ACCORDANCE WITH MN/DOT "STANDARD SPECS. FOR HIGHWAY CONSTRUCTION" 1988 EDITION & THE SPECIAL PROVISIONS.						
49		8.) R. SHALL BE FLAT AFTER FAB & WELDING WITHIN 1/16".						
50		9.) ALL FIN, RAGGED OR DISTORTED EDGES RESULTING FROM SHEARING, SPEED SAWING OR FLAME CUTTING SHALL BE REMOVED. EDGE FINISH PER MN/DOT 2471.3C4 & 2741.3D4.						
51		10.) SHEET LEAD PER MN/DOT 3335.						
52								
53								
54								
55								
56								
57								
58								
59								
60								
61								
62								
63		- 5/1/91 APPROVAL CHANGES - SET						

LEWIS ENGINEERING COMPANY
4221 NOREX DR., CHASKA, MN

PROJECT - BRIDGE No. 02523
STATE PROJECT - 02-602-09
FEDERAL PROJECT -
CUSTOMER - PROGRESSIVE CONTRACTORS, INC.
LOCATION - ANOKA CO, MN

DESCRIPTION - EXPANSION BRG. ASS'YS. w/ GUIDE BARS TYPE E-3
(ABOUT 1, BMS 394)

Job No. 8593-51
Drawn By [Signature]
Checked By [Signature]
Date 4/17/91



LINE NO.	RECD.	DESCRIPTION	LENGTH		MK	REMARKS	WGHT.
			FT.	INCH			
1							
2		1-ASSEMBLY-ZAI					
3	1	R 1 3/4 x 6	1'	9"	ZAI	MACH.	
4	2	R 1 1/2 CF4140 ANLD	0'	2 3/4"	mb	MN/DOT 3314 TYPE II	
5	1	L 8 1/2 x 6	1'	9"	pb	MACH.-MN/DOT 3329 BRONZE	
6	12	MB 5/8 x 1 STD. CTSK. BRASS			XA		
7	2	MT 1/4-28 STRAIGHT ZERK FITTING					
8							
9		1-BRG. R. WELDMENT-ZB2				G	
10	1	R 1 1/2 x 15	1'	11"	ZB2		
11	2	FB 3/4 x 1-1/2	0'	9"	ZB		
12		1-SHEET LEAD-ZL3					
13	1	SL 1/8 x 15	1'	11"	ZL3	MN/DOT 3335	
14							
15							
16							
17							
18							
19							
20							
21							
22							
23							
24							
25							
26							
27							
28							
29							
30							
31							
32							
33							
34							
35							
36							
37							
38							
39							
40							
41		GENERAL NOTES:					
42		1.) LUBRICATED BRONZE R. SHALL COMPLY WITH MN/DOT 3329, WITH LUBRICATING RECESSES.					
43		2.) ALL R'S. EXCEPT LUBRICATED BRONZE & SHEET LEAD SHALL COMPLY WITH MN/DOT 3306.					
44		3.) PINTLES SHALL COMPLY WITH MN/DOT 3314 TYPE II.					
45		4.) STEEL R'S. & PINTLES SHALL BE GALVANIZED PER MN/DOT 3394 AFTER FABRICATION.					
46		5.) ANCHOR RODS SHALL BE GALVANIZED PER MN/DOT 3394.					
47		6.) SHOP INSPECTION BY MN/DOT BEFORE AND AFTER GALV.					
48		7.) MATERIAL AND WORKMANSHIP SHALL BE IN ACCORDANCE WITH MN/DOT "STANDARD SPECS. FOR HIGHWAY CONSTRUCTION" 1988 EDITION & THE SPECIAL PROVISIONS.					
49		8.) R. SHALL BE FLAT AFTER FAB & WELDING WITHIN 1/16".					
50		9.) ALL FIN, RAGGED OR DISTORTED EDGES RESULTING FROM SHEARING, SPEED SAWING OR FLAME CUTTING SHALL BE REMOVED. EDGE FINISH PER MN/DOT 2471.3C4 & 2741.3D4.					
51		10.) SHEET LEAD PER MN/DOT 3335.					
52							
53							
54							
55							
56							
57							
58							
59							
60							
61							
62							
63		A-5/7/91-APPROVAL CHANGES-SGT					

SHOP DRAWING REVIEW
State of Minnesota
Department of Transportation
NO OBJECTION TAKEN
MAY 10 1991
REVIEW IS FOR GENERAL COMPLIANCE WITH PLANS AND SPECIFICATIONS
JOHN R. ALLEN
STRUCTURAL METALS ENGINEER

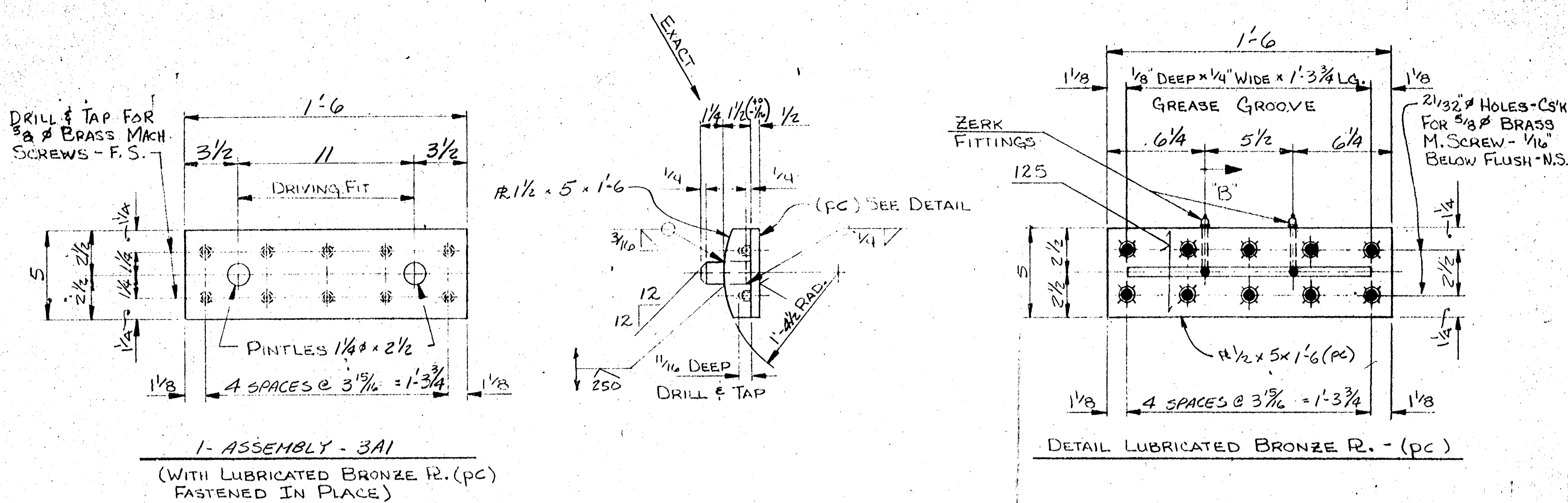
PROJ. FILE

LEWIS ENGINEERING COMPANY
4201 NOREX DR., CHASKA, MN

PROJECT - BRIDGE No. 02523
STATE PROJECT - 02-602-09
FEDERAL PROJECT -
CUSTOMER - PROGRESSIVE CONTRACTORS, INC.
LOCATION - ANOKA CO., MN

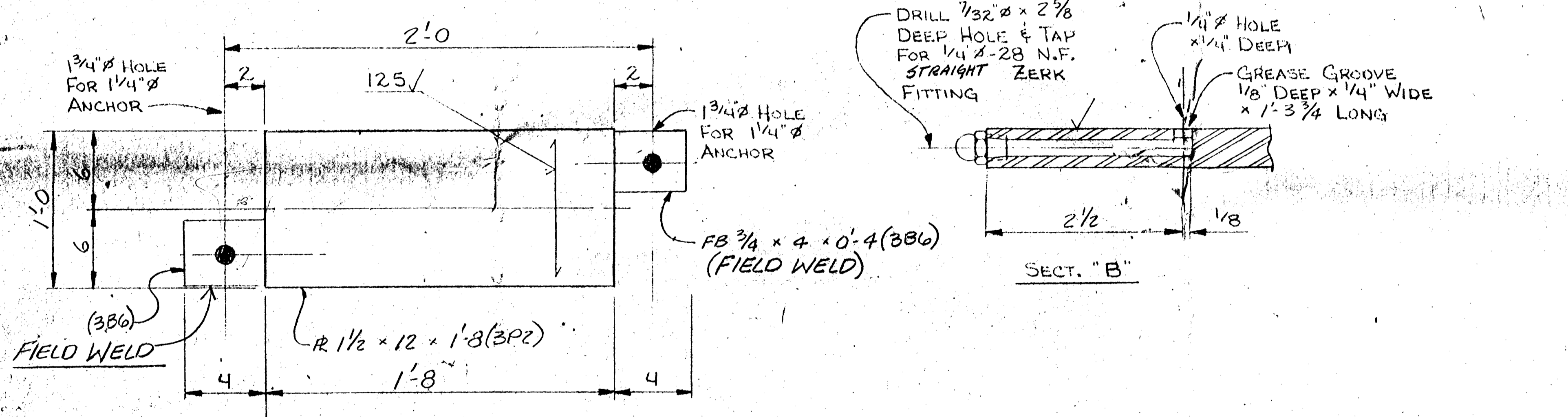
DESCRIPTION - EXPANSION BRG. ASS'YS. w/ GUIDE BARS TYPE E-4
(ABUT 1 Bm 2)

Job No. 8593-51
Drawn By [Signature]
Checked By [Signature]
Date 4/17/91

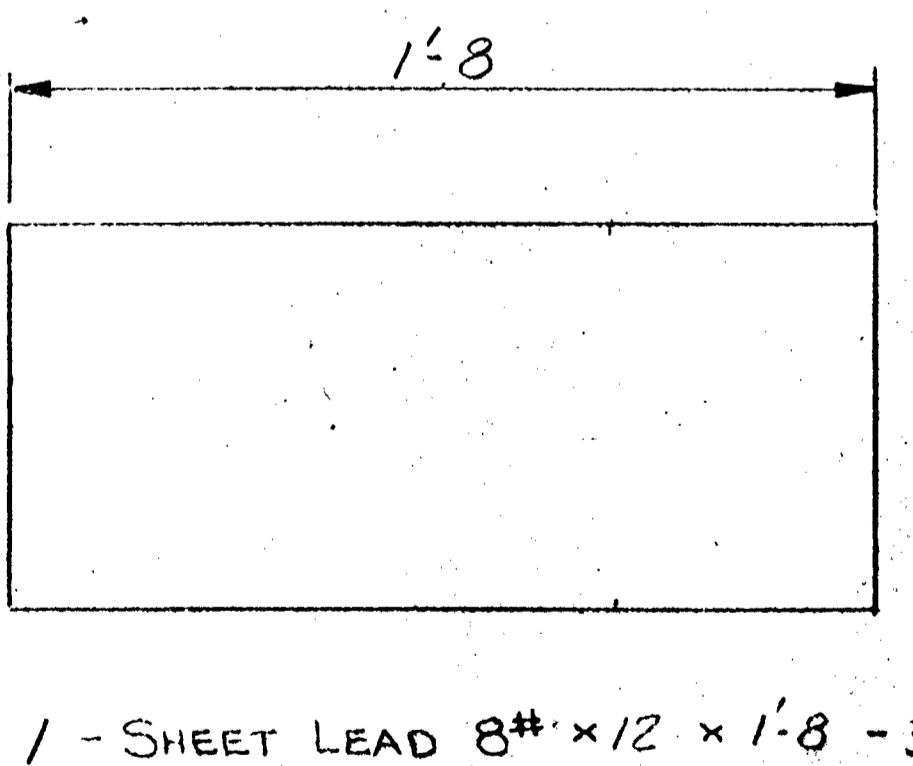


1- ASSEMBLY - 3A1
(WITH LUBRICATED BRONZE R. (PC)
FASTENED IN PLACE)

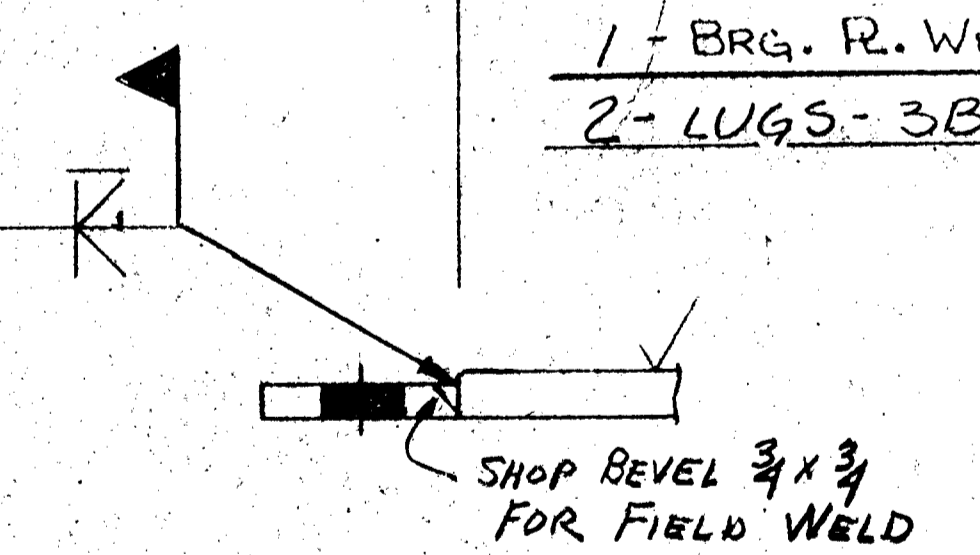
DETAIL LUBRICATED BRONZE R. - (pc)



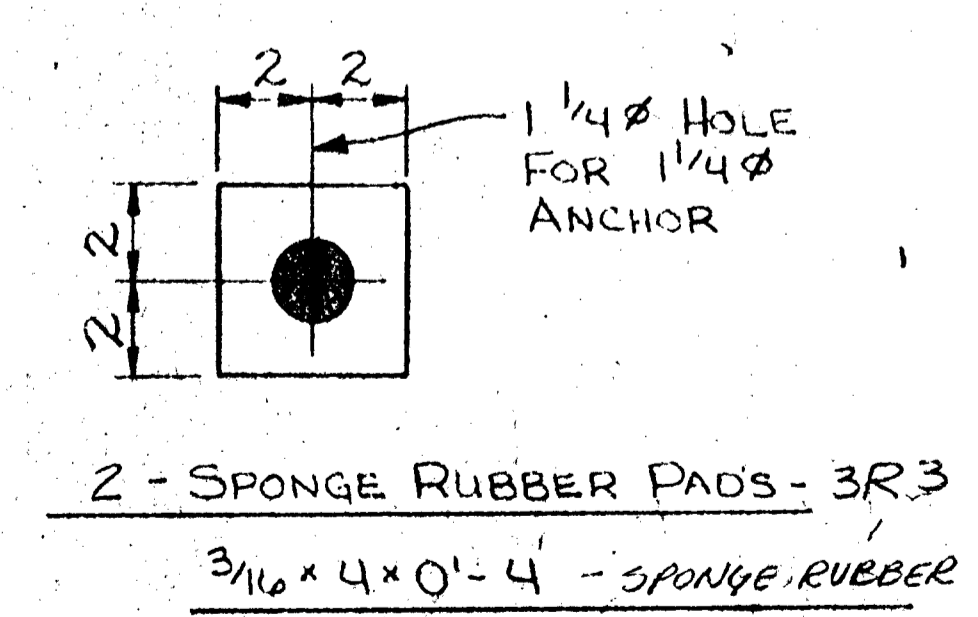
1- BRG. R. WELDMENTS - 3PZ
2- LUGS - 3B6



1 - SHEET LEAD 8# x 12 x 1'-8 - 3L5



2 - ANCHORS - 3A4



2 - SPONGE RUBBER PADS - 3R3
3/16 x 4 x 0'-4 - SPONGE RUBBER

NO.	RECD.	DESCRIPTION	LENGTH		MK	REMARKS	WGT
			FT.	INCH.			
1		1-ASSEMBLY-3A1					
2		1- BRG. R. WELDMENTS - 3PZ					
3		1 R. 1-1/2 x 12	1'	8"	3PZ	MACH.	
4		2- LUGS - 3B6					
5		2 R. 3/4 x 4	0'	4"	3B6		
6		2- ANCHORS - 3A4					
7		2 R. 1/4	1'	3"	3A4		
8		2- SPONGE RUBBER - 3R3					
9		2 PADS 3/16 x 4	0'	4"	3R3		
10		1- SHEET LEAD 8# x 12	1'	8"	3L5		
11		1- SHEET LEAD 8# x 12	1'	8"	3L5		
12		1- BRG. R. WELDMENTS - 3PZ					
13		1 R. 1-1/2 x 12	1'	8"	3PZ	MACH.	
14		2- LUGS - 3B6					
15		2 R. 3/4 x 4	0'	4"	3B6		
16		2- ANCHORS - 3A4					
17		2 R. 1/4	1'	3"	3A4		
18		2- SPONGE RUBBER - 3R3					
19		2 PADS 3/16 x 4	0'	4"	3R3		
20		1- SHEET LEAD 8# x 12	1'	8"	3L5		
21		1- SHEET LEAD 8# x 12	1'	8"	3L5		
22		1- BRG. R. WELDMENTS - 3PZ					
23		1 R. 1-1/2 x 12	1'	8"	3PZ	MACH.	
24		2- LUGS - 3B6					
25		2 R. 3/4 x 4	0'	4"	3B6		
26		2- ANCHORS - 3A4					
27		2 R. 1/4	1'	3"	3A4		
28		2- SPONGE RUBBER - 3R3					
29		2 PADS 3/16 x 4	0'	4"	3R3		
30		1- SHEET LEAD 8# x 12	1'	8"	3L5		
31		1- SHEET LEAD 8# x 12	1'	8"	3L5		
32		1- BRG. R. WELDMENTS - 3PZ					
33		1 R. 1-1/2 x 12	1'	8"	3PZ	MACH.	
34		2- LUGS - 3B6					
35		2 R. 3/4 x 4	0'	4"	3B6		
36		2- ANCHORS - 3A4					
37		2 R. 1/4	1'	3"	3A4		
38		2- SPONGE RUBBER - 3R3					
39		2 PADS 3/16 x 4	0'	4"	3R3		
40		1- SHEET LEAD 8# x 12	1'	8"	3L5		
41		1- SHEET LEAD 8# x 12	1'	8"	3L5		
42		1- BRG. R. WELDMENTS - 3PZ					
43		1 R. 1-1/2 x 12	1'	8"	3PZ	MACH.	
44		2- LUGS - 3B6					
45		2 R. 3/4 x 4	0'	4"	3B6		
46		2- ANCHORS - 3A4					
47		2 R. 1/4	1'	3"	3A4		
48		2- SPONGE RUBBER - 3R3					
49		2 PADS 3/16 x 4	0'	4"	3R3		
50		1- SHEET LEAD 8# x 12	1'	8"	3L5		
51		1- SHEET LEAD 8# x 12	1'	8"	3L5		
52		1- BRG. R. WELDMENTS - 3PZ					
53		1 R. 1-1/2 x 12	1'	8"	3PZ	MACH.	
54		2- LUGS - 3B6					
55		2 R. 3/4 x 4	0'	4"	3B6		
56		2- ANCHORS - 3A4					
57		2 R. 1/4	1'	3"	3A4		
58		2- SPONGE RUBBER - 3R3					
59		2 PADS 3/16 x 4	0'	4"	3R3		
60		1- SHEET LEAD 8# x 12	1'	8"	3L5		
61		1- SHEET LEAD 8# x 12	1'	8"	3L5		
62		1- BRG. R. WELDMENTS - 3PZ					
63		1 R. 1-1/2 x 12	1'	8"	3PZ	MACH.	

LEWIS ENGINEERING COMPANY
4201 NOREX DR. CHASKA, MN.

PROJECT: BRIDGE No. 02523
STATE PROJECT: 02-602-09
FEDERAL PROJECT: -
CUSTOMER: PROGRESSIVE CONTRACTORS, INC.
LOCATION: ANOKA CO., MN.

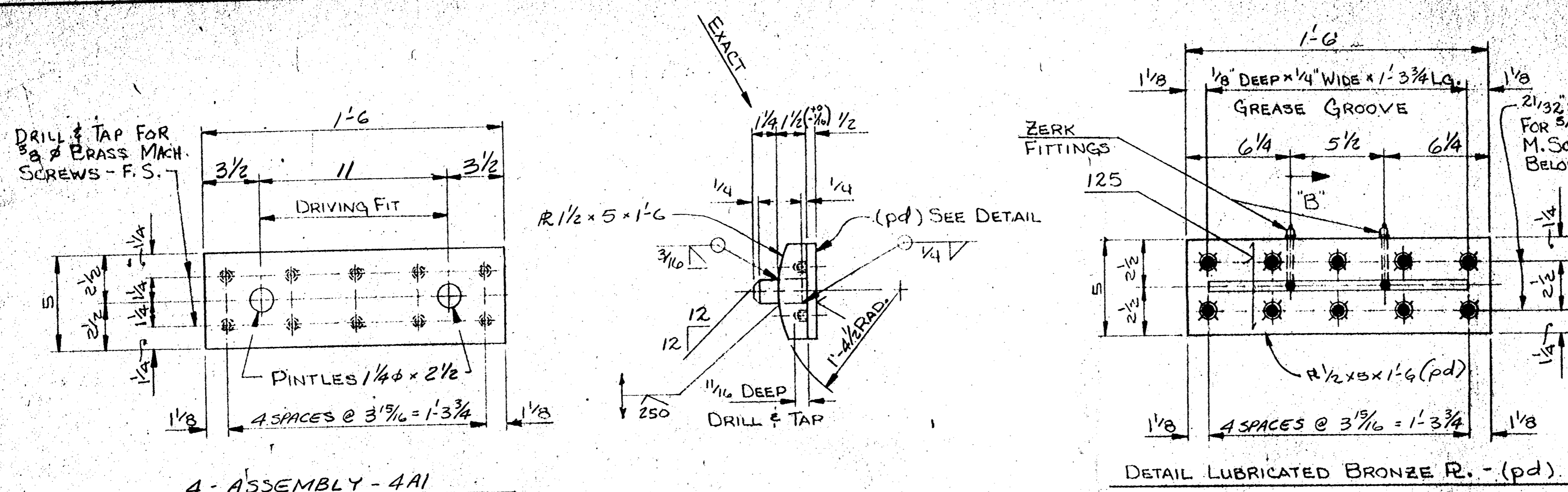
DESCRIPTION: EXPANSION BRG. ASSEMBLY
W/O GUIDE BARS
TYPE B

PROJ. FILE

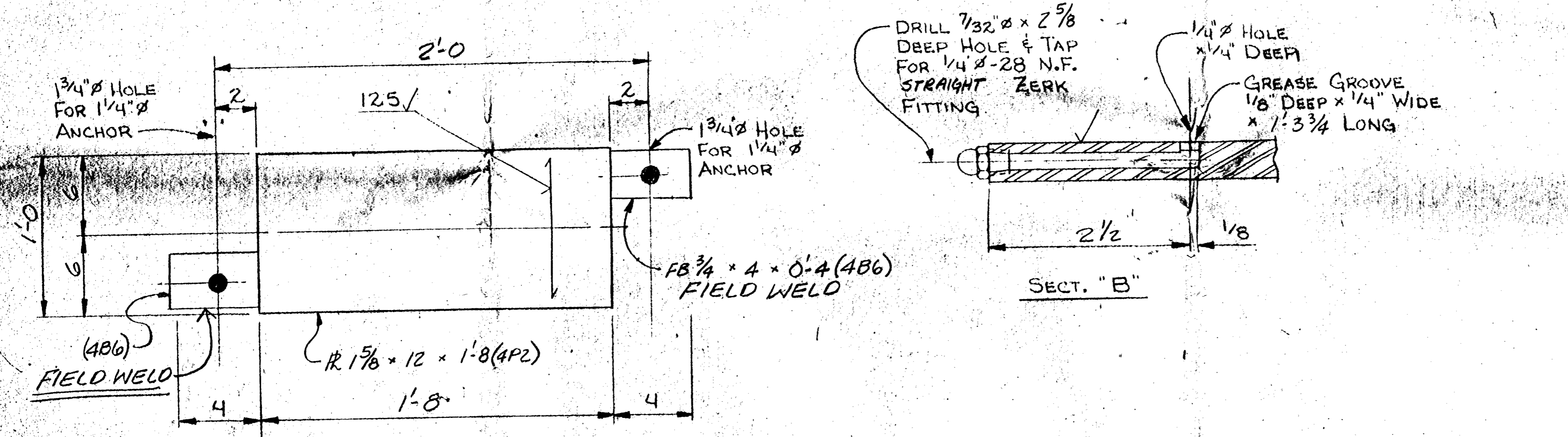
REVIEW IS FOR GENERAL COMPLIANCE WITH PLANS AND SPECIFICATIONS
JOHN R. ALLEN
STRUCTURAL METALS ENGINEER

MAY 10 1991

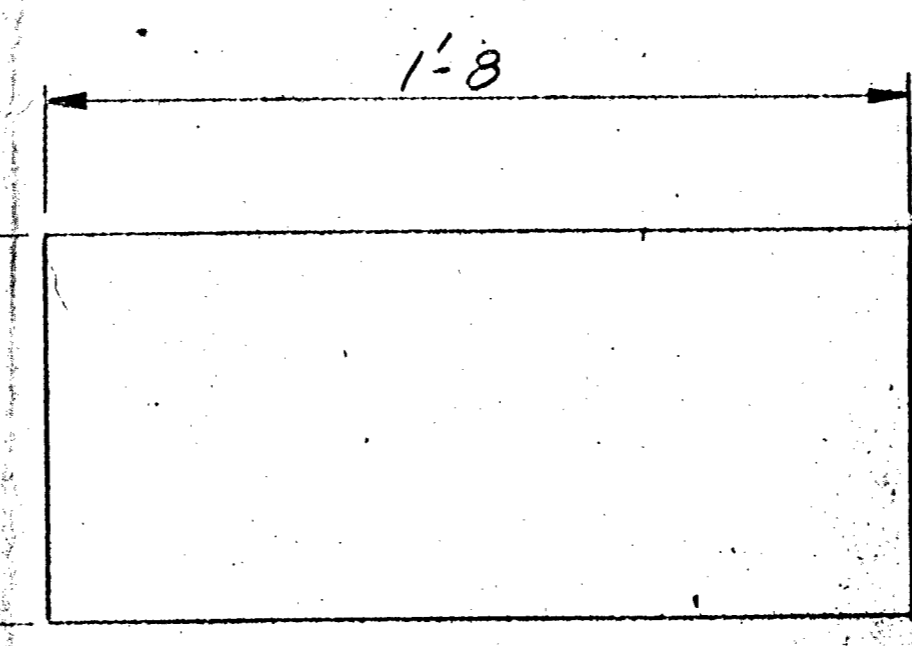
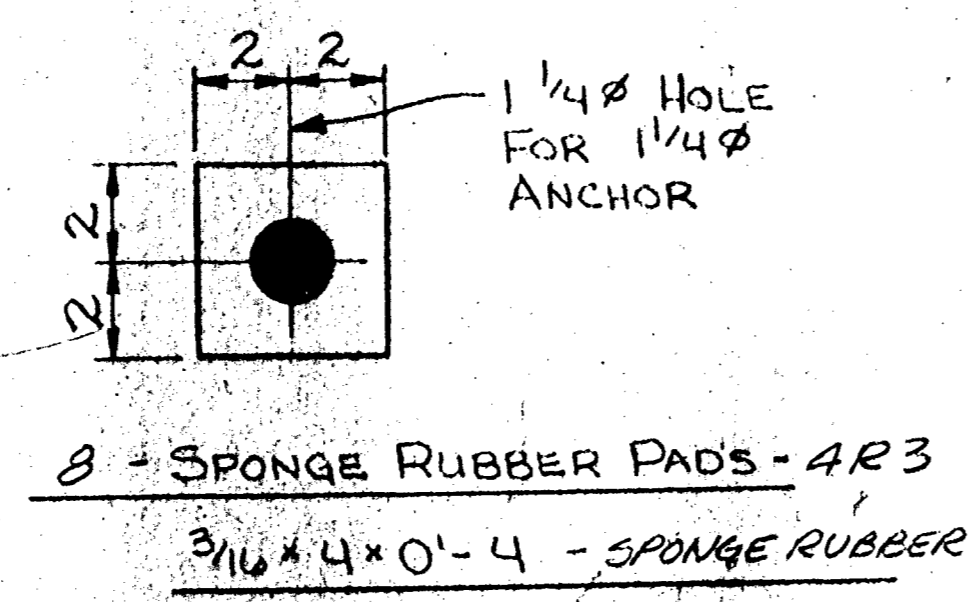
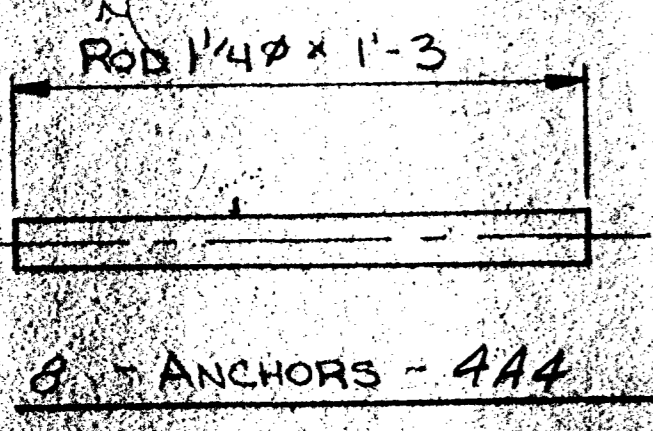
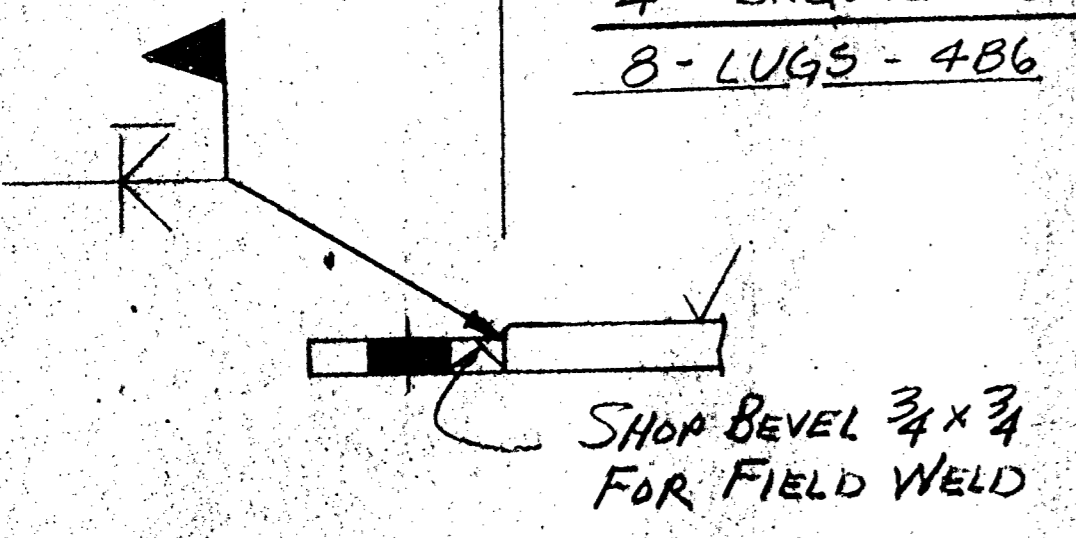
NO OBJECTION TAKEN



4 - ASSEMBLY - 4A1
(WITH LUBRICATED BRONZE R. (pd)
FASTENED IN PLACE)



4 - BRG. R. WELDMENTS - 4P2
8 - LUGS - 4B6



4 - SHEET LEAD 8# x 12 x 1'-8 - 4L5

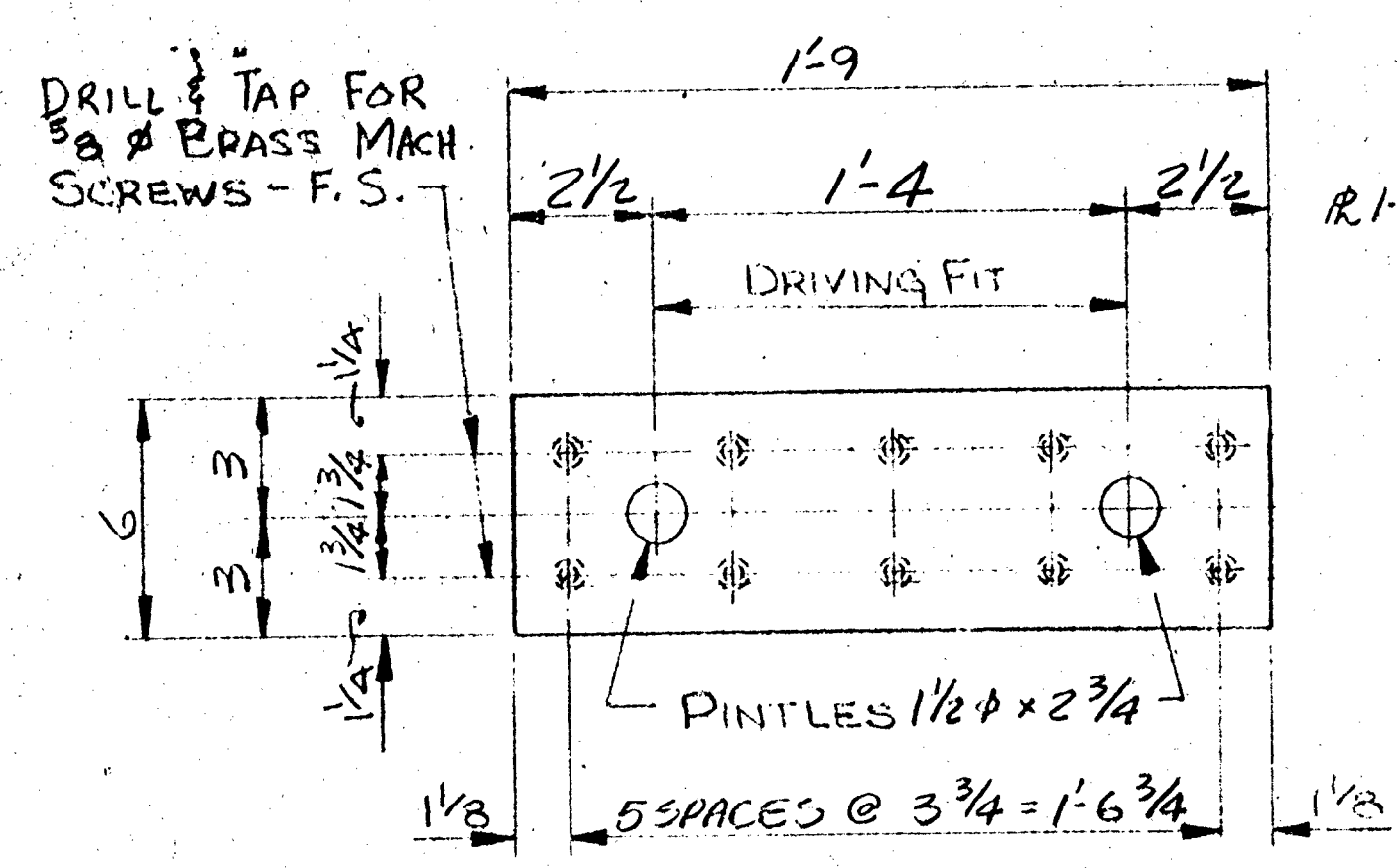
NO.	DESCRIPTION	QUANTITY	UNIT	REMARKS
1				
2	4-ASSEMBLY - 4A1			
3	4 R 1/2 x 5	4	PC	4A1 MACH
4	8 R 1/4 x 4	8	PC	MN/DOT 3306
5	4 LB 1/2 x 5	4	PC	MACH. MIN/DOT
6	40 MB 3/8 x 1-3/4	40	PC	MACH. MIN/DOT
7	8 MI 1/4 - 28 STRAIGHT ZERK FITTING	8	PC	
8				
9				
10				
11	4 - BRG. R. WELDMENTS - 4P2	4	PC	
12	4 R 1/2 x 5	4	PC	4P2 MACH.
13				
14	8 - LUGS - 4B6	8	PC	
15	8 R 3/4 x 4	8	PC	4B6
16				
17	8 - ANCHORS - 4A4	8	PC	4A4
18	8 R 1/4	8	PC	
19				
20				
21				
22	8 - SPONGE RUBBER - 4R3	8	PC	
23	8 PADS 3/16 x 4	8	PC	
24				
25				
26				
27	4 SHEET LEAD 8# x 12	4	PC	MN/DOT 3335
28	4 2 1/2 x 12	4	PC	
29				
30				
31				
32				
33				
34				
35				
36				
37				
38				
39				
40				
41	GENERAL NOTES:			
42	1.) LUBRICATED BRONZE R. SHALL COMPLY WITH MN/DOT 3329 WITH LUBRICATING OIL			
43	2.) ALL R'S, EXCEPT LUBRICATED BRONZE R. SHALL COMPLY WITH MN/DOT 3306			
44	3.) PINTLES SHALL COMPLY WITH MN/DOT 3306			
45	4.) STEEL R'S & PINTLES SHALL BE GALVANIZED AFTER FABRICATION			
46	5.) ANCHOR RODS SHALL BE GALVANIZED PER MN/DOT 3306			
47	6.) SHOP INSPECTION BY MN/DOT ENGINEER AND APPROVAL REQUIRED			
48	7.) MATERIAL AND WORKMANSHIP SHALL BE IN ACCORDANCE WITH MN/DOT STANDARD SPECIFICATIONS FOR HIGHWAY CONSTRUCTION 1988 EDITION, THE SPECIAL PROVISIONS			
49	8.) R. SHALL BE FLAT AFTER FIELD WELDING			
50	9.) ALL FINES, RAGGED OR DISTORTED EDGES SHALL BE REMOVED FROM SHEARING, SPEED SAWING OR FLAME CUTTING			
51	10.) SHALL BE REMOVED. EDGE FINISH PER MN/DOT 2471.324 & 2741.304			
52	11.) SHEET LEAD PER MN/DOT 3335			
53				

NO OF DAYS TO REVIEW
State of Minnesota
Department of Transportation
NO OBJECTION TAKEN
MAY 10 1991
REVIEW IS FOR GENERAL COMPLIANCE
WITH PLANS AND SPECIFICATIONS
JOHN R. ALLEN
STRUCTURAL METALS ENGINEER

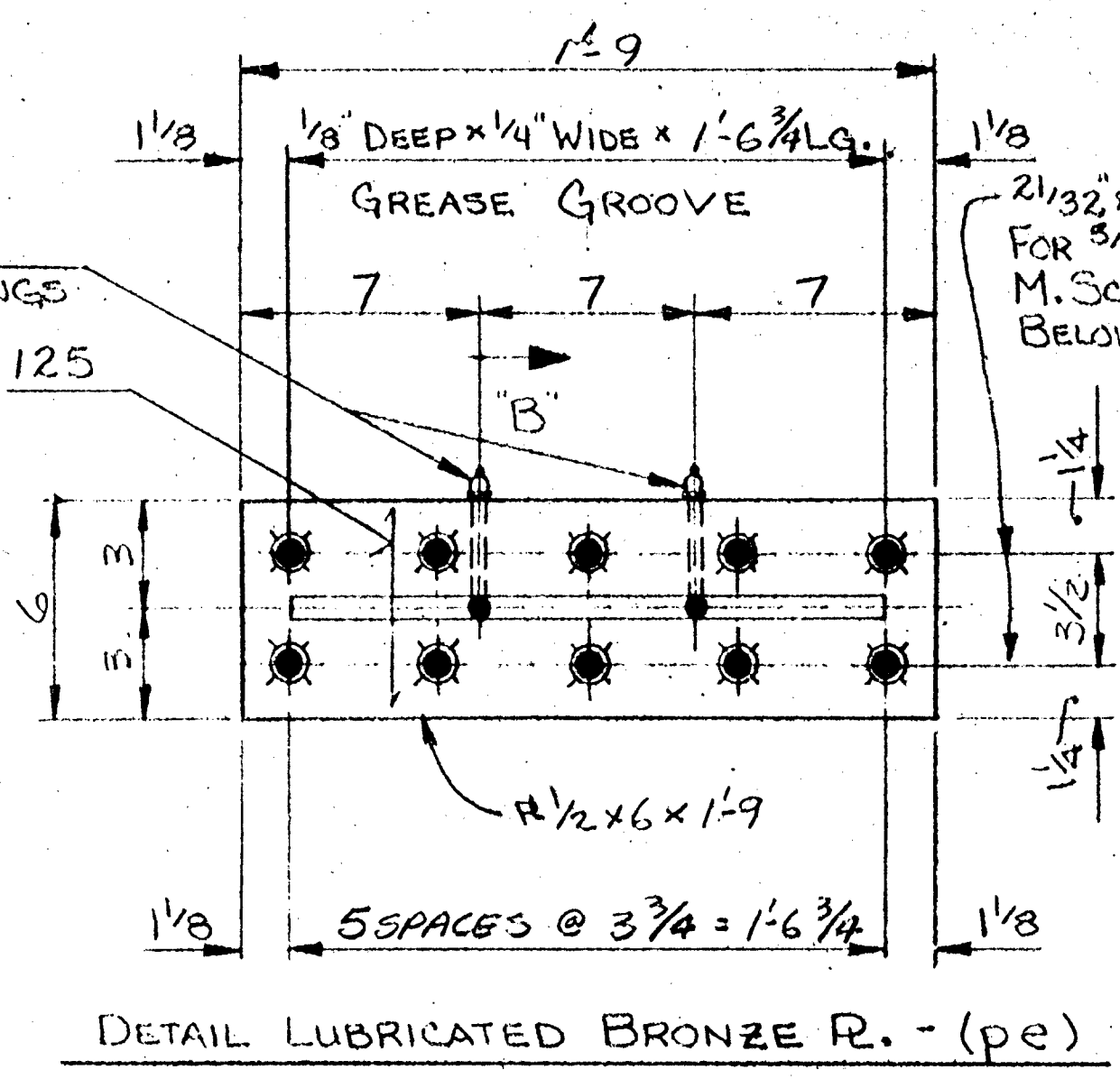
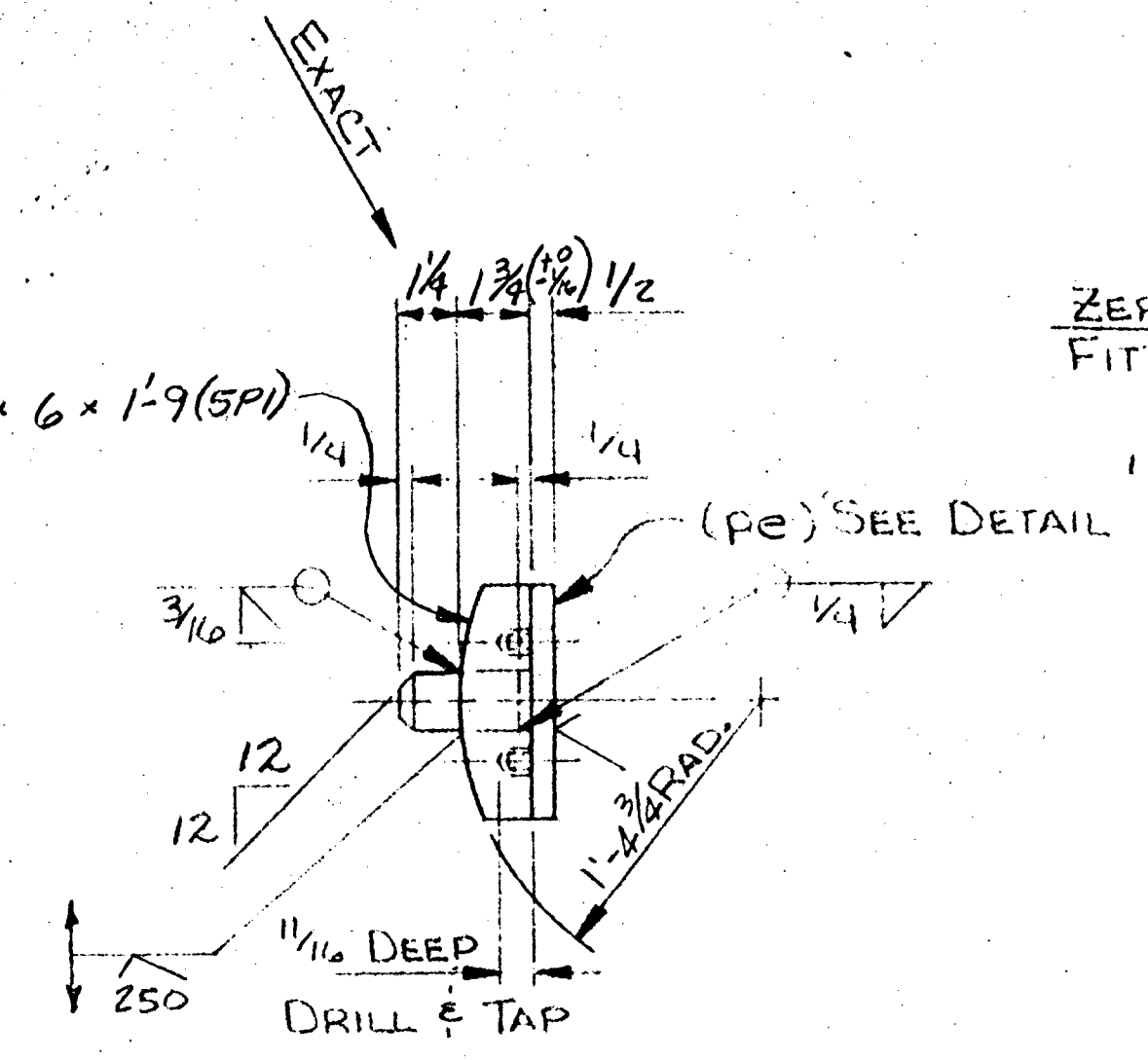
PROJ. FILE

LEWIS ENGINEERING COMPANY
4201 NOREX DR., CHASKA, MN

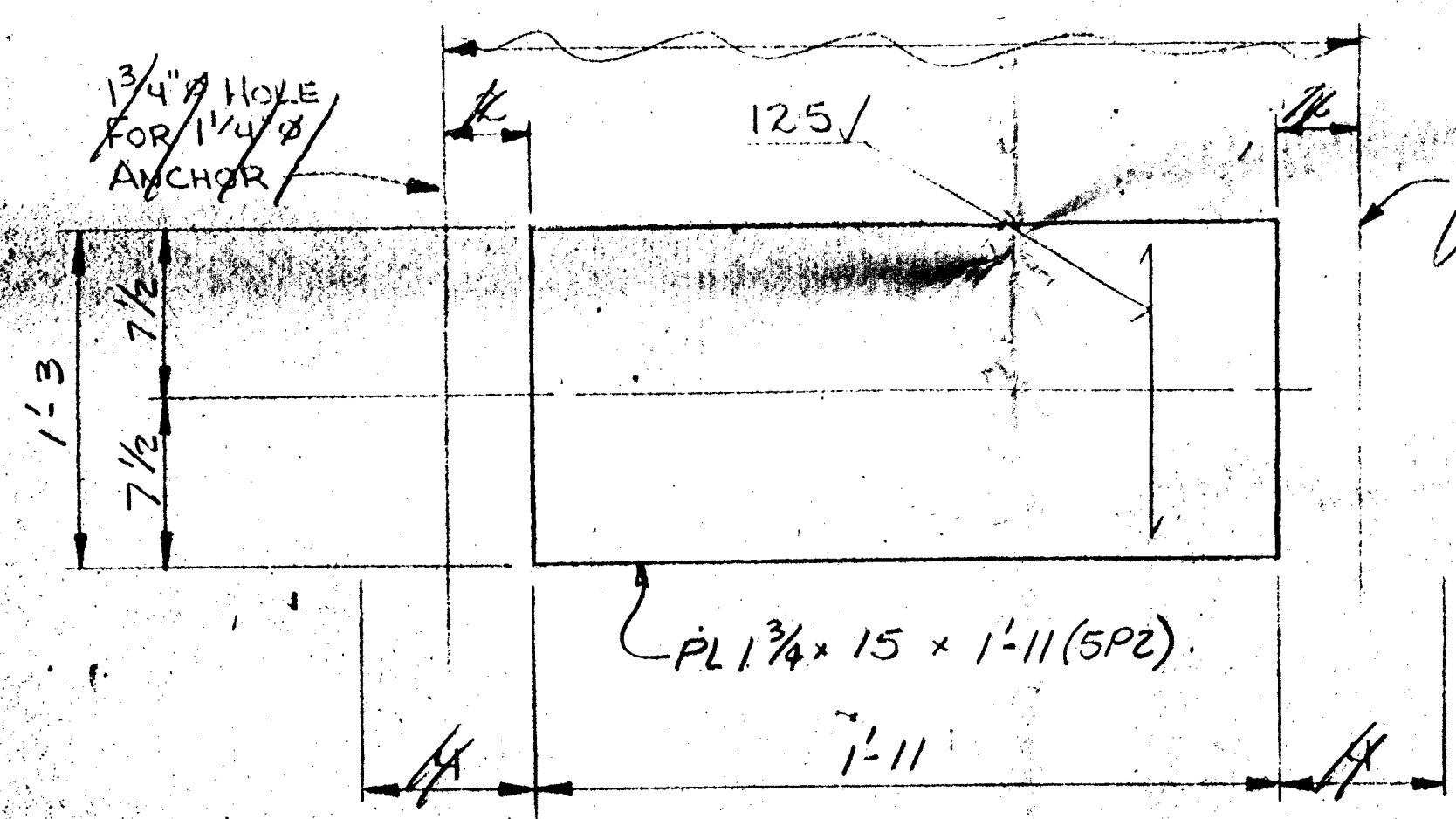
PROJECT - BRIDGE No. 0257
STATE PROJECT - 02-602-09
FEDERAL PROJECT -
CUSTOMER - PROGRESSIVE COMPANY
LOCATION - ANOKA CO, MN
DESCRIPTION - EXPANSION BRG
W/O CURB & SIDEWALK



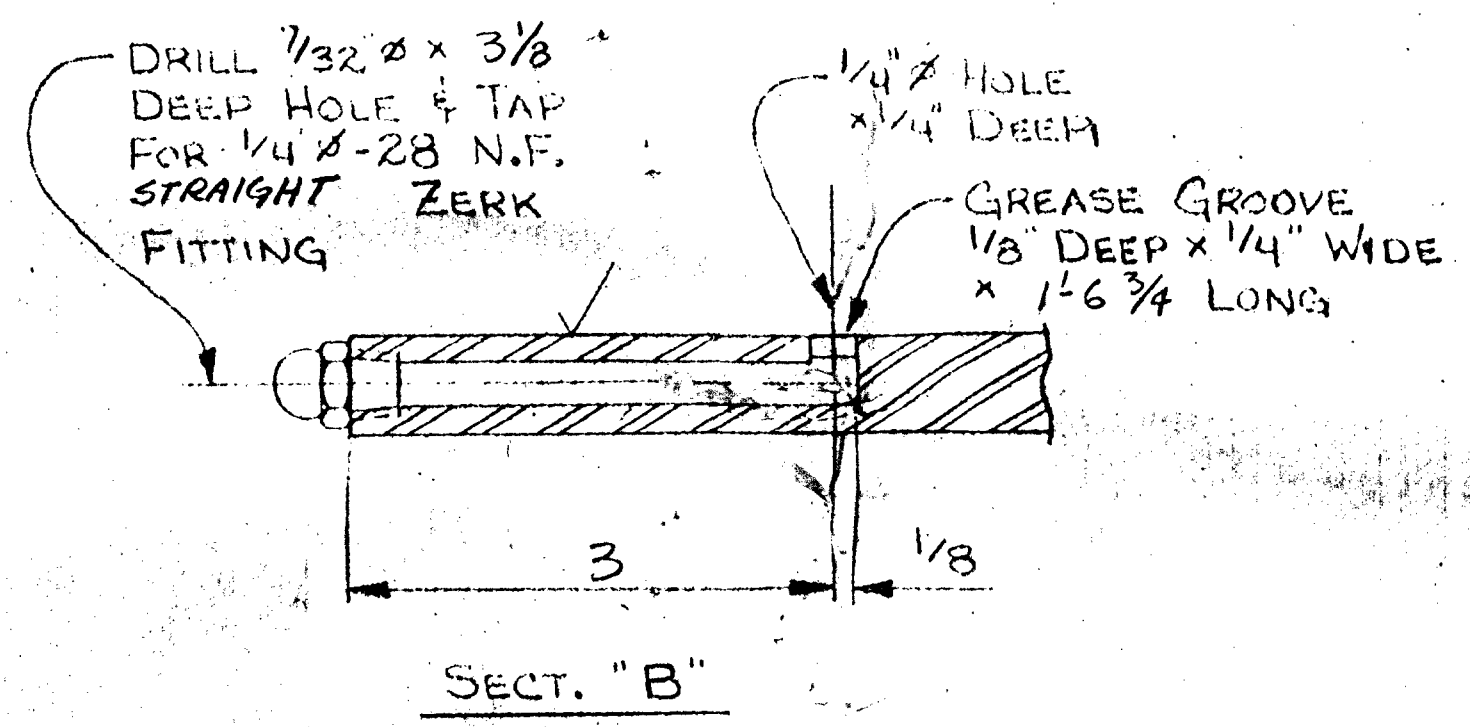
1-ASSEMBLY-5P1
(WITH LUBRICATED BRONZE R. (pe)
FASTENED IN PLACE)



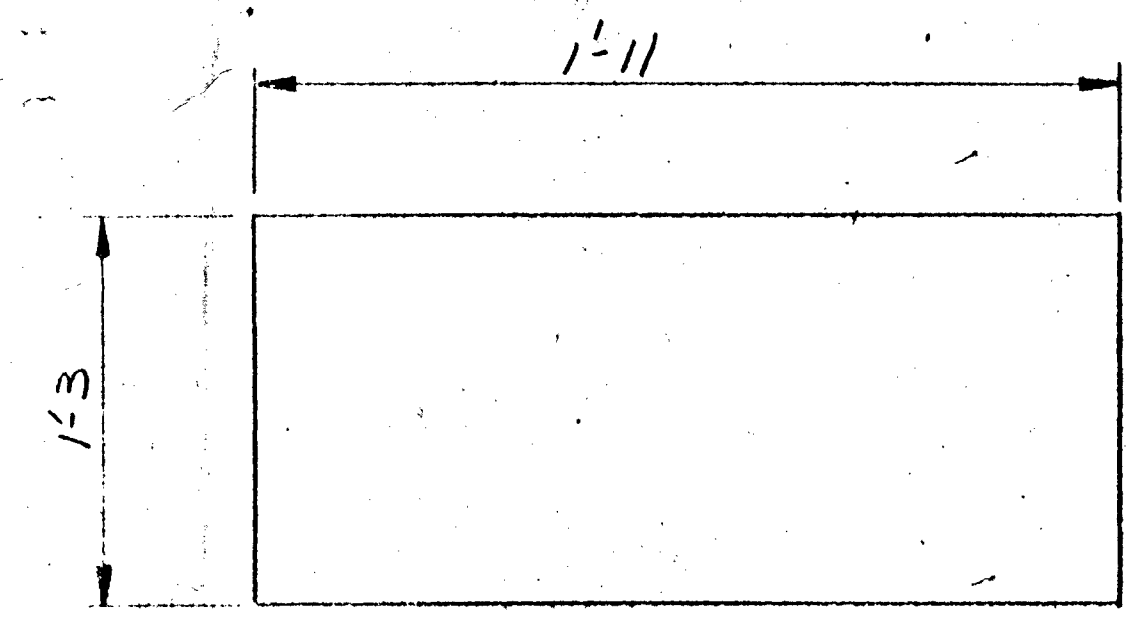
DETAIL LUBRICATED BRONZE R. - (pe)



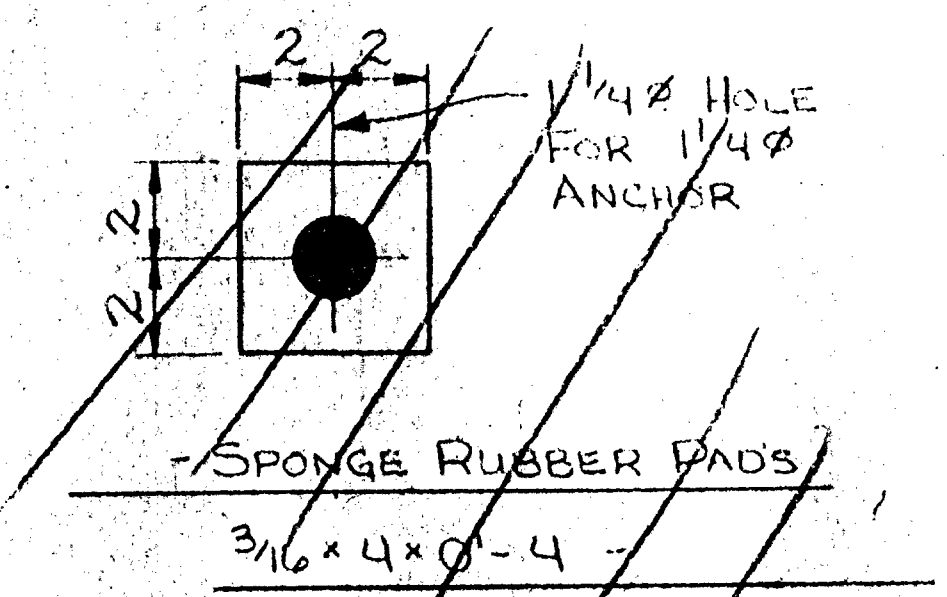
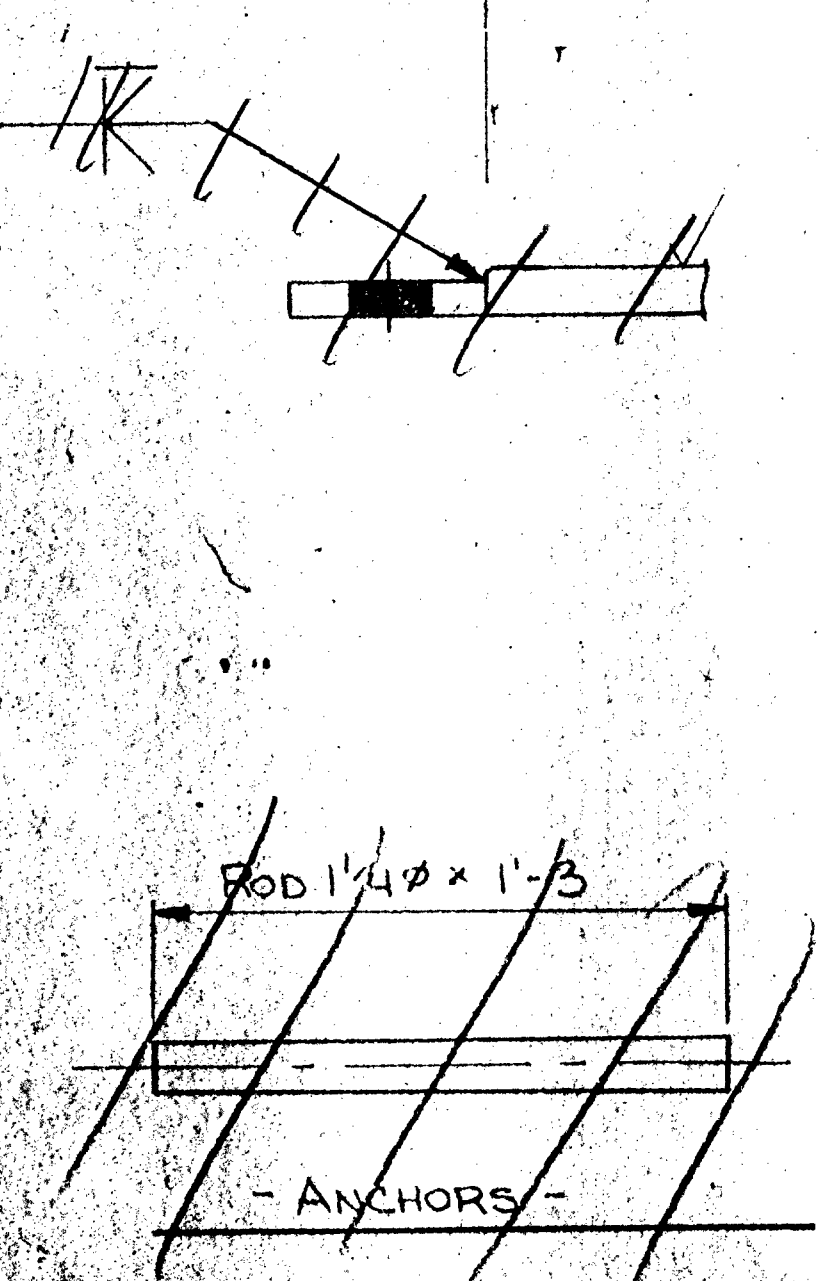
1 - BRG. R. WELDMENTS - 5P2



SECT. "B"



1 - SHEET LEAD 8# x 15 x 1'-11 - 5L3



Sponge Rubber Pads
3/16 x 4 x 0-4

LINE NO.	NO. RECD.	DESCRIPTION	LENGTH FT. (INCH)	MR.	REMARKS	NOTE
1						
2		1-ASSEMBLY-5P1				
3	1	R. 1-7/4 x 6	1'-9	5P1	MACH.	
4	2	RB 1-1/2 CP4140 ANLDG	0'-2-3/4	me	MN/DOT 3314 TYPE 1	
5	1	PL 1/2 x 6	1'-9	pe	MACH. - MN/DOT 3323	
6	12	MB 5/8 x 1 SLTD CT&K BRASS		XA		
7	2	M 1/2-28 STRAIGHT ZERK FITTING				
8						
9						
10						
11		1 - BRG. R. WELDMENTS - 5P2				
12	1	R. 1-3/4 x 15	1'-11	5P2	MACH.	
13		3/4 x 4	0'-4			
14						
15						
16						
17						
18						
19						
20						
21						
22		SPONGE RUBBER				
23		PADS 3/16 x 4	0'-4			
24						
25						
26						
27		1-SHEET LEAD 8# x 15	1'-11	5L3	MN/DOT 3335	
28		1 SL 1/8 x 15	1'-11	5L3		
29						
30						
31						
32						
33						
34						
35						
36						
37						
38						
39						
40						
41		GENERAL NOTES:				
42		1.) LUBRICATED BRONZE R. SHALL COMPLY WITH MN/DOT 3329, WITH LUBRICATED BRONZE R. RECEPT				
43		2.) ALL R'S, EXCEPT LUBRICATED BRONZE R. SHALL COMPLY WITH MN/DOT 3306.				
44		3.) PINTLES SHALL COMPLY WITH MN/DOT 3314 TYPE 1.				
45		4.) STEEL R'S, & PINTLES SHALL BE GALVANIZED PER MN/DOT 3394 AFTER FABRICATION.				
46		5.) ANCHOR RODS SHALL BE GALVANIZED PER MN/DOT 3394.				
47		6.) SHOP INSPECTION BY MN/DOT BEFORE AND AFTER GALVANIZING.				
48		7.) MATERIAL AND WORKMANSHIP SHALL BE IN ACCORDANCE WITH MN/DOT "STANDARD SPEC'S FOR HIGHWAY CONSTRUCTION" 1988 EDITION, THE SPECIAL PROVISIONS.				
49		8.) R. SHALL BE FLAT AFTER FAB & WELDING WITHIN 1/16".				
50		9.) ALL FINIS, RAGGED OR DISTORTED EDGES, BURRS, FINISHES FROM SHEARING, SPEED SAWING, OR FLAME CUTTING SHALL BE REMOVED. EDGE FINISH PER MN/DOT 2471.3C4 & 2741.3D4.				
51		10.) SHEET LEAD PER MN/DOT 3335.				
52						
53						
54						
55						
56						
57						
58						
59						
60						
61						
62						
63						

STATE OF MINNESOTA
Department of Transportation
NO OBJECTION TAKEN
MAY 10 1991
REVIEW IS FOR GENERAL COMPLIANCE
WITH PLANS AND SPECIFICATIONS
JOHN R. ALLEN
STRUCTURAL METALS ENGINEER

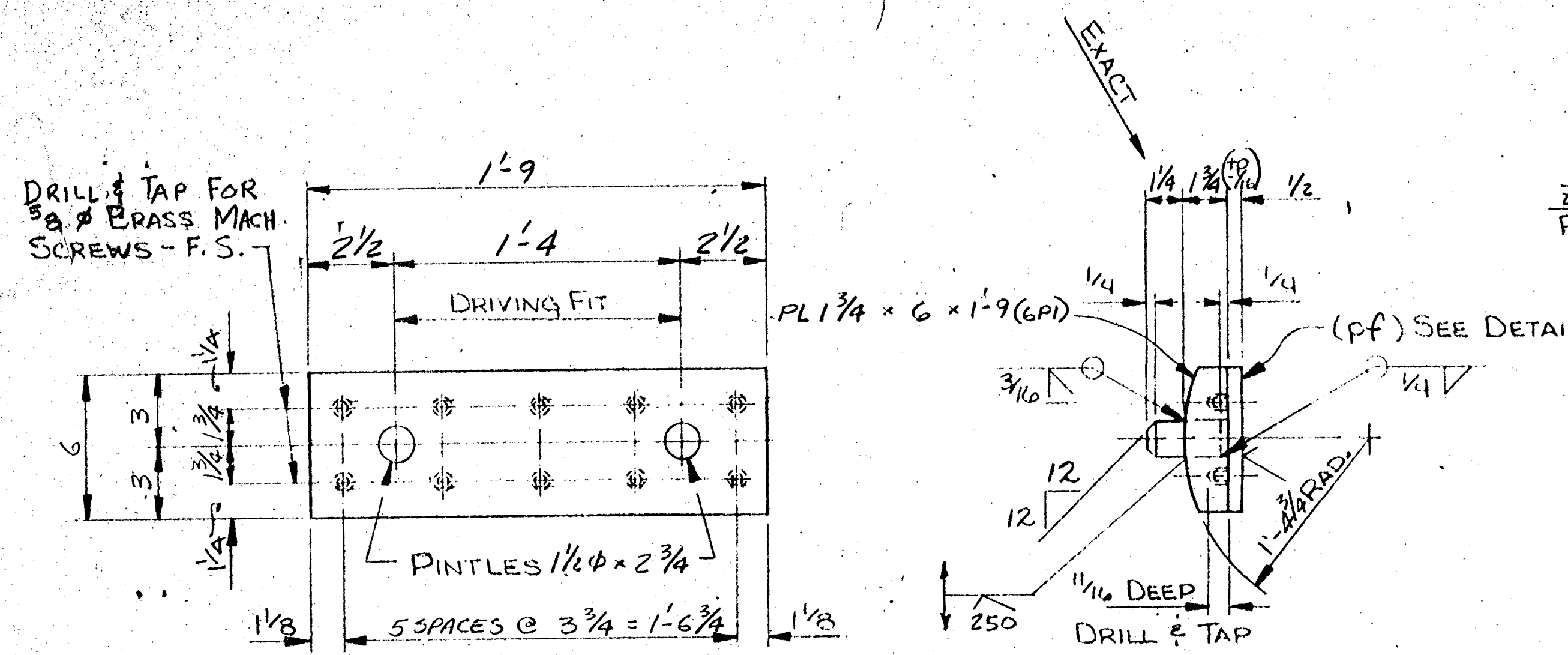
PROJ. FILE

LEWIS ENGINEERING COMPANY
4201 NOREX DR., CHASKA, MN

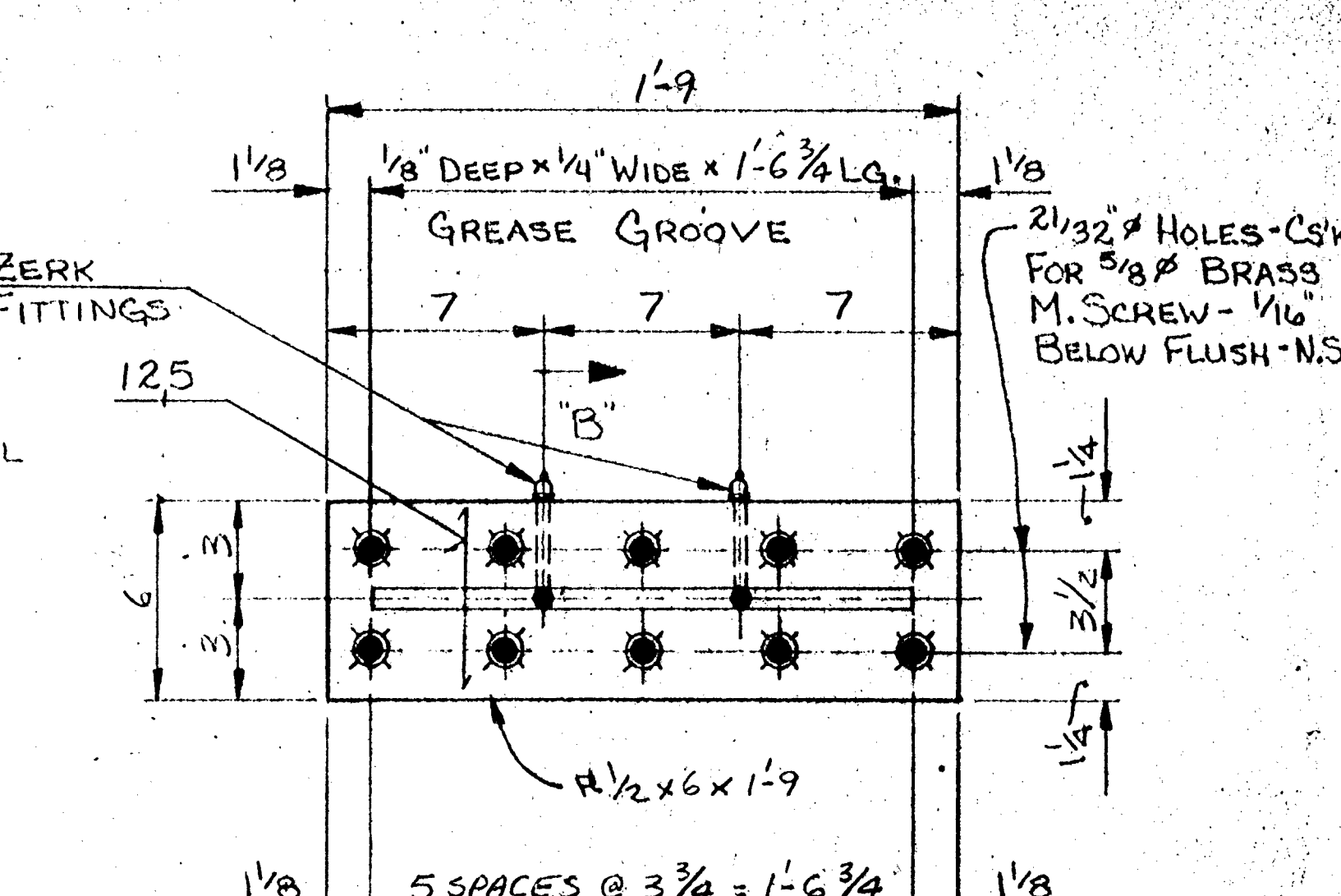
PROJECT - BRIDGE No. 02523
STATE PROJECT - 02-602-09
FEDERAL PROJECT -
CUSTOMER - PROGRESSIVE CONTRACTORS, INC.
LOCATION - ANOKA CO., MN

DESCRIPTION - EXPANSION BRG. ASSEMBLY
w/o GUIDE BARS
TYPE E-S
(Abut 1, Bm 1)

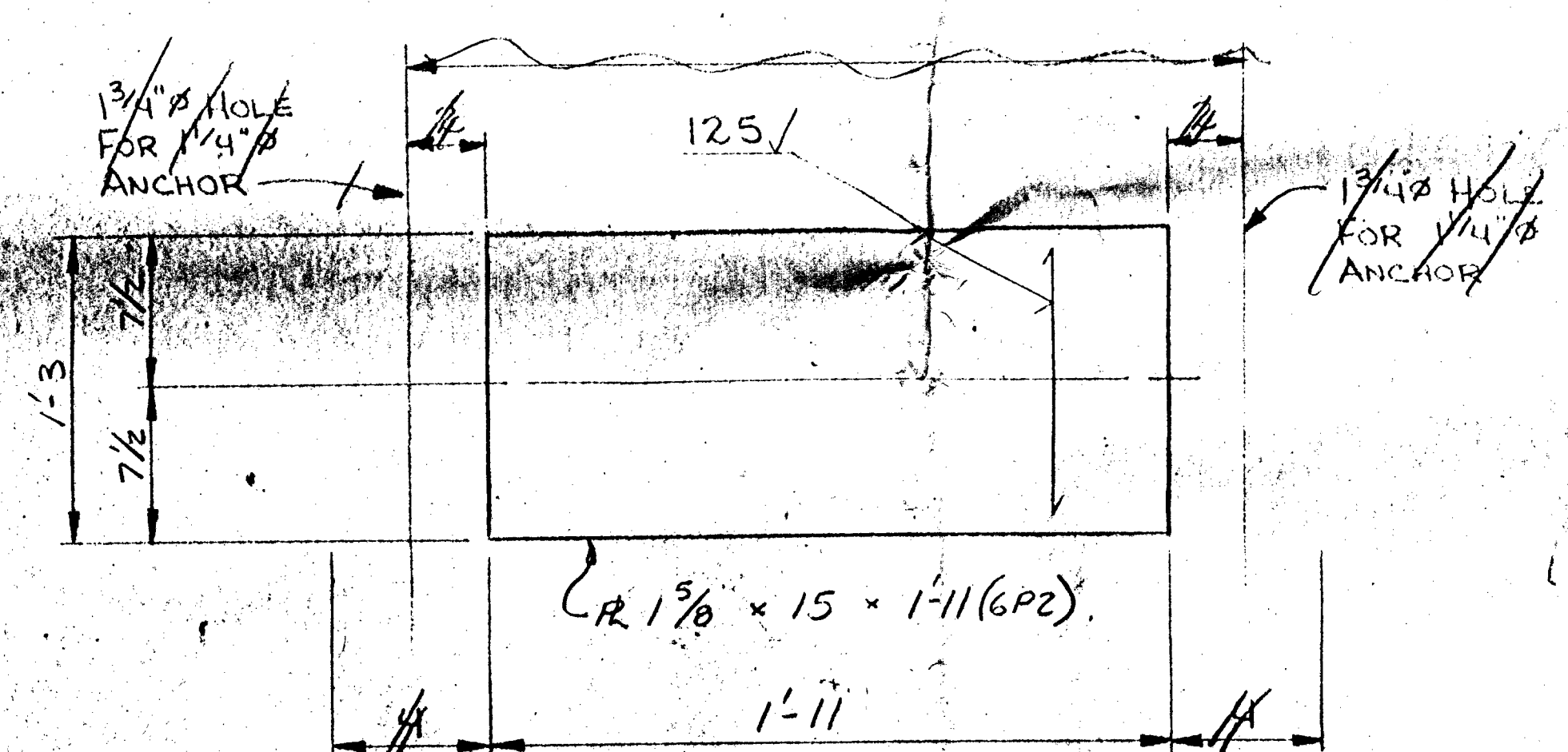
SHEET



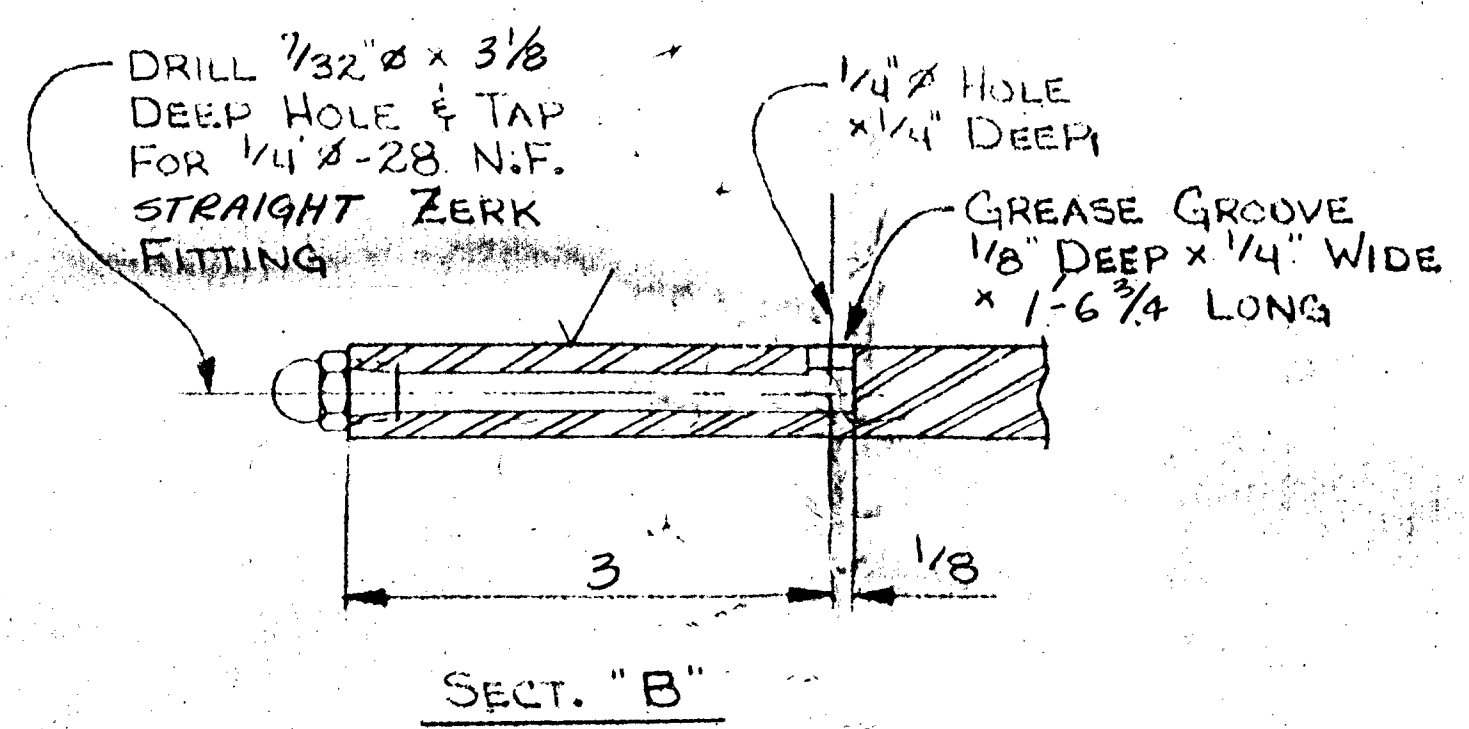
1- ASSEMBLY - GPI
(WITH LUBRICATED BRONZE R. (pf)
FASTENED IN PLACE)



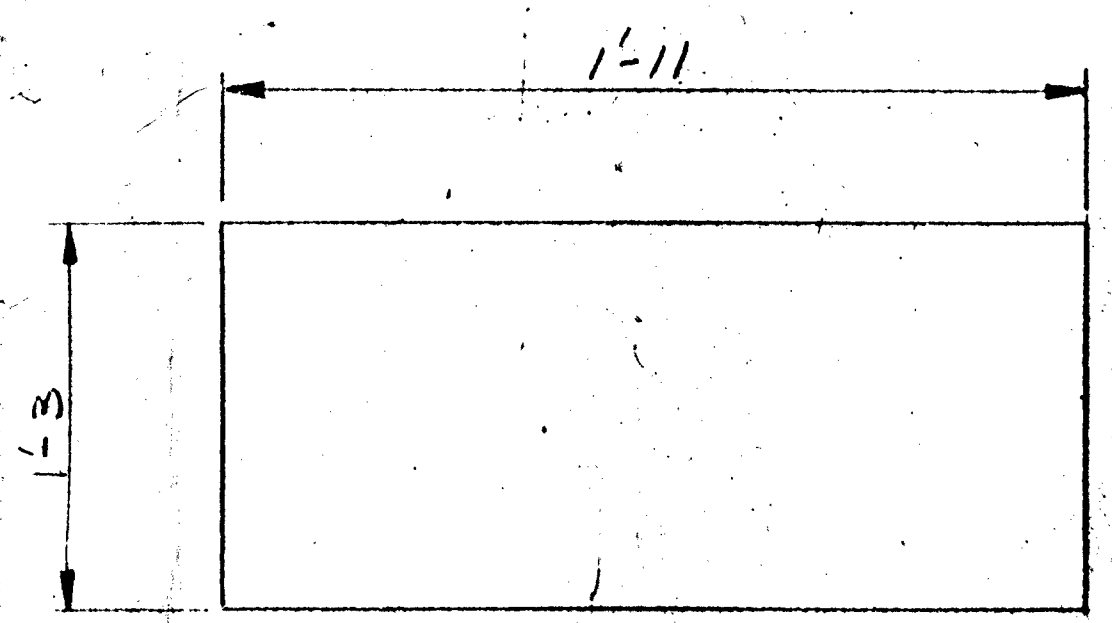
DETAIL LUBRICATED BRONZE R. - (pf)



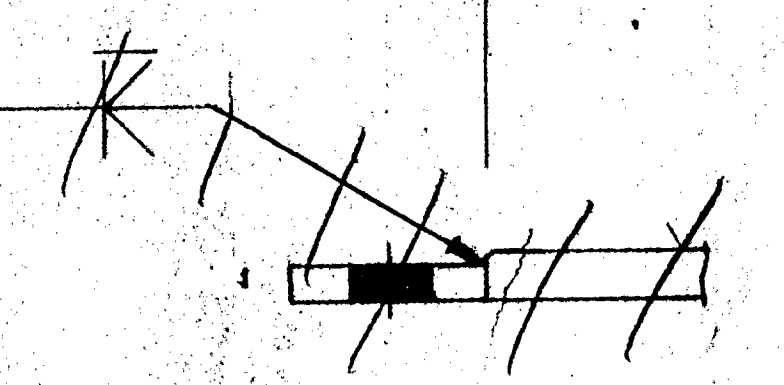
1 - BRG. R. WELDMENTS - GP2



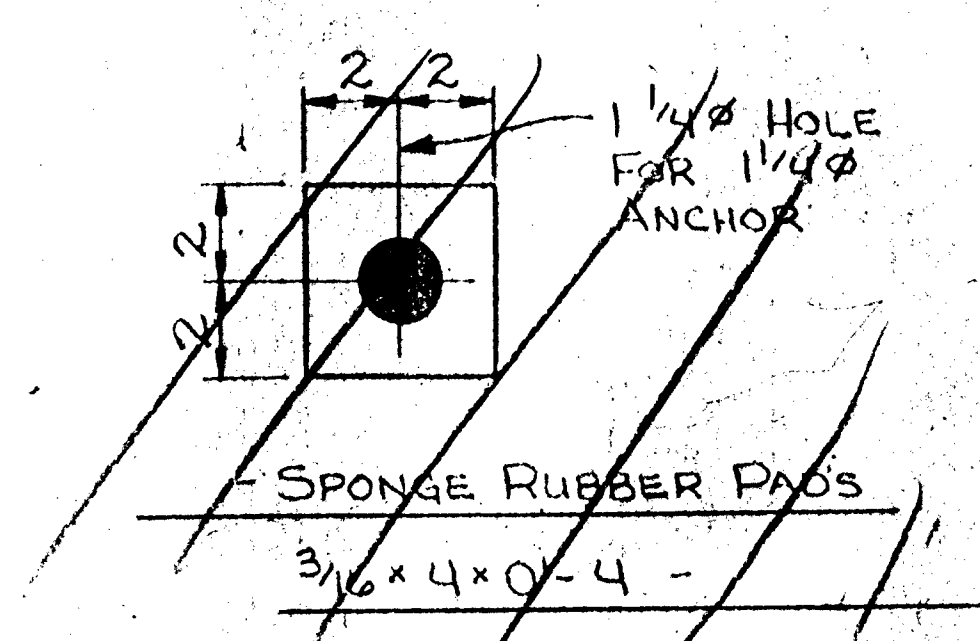
SECT. "B"



1 - SHEET LEAD 8# x 15 x 1'-11 - 6L3



ANCHORS



SPONGE RUBBER PADS

LINE NO.	RECD.	DESCRIPTION	LENGTH FT.	INCH	QTY	REMARKS	UNIT
1							
2		1- ASSEMBLY - GPI					
3	1	R1-3/4 x 6	1	9	6PI	MACH.	
4	2	R1-1/2 CFA140 ANLD G O	2	9	mf	MN/DOT 3314	
5	1	PL 1/2 x 6	1	9	pf	MACH. - MN/DOT 3329	
6	12	M8 3/8 x 1 5/16 CTSK BR13					
7	2	M1/4 - 28 STRAIGHT ZERK FITTING					
8							
9							
10							
11		1 - BRG. R. WELDMENTS - GP2					
12	1	R1-5/8 x 15	1	11	GP2	MACH.	
13		3/4 x 4					
14							
15							
16							
17							
18							
19							
20							
21							
22		SPONGE RUBBER					
23		PADS - 3/16 x 4			4		
24							
25							
26							
27		1 - SHEET LEAD 8# x 15					
28		1 SL 1/8 x 15			6L3		
29							
30							
31							
32							
33							
34							
35							
36							
37							
38							
39							
40							
41		GENERAL NOTES:					
42		1.) LUBRICATED BRONZE R. SHALL BE FASTENED WITH					
43		MN/DOT 3329, WITH LUBRICATED BRONZE R. SHEET					
44		2.) ALL R's. EXCEPT LUBRICATED BRONZE R. SHEET					
45		SHALL COMPLY WITH MN/DOT 3329.					
46		3.) PINTLES SHALL COMPLY WITH MN/DOT 3314.					
47		4.) STEEL R's. & PINTLES SHALL BE GALVANIZED					
48		MN/DOT 3394 AFTER FABRICATION.					
49		5.) ANCHOR RODS SHALL BE GALVANIZED PER MN/DOT 3394.					
50		6.) SHOP INSPECTION BY MN/DOT ENGINEER AND/OR QUALITY					
51		CONTROL ENGINEER SHALL BE REQUIRED.					
52		7.) MATERIAL AND WORKMANSHIP SHALL BE IN ACCORDANCE					
53		WITH MN/DOT STANDARD SPECIFICATIONS FOR BRIDGE					
54		CONSTRUCTION, 1983 EDITION, THE SPECIAL PROVISIONS					
55		8.) R's SHALL BE FLAT AFTER FAB & WELDING WITH NO					
56		9.) ALL FINIS, RAGGED OR DISTORTED EDGES SHALL BE					
57		FROM SHEARING, SHEAR SAWING OR FLAME CUTTING					
58		SHALL BE REMOVED, EDGE FINISH PER MN/DOT					
59		2471-3C4 & 2741-3B4.					
60		10.) SHEET LEAD PER MN/DOT 3335.					
61							
62							
63							

PROJ. FILE

LEWIS ENGINEERING COMPANY
4201 NOREX DR., CHIASKA, MN

PROJECT - BRIDGE No. 02525
STATE PROJECT - 02-608-09
FEDERAL PROJECT -
CUSTOMER - PROGRESSIVE CONTRACTORS
LOCATION - ANDRAG CO, MN

DESCRIPTION - EXPANSION BRG. SLIDE
W/3 GUIDE BRG.
(Adv. by Bm E)

DATE: MAY 10 1991
REVIEW IS FOR GENERAL COMPLIANCE WITH PLANS AND SPECIFICATIONS JOHN R. ALLEN STRUCTURAL METALS ENGINEER

SHEET 01