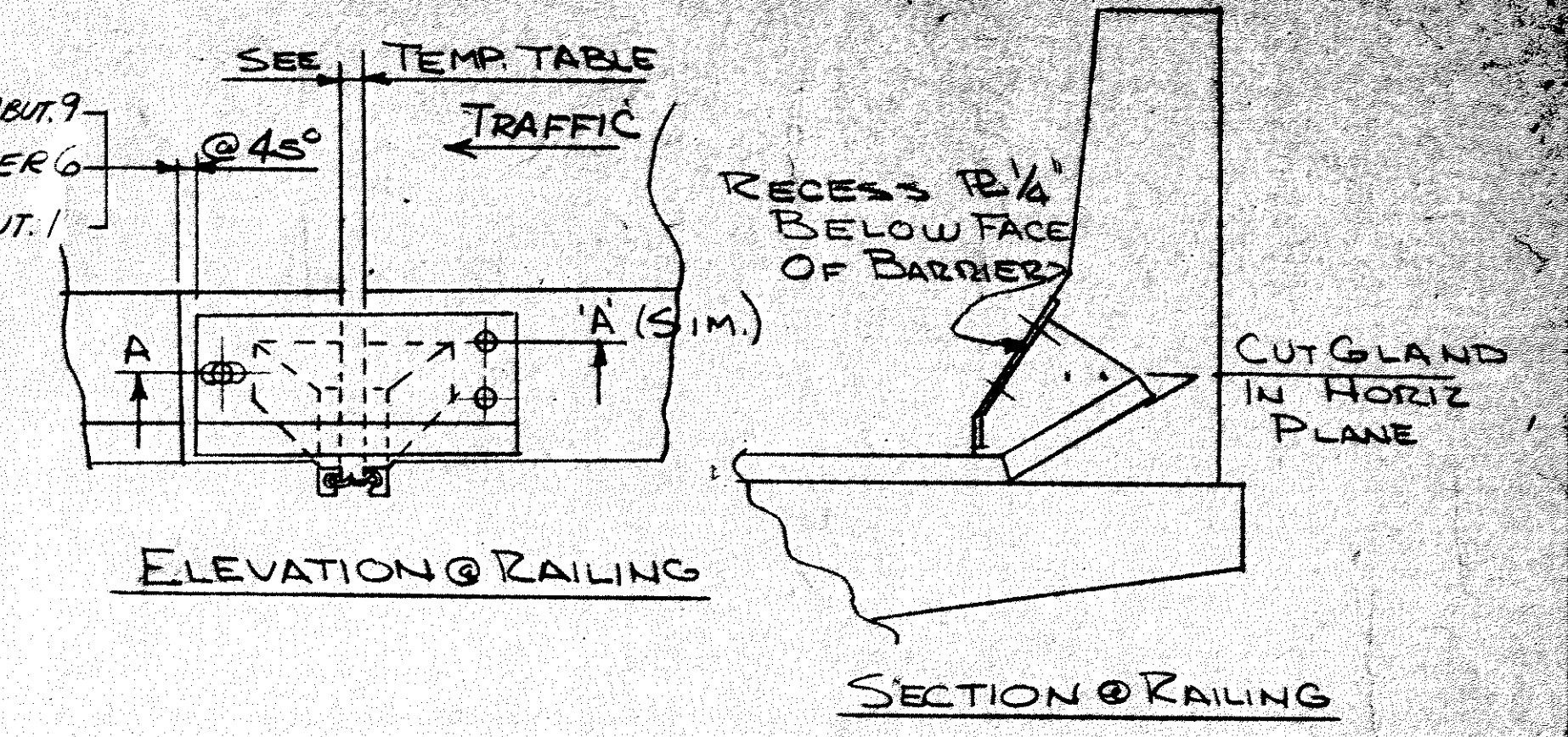
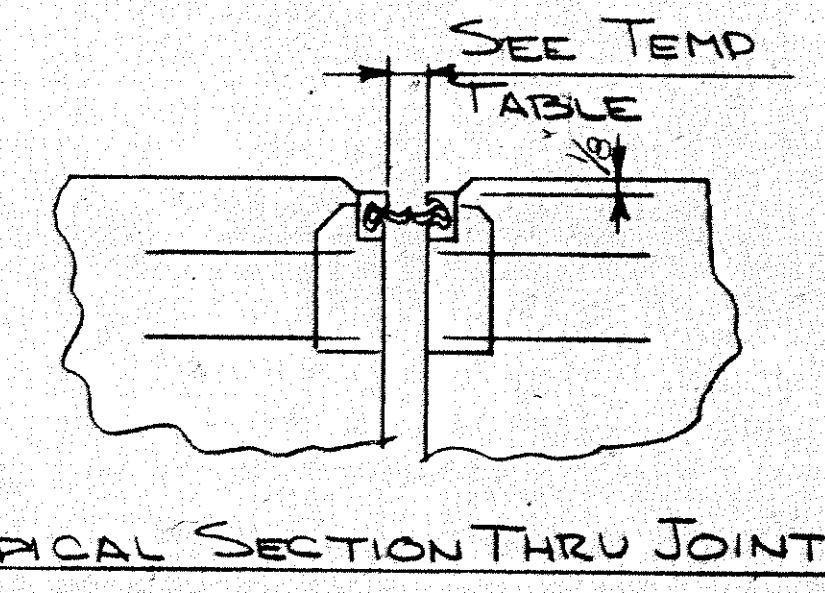


PLAN



ELEVATION @ RAILING

SECTION @ RAILING

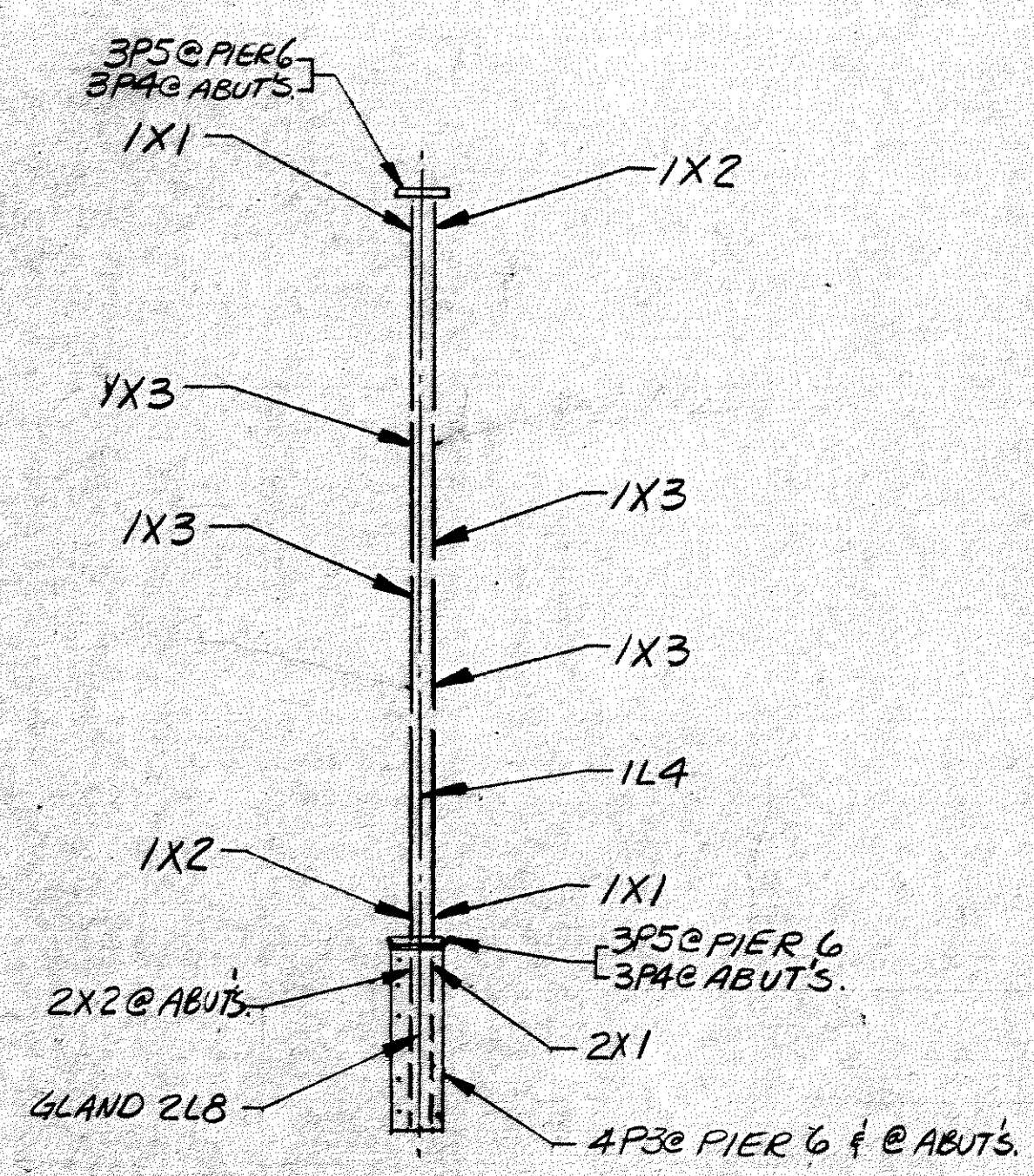


TYPICAL SECTION THRU JOINT

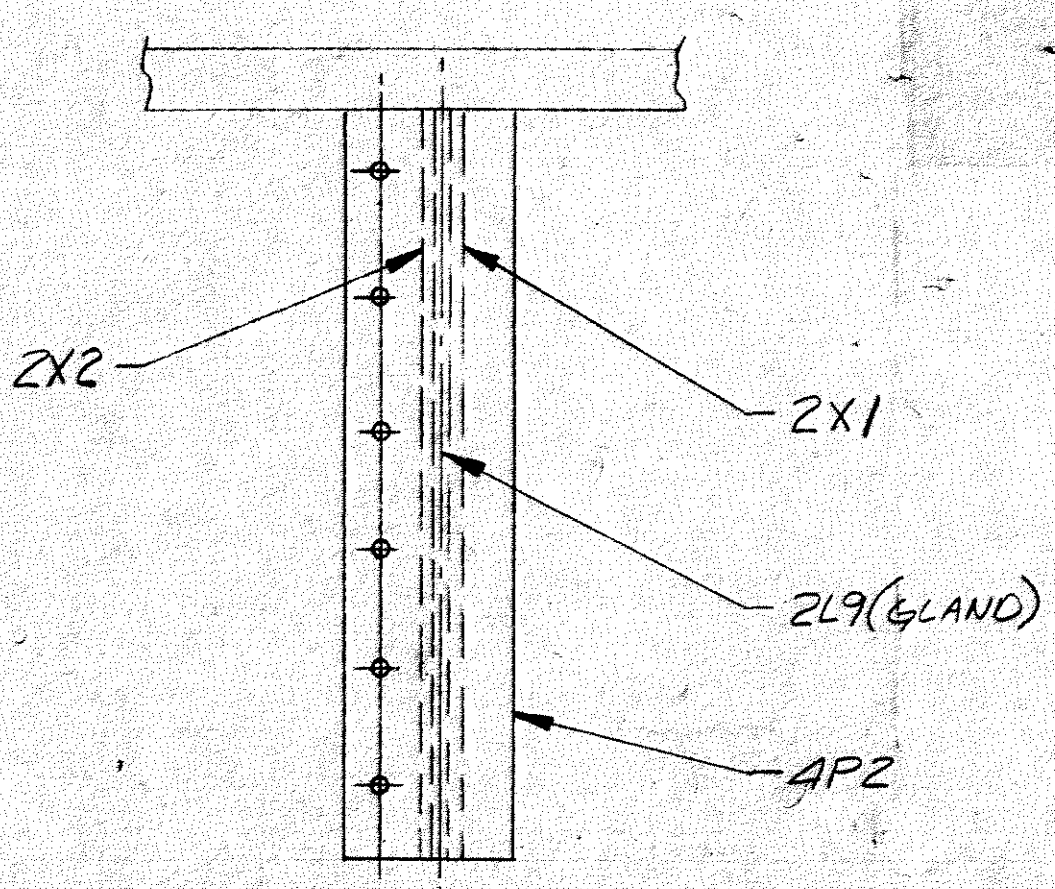
TEMP TABLE

TEMP.	OPNG.		
45°	2 1/2"	@ ABUT. 9	90° 1 3/4"
45°	2 1/2"	@ PIER 6	90° 1 1/4"
45°	2 1/2"	@ ABUT. 1	90° 2"

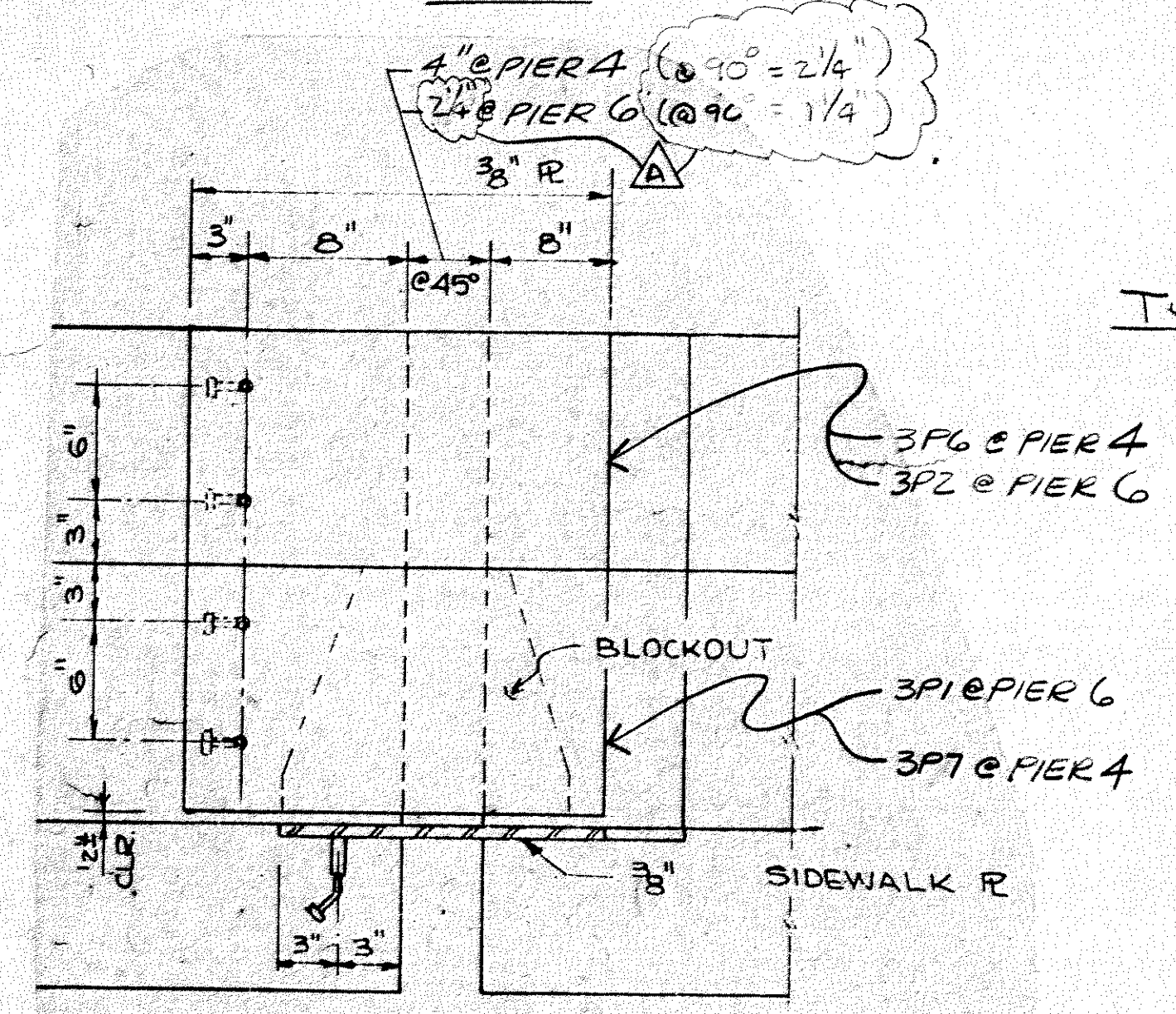
APPROVER PLEASE FURNISH OPNG. SIZE



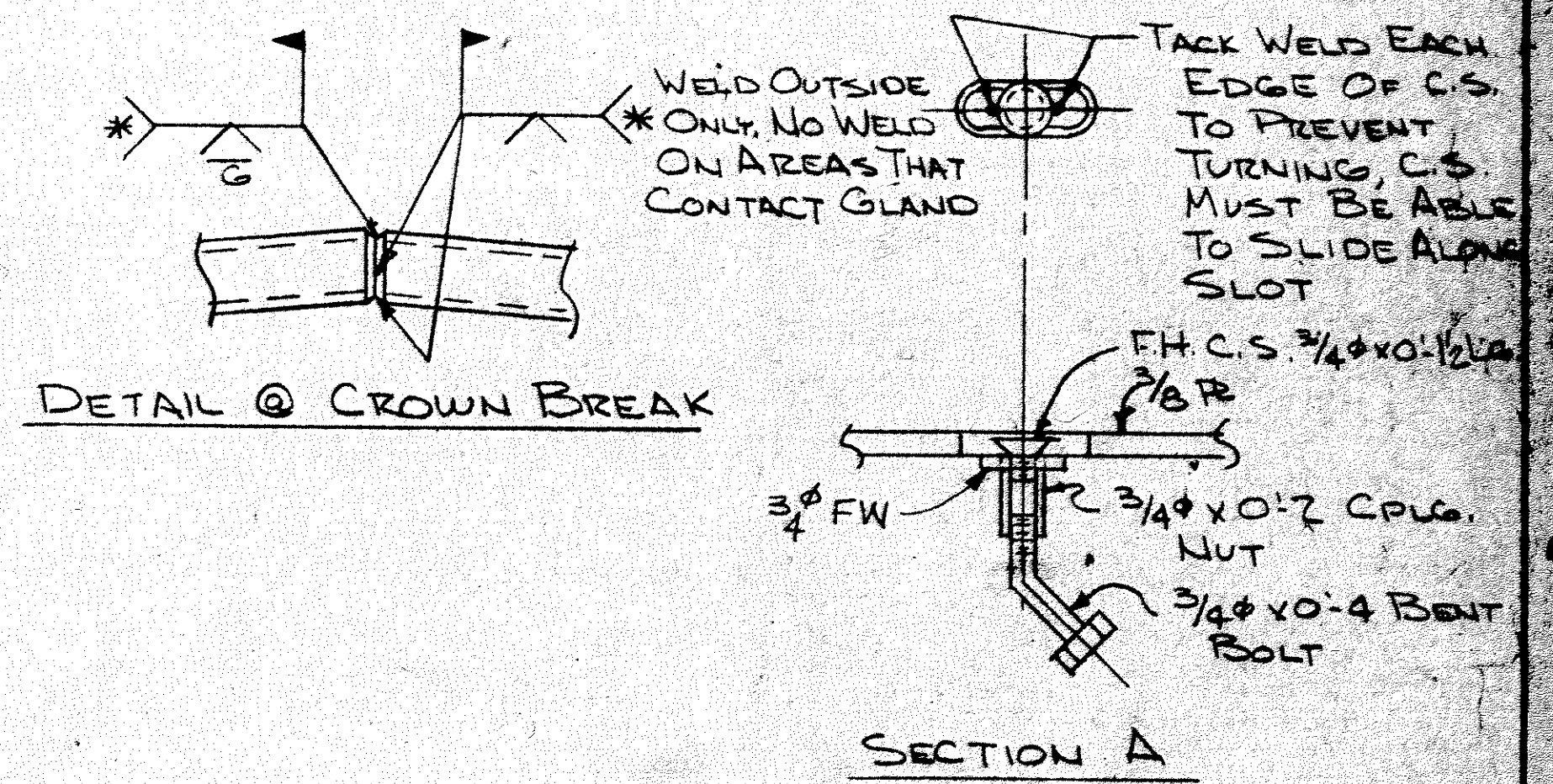
DETAIL A  
TYP. @ ABUT. 9, ABUT. 1, & PIER 6



DETAIL B  
PIER 4 ONLY

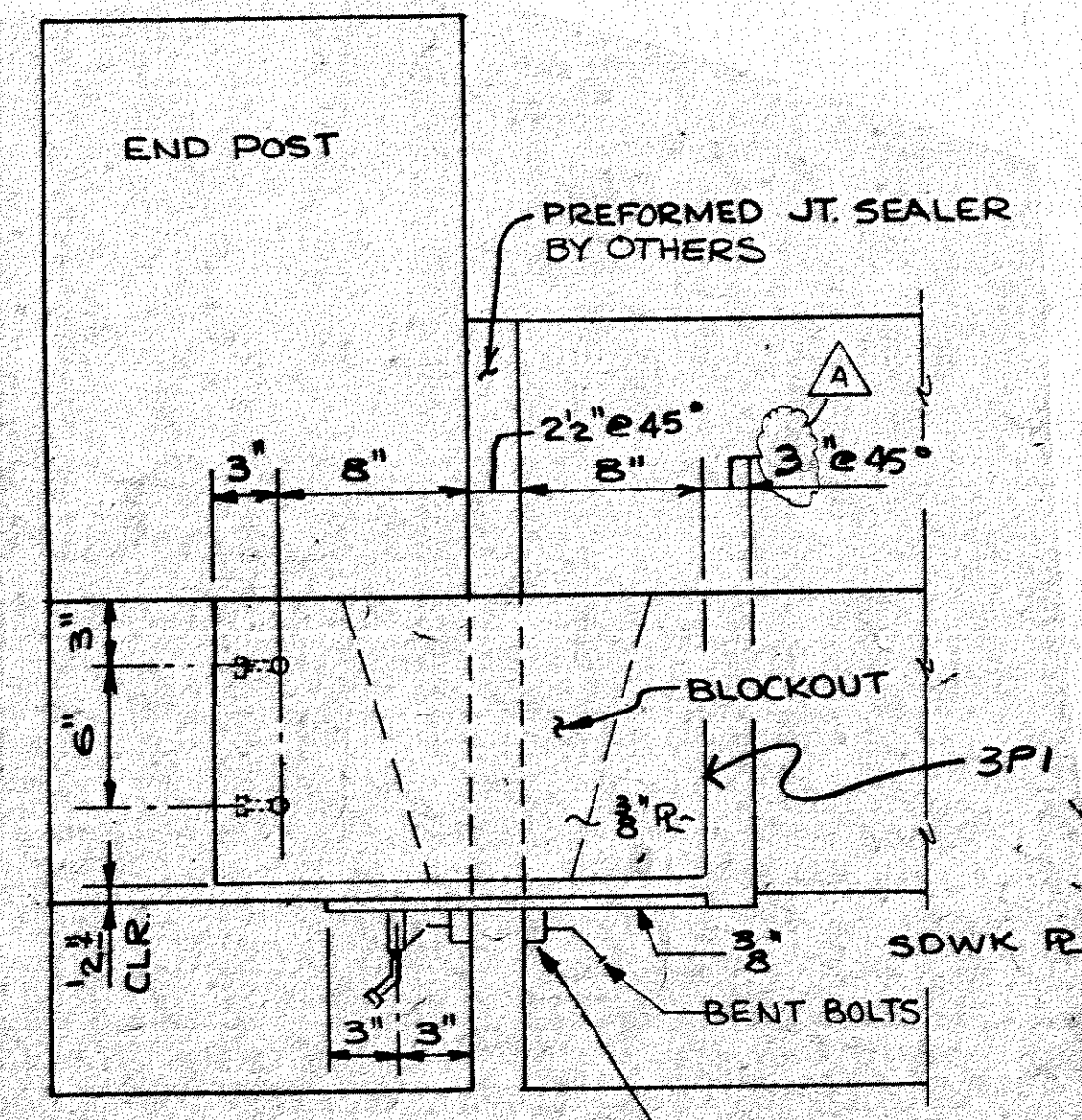


SECTION D-D



DETAIL @ CROWN BREAK

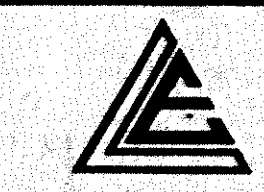
SECTION A



SECTION C-C

PROJ. FILE

3rd QTR DRAWING  
State of Minnesota  
Department of Transportation  
NO OBJECTION TAKEN  
MAY 10 1964  
REVIEW IS FOR GENERAL COMPLIANCE  
WITH PLANS AND SPECIFICATIONS  
JOHN A. LEWIS  
STRUCTURAL METALS ENGINEER

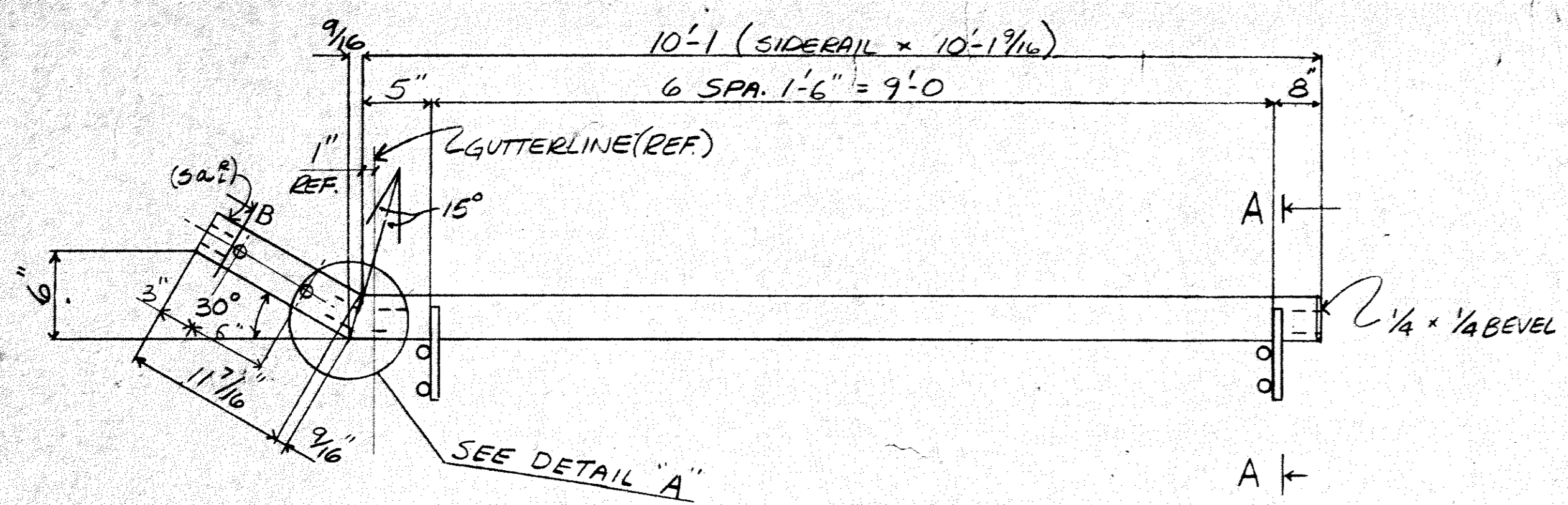


LEWIS ENGINEERING COMPANY  
4201 NOREX DRIVE - CHASKA, MINNESOTA 55318 - (612) 368-3000

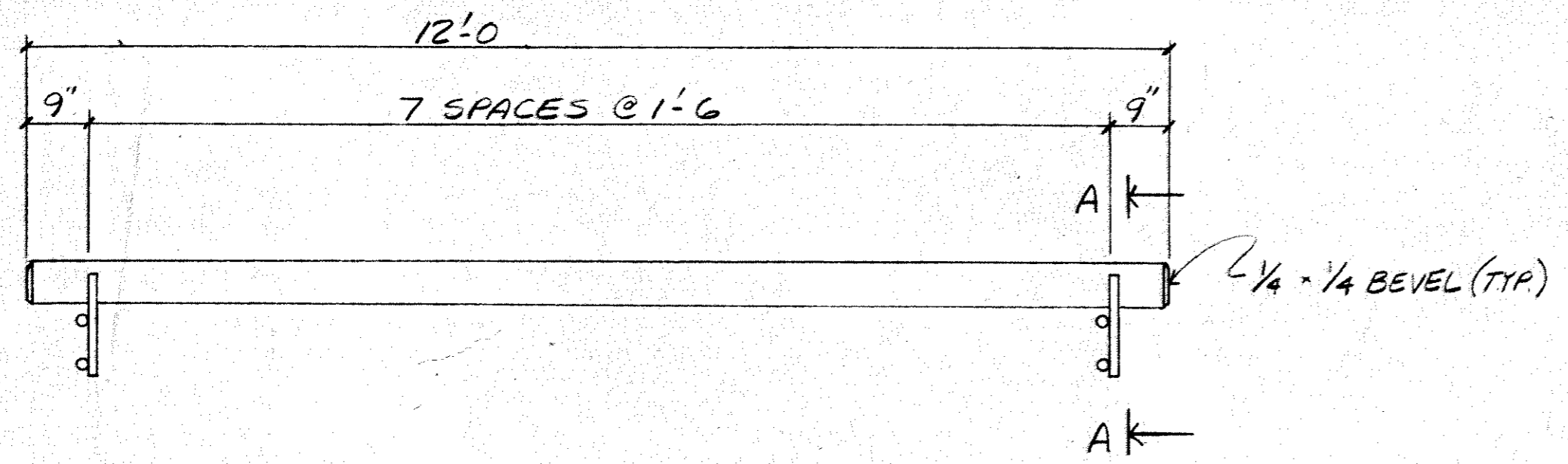
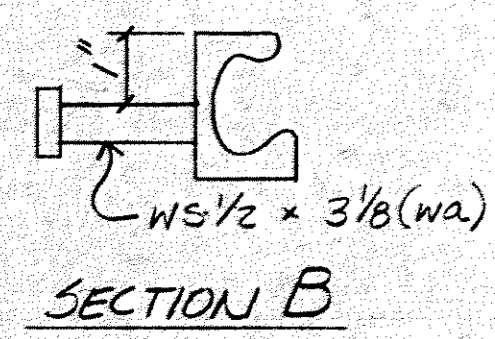
PROJECT	- BRIDGE NO. 02523
STATE PROJECT	- 02-602-09
FEDERAL PROJECT	-
CUSTOMER	- PROGRESSIVE CONTRACTORS, INC.
LOCATION	- ANOKA CO, MN.
DESCRIPTION	- ERECTION DWG.

Job No.  
8612-64  
Drawn By  
Checked By  
Approved

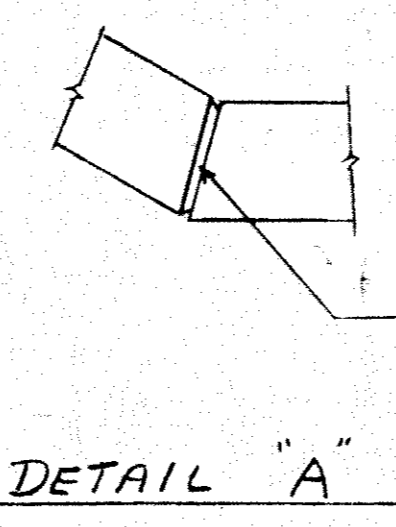




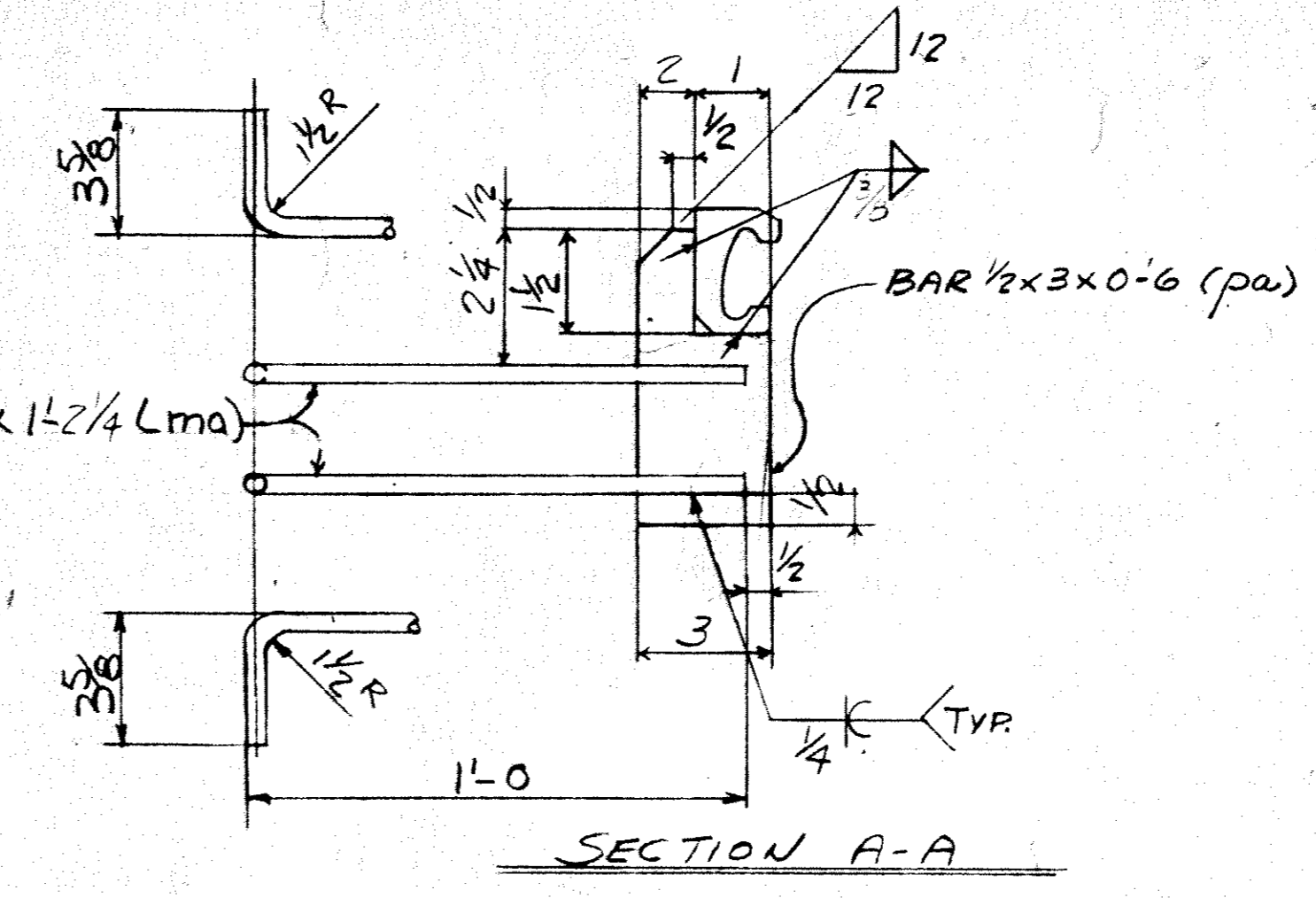
6 - SIDERAIL - 1X1 (SHOWN)  
6 - SIDERAIL - 1X2 (OPP)



12 - SIDERAIL - 1X3



DETAIL "A"



SECTION A-A

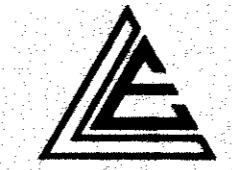
LINE NO.	RECD.	DESCRIPTION	LENGTH		MK	REMARKS	WGHT.	
			FT.	INCH				
1		6 - SIDERAIL - 1X1				G		
2		6 LE SIDERAIL TYPE W	10'	1-9/16	1X1			
3		6 DO	1'	0	sa			
4		42 FB 1/2 x 3	0'	6	pa	SHAPE CUT		
5		84 RB 5/8	1'	2-1/4	ma	BEND		
6		12 WS 1/2 x 3-1/2			wa			
7		6 - SIDERAIL - 1X2				G		
8		6 LE SIDERAIL TYPE W			1X2			
9		6 DO			sa			
10		42			pa	SHAPE CUT		
11		84			ma	BEND		
12		12			wa			
13		12 - SIDERAIL - 1X3				G		
14		12 LE SIDERAIL TYPE W			1X3			
15		96			pa	SHAPE CUT		
16		192			ma	BEND		
17								
18		3 LE NEOPRENE GLAND L400	46'	6"	HLA			
19		3 M1 1/2 GAL LUBRICATION			IAS			
20								
21								
22								
23								
24								
25								
26								
27								
28								
29								
30								
31								
32								
33								
34								
35								
36								
37								
38								
39								
40								
41								
42		GENERAL NOTES:						
43		1. MATERIAL - MN. DOT - 3306 (ASTM A36)						
44		2. GALV. EXP. DEVICES MN. DOT. 3394						
45		3. GALV. CURB RS MN. DOT. 3394						
46		4. GALV. FASTENERS MN. DOT. 3392						
47		5. CURB RS TO BE FLAT AFTER GALV.						
48		6. SHOP INSPECTION BY MN. D.O.T. BEFORE AND AFTER GALVANIZING						
49		7. MATERIAL & WORKMANSHIP IN ACCORD WITH THE 1988 EDITION OF THE MN/DOT STANDARD SPECS FOR HIGHWAY CONSTRUCTION AND THE SPECIAL PROVISIONS						
50		8. SIDERAIL TO BE LENCOTYPE						
51		9. NEOPRENE GLAND LENCOTYPE L400						
52								
53								
54								
55								
56								
57								
58								
59								
60								
61								
62								
63								

SHOP DRAWING  
State of Minnesota  
Department of Transportation  
NO OBJECTION TAKEN

MAY 10 1991

REVIEW IS FOR GENERAL COMPLIANCE WITH PLANS AND SPECIFICATIONS  
JOHN R. ALLEN  
STRUCTURAL METALS ENGINEER

**PROJ. FILE**

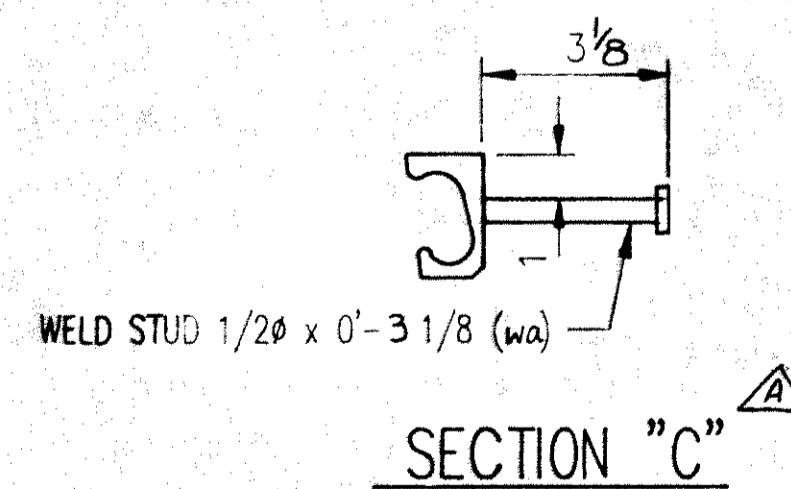
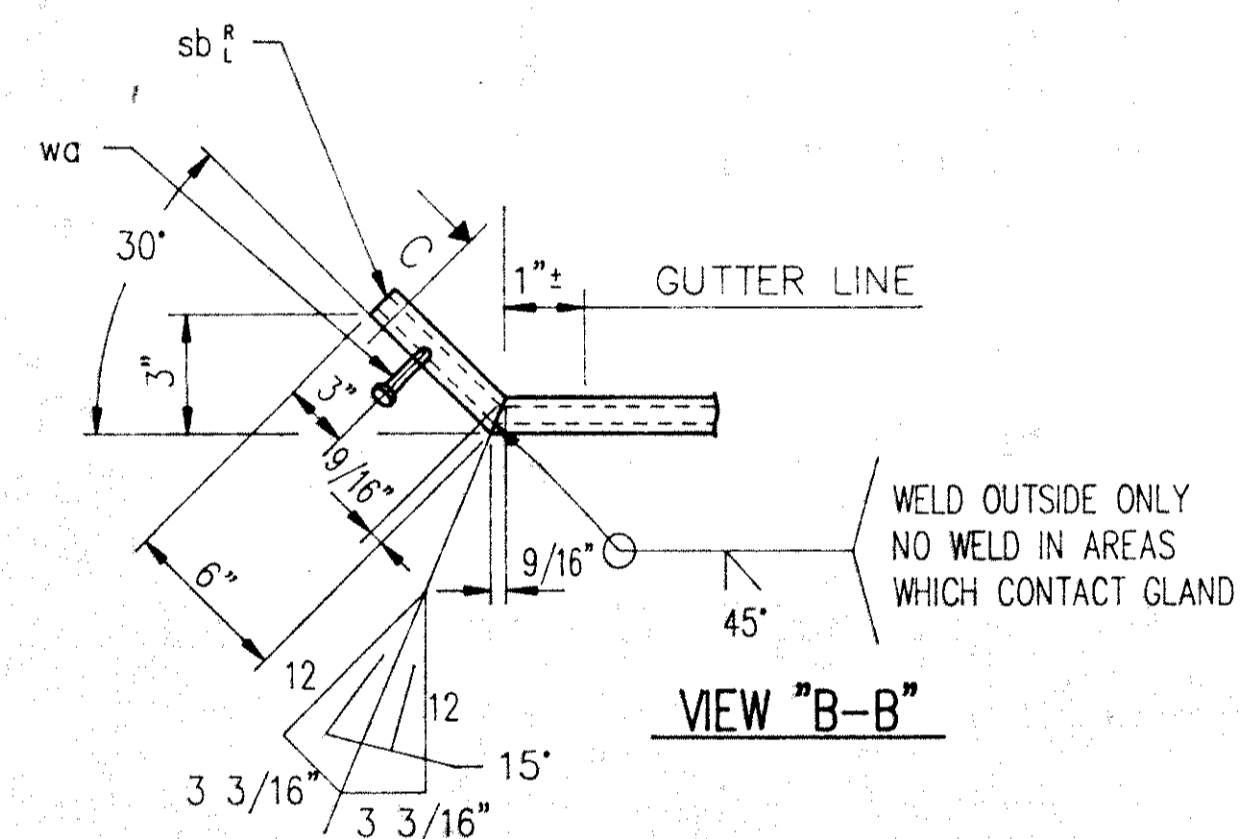
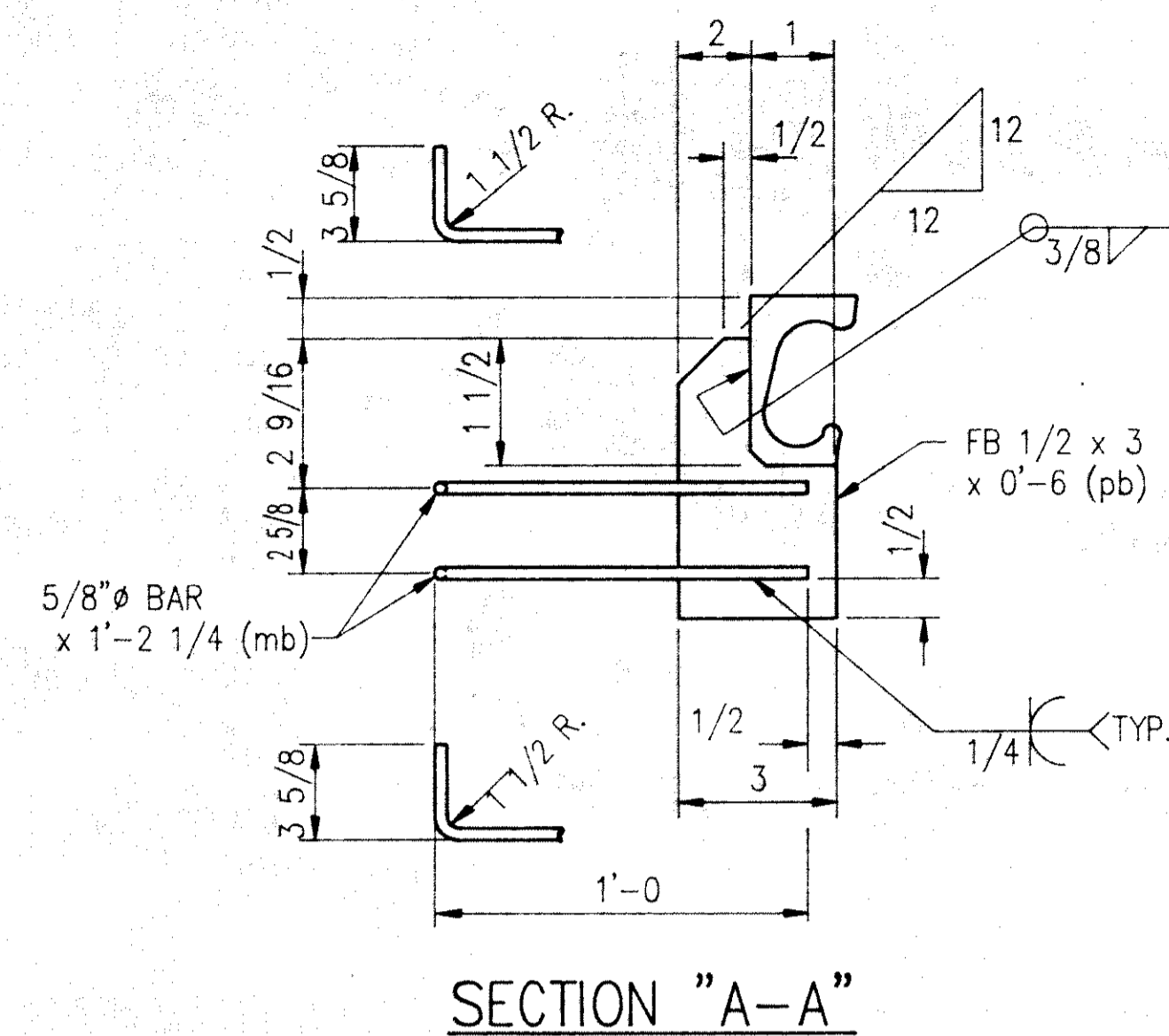
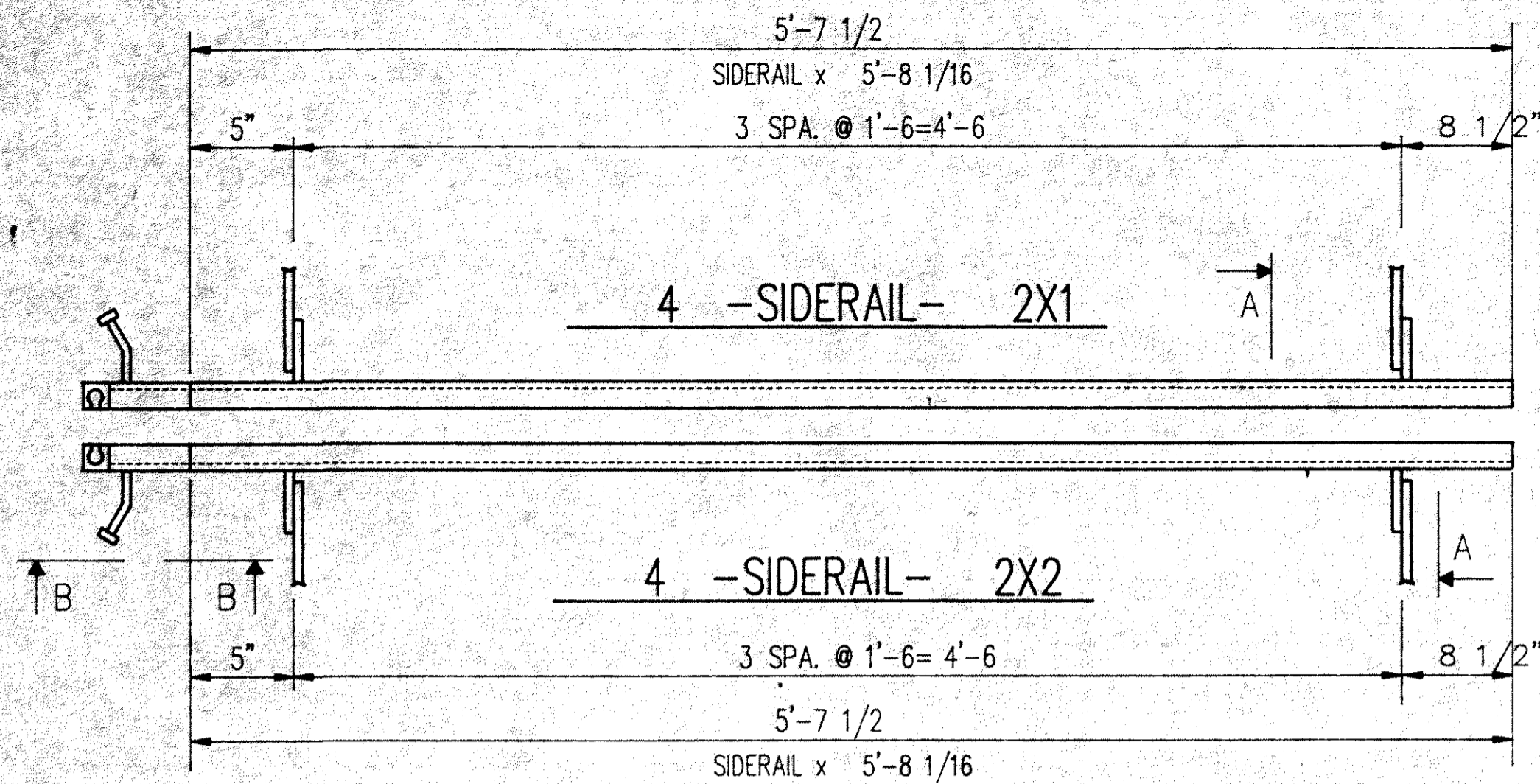


**LEWIS ENGINEERING COMPANY**  
5229 EDEN AVENUE - EDINA, MINNESOTA 55436 - (612) 820-6181

PROJECT - BRIDGE NO. 02523  
STATE PROJECT - 02-602-09  
FEDERAL PROJECT - -  
CONTRACTOR - PROGRESSIVE CONTRACTORS, INC.  
LOCATION - ANOKA CO., MN  
DESCRIPTION - EXPANSION JOINTS

Job No. 8672  
Date: 5/10/91





LINE NO.	NO. REQ'D.	DESCRIPTION	LENGTH	MK	REMARKS	WGHT.
1		4 - SIDERAIL - 2X1			G	
2	4	LE SIDERAIL TYPE W	5' 8-1/16"	2X1		
3	4	LE SIDERAIL TYPE W	5' 8-1/16"	sb*		
4	16	FB 1/2 x 3	0' 6"	pb	SHAPE CUT	
5	32	RB 5/8	1' 2-1/4"	mb	BEND	
6	4	WS 1/2 x 3-1/8		wa	BEND	
7						
8		4 - SIDERAIL - 2X2			G	
9	4	LE SIDERAIL TYPE W	5' 8-1/16"	2X2		
10	4	LE SIDERAIL TYPE W	5' 8-1/16"	sb*		
11	16	FB 1/2 x 3	0' 6"	pb	SHAPE CUT	
12	32	RB 5/8	1' 2-1/4"	mb	BEND	
13	4	WS 1/2 x 3-1/8		wa	BEND	
14						
15						
16						
17						
18						
19						
20						
21						
22						
23						
24						
25						
26						
27						
28						
29						
30						
31						
32						
33						
34						
35						
36						
37						
38						
39						
40						
41						
42						
43						
44						
45						
46						
47	3	LE NEOGLAND L400	6' 2"	2L8		
48	1	LE NEOGLAND L800	6' 3"	2L9		
49						
50						
51						
52						
53						
54						
55						
56						
57						
58						
59						
60						
61						
62						

SHOP DRAWING  
 State of Minnesota  
 Department of Transportation  
 NO OBJECTION TAKEN  
 MAY 10 1991  
 REVIEW IS FOR GENERAL COMPLIANCE  
 WITH PLANS AND SPECIFICATIONS  
 JOHN R. ALLEN  
 STRUCTURAL METALS ENGINEER

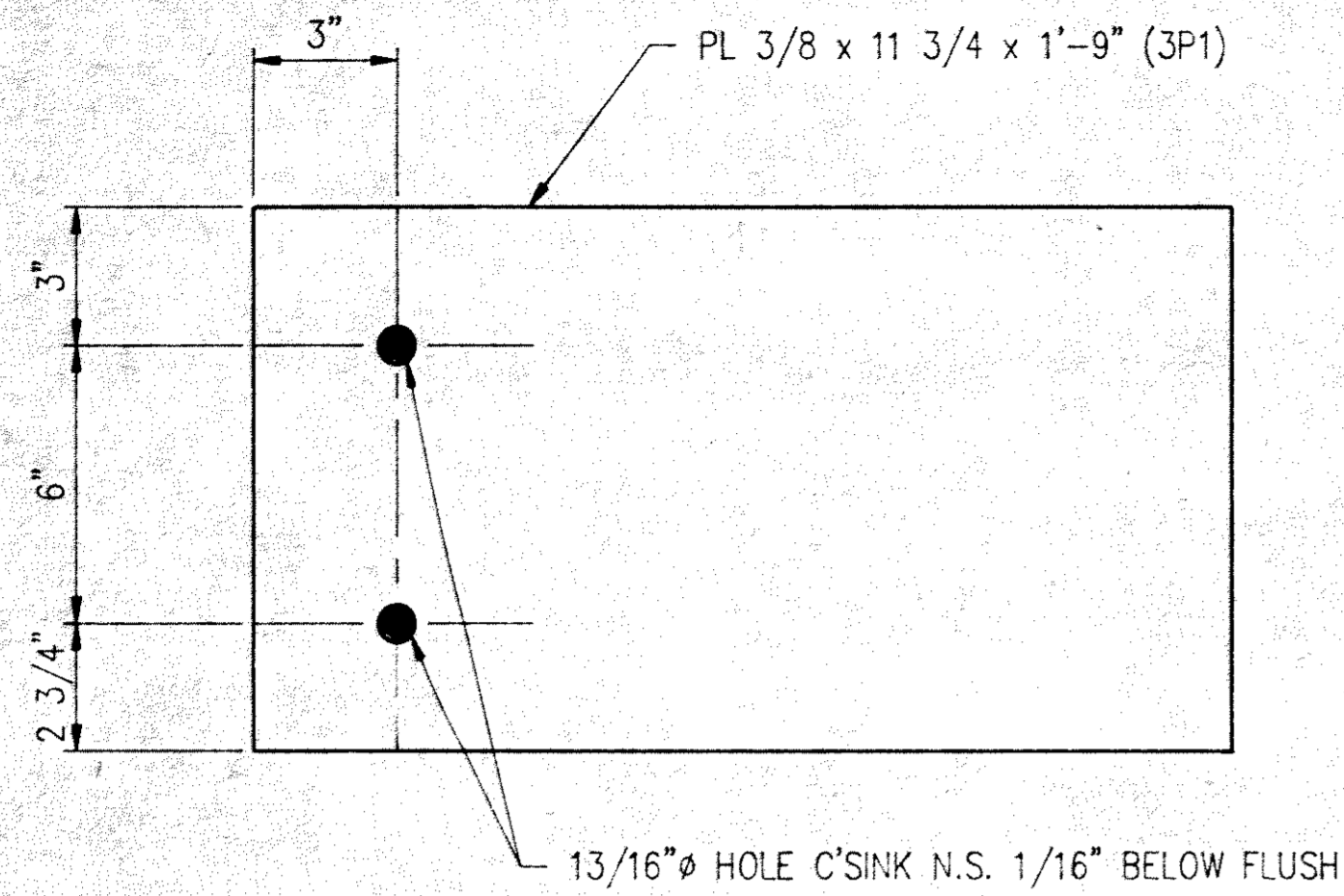
**PROJ. FILE**

**LEWIS ENGINEERING COMPANY**  
 4201 NOREX DRIVE - CHASKA, MINNESOTA 55318 - (612) 368-3000

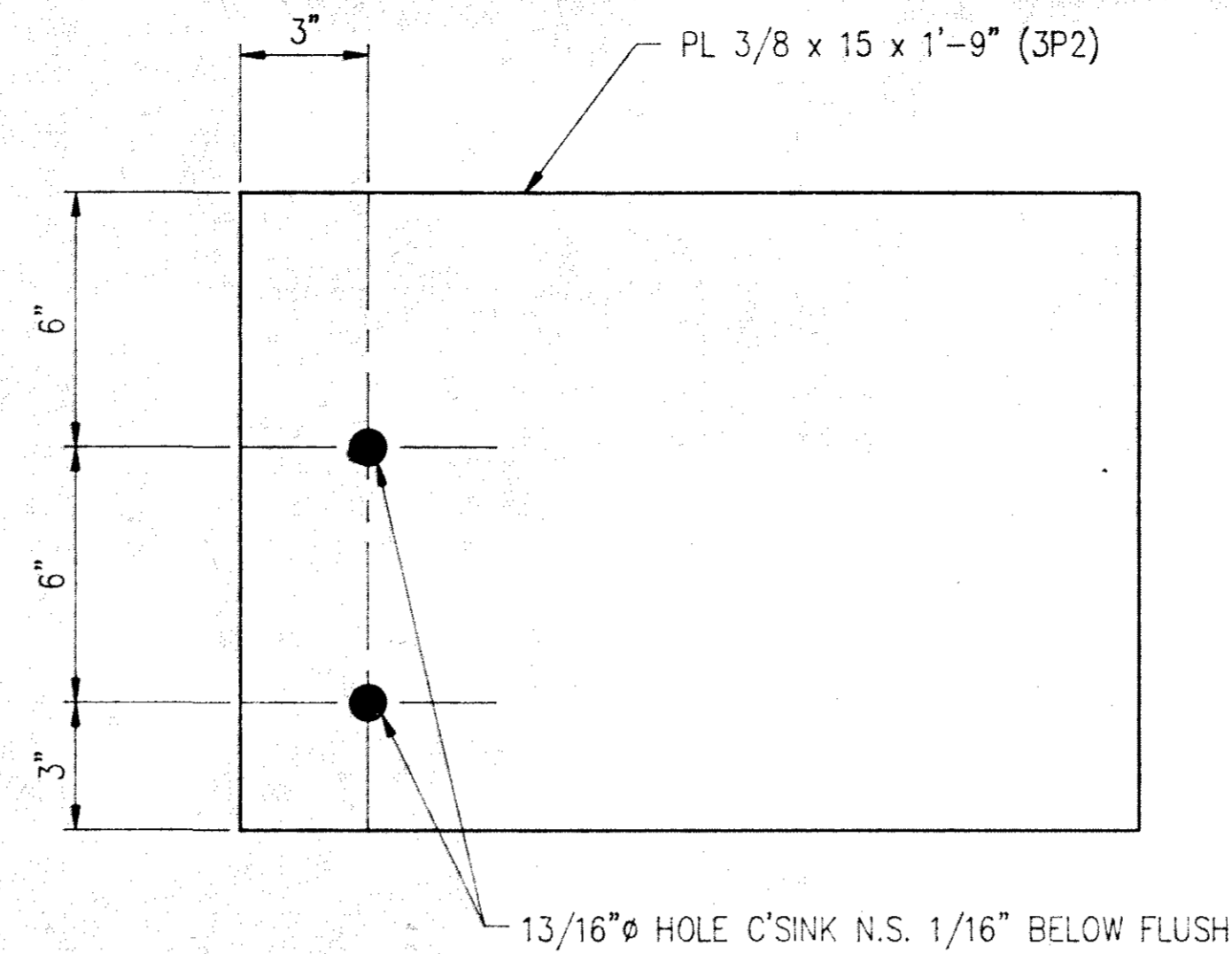
PROJECT - BRIDGE NO. 02523  
 STATE PROJECT - 02-602-09  
 FEDERAL PROJECT -  
 CUSTOMER - PROGRESSIVE CONTRACTORS INC.  
 LOCATION - ANOKA CO, MN  
 DESCRIPTION - SIDEWALK EXPANSION JOINTS

Drawn By RWM  
 Chk'd. By AF  
 Date: 4/22/91

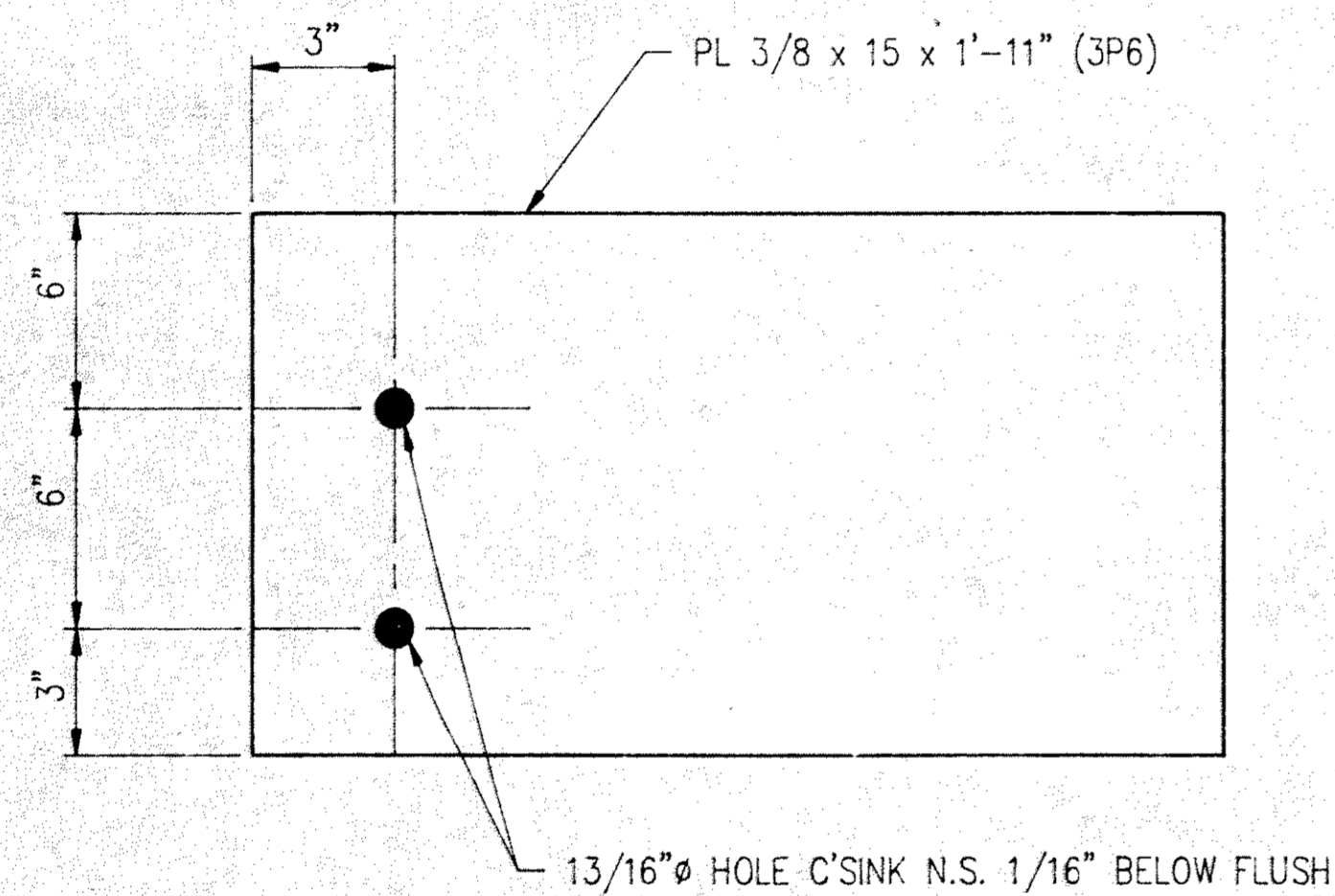




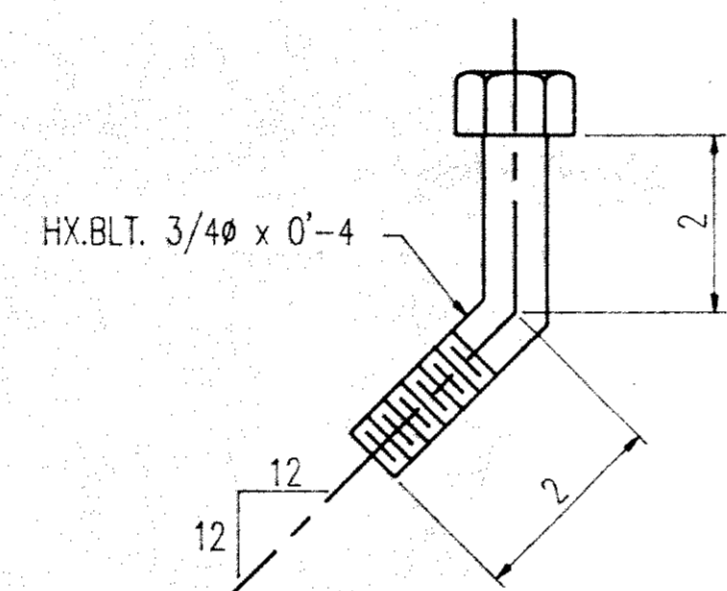
3 - BOTTOM PLATE - 3P1



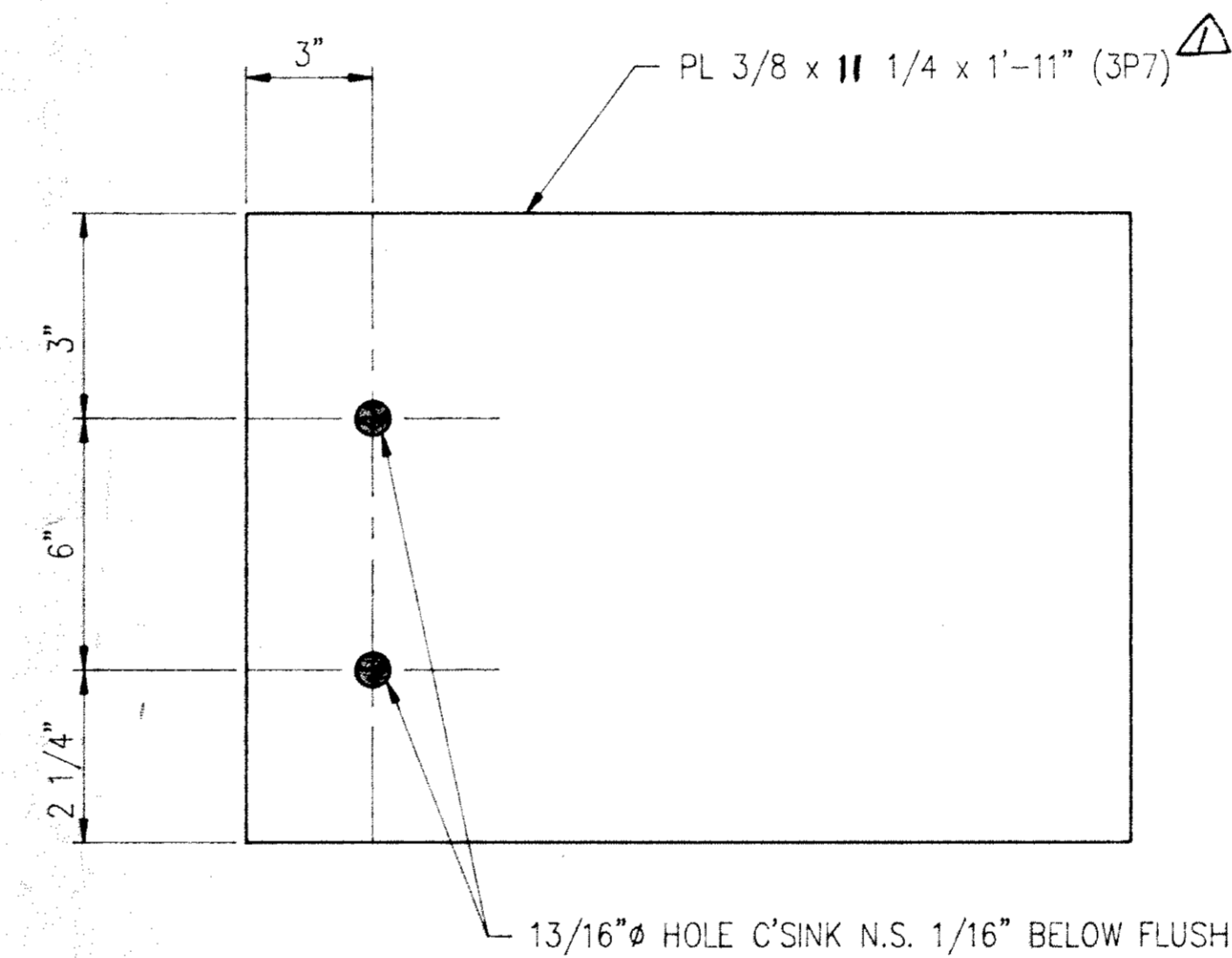
1 - TOP PLATE - 3P2



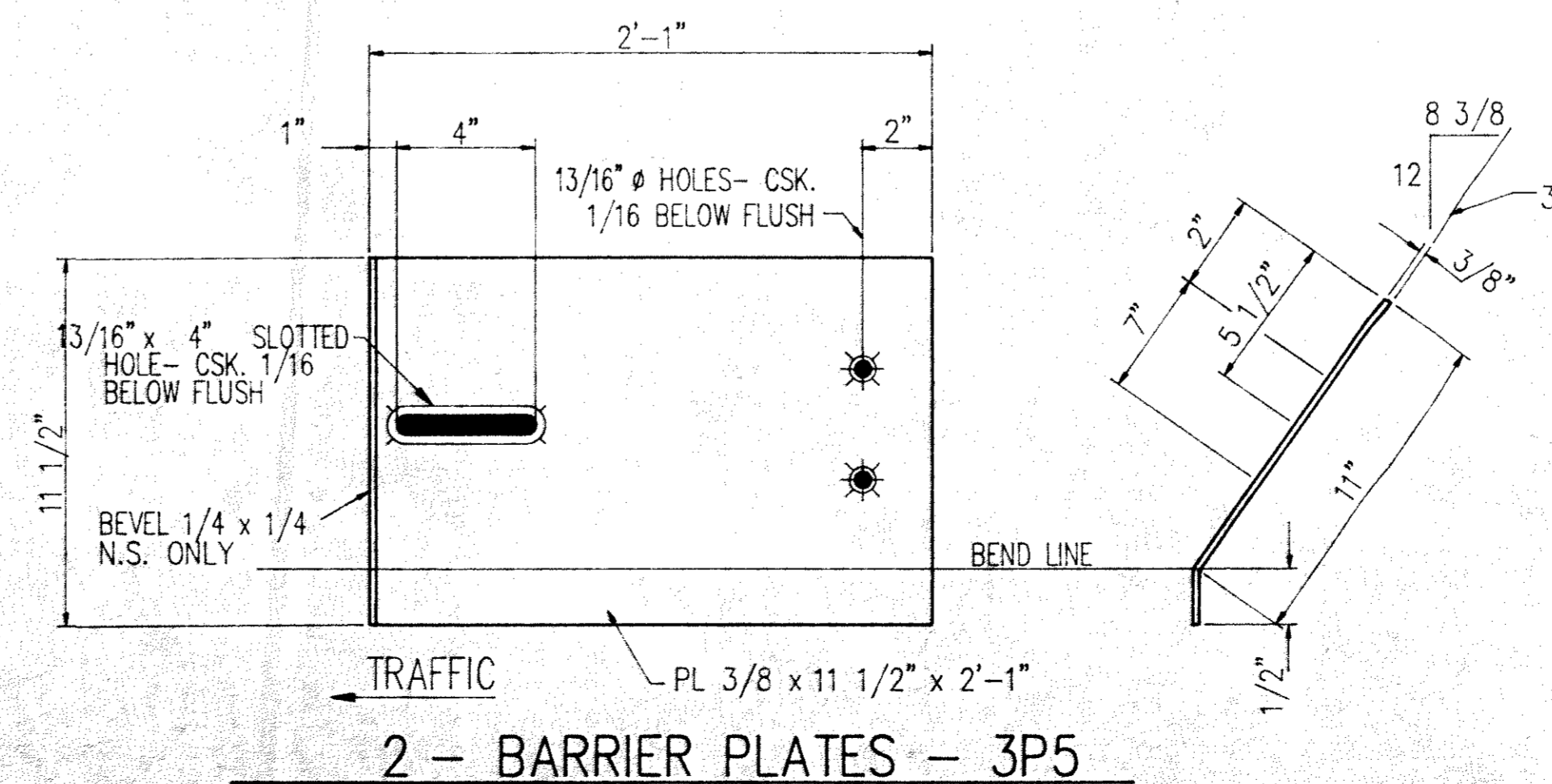
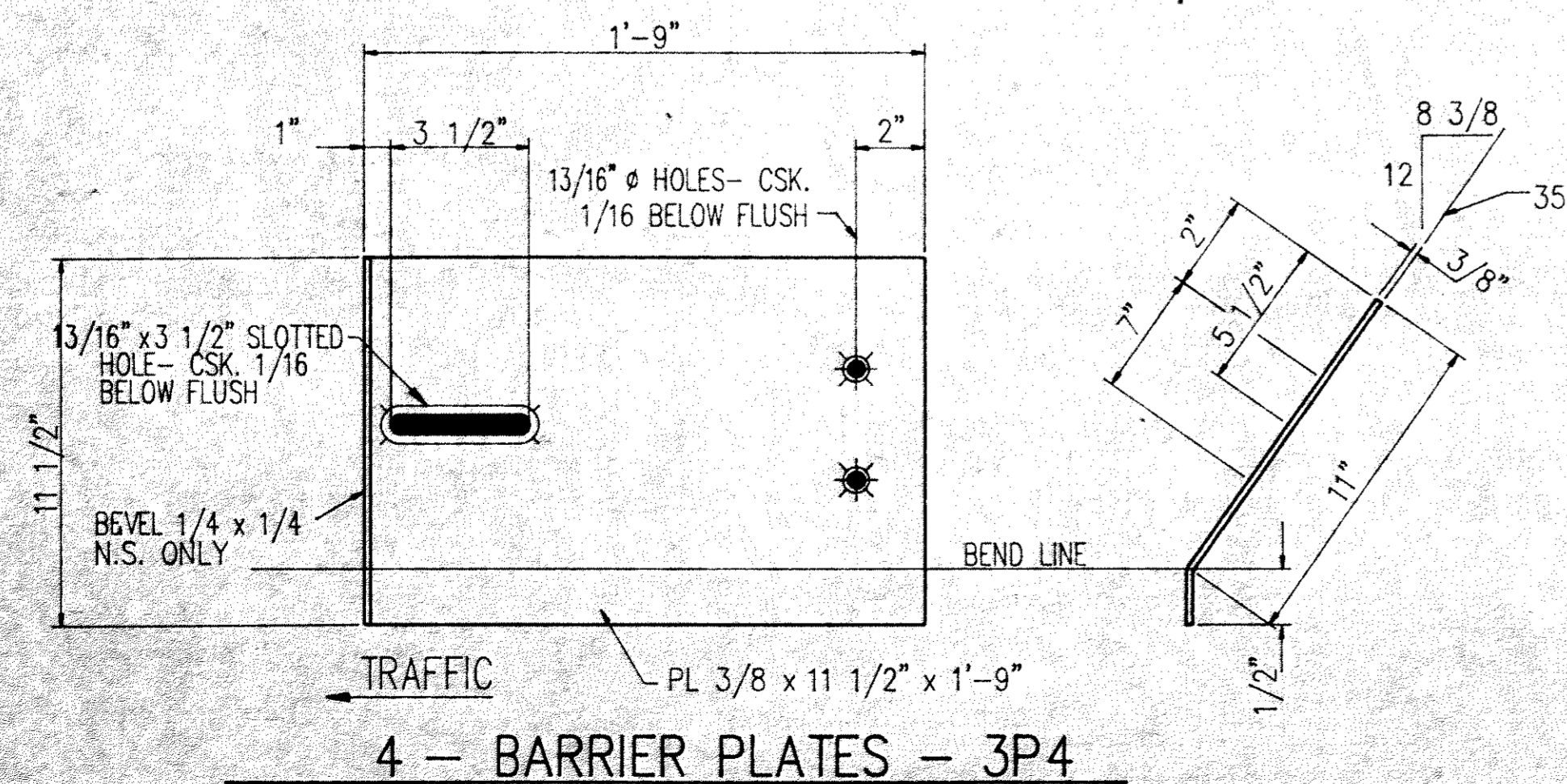
1 - TOP PLATE - 3P6



60 - BENT BOLTS - 3B3



1 - BOTTOM PLATE - 3P7



LINE NO.	REQ'D.	DESCRIPTION	LENGTH	MK	REMARKS	WGHT.
1		3 - BOTTOM PLATE - 3P1		G		
2	3	PL 3/8 x 11-3/4	1' 9"	3P1		
3						
4		1 - TOP PLATE - 3P2		G		
5	1	PL 3/8 x 15	1' 9"	3P2		
6						
7		1 - TOP PLATE - 3P6		G		
8	/	PL 3/8 x 15 $\Delta$	1' 11"	3P6		
9						
10		1 - BOTTOM PLATE - 3P7		G		
11	1	PL 3/8 x 11-1/4 $\Delta$	1' 11"	3P7		
12						
13		60 - BENT BOLTS - 3B3		G		
14	60	HB 3/4 x 0' 4"		3B3		
15						
16		4 - BARRIER PLATE - 3P4		G		
17	4	PL 3/8 x 11-1/2	1' 9"	3P4	ADD FOR BENDING	
18						
19		2 - BARRIER PLATE - 3P5		G		
20	2	PL 3/8 x 11-1/2	2' 1"	3P5	ADD FOR BENDING	
21						
22						
23						
24						
25						
26						
27						
28						
29						
30						
31						
32						
33						
34						
35						
36						
37						
38						
39		FIELD BOLTS:				
40	60	MB 3/4 x 1-1/2 SLTD CTSK G		3B6		
41	60	MN 3/4 x 2 CPLG NUT G		3N7		
42	60	FW 3/4 F844 G		3W8		
43						
44						
45						
46						
47						
48						
49						
50						
51						
52						
53						
54						
55						
56						
57						
58						
59						
60		$\Delta$ WAS 3 REOB. - Run #2391				
61		$\Delta$ WAS 10/4 - Run #2391				
62		FOR GENERAL NOTES SEE SH. 1				

STOP WORK  
State of Minnesota  
Department of Transportation  
NO OBJECTION TAKEN  
MAY 10 1961  
REVIEW IS FOR GENERAL COMPLIANCE  
WITH PLANS AND SPECIFICATIONS  
JOHN R. ALLEN  
STRUCTURAL METALS ENGINEER

**PROJ. FILE**

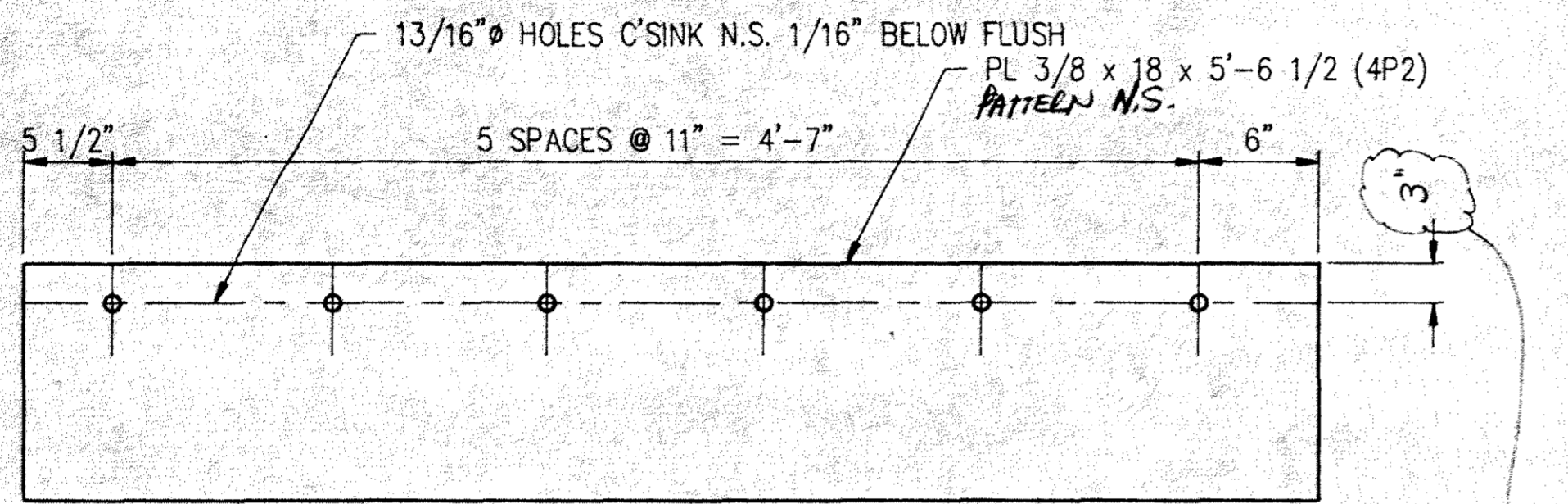
**LEWIS ENGINEERING COMPANY**  
4201 NOREX DRIVE - CHASKA, MINNESOTA 55318 - (612) 368-3000

PROJECT - BRIDGE NO. 02523  
STATE PROJECT - 02-602-09  
FEDERAL PROJECT -  
CUSTOMER - PROGRESSIVE CONTRACTORS INC.  
LOCATION - ANOKA CO, MN  
DESCRIPTION - BARRIER PLATES

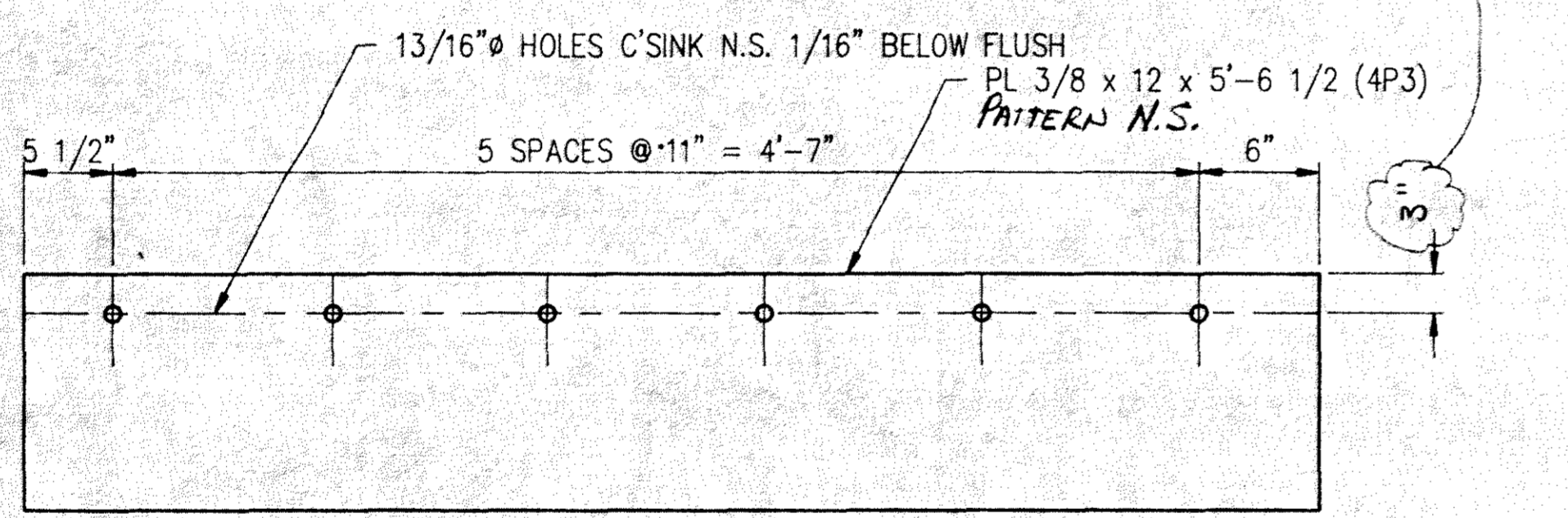
Drawn By RWM  
Chk'd. By RFP  
Date: 1/22/61

SHEET NO. 3 OF 4 Job. No. : 8612-64





ONE - SIDEWALK PLATE - 4P2




3 - SIDEWALK PLATE - 4P3

LLI NO. REQD.	DESCRIPTION	LENGTH	MK	REMARKS	WGHT.	
1						
2						
3						
4	ONE - SIDEWALK PLATE - 4P2			G		
5	1 CP 3/8 x 18 A786	5' 6-1/2"	4P2			
6						
7	3 - SIDEWALK PLATE - 4P3			G		
8	3 CP 3/8 x 12 A786	5' 6-1/2"	4P3			
9						
10						
11						
12						
13						
14						
15						
16						
17						
18						
19						
20						
21						
22						
23						
24						
25						
26						
27						
28						
29						
30						
31						
32						
33						
34						
35						
36						
37						
38						
39						
40						
41						
42						
43						
44						
45						
46						
47						
48						
49						
50						
51						
52						
53						
54						
55						
56						
57						
58						
59						
60						
61						
62	FOR GENERAL NOTES SEE SHEET 1					

State of Minnesota  
 Department of Transportation  
 NO OBJECTION TAKEN  
 MAY 10 1991  
 REVIEW IS FOR GENERAL COMPLIANCE  
 WITH PLANS AND SPECIFICATIONS  
 JOHN R. ALLEN  
 STRUCTURAL METALS ENGINEER

**PROJ. FILE**


**LEWIS ENGINEERING COMPANY**  
 4201 NOREX DRIVE - CHASKA, MINNESOTA 55318 - (612) 368-3000  
 PROJECT - BRIDGE NO. 02523  
 STATE PROJECT - 02-602-09  
 FEDERAL PROJECT -  
 CUSTOMER - PROGRESSIVE CONTRACTORS INC.  
 LOCATION - ANOKA CO, MN  
 DESCRIPTION - SIDEWALK PLATES

Drawn By RWM  
 Chk'd. By RFE  
 Date: 4/27/91