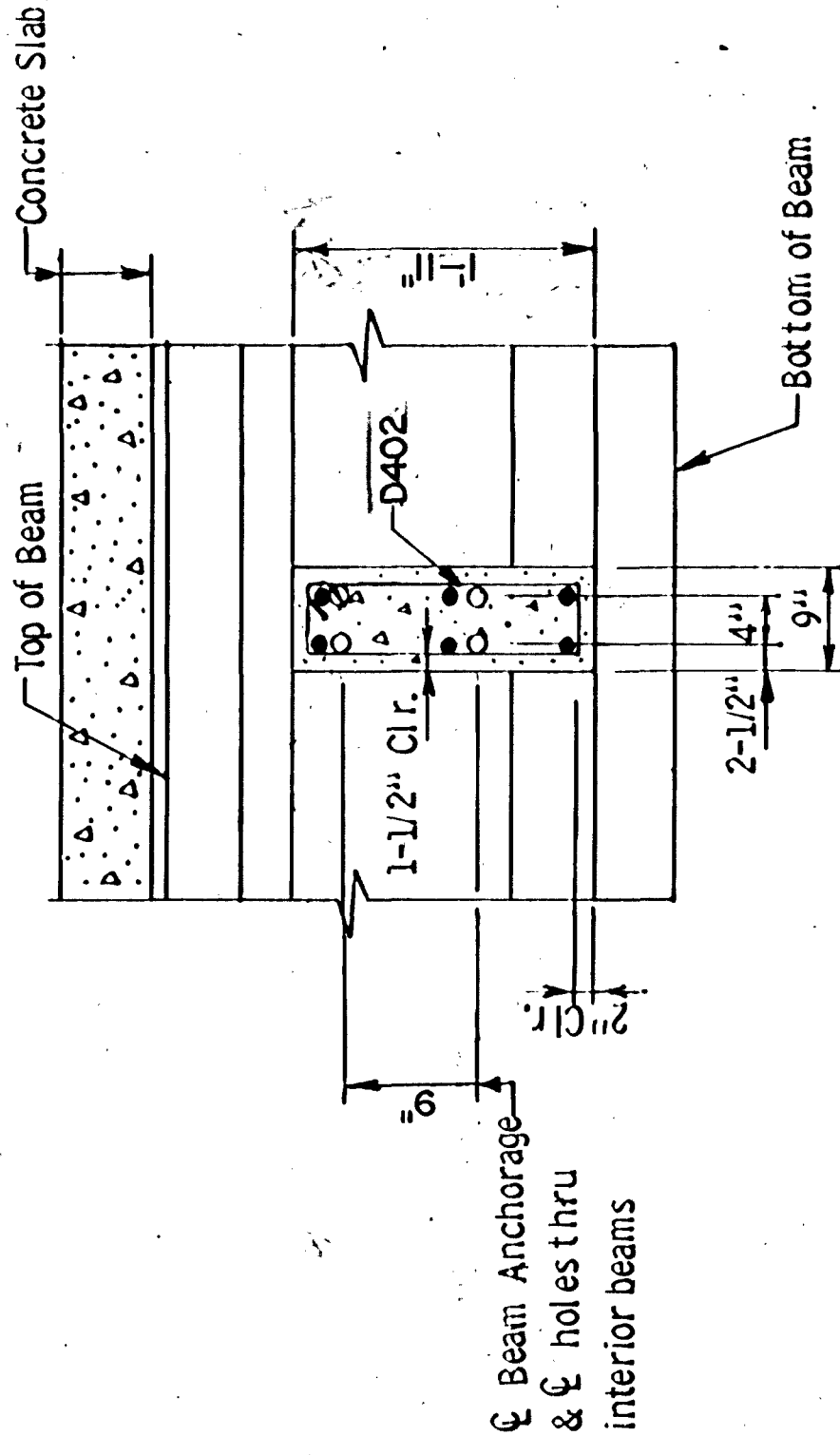


PART TRANSVERSE SECTION

Beam Height	Dim. "A" for comp. volume	Diaph. Dim. "B"	Bar D403 Length
36"	7-1/2"	1'-4"	3'-9"
36"	7-3/4"	1'-9"	4'-7"
40"	8-3/4"	1'-11"	4'-11"
45"	9"	2'-2 1/2"	5'-6"
54"	10-1/2"	2'-6"	6'-5"

Concrete volume per diaphragm  
 $(L-A) \times B \times 75 = (\text{Cu. yd.})$

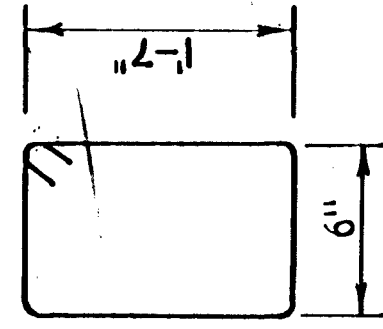
27



SECTION A-A

GENERAL NOTES

- For Diaphragms 20" and over, use threaded rods as shown on standard prestressed concrete beam sheet.
- All diaphragm concrete and reinforcement bars shown on this detail to be included in payment for diaphragms for prestressed beams. Threaded rods are included in payment for prestressed concrete beams.
- Payment length for diaphragms.
- SEE ALT. STEEL DIAPHRAGM DETAIL, SHT. 12



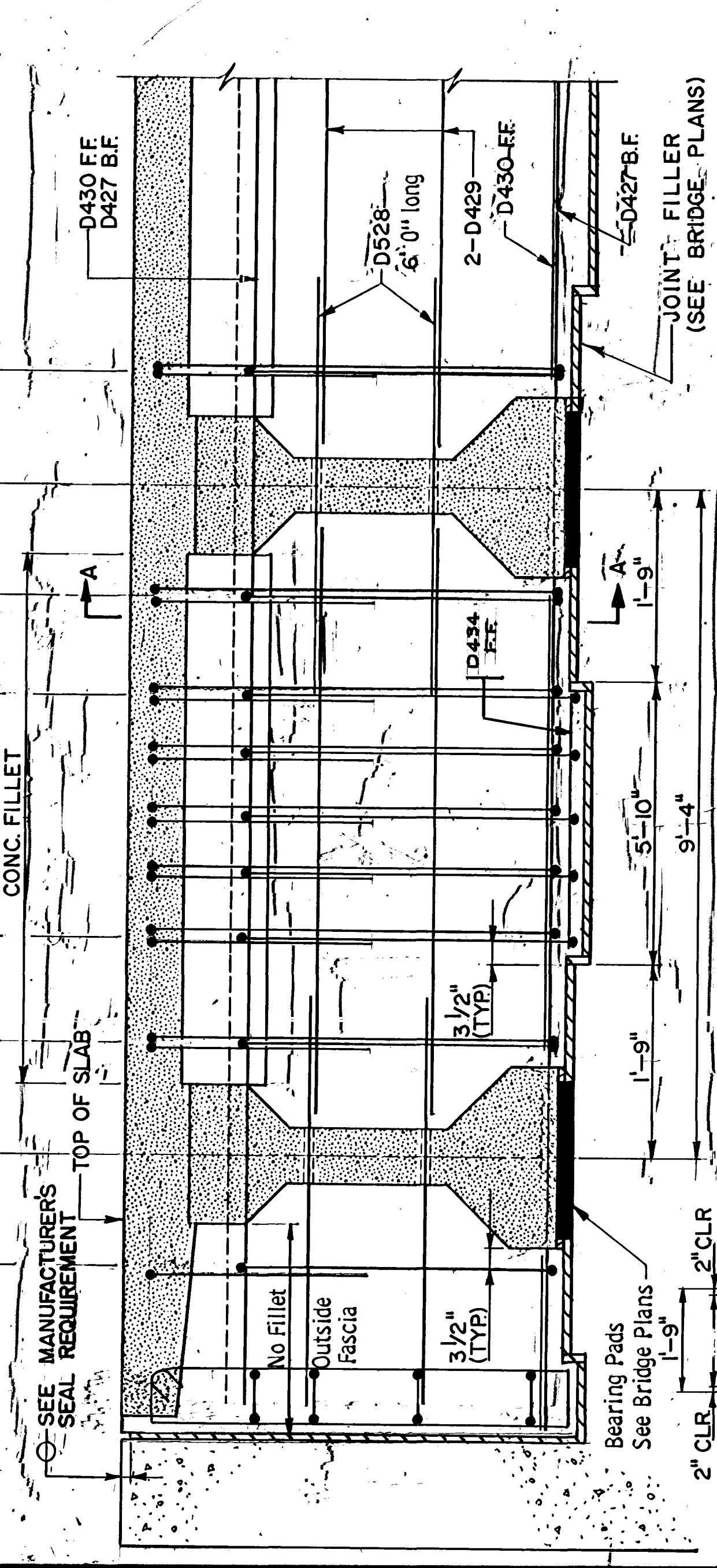
D402

APPROVED: March 27, 1979  
 DEVELOPED BY: OFFICE OF ENGINEERING STANDARDS AND BRIDGE DESIGN  
 ISSUED BY: OFFICE OF ENGINEERING STANDARDS

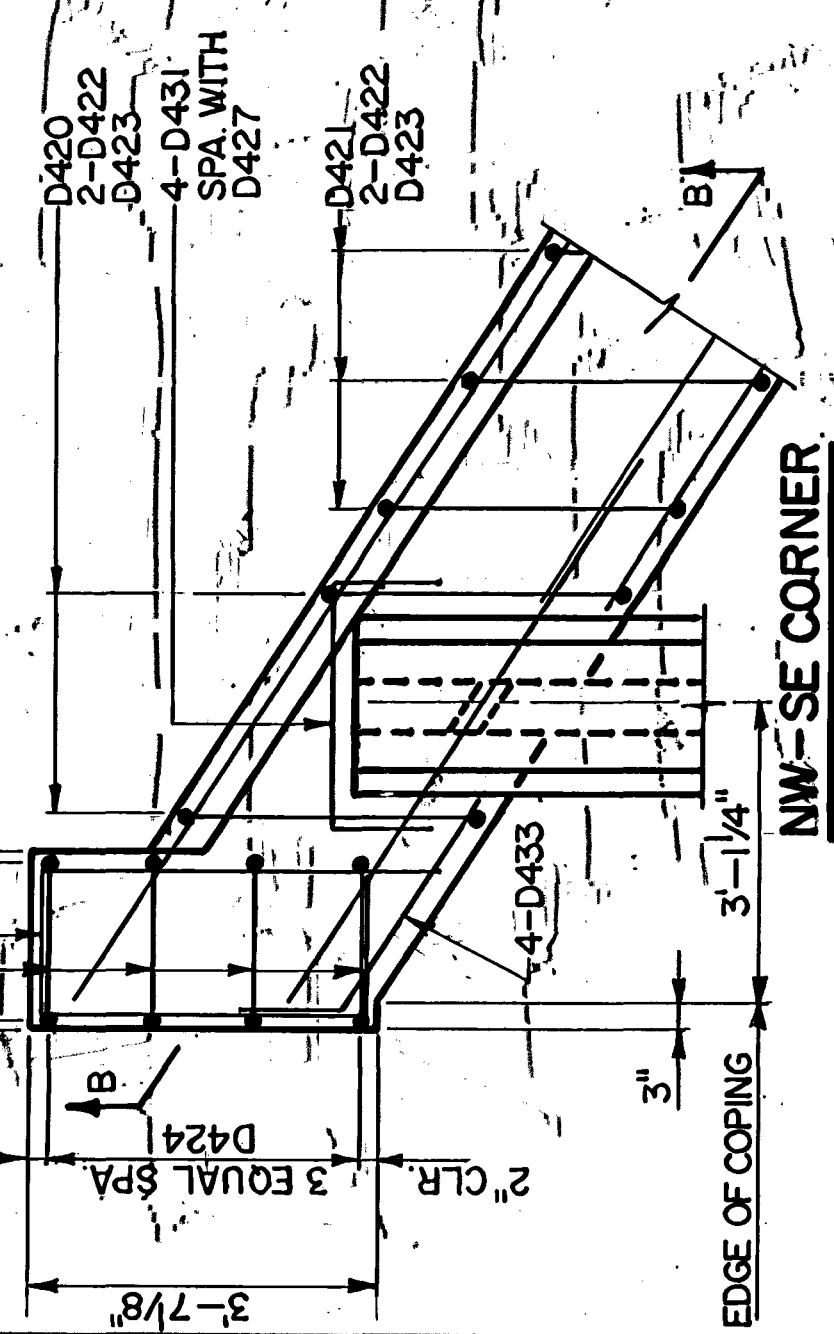
STATE OF MINNESOTA  
 DEPARTMENT OF TRANSPORTATION  
**CONCRETE INTERMEDIATE DIAPHRAGM ALT.**  
 (FOR 28" - 54" PRESTRESSED CONCRETE BEAM SPANS)

REVISION  
 DETAIL NO. **B802**

NOTE: NEOPRENE COMPRESSION SEAL IS NOT SHOWN SEE SHT. 2 FOR DETAILS.



PART TRANSVERSE SECTION B-B AT END DIAPHRAGM



SECTION A-A

NOTE: DIAPH. CONC. AND REINFORCEMENT QUANTITIES ARE INCLUDED IN SUPERSTRUCTURE QUANTITIES.

NE-SW CORNER

NW-SE CORNER

APPROVED: Oct. 20, 1976  
 DEVELOPED BY: OFFICE OF ENGINEERING STANDARDS AND BRIDGE DESIGN  
 ISSUED BY: OFFICE OF ENGINEERING STANDARDS

STATE OF MINNESOTA  
 DEPARTMENT OF TRANSPORTATION  
**CONCRETE END DIAPHRAGM**  
 (28" - 54" PRESTRESSED CONCRETE BEAM SPAN WITH PILE BENT ABUTMENT)

REVISION  
 DETAIL NO. **B810**

S.A.P. NO. 02-678-03

TITLE

DETAILS

DES. J.D.S. DE. D.A.O. APPROVED: July 25, 1980

CHIEF D.H.B. CHIEF J.D.S. 12-2-71

Sheet No. 11 of 16 Sheets

Bridge No. 02539