

1" DIA. x 1" LONG SLOTTED HOLE FOR 3/4" x 1 1/2" FLAT HEAD CAP SCREW WITH 2" LONG HEX NUT AND 3/4" DIA. x 4" BENT BOLT DO NOT TIGHTEN DOWN CAP SCREW

3/4" DIA. x 1" FLAT HEAD CAP SCREW

3/4" x 1-1/2" x 2'-0" PL. TO BE RECESSED 1/4" BELOW FACE OF BARRIER AND CENTERED ABOUT JOINT.

2" LONG HEX NUT AND 3/4" DIA. x 4" BENT BOLT

TOP OF DECK

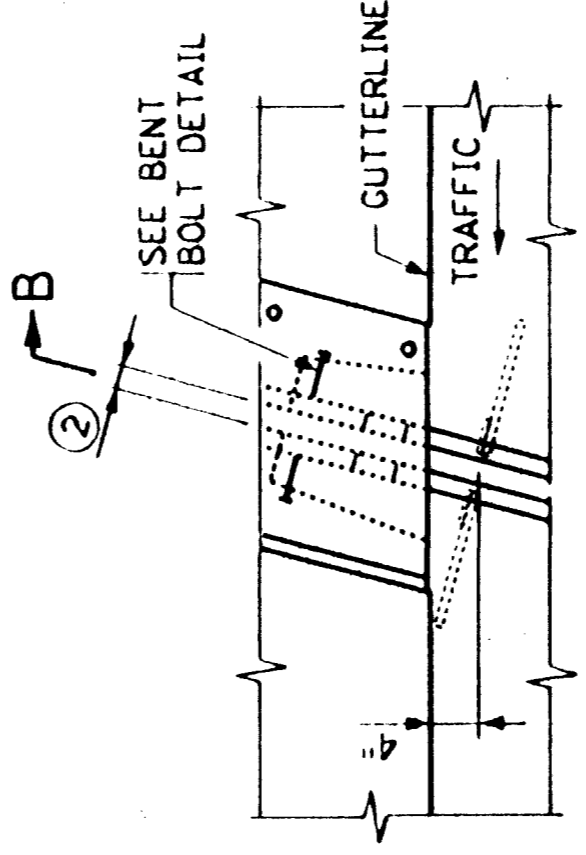
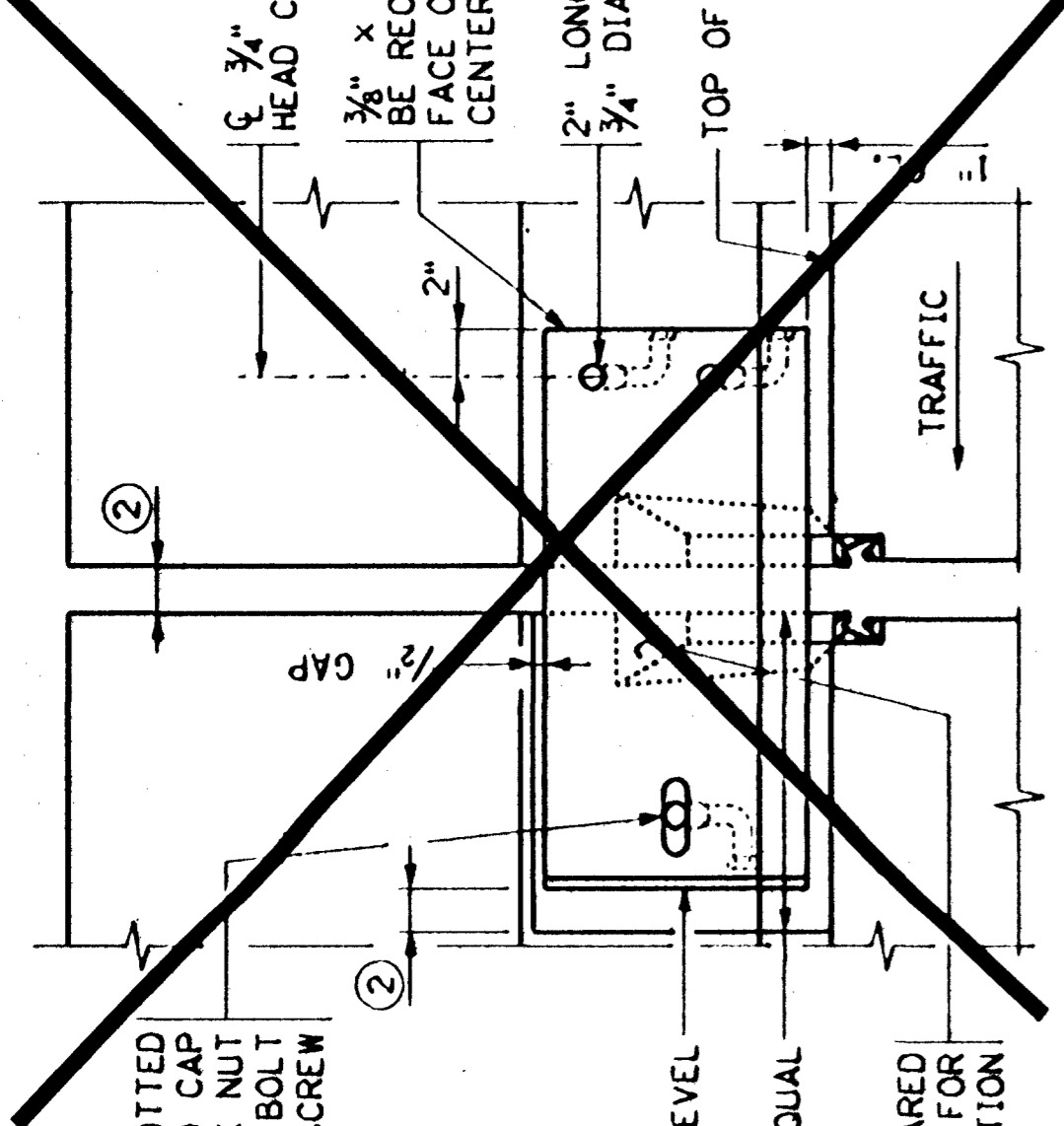
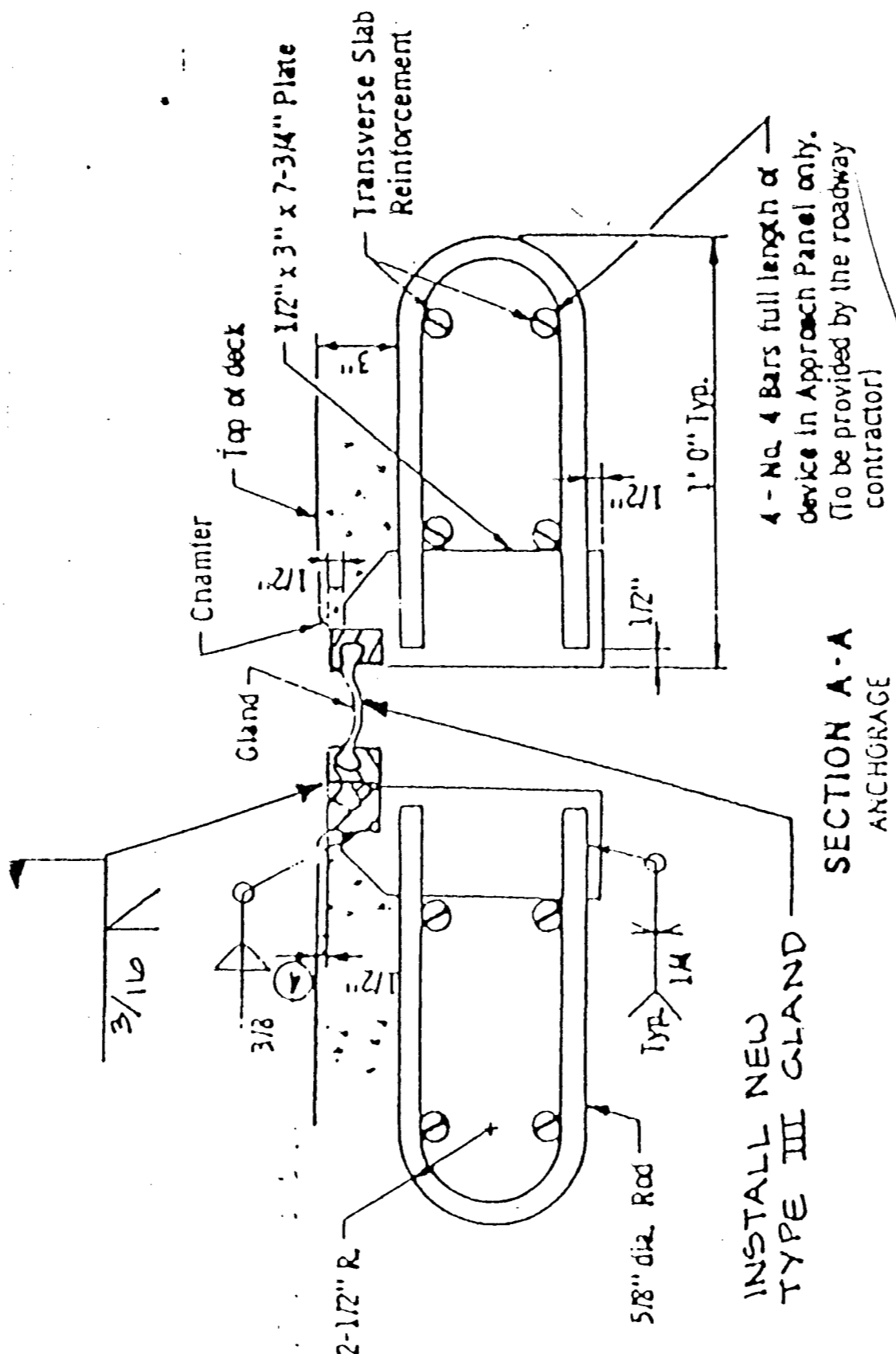
1/4" BEVEL

1/2" BIT. FELT OR EQUAL

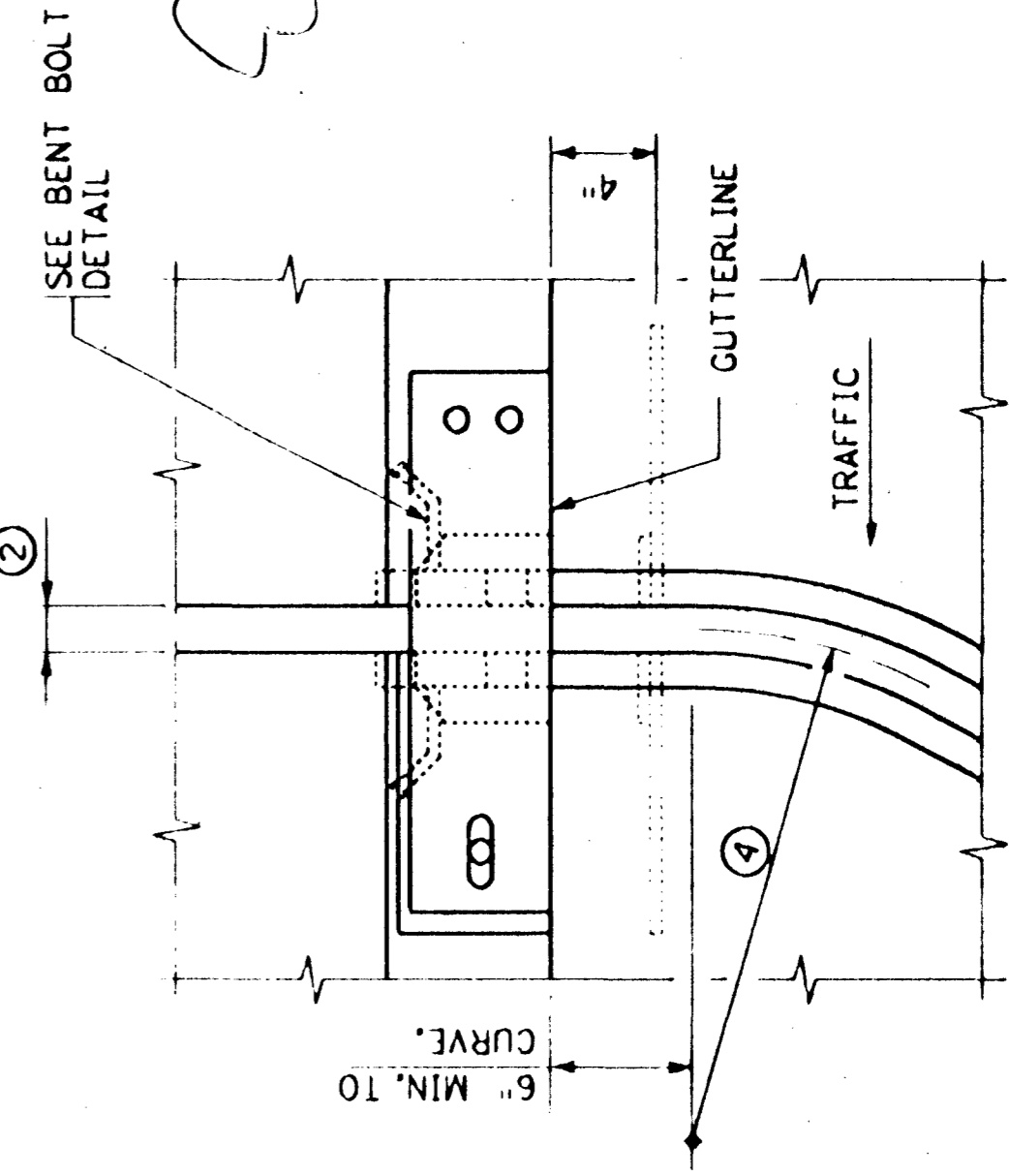
BLOCK OUT FLARED AREA AS SHOWN FOR GLAND INSTALLATION

TRAFFIC

RAILING ELEVATION

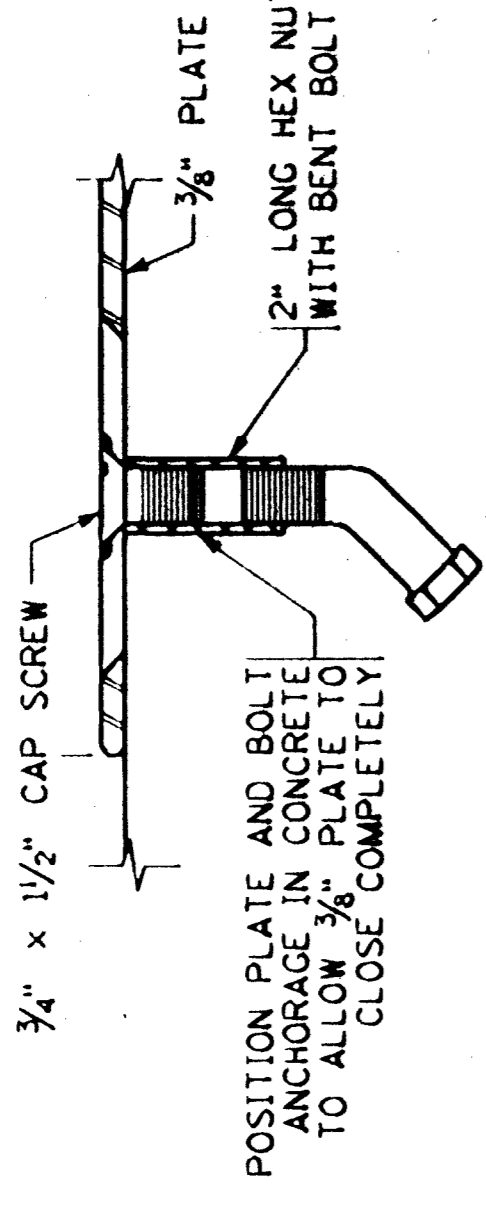
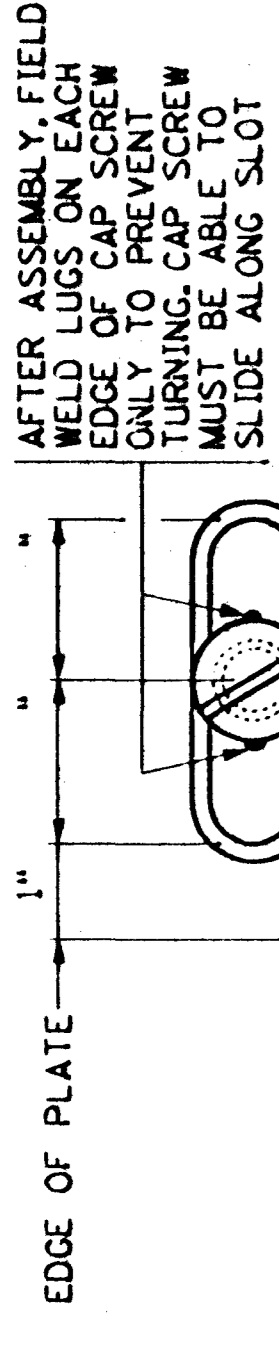


PLAN VIEW @ EXP. DEVICE (WITH STRAIGHT DEVICE)



PLAN VIEW @ EXP. DEVICE (WITH STRAIGHT DEVICE)

PLAN VIEW @ EXP. DEVICE (WITH CURVED DEVICE ALTERNATE)



NOTES

1 GALVANIZE STRUCTURAL STEEL AFTER FABRICATION AS PER SPEC. 3394.

2 JOINTS IN ROADWAY PLATE OR EXTRUSION SHALL BE LOCATED AT BREAKS IN TRANSVERSE PROFILE AND AS OTHERWISE REQUIRED. JOINTS SHALL BE CLOSE FIT AND WELDED. REPAIR AFTER WELDING AS PER SPEC. 2471.3L.

3 STRUCTURAL STEEL SHALL COMPLY WITH SPEC. 3306, SPEC. 3307, OR SPEC. 3309.

4 EXPANSION DEVICE SHALL BE STRAIGHTENED TO A TOLERANCE OF 1/8" IN 10 FEET.

5 CAP SCREWS SHALL BE COUNTERSUNK 1/16" BELOW TOP OF PLATE.

6 LENGTH OF PAYMENT FOR DEVICE IS FROM GUTTERLINE TO GUTTERLINE.

7 DIMENSIONS ARE ALONG CENTERLINE OF JOINT.

8 -- AT 45° -- AT 90°

9 1/8" (1/4" MAX.)

10 1/2" (3/4" MAX.) WHEN SNOWPLOW FINGERS ARE USED.

11 SEE SUPERSTRUCTURE DETAILS FOR RADII.

SECTION B-B ALONG C JOINT

ELEVATIONS SHOWN ARE 1/8" BELOW TOP OF SLAB @ C JT.
ELEVATIONS SHOWN ARE 1/2" BELOW TOP OF SLAB @ C JT.