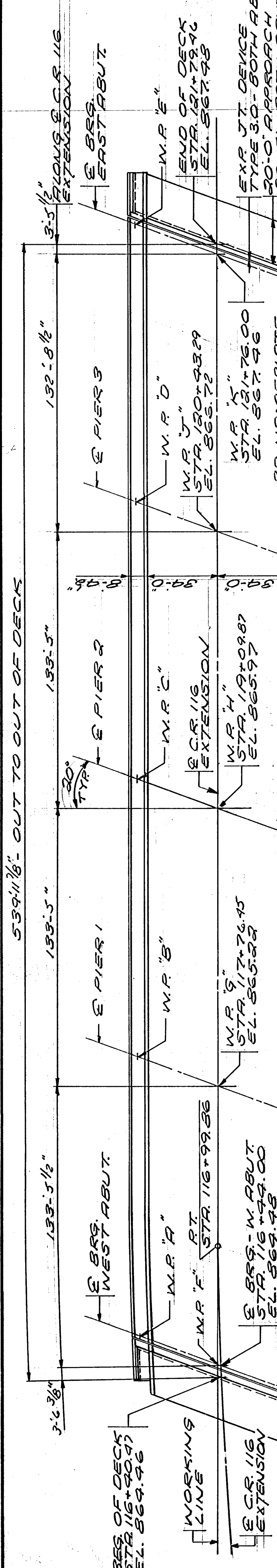


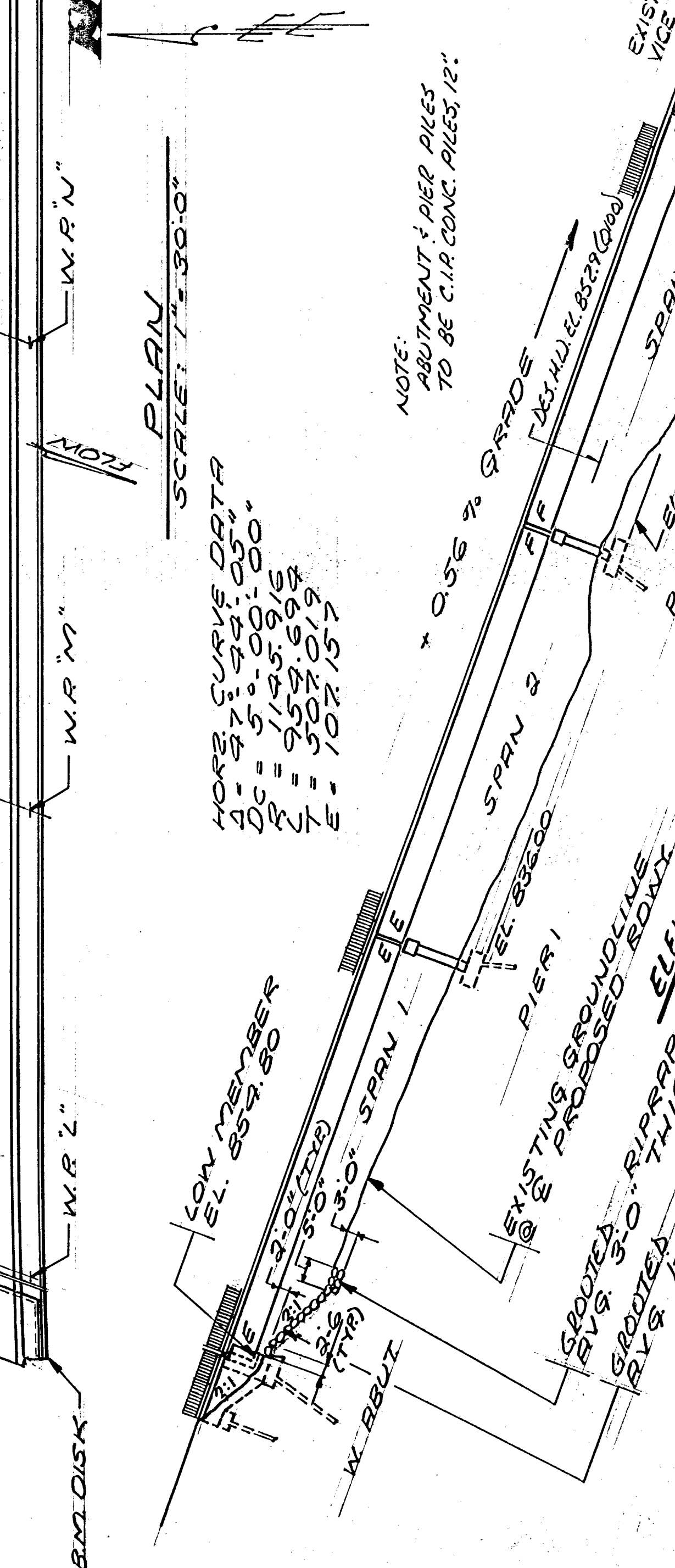
DESIGN DATA
 1988 R.A.S. H.T.O. DESIGN SPECIFIC CONDITIONS LOAD FACTOR DESIGN WINDS
 ALL LOADINGS INCLUDES 17 P.S.F. ALLOWANCE COURSE MODIFICATIONS WEARING COURSE CONCRETE ADDITIONAL REINFORCED CONCRETE.
 P.Y. = 5000 P.S.I. REINFORCEMENT STRUCTURAL STEEL.
 P.Y. = 5000 P.S.I. SPEC. 3306 PRESTRESSED CONCRETE.
 P.Y. = 5000 P.S.I. 2" X 6" 20' X STRANDS DECK AREA = 45' X 50' FT. PROTECTED A.B.T. FOR 2009 = 19,150
 B.M. EL. 823.23
 J.E. CORNER JAWLARK AT J.E. CORNER OF ICE ARENA.



LIST OF SHEETS

NO.	DESCRIPTION
1	GENERAL PLAN & ELEVATION
2	BRIDGE LAYOUT
3-6	WEST ABUTMENT DETAILS
7-9	WEST ABUTMENT REINFORCEMENT
10-11	WALL REINFORCEMENT
12-15	EAST ABUTMENT DETAILS
16-18	EAST ABUTMENT REINFORCEMENT
19	ABUTMENT QUANTITIES
20-22	PIER DETAILS
23-26	SUBSTRUCTURE DETAILS
27	FRAMING PLAN
28	8" PRESTR. CONCRETE BEAM DETAILS
29-30	UTILITY DETAILS
31	CONDUIT SYSTEM FOR LIGHTING
32	BIKEWAY RAILING CONCRETE (TYPE 4) FENCE
33	ORNAMENTAL METAL RAILING (TYPE 3)
34	BRIDGE APPROACH PANEL
35	EXPANSION DEVICE TYPE 30
36-41	DETAILS
42	BRIDGE SURVEY
43	BRIDGE SURVEY - PLAN & PROFILE
43-46	BRIDGE SURVEY

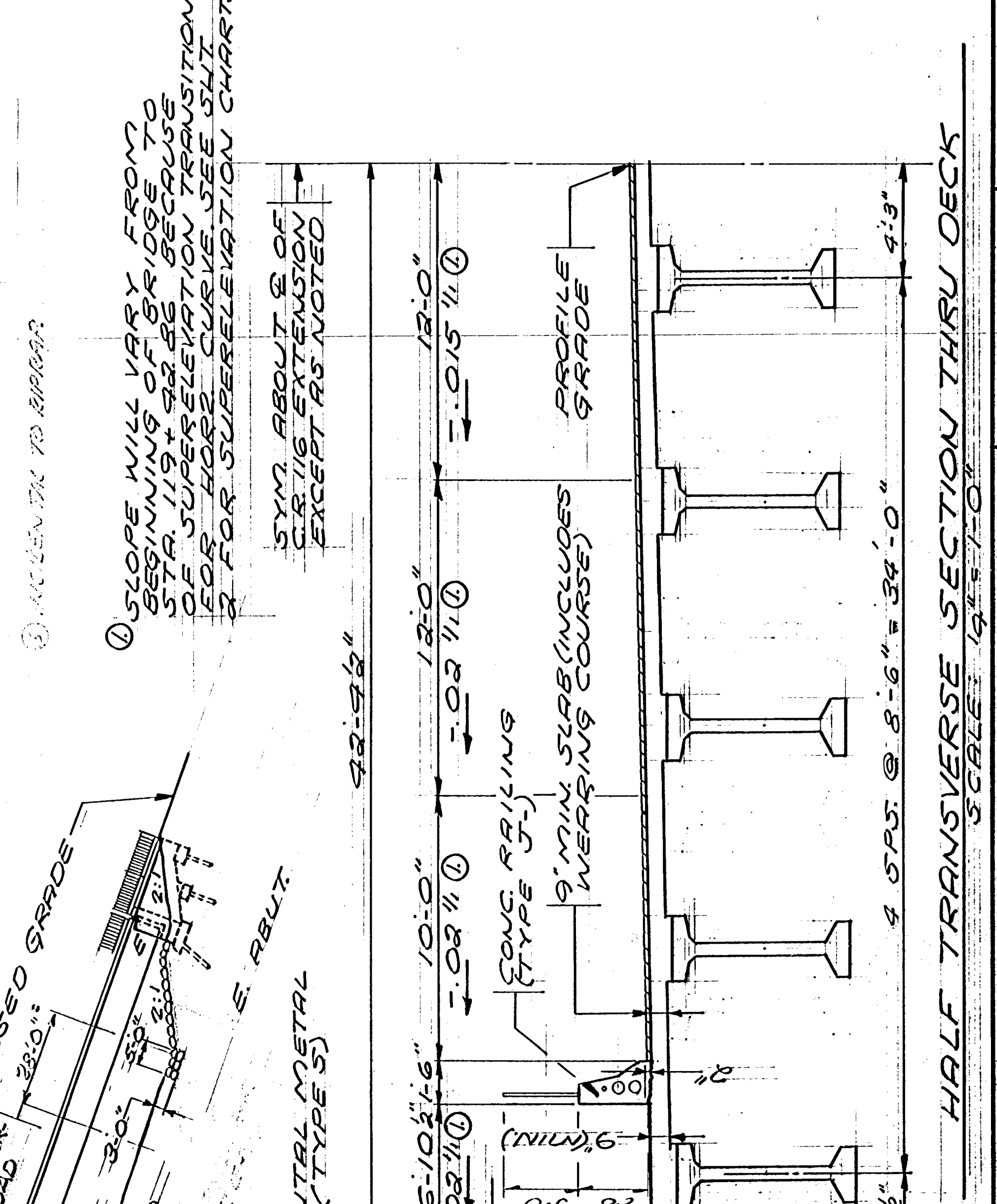
CONSTRUCTION NOTES
 THE 1988 EDITION OF THE MINNESOTA DEPARTMENT OF TRANSPORTATION "STANDARD SPECIFICATIONS FOR CONSTRUCTION" SHALL GOVERN.
 BRIDGE SEAT REINFORCEMENT SHALL BE PLACED TO AVOID INTERFERENCE WITH DRILLING HOLES FOR ANCHOR BODIES. THE SUPERSTRUCTURE BEAMS SHALL BE PLACED IN FINAL POSITION PRIOR TO DRILLING HOLES FOR AND PLACING ANCHOR BODIES.
 THE FIRST DIGIT FOR THE FIRST TWO DIGITS OF EACH BAR MARK INDICATES THE BAR SIZE.
 BARS MARKED WITH THE SUFFIX "E" SHALL BE EPOXY COATED IN ACCORDANCE WITH THE SPECIAL PROVISIONS.
 NOTE: ABUTMENT PIER PILES TO BE C.I.P. CONC. PILES 12" DIA. HOLE BORE PILES.



APPROVED:
 [Signature]
 COUNTY ENGINEER
 ANOKA COUNTY
 DATE: 9/29/89

HEREBY CERTIFY THAT THIS PLAN WAS PREPARED BY ME OR UNDER MY DIRECT SUPERVISION & THAT I AM A DULY REGISTERED PROFESSIONAL ENGINEER UNDER THE LAWS OF THE STATE OF MINNESOTA.
 Robert C. Tomczyk
 REG. NO. 69894

DATE:
 C.R. 116 EXTENSION
 MINNESOTA DEPARTMENT OF TRANSPORTATION
 BRIDGE NO. 08549
 C.R. 116 EXTENSION FROM C.S. 87 IN RAMSEY TO C.S. 87 IN ANOKA OVER THE RUM RIVER
 9'-13" PRESTRESSED BEAM SPANS 28'-0" ROW, 2'-10'-0" SIDEWALKS, 30" STEW
 SPAN IDENT. NO. 501
 GENERAL PLAN AND ELEVATION
 SEC. 35 TWP. 33N. R. 35W. RAMSEY TOWNSHIP ANOKA COUNTY



SCHEDULE OF QUANTITIES FOR ENTIRE BRIDGE

ITEM NO.	DESCRIPTION	UNIT	QUANTITY
2345.509	CONDUIT SYSTEM (LIGHTING)	LINEAR FOOT	1
2345.509	CONDUIT SYSTEM (TELEPHONE)	LINEAR FOOT	1
2345.509	CONDUIT SYSTEM (POWER)	LINEAR FOOT	1
2345.509	CONDUIT SYSTEM (WATERMAIN)	LINEAR FOOT	1
2345.509	CONDUIT SYSTEM (GAS MAIN)	LINEAR FOOT	1
2401.501	STRUCTURE CONCRETE (IAB)	CU. YD.	674 (A)
2401.501	STRUCTURE CONCRETE (IAB)	CU. YD.	253 (B)
2401.502	BRIDGE SEAT CONCRETE (IAB)	SQ. FT.	45,678 (A)
2401.503	TRE & RAILING CONCRETE (IAB)	LINEAR FOOT	1160 (A)
2401.504	SIDEWALK CONCRETE (IAB)	SQ. FT.	372 (A)
2401.505	CONCRETE OVERLAY (FOOT)	SQ. FT.	36,650 (A)
2401.501	REINFORCEMENT BARS EPOXY COATED	POUNDS	376,230 (A)
2401.501	REINFORCEMENT BARS	POUNDS	27,800 (A)
2402.505	BEARING ASSEMBLY	EACH	80
2405.502	PRESTRESSED CONCRETE BEAMS B1	LINEAR FOOT	5326 (A)
2401.601	GRADE PREPARATION	LINEAR FOOT	1
2401.601	STRUCTURE EXCAVATION	LINEAR FOOT	1
2402.503	ORNAMENTAL METAL RAILING	LINEAR FOOT	1150
2452.501	WIRE FENCE, DESIGN 5'1"	LINEAR FOOT	1160
2452.502	C.I.P. CONCRETE PILING, DELIVERED 12"	LINEAR FOOT	16470
2452.508	C.I.P. CONCRETE PILING, DRIVEN 12"	LINEAR FOOT	16470
2452.519	C.I.P. CONCRETE TEST PILES 65 FT. LG. 12"	EACH	4
2452.519	C.I.P. CONCRETE TEST PILES 80 FT. LG. 12"	EACH	2
2401.507	GRAVEL RIPRAP	CU. YD.	370
2402.501	EXPANSION JOINT DEVICES, TYPE 3	LINEAR FOOT	182 (A)
2401.601	BRIDGE APPROACH PAVERS	LINEAR FOOT	1
2405.511	WARRANTS FOR TYPE B1 PRESTRESSED BEAMS	LINEAR FOOT	1647 (A)
2405.508	FOUNDATION FOR UTILITY	LINEAR FOOT	1
2401.601	FOUNDATION PREPARATION (PIER 1)	LINEAR FOOT	1
2401.601	FOUNDATION PREPARATION (PIER 2)	LINEAR FOOT	1
2401.601	FOUNDATION PREPARATION (PIER 3)	LINEAR FOOT	1