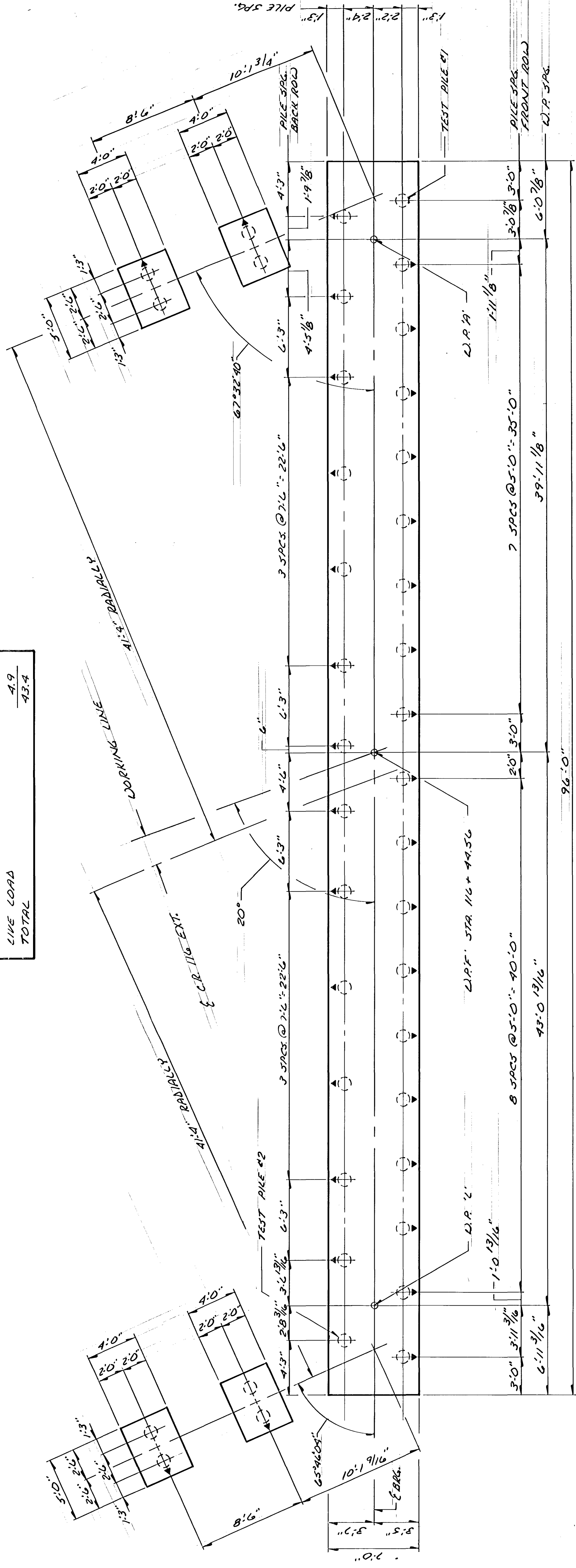


PILE NOTES

- 2. CAST IN PLACE CONC. TEST PILES 65' LG.
- 3. CAST IN PLACE CONC. PILES - EST. LENGTH 55' LG.
- 8. CAST IN PLACE CONC. WINGWALL PILES - EST. LENGTH 55' LG.
- 41. CAST IN PLACE CONC. PILES REQ'D FOR WEST ABUTMENT

ALL PILES TO HAVE A NOMINAL DIAMETER OF 12".
 PILE SPACING SHOWN IS AT BOTTOM OF FOOTING.
 PILES SHOWN THUS \odot TO BE BATTERED 3" PER FOOT
 IN THE DIRECTION SHOWN.
 FOR PILE SPACINGS SEE DETAIL B-201.

COMPUTED PILE LOADS TONS PER PILE	
DEAD LOAD + EARTH PRESSURE	38.5
LIVE LOAD	4.9
TOTAL	43.4



FOOTING PLAN
 SCALE 1/8" = 1'-0"