

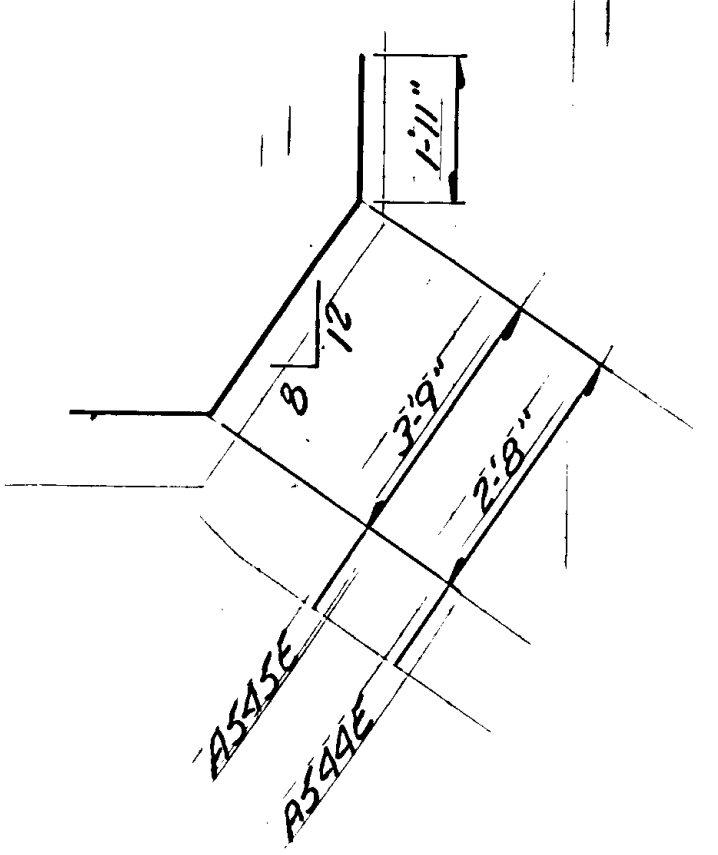
SUMMARY OF QUANTITIES - 2 ABUTMENTS

ITEM	QTY	UNIT	TOTAL
STRUCTURE CONCRETE (1843)	78	CU YD	158
REINFORCEMENT BARS (3743)	123	TON	252
REINFORCEMENT BARS - EPOXY COATED	2830	TON	5260
STRUCTURE EXCAVATION	10,120	CU YD	20,390
C.I.P CONCRETE PILING - DELIVERED	2145	LINEAL FT	4290
C.I.P CONCRETE PILING - DRIVEN	2145	LINEAL FT	4290
R.M. DISK STANDARD PLATE NO. 9300	2	EACH	4

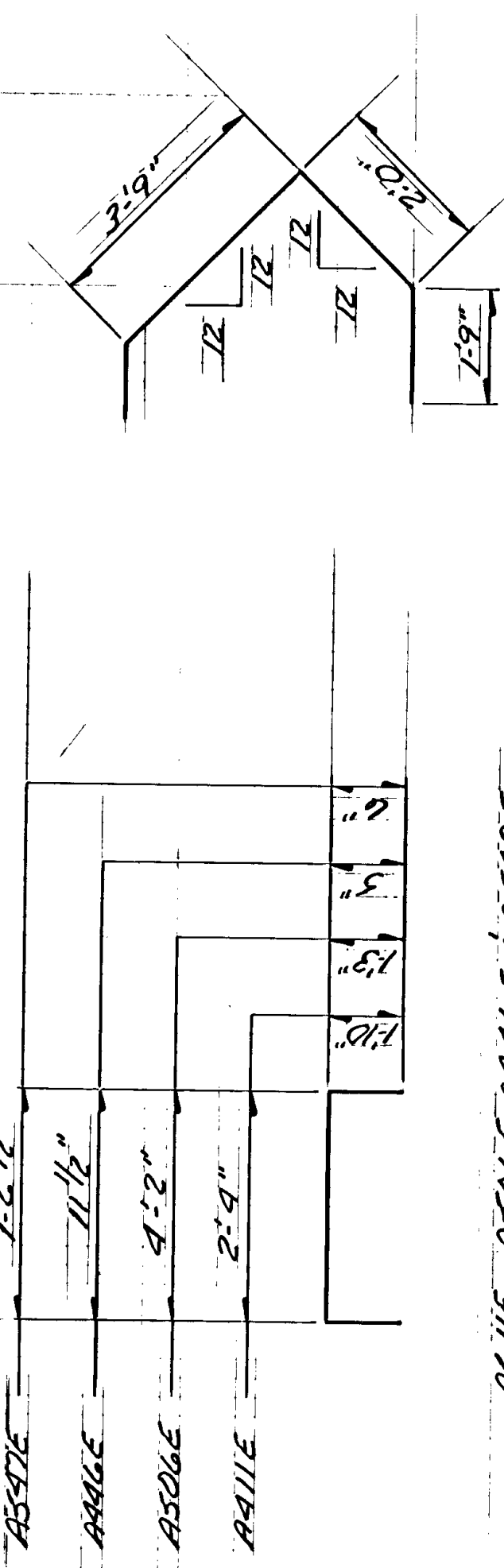
ALL OF REINFORCEMENT - 2 ABUTMENTS

BAR	LABUT	E. ABUT	LENGTH	SHAPE	LOCATION
A601	18		49'-0"	START	FOOTING - LONGITUDINAL
A602	18		48'-0"		"
A504	134		5'-9"	BENT	" - VERTICAL
A504	76		16'-5"	BENT	" - TIES
A505E	26		36'-0"	START	BRIDGE SEAT/PARAPET WALL - LONG.
A505E	100		6'-8"	BENT	" - TIES
A507E	26		25'-6"	START	" PARAPET WALL - LONG.
A508E	26		27'-2"		"
A509E	90		24'-1"	BENT	" - VERTICAL
A610E	4		9'-0"	"	" - CONDUIT SLEEVES
A610E	4		6'-0"	"	"
A512E	1		36'-0"	START	PAVING BRKT - LONGITUDINAL
A513E	40		4'-11"	BENT	" - TIE
A514E	26		4'-3"	START	LINGULAR - DOLLEL
A515E	18		4'-8"		"
A516E	8		3'-9"	"	"
A517E	3		13'-2"	"	"
A518E	3		13'-0"	"	" - HORIZONTAL
A519E	4		13'-2"	"	"
A520E	4		12'-8"	"	"
A521E	2		30'-0"	"	"
A522E	2		30'-2"	"	"
A523E	12		21'-9"	"	"
A524E	12		21'-9"	"	"
A525E	2		19'-2"	"	"
A526E	2		18'-8"	"	"
A527E	8		4'-11"	"	" - VERTICAL
A528E	8		5'-8"	"	"
A529E	5		16'-0"	"	"
A530E	5		13'-2"	"	"
A531E	8		9'-0"	"	"
A532E	8		9'-9"	"	"
A533E	4		20'-1"	"	"
A534E	4		21'-7"	"	"
A535E	6		11'-3"	"	"
A536E	6		12'-0"	"	"
A537E	5		10'-6"	"	"
A538E	5		11'-3"	"	"
A539E	22		2'-9"	"	"
A540E	18		2'-5"	"	"
A541E	44		4'-8"	"	"
A542E	16		12'-9"	BENT	FOOTING
A543E	5		9'-8"	START	FILLET - VERTICAL
A544E	9		6'-2"	BENT	" TIE
A545E	9		7'-7"	"	"
A546E	40		1'-9 1/2"	"	" - LINGULAR - CAP
A547E	12		46'-0"	START	ROADWAY SLAB - LONGITUDINAL
A548E	46		2'-6 1/2"	BENT	" - TIE
A549E	26		36'-8"	START	BRIDGE SEAT/PARAPET WALL - LONG.
A550E	26		23'-6"	"	"
A551E	1		20'-5"	"	"
A552E	1		17'-0"	"	"
A553E	1		19'-4"	"	"
A554E	1		36'-8"	"	"
A555E	1		17'-3"	"	"

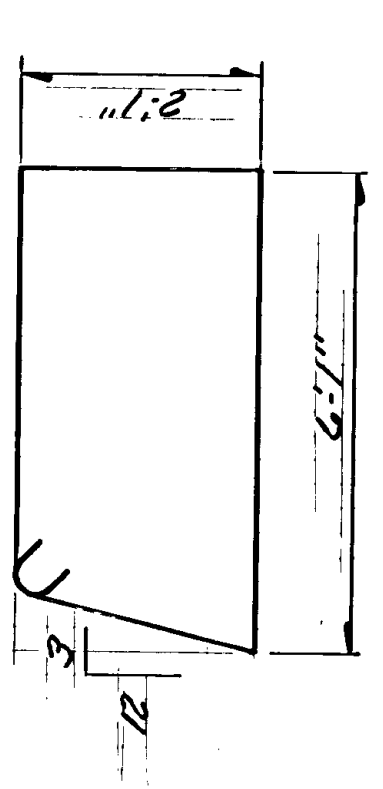
- COUNTY SHALL FURNISH DISKS. PAYMENT FOR PLACING IS TO BE INCLUDED IN PRICE BID FOR OTHER ITEMS. SEE STANDARD PLATE NO. 9301 FOR PLACEMENT.
- SEE SPECIAL PROVISIONS.
- DOES NOT INCLUDE TEST PILES
- 2'-3" MIN. LAP
- CUT 2' FROM 1'
- 1'-11" MIN. LAP



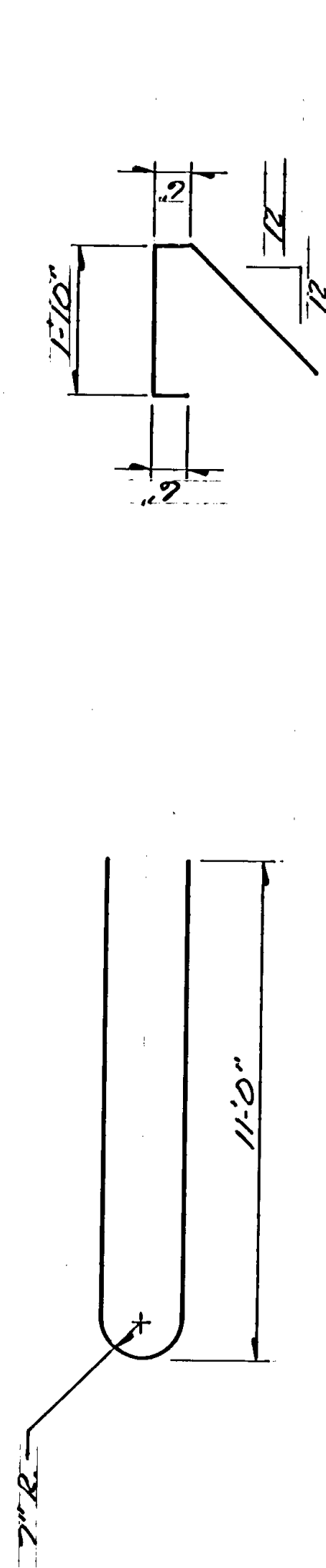
A551E & A555E



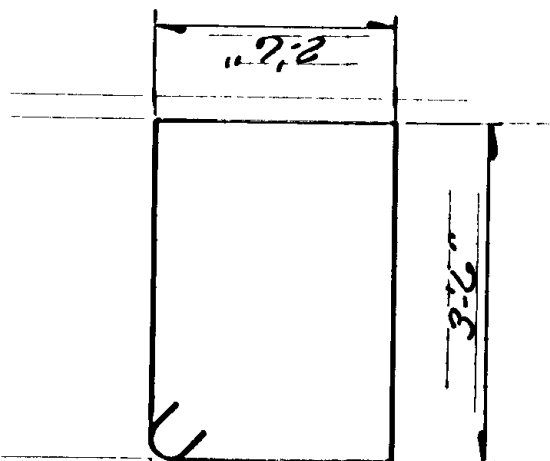
A611E, A506E, A546E & A558E



A504

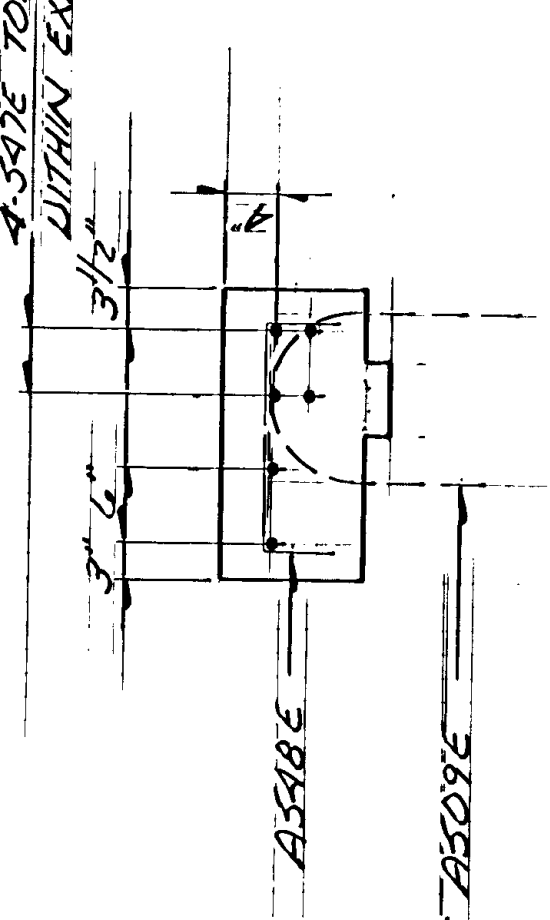


A509E

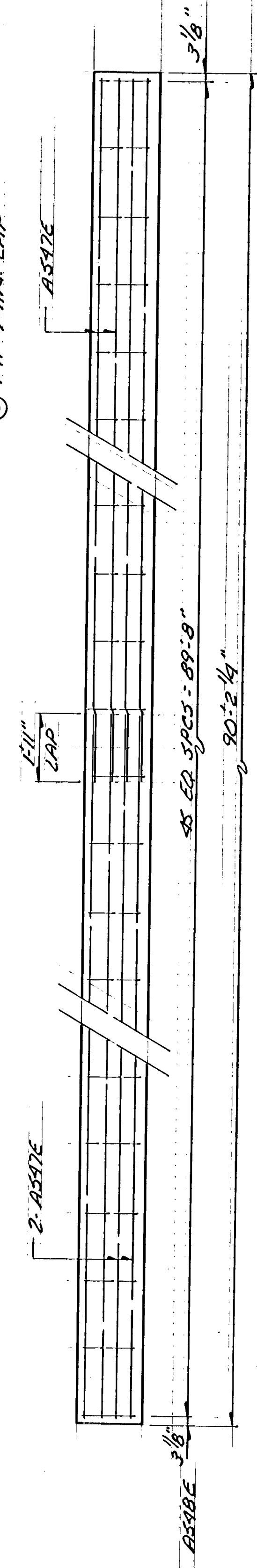


A542E

4-SIDE TOP & BOT PLAGE WITHIN EXPOSED ANCHORAGE



RULY SLAB REINF. DETAIL



RULY SLAB REINF. DETAIL