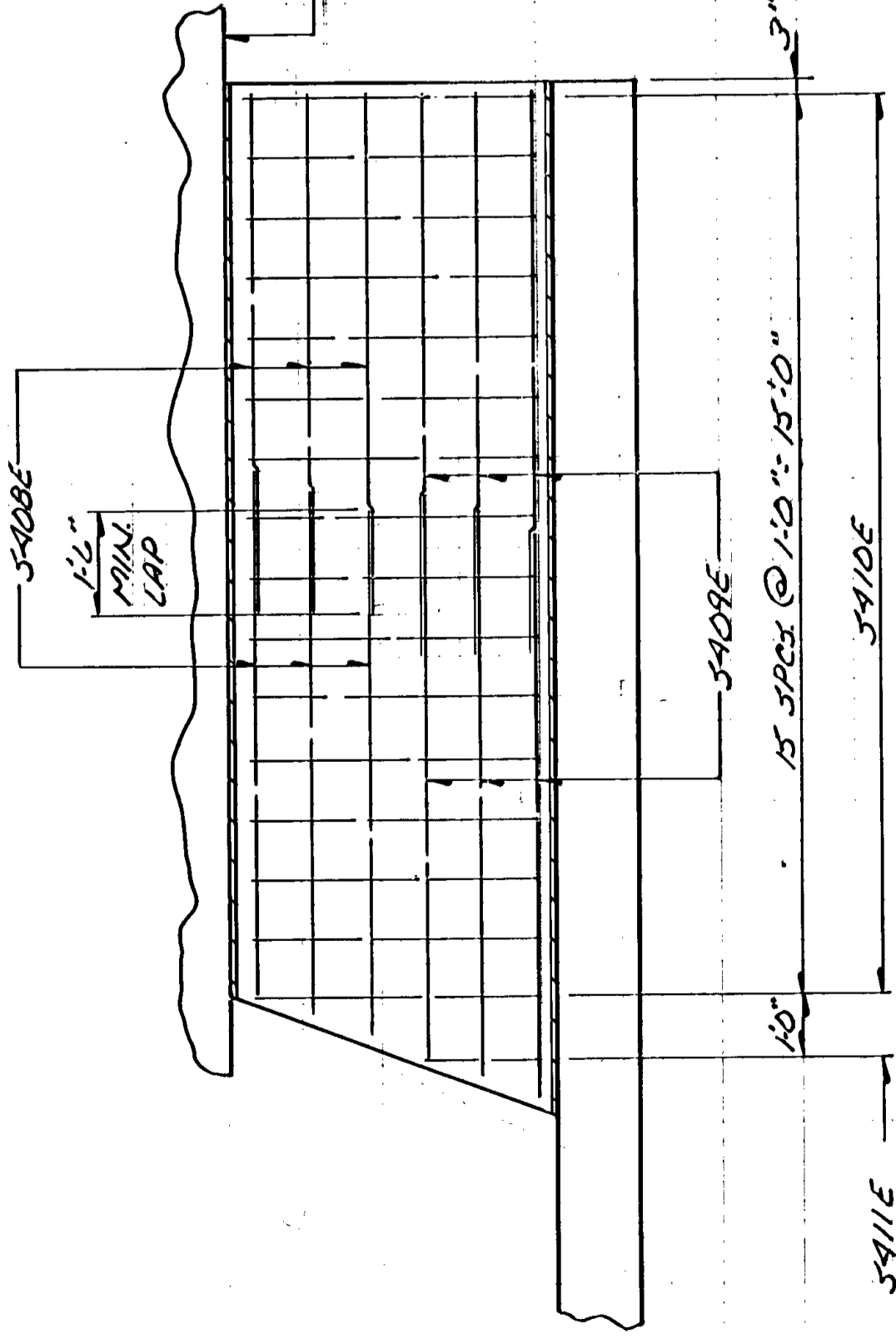


1/2" R

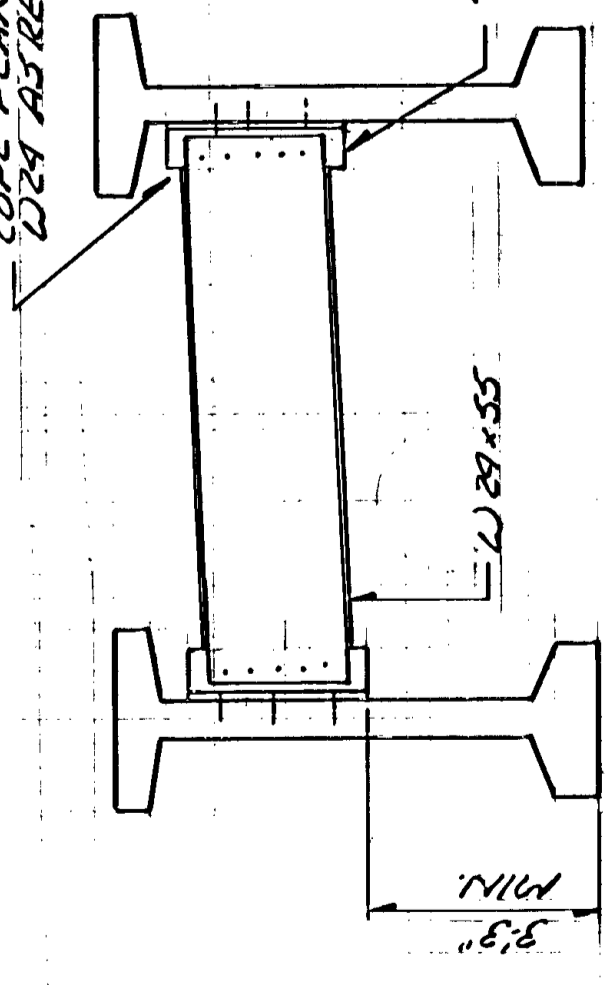
DIAPHRAGM SUPPORT

NOTE:
SEE DET B406 FOR FASTENING
PLATE TO PRESTR. BEAMS &
TO DIAPHRAGMS.



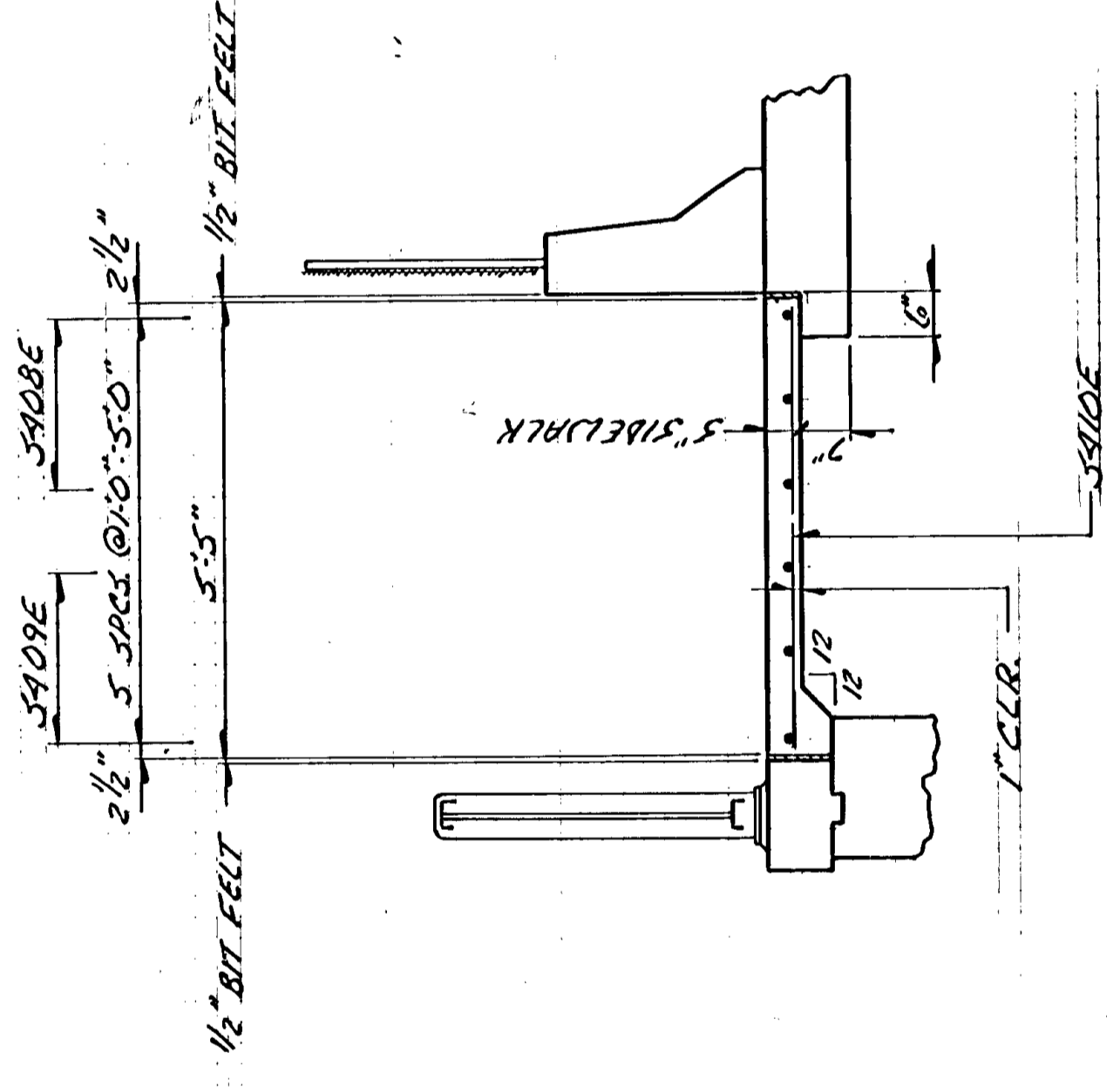
SIDEWALK PLAN

COPE FLANGE ON
L204 AS REQ'D TO FIT.

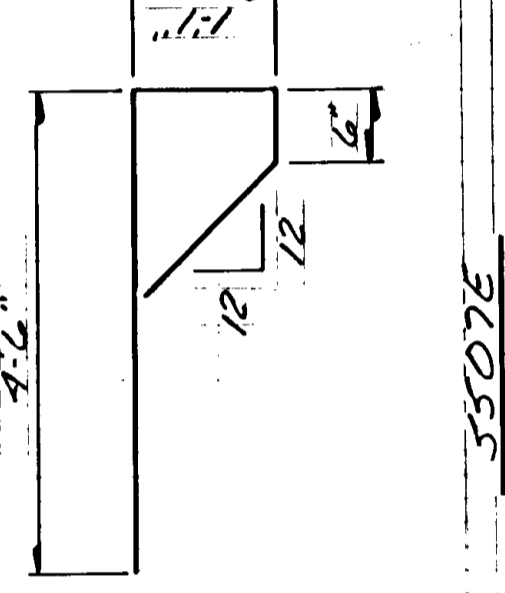


DIAPHRAGMS @ FACIA BAYS

BACKFACE OF
J-BARRIER



SECTION D-D



3507E

BILL OF REINFORCEMENT - SUPERSTRUCTURE

| BAR | NO | LENGTH | START | LOCATION |
|-------|------|---------|-------|-------------------------|
| 3409E | 975 | 37'-7" | STRT | SLAB - LONGITUDINAL |
| 3509E | 1260 | 40'-0" | " | " |
| 3509E | 2154 | 45'-11" | " | " |
| 3509E | 1077 | 41'-6" | " | " - TRANSVERSE, TOP |
| 3509E | 1077 | 50'-6" | " | " - TRANSVERSE, BOTTOM |
| 3509E | 336 | 15'-0" | " | " |
| 3507E | 108 | 7'-6" | BENT | " @ ENDS |
| 3409E | 24 | 8'-8" | STRT | SIDEWALK - LONGITUDINAL |
| 3409E | 24 | 9'-9" | " | " |
| 3409E | 24 | 5'-1" | " | " - TRANSVERSE |
| 3411E | 4 | 1'-0" | " | " |
| 3412E | 90 | 7'-0" | BENT | END DIAPHRAGM |
| 3413E | 36 | 2'-0" | STRT | " |
| 3714E | 36 | 8'-8" | " | " |
| 3615E | 18 | 15'-0" | BENT | " |
| 3716E | 32 | 5'-0" | STRT | " |

- 1 1/2" LAP 15 LINES
- 2 1/4" LAP 14 LINES
- 3 5/8" LAP
- 4 1/4" MAIN LAP

SUMMARY OF QUANTITIES - SUPERSTRUCTURE

| | | |
|--|---------|-----------|
| OVERLAY CONCRETE (C1017A) | 36,650 | 58.5 FT |
| BRIDGE SLAB CONCRETE (3X26) | 45,628 | 58.5 FT |
| STRUCTURE CONCRETE (3X26) | 23 | CU YD |
| TYPE J RAILING CONCRETE (3X46) | 1160 | LINEAL FT |
| REINFORCEMENT BARS EPOXY COATED | 376,970 | POUNDS |
| WIRE FENCE TYPE 5-1 | 1160 | LINEAL FT |
| ORNAMENTAL METAL RAIL TYPE 5 | 1150 | LINEAL FT |
| PRESTR. CONC. BEAMS TYPE B1-134 | 40 | EACH |
| PRESTR. CONC. BEAMS TYPE B1 | 5326 | LINEAL FT |
| DIAPHR. FOR CONC. BEAMS TYPE B1 | 1967 | LINEAL FT |
| STEELWALK CONCRETE (3X46) | 378 | 30.5 FT |
| EXP. W/ DEVICE, TYPE 3 | 170 | LINEAL FT |
| FINED CURVED PLATE BRG. ASSEMBLY, TYPE 1 | 20 | EACH |
| EXP. CURVED PLATE BRG. ASSEMBLY, TYPE 1 | 40 | EACH |
| EXP. CURVED PLATE BRG. ASSEMBLY, TYPE 2 | 20 | EACH |
| BEARING ASSEMBLY | 20 | EACH |
| NAMEPLATE (SEE DETAIL B 20) | | |
| PREFORMED JOINT FILLER (SEE LIST BELOW) | | |
| CONDUIT SYSTEM (TELEPHONE) | 1 | 2.50UM |
| CONDUIT SYSTEM (POWER, NORTH J-BARRIER) | 1 | 2.50UM |
| CONDUIT SYSTEM (POWER, SOUTH J-BARRIER) | 1 | 2.50UM |
| CONDUIT SYSTEM (LIGHTING) | 1 | 2.50UM |
| CONDUIT SYSTEM (WATERMAIN) | 1 | 2.50UM |
| CONDUIT SYSTEM (GAS) | 1 | 2.50UM |
| CONDUIT SYSTEM (FUTURE) | 1 | 2.50UM |

- 1 INCLUDES RAIL QUANTITIES
- 2 OVERLAY CONCRETE (C1017A) APPROX VOLUME IS 1018 CU YDS.
- 3 BRIDGE SLAB CONC (3X26) APPROX VOLUME IS 180 CU YDS.
- 4 END DIAPHRAGM CONCRETE
- 5 APPROX VOLUME IS 127 CU YDS.
- 6 SIDEWALK CONC (3X46) APPROX VOLUME IS 28 CU YDS.
- 7 PAYMENT FOR BEAMS INCLUDED IN ITEM PRESTR CONC BEAMS B1 PER LINEAR FOOT
- 8 SEE SPECIAL PROVISIONS
- 9 PAYMENT FOR BEARINGS INCLUDED IN ITEM BEARING ASSEMBLY PER EACH
- 10 INCLUDED IN PRICE B1A FOR OTHER ITEMS.
- 11 CHAIN LINK FENCE ON TOP OF BARRIER.

LIST OF PREFORMED CURV JOINT FILLER

| 66-1" x 11" x 17" | RAIL DEFLECTION JOINTS |
|-------------------|------------------------|
| | |
| | |

MINNESOTA DEPARTMENT OF TRANSPORTATION

BRIDGE NO 02595

SUPERSTRUCTURE DETAILS

APPROVED

SHEET NO. OF SHEETS 02595-1

C.P. 88-09-1/4