

- ① QUANTITIES FOR WATERMAIN SYSTEM
- ② SLEEVES THRU ABUTMENTS - 26" Ø 1A. 2 EACH
- ③ 1" Ø THREADED INSERTS 108 EACH

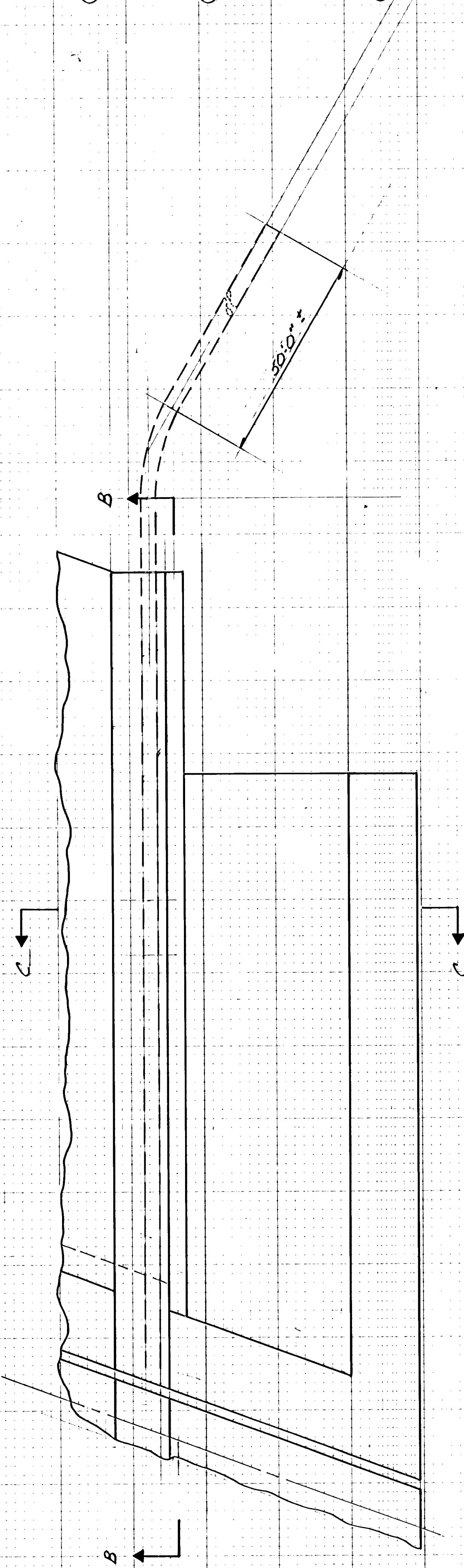
- ④ QUANTITIES FOR GAS MAIN SYSTEM
- ⑤ SLEEVES THRU ABUTMENTS - 12" Ø 1A. 2 EACH
- ⑥ 1" Ø THREADED INSERTS 108 EACH

- ⑦ QUANTITIES FOR FUTURE UTILITY SYSTEMS
- ⑧ SLEEVES THRU ABUTMENTS - 6" Ø 1A. 18 EACH
- ⑨ 3/8" Ø THREADED INSERTS 108 EACH
- ⑩ 5" Ø PVC CONDUIT 1260 L.F.
- ⑪ HANGER ROLLER ASSEMBLY 4 EACH
- ⑫ END CAPS - 5" Ø PVC 36 EACH
- ⑬ EXPANSION & DEFLECTION FITTINGS 18 EACH

- ⑭ QUANTITIES FOR TELEPHONE CONDUIT SYSTEM
- ⑮ 4" Ø FIBERGLASS CONDUIT 680 L.F. 6 EACH
- ⑯ BENDS 6 EACH
- ⑰ END CAPS - 4" Ø F.R.E. 2 EACH
- ⑱ EXPANSION & DEFLECTION FITTINGS 2 EACH

- ⑳ QUANTITIES FOR POWER CONDUIT SYSTEM
- ㉑ ITEM N-RAIL 5-RAIL UNIT EACH
- ㉒ BENDS 6 12 EACH
- ㉓ END CAPS - 5" Ø F.R.E. 2 4 EACH
- ㉔ 5" Ø FIBERGLASS CONDUIT 680 1360 L.F.
- ㉕ EXPANSION & DEFLECTION FITTINGS 2 4 EACH

- ① ITEMS LISTED ARE TO BE INCLUDED IN THE PRICE BID FOR WATERMAIN SYSTEM.
- ② ITEMS LISTED ARE TO BE INCLUDED IN THE PRICE BID FOR GAS MAIN SYSTEM.
- ③ ITEMS LISTED ARE TO BE INCLUDED IN THE PRICE BID FOR FUTURE UTILITY SYSTEM.
- ④ ITEMS LISTED ARE TO BE INCLUDED IN THE PRICE BID FOR TELEPHONE CONDUIT SYSTEM.
- ⑤ ITEMS LISTED ARE TO BE INCLUDED IN THE PRICE BID FOR POWER CONDUIT SYSTEM.
- ⑥ SEE SPECIAL PROVISIONS.
- ⑦ SEE SHI 29 FOR HANGER DETAILS.
- ⑧ BENDS WILL HAVE A 42" R., 30° ANGLE & A 22" LENGTH.
- ⑨ BENDS WILL HAVE A 40" R., 30° ANGLE & A 24" LENGTH.
- ⑩ SLEEVES SHALL BE AS PER SPEC. 316.2 & SHALL AS PER SPEC. 309A.
- ⑪ CONC. INSERTS SHALL BE AN APPROVED TYPE MALLEABLE IRON MATERIAL AS PER SPEC. 322A, GRADE 350B TYP. AFTER CALL



DETAIL "A"
I.E. CORNER SHOWN, OTHER CORNERS SIMILAR

CONTRACTOR SHALL CUT REINFC AS REQ'D. FOR PASSAGE OF CONDUIT.

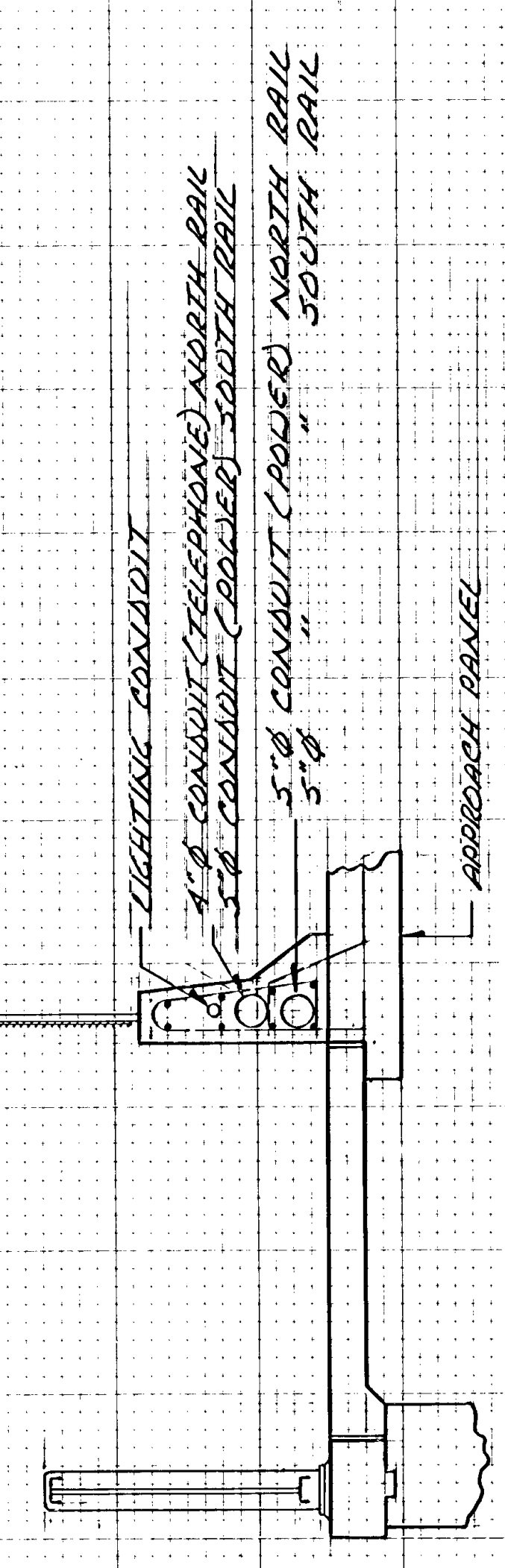
SEE SHI 31A FOR DETAIL OF LIGHTING CONDUIT (END OF RAIL)

FINISHED GRADE

5'-0"

20" MIN.

SECTION B-B



SECTION C-C

MINNESOTA DEPARTMENT OF TRANSPORTATION	
BRIDGE NO. 02545	
UTILITY DETAILS	
APPROVED:	
SHEET 3040FALS-SHEETS	02545
C.P. 88-09-116	027