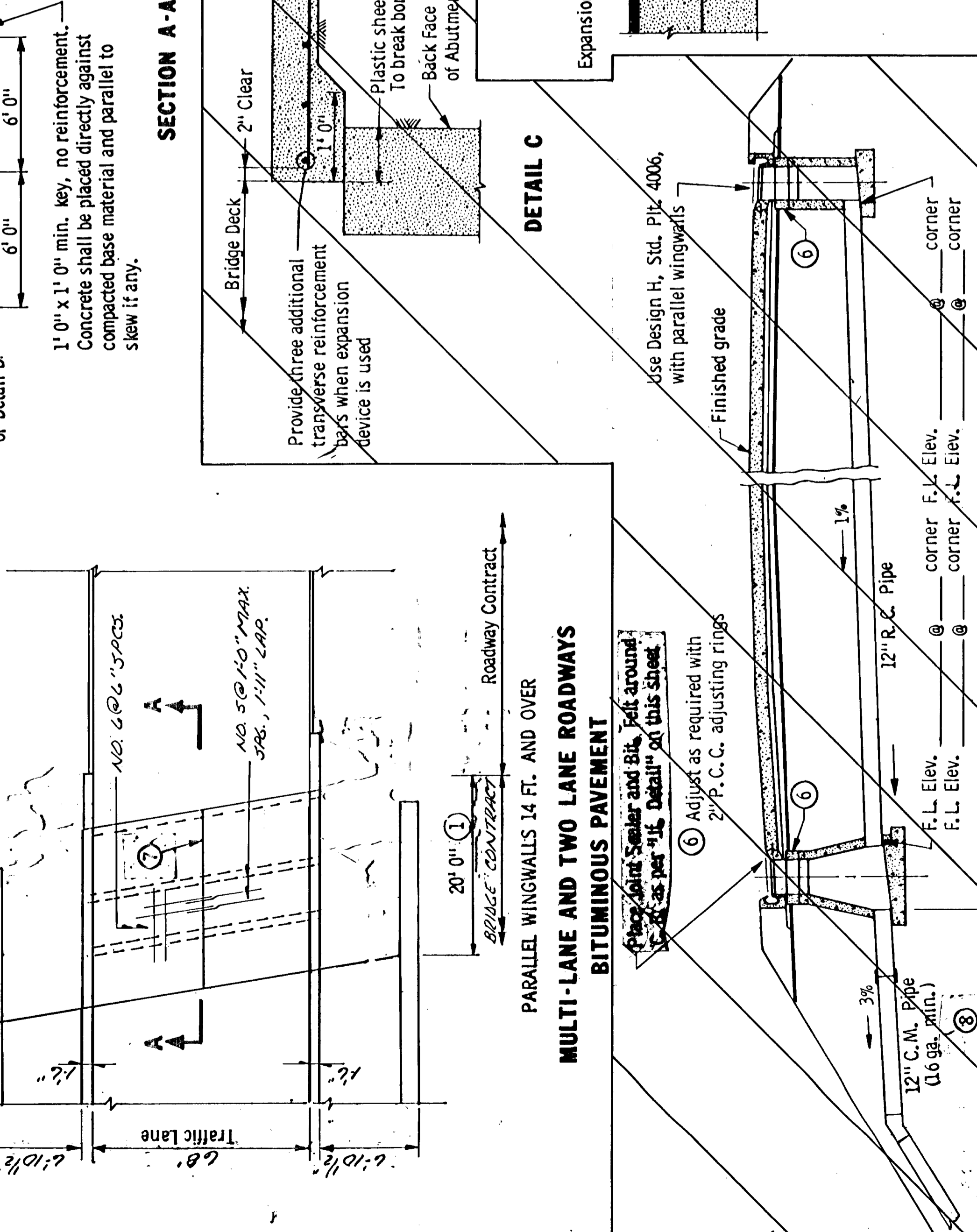
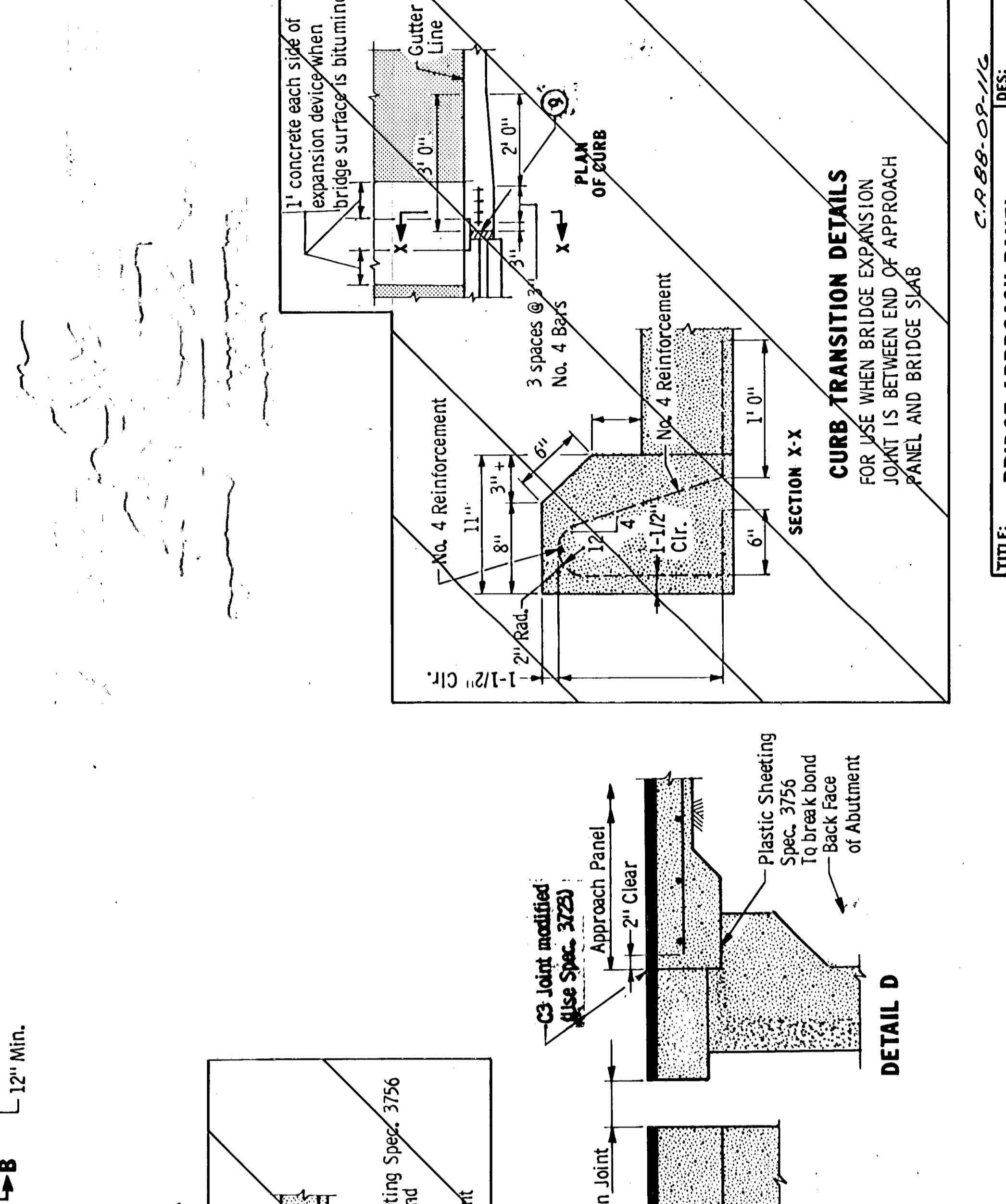
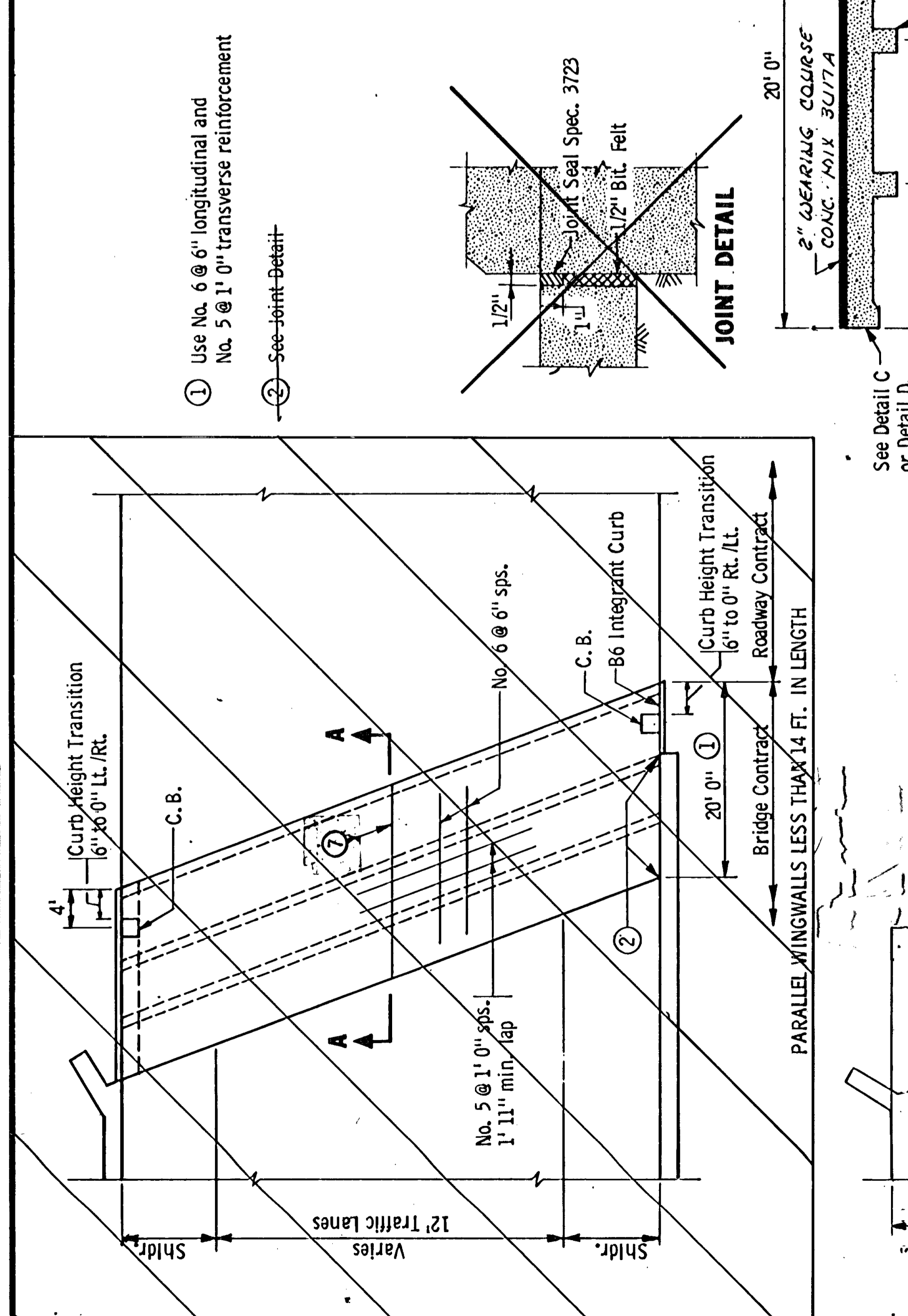
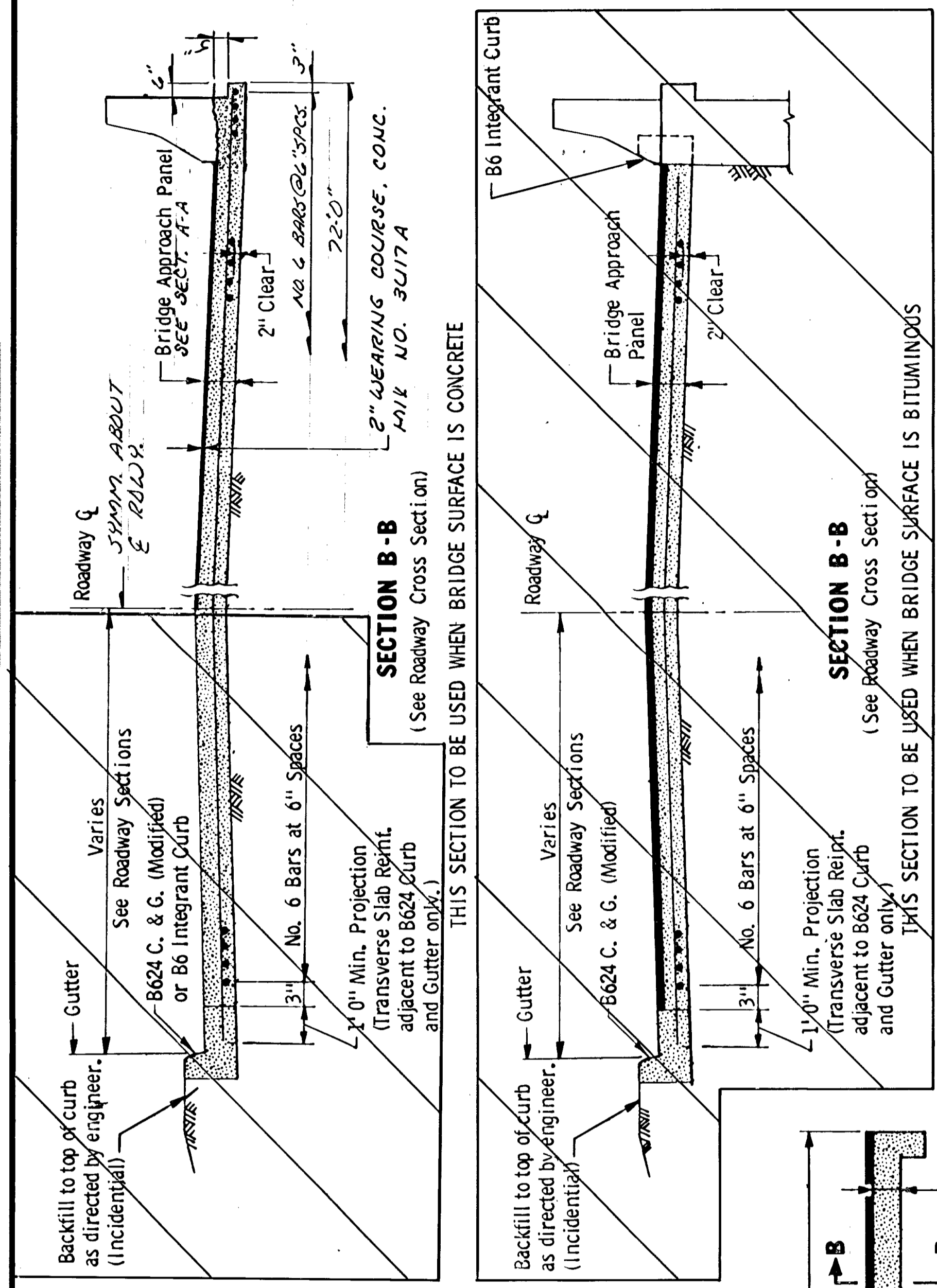


The summary of quantities for approach panel is as shown below. Any additional minor items and slight changes of quantities required shall be furnished by the contractor with no additional compensation, except as noted.

ITEM	*MANUAL REFERENCE
Sodding at Pipe Culverts	Std. Pits. 9102
Riprap at CMP Outlets	Std. Pits. 3134
Metal Apron for CM Pipe	Std. Pits. 3123
Catch Basin Details	Std. Pits. 7100
Catch Basin Details	Std. Pits. 4002
Precast Concrete Base	Std. Pits. 4006
Catch Basin Frame	Std. Pits. 4011
Catch Basin Curb Box	Std. Pits. 4129
Catch Basin Grate	Std. Pits. 4160
Catch Basin Installation	Std. Pits. 4151
Metal Pipe Flume	Std. Pits. 7111
Longitudinal Joints	Std. Pits. 5000
Integration Curbs	Std. Pits. 1140
Integration Joints	Std. Pits. 7000
Integration Joint	Std. Pits. 1120
Conc. Short Cone & Adj. Ring	Std. Pits. 4010

*Specification Ref. Std. Pits. 0001 & 0002
Reinforcement shall be lapped as per Spec. 2472.3D

SUMMARY OF QUANTITIES FOR BRIDGE APPROACH PANELS	
Concrete Mix No. 3X42	727 Cu. Yd.
Catch Basins	Req'd.
Metal Apron	Req'd.
Reinforcement Bars (Epoxy)	15,310 Lbs.
12" C.M. Pipe Drain	Lin. Ft.
Curb Design	Lin. Ft.
12" R.C. Pipe Drain	17 Cu. Yd.
CONC. MIX 3X17A	17 Cu. Yd.
Sod	Sq. Yd.
Random Riprap Class "A"	Cu. Yd.



① Use No. 6 @ 6" longitudinal and No. 5 @ 1' 0" transverse reinforcement
② See Joint Detail
③ Quantities listed are for approach panels at both ends of bridge
④ The Volume of concrete shown is based on an average slab depth of 12" plus the volume of keys and sills as dimensioned. (Concrete for Curb Design 301.601 is not included in this quantity.)
⑤ Includes all concrete work and all castings and appurtenances necessary to construct the catch basins as shown and noted.
⑥ Permissible L2KT longitudinal joint. See Standard Plan Sheet 5-297.221.
⑦ Pipe drains in location shown to be paid for by the lineal foot as a separate item.
⑧ Leave a void between junction of bridge railing and curb 4" min. F.H. void with polystyrene. Fig. 5-397.308.
Revised: July 23, 1982 Approved: June 13, 1982