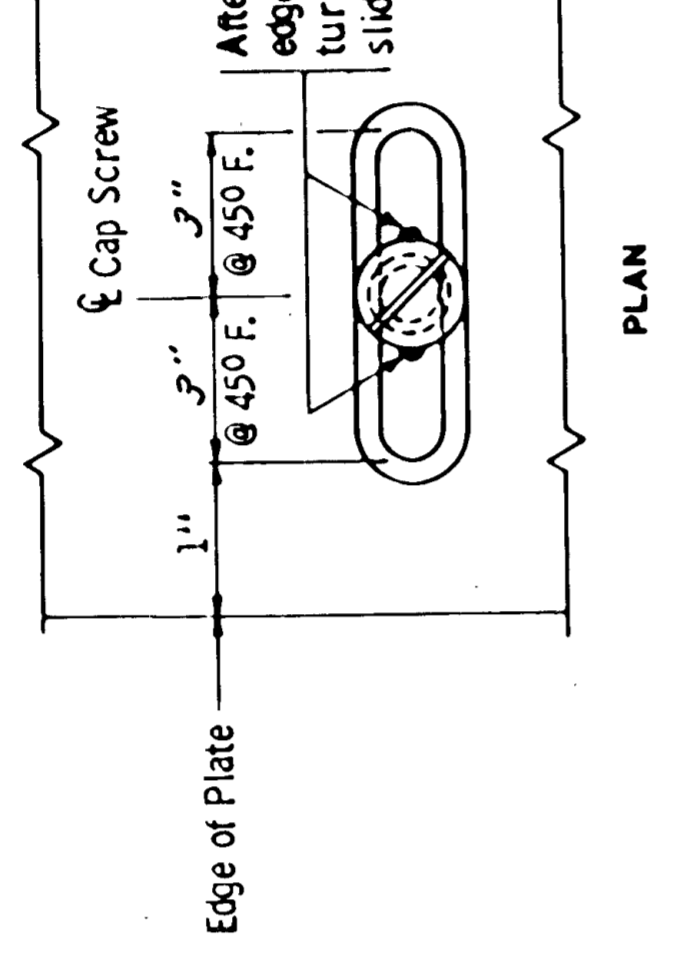
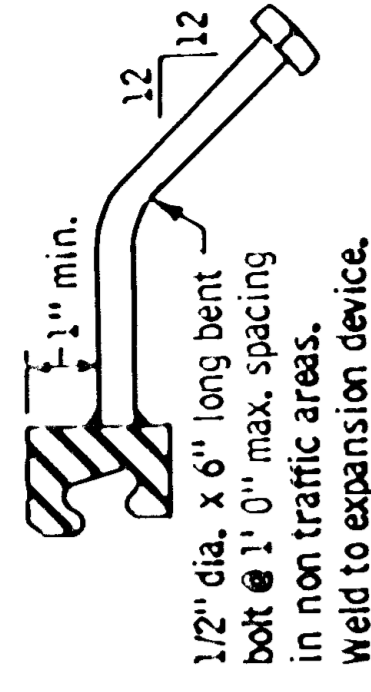
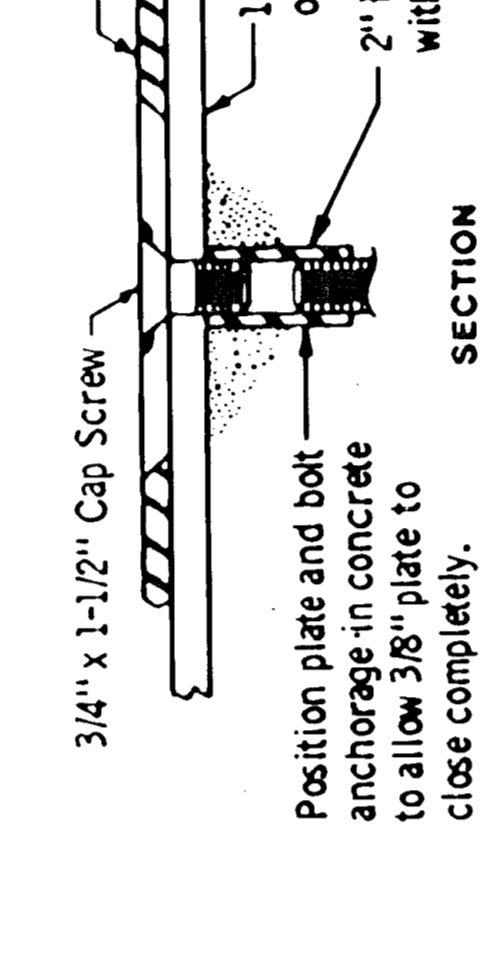


SECTION B-B

BENT BOLT DETAIL



SECTION C
SLOTTED HOLE & CAP SCREW



DETAIL D

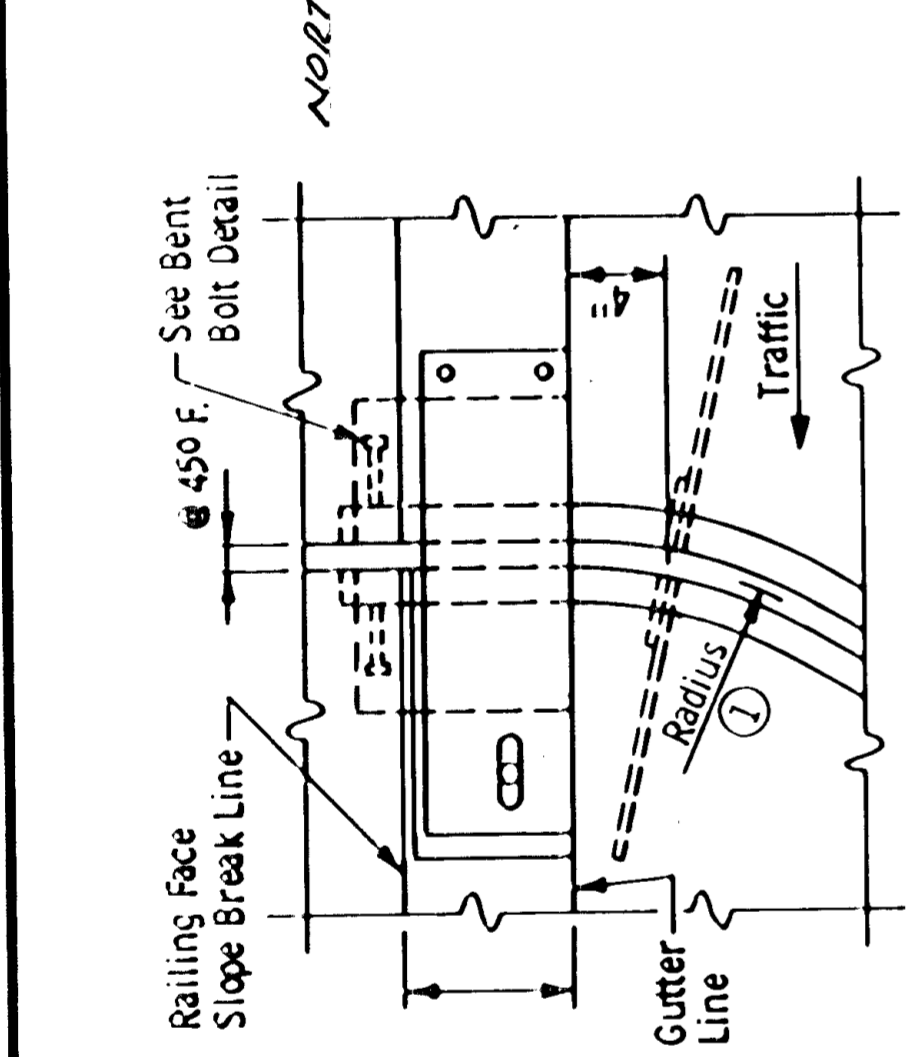
SECTION E-E

NOTES:
Galvanize structural steel after fabrication as per Spec. 3394.
Joints in roadway plate or extrusion shall be located at breaks in transverse profile and as otherwise required. Joints shall be close fit and welded. Repair after welding as per Spec. 2471.3L.
Structural steel shall comply with Spec. 3306, Spec. 3307 & Spec. 3309.
Expansion device shall be straightened to a tolerance of 1/8" in 10 ft.
Cap screws shall be countersunk 1/16" below top of plate.
Galvanize screws and nuts as per Spec. 3392.
See superstructure sheets for expansion device alternate at railing.
When expansion devices are used at ends of bridge, the bridge contractor shall furnish expansion device and gland. The roadway contractor shall install the part of the expansion device which includes the gland as shown on this sheet.

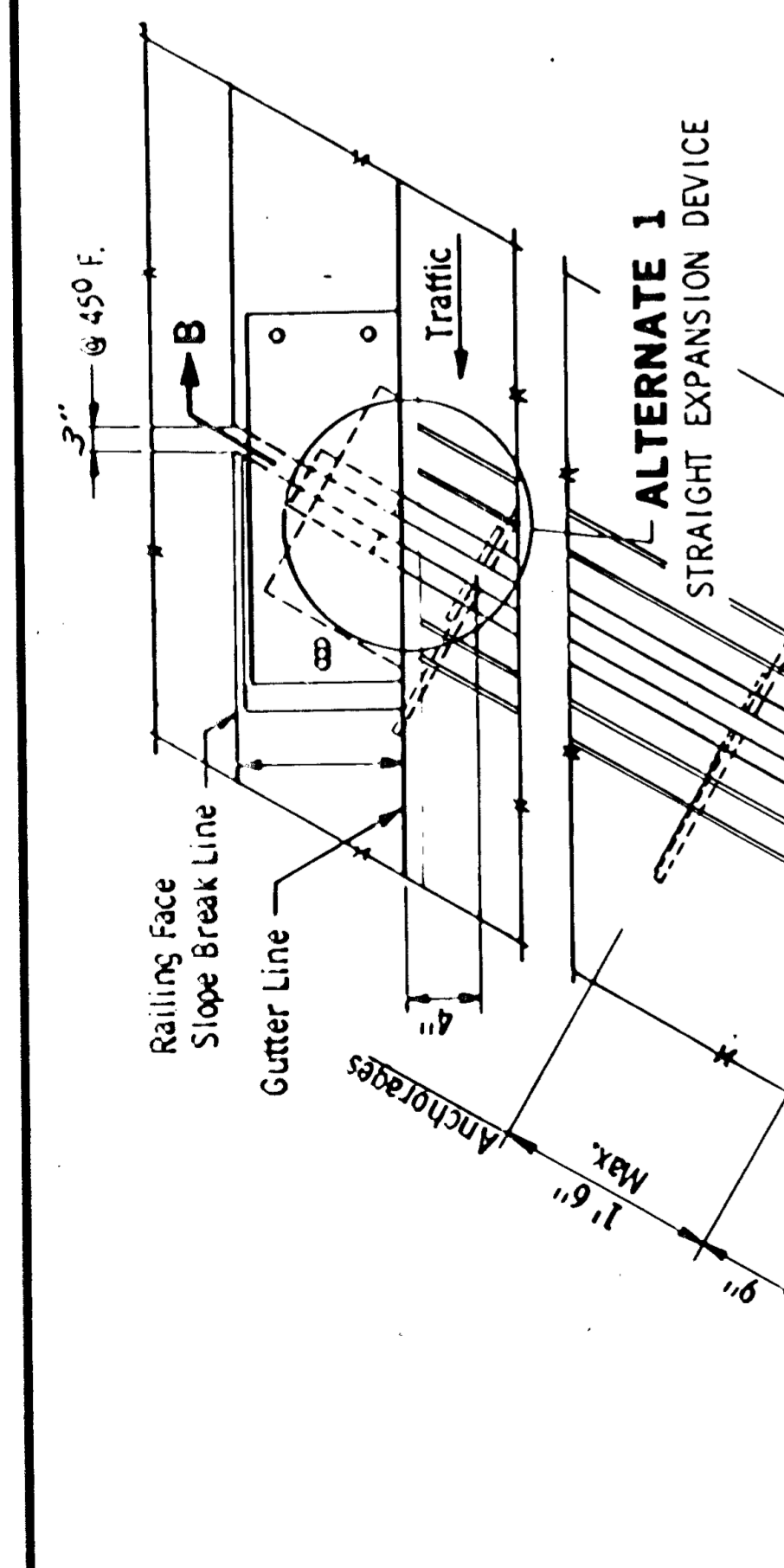
- ① Varies 18" to 24"
- ② Dimension along centerline of joint.
- ③ For roadway skewers over 250 use 45°.
- ④ 5/8" max. when Snowplow Fingers are used. Use 1/8" (with 1/4" max.) when Snowplow Fingers are not used.

FIG. 5-397.627
Revised: October 15, 1982 Approved: July 16, 1982

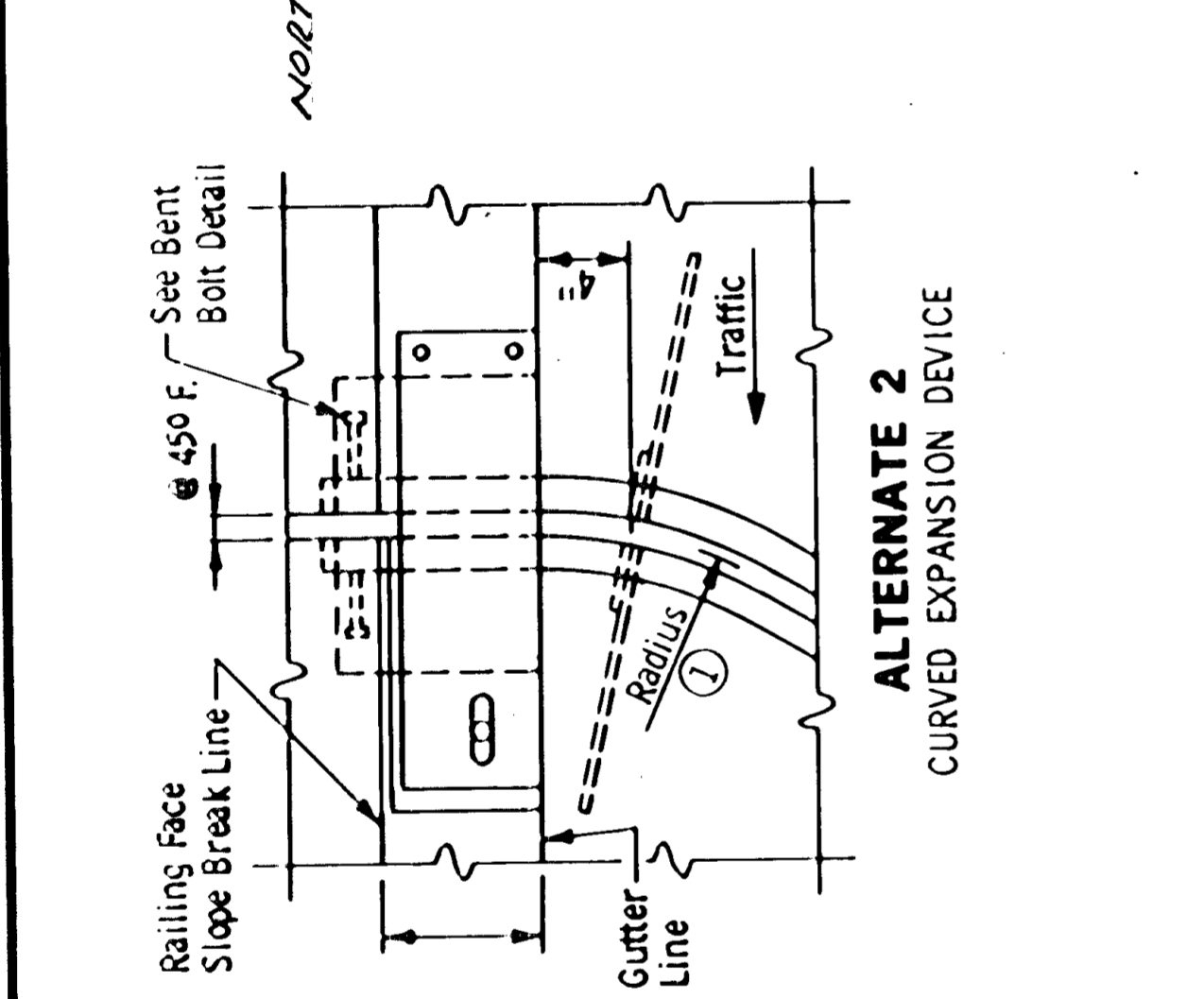
Bridge No. 02545
Sheet No. 35A of 46A Sheets



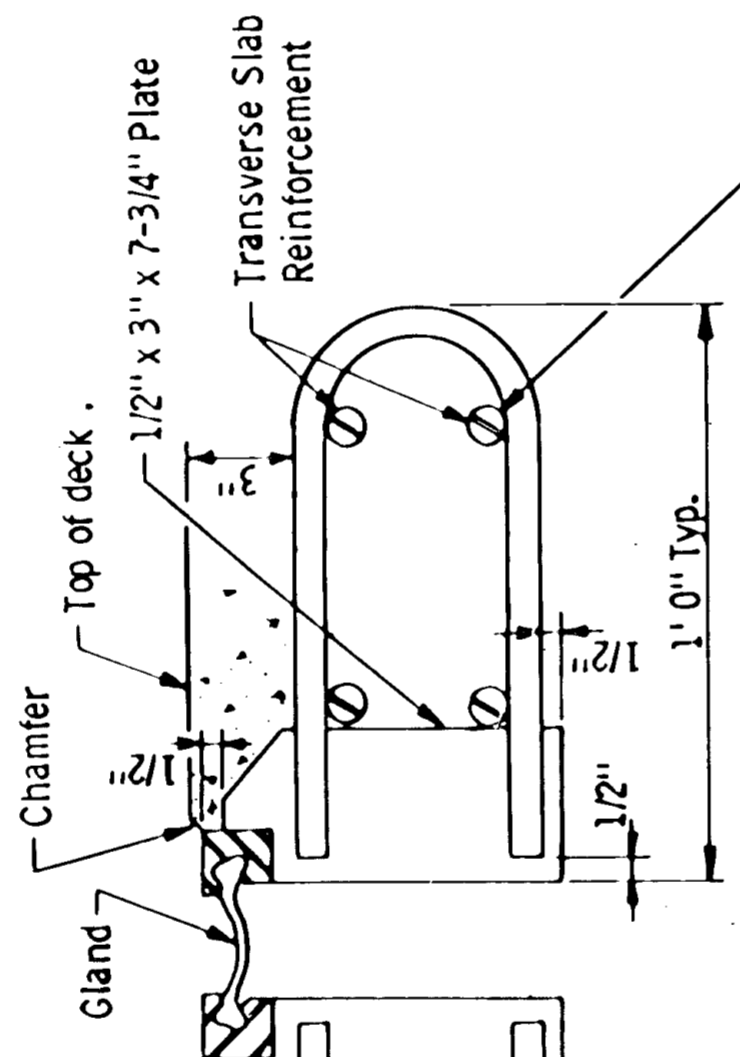
ALTERNATE 1
STRAIGHT EXPANSION DEVICE



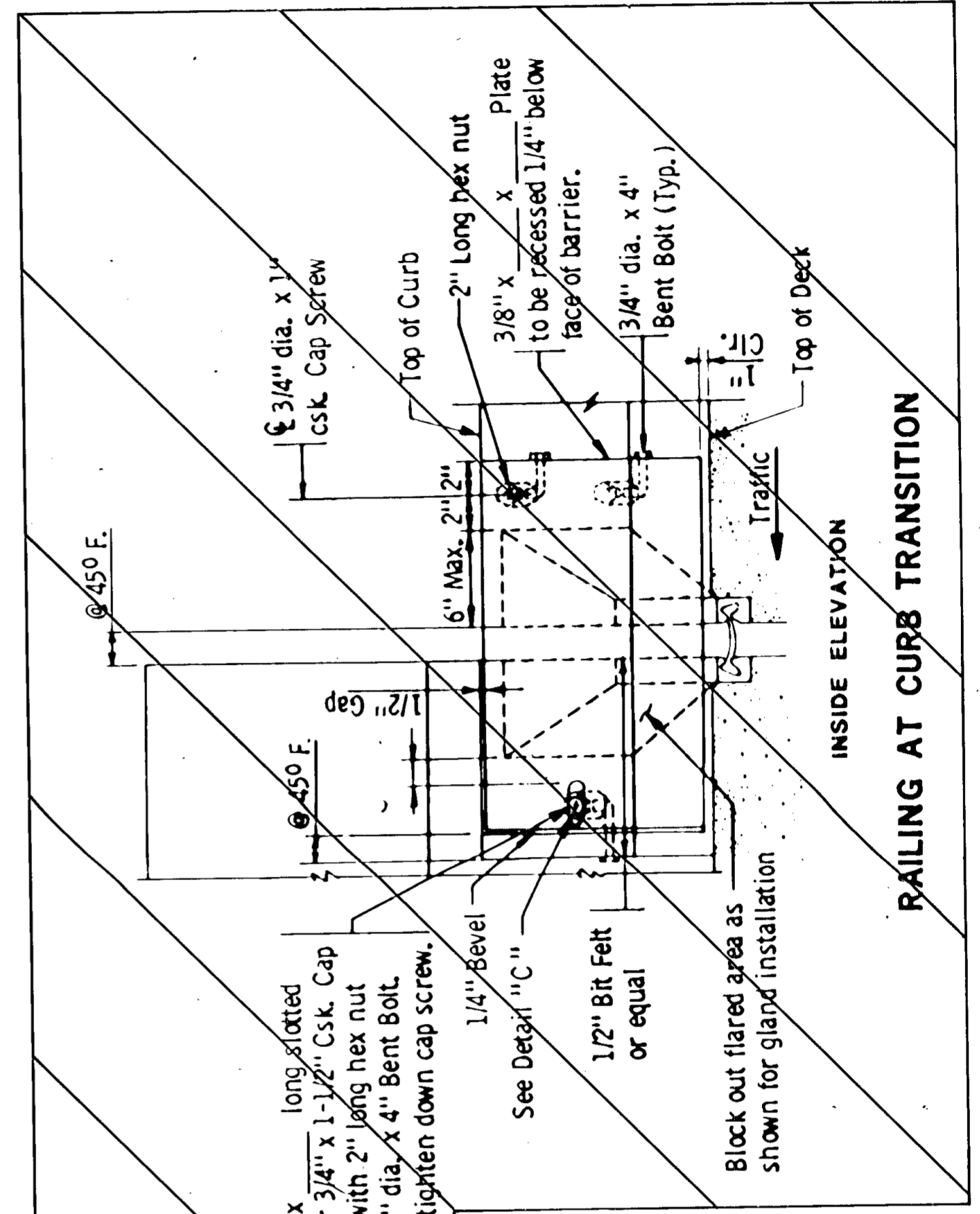
ALTERNATE 2
CURVED EXPANSION DEVICE



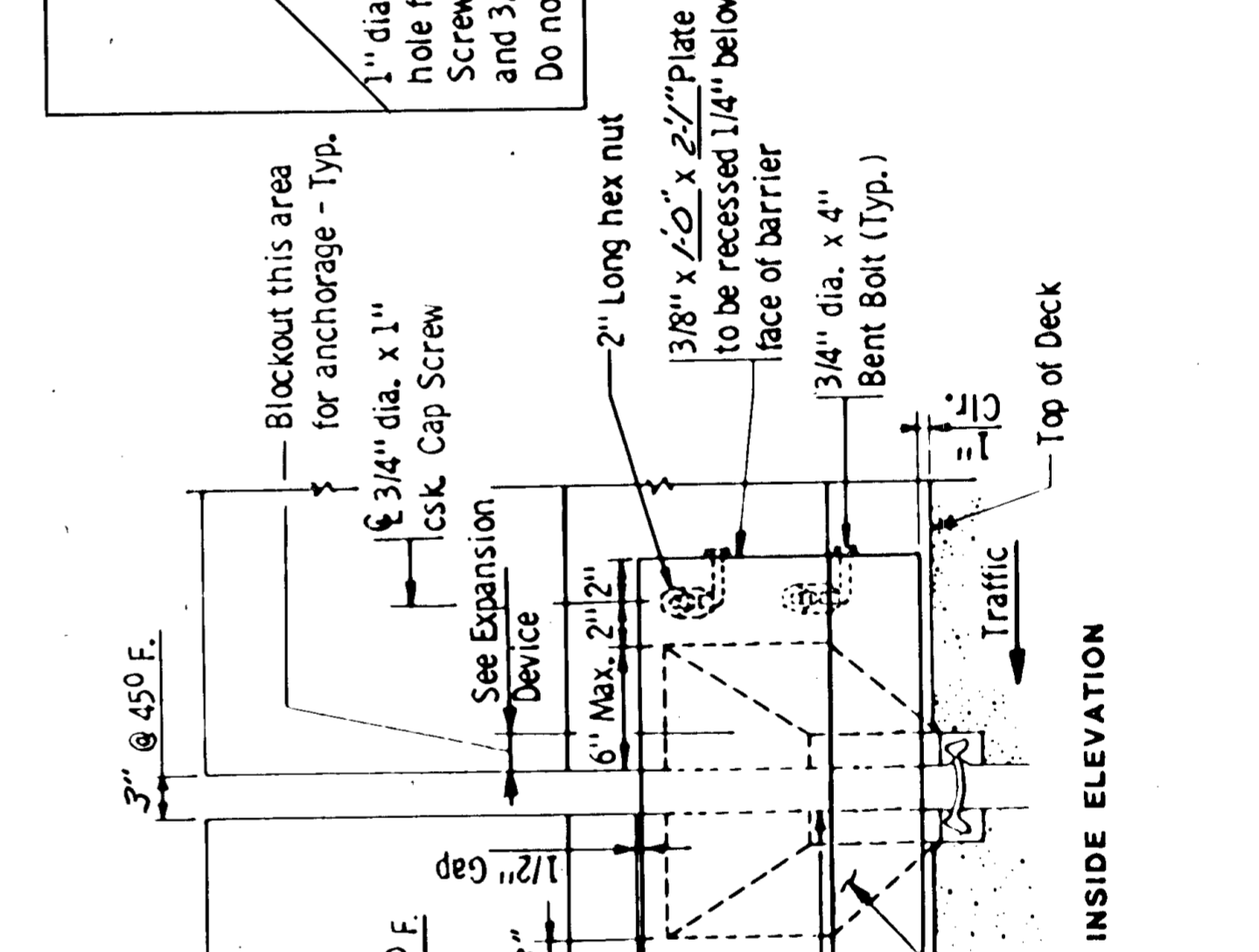
SECTION A-A
ANCHORAGE



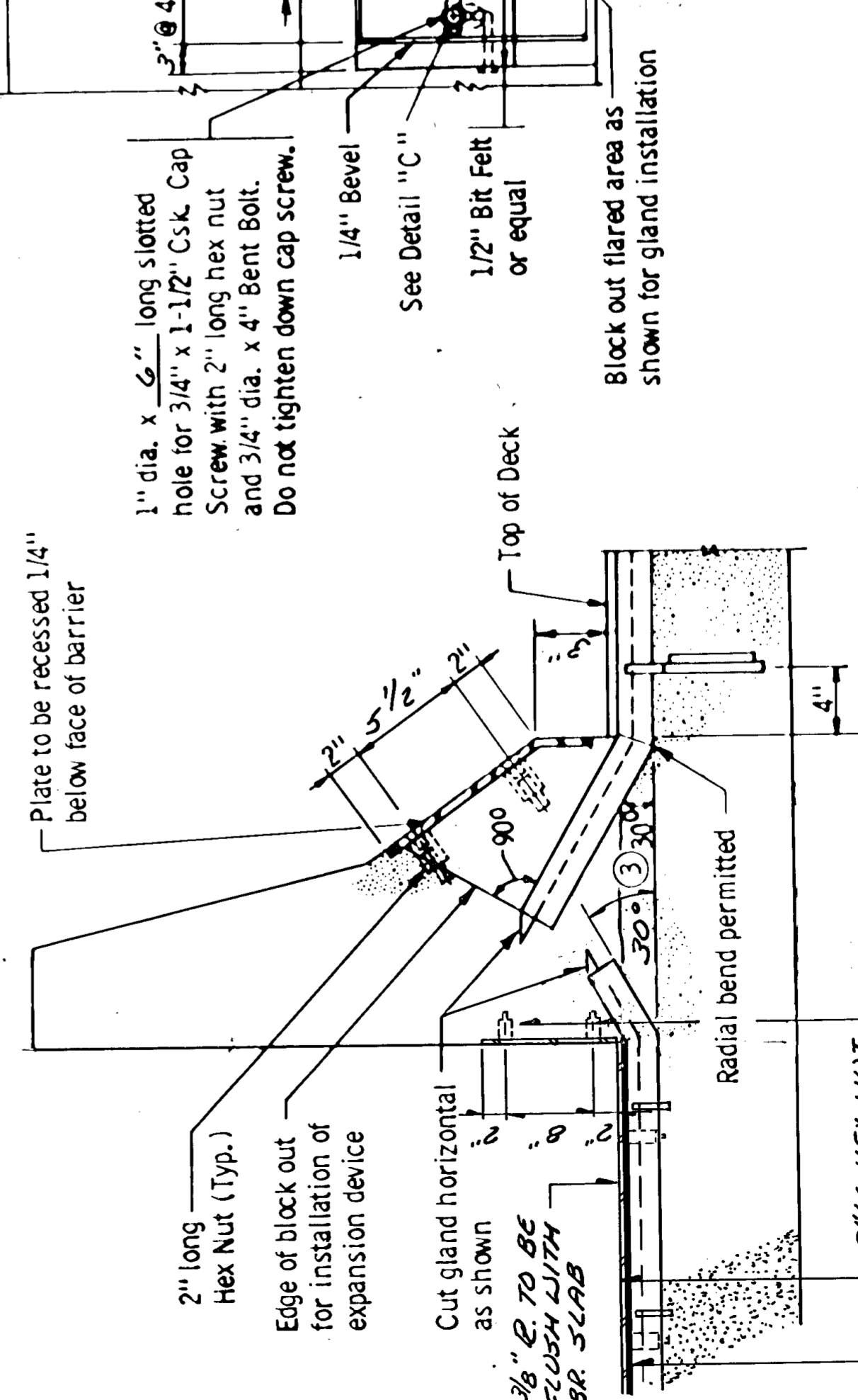
DETAIL E



RAILING AT CURB TRANSITION



RAILING OR MEDIAN



SECTION

RAILING OR MEDIAN
SQUARE BRIDGE APPLICATION WITH TYPE J BARRIER

C.P. 88-09-116

DESIGN: APPROVED: DATE: SHEET: 35A OF 46A SHEETS
TITLE: WATERPROOF EXPANSION DEVICE WITH TYPE J BARRIER