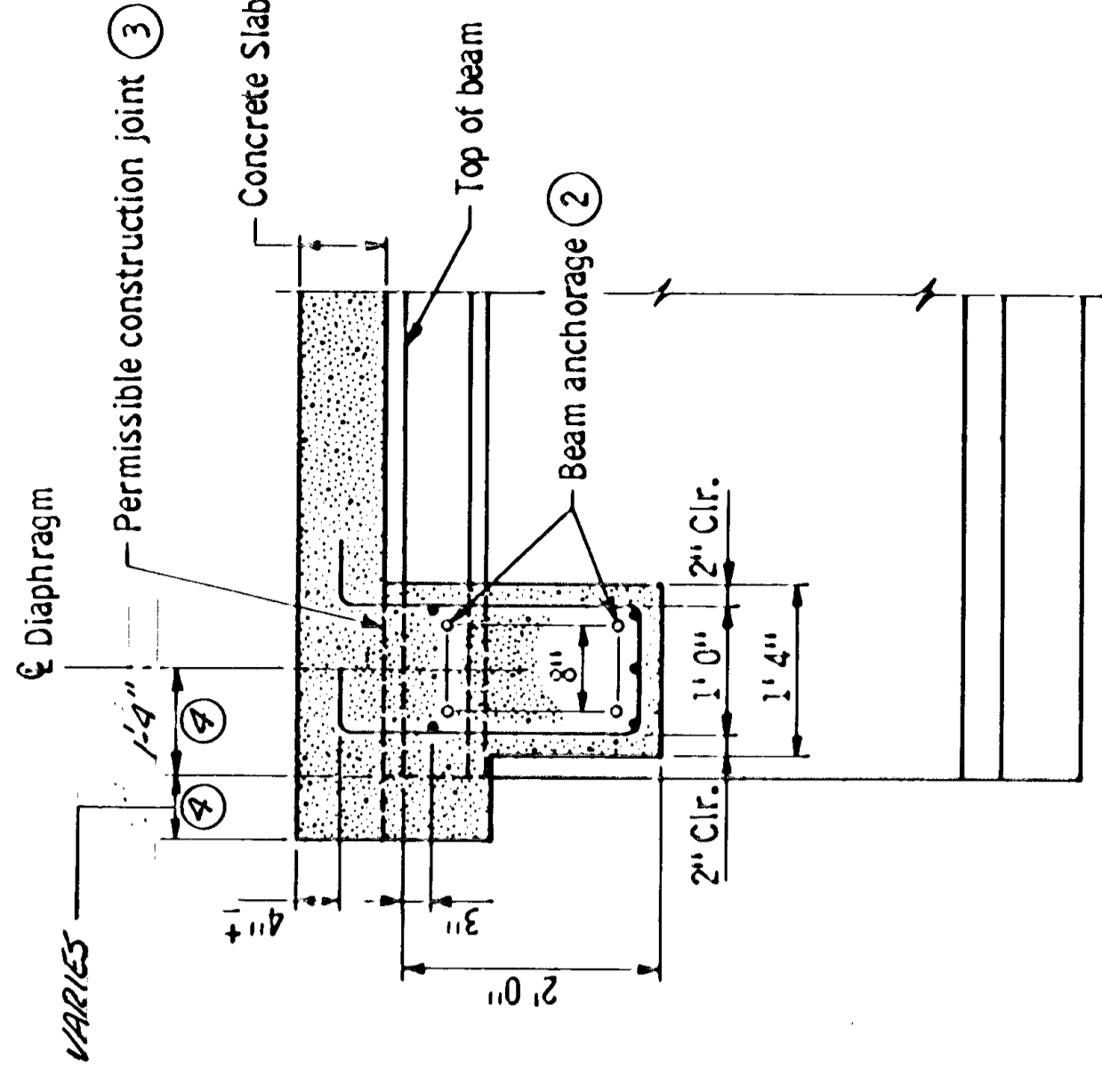
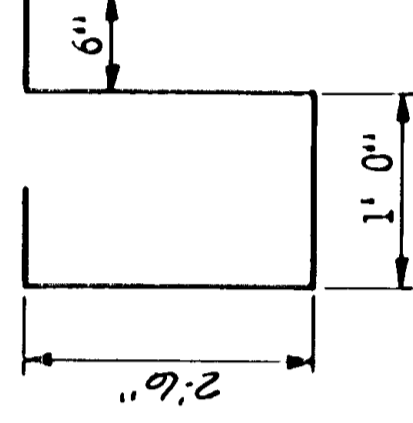
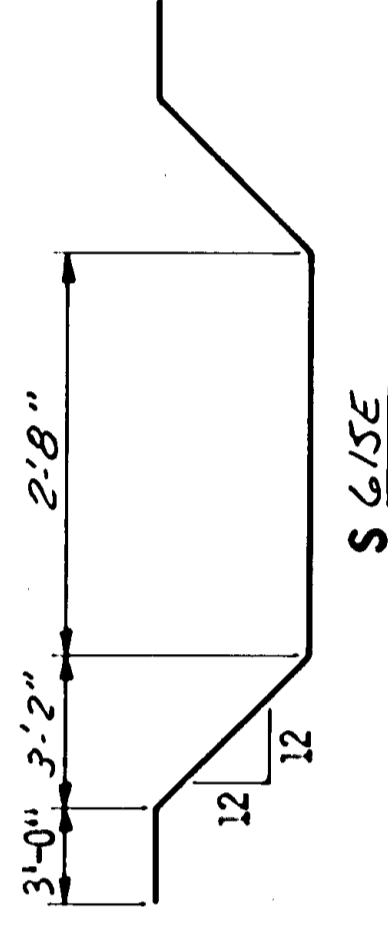


PART TRANSVERSE SECTION AT END DIAPHRAGM

LONGITUDINAL REINFORCEMENT IN BOTTOM OF DIAPHRAGM

BEAM SPACING TO ξ	BARS REQUIRED	
	STRAIGHT	BENT
Up to 8'	2	6
Over 8' to 11'	2	7
Over 11' to 13'	2	8
Over 13' to 15'	2	9
Over 15' to 18'	2	11



SECTION A-A

NOTE:

- ① Distance measured along ξ of diaphragm.
- ② BEAM ANCHORAGES
Fascia beams only: four 3/4" dia. threaded rods.
Interior beams: Two 3/4" dia. threaded rods on top
two No. 7 bars on bottom.
- ③ When a construction joint is used at this location, diaphragm falsework shall remain in place until the diaphragm concrete has obtained the required strength.
- ④ *ALONG ξ BEAMS.*
- ⑤ All diaphragm bars shown are listed with the superstructure reinforcement. Diaphragm concrete and reinforcement quantities are included in superstructure quantities (except threaded rods are included in payment for prestressed beams).

APPROVED: July 26, 1977
Developed by: ENGINEERING STANDARDS
AND BRIDGES AND STRUCTURES
Issued by: ENGINEERING STANDARDS

STATE OF MINNESOTA
DEPARTMENT OF TRANSPORTATION
CONCRETE END DIAPHRAGM
63" - 81" PRESTRESSED CONCRETE BEAMS
(PARAPET ABUTS.)

REVISIONS
AUG. 23, 1978
SEPT. 22, 1982

DETAIL NO.
B812