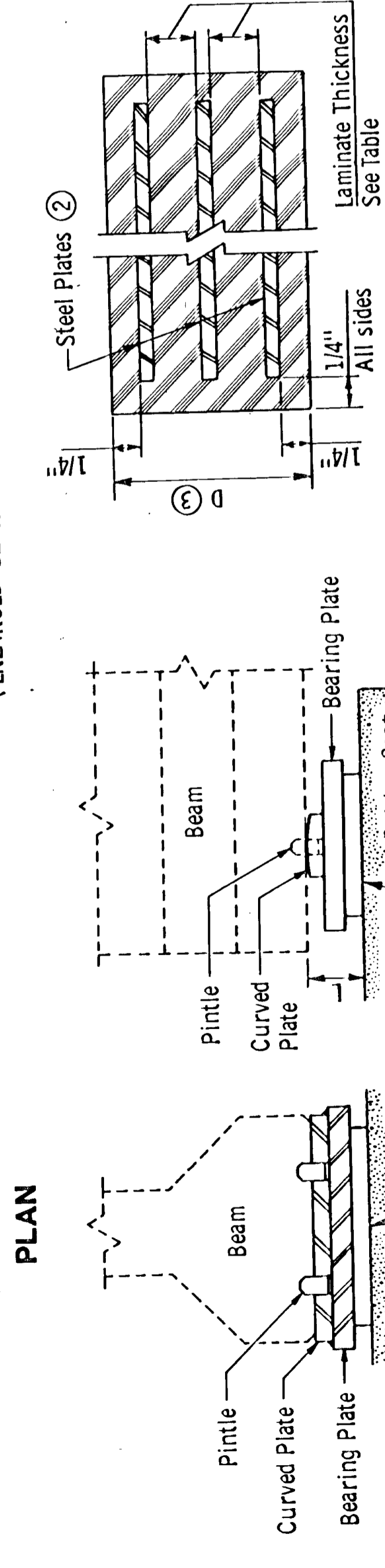


SECTION Y-Y
(ENLARGED BEARING ASSEMBLY)



SECTION X-X
(END ELEVATION)

SECTION THRU BEARING PAD

TABLE 4

Beam Size	Bearing Pad Size		Steel Plates		Laminates		Shape Factor	Bearing Plate Size			Curved Plate Size	Pintle Dia.	Pintle Spacing	Assty. Height	Assy. Type			
	A	B	No.	Thick.	No.	Thick.		C	E	F						G	H	J
81"	12"	24"	3-3/4"	6	1/8"	5	1/2"	8.0	14"	27"	1 1/4"	4 1/2"	26"	1 1/4"	1 1/2"	8"	6 1/4"	E1
81"	12"	24"	7 1/2"	12	1/8"	11	1/2"	8.0	14"	27"	1 1/4"	4 1/2"	26"	1 1/4"	1 1/2"	8"	10"	E2

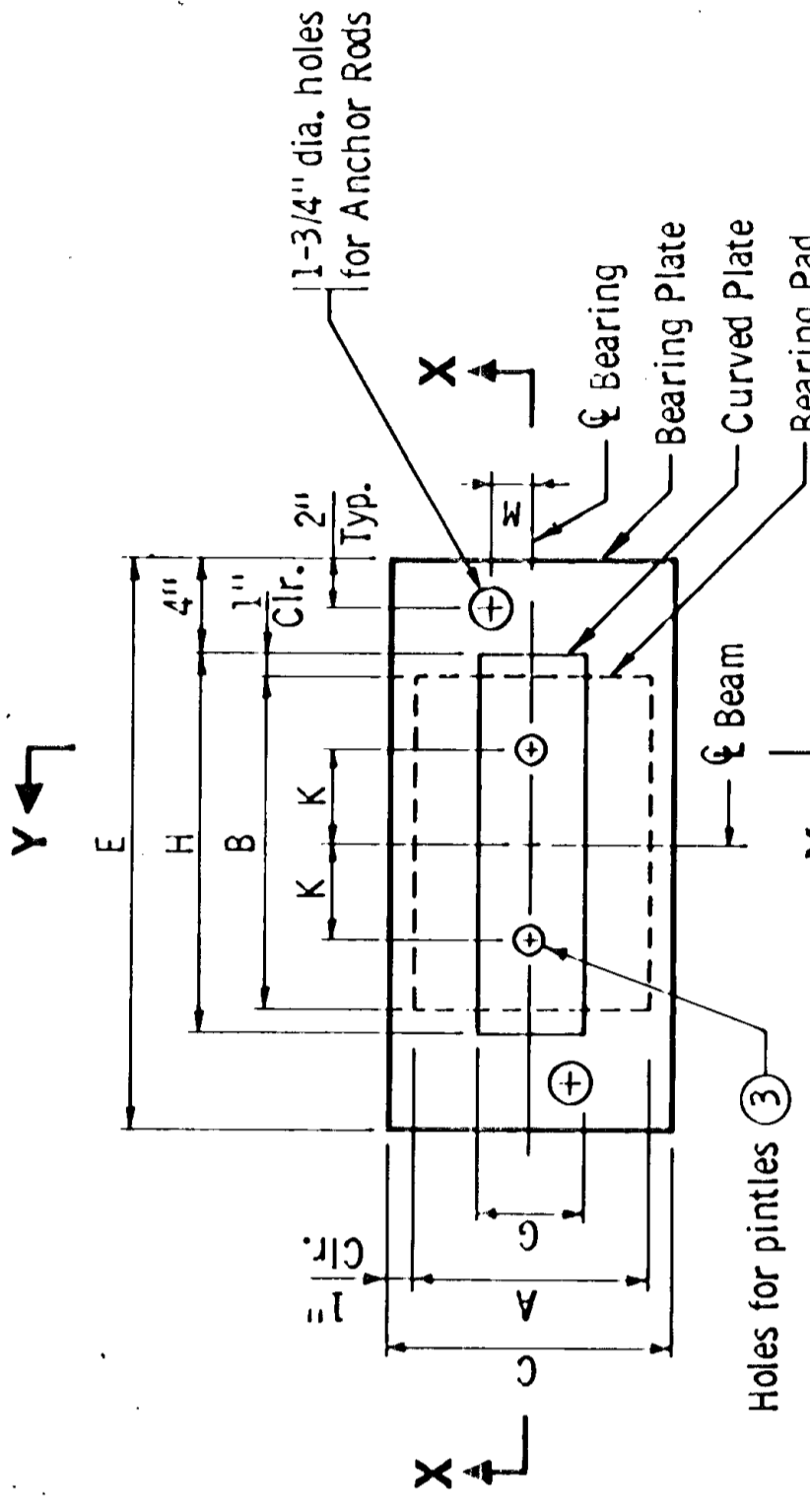
NOTES:
 For elastomeric materials & pad construction, see Spec. 3741 and special provisions, except as noted.
 All steel plates shall comply with Spec. 3306, except as noted.
 All plates shall be flat after fabrication and galvanizing. Welding distortion of bearing plates shall be straightened to within 1/16" of flatness by mechanical means without damage to the zinc coating.
 Pintles shall comply with Spec. 3314, Type II
 Galvanize structural steel bearing assembly after fabrication per Spec. 3394, except as noted.
 Payment for bearing assembly shall include all material on this detail.

APPROVED: **AUG 4, 1987**
 Developed by: ENGINEERING STANDARDS & BRIDGES AND STRUCTURES OFFICES
 Issued by: OFFICE OF ENGINEERING STANDARDS

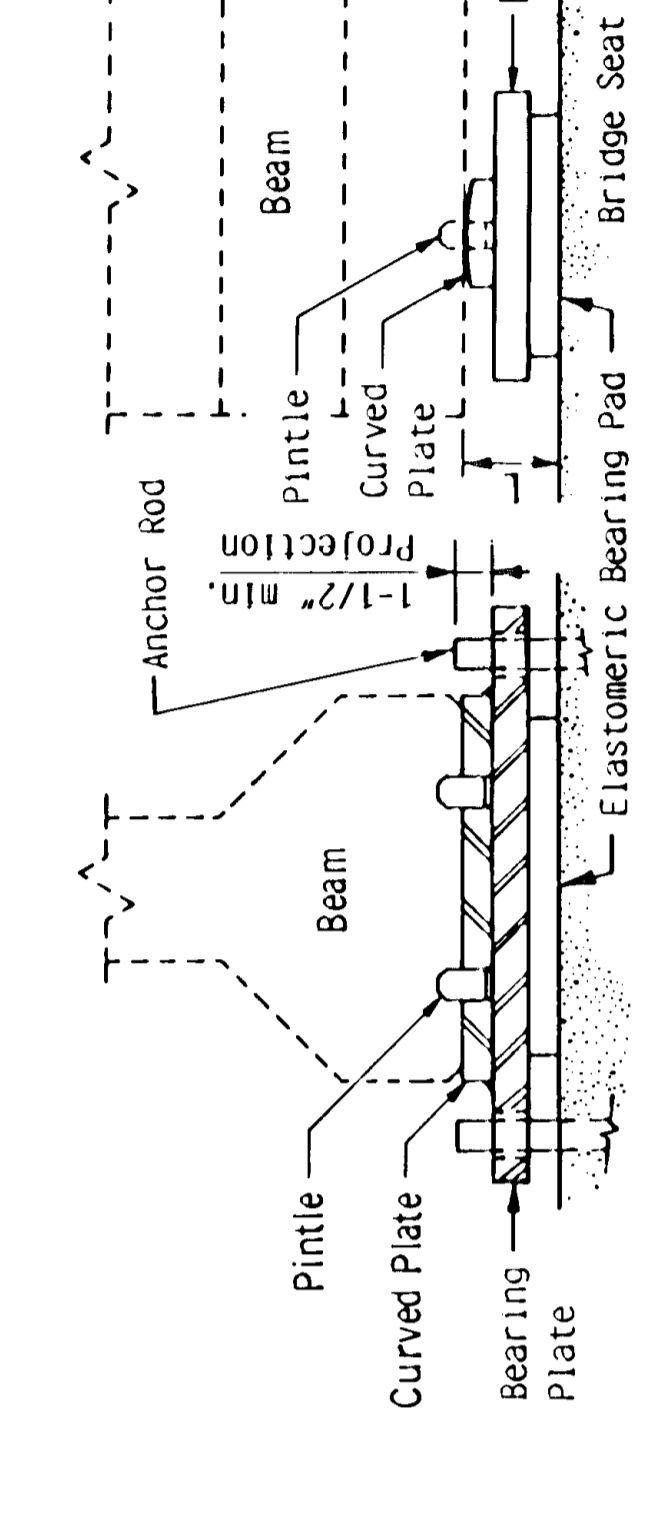
STATE OF MINNESOTA
 DEPARTMENT OF TRANSPORTATION
CURVED PLATE BEARING ASSEMBLY
PRESTRESSED CONCRETE BEAMS
(EXPANSION)

REVISION

DETAIL NO. **B311**



SECTION Y-Y
(ENLARGED BEARING ASSEMBLY)



SECTION X-X
(Anchor Rods Not Shown)

ANCHOR ROD DETAIL

TABLE 2

Beam Size	Bearing Pad Size		Steel Plates		Laminates		Shape Factor	Bearing Plate Size			Curved Plate Size	Pintle Dia.	Pintle Spacing	Anchor Rod Offset	Assty. Height	Assy. Type			
	A	B	No.	Thick.	No.	Thick.		C	E	F							G	H	J
81"	12"	24"	1 1/4"	2	1/8"	1	1/2"	8.0	14"	34"	1 1/4"	4 1/2"	26"	1 1/4"	1 1/2"	8"	0"	3-3/4"	F1

NOTES:
 For elastomeric materials & pad construction, see Spec. 3741 and special provisions, except as noted.
 All steel plates & anchor rods shall comply with Spec. 3306, except as noted.
 All plates shall be flat after fabrication and galvanizing. Welding distortion of bearing plates shall be straightened to within 1/16" of flatness by mechanical means without damage to the zinc coating.
 Pintles shall comply with Spec. 3314, Type II
 Galvanize anchor rods and structural steel bearing assembly after fabrication per Spec. 3394, except as noted.
 Payment for bearing assembly shall include all material on this detail.

APPROVED: **AUG 4, 1987**
 Developed by: ENGINEERING STANDARDS & BRIDGES AND STRUCTURES OFFICES
 Issued by: ENGINEERING STANDARDS

STATE OF MINNESOTA
 DEPARTMENT OF TRANSPORTATION
CURVED PLATE BEARING ASSEMBLY
PRESTRESSED CONCRETE BEAMS
(FIXED)

REVISION

DETAIL NO. **B310**